

---

**NATIONAL PARK SERVICE**

**STATISTICAL ABSTRACT**

**1996**

---

Public Use Statistics Program Center  
National Park Service  
Department of Interior

## CONTENTS

INTRODUCTION .....	i
Table 1: Types of Areas Administered by the NPS .....	1
Table 2: Recreation Visits by States in 1996 .....	2
Table 3: Recreation Visits by Field Areas in 1996 .....	3
Table 4: Recreation Visits by Population Centers in 1996 .....	3
Table 5: Recreation Visits and Hours by Park in 1996 .....	4
Table 6: Overnight Stays by Park in 1996 .....	18
Table 7: Buses by Park in 1996 .....	24
Table 8: Non Reporting and Affiliated Areas in 1996 .....	28
Table 9: Recreation Visits by State in 1996 .....	35
Table 10: Overnight Stays by State in 1996 .....	51
FOOTNOTES .....	59
DEFINITIONS .....	61
ABBREVIATIONS .....	64
ILLUSTRATIONS	
Figure 1: Types of Areas Administered in 1996 .....	29
Figure 2: Ten Most Visited Areas Account for 32% of all Visits in 1996 .....	30
Figure 3: Overnight Stays by Type of Accommodation in 1996 .....	31
Figure 4: Recreation Visits by Population Centers in 1996 .....	32
Figure 5: 1995 vs. 1996 Recreation Visits by Month .....	33
Figure 6: Percentage Change of Recreation Visits by State .....	34

## **INTRODUCTION**

National Park Service professionals are dedicated to their fundamental mission as protectors of our resources for future generations, archivists of the nation's history, and providers of educational and leisure time opportunities. Timely, reliable, and useful information is fundamental to effective management and planning.

The Public Use Statistics Program Center acknowledges the conscientious efforts of field staff of the many areas of the National Park Service. Without the effort of park staff to count, record, and report the public use summarized here, a statistical report of this quality would not be possible. A program of collecting and analyzing monthly public use is combined with continuous auditing of park counting procedures to ensure consistency and accuracy of data. The footnotes at the end of this report describe conditions at parks which may require important adjustments for certain applications of these data.

The gathering and publication of these statistics is in accordance with Public Law 88-29, "An Act to Promote the Coordination and Development of Effective Programs Relating to Outdoor Recreation" and related legislation. The definitions at the end of this report were initially outlined by "A Uniform Method for Measuring and Reporting Recreation Use on the Public Lands and Waters of the United States", unpublished guideline of the Recreation Advisory Council Study Committee Number Two, April 1965.

Comments or requests for additional public use information should be addressed to:

Public Use Statistics Program Center, WASO-TNT  
National Park Service  
12795 W. Alameda Parkway  
P. O. Box 25287  
Denver, Colorado  
80225-0287  
Telephone: (303) 987-6950  
Facsimile: (303) 969-6968

**Table 1: Types of Areas Administered by the NPS**

<b>AREAS ADMINISTERED BY TYPE<sup>1</sup></b>	<b>RECREATION VISITS</b>	<b>AREAS REPORTING VISITS</b>	<b>AREAS NOT REPORTING</b>	<b>AREAS ADMINISTERED</b>
International Historic Site	Not Reporting	0	1	1
National Battlefields	1,555,261	10	1	11
National Battlefield Parks	1,975,023	3	0	3
National Battlefield Site	Not Reporting	0	1	1
National Historic Sites	10,646,982	67	7	74
National Historical Parks	23,527,565	32	6	38
National Lakeshores	3,189,469	4	0	4
National Memorials	14,855,413	26	1	27
National Military Parks	5,402,325	9	0	9
National Monuments	23,569,303	69	4	73
National Parks	63,061,828	52	2	54
National Parkways	30,855,191	4	0	4
National Preserves	604,355	10	6	16
National Recreation Areas	52,604,610	18	1	19
National Reserves	67,785	1	1	2
National Rivers	4,285,991	4	2	6
National Scenic Trails <sup>2</sup>	Not Reporting	0	3	3
National Seashores	17,166,702	10	0	10
National Wild and Scenic Rivers	1,198,768	5	4	9
Parks - Other <sup>3</sup>	11,229,592	10	1	11
<b>TOTAL</b>	<b>265,796,163</b>	<b>334</b>	<b>41</b>	<b>375</b>

<sup>1</sup>Does not include 23 affiliated areas not reporting public use to the NPS. Does include Gloria Dei (Old Swedes') Church NHS as part of Independence NHS (not administered but reporting).

<sup>2</sup>Public use records of the Appalachian NST are kept by the Appalachian Trail Commission.

<sup>3</sup>Parks without national designation include National Capital Parks, Constitution Gardens, and White House.

**Table 2: Recreation Visits by States in 1996**

STATE	VISITS	PERCENT <sup>1</sup>	STATE	VISITS	PERCENT <sup>1</sup>
Alabama	1,039,796	-21%	Montana	3,863,091	-7%
Alaska	1,836,752	8%	Nebraska	185,117	-4%
Arizona	12,416,157	-4%	Nevada	7,099,770	-5%
Arkansas	2,468,449	-3%	New Hampshire	37,498	8%
California	34,569,619	-2%	New Jersey	5,135,151	-1%
Colorado	5,870,983	1%	New Mexico	2,180,832	-3%
Connecticut	11,127	6%	New York	15,345,015	4%
District of Columbia	15,827,775	2%	North Carolina	18,874,891	2%
Florida	6,633,555	-18%	North Dakota	475,516	4%
Georgia	7,037,556	8%	Ohio	3,736,291	9%
Guam	133,220	6%	Oklahoma	1,551,574	-8%
Hawaii	4,800,327	3%	Oregon	875,469	-5%
Idaho	560,405	-3%	Pennsylvania	8,998,698	-1%
Illinois	412,524	-4%	Puerto Rico	1,051,187	-22%
Indiana	1,792,103	-9%	Rhode Island	49,513	29%
Iowa	335,651	6%	South Carolina	864,390	4%
Kansas	94,391	-3%	South Dakota	3,855,501	4%
Kentucky	3,540,209	-1%	Tennessee	8,049,074	1%
Louisiana	849,136	-10%	Texas	6,001,583	3%
Maine	2,704,831	-5%	Utah	9,353,274	4%
Maryland	3,485,313	*	Virgin Islands	633,451	-11%
Massachusetts	9,718,497	*	Virginia	21,785,189	-5%
Michigan	1,518,134	-7%	Washington	6,880,358	-10%
Minnesota	625,817	1%	West Virginia	1,885,986	-3%
Mississippi	6,533,872	-3%	Wisconsin	379,941	-4%
Missouri	5,499,080	10%	Wyoming	6,332,524	-2%
			TOTAL	265,796,163	-1%

<sup>1</sup>Percent change from 1995

\* Less than +/-1%

**Table 3: Recreation Visits by Field Areas in 1996**

<b>FIELD AREAS</b>	<b>VISITS</b>	<b>PERCENT<sup>1</sup></b>
Alaska	1,836,752	8%
Intermountain	45,182,071	-1%
Midwest	21,378,515	2%
National Capital	26,630,268	-1%
Northeast	51,830,081	*
Pacific West	57,307,115	-4%
Southeast	61,631,361	-2%
<b>TOTALS</b>	<b>265,796,163</b>	<b>-1%</b>

**Table 4: Recreation Visits by Population Centers in 1996**

<b>CENTERS</b>	<b>VISITS</b>	<b>PERCENT<sup>1</sup></b>
Mixed	24,754,640	-3%
Outlying	48,948,915	-4%
Remote	2,985,473	13%
Rural	89,682,243	-4%
Suburban	24,704,012	1%
Urban	74,720,880	2%
<b>TOTALS</b>	<b>265,796,163</b>	<b>-1%</b>

<sup>1</sup>Percent change from 1995

\*Less than +/-1%

Table 5: Recreation Visits and Hours by Park in 1996

PARK	VISITS				HOURS			
	RECREATION	PERCENT <sup>1</sup> CHANGE	NON RECREATION	PERCENT <sup>1</sup> CHANGE	RECREATION	PERCENT <sup>1</sup> CHANGE	NON RECREATION	PERCENT <sup>1</sup> CHANGE
Abraham Lincoln Birthplace NHS	249,344	-7%			249,344	-7%		
Acadia NP <sup>4</sup>	2,704,831	-5%	252,576	0%	14,442,606	-5%	252,576	0%
Adams NHS	38,230	-19%	1,305	-7%	35,280	-20%	655	-7%
Agate Fossil Beds NM	16,567	-11%	9,000	0%	22,227	-11%	756	0%
Alibates Flint Quarries NM	3,276	18%			8,193	18%		
Allegheny Portage Railroad NHS	139,446	-4%	180	0%	152,560	-6%	48	0%
Amistad NRA <sup>6</sup>	1,238,990	-13%	1,128	0%	9,369,082	-13%	1,128	0%
Andersonville NHS <sup>7</sup>	197,394	26%			394,788	26%		
Andrew Johnson NHS	59,102	-6%			33,574	-5%		
Antietam NB <sup>7</sup>	246,082	14%			708,584	36%		
Apostle Islands NL	168,614	0%	1,054	0%	843,380	-3%	267	0%
Appomattox Court House NHP	205,938	-8%			170,574	-8%		
Arches NP <sup>4</sup>	856,016	0%			3,663,763	-1%		
Arkansas Post NMem	47,919	19%			71,900	19%		
Arlington House, The Robert E. Lee Mem	409,143	-27%			204,580	-27%		
Assateague Island NS	1,910,450	-1%	3,600	0%	16,401,923	-1%	3,600	0%
Aztec Ruins NM	65,955	-9%	1,248	0%	98,934	-9%	2,191	24%
Badlands NP	1,024,705	-5%	18,864	0%	4,572,411	-6%	9,432	0%
Bandelier NM <sup>7</sup>	363,447	-8%	840	0%	1,362,133	-18%	132	0%
Bent's Old Fort NHS	37,640	-2%			47,051	-2%		
Big Bend NP	279,454	-5%	2,364	0%	8,384,112	-9%	7,092	0%
Big Cypress NPres	424,920	16%			1,678,039	24%		
Big Hole NB	50,235	-22%			121,899	24%		
Big South Fork NR & RA <sup>4</sup>	855,882	-4%			5,914,148	-1%		
Big Thicket NPres <sup>6</sup>	111,626	-3%			476,747	-7%		

<sup>1</sup>Percent change from 1995

Table 5: Recreation Visits and Hours by Park in 1996 (continued)

PARK	VISITS				HOURS			
	RECREATION	PERCENT <sup>1</sup> CHANGE	NON RECREATION	PERCENT <sup>1</sup> CHANGE	RECREATION	PERCENT <sup>1</sup> CHANGE	NON RECREATION	PERCENT <sup>1</sup> CHANGE
Bighorn Canyon NRA	301,533	-20%	30,825	0%	1,207,291	-21%	30,825	0%
Biscayne NP <sup>7</sup>	338,603	-42%			1,015,809	-42%		
Black Canyon of the Gunnison NM <sup>7</sup>	200,125	-9%			1,031,067	-5%		
Blue Ridge Parkway	17,169,062	-1%	1,942,260	0%	108,055,188	-1%	971,136	0%
Bluestone NSR	64,651	2%			161,629	2%		
Booker T. Washington NM	20,134	-22%	84	0%	30,228	-18%	12	0%
Boston African American NHS	345,739	-3%			120,271	-3%		
Boston NHP <sup>4, 7</sup>	2,260,565	23%	64,620	36%	2,259,052	53%	10,987	36%
Bryce Canyon NP <sup>4</sup>	1,269,600	28%	473,608	0%	9,674,502	14%	142,083	-1%
Buck Island Reef NM	45,618	-21%			238,050	-21%		
Buffalo National River	716,530	2%			5,532,711	-6%		
Cabrillo NM	1,047,672	-1%	81,794	0%	1,514,352	-1%	20,448	0%
Canaveral NS	1,496,961	8%			3,810,926	9%		
Canyon de Chelly NM <sup>4</sup>	818,667	7%	1,170,366	9%	6,125,034	6%	2,340,732	39%
Canyonlands NP	447,527	0%			4,387,230	-3%		
Cape Cod NS	4,901,782	-5%	29,548	0%	9,858,767	-6%	177,288	0%
Cape Hatteras NS	2,355,580	-1%	126,069	-1%	10,895,904	-2%	421,227	-9%
Cape Krusenstern NM	3,401	0%	9,710	0%	24,596	0%	67,924	0%
Cape Lookout NS <sup>4, 8</sup>	379,370	9%	4,800	0%	1,935,778	3%	14,400	0%
Capitol Reef NP	678,012	4%	56,071	-2%	1,207,235	1%	56,071	-2%
Capulin Volcano NM	64,680	-1%	593	132%	91,050	-3%	593	132%
Carl Sandburg Home NHS <sup>7</sup>	42,879	-12%			56,701	-9%		
Carlsbad Caverns NP	557,217	-5%			2,210,473	-5%		
Casa Grande Ruins NM	155,941	-5%	2,160	0%	132,551	-5%	216	0%
Castillo de San Marcos NM	668,200	4%			501,151	4%		

<sup>1</sup>Percent change from 1995



Table 5: Recreation Visits and Hours by Park in 1996 (continued)

PARK	VISITS				HOURS			
	RECREATION	PERCENT <sup>1</sup> CHANGE	NON RECREATION	PERCENT <sup>1</sup> CHANGE	RECREATION	PERCENT <sup>1</sup> CHANGE	NON RECREATION	PERCENT <sup>1</sup> CHANGE
Castle Clinton NM	3,753,944	2%	21,672	200%	1,899,408	3%	42,095	202%
Catoctin Mountain Park <sup>7</sup>	484,892	-12%	250,840	13%	2,097,467	-7%	27,372	9%
Cedar Breaks NM	543,760	1%	52,697	30%	1,155,740	2%	105,394	30%
Chaco Culture NHP	76,868	3%	5,563	5%	926,521	-9%	5,563	5%
Chamizal NMem	186,130	-16%	11,033	-6%	278,005	-15%	38,619	-6%
Channel Islands NP <sup>4</sup>	490,715	-7%	32,623	-9%	5,650,181	-16%	782,952	-9%
Charles Pinckney NHS	24,340	120%			48,680	120%		
Chattahoochee River NRA	3,540,375	2%			14,161,500	2%		
Chesapeake and Ohio Canal NHP <sup>7</sup>	904,509	-44%	11,880	0%	6,280,560	-26%	11,880	0%
Chickamauga & Chattanooga NMP	974,898	-6%	8,494,757	1%	1,844,011	-3%	1,274,214	1%
Chickasaw NRA <sup>6</sup>	1,551,574	-8%	1,588,030	9%	5,627,021	-12%	127,043	9%
Chiricahua NM	92,842	-1%	3,244	35%	444,909	-4%	1,080	35%
Christiansted NHS	111,891	-5%			59,140	-6%		
City of Rocks NRes <sup>6</sup>	67,785	-13%			237,250	-13%		
Clara Barton NHS	11,341	-15%			11,341	-15%		
Colonial NHP <sup>7</sup>	3,145,039	-5%	1,613,308	-7%	3,494,374	-6%	806,656	-7%
Colorado NM	318,717	28%	228,291	-3%	974,725	16%	114,149	-3%
Congaree Swamp NM	62,614	-8%			202,182	-8%		
Coronado NMem	93,656	2%	2,508	0%	126,298	5%	1,260	0%
Coulee Dam NRA <sup>7</sup>	1,045,455	-22%	18,000	0%	4,635,915	-18%	9,000	0%
Cowpens NB	189,434	20%			117,683	5%		
Crater Lake NP <sup>4,7</sup>	476,957	-4%	49,600	7%	2,254,210	-13%	24,800	6%
Craters of the Moon NM <sup>6</sup>	217,586	-8%			660,590	-9%		
Cumberland Gap NHP <sup>6,6</sup>	1,051,683	3%	156,463	-24%	2,401,386	5%	78,234	-24%
Cumberland Island NS <sup>7</sup>	43,182	8%			832,074	7%		

<sup>1</sup>Percent change from 1995

Table 5: Recreation Visits and Hours by Park in 1996 (continued)

PARK	V I S I T S				H O U R S			
	RECREATION	PERCENT <sup>1</sup> CHANGE	NON RECREATION	PERCENT <sup>1</sup> CHANGE	RECREATION	PERCENT <sup>1</sup> CHANGE	NON RECREATION	PERCENT <sup>1</sup> CHANGE
Curecanti NRA	1,017,256	2%			4,678,764	2%		
Cuyahoga Valley NRA <sup>4</sup>	3,455,878	8%	9,696	9%	10,472,610	7%	4,848	9%
Dayton Aviation NHP <sup>2</sup>	39,262	0%			78,524	0%		
De Soto NMem	206,131	-3%			340,116	-3%		
Death Valley NP	1,189,215	7%	45,195	7%	8,687,656	0%	67,795	7%
Delaware Water Gap NRA <sup>4,7</sup>	4,657,735	-1%	155,088	-58%	20,929,500	0%	77,547	-58%
Denali NP & Pres <sup>4</sup>	341,385	-37%	813,258	5%	5,498,174	-14%	203,318	5%
Devils Postpile NM	123,364	17%			530,118	17%		
Devils Tower NM <sup>7</sup>	436,591	4%	2,119	-11%	1,308,895	-17%	1,061	-11%
Dinosaur NM	464,133	-7%	732	0%	2,557,483	-3%	732	0%
Dry Tortugas NP	35,127	7%	11,440	-16%	440,043	15%	137,280	-16%
Edgar Allan Poe NHS	15,549	16%			15,549	16%		
Edison NHS	53,603	-4%			68,073	-10%		
Effigy Mounds NM <sup>4</sup>	93,894	25%	1,300	-4%	234,738	32%	221	-4%
Eisenhower NHS	84,465	-12%			139,265	-21%		
El Malpais NM <sup>6</sup>	101,158	1%	720	0%	427,726	3%	180	0%
El Morro NM	82,655	-1%	16,621	-1%	200,612	-15%	5,485	-1%
Eleanor Roosevelt NHS	93,998	11%			141,001	11%		
Eugene O'Neill NHS	3,440	11%	63	-27%	12,073	40%	126	950%
Everglades NP <sup>4,6,7</sup>	890,167	8%	94,658	6%	5,545,100	20%	425,964	6%
Federal Hall NMem <sup>7</sup>	259,932	31%	4,459	106%	144,033	28%	8,854	211%
Fire Island NS	385,706	11%	61,086	-30%	1,929,438	-14%	183,258	-30%
Florissant Fossil Beds NM	91,278	0%			112,502	-1%		
Ford's Theatre NHS	995,416	-3%	420	0%	1,022,202	-4%	840	0%
Fort Bowie NHS	10,666	1%			21,332	1%		

<sup>1</sup>Percent change from 1995

Table 5: Recreation Visits and Hours by Park in 1996 (continued)

PARK	VISITS				HOURS			
	RECREATION	PERCENT <sup>1</sup> CHANGE	NON RECREATION	PERCENT <sup>1</sup> CHANGE	RECREATION	PERCENT <sup>1</sup> CHANGE	NON RECREATION	PERCENT <sup>1</sup> CHANGE
Fort Caroline NMem	122,565	-1%			122,565	-1%		
Fort Clatsop NMem	179,573	-8%	1,529	6%	215,311	-8%	384	6%
Fort Davis NHS	64,560	6%	284	-3%	116,508	6%	315	-5%
Fort Donelson NB	217,178	0%	556,424	-9%	149,560	3%	18,364	-9%
Fort Frederica NM	308,819	3%	1,800	0%	311,674	3%	444	0%
Fort Laramie NHS	54,402	-8%	365	0%	81,606	-8%	551	0%
Fort Larned NHS	45,985	-5%			91,970	-5%		
Fort Matanzas NM	455,402	1%			467,747	1%		
Fort McHenry NM & HS	610,932	1%	720	0%	916,400	1%	360	0%
Fort Necessity NB	96,103	-11%	120	0%	114,190	-7%	48	0%
Fort Point NHS	1,483,089	6%			865,761	6%		
Fort Pulaski NM	343,706	10%	28,800	0%	863,696	9%	7,200	0%
Fort Raleigh NHS	308,348	7%	1,344	0%	513,794	7%	1,344	0%
Fort Scott NHS	48,406	-2%	995	-28%	72,616	-2%	327	-29%
Fort Smith NHS <sup>6,7</sup>	75,056	-22%			99,824	-22%		
Fort Stanwix NM	48,429	-14%			72,647	-14%		
Fort Sumter NM	322,702	-2%			372,582	-3%		
Fort Union NM	19,374	0%	435	-12%	22,861	0%	34	-8%
Fort Union Trading Post NHS	23,448	15%	443	43%	29,418	31%	112	40%
Fort Vancouver NHS	352,769	14%			449,357	20%		
Fort Washington Park	247,954	1%			972,742	1%		
Fossil Butte NM	22,394	-15%	323	-31%	28,537	-34%	82	-29%
Frederick Douglass NHS	82,326	55%			45,041	-15%		
Frederick Law Olmsted NHS	4,660	-9%	329	44%	9,320	-9%	544	-13%
Fredericksburg & Spotsylvania CNTY BM NMP	477,991	3%	1,280,526	-23%	626,607	4%	170,452	6%

<sup>1</sup>Percent change from 1995

Table 5: Recreation Visits and Hours by Park in 1996 (continued)

PARK	VISITS				HOURS			
	RECREATION	PERCENT <sup>1</sup> CHANGE	NON RECREATION	PERCENT <sup>1</sup> CHANGE	RECREATION	PERCENT <sup>1</sup> CHANGE	NON RECREATION	PERCENT <sup>1</sup> CHANGE
Friendship Hill NHS	19,228	11%			35,420	23%		
Gates of the Arctic NP & Pres <sup>4</sup>	6,448	-9%	268	-67%	93,404	-57%	8,019	-53%
Gateway NRA <sup>4</sup>	6,381,502	5%	88,717	3%	12,795,332	-40%	22,181	3%
Gauley River NRA	214,880	7%			896,675	5%		
General Grant NMem	98,127	-15%	1,144	-51%	125,318	-33%	1,368	-66%
George Rogers Clark NHP	135,132	3%			181,078	3%		
George Washington Birthplace NM <sup>7</sup>	79,261	-49%	3,650	0%	158,522	-49%	3,650	0%
George Washington Carver NM	35,042	-5%			45,556	-5%		
George Washington Memorial Pkwy <sup>4,7</sup>	6,126,490	-6%	29,340,206	-8%	10,304,906	-6%	14,670,106	-8%
Gettysburg NMP	1,632,720	-1%	74,400	0%	5,037,022	-3%	12,348	0%
Gila Cliff Dwellings NM	56,933	-9%			56,933	-9%		
Glacier Bay NP & Pres <sup>8</sup>	304,374	21%	2,067	9%	4,302,186	20%	461,668	-12%
Glacier NP	1,720,805	-6%	14,754	45%	14,375,165	-7%	124,321	38%
Glen Canyon NRA	2,505,004	0%	27,083	-1%	51,810,512	2%	324,996	-1%
Golden Gate NRA <sup>4</sup>	14,043,984	-4%	0	-100%	21,567,696	-48%	0	-100%
Golden Spike NHS <sup>7</sup>	60,484	20%	33,483	13%	147,706	8%	16,744	13%
Grand Canyon NP <sup>8,7</sup>	4,537,703	0%	339,507	-3%	69,007,742	-1%	339,507	-3%
Grand Portage NM	71,746	-5%			46,261	-9%		
Grand Teton NP	2,733,439	0%	1296643	15%	19,753,525	-1%	1,296,643	15%
Grant-Kohrs Ranch NHS	29,175	-1%			35,887	-1%		
Great Basin NP <sup>4</sup>	86,635	-1%	747	-64%	1,116,629	24%	376	-64%
Great Sand Dunes NM <sup>8</sup>	309,283	-4%	470	0%	1,747,813	-6%	470	0%
Great Smoky Mountains NP <sup>8</sup>	9,265,667	2%	10,877,968	-6%	70,320,611	0%	5,438,987	-6%
Greenbelt Park	322,800	-3%			996,231	-5%		
Guadalupe Mountains NP	223,485	7%			562,992	-13%		

<sup>1</sup>Percent change from 1995

Table 5: Recreation Visits and Hours by Park in 1996 (continued)

PARK	V I S I T S				H O U R S			
	RECREATION	PERCENT <sup>1</sup> CHANGE	NON RECREATION	PERCENT <sup>1</sup> CHANGE	RECREATION	PERCENT <sup>1</sup> CHANGE	NON RECREATION	PERCENT <sup>1</sup> CHANGE
Guilford Courthouse NMP <sup>4, 5</sup>	614,766	167%	3,518,319	2%	327,815	137%	29,204	2%
Gulf Islands NS <sup>6</sup>	2,581,037	-43%	124,212	0%	8,582,175	-37%	136,032	-4%
Hagerman Fossil Beds NM	11,793	-8%			17,693	-8%		
Haleakala NP	1,553,344	-3%	29,088	0%	3,855,536	-1%	21,648	0%
Hamilton Grange NMem <sup>6</sup>	0	0%			0	0%		
Hampton NHS	30,218	-2%	600	0%	34,745	-3%	600	0%
Harpers Ferry NHP <sup>7</sup>	314,548	-19%			1,258,192	-18%		
Harry S Truman NHS	65,463	-2%			51,566	-8%		
Hawaii Volcanoes NP <sup>6</sup>	1,231,557	5%	1,319,736	1%	8,194,893	4%	435,511	1%
Herbert Hoover NHS	241,757	-1%	18,000	0%	241,757	0%	1,200	0%
Home of Franklin D. Roosevelt NHS	193,170	14%			354,446	18%		
Homestead National Monument of America <sup>4</sup>	36,384	12%			61,699	9%		
Hopewell Culture NHP	37,005	-5%			44,101	5%		
Hopewell Furnace NHS	91,412	4%	600	0%	109,695	4%	300	0%
Horseshoe Bend NMP	95,851	-10%	711,031	-18%	232,164	-9%	236,988	-36%
Hot Springs NP	1,538,105	-5%	2,015,452	0%	1,034,237	-14%	403,092	0%
Hovenweep NM <sup>6</sup>	27,526	2%	416	-13%	37,834	-65%	81	-15%
Hubbell Trading Post NHS	253,123	6%	4,584	0%	130,781	6%	1,056	0%
Independence NHP <sup>5</sup>	3,128,028	2%			4,705,568	2%		
Indiana Dunes NL <sup>7</sup>	1,526,166	-10%	118,260	-19%	3,805,775	-10%	59,130	-19%
Isle Royale NP <sup>4</sup>	23,445	0%	135	30%	1,681,527	6%	15,500	-35%
Jean Lafitte NHP & Pres	849,136	-10%	405,630	-11%	1,495,084	-11%	99,550	-11%
Jefferson National Expansion Memorial <sup>7</sup>	3,649,308	13%	458,751	45%	14,597,232	13%	77,987	45%
Jewel Cave NM	144,634	-6%	349	105%	164,048	-8%	349	105%
Jimmy Carter NHS <sup>7</sup>	39,766	23%			19,887	23%		

<sup>1</sup>Percent change from 1995

Table 5: Recreation Visits and Hours by Park in 1996 (continued)

PARK	VISITS				HOURS			
	RECREATION	PERCENT <sup>1</sup> CHANGE	NON RECREATION	PERCENT <sup>1</sup> CHANGE	RECREATION	PERCENT <sup>1</sup> CHANGE	NON RECREATION	PERCENT <sup>1</sup> CHANGE
John D. Rockefeller, Jr., Mem Pkwy	1,471,029	-3%	10,800	0%	2,845,987	3%	2,700	0%
John Day Fossil Beds NM	120,556	-6%	840	0%	146,625	-5%	84	0%
John Fitzgerald Kennedy NHS	15,717	70%			7,861	70%		
John Muir NHS	28,045	0%	1,451	7%	49,253	6%	363	7%
Johnstown Flood NMem	141,116	6%	61,069	6%	149,538	5%	1,832	6%
Joshua Tree NP	1,095,046	-11%	3,743	-13%	8,648,707	-3%	3,743	-13%
Kalaupapa NHP <sup>2</sup>	62,314	0%			498,512	0%		
Kaloko-Honokohau NHP	48,836	-2%			169,591	0%		
Kenai Fjords NP <sup>4</sup>	274,034	19%	930	-12%	742,758	91%	2,712	-16%
Kennesaw Mountain NBP <sup>7</sup>	1,172,130	2%	10,258,049	0%	2,014,381	3%	1,641,287	0%
Kings Canyon NP <sup>7</sup>	502,749	-40%	10,272	95%	15,543,818	-46%	41,088	95%
Kings Mountain NMP	227,709	-1%	221,618	0%	213,097	-2%	36,923	0%
Klondike Gold Rush NHP <sup>3</sup>	592,459	7%			2,070,751	10%		
Knife River Indian Villages NHS	15,987	-7%	361	-20%	26,195	-10%	183	-20%
Kobuk Valley NP	2,781	0%	5,678	0%	20,768	0%	46,592	0%
Korean War Veterans Mem <sup>2</sup>	863,639	0%			431,823	0%		
Lake Chelan NRA	36,891	-18%			470,503	-15%		
Lake Clark NP & Pres	12,727	0%			80,525	8%		
Lake Mead NRA	9,350,847	-5%	339,150	-5%	76,087,560	-9%	2,034,900	-5%
Lake Meredith NRA	1,676,466	14%			6,823,628	13%		
Lassen Volcanic NP	351,632	0%			4,073,124	3%		
Lava Beds NM <sup>7</sup>	108,298	-11%	771	0%	315,353	-23%	390	0%
Lincoln Boyhood NMem	130,805	-3%	16,200	0%	147,155	-3%	2,700	0%
Lincoln Home NHS	412,524	-4%	11,533	-12%	370,472	-5%	84,027	-6%
Lincoln Memorial <sup>6</sup>	1,190,961	-8%			595,484	-8%		

<sup>1</sup>Percent change from 1995

Table 5: Recreation Visits and Hours by Park in 1996 (continued)

PARK	VISITS				HOURS			
	RECREATION	PERCENT <sup>1</sup> CHANGE	NON RECREATION	PERCENT <sup>1</sup> CHANGE	RECREATION	PERCENT <sup>1</sup> CHANGE	NON RECREATION	PERCENT <sup>1</sup> CHANGE
Little Bighorn Battlefield NM	363,841	-11%	3,273	-11%	364,014	-11%	1,639	-11%
Longfellow NHS	13,131	-19%			19,698	-19%		
Lowell NHP	541,515	9%	6,481	-6%	696,254	6%	9,723	-6%
Lyndon B Johnson Mem Grove on the Potomac	489,122	-22%			244,565	-22%		
Lyndon B. Johnson NHP <sup>6</sup>	136,892	-14%	11,160	0%	399,536	-12%	44,640	0%
Maggie L. Walker NHS	8,536	-9%	192	205%	4,272	-9%	99	175%
Mammoth Cave NP	1,896,829	-2%	92,253	0%	4,939,466	-3%	86,544	0%
Manassas NBP	725,086	7%	480	0%	543,817	7%	84	0%
Martin Luther King, Jr., NHS <sup>7</sup>	774,917	82%			1,162,378	73%		
Martin Van Buren NHS	17,807	-8%	528	0%	19,119	-10%	132	0%
Mesa Verde NP <sup>7</sup>	617,360	-7%	16,268	-5%	5,145,861	-10%	16,268	-5%
Minute Man NHP	955,938	-11%			477,974	-11%		
Monocacy NB	11,312	-47%			2,830	-46%		
Montezuma Castle NM	1,029,336	11%	455	8%	1,029,336	11%	117	8%
Moore's Creek NB <sup>7</sup>	58,516	1%			37,258	-7%		
Morristown NHP	498,256	-15%			1,396,371	-16%		
Mount Rainier NP <sup>4,6</sup>	1,338,961	-7%	529,564	-29%	17,074,805	-5%	529,564	-29%
Mount Rushmore NMem <sup>4</sup>	1,904,991	13%	666,218	-29%	2,508,227	13%	222,072	-29%
Muir Woods NM	1,410,655	9%	5,475	0%	1,880,404	9%	7,281	0%
Natchez NHP	49,110	17%			80,800	49%		
Natchez Trace Parkway	6,088,610	4%	6,931,408	-6%	24,572,339	4%	6,931,408	-6%
National Capital Parks <sup>3,4,7</sup>	6,094,875	11%	20,780,757	0%	7,001,688	11%	13,526,228	0%
Natural Bridges NM	136,368	-7%	800	0%	754,504	-6%	400	0%
Navajo NM	100,323	-8%	28,936	-31%	325,351	-15%	7,235	-31%
New River Gorge NR	1,237,637	5%	2,400	0%	2,758,916	7%	4,800	0%

<sup>1</sup>Percent change from 1995

Table 5: Recreation Visits and Hours by Park in 1996 (continued)

PARK	V I S I T S				H O U R S			
	RECREATION	PERCENT <sup>1</sup> CHANGE	NON RECREATION	PERCENT <sup>1</sup> CHANGE	RECREATION	PERCENT <sup>1</sup> CHANGE	NON RECREATION	PERCENT <sup>1</sup> CHANGE
Nez Perce NHP	263,241	5%	1,800	0%	337,987	-1%	180	0%
Ninety Six NHS	37,591	19%			46,990	19%		
Noatak NPres	7,103	0%	6,214	0%	117,464	0%	49,712	0%
North Cascades NP	27,910	-58%			393,925	-35%		
Obed Wild and Scenic River	216,699	-7%	10,800	0%	1,011,339	-7%	900	0%
Ocmulgee NM <sup>7</sup>	129,818	13%			194,730	13%		
Olympic NP	3,348,723	-8%	984,064	-4%	19,576,234	-5%	357,667	-3%
Oregon Caves NM	98,383	-5%	520	0%	384,093	-4%	1,040	0%
Organ Pipe Cactus NM <sup>4</sup>	399,721	-3%	2,376	0%	1,205,154	-4%	3,564	0%
Ozark National Scenic Riverways	1,475,942	-3%			4,235,761	-3%		
Padre Island NS	840,236	11%	1,800	0%	5,737,876	8%	14,400	0%
Pea Ridge NMP	90,839	-15%			181,678	119%		
Pecos NHP	40,400	-2%			49,521	-3%		
Pennsylvania Avenue NHS	212,260	0%			70,047	0%		
Perry's Victory and International Peace Mem <sup>4</sup>	197,506	5%			213,006	17%		
Petersburg NB	171,312	-15%	261,969	17%	169,202	-16%	65,495	17%
Petrified Forest NP <sup>6</sup>	829,495	-11%	120	0%	1,793,287	-12%	10,296	219%
Petroglyph NM	90,533	3%			103,649	16%		
Pictured Rocks NL	403,684	-13%	1,850	0%	2,089,540	-12%	556	0%
Pinnacles NM	164,465	-7%			594,836	-7%		
Pipe Spring NM <sup>4</sup>	44,817	-3%	1,800	1400%	47,059	-3%	1,800	1400%
Pipestone NM	96,157	-8%			240,397	-7%		
Piscataway Park	194,494	32%			370,873	37%		
Point Reyes NS	2,272,398	3%	25,788	0%	10,231,020	5%	25,788	0%
Prince William Forest Park	239,369	0%	480	0%	2,140,024	-10%	960	0%

<sup>1</sup> Percent change from 1995



Table 5: Recreation Visits and Hours by Park in 1996 (continued)

PARK	V I S I T S				H O U R S			
	RECREATION	PERCENT <sup>1</sup> CHANGE	NON RECREATION	PERCENT <sup>1</sup> CHANGE	RECREATION	PERCENT <sup>1</sup> CHANGE	NON RECREATION	PERCENT <sup>1</sup> CHANGE
Pu'uhonua o Honaunau NHP <sup>4</sup>	441,828	1%			441,828	1%		
Puukohola Heiau NHS	46,593	2%	142,250	38%	23,298	2%	23,699	38%
Rainbow Bridge NM	325,562	-6%			488,346	-6%		
Redwood NP <sup>7</sup>	426,938	-23%			3,460,888	-36%		
Richmond NBP	77,807	-9%	147,433	7%	195,405	-1%	36,859	7%
Rio Grande Wild and Scenic River	498	1%			88,692	3%		
Rock Creek Park	1,873,822	-9%	12,421,270	0%	2,485,376	-12%	6,210,639	0%
Rocky Mountain NP <sup>4</sup>	2,923,755	2%	192,030	47%	21,254,178	3%	40,911	154%
Roger Williams NMem	49,513	29%	69,579	29%	42,895	30%	5,568	29%
Ross Lake NRA	313,565	-9%	720	0%	1,909,349	-7%	720	0%
Russell Cave NM	26,881	-25%			49,782	-20%		
Sagamore Hill NHS	71,195	0%			177,991	0%		
Saguaro NP <sup>4</sup>	671,643	-8%	2,103,595	-5%	974,378	-7%	525,899	-5%
Saint Croix National Scenic Riverway	422,653	-8%			2,770,928	-7%		
Saint Paul's Church NHS	4,346	-3%	588	106%	5,606	-4%	1,088	195%
Saint-Gaudens NHS	37,498	8%			73,282	8%		
Salem Maritime NHS	600,778	-13%	9	50%	290,933	-32%	6	50%
Salinas Pueblo Missions NM	44,913	-17%			92,977	-15%		
San Antonio Missions NHP <sup>8</sup>	1,239,970	14%			1,595,682	2%		
San Francisco Maritime NHP	3,670,972	1%			4,189,236	2%		
San Juan Island NHP	227,104	10%			208,881	13%		
San Juan NHS <sup>7</sup>	1,051,187	-22%			1,999,876	-23%		
Santa Monica Mountains NRA	428,524	10%	44,880	0%	744,690	5%	359,040	0%
Saratoga NHP	137,366	-23%	200,872	1%	366,065	-19%	16,070	1%
Saugus Iron Works NHS	21,451	3%	45,625	0%	32,181	3%	4,566	0%

<sup>1</sup>Percent change from 1995

Table 5: Recreation Visits and Hours by Park in 1996 (continued)

PARK	VISITS				HOURS			
	RECREATION	PERCENT <sup>1</sup> CHANGE	NON RECREATION	PERCENT <sup>1</sup> CHANGE	RECREATION	PERCENT <sup>1</sup> CHANGE	NON RECREATION	PERCENT <sup>1</sup> CHANGE
Scotts Bluff NM	132,166	4%			251,117	4%		
Sequoia NP <sup>7</sup>	838,060	-1%	360	-57%	27,236,671	-4%	1,440	-57%
Shenandoah NP <sup>4,7</sup>	1,571,019	-11%	10,962	-69%	10,174,076	-29%	2,743	-69%
Shiloh NMP	318,936	-3%	149,168	7%	554,394	-3%	29,834	7%
Sitka NHP	371,210	43%			178,857	42%		
Sleeping Bear Dunes NL	1,091,005	-5%			6,187,360	-5%		
Springfield Armory NHS	18,991	-40%			37,982	-40%		
Statue of Liberty NM	4,494,076	6%			13,482,228	6%		
Steamtown NHS	168,970	-20%			253,459	-20%		
Stones River NB	255,888	-1%	1,999	36%	313,250	3%	799	196%
Sunset Crater Volcano NM <sup>4</sup>	198,349	-59%	12,000	18%	247,938	-59%	3,996	18%
Thaddeus Kosciuszko NMem	7,259	-4%			1,817	-4%		
Theodore Roosevelt Birthplace NHS	26,895	58%	2,706	-57%	29,222	23%	8,112	-63%
Theodore Roosevelt Inaugural NHS <sup>4</sup>	8,300	-82%	0	-100%	26,504	-62%	0	-100%
Theodore Roosevelt Island <sup>4,7</sup>	131,890	48%			237,402	48%		
Theodore Roosevelt NP	436,081	-5%	6,412	0%	1,348,109	2%	2,118	0%
Thomas Jefferson Memorial	748,862	27%			374,434	27%		
Thomas Stone NHS	3,946	-19%			1,975	-19%		
Timpanogos Cave NM	97,250	22%			278,892	23%		
Timucuan Ecological and Historic Preserve	59,701	17%			53,157	18%		
Tonto NM	71,970	1%			82,515	-3%		
Tumacacori NHP	62,206	8%			41,470	8%		
Tuskegee Institute NHS <sup>4</sup>	490,861	-36%			359,400	-37%		
Tuzigoot NM <sup>4</sup>	115,411	-2%	655	-6%	86,559	-3%	166	-6%
Ulysses S. Grant NHS	14,124	87%			21,190	87%		

<sup>1</sup>Percent change from 1995

Table 5: Recreation Visits and Hours by Park in 1996 (continued)

PARK	VISITS				HOURS			
	RECREATION	PERCENT <sup>1</sup> CHANGE	NON RECREATION	PERCENT <sup>1</sup> CHANGE	RECREATION	PERCENT <sup>1</sup> CHANGE	NON RECREATION	PERCENT <sup>1</sup> CHANGE
Upper Delaware Scenic & Recreational River	494,267	0%	2,130	0%	2,511,305	-1%	535	0%
USS <i>Arizona</i> Memorial	1,415,855	3%	7,950	1%	2,831,710	3%	15,900	1%
Valley Forge NHP <sup>6</sup>	1,876,525	-3%	4,580,341	-11%	3,775,550	-3%	916,069	-11%
Vanderbilt Mansion NHS	368,899	4%			539,572	10%		
Vicksburg NMP <sup>7</sup>	968,615	8%			2,185,247	8%		
Vietnam Veterans Memorial	1,230,191	1%			615,099	1%		
Virgin Islands NP <sup>4</sup>	475,942	-11%	390,483	18%	2,927,044	-11%	180,038	-62%
Voyageurs NP	246,588	17%	13,638	-10%	1,335,122	8%	6,823	-10%
Walnut Canyon NM	153,287	3%	480	0%	203,559	3%	240	0%
War in the Pacific NHP	133,220	6%	1,324	73%	152,708	9%	666	73%
Washington Monument <sup>4,6</sup>	707,498	-25%			707,498	-25%		
Weir Farm NHS	11,127	6%			20,977	7%		
Whiskeytown-Shasta-Trinity NRA <sup>6</sup>	844,151	-8%	6,152	-5%	2,668,959	-18%	11,425	-1%
White House	1,179,458	5%			882,094	9%		
White Sands NM	616,699	2%	1,263	-40%	829,890	-1%	11,332	-39%
Whitman Mission NHS	77,338	-2%	888	0%	77,338	-2%	444	0%
William Howard Taft NHS	6,640	9%			6,640	9%		
Wilson's Creek NB	259,201	78%			530,240	75%		
Wind Cave NP <sup>4</sup>	781,171	-3%	277,899	-4%	2,251,235	-13%	91,706	-4%
Wolf Trap Farm Park for the Performing Arts	591,928	1%			2,367,712	1%		
Women's Rights NHP	30,490	-9%	1,344	0%	26,384	-8%	672	0%
Wrangell-St. Elias NP & Pres <sup>4</sup>	31,467	-42%	2,226	8%	1,447,482	122%	26,712	8%
Wright Brothers NMem	393,721	-9%	2,190	0%	393,721	-9%	1,095	0%
Wupatki NM	238,889	-9%	6,531	0%	480,316	-9%	3,920	0%
Yellowstone NP <sup>6,7</sup>	3,012,171	-4%	954,642	-2%	64,651,332	-4%	553,577	-2%

<sup>1</sup>Percent change from 1995

Table 5: Recreation Visits and Hours by Park in 1996 (continued)

PARK	VISITS				HOURS			
	RECREATION	PERCENT <sup>1</sup> CHANGE	NON RECREATION	PERCENT <sup>1</sup> CHANGE	RECREATION	PERCENT <sup>1</sup> CHANGE	NON RECREATION	PERCENT <sup>1</sup> CHANGE
Yosemite NP <sup>6,7</sup>	4,046,207	2%	144,350	1%	78,899,827	3%	3,703,738	1%
Yukon-Charley Rivers NPres <sup>4</sup>	1,005	53%	0	-100%	104,466	104%	0	-100%
Zion NP <sup>6,7</sup>	2,498,001	3%	21,900	0%	17,016,075	4%	5,475	0%
TOTALS	265,796,163	-1%	134,030,276	13%	1,251,434,549	-5%	72,164,568	17%

<sup>1</sup>Percent change from 1995

Table 6: Overnight Stays by Park in 1996

PARK	CONCESSIONER		NPS CAMPGROUNDS		NPS	OVERNIGHT STAYS		TOTAL
	LODGING	CAMPGROUNDS	TENTS	RV'S	BACKCOUNTRY	MISC.	NON RECR.	
Acadia NP <sup>4</sup>			108,939	35,526		9,512		153,977
Amistad NRA <sup>6</sup>			4,849	19,361	2,098	736		27,044
Antietam NB <sup>7</sup>						3,894		3,894
Apostle Islands NL					13,120	16,567		29,687
Arches NP <sup>4</sup>			27,266	12,905	555	4,931		45,657
Arkansas Post NMem						1		1
Assateague Island NS			42,340	12,906	2,095	8,388		65,729
Badlands NP	7,519		24,696	14,949	841			48,005
Bandelier NM <sup>7</sup>			8,099	5,254	904	2,039		16,296
Big Bend NP	47,565	11,261	45,644	36,265	32,373	36,503		209,611
Big Cypress NPres			3,529	10,886	12,959			27,374
Big South Fork NR & RA <sup>4</sup>	13,811		10,657	17,760	7,138	4,348		53,714
Big Thicket NPres <sup>6</sup>					2,328			2,328
Bighorn Canyon NRA			3,481	7,786	1,088	295		12,650
Black Canyon of the Gunnison NM <sup>7</sup>			5,912	4,751	2,156			12,819
Blue Ridge Parkway	66,670	20,888	59,474	53,147	8,561	1,294		210,034
Bryce Canyon NP <sup>4</sup>	46,009		40,402	68,726	3,183	1,546		159,866
Buck Island Reef NM						1,237		1,237
Buffalo National River	6,373		70,960	25,291	21,598	14,475		138,697
Canaveral NS					3,215			3,215
Canyon de Chelly NM <sup>4</sup>	40,416		25,260	29,973	1,841	3,596		101,086
Canyonlands NP			19,212	9,003	70,963	6,614		105,792
Cape Cod NS	4,344					23,516		27,860
Cape Hatteras NS			54,735	34,986		2,868	3,660	96,249
Cape Krusenstern NM					177		235	412

Table 6: Overnight Stays by Park in 1996 (continued)

PARK	CONCESSIONER		NPS CAMPGROUNDS		NPS BACKCOUNTRY	OVERNIGHT STAYS		TOTAL
	LODGING	CAMPGROUNDS	TENTS	RV'S		MISC.	NON RECR.	
Cape Lookout NS <sup>4, 5</sup>	21,983				6,386	692		29,061
Capitol Reef NP			17,963	21,711	2,678	1,918		44,270
Carlsbad Caverns NP					303			303
Catoctin Mountain Park <sup>7</sup>			7,807	2,047	142	32,634		42,630
Cedar Breaks NM			2,084	1,706				3,790
Chaco Culture NHP			18,266	5,292		264		23,822
Channel Islands NP <sup>4</sup>					6,165	85,562	52,423	144,150
Chesapeake and Ohio Canal NHP <sup>7</sup>			3,942	1,530	3,430			8,902
Chickamauga & Chattanooga NMP						1,946		1,946
Chickasaw NRA <sup>6</sup>			38,400	14,958		22,805		76,163
Chiricahua NM			5,583	6,718		999		13,300
Colorado NM			11,238	7,768	262			19,268
Congaree Swamp NM					195	522		717
Coulee Dam NRA <sup>7</sup>	10,811		44,329	63,804	4,866	21,816		145,626
Cowpens NB						41		41
Crater Lake NP <sup>4, 7</sup>	16,406	14,359	996		926			32,687
Craters of the Moon NM <sup>6</sup>			6,117	9,058	140	750		16,065
Cumberland Gap NHP <sup>5, 6</sup>			3,288	4,794	2,194	2,032		12,308
Cumberland Island NS <sup>7</sup>			14,207		7,868			22,075
Curecanti NRA			13,372	58,912	804	683		73,771
Cuyahoga Valley NRA <sup>4</sup>	2,552					2,914		5,466
Death Valley NP	30,094	2,444	53,610	138,684		139		224,971
Delaware Water Gap NRA <sup>4, 7</sup>		24,473			39,044	25,255		88,772
Denali NP & Pres <sup>4</sup>	23,586		15,888	40,628	37,188	2,240		119,530
Devils Postpile NM			3,369	2,098				5,467

Table 6: Overnight Stays by Park in 1996 (continued)

PARK	CONCESSIONER		NPS CAMPGROUNDS		NPS BACKCOUNTRY	MISC.	OVERNIGHT STAYS NON RECR.	TOTAL
	LODGING	CAMPGROUNDS	TENTS	RV'S				
Devils Tower NM <sup>7</sup>			9,368	6,951				16,319
Dinosaur NM			24,235	12,462	28,937	4,456		70,090
Dry Tortugas NP			44,448			31,782	11,440	87,670
El Malpais NM <sup>6</sup>					1,283			1,283
El Morro NM			1,333	474		52		1,859
Everglades NP <sup>4, 6, 7</sup>	39,284		15,633	30,629	15,679	2,616		103,841
Fire Island NS			6,450			45,033		51,483
Fort Donelson NB						205		205
Fort Necessity NB						178		178
Fort Pulaski NM						246		246
Gates of the Arctic NP & Pres <sup>4</sup>					3,776		330	4,106
Gateway NRA <sup>4</sup>						10,686		10,686
Gauley River NRA			1,306	1,708				3,014
Gettysburg NMP						22,193		22,193
Glacier Bay NP & Pres <sup>6</sup>	15,651		773		8,036	13,548	19,236	57,244
Glacier NP	112,982		101,427	84,917	27,806			327,132
Glen Canyon NRA	183,755	130,350	9,572	5,109	19,630	1,427,838	111	1,776,365
Golden Gate NRA <sup>4</sup>	42,387		2,948		744	13,638		59,717
Grand Canyon NP <sup>6, 7</sup>	577,921	41,723	151,166	81,454	265,293	26,022		1,143,579
Grand Portage NM					89			89
Grand Teton NP	231,115		140,174	121,552	28,750	19,318		540,909
Great Basin NP <sup>4</sup>			19,647	15,948	318			35,913
Great Sand Dunes NM <sup>6</sup>			24,220	13,177	1,300	4,408		43,105
Great Smoky Mountains NP <sup>6</sup>	10,823		181,195	143,769	102,022	22,495		460,304
Greenbelt Park			8,136	9,146				17,282

Table 6: Overnight Stays by Park in 1996 (continued)

PARK	CONCESSIONER		NPS CAMPGROUNDS		NPS BACKCOUNTRY	MISC.	OVERNIGHT STAYS NON RECR.	TOTAL
	LODGING	CAMPGROUNDS	TENTS	RV'S				
Guadalupe Mountains NP			10,720	6,329	3,220	1,405		21,674
Gulf Islands NS <sup>6</sup>			25,576	72,819	4,834	6,396	6,276	115,901
Haleakala NP			22,611		3,256	5,335		31,202
Hawaii Volcanoes NP <sup>6</sup>	31,485		5,483	259	5,025	71,230		113,482
Hot Springs NP			2,202	3,081				5,283
Indiana Dunes NL <sup>7</sup>			13,157	3,720				16,877
Isle Royale NP <sup>4</sup>	8,273	1,432	8,343		46,625	4,035	640	69,348
John D. Rockefeller, Jr., Mem Pkwy	31,816	31,057			2,113	2,085		67,071
John Day Fossil Beds NM						565		565
Joshua Tree NP			144,729	50,265	6,930	53,398		255,322
Kenai Fjords NP <sup>4</sup>			2,074		38	10		2,122
Kennesaw Mountain NBP <sup>7</sup>						473		473
Kings Canyon NP <sup>7</sup>	35,083		90,093	39,574	54,392	6,730		225,872
Kings Mountain NMP					47			47
Klondike Gold Rush NHP <sup>3</sup>			1,106	542	3,967			5,615
Kobuk Valley NP					256			256
Lake Chelan NRA	8,945				5,959	1,444		16,348
Lake Clark NP & Pres					3,119			3,119
Lake Mead NRA	56,859	206,715	121,350	154,444	410,290	133,164	400,095	1,482,917
Lake Meredith NRA			25,682	93,134	21,330	98,123		238,269
Lassen Volcanic NP	5,959		46,805	27,963	8,219	4,746		93,492
Lava Beds NM <sup>7</sup>			2,295	1,111		311		3,717
Mammoth Cave NP	26,148		37,728	21,328	3,550	6,730		95,484
Mesa Verde NP <sup>7</sup>	50,522		50,788	20,522		9,709		131,541
Moore's Creek NB <sup>7</sup>					38			38



Table 6: Overnight Stays by Park in 1996 (continued)

PARK	CONCESSIONER		NPS CAMPGROUNDS		NPS	MISC.	OVERNIGHT STAYS	
	LODGING	CAMPGROUNDS	TENTS	RV'S	BACKCOUNTRY		NON RECR.	TOTAL
Mount Rainier NP <sup>4, 6</sup>	39,672		70,709	32,270	40,336	2,952		185,939
Natchez Trace Parkway			7,881	11,928				19,809
Natural Bridges NM			4,889	2,851				7,740
Navajo NM			4,925	2,701	601	1,179		9,406
New River Gorge NR			10,236	5,678				15,914
Noatak NPres					4,744			4,744
North Cascades NP					16,797	121		16,918
Obed Wild and Scenic River			4,538	286	2,784			7,608
Olympic NP	67,144	9,227	106,085	108,267	151,113	2,502		444,338
Oregon Caves NM	5,559							5,559
Organ Pipe Cactus NM <sup>4</sup>			7,050	41,112	3,199	3,135		54,496
Ozark National Scenic Riverways	964		88,732	18,140	11,778	44,741		164,355
Padre Island NS			16,056	45,088	21,983	2,244		85,371
Perry's Victory and International Peace Mem <sup>4</sup>						1,928		1,928
Petrified Forest NP <sup>6</sup>					545			545
Pictured Rocks NL			11,536	3,195	11,647			26,378
Pinnacles NM			4,085	726				4,811
Point Reyes NS	7,556	2,371			20,344			30,271
Prince William Forest Park		16,886	6,707	1,029	164	26,919		51,705
Redwood NP <sup>7</sup>	5,240		14,436	63,883	3,102	7,113		93,774
Rio Grande Wild and Scenic River					4,069			4,069
Rocky Mountain NP <sup>4</sup>			105,456	65,292	42,394	18,836		231,978
Ross Lake NRA	4,874		26,103	17,668	15,990	1,858		66,493
Saguaro NP <sup>4</sup>					1,573			1,573
Saint Croix National Scenic Riverway					29,474			29,474

Table 6: Overnight Stays by Park in 1996 (continued)

PARK	CONCESSIONER		NPS CAMPGROUNDS		NPS BACKCOUNTRY	OVERNIGHT STAYS		TOTAL
	LODGING	CAMPGROUNDS	TENTS	RV'S		MISC.	NON RECR.	
Salinas Pueblo Missions NM						22		22
San Francisco Maritime NHP						11,047		11,047
Santa Monica Mountains NRA					144			144
Sequoia NP <sup>7</sup>	46,347		108,412	39,511	62,913	1,513		258,696
Shenandoah NP <sup>4,7</sup>	109,525		72,333	43,770	46,727			272,355
Sleeping Bear Dunes NL			42,338	37,080	22,319			101,737
Theodore Roosevelt NP			12,232	16,338	1,155	1,397		31,122
Valley Forge NHP <sup>6</sup>						1,250		1,250
Vicksburg NMP <sup>7</sup>						266		266
Virgin Islands NP <sup>4</sup>	11,613	12,434				137,055	13,705	174,807
Voyageurs NP	700				18,493			19,193
Whiskeytown-Shasta-Trinity NRA <sup>6</sup>		11,300		498	1,511	23,129		36,438
White Sands NM					2,334			2,334
Wind Cave NP <sup>4</sup>			2,155	1,254	589			3,998
Wrangell-St. Elias NP & Pres <sup>4</sup>					23,571	832	2,405	26,808
Wupatki NM					141			141
Yellowstone NP <sup>6,7</sup>	550,768	463,553	70,866	47,613	45,769	9,151		1,187,720
Yosemite NP <sup>6,7</sup>	1,030,368		592,413	302,072	107,182	63,279		2,095,314
Yukon-Charley Rivers NPres <sup>4</sup>					4,269			4,269
Zion NP <sup>6,7</sup>	67,096		121,650	61,884	18,384	14,205		283,219
TOTALS	3,754,573	1,000,473	3,680,310	2,771,704	2,124,793	2,772,849	510,556	16,615,258

Table 7: Buses by Park in 1996

PARK	BUSES	PARK	BUSES
Abraham Lincoln Birthplace NHS	300	Cape Cod NS	1,223
Acadia NP <sup>4</sup>	1,903	Capitol Reef NP	251
Adams NHS	161	Capulin Volcano NM	100
Agate Fossil Beds NM	19	Carlsbad Caverns NP	301
Allegheny Portage Railroad NHS	142	Casa Grande Ruins NM	123
Andersonville NHS <sup>7</sup>	374	Castillo de San Marcos NM	2,070
Andrew Johnson NHS	75	Castle Clinton NM	7,133
Antietam NB <sup>7</sup>	216	Catoctin Mountain Park <sup>7</sup>	177
Appomattox Court House NHP	58	Cedar Breaks NM	37
Arches NP <sup>4</sup>	1,809	Chaco Culture NHP	71
Arkansas Post NMem	29	Channel Islands NP <sup>4</sup>	1
Assateague Island NHS	720	Chickamauga & Chattanooga NMP	360
Aztec Ruins NM	159	Chiricahua NM	209
Badlands NP	958	Colonial NHP <sup>7</sup>	33,351
Bandelier NM <sup>7</sup>	558	Colorado NM	179
Bent's Old Fort NHS	172	Coronado NMem	79
Big Bend NP	191	Cowpens NB	42
Big Hole NB	44	Craters of the Moon NM <sup>6</sup>	262
Black Canyon of the Gunnison NM <sup>7</sup>	134	Cumberland Gap NHP <sup>5, 6</sup>	130
Blue Ridge Parkway	221	Curecanti NRA	106
Booker T. Washington NM	85	De Soto NMem	78
Boston NHP <sup>4, 7</sup>	4,634	Death Valley NP	2,753
Bryce Canyon NP <sup>4</sup>	6,571	Delaware Water Gap NRA <sup>4, 7</sup>	2,551
Canyon de Chelly NM <sup>4</sup>	407	Devils Postpile NM	5,635
Canyonlands NP	166	Devils Tower NM <sup>7</sup>	663

Table 7: Buses by Park in 1996 (continued)

PARK	BUSES	PARK	BUSES
Effigy Mounds NM <sup>4</sup>	151	Gauley River NRA	2,211
El Morro NM	75	General Grant NMem	687
Eleanor Roosevelt NHS	159	George Rogers Clark NHP	223
Everglades NP <sup>4, 6, 7</sup>	287	George Washington Birthplace NM <sup>7</sup>	182
Florissant Fossil Beds NM	69	George Washington Carver NM	220
Fort Caroline NMem	2	Gettysburg NMP	10,798
Fort Clatsop NMem	505	Glacier NP	4,759
Fort Davis NHS	314	Glen Canyon NRA	2,612
Fort Donelson NB	123	Golden Spike NHS <sup>7</sup>	44
Fort Frederica NM	288	Grand Canyon NP <sup>6, 7</sup>	31,570
Fort Laramie NHS	286	Grand Portage NM	19
Fort Larned NHS	74	Grand Teton NP	1,623
Fort Matanzas NM	20	Grant-Kohrs Ranch NHS	137
Fort McHenry NM & HS	1,852	Great Basin NP <sup>4</sup>	34
Fort Necessity NB	92	Great Sand Dunes NM <sup>6</sup>	643
Fort Pulaski NM	619	Great Smoky Mountains NP <sup>6</sup>	1300
Fort Raleigh NHS	273	Guadalupe Mountains NP	84
Fort Scott NHS	138	Guilford Courthouse NMP <sup>4, 6</sup>	6
Fort Smith NHS <sup>6, 7</sup>	127	Gulf Islands NS <sup>6</sup>	665
Fort Stanwix NM	52	Haleakala NP	20,854
Fort Union NM	57	Hampton NHS	68
Fort Union Trading Post NHS	69	Harpers Ferry NHP <sup>7</sup>	801
Fort Vancouver NHS	50	Hawaii Volcanoes NP <sup>6</sup>	13,912
Fredericksburg & Spotsylvania CNTY BM NMP	596	Herbert Hoover NHS	386
Friendship Hill NHS	14	Home of Franklin D. Roosevelt NHS	749

Table 7: Buses by Park in 1996 (continued)

PARK	BUSES	PARK	BUSES
Homestead National Monument of America <sup>4</sup>	109	Mammoth Cave NP	661
Hopewell Culture NHP	113	Manassas NBP	264
Hopewell Furnace NHS	11	Martin Van Buren NHS	41
Horseshoe Bend NMP	60	Mesa Verde NP <sup>7</sup>	1,491
Hot Springs NP	142	Minute Man NHP	5,790
Hovenweep NM <sup>6</sup>	35	Monocacy NB	13
Hubbell Trading Post NHS	224	Montezuma Castle NM	5,551
Indiana Dunes NL <sup>7</sup>	717	Morristown NHP	191
Jean Lafitte NHP & Pres	527	Mount Rainier NP <sup>4, 6</sup>	1,082
John Muir NHS	50	Mount Rushmore NMem <sup>4</sup>	2,974
Johnstown Flood NMem	172	Muir Woods NM	4,847
Kalaupapa NHP <sup>2</sup>	96	Natchez NHP	116
Kenai Fjords NP <sup>4</sup>	35	Natchez Trace Parkway	654
Kennesaw Mountain NBP <sup>7</sup>	564	Natural Bridges NM	59
Kings Canyon NP <sup>7</sup>	286	Navajo NM	114
Kings Mountain NMP	169	New River Gorge NR	686
Knife River Indian Villages NHS	41	Nez Perce NHP	268
Lake Mead NRA	1,371	Ninety Six NHS	68
Lassen Volcanic NP	194	Ocmulgee NM <sup>7</sup>	517
Lava Beds NM <sup>7</sup>	53	Oregon Caves NM	86
Lincoln Boyhood NMem	137	Organ Pipe Cactus NM <sup>4</sup>	24
Lincoln Home NHS	1,613	Ozark National Scenic Riverways	104
Lincoln Memorial <sup>6</sup>	22,131	Padre Island NS	3
Little Bighorn Battlefield NM	245	Pea Ridge NMP	64
Maggie L. Walker NHS	130	Pecos NHP	76

Table 7: Buses by Park in 1996 (continued)

PARK	BUSES	PARK	BUSES
Petersburg NB	192	Shiloh NMP	301
Petrified Forest NP <sup>6</sup>	686	Sleeping Bear Dunes NL	146
Petroglyph NM	147	Stones River NB	108
Pinnacles NM	79	Sunset Crater Volcano NM <sup>4</sup>	262
Pipe Spring NM <sup>4</sup>	71	Theodore Roosevelt Birthplace NHS	45
Pipestone NM	134	Theodore Roosevelt NP	153
Point Reyes NS	500	Thomas Jefferson Memorial	18,696
Prince William Forest Park	72	Tonto NM	47
Pu'uhonua o Honaunau NHP <sup>4</sup>	1,460	Tumacacori NHP	30
Puukohola Heiau NHS	129	Tuzigoot NM <sup>4</sup>	237
Redwood NP <sup>7</sup>	72	Vanderbilt Mansion NHS	462
Richmond NBP	99	Vicksburg NMP <sup>7</sup>	1,099
Rock Creek Park	24	Walnut Canyon NM	155
Rocky Mountain NP <sup>4</sup>	1,411	War in the Pacific NHP	548
Russell Cave NM	114	Washington Monument <sup>4,6</sup>	7,498
Sagamore Hill NHS	257	Whiskeytown-Shasta-Trinity NRA <sup>6</sup>	498
Saguaro NP <sup>4</sup>	199	White Sands NM	374
Saint Paul's Church NHS	65	Whitman Mission NHS	132
Salem Maritime NHS	185	Wilson's Creek NB	238
Salinas Pueblo Missions NM	72	Wind Cave NP <sup>4</sup>	127
San Juan Island NHP	31	Wolf Trap Farm Park for the Performing Arts	753
Saratoga NHP	15	Women's Rights NHP	121
Saugus Iron Works NHS	102	Wright Brothers NMem	559
Scotts Bluff NM	133	Wupatki NM	125
Sequoia NP <sup>7</sup>	112	Yellowstone NP <sup>6,7</sup>	6,944
Shenandoah NP <sup>4,7</sup>	775	Yosemite NP <sup>6,7</sup>	17,656
		Zion NP <sup>6,7</sup>	6,867
			<b>TOTAL 305,155</b>

**Table 8: Non Reporting and Affiliated Areas in 1996**

<b>PARK</b>	<b>STATUS</b>	<b>PARK</b>	<b>STATUS</b>
Alagnak Wild River	Not Reporting	Little River Canyon NPres	Not Reporting
American Memorial Park	Affiliated Area	Manzanar NHS	Not Reporting
Aniakchak NM & Pres	Not Reporting	Marsh-Billings NHP	Not Reporting
Appalachian NST	Not Reporting	Mary McLeod Bethune Council House NHS	Not Reporting
Benjamin Franklin NMem	Affiliated Area	McLoughlin House NHS	Affiliated Area
Bering Land Bridge NPres	Not Reporting	Mississippi National River and Recreation Area	Not Reporting
Blackstone River Valley NHC	Affiliated Area	Missouri National Recreational River	Not Reporting
Boston Harbor Islands NRA *	Not Reporting	Mojave NPres	Not Reporting
Brices Cross Roads NBS	Not Reporting	Natchez Trace National Scenic Trail	Not Reporting
Brown v. Board of Education NHS	Not Reporting	National Mall	Not Reporting
Cane River Creole NHP & Heritage Area	Not Reporting	National Park of American Samoa, The	Not Reporting
Chicago Portage NHS	Affiliated Area	New Bedford Whaling NHP *	Not Reporting
Chimney Rock NHS	Affiliated Area	New Orleans Jazz NHP	Not Reporting
David Berger NMem	Affiliated Area	Nicodemus NHS *	Not Reporting
Delaware and Lehigh Navigational Canal NHC	Affiliated Area	Niobrara National Scenic River	Not Reporting
Delaware NSR	Not Reporting	Palo Alto Battlefield NHS	Not Reporting
Ebey's Landing NHR	Not Reporting	Pinelands NRes	Affiliated Area
Father Marquette NMem	Affiliated Area	Port Chicago Naval Magazine NMem	Affiliated Area
Franklin Delano Roosevelt NM *	Not Reporting	Potomac Heritage National Scenic Trail	Not Reporting
Gloria Dei (Old Swedes') Church NHS	Affiliated Area	Poverty Point NM	Not Reporting
Great Egg Harbor S&RR	Not Reporting	Quinebaug & Shetucket Rivers Valley NHC	Affiliated Area
Green Springs Historic District	Affiliated Area	Red Hill Patrick Henry NMem	Affiliated Area
Historic Camden	Affiliated Area	Roosevelt Campobello International Park	Affiliated Area
Hohokam Pima NM	Not Reporting	Saint Croix Island International HS	Not Reporting
Ice Age National Scientific Reserve	Affiliated Area	Salt River Bay NHP & Ecological	Not Reporting
Illinois and Michigan Canal NHC	Affiliated Area	Sewall-Belmont House NHS	Affiliated Area
International Peace Garden	Affiliated Area	Tallgrass Prairie NPres *	Not Reporting
James A. Garfield NHS	Not Reporting	Touro Synagogue NHS	Affiliated Area
Jamestown NHS	Affiliated Area	Tupelo NB	Not Reporting
Katmai NP & Pres	Not Reporting	Washita Battlefield NHS *	Not Reporting
Keweenaw NHP	Not Reporting	Yucca House NM	Not Reporting

Figure 1

## Types of Areas Administered in 1996

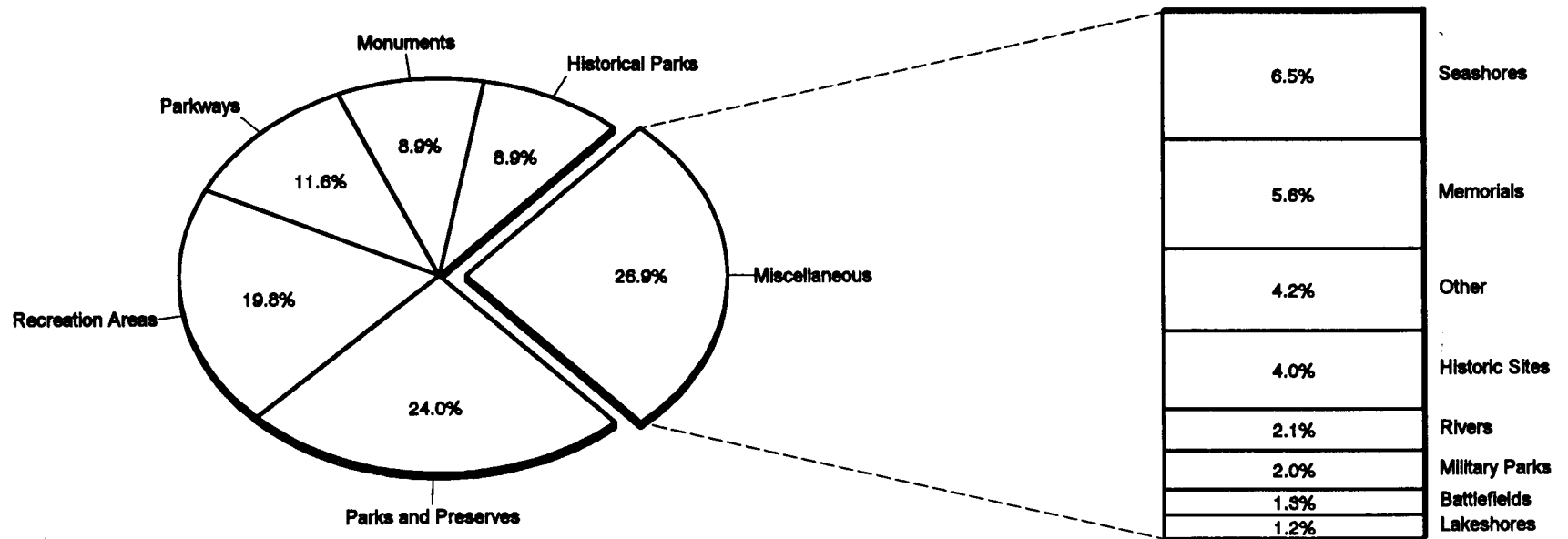




Figure 2

## Ten Most Visited Areas Account for 32% of all Visits in 1996

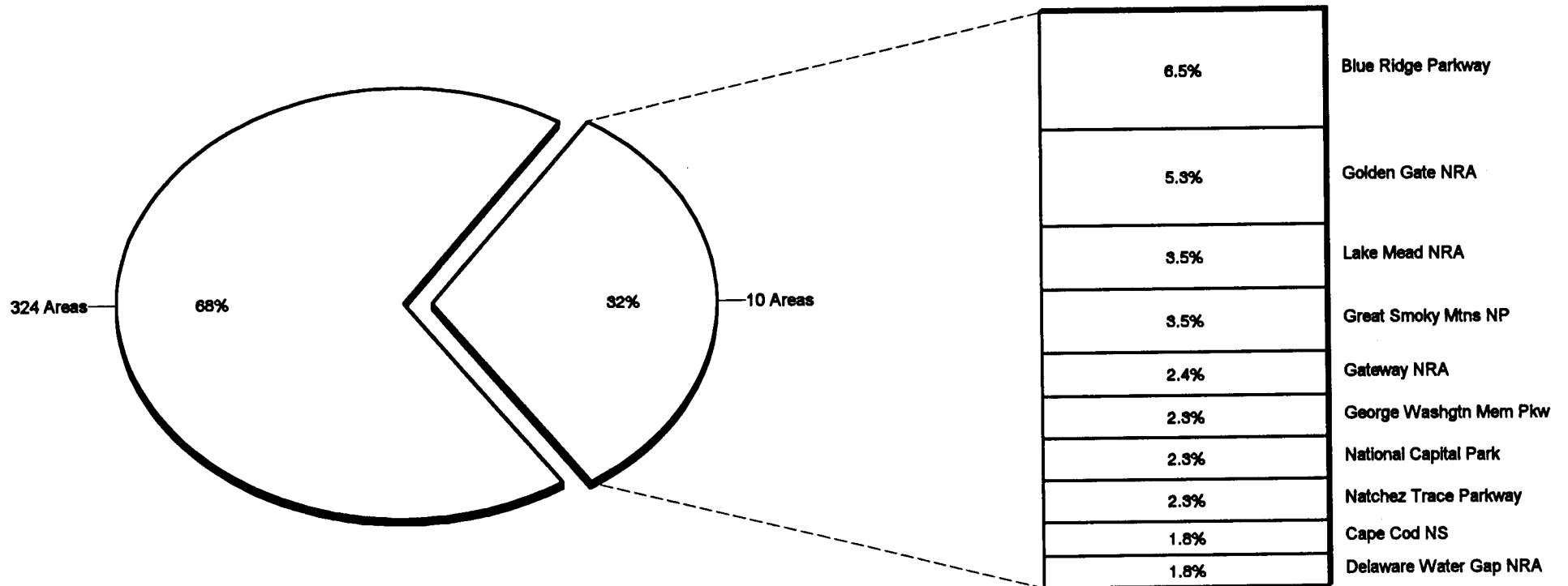


Figure 3

## Overnight Stays by Type of Accommodation in 1996

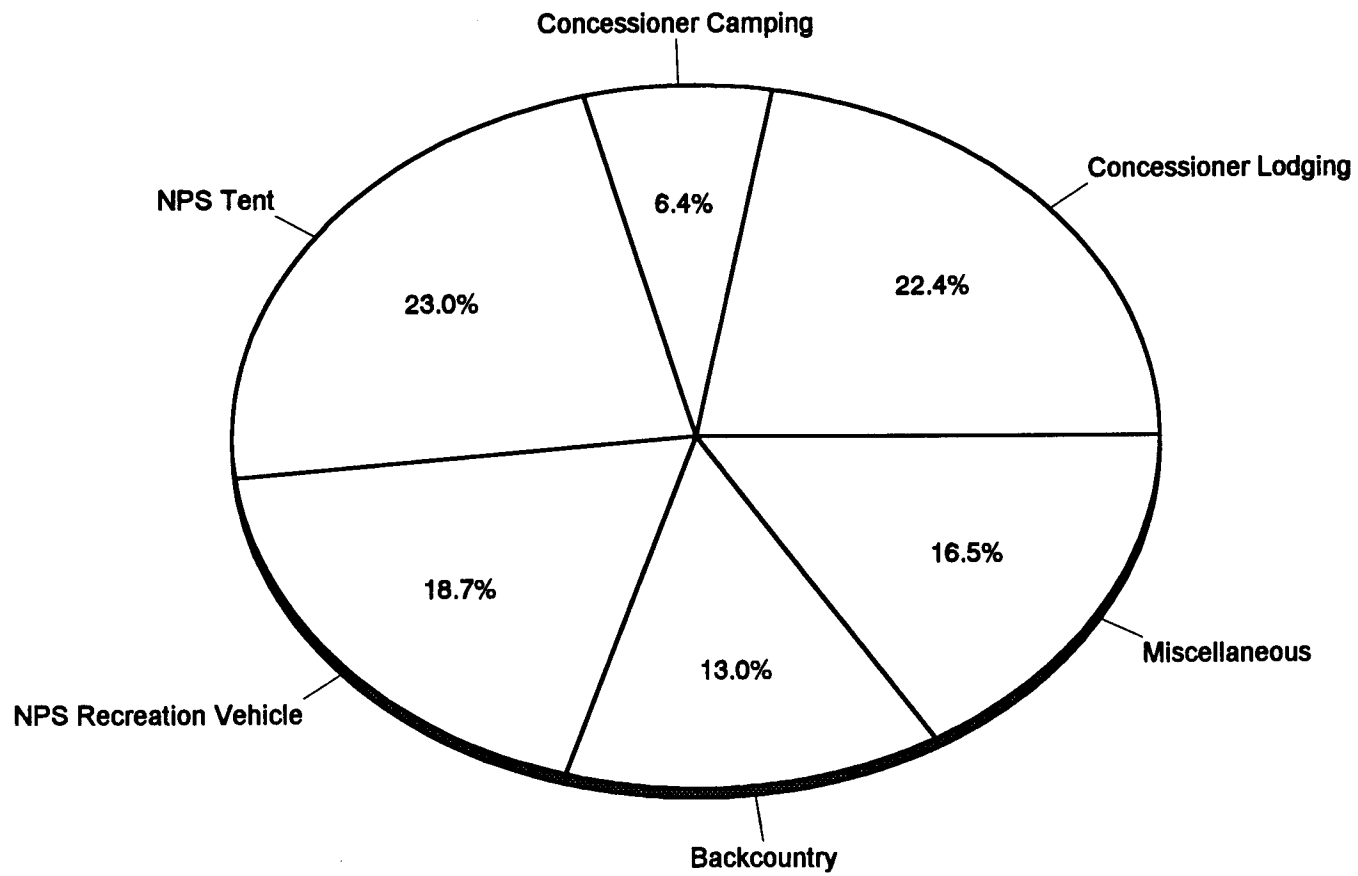


Figure 4

## Recreation Visits by Population Centers in 1996

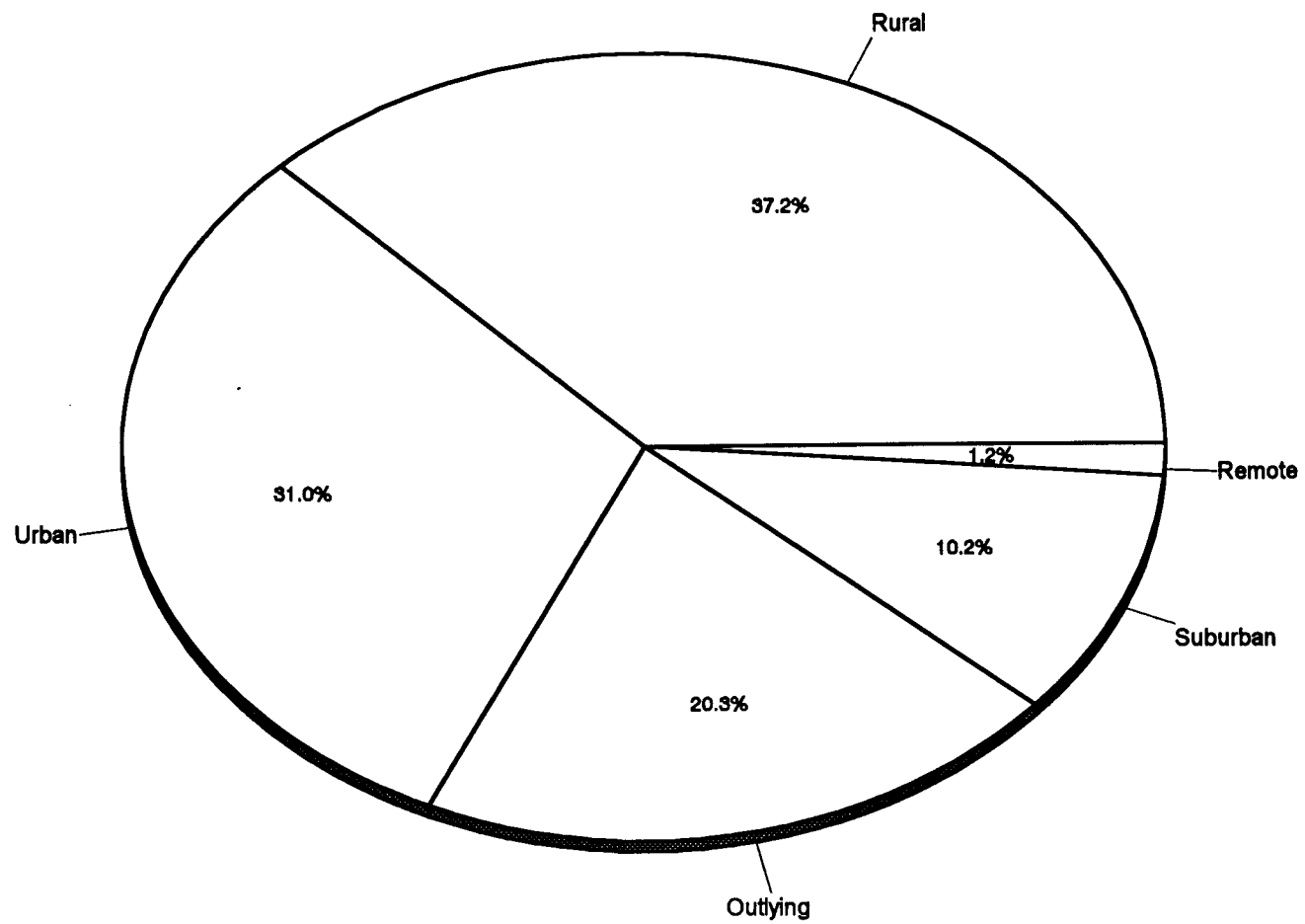


Figure 5

## 1995 vs. 1996 Recreation Visits by Month

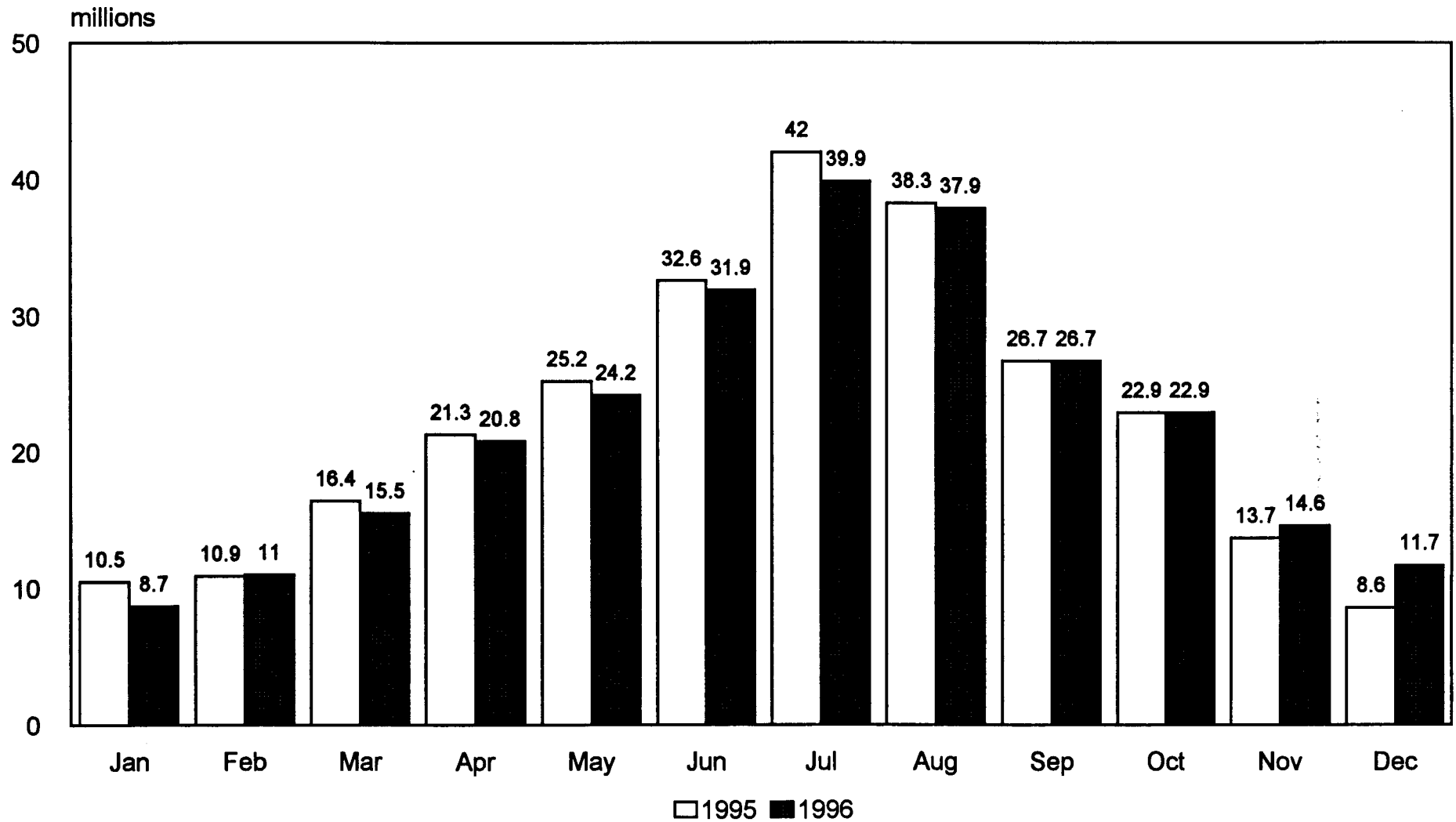
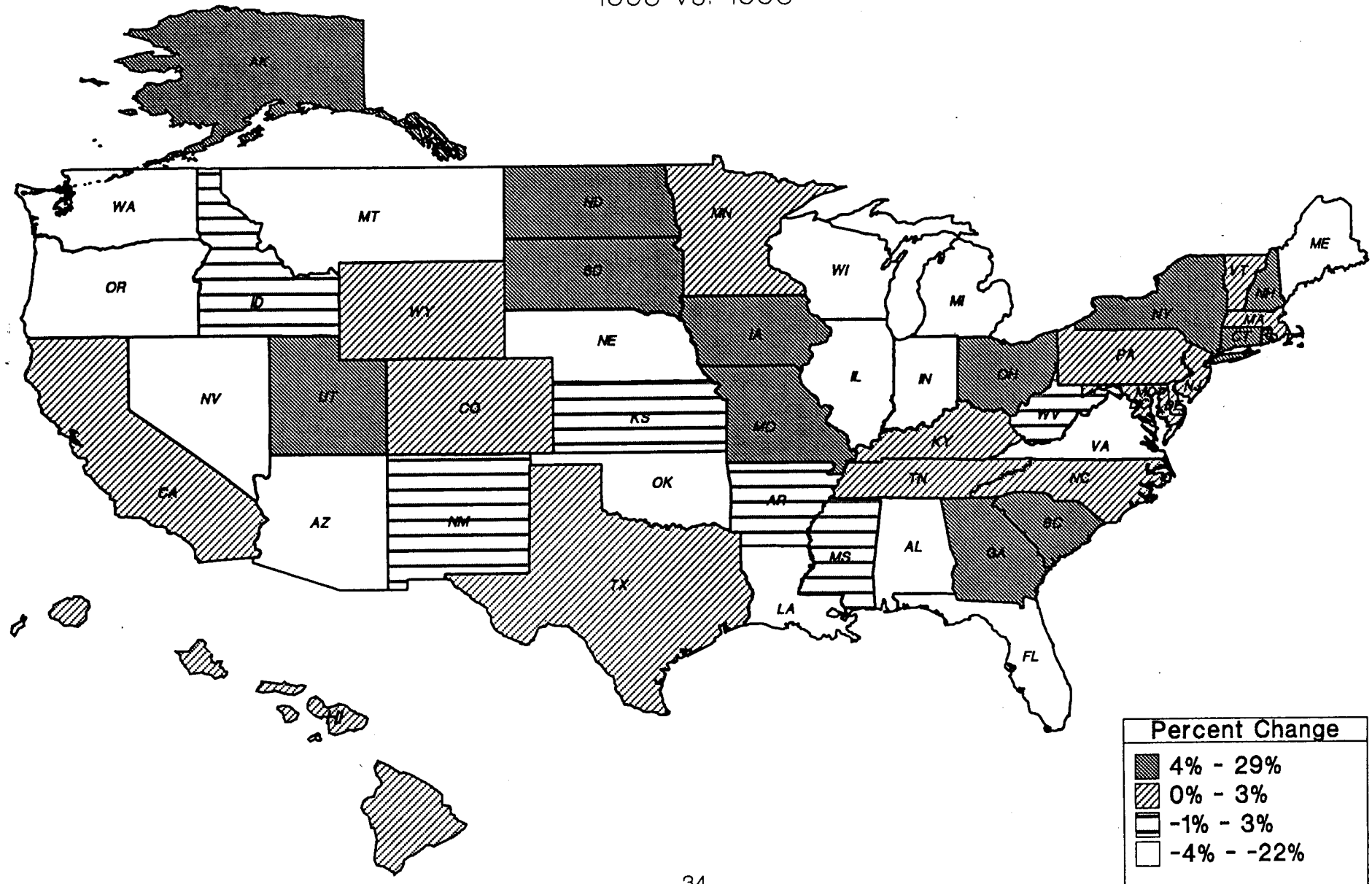


Figure 6  
Percentage Change of Recreation Visits by State  
1995 vs. 1996



**Table 9: Recreation Visits by State in 1996**

PARK	VISITS		HOURS	
	RECREATION	PERCENT <sup>1</sup> CHANGE	RECREATION	PERCENT <sup>1</sup> CHANGE
Horseshoe Bend NMP	95,851	-10%	232,164	-9%
Natchez Trace Parkway	426,203	4%	1,720,064	4%
Russell Cave NM	26,881	-25%	49,782	-20%
Tuskegee Institute NHS <sup>4</sup>	490,861	-36%	359,400	-37%
<b>ALABAMA TOTAL</b>	<b>1,039,796</b>	<b>-21%</b>	<b>2,361,410</b>	<b>-7%</b>
Cape Krusenstern NM	3,401	0%	24,596	0%
Denali NP & Pres <sup>4</sup>	341,385	-37%	5,498,174	-14%
Gates of the Arctic NP & Pres <sup>4</sup>	6,448	-9%	93,404	-57%
Glacier Bay NP & Pres <sup>5</sup>	304,374	21%	4,302,186	20%
Kenai Fjords NP <sup>4</sup>	274,034	19%	742,758	91%
Klondike Gold Rush NHP <sup>3</sup>	480,817	12%	1,987,018	10%
Kobuk Valley NP	2,781	0%	20,768	0%
Lake Clark NP & Pres	12,727	0%	80,525	8%
Noatak NP	7,103	0%	117,464	0%
Sitka NHP	371,210	43%	178,857	42%
Wrangell-St. Elias NP & Pres <sup>4</sup>	31,467	-42%	1,447,482	122%
Yukon-Charley Rivers NP	1,005	53%	104,466	104%
<b>ALASKA TOTAL</b>	<b>1,836,752</b>	<b>8%</b>	<b>14,597,698</b>	<b>9%</b>
Canyon de Chelly NM <sup>4</sup>	818,667	7%	6,125,034	6%
Casa Grande Ruins NM	155,941	-5%	132,551	-5%
Chiricahua NM	92,842	-1%	444,909	-4%
Coronado NM	93,656	2%	126,298	5%
Fort Bowie NHS	10,666	1%	21,332	1%
Glen Canyon NRA	200,400	0%	4,144,841	2%
Grand Canyon NP <sup>6,7</sup>	4,537,703	0%	69,007,742	-1%
Hubbell Trading Post NHS	253,123	6%	130,781	6%

Table 9: Visits by State in 1996 (continued)

PARK	VISITS		HOURS	
	RECREATION	PERCENT <sup>1</sup> CHANGE	RECREATION	PERCENT <sup>1</sup> CHANGE
Lake Mead NRA	2,337,712	-5%	19,021,890	-9%
Montezuma Castle NM	1,029,336	11%	1,029,336	11%
Navajo NM	100,323	-8%	325,351	-15%
Organ Pipe Cactus NM <sup>4</sup>	399,721	-3%	1,205,154	-4%
Petrified Forest NP <sup>6</sup>	829,495	-11%	1,793,287	-12%
Pipe Spring NM <sup>4</sup>	44,817	-3%	47,059	-3%
Saguaro NP <sup>4</sup>	671,643	-8%	974,378	-7%
Sunset Crater Volcano NM <sup>4</sup>	198,349	-59%	247,938	-59%
Tonto NM	71,970	1%	82,515	-3%
Tumacacori NHP	62,206	8%	41,470	8%
Tuzigoot NM <sup>4</sup>	115,411	-2%	86,559	-2%
Walnut Canyon NM	153,287	3%	203,559	3%
Wupatki NM	238,889	-9%	480,316	-9%
ARIZONA TOTAL	12,416,157	-4%	105,672,300	-1%
Arkansas Post NMem	47,919	19%	71,900	19%
Buffalo National River	716,530	2%	5,532,711	-6%
Fort Smith NHS <sup>6,7</sup>	75,056	-22%	99,824	-22%
Hot Springs NP	1,538,105	-5%	1,034,237	-14%
Pea Ridge NMP	90,839	-15%	181,678	119%
ARKANSAS TOTAL	2,468,449	-3%	6,920,350	-6%
Cabrillo NM	1,047,672	-1%	1,514,352	-1%
Channel Islands NP <sup>4</sup>	490,715	-7%	5,650,181	-16%
Death Valley NP	1,189,215	7%	8,687,656	0%
Devils Postpile NM	123,364	17%	530,118	17%
Eugene O'Neill NHS	3,440	11%	12,073	40%
Fort Point NHS	1,483,089	6%	865,761	6%
Golden Gate NRA <sup>4</sup>	14,043,984	-4%	21,567,696	-48%

Table 9: Visits by State in 1996 (continued)

PARK	VISITS		HOURS	
	RECREATION	PERCENT <sup>1</sup> CHANGE	RECREATION	PERCENT <sup>1</sup> CHANGE
John Muir NHS	28,045	0%	49,253	6%
Joshua Tree NP	1,095,046	-11%	8,648,707	-3%
Kings Canyon NP <sup>7</sup>	502,749	-40%	15,543,818	-46%
Lassen Volcanic NP	351,632	0%	4,073,124	3%
Lava Beds NM <sup>7</sup>	108,298	-11%	315,353	-23%
Muir Woods NM	1,410,655	9%	1,880,404	9%
Pinnacles NM	164,465	-7%	594,836	-8%
Point Reyes NS	2,272,398	3%	10,231,020	5%
Redwood NP <sup>7</sup>	426,938	-23%	3,460,888	-36%
San Francisco Maritime NHP	3,670,972	1%	4,189,236	2%
Santa Monica Mountains NRA	428,524	10%	744,690	5%
Sequoia NP <sup>7</sup>	838,060	-1%	27,236,671	-4%
Whiskeytown-Shasta-Trinity NRA <sup>6</sup>	844,151	-8%	2,668,959	-18%
Yosemite NP <sup>6, 7</sup>	4,046,207	2%	78,899,827	3%
CALIFORNIA TOTAL	34,569,619	-2%	197,364,623	-15%
Bent's Old Fort NHS	37,640	-2%	47,051	-2%
Black Canyon of the Gunnison NM <sup>7</sup>	200,125	-9%	1,031,067	-5%
Colorado NM	318,717	28%	974,725	16%
Curecanti NRA	1,017,256	2%	4,678,764	2%
Dinosaur NM	343,458	-7%	1,892,537	-3%
Florissant Fossil Beds NM	91,278	0%	112,502	-1%
Great Sand Dunes NM <sup>6</sup>	309,283	-4%	1,747,813	-6%
Hovenweep NM <sup>6</sup>	12,111	2%	16,647	-65%
Mesa Verde NP <sup>7</sup>	617,360	-7%	5,145,861	-10%
Rocky Mountain NP <sup>4</sup>	2,923,755	2%	21,254,178	3%
COLORADO TOTAL	5,870,983	1%	36,901,145	-1%



Table 9: Visits by State in 1996 (continued)

PARK	VISITS		HOURS	
	RECREATION	PERCENT <sup>1</sup> CHANGE	RECREATION	PERCENT <sup>1</sup> CHANGE
Weir Farm NHS	11,127	6%	20,977	7%
CONNECTICUT TOTAL	11,127	6%	20,977	7%
Chesapeake and Ohio Canal NHP <sup>7</sup>	768,833	-44%	5,338,326	-26%
Ford's Theatre NHS	995,416	-3%	1,022,202	-4%
Frederick Douglass NHS	82,326	55%	45,041	-15%
Korean War Veterans Mem <sup>2</sup>	863,639	0%	431,823	0%
Lincoln Memorial <sup>6</sup>	1,190,961	-8%	595,484	-8%
Lyndon B Johnson Mem Grove on the Potomac	489,122	-22%	244,565	-22%
National Capital Parks <sup>3, 4, 7</sup>	5,485,387	11%	6,301,519	11%
Pennsylvania Avenue NHS	212,260	0%	70,047	0%
Rock Creek Park	1,873,822	-9%	2,485,376	-12%
Thomas Jefferson Memorial	748,862	27%	374,434	27%
Vietnam Veterans Memorial	1,230,191	1%	615,099	1%
Washington Monument <sup>4, 6</sup>	707,498	-25%	707,498	-25%
White House	1,179,458	5%	882,094	9%
DISTRICT OF COLUMBIA TOTAL	15,827,775	2%	19,113,508	-7%
Big Cypress NPres	424,920	16%	1,678,039	24%
Biscayne NP <sup>7</sup>	338,603	-42%	1,015,809	-42%
Canaveral NS	1,496,961	8%	3,810,926	9%
Castillo de San Marcos NM	668,200	4%	501,151	4%
De Soto NMem	206,131	-3%	340,116	-3%
Dry Tortugas NP	35,127	7%	440,043	15%
Everglades NP <sup>4, 6, 7</sup>	890,167	8%	5,545,100	20%
Fort Caroline NMem	122,565	-1%	122,565	-1%
Fort Matanzas NM	455,402	1%	467,747	1%
Gulf Islands NS <sup>6</sup>	1,935,778	-43%	6,436,631	-37%

Table 9: Visits by State in 1996 (continued)

PARK	VISITS		HOURS	
	RECREATION	PERCENT <sup>1</sup> CHANGE	RECREATION	PERCENT <sup>1</sup> CHANGE
Timucuan Ecological and Historic Preserve	59,701	17%	53,157	18%
FLORIDA TOTAL	6,633,555	-18%	20,411,284	-12%
Andersonville NHS <sup>7</sup>	197,394	26%	394,788	26%
Chattahoochee River NRA	3,540,375	2%	14,161,500	2%
Chickamauga & Chattanooga NMP	487,449	-6%	922,006	-3%
Cumberland Island NS <sup>7</sup>	43,182	8%	832,074	7%
Fort Frederica NM	308,819	3%	311,674	3%
Fort Pulaski NM	343,706	10%	863,696	9%
Jimmy Carter NHS <sup>7</sup>	39,766	23%	19,887	23%
Kennesaw Mountain NBP <sup>7</sup>	1,172,130	2%	2,014,381	3%
Martin Luther King, Jr., NHS <sup>7</sup>	774,917	82%	1,162,378	73%
Ocmulgee NM <sup>7</sup>	129,818	13%	194,730	13%
GEORGIA TOTAL	7,037,556	8%	20,877,114	6%
War in the Pacific NHP	133,220	6%	152,708	9%
GUAM TOTAL	133,220	6%	152,708	9%
Haleakala NP	1,553,344	-3%	3,855,536	-1%
Hawaii Volcanoes NP <sup>8</sup>	1,231,557	5%	8,194,893	4%
Kalaupapa NHP <sup>2</sup>	62,314	0%	498,512	0%
Kaloko-Honokohau NHP	48,836	-2%	169,591	0%
Pu'uhonua o Honaunau NHP <sup>4</sup>	441,828	1%	441,828	1%
Puukohola Heiau NHS	46,593	2%	23,298	2%
USS <i>Arizona</i> Memorial	1,415,855	3%	2,831,710	3%
HAWAII TOTAL	4,800,327	3%	16,015,368	6%
City of Rocks NRes <sup>6</sup>	67,785	-13%	237,250	-13%
Craters of the Moon NM <sup>6</sup>	217,586	-8%	660,590	-9%

Table 9: Visits by State in 1996 (continued)

PARK	VISITS		HOURS	
	RECREATION	PERCENT <sup>1</sup> CHANGE	RECREATION	PERCENT <sup>1</sup> CHANGE
Hagerman Fossil Beds NM	11,793	-8%	17,693	-8%
Nez Perce NHP	263,241	5%	337,987	-1%
IDAHO TOTAL	560,405	-3%	1,253,520	-8%
Lincoln Home NHS	412,524	-4%	370,472	-5%
ILLINOIS TOTAL	412,524	-4%	370,472	-5%
George Rogers Clark NHP	135,132	3%	181,078	3%
Indiana Dunes NL <sup>7</sup>	1,526,166	-10%	3,805,775	-10%
Lincoln Boyhood NMem	130,805	-3%	147,155	-3%
INDIANA TOTAL	1,792,103	-9%	4,134,008	-9%
Effigy Mounds NM <sup>4</sup>	93,894	25%	234,738	32%
Herbert Hoover NHS	241,757	-1%	241,757	0%
IOWA TOTAL	335,651	6%	476,495	13%
Fort Larned NHS	45,985	-5%	91,970	-5%
Fort Scott NHS	48,406	-2%	72,616	-2%
KANSAS TOTAL	94,391	-3%	164,586	-4%
Abraham Lincoln Birthplace NHS	249,344	-7%	249,344	-7%
Big South Fork NR & RA <sup>4</sup>	342,353	-4%	2,365,659	-1%
Cumberland Gap NHP <sup>5,6</sup>	1,051,683	3%	2,401,386	5%
Mammoth Cave NP	1,896,829	-2%	4,939,466	-3%
KENTUCKY TOTAL	3,540,209	-1%	9,955,855	-1%
Jean Lafitte NHP & Pres	849,136	-10%	1,495,084	-11%
LOUISIANA TOTAL	849,136	-10%	1,495,084	-11%
Acadia NP <sup>4</sup>	2,704,831	-5%	14,442,606	-5%
MAINE TOTAL	2,704,831	-5%	14,442,606	-5%

Table 9: Visits by State in 1996 (continued)

PARK	VISITS		HOURS	
	RECREATION	PERCENT <sup>1</sup> CHANGE	RECREATION	PERCENT <sup>1</sup> CHANGE
Antietam NB <sup>7</sup>	246,082	14%	708,584	36%
Assateague Island NS	630,448	-1%	5,412,635	-1%
Catoctin Mountain Park <sup>7</sup>	484,892	-12%	2,097,467	-7%
Chesapeake and Ohio Canal NHP <sup>7</sup>	81,406	-44%	565,340	-26%
Clara Barton NHS	11,341	-15%	11,341	-15%
Fort McHenry NM & HS	610,932	1%	916,400	1%
Fort Washington Park	247,954	1%	972,742	1%
Greenbelt Park	322,800	-3%	996,231	-5%
Hampton NHS	30,218	-2%	34,745	-3%
Monocacy NB	11,312	-47%	2,830	-46%
National Capital Parks <sup>3, 4, 7</sup>	609,488	-4%	700,169	11%
Piscataway Park	194,494	32%	370,873	37%
Thomas Stone NHS	3,946	-19%	1,975	-19%
<b>MARYLAND TOTAL</b>	<b>3,485,313</b>	<b>0%</b>	<b>12,791,332</b>	<b>-1%</b>
Adams NHS	38,230	-19%	35,280	-20%
Boston African American NHS	345,739	-3%	120,271	-3%
Boston NHP <sup>4, 7</sup>	2,260,565	23%	2,259,052	53%
Cape Cod NS	4,901,782	-5%	9,858,767	-6%
Frederick Law Olmsted NHS	4,660	-9%	9,320	-9%
John Fitzgerald Kennedy NHS	15,717	70%	7,861	70%
Longfellow NHS	13,131	-19%	19,698	-19%
Lowell NHP	541,515	9%	696,254	6%
Minute Man NHP	955,938	-11%	477,974	-11%
Salem Maritime NHS	600,778	-13%	290,933	-32%
Saugus Iron Works NHS	21,451	3%	32,181	3%
Springfield Armory NHS	18,991	-40%	37,982	-40%
<b>MASSACHUSETTS TOTAL</b>	<b>9,718,497</b>	<b>0%</b>	<b>13,845,573</b>	<b>0%</b>

**Table 9: Visits by State in 1996 (continued)**

PARK	VISITS		HOURS	
	RECREATION	PERCENT <sup>1</sup> CHANGE	RECREATION	PERCENT <sup>1</sup> CHANGE
Isle Royale NP <sup>4</sup>	23,445	0%	1,681,527	6%
Pictured Rocks NL	403,684	-13%	2,089,540	-12%
Sleeping Bear Dunes NL	1,091,005	-5%	6,187,360	-5%
<b>MICHIGAN TOTAL</b>	<b>1,518,134</b>	<b>-7%</b>	<b>9,958,427</b>	<b>-5%</b>
Grand Portage NM	71,746	-5%	46,261	-9%
Pipestone NM	96,157	-8%	240,397	-7%
Saint Croix National Scenic Riverway	211,326	-8%	1,385,464	-7%
Voyageurs NP	246,588	-5%	1,335,122	8%
<b>MINNESOTA TOTAL</b>	<b>625,817</b>	<b>1%</b>	<b>3,007,244</b>	<b>-1%</b>
Gulf Islands NS <sup>6</sup>	645,259	-43%	2,145,544	-37%
Natchez NHP	49,110	17%	80,800	49%
Natchez Trace Parkway	4,870,888	-4%	19,657,871	4%
Vicksburg NMP <sup>7</sup>	968,615	8%	2,185,247	8%
<b>MISSISSIPPI TOTAL</b>	<b>6,533,872</b>	<b>-3%</b>	<b>24,069,462</b>	<b>-1%</b>
George Washington Carver NM	35,042	-5%	45,556	-5%
Harry S Truman NHS	65,463	-2%	51,566	-8%
Jefferson National Expansion Memorial <sup>7</sup>	3,649,308	13%	14,597,232	13%
Ozark National Scenic Riverways	1,475,942	-3%	4,235,761	-3%
Ulysses S. Grant NHS	14,124	87%	21,190	87%
Wilson's Creek NB	259,201	78%	530,240	75%
<b>MISSOURI TOTAL</b>	<b>5,499,080</b>	<b>10%</b>	<b>19,481,545</b>	<b>10%</b>
Big Hole NB	50,235	-22%	121,899	24%
Bighorn Canyon NRA	162,828	-2%	651,937	-21%
Glacier NP	1,720,805	-6%	14,375,165	-7%
Grant-Kohrs Ranch NHS	29,175	-1%	35,887	-1%
Little Bighorn Battlefield NM	363,841	-11%	364,014	-11%

Table 9: Visits by State in 1996 (continued)

PARK	VISITS		HOURS	
	RECREATION	PERCENT <sup>1</sup> CHANGE	RECREATION	PERCENT <sup>1</sup> CHANGE
Yellowstone NP <sup>6,7</sup>	1,536,207	-4%	32,972,179	-4%
MONTANA TOTAL	3,863,091	-7%	48,521,081	-5%
Agate Fossil Beds NM	16,567	-11%	22,227	-11%
Homestead National Monument of America <sup>4</sup>	36,384	12%	61,699	9%
Scotts Bluff NM	132,166	4%	251,117	4%
NEBRASKA TOTAL	185,117	-4%	335,043	2%
Great Basin NP <sup>4</sup>	86,635	-1%	1,116,629	24%
Lake Mead NRA	7,013,135	-5%	57,065,670	-9%
NEVADA TOTAL	7,099,770	-5%	58,182,299	-9%
Saint-Gaudens NHS	37,498	8%	73,282	8%
NEW HAMPSHIRE TOTAL	37,498	8%	73,282	8%
Delaware Water Gap NRA <sup>4,7</sup>	3,306,992	-1%	14,859,945	0%
Edison NHS	53,603	-4%	68,073	-10%
Gateway NRA <sup>4</sup>	1,276,300	5%	2,559,066	-40%
Morristown NHP	498,256	-15%	1,396,371	-16%
NEW JERSEY TOTAL	5,135,151	-1%	18,883,455	-9%
Aztec Ruins NM	65,955	-9%	98,934	-9%
Bandelier NM <sup>7</sup>	363,447	-18%	1,362,133	-18%
Capulin Volcano NM	64,680	-3%	91,050	-3%
Carlsbad Caverns NP	557,217	-5%	2,210,473	-5%
Chaco Culture NHP	76,868	-9%	926,521	-9%
El Malpais NM <sup>8</sup>	101,158	1%	427,726	3%
El Morro NM	82,655	-1%	200,612	-15%
Fort Union NM	19,374	0%	22,861	0%
Gila Cliff Dwellings NM	56,933	-9%	56,933	-9%
Pecos NHP	40,400	-2%	49,521	-3%

Table 9: Visits by State in 1996 (continued)

PARK	VISITS		HOURS	
	RECREATION	PERCENT <sup>1</sup> CHANGE	RECREATION	PERCENT <sup>1</sup> CHANGE
Petroglyph NM	90,533	3%	103,649	16%
Salinas Pueblo Missions NM	44,913	-17%	92,977	-15%
White Sands NM	616,699	2%	829,890	-1%
<b>NEW MEXICO TOTAL</b>	<b>2,180,832</b>	<b>-3%</b>	<b>6,473,280</b>	<b>-8%</b>
Castle Clinton NM	3,753,944	2%	1,899,408	3%
Eleanor Roosevelt NHS	93,998	11%	141,001	11%
Federal Hall NMem <sup>7</sup>	259,932	31%	144,033	28%
Fire Island NS	385,706	11%	1,929,438	-14%
Fort Stanwix NM	48,429	-14%	72,647	-14%
Gateway NRA <sup>4</sup>	5,105,202	5%	10,236,266	-40%
General Grant NMem	98,127	-15%	125,318	-33%
Hamilton Grange NMem <sup>8</sup>	0	0%	0	0%
Home of Franklin D. Roosevelt NHS	193,170	14%	354,446	18%
Martin Van Buren NHS	17,807	-8%	19,119	-10%
Sagamore Hill NHS	71,195	0%	177,991	0%
Saint Paul's Church NHS	4,346	-3%	5,606	-4%
Saratoga NHP	137,366	-23%	366,065	-19%
Statue of Liberty NM	4,494,076	6%	13,482,228	6%
Theodore Roosevelt Birthplace NHS	26,895	58%	29,222	23%
Theodore Roosevelt Inaugural NHS <sup>4</sup>	8,300	-82%	26,504	-62%
Upper Delaware Scenic & Recreational River	247,133	0%	1,255,653	-1%
Vanderbilt Mansion NHS	368,899	40%	539,572	10%
Women's Rights NHP	30,490	-9%	26,384	-8%
<b>NEW YORK TOTAL</b>	<b>15,345,015</b>	<b>4%</b>	<b>30,830,901</b>	<b>-17%</b>
Blue Ridge Parkway	10,644,818	-1%	66,994,217	-1%
Cape Hatteras NS	2,355,580	-1%	10,895,904	-2%
Cape Lookout NS <sup>4, 8</sup>	379,370	9%	1,935,778	3%

Table 9: Visits by State in 1996 (continued)

PARK	VISITS		HOURS	
	RECREATION	PERCENT <sup>1</sup> CHANGE	RECREATION	PERCENT <sup>1</sup> CHANGE
Carl Sandburg Home NHS <sup>7</sup>	42,879	-12%	56,701	-9%
Fort Raleigh NHS	308,348	7%	513,794	7%
Great Smoky Mountains NP <sup>6</sup>	4,076,893	2%	30,941,069	0%
Guilford Courthouse NMP <sup>4, 5</sup>	614,766	167%	327,815	137%
Moore's Creek NB <sup>7</sup>	58,516	1%	37,258	-7%
Wright Brothers NMem	393,721	-9%	393,721	-9%
<b>NORTH CAROLINA TOTAL</b>	<b>18,874,891</b>	<b>2%</b>	<b>112,096,257</b>	<b>-1%</b>
Fort Union Trading Post NHS	23,448	15%	29,418	31%
Knife River Indian Villages NHS	15,987	-7%	26,195	-10%
Theodore Roosevelt NP	436,081	-5%	1,348,109	2%
<b>NORTH DAKOTA TOTAL</b>	<b>475,516</b>	<b>4%</b>	<b>1,403,722</b>	<b>4%</b>
Cuyahoga Valley NRA <sup>4</sup>	3,455,878	8%	10,472,810	7%
Dayton Aviation NHP <sup>2</sup>	39,262	0%	78,524	0%
Hopewell Culture NHP	37,005	-5%	44,101	5%
Perry's Victory and International Peace Mem <sup>4</sup>	197,506	5%	213,006	17%
William Howard Taft NHS	6,640	9%	6,640	9%
<b>OHIO TOTAL</b>	<b>3,736,291</b>	<b>9%</b>	<b>10,814,881</b>	<b>8%</b>
Chickasaw NRA <sup>6</sup>	1,551,574	-8%	5,627,021	-12%
<b>OKLAHOMA TOTAL</b>	<b>1,551,574</b>	<b>-8%</b>	<b>5,627,021</b>	<b>-12%</b>
Crater Lake NP <sup>4, 7</sup>	476,957	-13%	2,254,210	-13%
Fort Clatsop NMem	179,573	-8%	215,311	-8%
John Day Fossil Beds NM	120,556	-5%	146,625	-5%
Oregon Caves NM	98,383	-4%	384,093	-4%
<b>OREGON TOTAL</b>	<b>875,469</b>	<b>-5%</b>	<b>3,000,239</b>	<b>-11%</b>



**Table 9: Visits by State in 1996 (continued)**

<b>PARK</b>	<b>VISITS</b>		<b>HOURS</b>	
	<b>RECREATION</b>	<b>PERCENT<sup>1</sup> CHANGE</b>	<b>RECREATION</b>	<b>PERCENT<sup>1</sup> CHANGE</b>
Allegheny Portage Railroad NHS	139,446	-4%	152,560	-6%
Delaware Water Gap NRA <sup>4, 7</sup>	1,350,743	-1%	6,069,555	0%
Edgar Allan Poe NHS	15,549	16%	15,549	16%
Eisenhower NHS	84,465	-12%	139,265	-21%
Fort Necessity NB	96,103	-11%	114,190	-7%
Friendship Hill NHS	19,228	11%	35,420	23%
Gettysburg NMP	1,632,720	-1%	5,037,022	-3%
Hopewell Furnace NHS	91,412	4%	109,695	4%
Independence NHP <sup>6</sup>	3,128,028	2%	4,705,568	2%
Johnstown Flood NMem	141,116	6%	149,538	5%
Steamtown NHS	168,970	-20%	253,459	-20%
Thaddeus Kosciuszko NMem	7,259	-4%	1,817	-4%
Upper Delaware Scenic & Recreational River	247,134	0%	1,255,652	-1%
Valley Forge NHP <sup>6</sup>	1,876,525	-3%	3,775,550	-3%
<b>PENNSYLVANIA TOTAL</b>	<b>8,998,698</b>	<b>-1%</b>	<b>21,814,840</b>	<b>-1%</b>
San Juan NHS <sup>7</sup>	1,051,187	-22%	1,999,876	-23%
<b>PUERTO RICO TOTAL</b>	<b>1,051,187</b>	<b>-22%</b>	<b>1,999,876</b>	<b>-23%</b>
Roger Williams NMem	49,513	29%	42,695	30%
<b>RHODE ISLAND TOTAL</b>	<b>49,513</b>	<b>29%</b>	<b>42,695</b>	<b>30%</b>
Charles Pinckney NHS	24,340	120%	48,680	120%
Congaree Swamp NM	62,614	-8%	202,182	-8%
Cowpens NB	189,434	20%	117,683	5%
Fort Sumter NM	322,702	-2%	372,582	-3%
Kings Mountain NMP	227,709	-1%	213,097	-2%
Ninety Six NHS	37,591	19%	46,990	19%
<b>SOUTH CAROLINA TOTAL</b>	<b>864,390</b>	<b>4%</b>	<b>1,001,214</b>	<b>0%</b>

Table 9: Visits by State in 1996 (continued)

PARK	VISITS		HOURS	
	RECREATION	PERCENT <sup>1</sup> CHANGE	RECREATION	PERCENT <sup>1</sup> CHANGE
Badlands NP	1,024,705	-5%	4,572,411	-6%
Jewel Cave NM	144,634	-6%	164,048	-8%
Mount Rushmore NMem <sup>4</sup>	1,904,991	13%	2,508,227	13%
Wind Cave NP <sup>4</sup>	781,171	-3%	2,251,235	-13%
<b>SOUTH DAKOTA TOTAL</b>	<b>3,855,501</b>	<b>4%</b>	<b>9,495,921</b>	<b>0%</b>
Andrew Johnson NHS	59,102	-6%	33,574	-5%
Big South Fork NR & RA <sup>4</sup>	513,529	-4%	3,548,489	-1%
Chickamauga & Chattanooga NMP	487,449	-6%	922,005	-3%
Fort Donelson NB	217,178	0%	149,560	3%
Great Smoky Mountains NP <sup>6</sup>	5,188,774	2%	39,379,542	0%
Natchez Trace Parkway	791,519	4%	3,194,404	4%
Obed Wild and Scenic River	216,699	-7%	1,011,339	-7%
Shiloh NMP	318,936	-3%	554,394	-3%
Stones River NB	255,888	-1%	313,250	3%
<b>TENNESSEE TOTAL</b>	<b>8,049,074</b>	<b>1%</b>	<b>49,106,557</b>	<b>0%</b>
Alibates Flint Quarries NM	3,276	18%	8,193	18%
Amistad NRA <sup>6</sup>	1,238,990	-13%	9,369,082	-13%
Big Bend NP	279,454	-5%	8,384,112	-9%
Big Thicket NPres <sup>6</sup>	111,626	-3%	476,747	-7%
Chamizal NMem	186,130	-16%	278,005	-15%
Fort Davis NHS	64,560	6%	116,508	6%
Guadalupe Mountains NP	223,485	7%	562,992	-13%
Lake Meredith NRA	1,676,466	14%	6,823,628	13%
Lyndon B. Johnson NHP <sup>6</sup>	136,892	-14%	399,536	-12%
Padre Island NS	840,236	11%	5,737,876	8%
Rio Grande Wild and Scenic River	498	1%	88,692	3%
San Antonio Missions NHP <sup>6</sup>	1,239,970	14%	1,595,682	2%

Table 9: Visits by State in 1996 (continued)

PARK	VISITS		HOURS	
	RECREATION	PERCENT <sup>1</sup> CHANGE	RECREATION	PERCENT <sup>1</sup> CHANGE
TEXAS TOTAL	6,001,583	3%	33,841,053	-4%
Arches NP <sup>4</sup>	856,016	0%	3,663,763	-1%
Bryce Canyon NP <sup>4</sup>	1,269,600	28%	9,674,502	14%
Canyonlands NP	447,527	0%	4,387,230	-3%
Capitol Reef NP	678,012	4%	1,207,235	1%
Cedar Breaks NM	543,760	1%	1,155,740	2%
Dinosaur NM	120,675	-7%	664,946	-3%
Glen Canyon NRA	2,304,604	0%	47,665,671	2%
Golden Spike NHS <sup>7</sup>	60,484	20%	147,706	8%
Hovenweep NM <sup>6</sup>	15,415	2%	21,187	-65%
Natural Bridges NM	136,368	-7%	754,504	-6%
Rainbow Bridge NM	325,562	-6%	488,346	-6%
Timpanogos Cave NM	97,250	22%	278,892	23%
Zion NP <sup>6, 7</sup>	2,498,001	3%	17,016,075	4%
UTAH TOTAL	9,353,274	4%	87,125,797	3%
Buck Island Reef NM	45,618	-21%	238,050	-21%
Christiansted NHS	111,891	-5%	59,140	-6%
Virgin Islands NP <sup>4</sup>	475,942	-11%	2,927,044	-11%
VIRGIN ISLANDS TOTAL	633,451	-11%	3,224,234	-12%
Appomattox Court House NHP	205,938	-8%	170,574	-8%
Arlington House, The Robert E. Lee Mem	409,143	-27%	204,580	-27%
Assateague Island NS	1,280,002	-1%	10,989,288	-1%
Blue Ridge Parkway	6,524,244	-1%	41,060,971	-1%
Booker T. Washington NM	20,134	-22%	30,228	-18%
Colonial NHP <sup>7</sup>	3,145,039	-5%	3,494,374	-6%
Fredericksburg & Spotsylvania CNTY BM NMP	477,991	3%	626,607	4%

Table 9: Visits by State in 1996 (continued)

PARK	VISITS		HOURS	
	RECREATION	PERCENT <sup>1</sup> CHANGE	RECREATION	PERCENT <sup>1</sup> CHANGE
George Washington Birthplace NM <sup>7</sup>	79,261	-49%	158,522	-49%
George Washington Memorial Pkwy <sup>4,7</sup>	6,126,490	-6%	10,304,906	-6%
Maggie L. Walker NHS	8,536	-9%	4,272	-9%
Manassas NBP	725,086	7%	543,817	7%
Petersburg NB	171,312	-15%	169,202	-16%
Prince William Forest Park	239,369	0%	2,140,024	-10%
Richmond NBP	77,807	-9%	195,405	-1%
Shenandoah NP <sup>4,7</sup>	1,571,019	-11%	10,174,076	-29%
Theodore Roosevelt Island <sup>4,7</sup>	131,890	48%	237,402	48%
Wolf Trap Farm Park for the Performing Arts	591,928	1%	2,367,712	1%
<b>VIRGINIA TOTAL</b>	<b>21,785,189</b>	<b>-5%</b>	<b>82,871,960</b>	<b>-5%</b>
Coulee Dam NRA <sup>7</sup>	1,045,455	-22%	4,635,915	-18%
Fort Vancouver NHS	352,769	1400%	449,357	20%
Klondike Gold Rush NHP	111,642	-8%	83,733	-8%
Lake Chelan NRA	36,891	-18%	470,503	-15%
Mount Rainier NP <sup>4,6</sup>	1,338,961	-7%	17,074,805	-5%
North Cascades NP	27,910	-58%	393,925	-35%
Olympic NP	3,348,723	-8%	19,576,234	-5%
Ross Lake NRA	313,565	-9%	1,909,349	-7%
San Juan Island NHP	227,104	10%	208,881	13%
Whitman Mission NHS	77,338	-2%	77,338	-2%
<b>WASHINGTON TOTAL</b>	<b>6,880,358</b>	<b>-10%</b>	<b>44,880,040</b>	<b>-7%</b>
Bluestone NSR	64,651	2%	161,629	2%
Chesapeake and Ohio Canal NHP <sup>7</sup>	54,270	-44%	376,894	-26%
Gauley River NRA	214,880	7%	896,675	5%
Harpers Ferry NHP <sup>7</sup>	314,548	-19%	1,258,192	-18%
New River Gorge NR	1,237,637	5%	2,758,916	7%
<b>WEST VIRGINIA TOTAL</b>	<b>1,885,986</b>	<b>-3%</b>	<b>5,452,306</b>	<b>7%</b>

Table 9: Visits by State in 1996 (continued)

PARK	VISITS		HOURS	
	RECREATION	PERCENT <sup>1</sup> CHANGE	RECREATION	PERCENT <sup>1</sup> CHANGE
Apostle Islands NL	188,614	0%	843,380	-3%
Saint Croix National Scenic Riverway	211,327	-8%	1,385,464	-7%
WISCONSIN TOTAL	379,941	-4%	2,228,844	-5%
Bighorn Canyon NRA	138,705	-21%	555,354	-21%
Devils Tower NM <sup>7</sup>	436,591	4%	1,308,895	-17%
Fort Laramie NHS	54,402	-8%	81,606	-8%
Fossil Butte NM	22,394	-15%	28,537	-34%
Grand Teton NP	2,733,439	0%	19,753,525	-1%
John D. Rockefeller, Jr., Mem Pkwy	1,471,029	-3%	2,845,987	3%
Yellowstone NP <sup>6,7</sup>	1,475,964	-4%	31,679,153	-4%
WYOMING TOTAL	6,332,524	-2%	56,253,057	-3%
TOTALS	265,796,163	-1%	1,251,434,549	-5%

Table 10: Overnight Stays by State in 1996

PARK	CONCESSIONER		NPS CAMPGROUNDS		NPS	OVERNIGHT STAYS		TOTAL
	LODGING	CAMPGROUNDS	TENTS	RV'S	BACKCOUNTRY	MISC.	NON RECR.	
Cape Krusenstern NM					177		235	412
Denali NP & Pres <sup>4</sup>	23,586		15,888	40,628	37,188	2,240		119,530
Gates of the Arctic NP & Pres <sup>4</sup>					3,776		330	4,106
Glacier Bay NP & Pres <sup>5</sup>	15,651		773		8,036	13,548	19,236	57,244
Kenai Fjords NP <sup>4</sup>			2,074		38	10		2,122
Klondike Gold Rush NHP <sup>3</sup>			1,106	542	3,967			5,615
Kobuk Valley NP					256			256
Lake Clark NP & Pres					3,119			3,119
Noatak NP					4,744			4,744
Wrangell-St. Elias NP & Pres <sup>4</sup>					23,571	832	2,405	26,808
Yukon-Charley Rivers NP <sup>4</sup>					4,269			4,269
ALASKA TOTAL	39,237	0	19,841	41,170	89,141	16,630	22,206	228,225
Canyon de Chelly NM <sup>4</sup>	40,416		25,260	29,973	1,841	3,596		101,086
Chiricahua NM			5,583	6,718		999		13,300
Glen Canyon NRA	183,755	130,350	9,572	5,109	19,630	1,427,838	111	1,776,365
Grand Canyon NP <sup>6,7</sup>	577,921	41,723	151,166	81,454	265,293	26,022		1,143,579
Navajo NM			4,925	2,701	601	1,179		9,406
Organ Pipe Cactus NM <sup>4</sup>			7,050	41,112	3,199	3,135		54,496
Petrified Forest NP <sup>8</sup>					545			545
Saguaro NP <sup>4</sup>					1,573			1,573
Wupatki NM					141			141
ARIZONA TOTAL	802,092	172,073	203,556	167,067	292,823	1,462,769	111	3,100,491
Arkansas Post NMem						1		1
Buffalo National River	6,373		70,960	25,291	21,598	14,475		138,697
Hot Springs NP			2,202	3,081				5,283
ARKANSAS TOTAL	6,373	0	73,162	28,372	21,598	14,476	0	143,981

Table 10: Overnight Stays by State in 1996 (continued)

PARK	CONCESSIONER		NPS CAMPGROUNDS		NPS BACKCOUNTRY	MISC.	OVERNIGHT STAYS	
	LODGING	CAMPGROUNDS	TENTS	RV'S			NON RECR	TOTAL
Channel Islands NP <sup>4</sup>					6,165	85,562	52,423	144,150
Death Valley NP	30,094	2,444	53,610	138,684		139		224,971
Devils Postpile NM			3,369	2,098				5,467
Golden Gate NRA <sup>4</sup>	42,387		2,948		744	13,638		59,717
Joshua Tree NP			144,729	50,265	6,930	53,398		255,322
Kings Canyon NP <sup>7</sup>	35,083		90,093	39,574	54,392	6,730		225,872
Lassen Volcanic NP	5,959		46,605	27,963	8,219	4,746		93,492
Lava Beds NM <sup>7</sup>			2,295	1,111		311		3,717
Pinnacles NM			4,085	726				4,811
Point Reyes NS	7,556	2,371			20,344			30,271
Redwood NP <sup>7</sup>	5,240		14,436	63,883	3,102	7,113		93,774
San Francisco Maritime NHP						11,047		11,047
Santa Monica Mountains NRA					144			144
Sequoia NP <sup>7</sup>	46,347		108,412	39,511	62,913	1,513		258,696
Whiskeytown-Shasta-Trinity NRA <sup>6</sup>		11,300		498	1,511	23,129		36,438
Yosemite NP <sup>6,7</sup>	1,030,368		592,413	302,072	107,182	63,279		2,095,314
CALIFORNIA TOTAL	1,203,034	16,115	1,062,995	666,385	271,646	270,605	52,423	3,543,203
Black Canyon of the Gunnison NM <sup>7</sup>			5,912	4,751	2,156			12,819
Colorado NM			11,238	7,768	262			19,268
Curecanti NRA			13,372	58,912	804	683		73,771
Dinosaur NM			24,235	12,462	28,937	4,456		70,090
Great Sand Dunes NM <sup>6</sup>			24,220	13,177	1,300	4,408		43,105
Mesa Verde NP <sup>7</sup>	50,522		50,788	20,522		9,709		131,541
Rocky Mountain NP <sup>4</sup>			105,456	65,292	42,394	18,836		231,978
COLORADO TOTAL	50,522	0	235,221	182,884	75,853	38,092	0	582,572

Table 10: Overnight Stays by State in 1996 (continued)

PARK	CONCESSIONER		NPS CAMPGROUNDS		NPS	MISC.	OVERNIGHT STAYS	
	LODGING	CAMPGROUNDS	TENTS	RV'S	BACKCOUNTRY		NON RECR	TOTAL
Chesapeake and Ohio Canal NHP <sup>7</sup>			3,942	1,530	3,430			8,902
DISTRICT OF COLUMBIA TOTAL	0	0	3,942	1,530	3,430	0	0	8,902
Big Cypress NPres			3,529	10,886	12,959			27,374
Canaveral NS					3,215			3,215
Dry Tortugas NP			44,448			31,782	11,440	87,670
Everglades NP <sup>4, 6, 7</sup>	39,284		15,633	30,629	15,679	2,616		103,841
Gulf Islands NS <sup>6</sup>			25,576	72,819	4,834	6,396	6,276	115,901
FLORIDA TOTAL	39,284	0	89,186	114,334	36,687	40,794	17,716	338,001
Chickamauga & Chattanooga NMP						1,946		1,946
Cumberland Island NS <sup>7</sup>			14,207		7,868			22,075
Fort Pulaski NM						246		246
Kennesaw Mountain NBP <sup>7</sup>						473		473
GEORGIA TOTAL	0	0	14,207	0	7,868	2,665	0	24,740
Haleakala NP			22,611		3,256	5,335		31,202
Hawaii Volcanoes NP <sup>6</sup>	31,485		5,483	259	5,025	71,230		113,482
HAWAII TOTAL	31,485	0	28,094	259	8,281	76,565	0	144,684
Craters of the Moon NM <sup>6</sup>			6,117	9,058	140	750		16,065
IDAHO TOTAL	0	0	6,117	9,058	140	750	0	16,065
Indiana Dunes NL <sup>7</sup>			13,157	3,720				16,877
INDIANA TOTAL	0	0	13,157	3,720	0	0	0	16,877
Cumberland Gap NHP <sup>6, 6</sup>			3,288	4,794	2,194	2,032		12,308
Mammoth Cave NP	26,148		37,728	21,328	3,550	6,730		95,484
KENTUCKY TOTAL	26,148	0	41,016	26,122	5,744	8,762	0	107,792
Acadia NP <sup>4</sup>			108,939	35,526		9,512		153,977
MAINE TOTAL	0	0	108,939	35,526	0	9,512	0	153,977



Table 10: Overnight Stays by State in 1996 (continued)

PARK	CONCESSIONER		NPS CAMPGROUNDS		NPS	MISC.	OVERNIGHT STAYS	
	LODGING	CAMPGROUNDS	TENTS	RV'S	BACKCOUNTRY		NON RECR	TOTAL
Antietam NB <sup>7</sup>						3,894		3,894
Assateague Island NS			42,340	12,906	2,095	8,388		65,729
Catoctin Mountain Park <sup>7</sup>			7,807	2,047	142	32,634		42,630
Greenbelt Park			8,136	9,146				17,282
MARYLAND TOTAL	0	0	58,283	24,099	2,237	44,916	0	129,535
Cape Cod NS	4,344					23,516		27,860
MASSACHUSETTS TOTAL	4,344	0	0	0	0	23,516	0	27,860
Isle Royale NP <sup>4</sup>	8,273	1,432	8,343		46,625	4,035	640	69,348
Pictured Rocks NL			11,536	3,195	11,647			26,378
Sleeping Bear Dunes NL			42,338	37,080	22,319			101,737
MICHIGAN TOTAL	8,273	1,432	62,217	40,275	80,591	4,035	640	197,463
Grand Portage NM					89			89
Saint Croix National Scenic Riverway					29,474			29,474
Voyageurs NP	700				18,493			19,193
MINNESOTA TOTAL	700	0	0	0	48,056	0	0	48,756
Natchez Trace Parkway			7,881	11,928				19,809
Vicksburg NMP <sup>7</sup>						266		266
MISSISSIPPI TOTAL	0	0	7,881	11,928	0	266	0	20,075
Ozark National Scenic Riverways	964		88,732	18,140	11,778	44,741		164,355
MISSOURI TOTAL	964	0	88,732	18,140	11,778	44,741	0	164,355
Bighorn Canyon NRA			3,481	7,786	1,088	295		12,650
Glacier NP	112,982		101,427	84,917	27,806			327,132
MONTANA TOTAL	112,982	0	104,908	92,703	28,894	295	0	339,782
Great Basin NP <sup>4</sup>			19,647	15,948	318			35,913
Lake Mead NRA	56,859	206,715	121,350	154,444	410,290	133,164	400,095	1,482,917
NEVADA TOTAL	56,859	206,715	140,997	170,392	410,608	133,164	400,095	1,518,830

Table 10: Overnight Stays by State in 1996 (continued)

PARK	CONCESSIONER		NPS CAMPGROUNDS		NPS BACKCOUNTRY	MISC.	OVERNIGHT STAYS	
	LODGING	CAMPGROUNDS	TENTS	RV'S			NON RECR	TOTAL
Delaware Water Gap NRA <sup>4,7</sup>		24,473			39,044	25,255		88,772
NEW JERSEY TOTAL	0	24,473	0	0	39,044	25,255	0	88,772
Bandelier NM <sup>7</sup>			8,099	5,254	904	2,039		16,296
Carlsbad Caverns NP					303			303
Chaco Culture NHP			18,266	5,292		264		23,822
El Malpais NM <sup>6</sup>					1,283			1,283
El Morro NM			1,333	474		52		1,859
Salinas Pueblo Missions NM						22		22
White Sands NM					2,334			2,334
NEW MEXICO TOTAL	0	0	27,698	11,020	4,824	2,377	0	45,919
Fire Island NS			6,450			45,033		51,483
Gateway NRA <sup>4</sup>						10,686		10,686
NEW YORK TOTAL	0	0	6,450	0	0	55,719	0	62,169
Blue Ridge Parkway	66,670	20,888	59,474	53,147	8,561	1,294		210,034
Cape Hatteras NS			54,735	34,986		2,868	3,660	96,249
Cape Lookout NS <sup>4,8</sup>	21,983				6,386	692		29,061
Moore's Creek NB <sup>7</sup>					38			38
NORTH CAROLINA TOTAL	88,653	20,888	114,209	88,133	14,985	4,854	3,660	335,382
Theodore Roosevelt NP			12,232	16,338	1,155	1,397		31,122
NORTH DAKOTA TOTAL	0	0	12,232	16,338	1,155	1,397	0	31,122
Cuyahoga Valley NRA <sup>4</sup>	2,552					2,914		5,466
Perry's Victory and International Peace Mem <sup>4</sup>						1,928		1,928
OHIO TOTAL	2,552	0	0	0	0	4,842	0	7,394
Chickasaw NRA <sup>6</sup>			38,400	14,958		22,805		76,163
OKLAHOMA TOTAL	0	0	38,400	14,958	0	22,805	0	76,163

Table 10: Overnight Stays by State in 1996 (continued)

PARK	CONCESSIONER		NPS CAMPGROUNDS		NPS BACKCOUNTRY	MISC.	OVERNIGHT STAYS	
	LODGING	CAMPGROUNDS	TENTS	RV'S			NON RECR	TOTAL
Crater Lake NP <sup>4,7</sup>	16,406	14,359	996		926			32,687
John Day Fossil Beds NM						565		565
Oregon Caves NM	5,559							5,559
OREGON TOTAL	21,965	14,359	996	0	926	565	0	38,811
Fort Necessity NB						178		178
Gettysburg NMP						22,193		22,193
Valley Forge NHP <sup>6</sup>						1,250		1,250
PENNSYLVANIA TOTAL	0	0	0	0	0	23,621	0	23,621
Congaree Swamp NM					195	522		717
Cowpens NB						41		41
Kings Mountain NMP					47			47
SOUTH CAROLINA TOTAL	0	0	0	0	242	563	0	805
Badlands NP	7,519		24,696	14,949	841			48,005
Wind Cave NP <sup>4</sup>			2,155	1,254	589			3,998
SOUTH DAKOTA TOTAL	7,519	0	26,851	16,203	1,430	0	0	52,003
Big South Fork NR & RA <sup>4</sup>	13,811		10,657	17,760	7,138	4,348		53,714
Fort Donelson NB						205		205
Great Smoky Mountains NP <sup>6</sup>	10,823		181,195	143,769	102,022	22,495		460,304
Obed Wild and Scenic River			4,538	286	2,784			7,608
TENNESSEE TOTAL	24,634	0	196,390	161,815	111,944	27,048	0	521,831
Amistad NRA <sup>6</sup>			4,849	19,361	2,098	736		27,044
Big Bend NP	47,565	11,261	45,644	36,265	32,373	36,503		209,611
Big Thicket NPres <sup>6</sup>					2,328			2,328
Guadalupe Mountains NP			10,720	6,329	3,220	1,405		21,674
Lake Meredith NRA			25,682	93,134	21,330	98,123		238,269

Table 10: Overnight Stays by State in 1996 (continued)

PARK	CONCESSIONER		NPS CAMPGROUNDS		NPS	MISC.	OVERNIGHT STAYS	
	LODGING	CAMPGROUNDS	TENTS	RV'S	BACKCOUNTRY		NON RECR	TOTAL
Padre Island NS			16,056	45,088	21,983	2,244		85,371
Rio Grande Wild and Scenic River					4,069			4,069
TEXAS TOTAL	47,565	11,261	102,951	200,177	87,401	139,011	0	588,366
Arches NP <sup>4</sup>			27,266	12,905	555	4,931		45,657
Bryce Canyon NP <sup>4</sup>	46,009		40,402	68,726	3,183	1,546		159,866
Canyonlands NP			19,212	9,003	70,963	6,614		105,792
Capitol Reef NP			17,963	21,711	2,678	1,918		44,270
Cedar Breaks NM			2,084	1,706				3,790
Natural Bridges NM			4,889	2,851				7,740
Zion NP <sup>6,7</sup>	67,096		121,650	61,884	18,384	14,205		283,219
UTAH TOTAL	113,105	0	233,466	178,786	95,763	29,214	0	650,334
Buck Island Reef NM						1,237		1,237
Virgin Islands NP <sup>4</sup>	11,613	12,434				137,055	13,705	174,807
VIRGIN ISLANDS TOTAL	11,613	12,434	0	0	0	138,292	13,705	176,044
Prince William Forest Park		16,886	6,707	1,029	164	26,919		51,705
Shenandoah NP <sup>4,7</sup>	109,525		72,333	43,770	46,727			272,355
VIRGINIA TOTAL	109,525	16,886	79,040	44,799	46,891	26,919	0	324,060
Coulee Dam NRA <sup>7</sup>	10,811		44,329	63,804	4,866	21,816		145,626
Lake Chelan NRA	8,945				5,959	1,444		16,348
Mount Rainier NP <sup>4,8</sup>	39,672		70,709	32,270	40,336	2,952		185,939
North Cascades NP					16,797	121		16,918
Olympic NP	67,144	9,227	106,085	108,267	151,113	2,502		444,338
Ross Lake NRA	4,874		26,103	17,668	15,990	1,858		66,493
WASHINGTON TOTAL	131,446	9,227	247,226	222,009	235,061	30,693	0	875,662

Table 10: Overnight Stays by State in 1996 (continued)

PARK	CONCESSIONER		NPS CAMPGROUNDS		NPS		OVERNIGHT STAYS	
	LODGING	CAMPGROUNDS	TENTS	RV'S	BACKCOUNTRY	MISC.	NON RECR	TOTAL
Gauley River NRA			1,306	1,708				3,014
New River Gorge NR			10,236	5,678				15,914
WEST VIRGINIA TOTAL	0	0	11,542	7,386	0	0	0	18,928
Apostle Islands NL					13,120	16,567		29,687
WISCONSIN TOTAL	0	0	0	0	13,120	16,567	0	29,687
Devils Tower NM <sup>7</sup>			9,368	6,951				16,319
Grand Teton NP	231,115		140,174	121,552	28,750	19,318		540,909
John D. Rockefeller, Jr., Mem Pkwy	31,816	31,057			2,113	2,085		67,071
Yellowstone NP <sup>6,7</sup>	550,768	463,553	70,866	47,613	45,769	9,151		1,187,720
WYOMING TOTAL	813,699	494,610	220,408	176,116	76,632	30,554	0	1,812,019
TOTALS	3,754,573	1,000,473	3,680,310	2,771,704	2,124,793	2,772,849	510,556	16,615,258

## FOOTNOTES

1. The following areas are redesignated:  
  
None.
2. The following areas are either reporting for the first time or reporting separately:  
  
Dayton Aviation NHP, Kalaupapa NHP, and Korean War Veterans MEM.
3. Data for the following areas are combined as Klondike Gold Rush NHP; breakdown is available:  
  
Klondike Gold Rush NHP - Alaska and Klondike Gold Rush NHP - Washington.  
  
The following areas are combined as National Capital Parks; breakdown is available:  
  
Constitution Gardens, National Capital Parks - East, National Capital Parks - Central, and President's Park.
4. Data for the following areas require special adjustments to be comparable with earlier data due to changes in counting procedures:  
  
Acadia NP, Arches NP, Big South Fork NR & RA, Boston NHP, Bryce Canyon NP, Canyon de Chelly NM, Cape Lookout NS, Channel Islands NP, Crater Lake NP, Cuyahoga Valley NRA, Delaware Water Gap NRA, Denali NP & Pres, Effigy Mounds NM, Everglades NP, Gates of the Arctic NP & Pres, Gateway NRA, George Washington Memorial Pkwy, Golden Gate NRA, Great Basin NP, Guilford Courthouse NMP, Homestead National Monument of America, Isle Royale NP, Kenai Fjords NP, Mount Rainier NP, Mount Rushmore NMem, National Capital Parks, Organ Pipe Cactus NM, Perry's Victory and International Peace Mem, Pipe Spring NM, Pu'uhonua o Honaunau NHP, Rocky Mountain NP, Saguaro NP, Shenandoah NP, Sunset Crater Volcano NM, Theodore Roosevelt Inaugural NHS, Theodore Roosevelt Island, Tuskegee Institute NHS, Tuzigoot NM, Virgin Islands NP, Washington Monument, Wind Cave NP, Wrangell-St. Elias NP & Pres, and Yukon-Charley Rivers NPres.
5. Data for the following areas require special adjustments to be comparable with earlier data due to the opening of additional areas, programs, or facilities:  
  
Cape Lookout NS, Cumberland Gap NHP, Everglades NP, Glacier Bay NP & Pres, Guilford Courthouse NMP, Hawaii Volcanoes NP, Independence NHP, and San Antonio Missions NHP.
6. Data for the following areas require special adjustments to be comparable with earlier data due to partial or temporary closing:  
  
Amistad NRA, Big Thicket NPres, Chickasaw NRA, City of Rocks NRes, Craters of the Moon NM, Cumberland Gap NHP, El Malpais NM, Fort Smith NHS, Grand Canyon NP, Great Sand Dunes NM, Great Smoky Mountains NP, Gulf Islands NS, Hamilton Grange NMem, Hovenweep NM, Lincoln Memorial, Lyndon B. Johnson NHP, Mount Rainier NP, Petrified Forest NP, Valley Forge NHP, Washington Monument, Whiskeytown-Shasta-Trinity NRA, Yellowstone, Yosemite NP, and Zion NP.

7. Data for the following areas require special adjustments to be comparable with earlier data due to special events (anniversaries, civic fairs, significant natural disasters, storm damage, etc.):

Andersonville NHS, Antietam NB, Bandelier NM, Biscayne NP, Black Canyon of the Gunnison NM, Boston NHP, Carl Sandburg Home NHS, Catocin Mountain Park, Chesapeake and Ohio Canal NHP, Colonial NHP, Coulee Dam NRA, Crater Lake NP, Cumberland Island NHP, Delaware Water Gap NRA, Devils Tower NM, Everglades NP, Federal Hall NMem, Fort Smith NHS, George Washington Birthplace NM, George Washington Memorial Pkwy, Golden Spike NHS, Grand Canyon NP, Harpers Ferry NHP, Indiana Dunes NL, Jefferson National Expansion Memorial, Jimmy Carter NHS, Kennesaw Mountain NBP, Kings Canyon NP, Lava Beds NM, Martin Luther King, Jr., NHS, Mesa Verde NP, Moores Creek NB, National Capital Parks, Ocmulgee NM, Redwood NP, San Juan NHS, Sequoia NP, Shenandoah NP, Theodore Roosevelt Island, Vicksburg NMP, Yellowstone NP, Yosemite NP, and Zion NP.

8. The following areas are new areas but are not reporting:

Boston Harbor Islands NRA, Franklin Delano Roosevelt NM (Created in 1959), New Bedford Whaling NHP, Nicodemus NHS, Tallgrass Prairie NP, and Washita Battlefield NHS.

9. Data for the following areas are suspended pending completion of studies to verify the validity of the data:

None.

10. The following areas have stopped reporting:

None.

## DEFINITIONS

**AFFILIATED AREAS:** Areas administrated in connection with the NPS which use NPS assistance but are neither federally owned nor directly administered by the NPS.

**BACKCOUNTRY:** One or more primitive or wilderness areas in a park reached primarily by hiking, boating, or horseback.

**CAMPGROUND:** An area of land designated and developed for use as a camp.

**CATEGORY:** NPS areas are categorized by their proximity to population centers in the following manner:

Mixed Area Park - A park located in a mixture of Outlying Area, Rural Area, Suburban Area, or Urban Area.

Outlying Area Park - A park located in a Metropolitan Statistical Area (MSA) of less than one million population.

Remote Area Park - A park located outside of any MSA and requiring special travel arrangements to reach.

Rural Area Park - A park located outside of any MSA and accessible by paved highway, scheduled air or marine transportation service.

Suburban Area Park - A park located outside the central city but still within a MSA of greater than one million population.

Urban Area Park - A park located within the central city of a MSA.

**CLASSIFICATION:** Designated names for areas administered by the NPS may be found in the publication, The National Parks: Index 1995.

**CONCESSIONER:** Private company or individual granted the privilege of providing facilities and services considered necessary by the NPS for accommodating visitors.

**CONCESSIONER CAMPGROUND:** An element of a concessioner operation involving services for overnight camping or equipment for camping.

**CONCESSIONER LODGING:** An element of a concessioner operation involving facilities for overnight lodging such as hotels, motels, cabins, cottages, trailer villages, and trailer rental.

**FIELD AREAS:** A NPS administrative subdivision. The seven NPS field offices include the following states:

Alaska - Alaska

Intermountain - Arizona, Colorado, Montana, New Mexico, Texas, Utah, Wyoming

Midwest - Arkansas, Illinois, Indiana, Iowa, Kansas, Michigan, Minnesota, Missouri, Nebraska, North Dakota, Ohio, Oklahoma, South Dakota, Wisconsin



National Capital - Washington, DC, Maryland, Virginia, West Virginia

Northeast - Connecticut, Delaware, Massachusetts, Maine, New Hampshire, New Jersey, New York, Pennsylvania, Rhode Island, Vermont, Virginia

Pacific West - California, Guam, Hawaii, Idaho, Nevada, Oregon, Washington

Southeast - Alabama, Florida, Georgia, Kentucky, Louisiana, Mississippi, North Carolina, Puerto Rico, South Carolina, Tennessee, Virgin Islands

**MISCELLANEOUS OVERNIGHT STAY:** Any overnight stay not otherwise defined (sleep aboard boats, camping in organized groups, and/or any other overnight stays not included in other categories of overnight stays, except in-holders which are nonreportable).

**MIXED AREA PARK:** See Category.

**NATIONAL PARK SERVICE:** A Department of Interior (DOI) agency which administers approximately two dozen types of federal land, nationally significant for their scenic, natural, scientific, historical, or archeological interest (see CLASSIFICATION). The agency was established as a Bureau of the DOI by Act of Congress, August 25, 1916. The NPS does not administer National Forests (United States Department of Agriculture/Forest Service), Wildlife Refuges (United States Department of Interior/Fish and Wildlife Service), or a variety of other lands available for public use.

**NEGLECTIBLE TRANSIT:** A brief, incidental entry into a park by passing traffic (vehicular or pedestrian) using NPS administered grounds, roads, or walkways (See NONREPORTABLE VISITS).

**NONRECREATION OVERNIGHT STAYS:** Reportable nonrecreation overnight stays include lease holders, line shacks for ranchers, and government personnel (other than NPS employees).

**NONRECREATION VISITS:** Reportable nonrecreation visits include through traffic, persons going to and from in-holdings, trades-people with business in the park, and government personnel (other than NPS employees) with business in the park.

**NONREPORTABLE VISITS:** The entry into the park by NPS employees, their families, concessioner employees, members of cooperating associations, NPS contractors, and service personnel.

**NOT REPORTING:** These areas do not report recreation visits to the NPS.

**OUTLYING AREA PARK:** See Category.

**OVERNIGHT STAY:** One night within a park by a visitor.

**RECREATION VEHICLE:** Any enclosed vehicle used for camping which is more elaborate than a simple truck or car, such as pickup truck with camper body, pop-up tent trailer, travel trailer, bus, motor coach, mobile home, etc.

**RECREATION VISITS:** Entries of persons onto lands or waters administered by the NPS for recreational purposes excluding government personnel, through traffic (commuters), trades-people, and persons residing within park boundaries.

**REMOTE AREA PARK:** See Category.

**RURAL AREA PARK:** See Category.

**SERVICE PERSONNEL.** Nonreportable visits include visits by employees of the NPS who are assigned to the park or are visiting the park in connection with their duty assignments, NPS contractors, concessionaires, cooperating associations, and the temporary or permanent members in the households of NPS employees resident in the park.

**SUBURBAN AREA PARK:** See Category.

**URBAN AREA PARK:** See Category.

**VISIT:** The entry of any person, except NPS personnel, onto lands or waters administered by the NPS. Visits may occur as recreation visits or nonrecreation visits. Same day reentries, negligible transits, and entries to detached portions of the same park on the same day are considered as a single visit. Such adjustments are made insofar as practicable for noncontiguous parts of the same park. However, visits are reported separately for two contiguous parks.

**VISITOR DAY:** Twelve visitor hours in a park.

**VISITOR HOUR:** The presence of one or more persons, excluding NPS personnel, in a park for continuous, intermittent, or simultaneous periods of time aggregating one hour (e.g., one person for one hour, two persons for one-half hour).

## ABBREVIATIONS

<b>B</b>	<b>Baines</b>
<b>BM</b>	<b>Battlefield Memorial</b>
<b>CNTY</b>	<b>County</b>
<b>HS</b>	<b>Historic Shrine, Historic Site</b>
<b>MEM</b>	<b>Memorial</b>
<b>MISC</b>	<b>Miscellaneous</b>
<b>NB</b>	<b>National Battlefield</b>
<b>NBP</b>	<b>National Battlefield Park</b>
<b>NBS</b>	<b>National Battlefield Site</b>
<b>NHC</b>	<b>National Heritage Corridor</b>
<b>NHP</b>	<b>National Historical Park</b>
<b>NHR</b>	<b>National Historical Reserve</b>
<b>NHS</b>	<b>National Historic Site</b>
<b>NL</b>	<b>National Lakeshore</b>
<b>NM</b>	<b>National Monument</b>
<b>NMEM</b>	<b>National Memorial</b>
<b>NMP</b>	<b>National Military Park</b>
<b>NP</b>	<b>National Park</b>
<b>NPRES</b>	<b>National Preserve</b>
<b>NPS</b>	<b>National Park Service</b>
<b>NR</b>	<b>National River</b>
<b>NRA</b>	<b>National Recreation Area</b>
<b>NRES</b>	<b>National Reserve</b>
<b>NS</b>	<b>National Seashore</b>
<b>NSR</b>	<b>National Scenic River</b>
<b>NST</b>	<b>National Scenic Trail</b>
<b>ONS</b>	<b>Overnight Stays</b>
<b>PKWY</b>	<b>Parkway</b>
<b>PRES</b>	<b>Preserve</b>
<b>RA</b>	<b>Recreation Area</b>
<b>RECR</b>	<b>Recreation</b>
<b>RV'S</b>	<b>Recreational Vehicle</b>
<b>VS</b>	<b>Versus</b>