



NPS

2022 Weather in Review: Booker T. Washington National Monument

In all, 2022 was warmer and wetter than average. It was the 36th warmest and 18th wettest year recorded in Franklin County, VA since 1895. Data indicate that over the long term, annual average temperature and annual total precipitation have both increased in the county (+0.1 °F per decade and +0.33 inches per decade, respectively).

This brief provides county-scale weather data for Franklin County, VA, including data from 1895–2022 (i.e., period of record). Data and analyses herein are courtesy of the National Oceanic and Atmospheric Administration's (NOAA) Climate at a Glance Program.

Temperature

In total, 2022 was the 36th warmest year at the park since 1895 with three seasons being warmer than normal (Figure 1). Eight months had higher than normal temperatures with February, March, and November all being at least 2.5 °F above long-term averages (Table 1).

Table 1. Average monthly, average annual, and departures from long-term average temperatures. Departures from average are based on a comparison of 2022 average temperatures to relevant averages from 1895–2021. Data are available at <https://www.ncdc.noaa.gov/cag/county/time-series>.

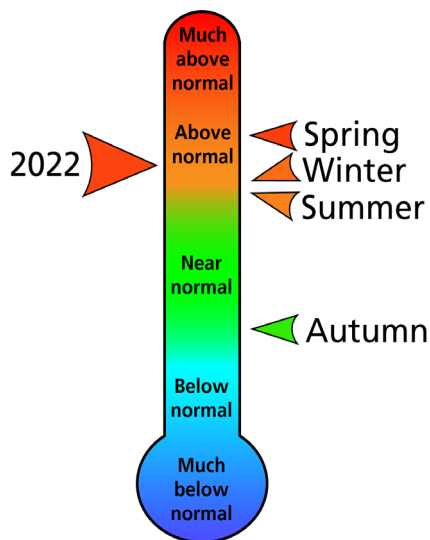


Figure 1. Seasonal and annual temperature rankings. An arrow at the top of the figure would represent the warmest year/season on record (since 1895); at the bottom, the coldest year/season on record. Winter = Jan–Mar, Spring = Apr–June, Summer = July–Sept, Autumn = Oct–Dec. Data are available at <https://www.ncdc.noaa.gov/cag/county/rankings>.

Month/ Year	Average temperature (°F)	Departure from average (°F)
January	33.2	–2.4
February	40.7	+3.1
March	49.5	+3.8
April	55.8	+0.7
May	64.9	+1.0
June	72.9	+1.6
July	76.9	+2.0
August	74.3	+0.7
September	67.0	–0.4
October	53.2	–3.3
November	48.6	+2.6
December	36.7	–1.1
2022	56.1	+0.7

Precipitation

It was a wet year for the park with three seasons being wetter than normal (Figure 2). Over the year, 50.8 inches of precipitation fell, almost 7 inches more than the long-term average (Table 2). In all, it was the 18th wettest year on record.

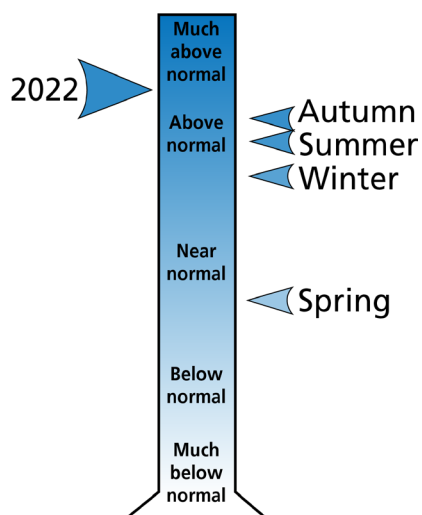


Figure 2. Seasonal and annual precipitation rankings. An arrow at the top of the figure would represent the wettest year/season on record (since 1895); at the bottom, the driest year/season on record. Winter = Jan–Mar, Spring = Apr–June, Summer = July–Sept, Autumn = Oct–Dec. Data are available at <https://www.ncdc.noaa.gov/cag/county/rankings>.

Table 2. Monthly and annual total precipitation and departure from long-term averages. Departures from average are based on a comparison of 2022 precipitation to relevant averages from 1895–2021. Data are available at <https://www.ncdc.noaa.gov/cag/county/time-series>.

Month/Year	Total precipitation (in.)	Departure from average (in.)
January	4.26	+0.98
February	3.56	+0.48
March	3.78	+0.02
April	3.27	–0.21
May	6.76	+2.72
June	1.13	–2.94
July	5.88	+1.52
August	5.68	+1.58
September	3.46	–0.46
October	3.61	+0.01
November	5.43	+2.46
December	3.96	+0.65
2022	50.78	+6.82

Temperature and Precipitation (1895–2022)

Data for Franklin County, VA indicate that annual average temperature has increased approximately +0.1 °F per decade and annual total precipitation has increased approximately +0.33 inches per decade since 1895 (Figure 3).

National Park Service scientists have forecast future changes in climate too. Models estimate that by 2100, annual average temperature at the park will increase by 2.9–8.5 °F (from a best-case to worst-case scenario, respectively). Annual total precipitation is expected to increase by 8–14% (see [Gonzalez et al., 2018](#) for details).

Data in this brief are preliminary and were retrieved from NOAA on 01/10/22.

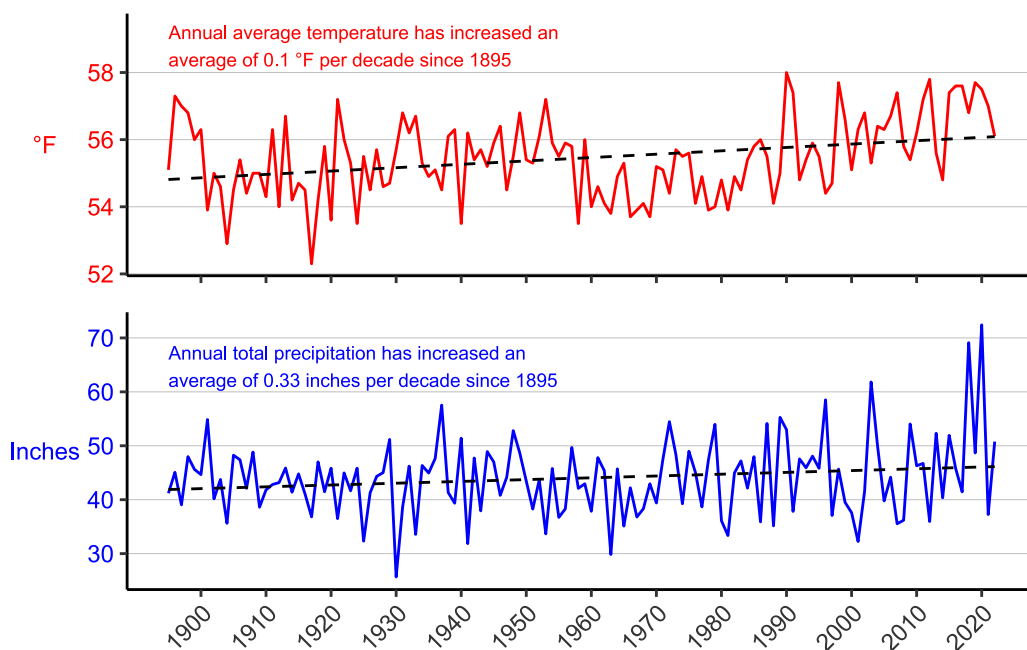


Figure 3. Annual average temperature (°F) and annual total precipitation (in.) from 1895–2022 for Franklin County, VA. Dashed lines represent linear estimates of change. Data are available at <https://www.ncdc.noaa.gov/cag/county/time-series>.

Network Contact

Jeb Wofford
Jeb_Wofford@nps.gov
Biologist / Science Writer

Mid-Atlantic Network

120 Chatham Lane
Fredericksburg, VA 22405
www.nps.gov/im/midn

Parks monitored: Appomattox Court House NHP • Booker T. Washington NM • Eisenhower NHS • Fredericksburg & Spotsylvania NMP • Gettysburg NMP • Hopewell Furnace NHS • Petersburg NB • Richmond NBP • Shenandoah NP • Valley Forge NHP