



Statistical Abstract

2024



Collapse in Indian Tunnel, Craters of the Moon National Monument and Preserve.
NPS / JACOB W. FRANK

Statistical abstract: 2024

Science Report NPS/SR—2025/271

Pamela S. Ziesler ¹, James F. Horn²

¹ National Park Service
Natural Resource Stewardship and Science Directorate
Socioeconomics and Resource Recovery Division
1201 Oakridge Drive
Fort Collins, CO 80525

² National Park Service
FOMC/HAMP/STSP and Socioeconomics and Resource Recovery Division
2400 East Fort Avenue
Baltimore, MD 21230

Please cite this publication as:

Ziesler, P. S., and J. F. Horn. 2025. Statistical abstract: 2024. Science Report NPS/SR—2025/271. National Park Service, Fort Collins, Colorado. <https://doi.org/10.36967/2310175>

The National Park Service Science Report Series disseminates information, analysis, and results of scientific studies and related topics concerning resources and lands managed by the National Park Service. The series supports the advancement of science, informed decisions, and the achievement of the National Park Service mission.

All manuscripts in the series receive the appropriate level of peer review to ensure that the information is scientifically credible and technically accurate.

Views, statements, findings, conclusions, recommendations, and data in this report do not necessarily reflect views and policies of the National Park Service, US Department of the Interior. Mention of trade names or commercial products does not constitute endorsement or recommendation for use by the US Government.

The Department of the Interior protects and manages the nation's natural resources and cultural heritage; provides scientific and other information about those resources; and honors its special responsibilities to American Indians, Alaska Natives, and affiliated Island Communities.

This report is available in digital format from the [National Park Service DataStore](#) and the [Natural Resource Publications Management website](#). If you have difficulty accessing information in this publication, particularly if using assistive technology, please email irma@nps.gov.

Contents

	Page
Figures.....	iv
Tables.....	v
Abstract.....	vi
List of Acronyms	vii
Definitions.....	ix
Acknowledgments.....	xiv
Introduction.....	1
2024 Visitor Use Data.....	3
Recreation Visits by Site Designation.....	3
Recreation Visits by State	6
Recreation Visits / Visitor Days by Population Center.....	9
Recreation Visits / Visitor Days and Non-Recreation Visits / Visitor Days by Park.....	10
Average Recreation Visits per Day to NPS Units	27
Overnight Stays	28
Related and Non-Reporting Areas.....	36
National Park System Areas Not Reporting Visitor Use.....	36
Recreation Visits / Visitor Days by State and U.S. Territory.....	38
Endnotes.....	60
Appendix A.....	70

Figures

	Page
Figure 1. Percentage of Recreation Visits by Site Designation, 2024.	4
Figure 2. Recreation Visits by Site Designation, 2023 to 2024.	5
Figure 3. Percent Change of Recreation Visits by State or Territory, 2023 to 2024.	8
Figure 4. Recreation Visits by Population Center, 2023 to 2024.....	9
Figure 5. Service-wide Average Number of Recreation Visits per Day by Month, 2023 to 2024.....	27
Figure 6. Recreation Overnight Stays by Category and Year, 2000–2024.	35
Figure 7. Parks Setting an Annual Recreation Visit Record in 2024.....	70

Tables

	Page
Table 1. 2024 Recreation Visits by Site Designation.....	3
Table 2. 2024 Recreation Visits by State and U.S. Territory Compared to 2023.	6
Table 3. 2024 Recreation Visits / Visitor Days and Change from 2023 by Population Center.	9
Table 4. 2024 Recreation Visits / Visitor Days and Non-Recreation Visits / Visitor Days and Percent Change from 2023 by Park.....	10
Table 5. 2024 Overnight Stays by Park.....	28
Table 6. 2024 Recreation Visits / Visitor Days and Percent Change from 2023 by State and U.S. Territory.	38
Table 7. Parks Setting an Annual Recreation Visit Record in 2024.	71

Abstract

In the pages that follow, a series of tables and figures displays visitor use statistics for calendar year 2024. By documenting visits, hours, and overnight stays across the National Park System, the National Park Service (NPS) Statistical Abstract offers a historical record of visitor use in parks and provides NPS staff and partners with a useful tool for effective management and planning. In 2024, 404 of the 433 National Park System units collected and reported visitor use statistics; the remainder were unable to do so for a variety of reasons such as administration by another agency, non-federal land ownership, or new parks that lack staff and facilities for the management of visitor use statistics.

The responsibility for compiling and summarizing visitor use statistics resides with the Socioeconomics and Resource Recovery Division in the Natural Resource Stewardship and Science Directorate. The Division relies on the conscientious efforts of NPS field personnel to count, record, and report visitor use. This system of collecting and summarizing monthly visitor use data is combined with continuous review and assessment of park visitor use estimation procedures to promote consistency and accuracy of data. Detailed instructions for the units that collect data, monthly visitation summaries, and reports displaying trends in park visitation are available on the NPS Visitor Use Statistics website.

List of Acronyms

EHP:	Ecological and Historic Preserve
EPRES:	Ecological Preserve
HS:	Historic Shrine, Historic Site
IHS:	International Historic Site
INTL / Int'l:	International
LBJ:	Lyndon Baines Johnson
MEM:	Memorial
MISC:	Miscellaneous
Nat'l:	National
NB:	National Battlefield
NBP:	National Battlefield Park
NBS:	National Battlefield Site
NHP:	National Historical Park
NHR:	National Historic Reserve
NHS:	National Historic Site
NL:	National Lakeshore
NM:	National Monument
NMEM:	National Memorial
NMP:	National Military Park
NON-REC:	Non-Recreation
NP:	National Park
NPRES:	National Preserve
NPS:	National Park Service

NR:	National River
NRA:	National Recreation Area
NRES:	National Reserve
NRR:	National Recreational River
NS:	National Seashore
NSR:	National Scenic River
NS & RR:	National Scenic and Recreational River
NST:	National Scenic Trail
PKWY:	Parkway
PRES:	Preserve
RA:	Recreation Area
R.E.:	Robert Edward
REC:	Recreation
RV:	Recreational Vehicle
S&RR:	Scenic and Recreational River
W&SR:	Wild and Scenic River
W.J.:	William Jefferson

Definitions

AFFILIATED AREA: An area administered in connection with the National Park Service (NPS) which uses NPS assistance but is neither federally owned nor directly administered by the NPS.

BACKCOUNTRY: One or more primitive or wilderness areas that are reached primarily by hiking, boating, or horseback. This does not include developed campgrounds that happen to be located on an island (e.g., developed frontcountry campgrounds at Isle Royale NP).

CAMPGROUND: An area of land designated and developed for use as a camp.

CLASSIFICATION: Designated names for areas administered by the NPS may be found in the publication, *The National Parks: Index 2012–2016*, or online at [National Park System \(U.S. National Park Service\) \(nps.gov\)](http://www.nps.gov).

CONCESSIONER: A private company or individual granted the privilege of providing facilities and services considered necessary by the NPS for accommodating visitors.

CONCESSIONER OPERATED CAMPGROUND: An element of a concessioner operation involving services for overnight camping such as RV parks, tent campgrounds, and trailer courts where trailers are not provided by the concessioner.

CONCESSIONER OPERATED LODGING: An element of a concessioner operation involving facilities for overnight lodging such as hotels, motels, cabins, cottages, trailer villages, and trailer courts where trailers are available for rent by visitors.

MISCELLANEOUS OVERNIGHT STAY: Any overnight stay not otherwise defined such as sleeping aboard boats, camping in organized group campsites, staying overnight in NPS furnished cabins, or any overnight stays not included in other categories. This excludes overnight stays on private inholdings, which are not stays on NPS administered territory.

MIXED AREA PARK: See **POPULATION CENTERS**.

NATIONAL PARK SERVICE (NPS): A Department of the Interior (DOI) bureau which administers approximately two dozen types of federal lands and waters, nationally significant for their scenic, natural, scientific, historical, or archaeological interest (see **CLASSIFICATION**). The NPS was established as a bureau of the DOI by an Act of Congress on August 25, 1916. The NPS does not administer National Forests (United States Department of Agriculture / Forest Service), Wildlife Refuges (United States Department of the Interior / Fish and Wildlife Service), or a variety of other public lands available for visitor use.

NATIONAL PARK SYSTEM: The collection of properties managed by the National Park Service. The General Authorities Act of 1970 defines the System thus: “The ‘national park system’ shall include any area of land and water now or hereafter administered by the Secretary of the Interior

through the National Park Service for park, monument, historic, parkway, recreational, or other purposes.”

NEGLIGIBLE TRANSIT: A brief, incidental entry into a park by passing traffic (vehicular or pedestrian) using NPS-administered grounds, roads, or walkways (see NON-REPORTABLE VISIT).

NON-RECREATION OVERNIGHT STAY: A reportable non-recreation overnight stay is any overnight on NPS-administered territory associated with a non-recreation visit and includes leaseholder overnights, line shack overnights for ranchers, overnights for government personnel other than NPS employees, nights on board commercial fishing vessels in NPS-administered waters, researchers on non-NPS business who stay overnight, and other related overnight stays.

NON-RECREATION VISIT: A reportable non-recreation visit includes:

- Persons going to and from inholdings across significant portions of NPS-administered land or water.
- Commuter and other through traffic using NPS-administered roads or waterways through a park for their convenience.
- Tradespeople with business in the park.
- Any civilian activity as a part of or incidental to the pursuit of gainful occupation (e.g., guides).
- Government personnel other than NPS employees with business in the park.
- Citizens using NPS buildings for civic or local government business, or attending public hearings not related to NPS activities.
- Outside research activities—visits and overnights—if independent of NPS legislated interests (e.g., meteorological research).

NON-REPORTABLE VISIT: The entry into a park by NPS employees, their families, concessioner employees, members of cooperating associations, NPS contractors, and service personnel are not reportable as visitor use. Specific situations include:

- Employees of the NPS who are assigned to the park or who are visiting the park in connection with their duty assignment.
- NPS contractor, concessioner, and cooperating association employees.
- Temporary or permanent members in households of personnel otherwise included in this definition whose residence is in the park.
- Private tenants within NPS boundaries (inholders) if not crossing significant NPS territory for access.
- Persons engaged in pursuit of specific legal rights of use (e.g., subsistence hunting and fishing).

- Any other persons whose presence in the park is to help the Service fulfill its mission (e.g., volunteers in parks, research activities associated with the NPS mission).

In addition, brief, incidental entries into a park by passing traffic (vehicular or pedestrian) using NPS-administered grounds, roads, water, or walkways are considered non-reportable. Civil ceremonies (e.g., ritualistic observances, marriages) are non-reportable unless there is a traditional, legislative, or other official and externally imposed requirement bearing on the park, or unless there is a compensatory contract with the activity sponsor as with an authorized special use permit.

NOT REPORTING: These areas do not report official visitation to the NPS.

OUTLYING AREA PARK: See **POPULATION CENTERS**.

OVERNIGHT STAY: One night within a park by a visitor. Overnights by concessioner employees, inholders, NPS employees, and their families are non-reportable. A party of two visitors staying in a park for three nights yields six overnight stays. There are seven categories of overnight stays:

- Persons staying overnight in concessioner operated lodges, cabins, motels, and hotels are reported as Concessioner Operated Lodging Overnight Stays.
- Persons staying overnight in concessioner operated campgrounds, RV parks, and trailer courts (trailers not provided by the concessioner) are reported as Concessioner Operated Campground Overnight Stays.
- Camper overnights in soft-sided tents, sleeping bags, or tents attached to a vehicle in NPS operated campsites are reported as NPS Campground Tent Overnight Stays.
- Camper overnights in recreational vehicles at NPS operated campsites are reported as NPS Campground RV Overnight Stays (see definition of Recreational Vehicle).
- Camper overnights in sleeping bags or soft-sided tents erected at undeveloped walk-in campsites not accessible by road are reported as Backcountry Overnight Stays. This does not include camping areas having walk-in sites with nearby parking, nor does it include developed campgrounds that happen to be located on an island.
- Camper overnights in group camping areas, on board transport or boats, at trailside shelters, in undeveloped overflow areas, in cabins or other structures managed by the NPS (not concessioner operated), or in other areas not otherwise described here are reported as Miscellaneous Overnight Stays.
- Non-Recreation Overnight Stays are any overnight associated with non-recreation visits (e.g., nights on board commercial fishing vessels within NPS-administered waters or researchers on non-NPS business who stay overnight). All non-recreation overnight stays should be captured in this category regardless of whether they occurred in concessioner operated lodging, campgrounds, backcountry, etc. Overnight stays on private inholdings are not reportable.

POPULATION CENTERS: NPS parks are categorized by their proximity to population centers in the following manner:

- Mixed Area Park—a park located in a mixture of Outlying Area, Rural Area, Suburban Area, and/or Urban Area with 75% or less of the park area in any one category.
- Outlying Area Park—more than 75% of the park is located within a 2020 Metropolitan Statistical Area (MSA) with a population of less than one million people and outside of an Urbanized Area (Urbanized Area as defined by the U.S. Census Bureau).
- Remote Area Park—more than 75% of the park is located outside of any 2020 MSA and requires special travel arrangements to reach.
- Rural Area Park—more than 75% of the park is located outside of any 2020 MSA and is accessible by paved highway, scheduled air, or marine transport services.
- Suburban Area Park—more than 75% of the park is located within a 2020 MSA with a population greater than one million people but outside of an Urbanized Area (Urbanized Area as defined by the U.S. Census Bureau).
- Urban Area Park—more than 75% of the park is located within a 2020 Urbanized Area as defined by the U.S. Census Bureau.

RECREATIONAL VEHICLE: Any enclosed vehicle used for camping which is more elaborate than a simple truck or car, such as a pickup truck with a camper body, pop-up trailer, travel trailer, bus, motor coach, mobile home, etc.

RECREATION VISIT: The entry of a person onto lands or waters administered by the NPS except as defined above for non-reportable and non-recreation visits. Funeral parties at National Cemeteries, school groups, etc. are reportable as recreation use because their use meets the purpose for which the park was established. Visits originating on surface vehicles (trains, boats, other) and aircraft may be counted *if* they stop and disembark passengers on NPS administered territory. **The applicable rule is that one entrance per individual per day is countable.**

RELATED AREAS: Related areas are linked in importance and purpose to places managed directly by the National Park Service by preserving important segments of the nation's natural and cultural heritage. They are designated by acts of Congress or by the Secretary of the Interior. Most related areas are not units of the National Park System and are managed by other government agencies or non-governmental organizations and landowners. The National Park Service is involved in related areas by directly managing the entirety or sections of a related area, or by providing technical or financial assistance.

REMOTE AREA PARK: See **POPULATION CENTERS.**

RURAL AREA PARK: See **POPULATION CENTERS.**

SERVICE PERSONNEL: Employees of the NPS who are assigned to a park or are visiting a park in connection with their duty assignments, NPS contractors, concessioner employees, cooperating association employees, and the temporary or permanent members in the households of NPS employees who reside in the park.

SUBURBAN AREA PARK: See **POPULATION CENTERS**.

URBAN AREA PARK: See **POPULATION CENTERS**.

VISIT: The entry of a person onto lands or waters administered by the NPS. There are three categories of visits to parks: (1) visits that are not reported as visitor use; (2) non-recreation visits that are reported as visitor use; and (3) recreation visits that are reported as visitor use. Negligible transit is non-reportable. Same-day reentries and entries to detached portions of the same park on the same day are a single visit. Visits are reported separately for two contiguous, independently authorized parks.

VISITOR: An individual who may generate one or more visits.

VISITOR DAY: Twelve visitor hours in a park.

VISITOR HOURS: The presence of one or more persons, excluding service personnel, in a park for continuous, intermittent, or simultaneous periods of time aggregating one hour (e.g., one person for one hour, two persons for one-half hour each, etc.). Although same day attendance at detached portions of the same park is considered duplicate counting and is reported as a single visit, the time spent by a visitor at detached units is added together for the visitor hour estimate.

Acknowledgments

The authors wish to acknowledge the assistance of interns Austin Lackey and Leanne Mangeni of Colorado State University. They assisted the NPS Socioeconomics and Resource Recovery Division with quality control, error checking, and data management for the 2024 visitor use data collection season.

Introduction

The National Park Service set a record for recreation visits in 2024, surpassing the previous record set during the NPS Centennial celebration year of 2016. In 2024, National Park System units received 331,863,358 recreation visits, which is almost 6.4 million visits (2.0%) higher than in 2023. It is also nearly 900,000 visits higher than the previous record year in 2016. Recreation visitor hours were slightly lower than in 2023 (-1.0%) at just under 1.4 billion. Total overnight stays were up 2.6% from 2023 with 13,412,294 person-nights stayed in parks.

Four new parks were added to the reporting system in 2024, bringing the total number of reporting parks to 404 out of the 433 parks in the National Park System. The new parks—Amache National Historic Site, Emmett Till and Mamie Till-Mobley National Monument, Ice Age National Scenic Trail, and Ste. Geneviève National Historical Park—were responsible for a combined 61,888 recreation visits. Ice Age NST is the first national scenic trail to report official NPS visitor use statistics.

Twenty-eight parks set a record for recreation visits in 2024 and twelve of those broke records they set in 2023; see Appendix A for a list of record-setting parks. Several parks passed recreation visit milestones including 5 million accumulated recreation visits at Coronado NMEM (1955–2024), Flight 93 NMEM (2007–2024), and Gauley River NRA (1993–2024); 50 million accumulated recreation visits at Buffalo NR (1973–2024); and 100 million accumulated recreation visits at Cuyahoga Valley NRA (1978–2024).

Record recreation visits to the NPS in 2024 were driven by many different factors. At least 40% of parks had monthly recreation visits in 2024 that were higher than their 10-year average and 38 parks had all 12 months in 2024 higher than their 10-year average. Nearly 60% of parks had shoulder season months (months immediately before or after peak season months) higher than their 10-year average. While visits to individual parks will always fluctuate up or down due to a wide variety of factors from year to year, there has been a noticeable “overall visitation lift” across the National Park System compared to a decade ago.

Specific factors influencing visits to parks in 2024 include:

- Mild weather across the country early and late in the year drove an upward bump for visits earlier than usual in spring and later than usual in autumn.
- A total solar eclipse in early April provided more visits than usual to several parks in the path of totality.
- Twelve parks had temporary closures due to wildland fires.
- Seventeen parks had temporary closures due to Hurricane Helene while an additional four had closures due to Hurricane Milton. Some closures lingered through the end of the calendar year.
- Six parks had temporary closures and damage due to other floods, landslides, or storms.

- Many parks that did not set records, but that saw a notable increase from 2023–24, were returning to their pre-pandemic levels of visitation.

Supplementary information on NPS visitor use statistics including program history and policy, definitions, frequently asked questions, and information on accessing visitor use data can be found on the web (<https://www.nps.gov/subjects/socialscience/visitor-use-statistics.htm>). Information about other elements of the NPS Socioeconomics and Resource Recovery Division, such as economic valuation, visitor spending effects, and socioeconomic monitoring, may be found on the social science subject website (<https://www.nps.gov/subjects/socialscience/index.htm>). Additional inquiries about NPS visitor use statistics may be directed to:

National Park Service
NRSS/Socioeconomics and Resource Recovery Division
1201 Oakridge Drive
Fort Collins, CO 80525
nrss_social_science_stats@nps.gov

2024 Visitor Use Data

The following tables and figures present official visitor use data for the National Park Service in 2024; some tables and figures compare those data to 2023 visitor use estimates. Endnotes that apply to multiple tables can be found at the end of this document.

Recreation Visits by Site Designation

Table 1 lists the number of recreation visits in 2024 for parks grouped by site designation. Of the 433 parks, 404 reported visitor use statistics in 2024. Designated national parks received the highest percentage of recreation visits (28%), followed by national recreation areas (16%), national memorials (12%), and national parkways (10%). The figures that follow show percentage of recreation visits by site designation (Figure 1) and a comparison with 2023 by site designation (Figure 2).

Table 1. 2024 Recreation Visits by Site Designation.

Site Designation	Percent of Total Visits ^A	2024 Recreation Visits	Percent Change from 2023 ^B	Units Reporting Visits	Units Administered
International Historic Site	<1%	13,508	8.7%	1	1
National Battlefield	1%	2,022,224	7.0%	10	11
National Battlefield Park	1%	2,434,915	-2.1%	4	4
National Battlefield Site	–	–	–	0	1
National Historic Site	3%	8,584,995	6.3%	73	76
National Historical Park	9%	28,990,110	4.9%	60	63
National Lakeshore	1%	2,876,780	4.4%	3	3
National Memorial	12%	41,009,531	-0.3%	31	31
National Military Park	1%	4,162,962	-0.7%	9	9
National Monument	6%	21,228,316	7.4%	76	87
National Park	28%	94,287,567	2.1%	63	63
National Parkway	10%	32,340,993	0.1%	4	4
National Preserve	1%	4,808,459	-5.3%	19	19
National Recreation Area	16%	53,038,506	3.1%	18	18
National Reserve	<1%	89,949	-2.3%	1	2
National River	1%	4,065,862	3.1%	4	4
National Scenic Trail	<1%	29,711	–	1	6
National Seashore	7%	22,361,706	-2.8%	10	10
National Wild & Scenic River	1%	1,775,306	9.2%	8	10
Park (Other)	2%	7,741,958	1.6%	9	11
NPS Total	100%	331,863,358	2.0%	404	433

^A Percents do not equal 100 due to rounding.

^B Percents do not add to total because each row is a separate percent change by designation.

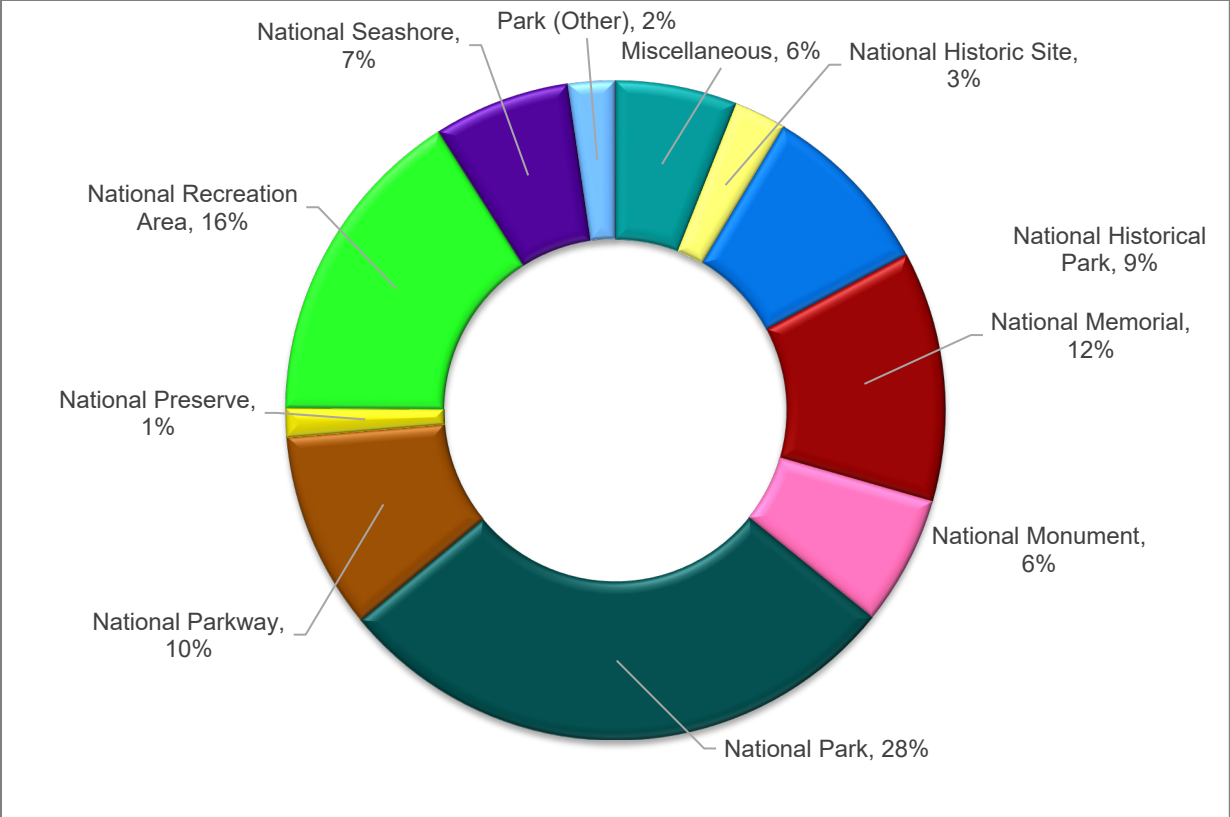


Figure 1. Percentage of Recreation Visits by Site Designation, 2024. Note: “Miscellaneous” includes designations listed in Table 1 but not shown separately in this figure—International Historic Site, National Battlefield, National Battlefield Park, National Lakeshore, National Military Park, National Reserve, National River, National Scenic Trail, and National Wild & Scenic River.

NPS

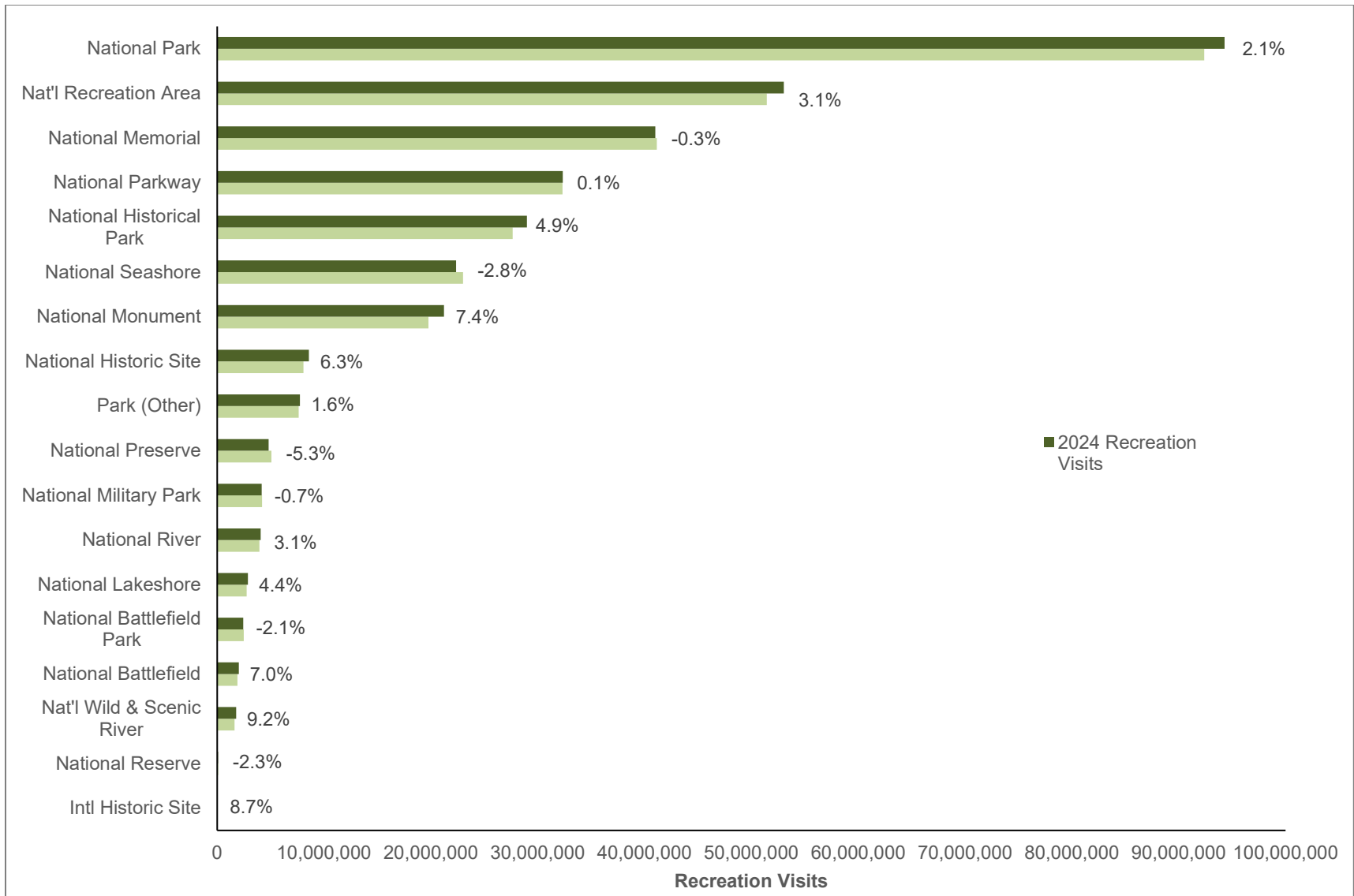


Figure 2. Recreation Visits by Site Designation, 2023 to 2024. Bar labels indicate percent change in recreation visits from 2023 to 2024.
 NPS

Recreation Visits by State

Table 2 reports 2024 NPS recreation visits in each state, the District of Columbia, and the U.S. territories of American Samoa, Guam, Puerto Rico, and the U.S. Virgin Islands. The table also shows 2023 recreation visits and the percent change in recreation visits from 2023 to 2024. Figure 3 displays the percent change from 2023 to 2024 for each state and territory. Overall, the number of recreation visits is up 2.0% from 2023 (331,863,358 in 2024 compared to 325,498,646 in 2023).

Table 2. 2024 Recreation Visits by State and U.S. Territory Compared to 2023.

State	Recreation Visits 2024 ^A	Recreation Visits 2023 ^A	Percent Change ^B
Alabama	1,390,582	1,287,291	8.0%
Alaska	3,473,715	3,254,809	6.7%
American Samoa	22,567	12,135	86.0%
Arizona	11,254,081	10,809,520	4.1%
Arkansas	4,471,452	4,447,751	0.5%
California	39,405,196	36,211,847	8.8%
Colorado	7,227,859	7,280,581	-0.7%
Connecticut	34,246	36,313	-5.7%
Delaware	192,220	126,414	52.1%
District of Columbia	41,961,726	41,101,341	2.1%
Florida	13,503,256	13,309,146	1.5%
Georgia	7,010,225	6,781,837	3.4%
Guam	373,974	415,533	-10.0%
Hawai'i	4,618,839	4,808,385	-3.9%
Idaho	795,625	769,552	3.4%
Illinois	188,237	188,138	0.1%
Indiana	3,001,734	3,040,462	-1.3%
Iowa	210,006	171,523	22.4%
Kansas	110,282	106,700	3.4%
Kentucky	2,037,341	1,975,537	3.1%
Louisiana	270,126	300,411	-10.1%
Maine	4,010,342	3,930,777	2.0%
Maryland	6,563,784	6,305,729	4.1%
Massachusetts	8,836,572	8,732,682	1.2%
Michigan	2,923,630	2,820,169	3.7%
Minnesota	1,077,540	1,090,134	-1.2%
Mississippi	8,800,187	9,065,256	-2.9%
Missouri	4,396,444	4,170,417	5.4%

^A Sum of states may not equal NPS Total due to rounding.

^B Percents by state do not add to total because each row is a separate percent change by state.

Table 2 (continued). 2024 Recreation Visits by State and U.S. Territory Compared to 2023.

State	Recreation Visits 2024^A	Recreation Visits 2023^A	Percent Change^B
Montana	5,931,593	5,656,615	4.9%
Nebraska	330,027	314,896	4.8%
Nevada	5,022,203	4,552,350	10.3%
New Hampshire	26,685	30,537	-12.6%
New Jersey	5,212,761	5,195,546	0.3%
New Mexico	2,375,358	2,265,573	4.8%
New York	18,741,053	17,197,344	9.0%
North Carolina	18,796,184	20,893,207	-10.0%
North Dakota	755,846	767,938	-1.6%
Ohio	3,244,285	3,195,784	1.5%
Oklahoma	1,682,867	2,094,232	-19.6%
Oregon	988,605	1,045,772	-5.5%
Pennsylvania	7,972,917	8,300,004	-3.9%
Puerto Rico	1,329,728	1,314,819	1.1%
Rhode Island	43,242	37,707	14.7%
South Carolina	1,120,740	1,281,602	-12.6%
South Dakota	3,850,934	4,423,548	-12.9%
Tennessee	12,571,303	10,545,649	19.2%
Texas	5,366,208	5,339,503	0.5%
Utah	15,821,579	15,678,158	0.9%
Vermont	81,713	71,799	13.8%
Virgin Islands	603,042	510,794	18.1%
Virginia	21,362,318	23,263,466	-8.2%
Washington	9,036,038	8,294,749	8.9%
West Virginia	2,580,211	2,343,355	10.1%
Wisconsin	733,827	650,296	12.8%
Wyoming	8,120,301	7,683,017	5.7%
NPS Total	331,863,358	325,498,646	2.0%

^A Sum of states may not equal NPS Total due to rounding.

^B Percents by state do not add to total because each row is a separate percent change by state.

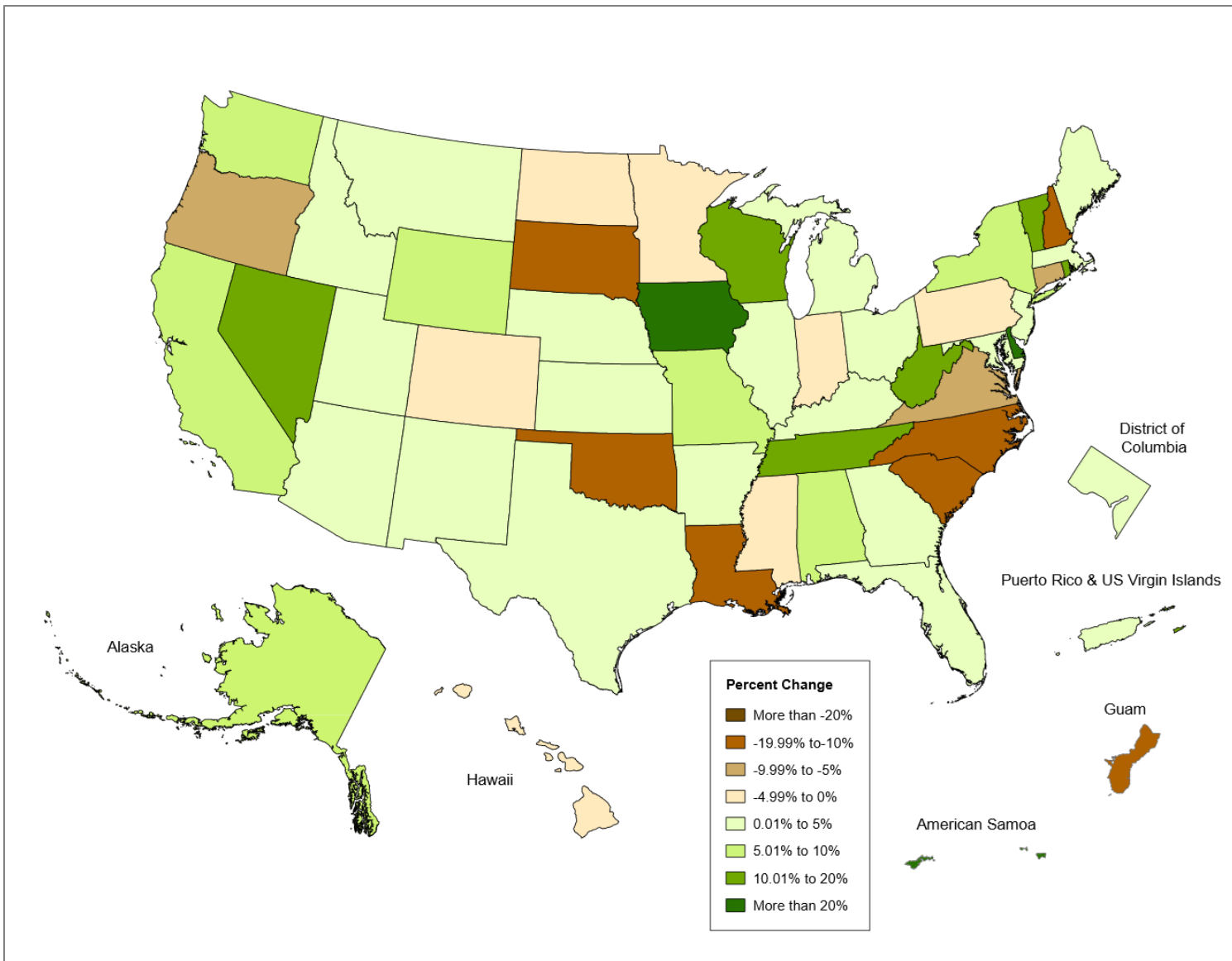


Figure 3. Percent Change of Recreation Visits by State or Territory, 2023 to 2024.

NPS

Recreation Visits / Visitor Days by Population Center

Table 3 shows the number of recreation visits, visitor days, and change from the previous year for parks by population center. Population centers are described in the Definitions section of this abstract. Figure 4 compares 2023 to 2024 recreation visits by population center and highlights that recreation visits and visitor days increased for Outlying, Suburban, Rural, and Urban areas while they decreased slightly for Remote and Mixed areas. The largest increase was Suburban areas at 5.0%

Table 3. 2024 Recreation Visits / Visitor Days and Change from 2023 by Population Center.

Population Center	Recreation Visits	Percent Change ^A	Recreation Visitor Days	Percent Change ^A
Remote Area	2,607,644	-1.0%	1,501,351	1.5%
Outlying Area	44,815,799	0.3%	20,071,038	4.5%
Suburban Area	47,377,809	5.0%	14,331,891	1.9%
Rural Area	72,746,371	3.1%	40,422,887	3.1%
Mixed Area	76,945,771	-0.8%	30,747,340	-10.8%
Urban Area	87,369,964	2.9%	9,248,828	1.9%
NPS Total	331,863,358	2.0%	116,323,336	-1.0%

^A Percents by population center do not add to total because each row is a separate percent change by center.

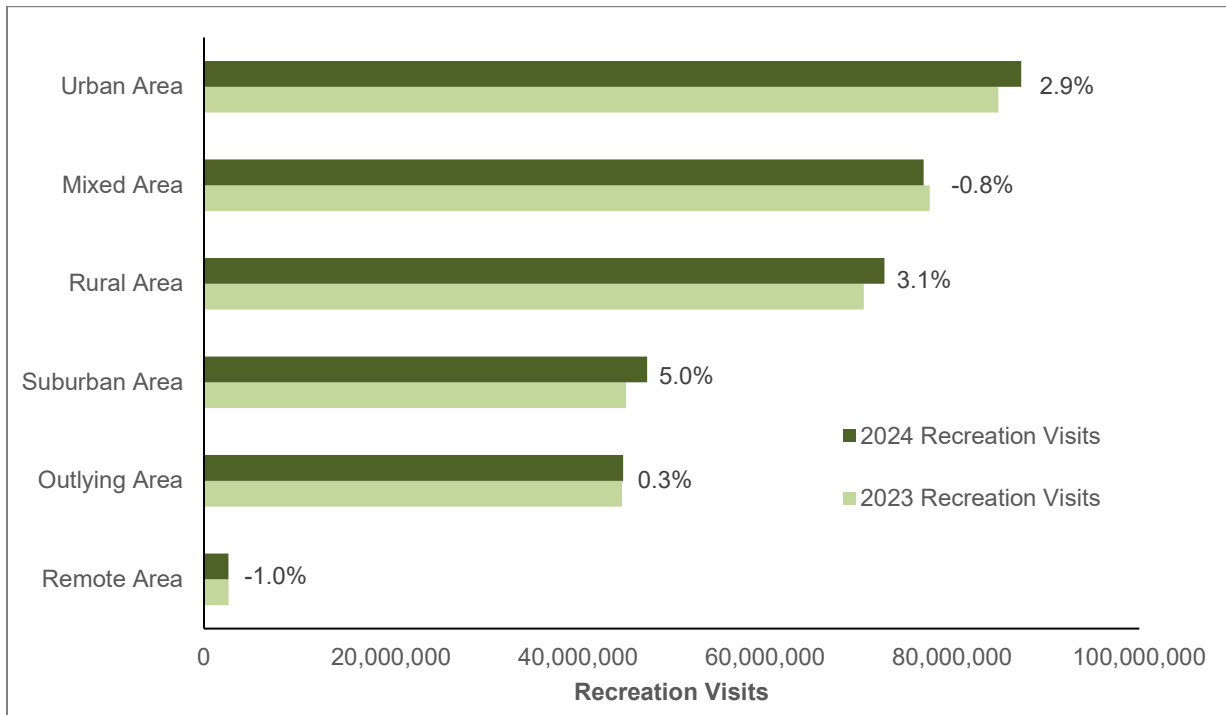


Figure 4. Recreation Visits by Population Center, 2023 to 2024.

NPS

Recreation Visits / Visitor Days and Non-Recreation Visits / Visitor Days by Park

Table 4 provides a comprehensive record of recreation visits and visitor days for all NPS units that reported visitor use data. The table also shows non-recreation visits and visitor days, which includes through traffic (commuters), persons going to and from inholdings, tradespeople with business in the park, and government personnel—excluding NPS employees—with official duties in the park. Recreation visits were up 2.0% from 2023, while recreation visitor days were down 1.0%. Both non-recreation visits and visitor days were up from 2023 (0.2% and 0.4%, respectively). Superscript references can be found in the Endnotes.

Table 4. 2024 Recreation Visits / Visitor Days and Non-Recreation Visits / Visitor Days and Percent Change from 2023 by Park.

Park Name	Recreation Visits	Percent Change	Non-Rec Visits	Percent Change	Recreation Visitor Days	Percent Change	Non-Rec Visitor Days	Percent Change
Abraham Lincoln Birthplace NHP	249,166	3.8%	0	0.0%	20,764	3.8%	0	0.0%
Acadia NP	3,961,661	2.1%	47,100	0.0%	2,245,729	4.4%	3,925	0.0%
Adams NHP	45,656	81.0%	446	-52.5%	3,734	82.0%	19	-52.1%
African Burial Ground NM	36,007	-11.8%	0	0.0%	1,869	-9.7%	0	0.0%
Agate Fossil Beds NM	19,395	24.6%	0	0.0%	4,159	26.5%	0	0.0%
Alagnak WR	278	20.3%	109	21.1%	796	123.2%	319	233.3%
Alibates Flint Quarries NM ⁵	8,558	42.5%	0	0.0%	1,783	42.5%	0	0.0%
Allegheny Portage Railroad NHS	193,903	-2.9%	180	0.0%	26,321	-1.7%	4	0.0%
Amache NHS ²	4,771	-	336	-	398	-	82	-
Amistad NRA ⁵	832,294	-0.5%	0	-100.0%	514,235	-0.2%	0	-100.0%
Andersonville NHS	72,925	-6.2%	0	0.0%	12,154	-6.2%	0	0.0%
Andrew Johnson NHS ⁵	55,270	-9.5%	0	0.0%	2,192	-6.3%	0	0.0%
Aniakchak NM & PRES ⁴	191	-4.0%	63	-43.8%	771	25.9%	805	-33.3%
Antietam NB	197,340	28.5%	0	0.0%	33,280	20.3%	0	0.0%
Apostle Islands NL ⁵	253,703	2.6%	0	0.0%	70,843	-1.4%	0	0.0%
Appomattox Court House NHP	83,769	-8.9%	0	0.0%	10,139	-8.9%	0	0.0%
Arches NP ⁴	1,466,528	-1.0%	7,459	-	815,193	79.1%	2,155	-
Arkansas Post NMEM	26,203	4.7%	0	0.0%	3,275	4.7%	0	0.0%
Arlington House The R.E. Lee MEM	447,641	6.8%	0	0.0%	18,652	6.8%	0	0.0%

Table 4 (continued). 2024 Recreation Visits / Visitor Days and Non-Recreation Visits / Visitor Days and Percent Change from 2023 by Park.

Park Name	Recreation Visits	Percent Change	Non-Rec Visits	Percent Change	Recreation Visitor Days	Percent Change	Non-Rec Visitor Days	Percent Change
Assateague Island NS	2,282,498	-2.9%	3,600	0.0%	1,633,686	-2.7%	300	0.0%
Aztec Ruins NM	40,019	-15.8%	159	-17.2%	5,002	-15.8%	13	-17.2%
Badlands NP ⁵	1,094,245	4.6%	55,984	0.0%	395,068	7.3%	2,333	0.0%
Bandelier NM ⁵	213,595	7.1%	840	0.0%	97,119	20.4%	18	0.0%
Belmont-Paul Women's Equality NM	7,704	278.8%	0	0.0%	642	278.8%	0	0.0%
Bent's Old Fort NHS ⁵	16,102	-18.3%	0	0.0%	2,348	-18.3%	0	0.0%
Bering Land Bridge NPRES ⁵	2,642	0.0%	1,126	-0.2%	2,907	0.0%	1,719	0.2%
Big Bend NP	561,458	10.3%	2,700	0.0%	945,103	18.3%	675	0.0%
Big Cypress NPRES ^{4,5}	2,216,708	20.0%	0	0.0%	388,901	12.2%	0	0.0%
Big Hole NB ⁵	45,211	-18.1%	0	0.0%	5,244	-17.3%	0	0.0%
Big South Fork NRR ⁵	779,602	1.8%	0	0.0%	461,308	-0.2%	0	0.0%
Big Thicket NPRES	271,823	3.4%	0	0.0%	65,153	1.6%	0	0.0%
Bighorn Canyon NRA ⁵	219,815	1.0%	6,900	0.0%	76,763	5.5%	287	0.0%
Biscayne NP	512,213	-10.3%	0	0.0%	131,669	-12.7%	0	0.0%
Black Canyon of the Gunnison NP ⁵	335,862	-5.9%	0	0.0%	154,135	-3.6%	0	0.0%
Blue Ridge PKWY ^{4,5}	16,733,639	-0.1%	1,010,223	-48.0%	8,578,301	-1.0%	42,093	-48.0%
Bluestone NSR ⁵	7,327	-66.1%	0	0.0%	1,527	-66.1%	0	0.0%
Booker T. Washington NM	24,209	-15.7%	84	0.0%	2,161	-17.3%	1	0.0%
Boston African American NHS	393,386	0.9%	0	0.0%	65,564	0.9%	0	0.0%
Boston Harbor Islands NRA	28,157	0.6%	0	0.0%	587	0.6%	0	0.0%
Boston NHP ⁵	2,744,458	9.0%	51,660	0.3%	183,455	7.0%	732	0.4%
Brown v. Board of Education NHS	21,919	16.4%	0	0.0%	3,653	16.4%	0	0.0%
Bryce Canyon NP	2,498,075	1.5%	408,146	-0.1%	1,116,353	1.4%	10,204	-0.1%
Buck Island Reef NM ⁵	42,289	-8.5%	0	0.0%	20,517	-6.8%	0	0.0%
Buffalo NR	1,686,348	8.8%	0	0.0%	750,969	10.1%	0	0.0%

Table 4 (continued). 2024 Recreation Visits / Visitor Days and Non-Recreation Visits / Visitor Days and Percent Change from 2023 by Park.

Park Name	Recreation Visits	Percent Change	Non-Rec Visits	Percent Change	Recreation Visitor Days	Percent Change	Non-Rec Visitor Days	Percent Change
Cabrillo NM	845,912	4.4%	81,792	0.0%	105,420	4.4%	1,704	0.0%
Camp Nelson NM	34,716	111.7%	0	0.0%	2,170	111.7%	0	0.0%
Canaveral NS ⁵	1,884,091	-6.7%	0	0.0%	398,061	-6.9%	0	0.0%
Cane River Creole NHP ⁵	12,592	7.6%	0	0.0%	2,099	7.6%	0	0.0%
Canyon de Chelly NM	387,433	16.2%	567,325	20.4%	222,595	15.2%	94,554	20.4%
Canyonlands NP	818,492	2.3%	0	0.0%	433,003	1.9%	0	0.0%
Cape Cod NS	3,823,242	0.4%	29,548	0.0%	601,784	0.1%	14,774	0.0%
Cape Hatteras NS	2,762,954	-2.2%	141,654	-2.4%	1,290,390	-2.6%	35,441	-2.7%
Cape Krusenstern NM	17,736	-0.5%	7,297	-6.7%	16,105	-1.5%	16,317	-5.2%
Cape Lookout NS ^{4,5}	552,786	4.3%	2,160	0.0%	234,725	-1.0%	540	0.0%
Capitol Reef NP ⁵	1,422,490	12.1%	99,342	13.0%	129,048	-19.7%	8,279	13.0%
Capulin Volcano NM ⁵	96,078	8.5%	654	-57.6%	10,951	8.3%	55	-57.6%
Carl Sandburg Home NHS ^{4,5}	113,362	-23.9%	0	0.0%	14,170	-23.9%	0	0.0%
Carlsbad Caverns NP ⁵	460,474	16.8%	0	0.0%	146,558	17.3%	0	0.0%
Carter G. Woodson Home NHS ⁵	30	-	0	0.0%	1	-	0	0.0%
Casa Grande Ruins NM	104,429	-6.3%	2,160	0.0%	11,854	-6.3%	18	0.0%
Castillo de San Marcos NM ⁵	579,825	-10.3%	0	0.0%	36,239	-10.3%	0	0.0%
Castle Clinton NM	3,822,759	-2.7%	264	41.9%	159,761	-2.6%	5	73.0%
Catoctin Mountain Park	380,681	-12.0%	248,950	26.5%	135,550	-8.1%	2,188	18.5%
Cedar Breaks NM	722,834	17.7%	8,991	10.3%	132,042	21.4%	1,499	10.3%
César E. Chávez NM	26,641	121.9%	0	0.0%	1,110	121.8%	0	0.0%
Chaco Culture NHP ⁵	37,840	-5.9%	10,560	0.0%	51,884	-0.4%	880	0.0%
Chamizal NMEM ⁵	6,627	-20.4%	110,915	4.6%	567	-18.2%	32,350	4.6%
Channel Islands NP ⁵	262,581	-20.1%	7,852	-35.6%	188,605	-46.8%	15,704	-35.6%
Charles Pinckney NHS ⁵	30,903	-3.8%	0	0.0%	5,151	-3.7%	0	0.0%

Table 4 (continued). 2024 Recreation Visits / Visitor Days and Non-Recreation Visits / Visitor Days and Percent Change from 2023 by Park.

Park Name	Recreation Visits	Percent Change	Non-Rec Visits	Percent Change	Recreation Visitor Days	Percent Change	Non-Rec Visitor Days	Percent Change
Charles Young Buffalo Soldiers NM ⁵	4,716	42.8%	0	0.0%	395	43.6%	0	0.0%
Chattahoochee River NRA ⁵	2,940,804	-7.6%	0	0.0%	980,268	-7.6%	0	0.0%
Chesapeake & Ohio Canal NHP ⁵	4,421,276	-1.1%	11,880	0.0%	783,981	-1.4%	990	0.0%
Chickamauga & Chattanooga NMP	1,003,081	-1.8%	2,227,106	-0.2%	157,467	-1.3%	27,839	-0.2%
Chickasaw NRA ⁵	1,670,498	-19.8%	0	0.0%	469,619	-21.9%	0	0.0%
Chiricahua NM ⁵	71,390	14.1%	3,600	0.0%	35,766	3.8%	100	0.0%
Christiansted NHS	124,539	16.2%	0	0.0%	5,472	12.8%	0	0.0%
City of Rocks NRES	89,949	-2.3%	0	0.0%	26,337	-1.9%	0	0.0%
Clara Barton NHS	13,334	215.7%	0	0.0%	1,111	215.7%	0	0.0%
Colonial NHP	2,551,228	-5.2%	1,463,616	0.2%	222,448	-5.2%	60,984	0.2%
Colorado NM ⁴	488,038	0.4%	366,138	3.4%	122,037	-7.7%	15,256	3.4%
Congaree NP	242,049	-3.2%	0	0.0%	81,537	-2.1%	0	0.0%
Coronado NMEM	164,426	17.4%	2,508	0.0%	13,098	14.1%	104	0.0%
Cowpens NB ⁵	156,287	-31.0%	0	0.0%	12,166	-27.5%	0	0.0%
Crater Lake NP ⁵	504,942	-9.8%	49,600	0.0%	254,764	-9.8%	2,067	0.0%
Craters of the Moon NM & PRES	314,118	21.9%	0	0.0%	74,145	17.8%	0	0.0%
Cumberland Gap NHP ⁵	729,249	-8.5%	6,181,645	1.4%	143,703	-9.2%	257,569	1.4%
Cumberland Island NS ⁵	64,706	-12.3%	0	0.0%	63,892	-12.4%	0	0.0%
Curecanti NRA	980,899	2.4%	0	0.0%	345,693	-0.7%	0	0.0%
Cuyahoga Valley NP ⁵	2,912,454	1.8%	0	0.0%	670,756	-5.5%	0	0.0%
Dayton Aviation Heritage NHP ⁵	87,032	-3.3%	0	0.0%	10,550	2.8%	0	0.0%
De Soto NMEM ⁵	155,016	-33.2%	0	0.0%	21,315	-33.2%	0	0.0%
Death Valley NP ⁵	1,440,484	31.0%	57,328	29.8%	867,874	27.3%	7,166	29.8%
Delaware Water Gap NRA	4,079,763	-3.0%	54,000	0.0%	1,451,699	-1.9%	2,250	0.0%
Denali NP & PRES ⁵	466,227	-6.5%	887,033	4.7%	468,585	-6.0%	18,480	4.7%

Table 4 (continued). 2024 Recreation Visits / Visitor Days and Non-Recreation Visits / Visitor Days and Percent Change from 2023 by Park.

Park Name	Recreation Visits	Percent Change	Non-Rec Visits	Percent Change	Recreation Visitor Days	Percent Change	Non-Rec Visitor Days	Percent Change
Devils Postpile NM ⁵	94,215	9.4%	0	0.0%	27,479	9.4%	0	0.0%
Devils Tower NM ⁴	540,890	5.8%	2,347	-0.5%	119,125	9.2%	98	-0.6%
Dinosaur NM	322,113	-1.4%	732	0.0%	173,335	-3.3%	61	0.0%
Dry Tortugas NP	84,873	0.7%	1,710	6.3%	51,658	-1.4%	1,710	6.3%
Dwight D. Eisenhower MEM	731,476	9.6%	0	0.0%	30,478	9.6%	0	0.0%
Edgar Allan Poe NHS ⁵	8,131	-47.5%	0	0.0%	678	-47.5%	0	0.0%
Effigy Mounds NM	61,975	0.3%	1,200	0.0%	12,912	0.3%	17	0.0%
Eisenhower NHS	123,466	24.9%	0	0.0%	16,462	24.9%	0	0.0%
El Malpais NM ⁵	163,679	-2.1%	720	0.0%	54,559	-2.1%	15	0.0%
El Morro NM	57,827	5.5%	12,100	5.3%	13,557	4.0%	333	5.4%
Eleanor Roosevelt NHS	23,699	37.9%	0	0.0%	2,962	37.9%	0	0.0%
Emmett Till and Mamie Till-Mobley NM ²	3,513	-	4,560	-	277	-	590	-
Eugene O'Neill NHS	17,653	13.6%	0	-100.0%	1,224	7.4%	0	-100.0%
Everglades NP ⁵	741,983	-8.4%	6,000	0.0%	335,918	-18.9%	2,250	0.0%
Federal Hall NMEM	63,314	-17.5%	7,086	24.8%	4,050	-21.4%	1,676	25.0%
Fire Island NS ^{4,6}	303,731	1.6%	199,041	4.5%	88,713	-6.2%	49,760	4.5%
First Ladies NHS	12,642	13.0%	0	0.0%	2,107	13.0%	0	0.0%
First State NHP ⁴	208,870	46.0%	122	0.0%	47,101	70.7%	81	0.0%
Flight 93 NMEM	349,566	-7.5%	0	0.0%	50,978	-7.5%	0	0.0%
Florissant Fossil Beds NM	71,499	12.2%	0	0.0%	7,558	17.5%	0	0.0%
Ford's Theatre NHS	457,132	16.3%	4,125	-47.8%	54,214	20.1%	1,031	-47.8%
Fort Bowie NHS	8,483	1.8%	0	0.0%	1,424	1.9%	0	0.0%
Fort Caroline NMEM ⁵	260,350	-19.6%	0	0.0%	21,696	-19.6%	0	0.0%
Fort Davis NHS	42,553	5.9%	193	-11.9%	7,092	5.9%	40	58.3%
Fort Donelson NB	166,026	-7.7%	434,049	-0.4%	9,214	-7.8%	1,194	-0.4%

Table 4 (continued). 2024 Recreation Visits / Visitor Days and Non-Recreation Visits / Visitor Days and Percent Change from 2023 by Park.

Park Name	Recreation Visits	Percent Change	Non-Rec Visits	Percent Change	Recreation Visitor Days	Percent Change	Non-Rec Visitor Days	Percent Change
Fort Frederica NM ⁵	243,027	-15.0%	1,800	0.0%	20,440	-15.0%	37	0.0%
Fort Laramie NHS	44,045	-6.6%	0	0.0%	5,708	-6.1%	0	0.0%
Fort Larned NHS	26,219	0.4%	0	0.0%	4,370	0.4%	0	0.0%
Fort Matanzas NM ⁵	680,040	-4.4%	0	0.0%	57,496	-4.0%	0	0.0%
Fort McHenry NM & HS ⁵	394,175	-8.3%	720	0.0%	49,272	-8.3%	30	0.0%
Fort Necessity NB	276,173	10.9%	120	0.0%	32,541	9.3%	4	0.0%
Fort Point NHS	1,189,908	31.7%	0	0.0%	56,809	32.4%	0	0.0%
Fort Pulaski NM ⁵	356,993	-20.3%	53,563	-30.8%	59,521	-20.3%	1,116	-30.8%
Fort Raleigh NHS	274,783	4.3%	1,344	0.0%	29,798	-2.0%	112	0.0%
Fort Scott NHS	24,654	-3.3%	426	-22.8%	3,082	-3.3%	12	-22.1%
Fort Smith NHS	124,486	-7.9%	0	0.0%	13,797	-7.9%	0	0.0%
Fort Stanwix NM ⁵	79,704	-4.4%	0	0.0%	9,963	-4.4%	0	0.0%
Fort Sumter and Fort Moultrie NHP	384,308	-6.7%	502,633	-1.2%	73,878	-6.8%	20,943	-1.2%
Fort Union NM	9,217	-3.7%	240	0.0%	906	-3.7%	2	0.0%
Fort Union Trading Post NHS	12,028	-7.1%	238	-38.5%	1,231	-8.2%	5	-39.2%
Fort Vancouver NHS	1,007,756	4.1%	900	-76.6%	89,663	3.0%	600	-76.6%
Fort Washington Park	491,013	9.5%	0	0.0%	159,439	10.2%	0	0.0%
Fossil Butte NM	21,491	10.9%	250	11.1%	2,975	20.5%	18	21.0%
Franklin Delano Roosevelt MEM	3,225,923	-2.2%	0	0.0%	134,413	-2.2%	0	0.0%
Frederick Douglass NHS	25,836	100.2%	0	0.0%	2,153	100.2%	0	0.0%
Frederick Law Olmsted NHS	13,218	11.0%	0	0.0%	2,203	11.0%	0	0.0%
Fredericksburg & Spotsylvania NMP	818,533	-3.1%	1,485,261	4.6%	32,736	0.5%	13,952	2.2%
Friendship Hill NHS	19,465	1.1%	0	0.0%	3,735	-3.3%	0	0.0%
Gates of the Arctic NP & PRES	11,907	7.8%	0	0.0%	7,611	-9.8%	0	0.0%
Gateway Arch NP	2,563,052	5.8%	0	0.0%	469,893	5.8%	0	0.0%

Table 4 (continued). 2024 Recreation Visits / Visitor Days and Non-Recreation Visits / Visitor Days and Percent Change from 2023 by Park.

Park Name	Recreation Visits	Percent Change	Non-Rec Visits	Percent Change	Recreation Visitor Days	Percent Change	Non-Rec Visitor Days	Percent Change
Gateway NRA	8,929,035	2.6%	1,084,833	9.1%	2,029,670	2.3%	180,805	9.1%
Gauley River NRA	272,898	45.8%	0	0.0%	127,421	38.9%	0	0.0%
General Grant NMEM ⁵	110,602	31.4%	7,693	-15.8%	4,814	55.2%	1,277	-15.1%
George Rogers Clark NHP	166,621	14.4%	0	0.0%	18,606	14.4%	0	0.0%
George Washington Birthplace NM	58,983	-40.3%	7,200	0.0%	14,768	-41.0%	600	0.0%
George Washington Carver NM	39,081	4.8%	0	0.0%	4,234	4.8%	0	0.0%
George Washington MEM PKWY	6,782,717	-8.2%	35,358,148	1.7%	772,423	-7.7%	1,473,256	1.7%
Gettysburg NMP ⁵	741,574	-0.1%	74,400	0.0%	256,029	-2.3%	1,029	0.0%
Gila Cliff Dwellings NM ⁴	47,378	39.5%	0	0.0%	5,212	22.7%	0	0.0%
Glacier Bay NP & PRES	736,282	4.6%	771	68.3%	774,047	4.7%	13,790	72.2%
Glacier NP ⁵	3,208,755	9.4%	3,058	15.7%	2,920,641	7.0%	2,231	17.0%
Glen Canyon NRA ⁵	4,725,610	-9.2%	25,354	-6.4%	2,500,520	-28.9%	25,354	-6.4%
Golden Gate NRA	17,187,508	14.9%	0	0.0%	3,775,774	16.1%	0	0.0%
Golden Spike NHP	55,285	4.3%	31,000	0.0%	10,758	4.0%	1,292	0.0%
Governors Island NM	63,086	63.1%	0	0.0%	10,514	63.1%	0	0.0%
Grand Canyon NP ⁵	4,919,163	3.9%	21,010	67.6%	6,423,732	4.1%	1,751	67.6%
Grand Portage NM ⁴	88,931	0.7%	0	0.0%	15,788	1.6%	0	0.0%
Grand Teton NP	3,628,222	6.2%	1,528,765	-2.7%	1,866,581	2.7%	127,397	-2.7%
Grant-Kohrs Ranch NHS	27,479	1.0%	0	0.0%	2,817	1.0%	0	0.0%
Great Basin NP	152,068	6.1%	3,500	191.7%	118,456	-6.2%	146	191.7%
Great Sand Dunes NP & PRES ⁴	437,661	-14.6%	470	0.0%	253,713	2.6%	39	0.0%
Great Smoky Mountains NP ^{4,5}	12,191,834	-8.3%	10,832,000	0.0%	3,991,573	-51.2%	451,333	0.0%
Greenbelt Park	77,642	-15.4%	0	0.0%	87,159	249.4%	0	0.0%
Guadalupe Mountains NP ⁵	226,134	-0.5%	1,440	0.0%	52,144	-3.0%	120	0.0%
Guilford Courthouse NMP	461,143	13.9%	2,011,307	22.0%	20,828	11.9%	1,391	22.0%

Table 4 (continued). 2024 Recreation Visits / Visitor Days and Non-Recreation Visits / Visitor Days and Percent Change from 2023 by Park.

Park Name	Recreation Visits	Percent Change	Non-Rec Visits	Percent Change	Recreation Visitor Days	Percent Change	Non-Rec Visitor Days	Percent Change
Gulf Islands NS ⁵	7,801,176	-5.8%	217,406	-23.2%	2,051,854	-6.2%	3,248	-21.2%
Hagerman Fossil Beds NM	39,104	16.9%	0	0.0%	4,888	16.9%	0	0.0%
Haleakalā NP ⁵	732,477	-7.4%	20,160	0.0%	183,241	-9.5%	1,680	0.0%
Hamilton Grange NMEM	63,647	30.8%	65	-19.8%	3,396	21.3%	2	100.0%
Hampton NHS	12,260	-16.1%	600	0.0%	1,533	-16.1%	50	0.0%
Harpers Ferry NHP	488,049	14.2%	0	0.0%	162,683	14.2%	0	0.0%
Harriet Tubman Underground Railroad NHP	17,946	56.8%	0	0.0%	771	60.4%	0	0.0%
Harry S Truman NHS ⁵	24,102	-8.5%	0	0.0%	1,359	-9.6%	0	0.0%
Hawai'i Volcanoes NP	1,433,593	-11.5%	1,881,779	0.2%	764,915	-10.6%	51,749	0.2%
Herbert Hoover NHS ⁴	148,031	34.9%	1,350	-92.5%	12,336	34.9%	19	-81.3%
Home of Franklin D. Roosevelt NHS	123,848	5.1%	0	0.0%	15,389	1.5%	0	0.0%
Homestead NHP	52,330	5.0%	309,319	-10.3%	7,131	5.3%	4,124	-10.3%
Hopewell Culture NHP	65,350	5.2%	0	0.0%	10,892	5.2%	0	0.0%
Hopewell Furnace NHS	48,776	-10.2%	600	0.0%	4,918	-10.1%	25	0.0%
Horseshoe Bend NMP	64,063	-11.9%	0	0.0%	15,075	-15.0%	0	0.0%
Hot Springs NP	2,461,812	-1.6%	160,722	6.8%	598,395	4.8%	15,268	6.8%
Hovenweep NM	31,471	-10.7%	300	0.0%	10,843	17.5%	5	0.0%
Hubbell Trading Post NHS	46,419	-14.3%	4,584	0.0%	1,999	-14.3%	88	0.0%
Ice Age NST ²	29,711	-	0	-	2,476	-	0	-
Independence NHP ⁵	2,798,651	-8.0%	0	0.0%	354,355	-7.5%	0	0.0%
Indiana Dunes NP ⁵	2,705,209	-2.2%	3,943	0.0%	615,095	-3.6%	164	0.0%
Isle Royale NP ⁴	28,806	-0.5%	68	-27.7%	129,342	1.8%	2,876	-28.8%
James A. Garfield NHS ⁵	39,671	8.5%	0	0.0%	6,612	8.5%	0	0.0%
Jean Lafitte NHP & PRES	212,591	-14.4%	192,000	0.0%	21,938	-33.4%	7,580	0.0%
Jewel Cave NM	145,332	19.6%	0	-100.0%	34,465	17.4%	0	-100.0%

Table 4 (continued). 2024 Recreation Visits / Visitor Days and Non-Recreation Visits / Visitor Days and Percent Change from 2023 by Park.

Park Name	Recreation Visits	Percent Change	Non-Rec Visits	Percent Change	Recreation Visitor Days	Percent Change	Non-Rec Visitor Days	Percent Change
Jimmy Carter NHP	33,031	-19.4%	0	0.0%	3,335	-18.5%	0	0.0%
John D. Rockefeller, Jr. MEM PKWY	1,459,804	5.6%	10,800	0.0%	192,782	5.3%	225	0.0%
John Day Fossil Beds NM	122,529	-27.5%	840	0.0%	11,845	-27.5%	7	0.0%
John F. Kennedy NHS	18,180	122.2%	0	0.0%	757	122.2%	0	0.0%
John Muir NHS	45,753	-10.1%	109	395.5%	5,719	-10.1%	2	350.0%
Johnstown Flood NMEM ⁴	95,842	-39.9%	0	-100.0%	8,306	-40.6%	0	-100.0%
Joshua Tree NP	2,991,874	-8.5%	10,704	-12.1%	1,484,040	-7.0%	892	-12.1%
Kalaupapa NHP	30,774	-34.5%	0	0.0%	5,952	-30.2%	0	0.0%
Kaloko-Honokōhau NHP	351,422	20.2%	0	0.0%	63,279	19.6%	0	0.0%
Katahdin Woods and Waters NM	35,173	-8.5%	6,465	-46.3%	12,173	-11.3%	269	-46.3%
Katmai NP & PRES ⁴	36,230	7.3%	7,547	7.4%	48,473	-4.6%	6,895	-18.4%
Kenai Fjords NP	419,468	8.2%	0	0.0%	111,646	8.3%	0	0.0%
Kennesaw Mountain NBP	1,495,856	-0.2%	34,925,537	-0.1%	211,837	-4.1%	465,674	-0.1%
Keweenaw NHP	31,191	6.7%	472	-40.7%	3,839	6.0%	39	-40.7%
Kings Canyon NP ⁴	699,389	8.8%	25,305	4.5%	1,948,109	7.1%	8,435	4.5%
Kings Mountain NMP ⁵	182,463	-16.8%	181,218	-15.7%	8,236	-12.9%	2,516	-15.7%
Klondike Gold Rush NHP Alaska ^{3,5}	1,336,008	4.0%	0	0.0%	462,103	8.3%	0	0.0%
Klondike Gold Rush NHP Seattle ³	81,652	13.4%	0	0.0%	11,908	13.4%	0	0.0%
Knife River Indian Villages NHS	10,867	33.6%	512	-12.5%	1,311	33.5%	21	-12.3%
Kobuk Valley NP	17,233	-2.2%	7,621	-1.0%	17,937	-4.8%	18,793	-3.3%
Korean War Veterans MEM	4,344,305	5.1%	0	0.0%	181,013	5.1%	0	0.0%
Lake Chelan NRA ⁵	30,815	-21.8%	0	0.0%	30,622	-39.2%	0	0.0%
Lake Clark NP & PRES ⁴	18,505	10.6%	3,214	-0.3%	17,993	51.6%	6,100	93.3%
Lake Mead NRA	6,412,854	10.6%	232,590	10.6%	3,883,930	8.8%	116,295	10.6%
Lake Meredith NRA ^{4,5}	1,212,905	-9.3%	0	0.0%	607,003	87.0%	0	0.0%

Table 4 (continued). 2024 Recreation Visits / Visitor Days and Non-Recreation Visits / Visitor Days and Percent Change from 2023 by Park.

Park Name	Recreation Visits	Percent Change	Non-Rec Visits	Percent Change	Recreation Visitor Days	Percent Change	Non-Rec Visitor Days	Percent Change
Lake Roosevelt NRA	1,091,489	-4.3%	1,200	0.0%	345,586	-2.8%	50	0.0%
Lassen Volcanic NP ⁵	357,651	-14.6%	0	0.0%	312,300	-8.9%	0	0.0%
Lava Beds NM	127,563	-6.3%	771	0.0%	34,584	-10.4%	32	0.0%
LBJ Memorial Grove on the Potomac	241,358	-7.3%	0	0.0%	10,057	-7.3%	0	0.0%
Lewis & Clark NHP	267,118	-6.2%	75	-25.0%	33,249	-4.6%	2	-20.8%
Lincoln Boyhood NMEM	129,904	0.7%	16,200	0.0%	12,178	0.7%	225	0.0%
Lincoln Home NHS	154,522	-2.8%	127	36.6%	11,578	-1.7%	42	-32.5%
Lincoln MEM	8,479,349	4.7%	0	0.0%	353,306	4.7%	0	0.0%
Little Bighorn Battlefield NM	111,825	-50.8%	976	-53.4%	9,319	-50.8%	41	-53.3%
Little River Canyon NPRES ⁵	763,209	8.9%	0	0.0%	153,069	5.4%	0	0.0%
Little Rock Central High School NHS	63,767	8.9%	0	0.0%	5,314	8.9%	0	0.0%
Longfellow House Washington's HQ NHS ⁵	51,496	-23.6%	0	0.0%	6,437	-23.6%	0	0.0%
Lowell NHP	264,456	3.2%	149	52.0%	34,620	2.4%	19	52.4%
Lyndon B. Johnson NHP	119,278	0.4%	0	0.0%	29,694	-3.5%	0	0.0%
Maggie L. Walker NHS	6,310	-1.1%	0	0.0%	789	-1.1%	0	0.0%
Mammoth Cave NP	747,042	14.1%	110,001	-0.4%	485,606	12.4%	4,584	-0.4%
Manassas NBP	541,965	-4.1%	480	0.0%	33,873	-4.1%	7	0.0%
Manhattan Project NHP	74,693	24.3%	0	0.0%	9,077	20.6%	0	0.0%
Manzanar NHS	93,854	-11.0%	0	0.0%	11,732	-11.0%	0	0.0%
Marsh-Billings-Rockefeller NHP	81,713	13.8%	0	0.0%	13,619	13.8%	0	0.0%
Martin Luther King, Jr. MEM	3,251,594	-2.7%	0	0.0%	135,483	-2.7%	0	0.0%
Martin Luther King, Jr. NHP	1,159,438	141.0%	0	0.0%	159,764	160.9%	0	0.0%
Martin Van Buren NHS ⁴	17,712	42.4%	0	0.0%	2,103	20.7%	0	0.0%
Mary McLeod Bethune Council House NHS	3,338	-5.6%	0	0.0%	556	-5.6%	0	0.0%

Table 4 (continued). 2024 Recreation Visits / Visitor Days and Non-Recreation Visits / Visitor Days and Percent Change from 2023 by Park.

Park Name	Recreation Visits	Percent Change	Non-Rec Visits	Percent Change	Recreation Visitor Days	Percent Change	Non-Rec Visitor Days	Percent Change
Medgar and Myrlie Evers Home NM	71,554	20.2%	0	0.0%	3,094	-25.8%	0	0.0%
Mesa Verde NP	480,065	-5.0%	11,246	-5.2%	266,984	-9.1%	937	-5.2%
Mill Springs Battlefield NM	8,579	-6.2%	0	0.0%	1,484	-10.1%	0	0.0%
Minidoka NHS	22,025	20.0%	0	0.0%	3,121	19.1%	0	0.0%
Minute Man NHP ⁵	879,316	-12.2%	0	0.0%	109,914	-12.2%	0	0.0%
Minuteman Missile NHS	118,108	2.0%	0	0.0%	7,366	-0.2%	0	0.0%
Mississippi NRR ⁵	256,133	-13.1%	0	0.0%	34,643	-8.4%	0	0.0%
Missouri NRR ⁵	153,521	32.1%	0	0.0%	12,793	32.1%	0	0.0%
Mojave NPRES ^{5,6}	424,864	-64.0%	0	0.0%	217,048	-63.4%	0	0.0%
Monocacy NB	116,520	-11.8%	90	0.0%	20,423	-14.9%	21	0.0%
Montezuma Castle NM	379,967	3.5%	0	0.0%	31,664	3.5%	0	0.0%
Moore's Creek NB	69,079	24.5%	0	0.0%	3,598	11.7%	0	0.0%
Morristown NHP ⁵	208,138	-13.3%	0	0.0%	50,425	-8.8%	0	0.0%
Mount Rainier NP	1,620,006	-3.2%	870,722	2.5%	1,637,817	-6.7%	72,560	2.5%
Mount Rushmore NMEM ^{5,6}	1,850,329	-23.9%	640,791	-23.3%	203,021	-23.9%	17,800	-23.3%
Muir Woods NM	792,494	-2.1%	0	0.0%	88,033	-2.1%	0	0.0%
Natchez NHP ^{4,5}	21,520	-64.8%	0	0.0%	5,860	-59.3%	0	0.0%
Natchez Trace PKWY ⁵	7,364,833	8.5%	9,395,608	0.0%	2,476,073	8.5%	782,967	0.0%
National Capital Parks Central ^{3,5}	1,034,341	-2.2%	0	0.0%	71,140	-4.9%	0	0.0%
National Capital Parks East	1,271,126	1.5%	32,951,529	1.4%	180,642	1.7%	1,778,128	0.5%
National Park of American Samoa	22,567	86.0%	0	0.0%	3,761	86.0%	0	0.0%
Natural Bridges NM	75,680	-9.6%	800	0.0%	48,018	18.6%	33	0.0%
Navajo NM	58,442	32.3%	1,222	-15.5%	13,319	18.6%	25	-15.3%
New Bedford Whaling NHP	18,330	7.6%	0	0.0%	203	-6.2%	0	0.0%
New Orleans Jazz NHP	44,943	11.4%	0	0.0%	6,447	22.0%	0	0.0%

Table 4 (continued). 2024 Recreation Visits / Visitor Days and Non-Recreation Visits / Visitor Days and Percent Change from 2023 by Park.

Park Name	Recreation Visits	Percent Change	Non-Rec Visits	Percent Change	Recreation Visitor Days	Percent Change	Non-Rec Visitor Days	Percent Change
New River Gorge NP & PRES ⁵	1,811,937	6.1%	2,400	0.0%	389,227	5.0%	400	0.0%
Nez Perce NHP	342,924	-9.1%	1,800	0.0%	23,111	-5.4%	15	0.0%
Nicodemus NHS ⁴	7,535	0.6%	0	0.0%	550	-12.0%	0	0.0%
Ninety Six NHS ⁵	101,352	-14.3%	0	0.0%	10,558	-14.3%	0	0.0%
Niobrara NSR	74,387	-1.1%	0	0.0%	47,778	-1.8%	0	0.0%
Noatak NPRES	18,311	-4.2%	8,332	-2.5%	33,076	-5.0%	16,823	-4.4%
North Cascades NP ⁵	16,485	-59.1%	0	0.0%	25,523	-42.4%	0	0.0%
Obed W&SR	261,732	-6.2%	10,800	0.0%	94,759	-5.8%	75	0.0%
Ocmulgee Mounds NHP	141,905	-21.6%	0	0.0%	17,738	-21.6%	0	0.0%
Olympic NP	3,717,267	26.1%	1,086,478	4.0%	1,370,971	6.2%	29,711	5.8%
Oregon Caves NM & PRES	94,016	193.4%	520	0.0%	24,105	179.4%	87	0.0%
Organ Pipe Cactus NM	182,612	-2.1%	197,754	-23.3%	102,441	31.5%	8,240	-23.3%
Ozark NSR ⁵	1,343,779	0.7%	0	0.0%	301,089	-3.5%	0	0.0%
Padre Island NS ⁵	514,722	-6.9%	1,800	0.0%	283,963	-11.1%	1,200	0.0%
Palo Alto Battlefield NHP	178,946	11.5%	0	0.0%	19,528	11.1%	0	0.0%
Paterson Great Falls NHP ⁶	210,741	-24.7%	0	0.0%	30,370	-43.8%	0	0.0%
Pea Ridge NMP ⁶	102,621	-40.2%	0	0.0%	17,104	-40.2%	0	0.0%
Pearl Harbor NMEM	1,588,798	-6.1%	0	0.0%	397,200	-6.1%	0	0.0%
Pecos NHP	46,726	-7.9%	0	0.0%	4,973	-7.9%	0	0.0%
Pennsylvania Avenue NHS	141,840	2.7%	0	0.0%	3,901	2.7%	0	0.0%
Perry's Victory & Intl. Peace MEM	91,302	-10.3%	0	0.0%	8,517	-8.7%	0	0.0%
Petersburg NB	191,623	4.9%	423,798	4.7%	16,431	6.5%	8,829	4.7%
Petrified Forest NP	559,254	7.4%	120	0.0%	120,287	6.9%	10	0.0%
Petroglyph NM ⁴	354,534	12.7%	0	0.0%	59,089	12.7%	0	0.0%
Pictured Rocks NL	953,052	4.6%	1,850	-41.1%	599,775	2.2%	46	-93.3%

Table 4 (continued). 2024 Recreation Visits / Visitor Days and Non-Recreation Visits / Visitor Days and Percent Change from 2023 by Park.

Park Name	Recreation Visits	Percent Change	Non-Rec Visits	Percent Change	Recreation Visitor Days	Percent Change	Non-Rec Visitor Days	Percent Change
Pinnacles NP	354,076	3.8%	0	0.0%	186,658	16.3%	0	0.0%
Pipe Spring NM	24,530	2.1%	404	0.0%	3,066	2.1%	75	0.0%
Pipestone NM	83,033	-0.2%	0	0.0%	17,298	-0.2%	0	0.0%
Piscataway Park ⁴	334,260	18.3%	0	0.0%	51,203	17.1%	0	0.0%
Point Reyes NS	2,371,800	4.6%	25,788	0.0%	922,230	4.8%	2,149	0.0%
Port Chicago Naval Magazine NMEM	930	21.7%	0	0.0%	155	21.7%	0	0.0%
President W.J. Clinton Birthplace Home NHS	6,215	23.7%	0	0.0%	518	23.7%	0	0.0%
President's Park	915,636	2.1%	0	0.0%	109,336	2.1%	0	0.0%
Prince William Forest Park ⁵	355,196	20.1%	120	0.0%	302,916	26.8%	20	0.0%
Pullman NHP	31,961	9.4%	0	0.0%	1,332	9.4%	0	0.0%
Pu'uhonua o Hōnaunau NHP	454,268	33.0%	0	0.0%	37,856	33.0%	0	0.0%
Pu'ukoholā Heiau NHS	27,507	18.6%	234,670	-0.9%	1,146	18.6%	3,258	-0.9%
Rainbow Bridge NM	17,488	10,498.8%	0	0.0%	1,457	10,498.8%	0	0.0%
Reconstruction Era NHP	23,378	-1.7%	2,897	0.1%	721	-3.1%	302	0.1%
Redwood NP	622,883	52.3%	10,824	0.0%	206,449	39.7%	227	0.0%
Richmond NBP ⁵	156,538	-7.5%	125,379	-13.7%	21,799	-7.7%	2,612	-13.7%
Rio Grande W&SR ⁵	172	-42.7%	0	0.0%	2,184	-47.7%	0	0.0%
River Raisin NBP	240,556	-4.8%	0	0.0%	40,093	-4.8%	0	0.0%
Rock Creek Park ⁴	1,917,170	5.5%	12,421,269	0.0%	180,660	21.3%	517,553	0.0%
Rocky Mountain NP ⁴	4,154,349	0.9%	8,750	0.0%	2,317,606	3.6%	2,188	0.0%
Roger Williams NMEM	43,242	14.7%	52,698	14.6%	4,551	21.0%	351	14.5%
Rosie the Riveter WWII Home Front NHP	34,913	-12.5%	0	0.0%	8,728	-12.5%	0	0.0%
Ross Lake NRA ⁵	971,173	10.1%	720	0.0%	295,926	9.8%	60	0.0%

Table 4 (continued). 2024 Recreation Visits / Visitor Days and Non-Recreation Visits / Visitor Days and Percent Change from 2023 by Park.

Park Name	Recreation Visits	Percent Change	Non-Rec Visits	Percent Change	Recreation Visitor Days	Percent Change	Non-Rec Visitor Days	Percent Change
Russell Cave NM	9,261	6.7%	0	0.0%	860	-1.8%	0	0.0%
Sagamore Hill NHS	130,259	-0.8%	0	0.0%	27,137	-0.8%	0	0.0%
Saguaro NP	946,369	-6.4%	4,501,598	2.4%	141,564	-10.0%	93,783	2.4%
Saint Croix Island IHS	13,508	8.7%	0	0.0%	1,407	8.7%	0	0.0%
Saint Croix NSR	900,828	11.7%	0	0.0%	683,352	4.6%	0	0.0%
Saint Paul's Church NHS	12,135	4.5%	250	4.2%	1,419	6.3%	16	11.9%
Saint-Gaudens NHP	26,685	-12.6%	0	0.0%	4,171	-11.8%	0	0.0%
Salem Maritime NHS ⁵	488,831	-10.3%	0	0.0%	22,704	-3.1%	0	0.0%
Salinas Pueblo Missions NM	38,106	-3.7%	0	0.0%	6,226	-5.7%	0	0.0%
Salt River Bay NHP & EPRES	13,185	-4.0%	0	0.0%	2,822	-1.6%	0	0.0%
San Antonio Missions NHP	1,278,777	8.3%	0	0.0%	151,844	14.5%	0	0.0%
San Francisco Maritime NHP ⁵	2,535,134	43.3%	0	0.0%	199,141	41.9%	0	0.0%
San Juan Island NHP	405,925	-11.4%	74,023	0.0%	56,309	-9.7%	1,542	0.0%
San Juan NHS	1,329,728	1.1%	0	0.0%	210,223	1.5%	0	0.0%
Sand Creek Massacre NHS	6,401	9.3%	0	0.0%	1,025	9.3%	0	0.0%
Santa Monica Mountains NRA ⁵	639,745	-15.8%	37,308	-24.9%	92,666	-28.4%	1,599	-24.3%
Saratoga NHP	116,537	14.3%	77,605	-0.3%	23,925	14.3%	518	-0.3%
Saugus Iron Works NHS	51,921	25.7%	23,633	12.6%	6,490	25.7%	197	12.6%
Scotts Bluff NM ⁵	183,915	5.5%	0	0.0%	29,120	5.5%	0	0.0%
Sequoia NP ⁴	1,309,573	33.6%	13,743	-0.2%	3,433,125	27.9%	4,581	-0.2%
Shenandoah NP ⁵	1,720,211	9.1%	10,962	0.0%	870,952	-4.2%	229	0.0%
Shiloh NMP	386,152	3.9%	169,205	-5.0%	44,592	5.3%	2,820	-5.0%
Sitka NHP	309,327	69.9%	0	0.0%	15,569	69.7%	0	0.0%
Sleeping Bear Dunes NL	1,670,025	4.5%	0	0.0%	757,066	3.4%	0	0.0%
Springfield Armory NHS	15,925	1.4%	0	0.0%	2,654	1.3%	0	0.0%

Table 4 (continued). 2024 Recreation Visits / Visitor Days and Non-Recreation Visits / Visitor Days and Percent Change from 2023 by Park.

Park Name	Recreation Visits	Percent Change	Non-Rec Visits	Percent Change	Recreation Visitor Days	Percent Change	Non-Rec Visitor Days	Percent Change
Statue of Liberty NM	3,722,029	-0.5%	0	0.0%	1,395,761	-0.5%	0	0.0%
Ste. Geneviève NHP ^{2,5}	23,893	-	180	-	832	-	105	-
Steamtown NHS	60,243	3.2%	11,592	0.0%	7,981	7.4%	483	0.0%
Stones River NB	446,160	31.5%	1,440	-1.4%	52,889	41.7%	20	-8.0%
Stonewall NM	2,302,641	176.5%	4,813	6.7%	175,056	190.3%	1,604	6.7%
Sunset Crater Volcano NM ⁵	73,260	-10.1%	12,000	0.0%	7,631	-10.1%	333	0.0%
Tallgrass Prairie NPRES	29,955	4.1%	0	0.0%	4,993	4.1%	0	0.0%
Thaddeus Kosciuszko NMEM	2,336	5.3%	0	0.0%	49	5.0%	0	0.0%
Theodore Roosevelt Birthplace NHS	25,086	26.1%	123	92.2%	2,371	33.8%	5	80.0%
Theodore Roosevelt Inaugural NHS	30,141	30.1%	0	0.0%	4,944	44.0%	0	0.0%
Theodore Roosevelt Island	174,954	14.3%	0	0.0%	26,243	14.3%	0	0.0%
Theodore Roosevelt NP	732,951	-1.9%	6,578	0.0%	236,046	6.4%	181	0.0%
Thomas Edison NHP	34,031	1.6%	7,937	-51.6%	3,260	1.5%	99	-51.6%
Thomas Jefferson MEM	2,915,319	-2.3%	0	0.0%	121,472	-2.3%	0	0.0%
Thomas Stone NHS	4,538	-21.2%	0	0.0%	189	-21.1%	0	0.0%
Timpanogos Cave NM ⁵	114,034	-5.5%	0	0.0%	19,950	0.3%	0	0.0%
Timucuan EHP	997,136	3.9%	0	0.0%	192,767	-10.2%	0	0.0%
Tonto NM	30,840	-1.2%	0	0.0%	4,522	-4.7%	0	0.0%
Tule Lake NM	3,810	-	0	-	337	-	0	-
Tule Springs Fossil Beds NM	60,431	0.5%	0	0.0%	7,554	0.5%	0	0.0%
Tumacácori NHP	35,256	-6.9%	0	0.0%	4,407	-25.5%	0	0.0%
Tuskegee Airmen NHS	28,474	28.9%	0	0.0%	3,559	28.9%	0	0.0%
Tuskegee Institute NHS ⁵	10,037	22.0%	0	0.0%	440	-8.7%	0	0.0%
Tuzigoot NM	108,283	5.2%	0	0.0%	9,024	5.2%	0	0.0%
Ulysses S. Grant NHS	44,732	35.3%	0	0.0%	5,591	35.3%	0	0.0%

Table 4 (continued). 2024 Recreation Visits / Visitor Days and Non-Recreation Visits / Visitor Days and Percent Change from 2023 by Park.

Park Name	Recreation Visits	Percent Change	Non-Rec Visits	Percent Change	Recreation Visitor Days	Percent Change	Non-Rec Visitor Days	Percent Change
Upper Delaware S&RR ⁵	377,061	15.2%	180,270	-11.0%	90,348	1.8%	1,233	-10.8%
Valles Caldera NPRES	82,111	7.9%	763	-14.1%	21,235	9.2%	509	-16.9%
Valley Forge NHP	1,866,480	-0.7%	0	0.0%	311,080	-0.7%	0	0.0%
Vanderbilt Mansion NHS	406,077	20.0%	0	0.0%	39,786	16.7%	0	0.0%
Vicksburg NMP	403,332	17.6%	0	0.0%	74,748	18.2%	0	0.0%
Vietnam Veterans MEM	5,295,711	5.1%	0	0.0%	220,655	5.1%	0	0.0%
Virgin Islands NP	423,029	23.1%	217,556	-5.9%	216,802	23.1%	5,637	-3.7%
Voyageurs NP ^{5,6}	199,030	-9.9%	0	0.0%	91,426	16.1%	0	0.0%
Waco Mammoth NM	111,961	14.1%	56	-80.0%	11,922	17.4%	5	-80.0%
Walnut Canyon NM	187,205	22.7%	480	0.0%	20,281	22.7%	20	0.0%
War in the Pacific NHP ⁵	373,974	-10.0%	794	138.4%	31,348	-11.1%	33	135.7%
Washington Monument	247,208	-0.6%	0	0.0%	20,601	-0.6%	0	0.0%
Washita Battlefield NHS	12,369	3.9%	0	0.0%	2,062	3.9%	0	0.0%
Weir Farm NHP	34,246	-5.7%	0	0.0%	5,246	-4.7%	0	0.0%
Whiskeytown NRA ⁵	812,244	-11.7%	5,875	-1.8%	241,398	-13.7%	940	-0.5%
White House	517,030	-6.6%	0	0.0%	28,117	-31.2%	0	0.0%
White Sands NP ⁵	702,236	-3.7%	0	0.0%	116,034	-2.3%	0	0.0%
Whitman Mission NHS ⁴	61,331	29.9%	0	-100.0%	5,111	29.9%	0	-100.0%
William Howard Taft NHS	31,118	1.2%	0	0.0%	2,593	1.2%	0	0.0%
Wilson's Creek NB	357,805	13.0%	0	0.0%	59,634	13.0%	0	0.0%
Wind Cave NP ⁵	489,399	-17.4%	207,405	-12.4%	115,483	-24.1%	5,704	-12.4%
Wolf Trap NP for the Performing Arts	447,863	-8.4%	0	0.0%	149,288	-8.4%	0	0.0%
Women's Rights NHP	33,691	-6.2%	1,344	0.0%	2,927	-3.5%	56	0.0%
World War I MEM	1,084,897	-0.7%	0	0.0%	45,204	-0.7%	0	0.0%
World War II MEM	5,160,769	0.8%	0	0.0%	215,032	0.8%	0	0.0%

Table 4 (continued). 2024 Recreation Visits / Visitor Days and Non-Recreation Visits / Visitor Days and Percent Change from 2023 by Park.

Park Name	Recreation Visits	Percent Change	Non-Rec Visits	Percent Change	Recreation Visitor Days	Percent Change	Non-Rec Visitor Days	Percent Change
Wrangell-St. Elias NP & PRES	81,670	4.3%	0	0.0%	313,073	4.3%	0	0.0%
Wright Brothers NMEM	406,593	-4.0%	2,190	0.0%	33,883	-4.0%	91	0.0%
Wupatki NM ⁶	220,205	2.1%	6,513	-0.3%	73,402	2.1%	326	-0.3%
Yellowstone NP ⁴	4,744,353	5.4%	1,245,434	-4.7%	7,270,176	6.8%	58,837	-6.2%
Yosemite NP	4,121,807	5.8%	163,922	2.3%	5,016,295	15.6%	355,377	0.4%
Yukon-Charley Rivers NPRES	1,700	68.2%	0	0.0%	24,083	322.6%	0	0.0%
Zion NP ⁵	4,946,592	7.0%	21,900	0.0%	2,607,505	6.2%	456	0.0%
NPS Total	331,863,358	2.0%	171,767,942	0.2%	116,323,336	-1.0%	7,562,372	0.4%

Average Recreation Visits per Day to NPS Units

Visit volume to parks varies throughout the year. The service-wide average number of visits per day, broken down by month, is shown in Figure 5. Average visits per day were up for all months except January, July, September, and October. March had the largest percent increase at 13.1% most likely due to mild weather across the country in March 2024, compared to strong winter storms in March 2023. Unlike previous years in which July had the highest average visits per day, June 2024 had the highest average visits per day at 1,374,661 (6.4% increase over 2023). The July 2024 dip may be due to unusually high temperatures in July 2024 suppressing some outdoor recreation.

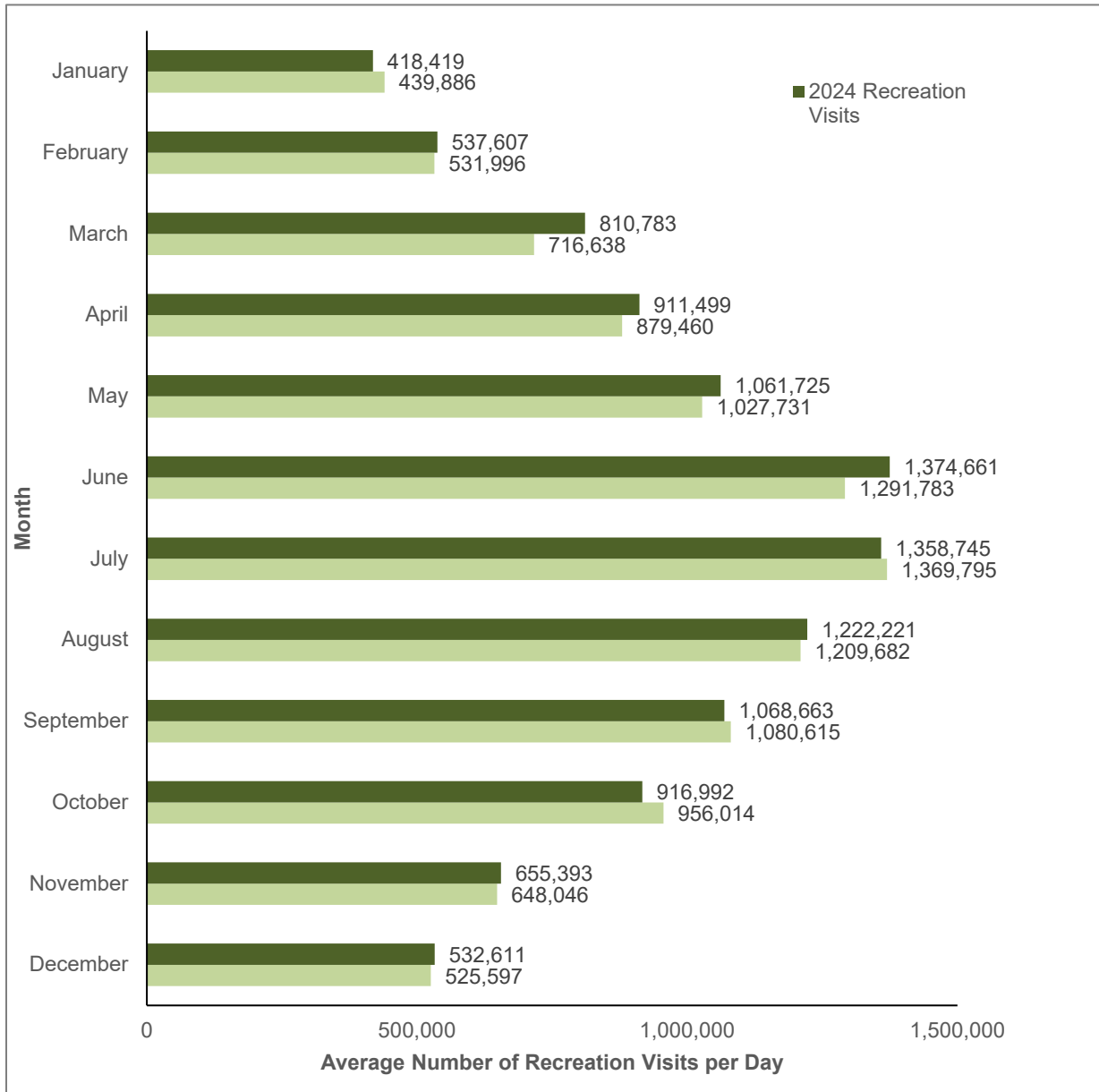


Figure 5. Service-wide Average Number of Recreation Visits per Day by Month, 2023 to 2024.
NPS

Overnight Stays

In addition to visits and hours, the National Park Service tracks the number of overnight stays, which are defined as one night within a park by a visitor. One visitor staying for 10 nights or 10 visitors staying for one night apiece equal 10 overnight stays. Table 5 shows the number of overnight stays by park in concessioner operated lodging, concessioner operated campgrounds, NPS campgrounds (separated by tent overnights and RV overnights), backcountry, and miscellaneous locations (any location or accommodation not otherwise defined such as sleeping aboard boats or stays in designated group campsites). The number of non-recreation overnight stays, such as leaseholders, commercial fishermen in park waters, and government personnel other than NPS employees, are also included. In 2024, parks recorded 13,412,294 overnight stays, which is a 2.6% increase from 2023. Figure 6 shows the trend for overnight stays by category for the most recent 25 years (2000–2024). Superscript references can be found in the Endnotes.

Table 5. 2024 Overnight Stays by Park.

Park	Concession Operated Lodging	Concession Operated Campground	NPS Campground Tent	NPS Campground RV	Backcountry	Miscellaneous	Non-Recreation	Total ^A
Acadia NP	0	1,667	142,739	52,950	1,175	10,208	0	208,739
Alagnak WR	0	0	0	0	380	0	157	537
Amistad NRA ⁵	0	0	0	7,241	0	685	0	7,924
Aniakchak NM & PRES ⁴	0	0	0	0	396	0	461	857
Antietam NB	0	0	0	0	0	278	0	278
Apostle Islands NL ⁵	0	0	0	0	11,033	5,064	0	16,097
Arches NP ⁴	0	0	14,588	25,619	140	8,610	0	48,956
Assateague Island NS	0	0	39,801	30,910	1,133	8,313	0	80,158
Badlands NP ⁵	11,075	22,844	3,156	922	1,441	0	0	39,438
Bandelier NM ⁵	0	0	7,971	10,947	463	6,920	0	26,301
Bering Land Bridge NPRES ⁵	0	0	0	0	1,123	0	484	1,607
Big Bend NP	22,479	3,661	69,606	27,860	48,597	19,619	0	191,822
Big Cypress NPRES ^{4,5}	0	0	1,499	25,018	2,256	231	0	29,004
Big South Fork NRRRA ⁵	1,409	0	14,630	30,693	9,007	3,439	0	59,178

^A Total overnight stays may vary from sum of categories due to rounding in the underlying calculations.

Table 5 (continued). 2024 Overnight Stays by Park.

Park	Concession Operated Lodging	Concession Operated Campground	NPS Campground Tent	NPS Campground RV	Backcountry	Miscellaneous	Non- Recreation	Total ^A
Big Thicket NPRES	0	0	0	0	966	0	0	966
Bighorn Canyon NRA ⁵	0	0	0	0	405	9,405	0	9,810
Biscayne NP	0	0	393	0	0	1,415	0	1,808
Black Canyon of the Gunnison NP ⁵	0	0	16,795	12,577	1,273	0	0	30,646
Blue Ridge PKWY ^{4,5}	24,249	0	48,963	32,222	307	0	0	105,741
Bryce Canyon NP	49,773	0	45,003	48,168	2,128	1,338	0	146,411
Buck Island Reef NM ⁵	0	0	0	0	0	3,840	0	3,840
Buffalo NR	3,392	0	64,871	36,059	18,422	29,369	0	152,117
Canaveral NS ⁵	0	0	0	0	4,118	0	0	4,118
Canyon de Chelly NM	16,402	11,976	0	0	501	0	0	28,879
Canyonlands NP	0	0	8,509	10,209	67,957	1,911	0	88,585
Cape Cod NS	0	0	0	0	0	7,221	0	7,221
Cape Hatteras NS	0	0	69,827	88,926	0	3,662	28	162,443
Cape Krusenstern NM	0	0	0	0	5,972	0	5,726	11,698
Cape Lookout NS ^{4,5}	0	0	0	0	21,380	24,683	0	46,063
Capitol Reef NP ⁵	0	0	25,833	29,888	2,298	3,142	0	61,161
Catoctin Mountain Park	0	0	9,209	465	687	22,270	0	32,631
Cedar Breaks NM	0	0	2,240	5,473	0	0	0	7,713
Chaco Culture NHP ⁵	0	0	9,146	7,686	0	1,234	0	18,066
Channel Islands NP ⁵	0	0	0	0	53,974	45,077	7,852	106,900
Chesapeake & Ohio Canal NHP ⁵	0	0	15,605	1,273	0	14,523	0	31,401
Chickamauga & Chattanooga NMP	0	0	0	0	0	2,453	0	2,453

^A Total overnight stays may vary from sum of categories due to rounding in the underlying calculations.

Table 5 (continued). 2024 Overnight Stays by Park.

Park	Concession Operated Lodging	Concession Operated Campground	NPS Campground Tent	NPS Campground RV	Backcountry	Miscellaneous	Non- Recreation	Total ^A
Chickasaw NRA ⁵	0	0	31,708	23,591	0	12,505	0	67,804
Chiricahua NM ⁵	0	0	8,835	4,978	0	1,857	0	15,670
City of Rocks NRES	0	0	0	0	53	0	0	53
Colorado NM ⁴	0	0	13,775	13,635	107	0	0	27,519
Congaree NP	0	0	7,915	0	745	3,955	0	12,615
Cowpens NB ⁵	0	0	0	0	0	118	0	118
Crater Lake NP ⁵	31,394	38,144	0	0	1,234	0	0	70,772
Craters of the Moon NM & PRES	0	0	4,057	13,652	155	0	0	17,866
Cumberland Gap NHP ⁵	0	0	6,789	19,748	569	1,776	0	28,882
Cumberland Island NS ⁵	0	0	16,559	0	2,520	0	0	19,079
Curecanti NRA	0	0	16,000	36,992	375	395	0	53,762
Cuyahoga Valley NP ⁵	5,350	0	0	0	0	3,332	0	8,682
Death Valley NP ⁵	27,282	2,638	82,598	87,760	8,856	476	0	209,610
Delaware Water Gap NRA	0	25,934	0	0	12,041	17,092	0	55,067
Denali NP & PRES ⁵	0	17,440	0	0	29,405	0	0	46,845
Devils Tower NM ⁴	0	0	2,260	5,950	0	0	0	8,210
Dinosaur NM	0	0	20,735	16,251	32,371	3,910	0	73,267
Dry Tortugas NP	0	0	5,536	0	0	6,993	1,710	14,239
El Morro NM	0	0	915	1,561	0	0	0	2,476
Everglades NP ⁵	0	29,377	0	0	16,367	954	0	46,698
Fire Island NS ^{4,6}	429	6,355	0	0	2,739	614	0	10,137
Fort Necessity NB	0	0	0	0	0	716	0	716
Fort Pulaski NM ⁵	0	0	0	0	0	15	0	15

^A Total overnight stays may vary from sum of categories due to rounding in the underlying calculations.

Table 5 (continued). 2024 Overnight Stays by Park.

Park	Concession Operated Lodging	Concession Operated Campground	NPS Campground Tent	NPS Campground RV	Backcountry	Miscellaneous	Non- Recreation	Total ^A
Fort Sumter and Fort Moultrie NHP	0	0	0	0	0	106	0	106
Gates of the Arctic NP & PRES	0	0	0	0	3,577	0	0	3,577
Gateway NRA	0	0	2,891	0	0	4,568	0	7,459
Gauley River NRA	0	0	4,693	4,409	0	0	0	9,102
Gettysburg NMP ⁵	0	0	0	0	0	417	0	417
Glacier Bay NP & PRES	13,748	0	773	0	3,710	12,268	6,820	37,321
Glacier NP ⁵	118,588	0	126,200	129,858	34,828	11,309	0	420,784
Glen Canyon NRA ⁵	68,474	28,827	3,431	10,035	2,513	150,376	0	263,657
Golden Gate NRA	61,535	0	4,760	0	1,392	8,907	0	76,594
Grand Canyon NP ⁵	629,148	74,657	105,154	60,069	291,787	15,097	0	1,175,912
Grand Portage NM ⁴	0	0	0	0	62	0	0	62
Grand Teton NP	196,568	355,025	49	5	38,830	0	0	590,477
Great Basin NP	0	0	21,685	20,408	460	800	0	43,353
Great Sand Dunes NP & PRES ⁴	0	0	23,227	34,788	9,775	10,967	0	157,514
Great Smoky Mountains NP ^{4,5}	10,657	0	205,754	176,473	71,019	37,899	0	501,802
Greenbelt Park	0	0	22,950	11,463	0	6,464	0	40,877
Guadalupe Mountains NP ⁵	0	0	16,501	8,432	2,671	5,167	0	32,771
Guilford Courthouse NMP	0	0	0	0	0	128	0	128
Gulf Islands NS ⁵	0	0	51,958	159,502	0	6,001	0	217,461
Haleakalā NP ⁵	0	0	20,297	0	4,874	5,410	0	30,581
Hawai'i Volcanoes NP	31,137	5,413	1,050	57	5,558	59,547	0	102,762
Hot Springs NP	0	0	768	43,157	0	0	0	43,925
Hovenweep NM	0	0	1,094	1,705	0	0	0	2,799

^A Total overnight stays may vary from sum of categories due to rounding in the underlying calculations.

Table 5 (continued). 2024 Overnight Stays by Park.

Park	Concession Operated Lodging	Concession Operated Campground	NPS Campground Tent	NPS Campground RV	Backcountry	Miscellaneous	Non- Recreation	Total ^A
Indiana Dunes NP ⁵	0	0	23,247	13,060	0	0	0	36,307
Isle Royale NP ⁴	11,468	193	6,436	0	29,259	18,144	1,437	66,937
John D. Rockefeller, Jr. MEM PKWY	20,093	21,545	0	0	0	0	0	41,638
Joshua Tree NP	0	0	194,464	111,471	16,604	71,818	0	394,357
Katahdin Woods and Waters NM	0	0	656	0	298	0	0	954
Katmai NP & PRES ⁴	5,190	0	5,921	0	3,766	0	1,498	16,375
Kenai Fjords NP	0	0	732	0	88	717	0	1,537
Kings Canyon NP ⁴	33,935	0	59,081	25,850	10,361	1,302	0	130,531
Kings Mountain NMP ⁵	0	0	0	0	25	0	0	25
Kobuk Valley NP	0	0	0	0	6,301	0	6,856	13,157
Lake Chelan NRA ⁵	5,818	0	3,502	0	667	0	0	9,987
Lake Clark NP & PRES ⁴	0	0	0	0	7,760	372	3,035	11,167
Lake Mead NRA	8,674	184,209	46,232	58,841	29,848	46,986	0	374,786
Lake Meredith NRA ^{4,5}	0	0	10,819	49,097	0	8,142	0	68,062
Lake Roosevelt NRA	6,223	3,641	49,658	59,198	2,755	4,206	0	125,684
Lassen Volcanic NP ⁵	0	0	42,267	23,775	1,130	9,099	0	76,271
Lava Beds NM	0	0	4,799	2,826	2	381	0	8,006
Mammoth Cave NP	16,879	0	55,032	22,459	4,562	8,074	0	107,006
Mesa Verde NP	17,518	0	18,141	22,206	0	110	0	57,973
Mojave NPRES ^{5,6}	0	0	1,355	1,230	0	2,032	0	4,617
Mount Rainier NP	44,433	0	52,110	29,983	53,823	531	0	180,881
Natchez Trace PKWY ⁵	0	0	9,288	13,761	0	5	0	23,054
Natural Bridges NM	0	0	6,907	6,041	0	0	0	12,949

^A Total overnight stays may vary from sum of categories due to rounding in the underlying calculations.

Table 5 (continued). 2024 Overnight Stays by Park.

Park	Concession Operated Lodging	Concession Operated Campground	NPS Campground Tent	NPS Campground RV	Backcountry	Miscellaneous	Non-Recreation	Total ^A
Navajo NM	0	0	2,134	2,509	15	54	0	4,712
New River Gorge NP & PRES ⁵	0	0	17,157	10,516	12,609	3,486	0	43,768
Noatak NPRES	0	0	0	0	5,354	0	5,634	10,988
North Cascades NP ⁵	0	0	0	0	12,948	0	0	12,948
Obed W&SR	0	0	4,029	0	717	0	0	4,746
Olympic NP	88,217	12,853	130,274	92,181	124,736	89	0	448,350
Oregon Caves NM & PRES	0	0	357	94	0	0	0	451
Organ Pipe Cactus NM	0	0	16,339	57,439	47	494	195	74,515
Ozark NSR ⁵	0	0	49,488	30,900	13,736	24,560	0	118,683
Padre Island NS ⁵	0	0	7,190	25,054	13,617	467	0	46,330
Perry's Victory & Intl. Peace MEM	0	0	0	0	0	36	0	36
Petrified Forest NP	0	0	0	0	709	0	0	709
Pictured Rocks NL	0	0	19,087	10,634	27,020	0	0	56,741
Pinnacles NP	0	43,913	0	0	0	0	0	43,913
Point Reyes NS	6,883	831	0	0	57,235	0	0	64,949
Prince William Forest Park ⁵	0	22,297	17,135	2,063	669	54,200	0	96,364
Redwood NP	0	0	5,964	0	12,308	1,520	0	19,792
Rio Grande W&SR ⁵	0	0	0	0	1,221	0	0	1,221
Rocky Mountain NP ⁴	0	0	104,513	32,753	33,454	9,603	0	180,323
Ross Lake NRA ⁵	15,079	0	50,349	21,141	18,067	2,861	0	107,498
Saguaro NP	0	0	0	0	2,795	0	0	2,795
Saint Croix NSR	0	0	0	0	96,660	0	0	96,660
San Francisco Maritime NHP ⁵	0	0	0	0	0	153	0	153
Sequoia NP ⁴	61,465	0	82,036	62,752	23,439	3	0	229,694

^A Total overnight stays may vary from sum of categories due to rounding in the underlying calculations.

Table 5 (continued). 2024 Overnight Stays by Park.

Park	Concession Operated Lodging	Concession Operated Campground	NPS Campground Tent	NPS Campground RV	Backcountry	Miscellaneous	Non- Recreation	Total ^A
Shenandoah NP ⁵	46,496	0	127,314	65,937	28,544	560	0	268,851
Sleeping Bear Dunes NL	0	0	57,456	68,065	15,685	374	0	141,580
Theodore Roosevelt NP	0	0	14,211	22,108	653	2,781	0	39,753
Valles Caldera NPRES	0	0	0	0	176	606	0	782
Virgin Islands NP	11,471	15,331	0	0	0	20,751	2,305	49,858
Voyageurs NP ^{5,6}	4,216	0	0	0	58,389	14,246	0	76,851
Whiskeytown NRA ⁵	0	10,524	7,634	2,342	12	7,494	0	28,006
Wind Cave NP ⁵	0	0	3,950	5,050	342	411	0	9,753
Wrangell-St. Elias NP & PRES	0	0	0	0	220	22,206	0	22,426
Yellowstone NP ⁴	684,474	425,948	63,512	46,755	37,280	4,943	0	1,262,912
Yosemite NP	698,400	0	356,089	211,216	131,571	16,528	0	1,413,804
Yukon-Charley Rivers NPRES	0	0	0	0	11,900	0	0	11,900
Zion NP ⁵	97,075	0	94,830	94,744	10,870	38,589	0	336,108
NPS Total	3,207,096	1,365,243	3,262,996	2,673,636	1,756,372	1,023,983	44,198	13,412,294

^A Total overnight stays may vary from sum of categories due to rounding in the underlying calculations.

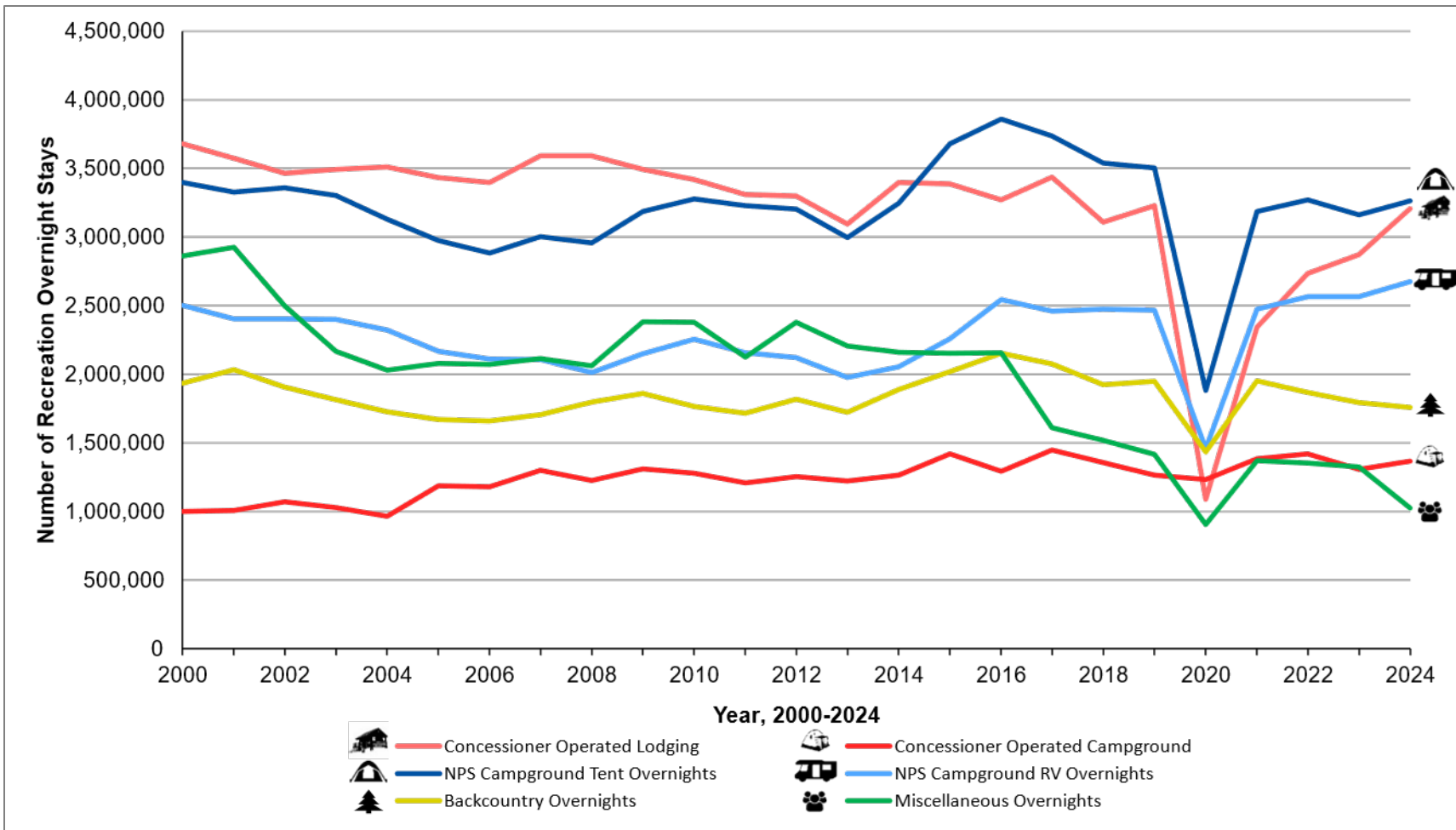


Figure 6. Recreation Overnight Stays by Category and Year, 2000–2024.

NPS

Related and Non-Reporting Areas

Related areas are linked in importance and purpose to places managed directly by the NPS, but do not report official NPS visitor use statistics. A list of related areas can be found online at [National Park System \(U.S. National Park Service\) \(nps.gov\)](https://www.nps.gov).

In addition to the related areas that do not report visitor use, some units of the National Park System were unable to report 2024 visitor use statistics for a variety of reasons such as joint administration, non-federal land ownership, or new parks that lack staff and facilities for management of visitor statistics. Superscript references can be found in the Endnotes.

National Park System Areas Not Reporting Visitor Use

- Appalachian NST
- Birmingham Civil Rights NM
- Blackstone River Valley NHP
- Blackwell School NHS ¹
- Brices Cross Roads NBS
- Carlisle Federal Indian Boarding School NM ¹
- Castle Mountains NM
- Cedar Creek and Belle Grove NHP
- Constitution Gardens ³
- Ebey's Landing NHR
- Fort Monroe NM
- Frances Perkins NM ¹
- Freedom Riders NM
- Great Egg Harbor NS & RR
- Harriet Tubman NHP
- Hohokam Pima NM
- Honouliuli NHS
- Middle Delaware NSR
- Natchez Trace NST
- National Mall and Memorial Parks
- New England NST
- New Philadelphia NHS
- North Country NST

- Potomac Heritage NST
- Poverty Point NM
- Springfield 1908 Race Riot NM¹
- Tupelo NB
- Virgin Islands Coral Reef NM
- Yucca House NM

Recreation Visits / Visitor Days by State and U.S. Territory

Table 6 documents the number of recreation visits and visitor days for all parks that reported visitor use in 2024 by state or territory and displays the percent change from 2023. It is an expansion of Table 2 (2024 Recreation Visits by State and U.S. Territory Compared to 2023) and organizes recreation data in Table 4 (2024 Recreation Visits / Visitor Days and Non-Recreation Visits / Visitor Days by Park and Percent Change from 2023) by state. Superscript references can be found in the Endnotes.

Table 6. 2024 Recreation Visits / Visitor Days and Percent Change from 2023 by State and U.S. Territory.

State	Park	Recreation Visits ^A	Percent Change ^B	Recreation Visitor Days ^A	Percent Change ^B
Alabama	Horseshoe Bend NMP	64,063	-11.9%	15,074	-15.0%
	Little River Canyon NPRES ⁵	763,209	8.9%	153,069	5.4%
	Natchez Trace PKWY ⁵	515,538	8.5%	173,325	8.5%
	Russell Cave NM	9,261	6.7%	860	-1.7%
	Tuskegee Airmen NHS	28,474	28.9%	3,559	28.9%
	Tuskegee Institute NHS ⁵	10,037	22.0%	439	-8.7%
	Subtotal Alabama	1,390,582	8.0%	346,326	6.0%
Alaska	Alagnak WR	278	20.3%	795	123.3%
	Aniakchak NM & PRES ⁴	191	-4.0%	771	26.0%
	Bering Land Bridge NPRES ⁵	2,642	0.0%	2,906	0.0%
	Cape Krusenstern NM	17,736	-0.5%	16,105	-1.5%
	Denali NP & PRES ⁵	466,227	-6.5%	468,584	-6.0%
	Gates of the Arctic NP & PRES	11,907	7.8%	7,611	-9.8%
	Glacier Bay NP & PRES	736,282	4.6%	774,047	4.7%
	Katmai NP & PRES ⁴	36,230	7.3%	48,472	-4.6%
	Kenai Fjords NP	419,468	8.2%	111,645	8.3%
	Klondike Gold Rush NHP Alaska ^{3,5}	1,336,008	4.0%	462,102	8.3%

^A Total of parks by state may not equal state subtotals due to rounding in the underlying calculations.

^B Percents will not add to state subtotals because each row is a separate percent change by park.

Table 6 (continued). 2024 Recreation Visits / Visitor Days and Percent Change from 2023 by State and U.S. Territory.

State	Park	Recreation Visits ^A	Percent Change ^B	Recreation Visitor Days ^A	Percent Change ^B
Alaska (continued)	Kobuk Valley NP	17,233	-2.2%	17,936	-4.8%
	Lake Clark NP & PRES ⁴	18,505	10.6%	17,992	51.7%
	Noatak NPRES	18,311	-4.2%	33,076	-5.0%
	Sitka NHP	309,327	69.9%	15,568	69.7%
	Wrangell-St. Elias NP & PRES	81,670	4.3%	313,072	4.3%
	Yukon-Charley Rivers NPRES	1,700	68.2%	24,083	322.7%
	Subtotal Alaska	3,473,715	6.7%	2,314,765	3.9%
American Samoa	National Park of American Samoa	22,567	86.0%	3,761	86.0%
	Subtotal American Samoa	22,567	86.0%	3,761	86.0%
Arizona	Canyon de Chelly NM	387,433	16.2%	222,595	15.2%
	Casa Grande Ruins NM	104,429	-6.3%	11,853	-6.2%
	Chiricahua NM ⁵	71,390	14.1%	35,766	3.8%
	Coronado NMEM	164,426	17.4%	13,097	14.1%
	Fort Bowie NHS	8,483	1.8%	1,423	1.8%
	Glen Canyon NRA ⁵	1,142,900	0.2%	391,254	-15.4%
	Grand Canyon NP ⁵	4,919,163	3.9%	6,423,732	4.1%
	Hubbell Trading Post NHS	46,419	-14.3%	1,998	-14.4%
	Lake Mead NRA	1,603,215	10.6%	970,982	8.8%
	Montezuma Castle NM	379,967	3.5%	31,663	3.5%
	Navajo NM	58,442	32.3%	13,318	18.6%
	Organ Pipe Cactus NM	182,612	-2.1%	102,440	31.5%
	Petrified Forest NP	559,254	7.4%	120,287	6.9%
	Pipe Spring NM	24,530	2.1%	3,066	2.2%

^A Total of parks by state may not equal state subtotals due to rounding in the underlying calculations.

^B Percents will not add to state subtotals because each row is a separate percent change by park.

Table 6 (continued). 2024 Recreation Visits / Visitor Days and Percent Change from 2023 by State and U.S. Territory.

State	Park	Recreation Visits ^A	Percent Change ^B	Recreation Visitor Days ^A	Percent Change ^B
Arizona (continued)	Saguaro NP	946,369	-6.4%	141,564	-10.0%
	Sunset Crater Volcano NM ⁵	73,260	-10.1%	7,631	-10.1%
	Tonto NM	30,840	-1.2%	4,521	-4.7%
	Tumacácori NHP	35,256	-6.9%	4,407	-25.5%
	Tuzigoot NM	108,283	5.2%	9,023	5.2%
	Walnut Canyon NM	187,205	22.7%	20,280	22.7%
	Wupatki NM ⁶	220,205	2.1%	73,401	2.1%
	Subtotal Arizona	11,254,081	4.1%	8,604,301	3.8%
Arkansas	Arkansas Post NMEM	26,203	4.7%	3,275	4.7%
	Buffalo NR	1,686,348	8.8%	750,969	10.1%
	Fort Smith NHS	124,486	-7.9%	13,797	-7.9%
	Hot Springs NP	2,461,812	-1.6%	598,394	4.8%
	Little Rock Central High School NHS	63,767	8.9%	5,313	8.9%
	Pea Ridge NMP ⁶	102,621	-40.2%	17,103	-40.2%
	President W.J. Clinton Birthplace Home NHS	6,215	23.7%	517	23.7%
	Subtotal Arkansas	4,471,452	0.5%	1,389,368	6.5%
California	Cabrillo NM	845,912	4.4%	105,420	4.4%
	César E. Chávez NM	26,641	121.9%	1,109	121.8%
	Channel Islands NP ⁵	262,581	-20.1%	188,605	-46.8%
	Death Valley NP ⁵	1,440,421	31.0%	867,844	27.3%
	Devils Postpile NM ⁵	94,215	9.4%	27,479	9.4%
	Eugene O'Neill NHS	17,653	13.6%	1,223	7.4%
	Fort Point NHS	1,189,908	31.7%	56,808	32.4%

^A Total of parks by state may not equal state subtotals due to rounding in the underlying calculations.

^B Percents will not add to state subtotals because each row is a separate percent change by park.

Table 6 (continued). 2024 Recreation Visits / Visitor Days and Percent Change from 2023 by State and U.S. Territory.

State	Park	Recreation Visits ^A	Percent Change ^B	Recreation Visitor Days ^A	Percent Change ^B
California (continued)	Golden Gate NRA	17,187,508	14.9%	3,775,773	16.1%
	John Muir NHS	45,753	-10.1%	5,719	-10.1%
	Joshua Tree NP	2,991,874	-8.5%	1,484,040	-7.0%
	Kings Canyon NP ⁴	699,389	8.8%	1,948,108	7.1%
	Lassen Volcanic NP ⁵	357,651	-14.6%	312,299	-8.9%
	Lava Beds NM	127,563	-6.3%	34,583	-10.4%
	Manzanar NHS	93,854	-11.0%	11,731	-11.0%
	Mojave NPRES ^{5,6}	424,864	-64.0%	217,048	-63.4%
	Muir Woods NM	792,494	-2.1%	88,032	-2.1%
	Pinnacles NP	354,076	3.8%	186,658	16.3%
	Point Reyes NS	2,371,800	4.6%	922,230	4.8%
	Port Chicago Naval Magazine NMEM	930	21.7%	155	22.0%
	Redwood NP	622,883	52.3%	206,449	39.7%
	Rosie the Riveter WWII Home Front NHP	34,913	-12.5%	8,728	-12.5%
	San Francisco Maritime NHP ⁵	2,535,134	43.3%	199,141	41.9%
	Santa Monica Mountains NRA ⁵	639,745	-15.8%	92,665	-28.4%
	Sequoia NP ⁴	1,309,573	33.6%	3,433,124	27.9%
	Tule Lake NM	3,810	39.5%	337	64.4%
	Whiskeytown NRA ⁵	812,244	-11.7%	241,397	-13.7%
	Yosemite NP	4,121,807	5.8%	5,016,295	15.6%
Subtotal California		39,405,196	8.8%	19,433,000	9.6%
Colorado	Amache NHS ²	4,771	-	397	-
	Bent's Old Fort NHS ⁵	16,102	-18.3%	2,348	-18.3%

^A Total of parks by state may not equal state subtotals due to rounding in the underlying calculations.

^B Percents will not add to state subtotals because each row is a separate percent change by park.

Table 6 (continued). 2024 Recreation Visits / Visitor Days and Percent Change from 2023 by State and U.S. Territory.

State	Park	Recreation Visits ^A	Percent Change ^B	Recreation Visitor Days ^A	Percent Change ^B
Colorado (continued)	Black Canyon of the Gunnison NP ⁵	335,862	-5.9%	154,134	-3.6%
	Colorado NM ⁴	488,038	0.4%	122,037	-7.7%
	Curecanti NRA	980,899	2.4%	345,692	-0.7%
	Dinosaur NM	238,364	-1.4%	128,267	-3.3%
	Florissant Fossil Beds NM	71,499	12.2%	7,558	17.5%
	Great Sand Dunes NP & PRES ⁴	437,661	-14.6%	253,713	2.6%
	Hovenweep NM	13,848	-10.7%	4,771	17.5%
	Mesa Verde NP	480,065	-5.0%	266,984	-9.1%
	Rocky Mountain NP ⁴	4,154,349	0.9%	2,317,605	3.6%
	Sand Creek Massacre NHS	6,401	9.3%	1,024	9.3%
	Subtotal Colorado	7,227,859	-0.7%	3,604,530	1.1%
Connecticut	Weir Farm NHP	34,246	-5.7%	5,246	-4.7%
	Subtotal Connecticut	34,246	-5.7%	5,246	-4.7%
Delaware	First State NHP ⁴	192,220	52.1%	44,407	78.6%
	Subtotal Delaware	192,220	52.1%	44,407	78.6%
District of Columbia	Belmont-Paul Women's Equality NM	7,704	278.8%	642	279.9%
	Carter G. Woodson Home NHS ⁵	30	-	1	-
	Chesapeake & Ohio Canal NHP ⁵	1,061,104	-1.1%	188,155	-1.4%
	Dwight D. Eisenhower MEM	731,476	9.6%	30,478	9.6%
	Ford's Theatre NHS	457,132	16.3%	54,213	20.1%
	Franklin Delano Roosevelt MEM	3,225,923	-2.2%	134,413	-2.2%
	Frederick Douglass NHS	25,836	100.2%	2,153	100.3%
Korean War Veterans MEM	4,344,305	5.1%	181,012	5.1%	

^A Total of parks by state may not equal state subtotals due to rounding in the underlying calculations.

^B Percents will not add to state subtotals because each row is a separate percent change by park.

Table 6 (continued). 2024 Recreation Visits / Visitor Days and Percent Change from 2023 by State and U.S. Territory.

State	Park	Recreation Visits ^A	Percent Change ^B	Recreation Visitor Days ^A	Percent Change ^B
District of Columbia (continued)	Lincoln MEM	8,479,349	4.7%	353,306	4.7%
	Martin Luther King, Jr. MEM	3,251,594	-2.7%	135,483	-2.7%
	Mary McLeod Bethune Council House NHS	3,338	-5.6%	556	-5.6%
	National Capital Parks Central ^{3,5}	1,034,341	-2.2%	71,139	-4.9%
	National Capital Parks East	1,144,014	1.5%	162,577	1.7%
	Pennsylvania Avenue NHS	141,840	2.7%	3,900	2.7%
	President's Park	915,636	2.1%	109,335	2.1%
	Rock Creek Park ⁴	1,917,170	5.5%	180,660	21.3%
	Thomas Jefferson MEM	2,915,319	-2.3%	121,471	-2.3%
	Vietnam Veterans MEM	5,295,711	5.1%	220,654	5.1%
	Washington Monument	247,208	-0.6%	20,600	-0.6%
	White House	517,030	-6.6%	28,116	-31.2%
	World War I MEM	1,084,897	-0.7%	45,204	-0.7%
	World War II MEM	5,160,769	0.8%	215,031	0.8%
	Subtotal District of Columbia	41,961,726	2.1%	2,259,099	2.6%
Florida	Big Cypress NPRES ^{4,5}	2,216,708	20.0%	388,900	12.2%
	Biscayne NP	512,213	-10.3%	131,669	-12.7%
	Canaveral NS ⁵	1,884,091	-6.7%	398,061	-6.9%
	Castillo de San Marcos NM ⁵	579,825	-10.3%	36,239	-10.3%
	De Soto NMEM ⁵	155,016	-33.2%	21,314	-33.2%
	Dry Tortugas NP	84,873	0.7%	51,658	-1.4%
	Everglades NP ⁵	741,983	-8.4%	335,918	-18.9%
	Fort Caroline NMEM ⁵	260,350	-19.6%	21,695	-19.6%

^A Total of parks by state may not equal state subtotals due to rounding in the underlying calculations.

^B Percents will not add to state subtotals because each row is a separate percent change by park.

Table 6 (continued). 2024 Recreation Visits / Visitor Days and Percent Change from 2023 by State and U.S. Territory.

State	Park	Recreation Visits ^A	Percent Change ^B	Recreation Visitor Days ^A	Percent Change ^B
Florida (continued)	Fort Matanzas NM ⁵	680,040	-4.4%	57,495	-4.0%
	Gulf Islands NS ⁵	5,391,021	5.6%	1,213,876	1.9%
	Timucuan EHP	997,136	3.9%	192,766	-10.2%
	Subtotal Florida	13,503,256	1.5%	2,849,591	-3.6%
Georgia	Andersonville NHS	72,925	-6.2%	12,154	-6.2%
	Chattahoochee River NRA ⁵	2,940,804	-7.6%	980,267	-7.6%
	Chickamauga & Chattanooga NMP	501,540	-1.8%	78,733	-1.3%
	Cumberland Island NS ⁵	64,706	-12.3%	63,892	-12.4%
	Fort Frederica NM ⁵	243,027	-15.0%	20,439	-15.0%
	Fort Pulaski NM ⁵	356,993	-20.3%	59,521	-20.3%
	Jimmy Carter NHP	33,031	-19.4%	3,334	-18.5%
	Kennesaw Mountain NBP	1,495,856	-0.2%	211,836	-4.1%
	Martin Luther King, Jr. NHP	1,159,438	141.0%	159,763	160.9%
	Ocmulgee Mounds NHP	141,905	-21.6%	17,738	-21.6%
Subtotal Georgia	7,010,225	3.4%	1,607,677	-1.6%	
Guam	War in the Pacific NHP ⁵	373,974	-10.0%	31,347	-11.1%
	Subtotal Guam	373,974	-10.0%	31,347	-11.1%
Hawaii	Haleakalā NP ⁵	732,477	-7.4%	183,241	-9.5%
	Hawai'i Volcanoes NP	1,433,593	-11.5%	764,915	-10.6%
	Kalaupapa NHP	30,774	-34.5%	5,952	-30.2%
	Kaloko-Honokōhau NHP	351,422	20.2%	63,279	19.6%
	Pearl Harbor NMEM	1,588,798	-6.1%	397,199	-6.1%
	Pu'uhonua o Hōnaunau NHP	454,268	33.0%	37,855	33.0%

^A Total of parks by state may not equal state subtotals due to rounding in the underlying calculations.

^B Percents will not add to state subtotals because each row is a separate percent change by park.

Table 6 (continued). 2024 Recreation Visits / Visitor Days and Percent Change from 2023 by State and U.S. Territory.

State	Park	Recreation Visits ^A	Percent Change ^B	Recreation Visitor Days ^A	Percent Change ^B
Hawai'i (continued)	Pu'ukoholā Heiau NHS	27,507	18.6%	1,146	18.6%
	Subtotal Hawai'i	4,618,839	-3.9%	1,453,587	-7.5%
Idaho	City of Rocks NRES	89,949	-2.3%	26,337	-1.9%
	Craters of the Moon NM & PRES	314,118	21.9%	74,144	17.8%
	Hagerman Fossil Beds NM	39,104	16.9%	4,888	16.9%
	Minidoka NHS	9,530	5.2%	1,038	-3.2%
	Nez Perce NHP	342,924	-9.1%	23,110	-5.4%
	Subtotal Idaho	795,625	3.4%	129,517	8.4%
Illinois	Emmett Till and Mamie Till-Mobley NM ²	1,754	-	36	-
	Lincoln Home NHS	154,522	-2.8%	11,577	-1.7%
	Pullman NHP	31,961	9.4%	1,331	9.4%
	Subtotal Illinois	188,237	0.1%	12,944	-0.3%
Indiana	George Rogers Clark NHP	166,621	14.4%	18,605	14.4%
	Indiana Dunes NP ⁵	2,705,209	-2.2%	615,094	-3.6%
	Lincoln Boyhood NMEM	129,904	0.7%	12,178	0.7%
	Subtotal Indiana	3,001,734	-1.3%	645,877	-3.1%
Iowa	Effigy Mounds NM	61,975	0.3%	12,911	0.3%
	Herbert Hoover NHS ⁴	148,031	34.9%	12,335	34.9%
	Subtotal Iowa	210,006	22.4%	25,246	14.7%
Kansas	Brown v. Board of Education NHP	21,919	16.4%	3,653	16.4%
	Fort Larned NHS	26,219	0.4%	4,369	0.4%
	Fort Scott NHS	24,654	-3.3%	3,081	-3.3%
	Nicodemus NHS ⁴	7,535	0.6%	549	-12.0%

^A Total of parks by state may not equal state subtotals due to rounding in the underlying calculations.

^B Percents will not add to state subtotals because each row is a separate percent change by park.

Table 6 (continued). 2024 Recreation Visits / Visitor Days and Percent Change from 2023 by State and U.S. Territory.

State	Park	Recreation Visits ^A	Percent Change ^B	Recreation Visitor Days ^A	Percent Change ^B
Kansas (continued)	Tallgrass Prairie NPRES	29,955	4.1%	4,992	4.1%
	Subtotal Kansas	110,282	3.4%	16,644	3.4%
Kentucky	Abraham Lincoln Birthplace NHP	249,166	3.8%	20,763	3.8%
	Big South Fork NRRRA ⁵	319,636	1.8%	189,136	-0.2%
	Camp Nelson NM	34,716	111.7%	2,169	111.6%
	Cumberland Gap NHP ⁵	678,202	-8.5%	133,643	-9.2%
	Mammoth Cave NP	747,042	14.1%	485,605	12.4%
	Mill Springs Battlefield NM	8,579	-6.2%	1,484	-10.1%
	Subtotal Kentucky	2,037,341	3.1%	832,800	5.3%
Louisiana	Cane River Creole NHP ⁵	12,592	7.6%	2,098	7.6%
	Jean Lafitte NHP & PRES	212,591	-14.4%	21,937	-33.4%
	New Orleans Jazz NHP	44,943	11.4%	6,447	22.0%
	Subtotal Louisiana	270,126	-10.1%	30,482	-24.2%
Maine	Acadia NP	3,961,661	2.1%	2,245,729	4.4%
	Katahdin Woods and Waters NM	35,173	-8.5%	12,172	-11.3%
	Saint Croix Island IHS	13,508	8.7%	1,407	8.6%
	Subtotal Maine	4,010,342	2.0%	2,259,308	4.3%
Maryland	Antietam NB	197,340	28.5%	33,280	20.3%
	Assateague Island NS	1,036,793	33.6%	810,567	46.3%
	Catoctin Mountain Park	380,681	-12.0%	135,549	-8.1%
	Chesapeake & Ohio Canal NHP ⁵	3,360,170	-1.1%	595,825	-1.4%
	Clara Barton NHS	13,334	215.7%	1,111	216.5%
	Fort McHenry NM & HS ⁵	394,175	-8.3%	49,272	-8.3%

^A Total of parks by state may not equal state subtotals due to rounding in the underlying calculations.

^B Percents will not add to state subtotals because each row is a separate percent change by park.

Table 6 (continued). 2024 Recreation Visits / Visitor Days and Percent Change from 2023 by State and U.S. Territory.

State	Park	Recreation Visits ^A	Percent Change ^B	Recreation Visitor Days ^A	Percent Change ^B
Maryland (continued)	Fort Washington Park	491,013	9.5%	159,439	10.2%
	Greenbelt Park	77,642	-15.4%	87,158	249.4%
	Hampton NHS	12,260	-16.1%	1,532	-16.1%
	Harriet Tubman Underground Railroad NHP	17,946	56.8%	770	60.4%
	Monocacy NB	116,520	-11.8%	20,422	-14.9%
	National Capital Parks East	127,112	1.5%	18,064	1.7%
	Piscataway Park ⁴	334,260	18.3%	51,203	17.1%
	Thomas Stone NHS	4,538	-21.2%	189	-20.9%
	Subtotal Maryland	6,563,784	4.1%	1,964,381	19.4%
Massachusetts	Adams NHP	45,656	81.0%	3,733	81.9%
	Boston African American NHS	393,386	0.9%	65,564	0.9%
	Boston Harbor Islands NRA	28,157	0.6%	586	0.5%
	Boston NHP ⁵	2,744,458	9.0%	183,454	7.0%
	Cape Cod NS	3,823,242	0.4%	601,784	0.1%
	Frederick Law Olmsted NHS	13,218	11.0%	2,203	11.0%
	John F. Kennedy NHS	18,180	122.2%	757	122.6%
	Longfellow House Washington's HQ NHS ⁵	51,496	-23.6%	6,437	-23.6%
	Lowell NHP	264,456	3.2%	34,620	2.4%
	Minute Man NHP ⁵	879,316	-12.2%	109,914	-12.2%
	New Bedford Whaling NHP	18,330	7.6%	202	-6.5%
	Salem Maritime NHS ⁵	488,831	-10.3%	22,704	-3.1%
	Saugus Iron Works NHS	51,921	25.7%	6,489	25.7%

^A Total of parks by state may not equal state subtotals due to rounding in the underlying calculations.

^B Percents will not add to state subtotals because each row is a separate percent change by park.

Table 6 (continued). 2024 Recreation Visits / Visitor Days and Percent Change from 2023 by State and U.S. Territory.

State	Park	Recreation Visits ^A	Percent Change ^B	Recreation Visitor Days ^A	Percent Change ^B
Massachusetts (continued)	Springfield Armory NHS	15,925	1.4%	2,653	1.3%
	Subtotal Massachusetts	8,836,572	1.2%	1,041,100	-0.1%
Michigan	Isle Royale NP ⁴	28,806	-0.5%	129,341	1.8%
	Keweenaw NHP	31,191	6.7%	3,839	6.0%
	Pictured Rocks NL	953,052	4.6%	599,774	2.2%
	River Raisin NBP	240,556	-4.8%	40,092	-4.8%
	Sleeping Bear Dunes NL	1,670,025	4.5%	757,065	3.4%
	Subtotal Michigan	2,923,630	3.7%	1,530,111	2.6%
Minnesota	Grand Portage NM ⁴	88,931	0.7%	15,787	1.6%
	Mississippi NRRRA ⁵	256,133	-13.1%	34,643	-8.4%
	Pipestone NM	83,033	-0.2%	17,298	-0.2%
	Saint Croix NSR	450,413	11.7%	341,675	4.6%
	Voyageurs NP ^{5,6}	199,030	-9.9%	91,425	16.1%
	Subtotal Minnesota	1,077,540	-1.2%	500,828	5.2%
Mississippi	Emmett Till and Mamie Till-Mobley NM ²	1,759	-	240	-
	Gulf Islands NS ⁵	2,410,155	-24.1%	837,977	-15.9%
	Medgar and Myrlie Evers Home NM	71,554	20.2%	3,093	-25.8%
	Natchez NHP ^{4,5}	21,520	-64.8%	5,860	-59.3%
	Natchez Trace PKWY ⁵	5,891,867	8.5%	1,980,858	8.5%
	Vicksburg NMP	403,332	17.6%	74,747	18.2%
	Subtotal Mississippi	8,800,187	-2.9%	2,902,775	-0.0%

^A Total of parks by state may not equal state subtotals due to rounding in the underlying calculations.

^B Percents will not add to state subtotals because each row is a separate percent change by park.

Table 6 (continued). 2024 Recreation Visits / Visitor Days and Percent Change from 2023 by State and U.S. Territory.

State	Park	Recreation Visits ^A	Percent Change ^B	Recreation Visitor Days ^A	Percent Change ^B
Missouri	Gateway Arch NP	2,563,052	5.8%	469,892	5.8%
	George Washington Carver NM	39,081	4.8%	4,233	4.8%
	Harry S Truman NHS ⁵	24,102	-8.5%	1,358	-9.6%
	Ozark NSR ⁵	1,343,779	0.7%	301,088	-3.5%
	Ste. Geneviève NHP ^{2,5}	23,893	-	832	-
	Ulysses S. Grant NHS	44,732	35.3%	5,591	35.3%
	Wilson's Creek NB	357,805	13.0%	59,634	13.0%
	Subtotal Missouri	4,396,444	5.4%	842,628	2.9%
Montana	Big Hole NB ⁵	45,211	-18.1%	5,243	-17.3%
	Bighorn Canyon NRA ⁵	118,701	1.0%	41,452	5.5%
	Glacier NP ⁵	3,208,755	9.4%	2,920,641	7.0%
	Grant-Kohrs Ranch NHS	27,479	1.0%	2,816	0.9%
	Little Bighorn Battlefield NM	111,825	-50.8%	9,318	-50.8%
	Yellowstone NP ⁴	2,419,622	5.4%	2,430,803	5.4%
	Subtotal Montana	5,931,593	4.9%	5,410,273	6.0%
Nebraska	Agate Fossil Beds NM	19,395	24.6%	4,158	26.5%
	Homestead NHP	52,330	5.0%	7,131	5.3%
	Niobrara NSR	74,387	-1.1%	47,777	-1.8%
	Scotts Bluff NM ⁵	183,915	5.5%	29,119	5.5%
	Subtotal Nebraska	330,027	4.8%	88,185	2.2%
Nevada	Death Valley NP ⁵	64	48.8%	29	45.0%
	Great Basin NP	152,068	6.1%	118,456	-6.2%
	Lake Mead NRA	4,809,640	10.6%	2,912,947	8.8%

^A Total of parks by state may not equal state subtotals due to rounding in the underlying calculations.

^B Percents will not add to state subtotals because each row is a separate percent change by park.

Table 6 (continued). 2024 Recreation Visits / Visitor Days and Percent Change from 2023 by State and U.S. Territory.

State	Park	Recreation Visits ^A	Percent Change ^B	Recreation Visitor Days ^A	Percent Change ^B
Nevada (continued)	Tule Springs Fossil Beds NM	60,431	0.5%	7,553	0.5%
	Subtotal Nevada	5,022,203	10.3%	3,038,985	8.1%
New Hampshire	Saint-Gaudens NHP	26,685	-12.6%	4,170	-11.8%
	Subtotal New Hampshire	26,685	-12.6%	4,170	-11.8%
New Jersey	Delaware Water Gap NRA	2,896,630	-3.0%	1,030,706	-1.9%
	Gateway NRA	1,863,221	12.6%	525,644	13.0%
	Morristown NHP ⁵	208,138	-13.3%	50,424	-8.8%
	Paterson Great Falls NHP ⁶	210,741	-24.7%	30,369	-43.8%
	Thomas Edison NHP	34,031	1.6%	3,259	1.5%
	Subtotal New Jersey	5,212,761	0.3%	1,640,402	0.8%
New Mexico	Aztec Ruins NM	40,019	-15.8%	5,002	-15.8%
	Bandelier NM ⁵	213,595	7.1%	97,119	20.4%
	Capulin Volcano NM ⁵	96,078	8.5%	10,951	8.3%
	Carlsbad Caverns NP ⁵	460,474	16.8%	146,558	17.3%
	Chaco Culture NHP ⁵	37,840	-5.9%	51,883	-0.4%
	El Malpais NM ⁵	163,679	-2.1%	54,559	-2.1%
	El Morro NM	57,827	5.5%	13,556	4.0%
	Fort Union NM	9,217	-3.7%	906	-3.6%
	Gila Cliff Dwellings NM ⁴	47,378	39.5%	5,211	22.7%
	Manhattan Project NHP	25,538	26.3%	1,114	28.8%
	Pecos NHP	46,726	-7.9%	4,972	-7.9%
	Petroglyph NM ⁴	354,534	12.7%	59,089	12.7%
Salinas Pueblo Missions NM	38,106	-3.7%	6,225	-5.7%	

^A Total of parks by state may not equal state subtotals due to rounding in the underlying calculations.

^B Percents will not add to state subtotals because each row is a separate percent change by park.

Table 6 (continued). 2024 Recreation Visits / Visitor Days and Percent Change from 2023 by State and U.S. Territory.

State	Park	Recreation Visits ^A	Percent Change ^B	Recreation Visitor Days ^A	Percent Change ^B
New Mexico (continued)	Valles Caldera NPRES	82,111	7.9%	21,234	9.2%
	White Sands NP ⁵	702,236	-3.7%	116,033	-2.3%
	Subtotal New Mexico	2,375,358	4.8%	594,412	7.8%
New York	African Burial Ground NM	36,007	-11.8%	1,869	-9.7%
	Castle Clinton NM	3,822,759	-2.7%	159,760	-2.6%
	Eleanor Roosevelt NHS	23,699	37.9%	2,962	37.9%
	Federal Hall NMEM	63,314	-17.5%	4,049	-21.4%
	Fire Island NS ^{4,6}	303,731	1.6%	88,712	-6.2%
	Fort Stanwix NM ⁵	79,704	-4.4%	9,963	-4.4%
	Gateway NRA	7,065,817	0.2%	1,504,026	-0.9%
	General Grant NMEM ⁵	110,602	31.4%	4,814	55.2%
	Governors Island NM	63,086	63.1%	10,514	63.1%
	Hamilton Grange NMEM	63,647	30.8%	3,396	21.4%
	Home of Franklin D. Roosevelt NHS	123,848	5.1%	15,388	1.5%
	Martin Van Buren NHS ⁴	17,712	42.4%	2,103	20.7%
	Sagamore Hill NHS	130,259	-0.8%	27,137	-0.8%
	Saint Paul's Church NHS	12,135	4.5%	1,418	6.3%
	Saratoga NHP	116,537	14.3%	23,924	14.3%
	Statue of Liberty NM	3,722,029	-0.5%	1,395,761	-0.5%
	Stonewall NM	2,302,641	176.5%	175,056	190.3%
	Theodore Roosevelt Birthplace NHS	25,086	26.1%	2,371	33.8%
	Theodore Roosevelt Inaugural NHS	30,141	30.1%	4,944	44.1%
Upper Delaware S&RR ⁵	188,531	15.2%	45,174	1.8%	

^A Total of parks by state may not equal state subtotals due to rounding in the underlying calculations.

^B Percents will not add to state subtotals because each row is a separate percent change by park.

Table 6 (continued). 2024 Recreation Visits / Visitor Days and Percent Change from 2023 by State and U.S. Territory.

State	Park	Recreation Visits ^A	Percent Change ^B	Recreation Visitor Days ^A	Percent Change ^B
New York (continued)	Vanderbilt Mansion NHS	406,077	20.0%	39,785	16.7%
	Women's Rights NHP	33,691	-6.2%	2,926	-3.5%
	Subtotal New York	18,741,053	9.0%	3,526,052	2.9%
North Carolina	Blue Ridge PKWY ^{4,5}	11,271,170	8.5%	5,794,935	7.8%
	Cape Hatteras NS	2,762,954	-2.2%	1,290,390	-2.6%
	Cape Lookout NS ^{4,5}	552,786	4.3%	234,725	-1.0%
	Carl Sandburg Home NHS ^{4,5}	113,362	-23.9%	14,170	-23.9%
	Fort Raleigh NHS	274,783	4.3%	29,797	-2.0%
	Great Smoky Mountains NP ^{4,5}	2,884,314	-50.7%	945,676	-73.7%
	Guilford Courthouse NMP	461,143	13.9%	20,827	11.9%
	Moore's Creek NB	69,079	24.5%	3,598	11.7%
	Wright Brothers NMEM	406,593	-4.0%	33,882	-4.0%
	Subtotal North Carolina	18,796,184	-10.0%	8,368,000	-21.4%
North Dakota	Fort Union Trading Post NHS	12,028	-7.1%	1,230	-8.2%
	Knife River Indian Villages NHS	10,867	33.6%	1,311	33.5%
	Theodore Roosevelt NP	732,951	-1.9%	236,046	6.4%
	Subtotal North Dakota	755,846	-1.6%	238,587	6.4%
Ohio	Charles Young Buffalo Soldiers NM ⁵	4,716	42.8%	395	43.6%
	Cuyahoga Valley NP ⁵	2,912,454	1.8%	670,756	-5.5%
	Dayton Aviation Heritage NHP ⁵	87,032	-3.3%	10,550	2.8%
	First Ladies NHS	12,642	13.0%	2,107	13.0%
	Hopewell Culture NHP	65,350	5.2%	10,891	5.2%
	James A. Garfield NHS ⁵	39,671	8.5%	6,611	8.5%

^A Total of parks by state may not equal state subtotals due to rounding in the underlying calculations.

^B Percents will not add to state subtotals because each row is a separate percent change by park.

Table 6 (continued). 2024 Recreation Visits / Visitor Days and Percent Change from 2023 by State and U.S. Territory.

State	Park	Recreation Visits ^A	Percent Change ^B	Recreation Visitor Days ^A	Percent Change ^B
Ohio (continued)	Perry's Victory & Intl. Peace MEM	91,302	-10.3%	8,517	-8.7%
	William Howard Taft NHS	31,118	1.2%	2,593	1.2%
	Subtotal Ohio	3,244,285	1.5%	712,420	-5.1%
Oklahoma	Chickasaw NRA ⁵	1,670,498	-19.8%	469,618	-21.9%
	Washita Battlefield NHS	12,369	3.9%	2,061	3.9%
	Subtotal Oklahoma	1,682,867	-19.6%	471,679	-21.8%
Oregon	Crater Lake NP ⁵	504,942	-9.8%	254,763	-9.8%
	John Day Fossil Beds NM	122,529	-27.5%	11,844	-27.5%
	Lewis & Clark NHP	267,118	-6.2%	33,249	-4.6%
	Oregon Caves NM & PRES	94,016	193.4%	24,105	179.4%
	Subtotal Oregon	988,605	-5.5%	323,961	-5.3%
Pennsylvania	Allegheny Portage Railroad NHS	193,903	-2.9%	26,320	-1.7%
	Delaware Water Gap NRA	1,183,130	-3.0%	420,992	-1.9%
	Edgar Allan Poe NHS ⁵	8,131	-47.5%	677	-47.5%
	Eisenhower NHS	123,466	24.9%	16,462	24.9%
	First State NHP ⁴	16,650	0.1%	2,693	-1.6%
	Flight 93 NMEM	349,566	-7.5%	50,978	-7.5%
	Fort Necessity NB	276,173	10.9%	32,540	9.3%
	Friendship Hill NHS	19,465	1.1%	3,735	-3.3%
	Gettysburg NMP ⁵	741,574	-0.1%	256,028	-2.3%
	Hopewell Furnace NHS	48,776	-10.2%	4,917	-10.1%
	Independence NHP ⁵	2,798,651	-8.0%	354,354	-7.5%
	Johnstown Flood NMEM ⁴	95,842	-39.9%	8,305	-40.6%

^A Total of parks by state may not equal state subtotals due to rounding in the underlying calculations.

^B Percents will not add to state subtotals because each row is a separate percent change by park.

Table 6 (continued). 2024 Recreation Visits / Visitor Days and Percent Change from 2023 by State and U.S. Territory.

State	Park	Recreation Visits ^A	Percent Change ^B	Recreation Visitor Days ^A	Percent Change ^B
Pennsylvania (continued)	Steamtown NHS	60,243	3.2%	7,981	7.4%
	Thaddeus Kosciuszko NMEM	2,336	5.3%	48	4.3%
	Upper Delaware S&RR ⁵	188,531	15.2%	45,174	1.8%
	Valley Forge NHP	1,866,480	-0.7%	311,079	-0.7%
	Subtotal Pennsylvania	7,972,917	-3.9%	1,542,283	-3.1%
Puerto Rico	San Juan NHS	1,329,728	1.1%	210,222	1.5%
	Subtotal Puerto Rico	1,329,728	1.1%	210,222	1.5%
Rhode Island	Roger Williams NMEM	43,242	14.7%	4,550	20.9%
	Subtotal Rhode Island	43,242	14.7%	4,550	20.9%
South Carolina	Charles Pinckney NHS ⁵	30,903	-3.8%	5,150	-3.8%
	Congaree NP	242,049	-3.2%	81,537	-2.1%
	Cowpens NB ⁵	156,287	-31.0%	12,165	-27.5%
	Fort Sumter and Fort Moultrie NHP	384,308	-6.7%	73,877	-6.8%
	Kings Mountain NMP ⁵	182,463	-16.8%	8,235	-12.9%
	Ninety Six NHS ⁵	101,352	-14.3%	10,557	-14.3%
	Reconstruction Era NHP	23,378	-1.7%	721	-3.1%
	Subtotal South Carolina	1,120,740	-12.6%	192,242	-7.2%
South Dakota	Badlands NP ⁵	1,094,245	4.6%	395,067	7.3%
	Jewel Cave NM	145,332	19.6%	34,465	17.4%
	Minuteman Missile NHS	118,108	2.0%	7,366	-0.2%
	Missouri NRR ⁵	153,521	32.1%	12,793	32.1%
	Mount Rushmore NMEM ^{5,6}	1,850,329	-23.9%	203,021	-23.9%

^A Total of parks by state may not equal state subtotals due to rounding in the underlying calculations.

^B Percents will not add to state subtotals because each row is a separate percent change by park.

Table 6 (continued). 2024 Recreation Visits / Visitor Days and Percent Change from 2023 by State and U.S. Territory.

State	Park	Recreation Visits ^A	Percent Change ^B	Recreation Visitor Days ^A	Percent Change ^B
South Dakota (continued)	Wind Cave NP ⁵	489,399	-17.4%	115,482	-24.1%
	Subtotal South Dakota	3,850,934	-12.9%	768,194	-7.8%
Tennessee	Andrew Johnson NHS ⁵	55,270	-9.5%	2,192	-6.3%
	Big South Fork NRRRA ⁵	459,965	1.8%	272,171	-0.2%
	Chickamauga & Chattanooga NMP	501,540	-1.8%	78,733	-1.3%
	Fort Donelson NB	166,026	-7.7%	9,214	-7.8%
	Great Smoky Mountains NP ^{4,5}	9,307,519	25.0%	3,045,896	-33.5%
	Manhattan Project NHP	29,511	28.3%	2,200	14.5%
	Natchez Trace PKWY ⁵	957,428	8.5%	321,889	8.5%
	Obed W&SR	261,732	-6.2%	94,758	-5.8%
	Shiloh NMP	386,152	3.9%	44,592	5.3%
	Stones River NB	446,160	31.5%	52,889	41.7%
	Subtotal Tennessee	12,571,303	19.2%	3,924,534	-27.6%
Texas	Alibates Flint Quarries NM ⁵	8,558	42.5%	1,783	42.5%
	Amistad NRA ⁵	832,294	-0.5%	514,234	-0.2%
	Big Bend NP	561,458	10.3%	945,102	18.3%
	Big Thicket NPRES	271,823	3.4%	65,152	1.6%
	Chamizal NMEM ⁵	6,627	-20.4%	567	-18.2%
	Fort Davis NHS	42,553	5.9%	7,091	5.9%
	Guadalupe Mountains NP ⁵	226,134	-0.5%	52,143	-3.0%
	Lake Meredith NRA ^{4,5}	1,212,905	-9.3%	607,002	87.0%
	Lyndon B. Johnson NHP	119,278	0.4%	29,693	-3.5%
	Padre Island NS ⁵	514,722	-6.9%	283,963	-11.1%

^A Total of parks by state may not equal state subtotals due to rounding in the underlying calculations.

^B Percents will not add to state subtotals because each row is a separate percent change by park.

Table 6 (continued). 2024 Recreation Visits / Visitor Days and Percent Change from 2023 by State and U.S. Territory.

State	Park	Recreation Visits ^A	Percent Change ^B	Recreation Visitor Days ^A	Percent Change ^B
Texas (continued)	Palo Alto Battlefield NHP	178,946	11.5%	19,527	11.1%
	Rio Grande W&SR ⁵	172	-42.7%	2,184	-47.7%
	San Antonio Missions NHP	1,278,777	8.3%	151,844	14.5%
	Waco Mammoth NM	111,961	14.1%	11,921	17.4%
	Subtotal Texas	5,366,208	0.5%	2,692,206	18.1%
Utah	Arches NP ⁴	1,466,528	-1.0%	815,192	79.1%
	Bryce Canyon NP	2,498,075	1.5%	1,116,352	1.4%
	Canyonlands NP	818,492	2.3%	433,003	1.9%
	Capitol Reef NP ⁵	1,422,490	12.1%	129,047	-19.7%
	Cedar Breaks NM	722,834	17.7%	132,041	21.4%
	Dinosaur NM	83,749	-1.4%	45,067	-3.3%
	Glen Canyon NRA ⁵	3,582,708	-11.9%	2,109,265	-30.9%
	Golden Spike NHP	55,285	4.3%	10,758	4.1%
	Hovenweep NM	17,624	-10.7%	6,072	17.5%
	Natural Bridges NM	75,680	-9.6%	48,017	18.6%
	Rainbow Bridge NM	17,488	10498.8%	1,457	11107.7%
	Timpanogos Cave NM ⁵	114,034	-5.5%	19,950	0.3%
	Zion NP ⁵	4,946,592	7.0%	2,607,505	6.2%
	Subtotal Utah	15,821,579	0.9%	7,473,726	-5.2%
Vermont	Marsh-Billings-Rockefeller NHP	81,713	13.8%	13,618	13.8%
	Subtotal Vermont	81,713	13.8%	13,618	13.8%
Virgin Islands	Buck Island Reef NM ⁵	42,289	-8.5%	20,516	-6.8%
	Christiansted NHS	124,539	16.2%	5,471	12.8%

^A Total of parks by state may not equal state subtotals due to rounding in the underlying calculations.

^B Percents will not add to state subtotals because each row is a separate percent change by park.

Table 6 (continued). 2024 Recreation Visits / Visitor Days and Percent Change from 2023 by State and U.S. Territory.

State	Park	Recreation Visits ^A	Percent Change ^B	Recreation Visitor Days ^A	Percent Change ^B
Virgin Islands (continued)	Salt River Bay NHP & EPRES	13,185	-4.0%	2,821	-1.6%
	Virgin Islands NP	423,029	23.1%	216,801	23.1%
	Subtotal Virgin Islands	603,042	18.1%	245,609	19.3%
Virginia	Appomattox Court House NHP	83,769	-8.9%	10,138	-8.9%
	Arlington House The R.E. Lee MEM	447,641	6.8%	18,651	6.8%
	Assateague Island NS	1,245,707	-20.9%	823,118	-26.8%
	Blue Ridge PKWY ^{4,5}	5,462,466	-14.2%	2,783,365	-15.5%
	Booker T. Washington NM	24,209	-15.7%	2,160	-17.4%
	Colonial NHP	2,551,228	-5.2%	222,448	-5.2%
	Cumberland Gap NHP ⁵	51,047	-8.5%	10,059	-9.2%
	Fredericksburg & Spotsylvania NMP	818,533	-3.1%	32,735	0.5%
	George Washington Birthplace NM	58,983	-40.3%	14,768	-41.0%
	George Washington MEM PKWY	6,782,717	-8.2%	772,422	-7.7%
	LBJ Memorial Grove on the Potomac	241,358	-7.3%	10,056	-7.3%
	Maggie L. Walker NHS	6,310	-1.1%	788	-1.1%
	Manassas NBP	541,965	-4.1%	33,872	-4.1%
	Petersburg NB	191,623	4.9%	16,431	6.5%
	Prince William Forest Park ⁵	355,196	20.1%	302,915	26.8%
	Richmond NBP ⁵	156,538	-7.5%	21,798	-7.7%
	Shenandoah NP ⁵	1,720,211	9.1%	870,952	-4.2%
	Theodore Roosevelt Island	174,954	14.3%	26,243	14.3%
	Wolf Trap NP for the Performing Arts	447,863	-8.4%	149,287	-8.4%
Subtotal Virginia	21,362,318	-8.2%	6,122,206	-12.7%	

^A Total of parks by state may not equal state subtotals due to rounding in the underlying calculations.

^B Percents will not add to state subtotals because each row is a separate percent change by park.

Table 6 (continued). 2024 Recreation Visits / Visitor Days and Percent Change from 2023 by State and U.S. Territory.

State	Park	Recreation Visits ^A	Percent Change ^B	Recreation Visitor Days ^A	Percent Change ^B
Washington	Fort Vancouver NHS	1,007,756	4.1%	89,662	3.0%
	Klondike Gold Rush NHP Seattle ³	81,652	13.4%	11,907	13.4%
	Lake Chelan NRA ⁵	30,815	-21.8%	30,622	-39.2%
	Lake Roosevelt NRA	1,091,489	-4.3%	345,585	-2.8%
	Manhattan Project NHP	19,644	16.4%	5,763	21.6%
	Minidoka NHS	12,495	34.4%	2,082	34.4%
	Mount Rainier NP	1,620,006	-3.2%	1,637,817	-6.7%
	North Cascades NP ⁵	16,485	-59.1%	25,522	-42.4%
	Olympic NP	3,717,267	26.1%	1,370,970	6.2%
	Ross Lake NRA ⁵	971,173	10.1%	295,926	9.8%
	San Juan Island NHP	405,925	-11.4%	56,309	-9.7%
	Whitman Mission NHS ⁴	61,331	29.9%	5,110	29.8%
	Subtotal Washington	9,036,038	8.9%	3,877,275	-1.5%
West Virginia	Bluestone NSR ⁵	7,327	-66.1%	1,526	-66.1%
	Gauley River NRA	272,898	45.8%	127,421	38.9%
	Harpers Ferry NHP	488,049	14.2%	162,683	14.2%
	New River Gorge NP & PRES ⁵	1,811,937	6.1%	389,227	5.0%
	Subtotal West Virginia	2,580,211	10.1%	680,857	11.8%
Wisconsin	Apostle Islands NL ⁵	253,703	2.6%	70,843	-1.4%
	Ice Age NST ²	29,711	-	2,475	-
	Saint Croix NSR	450,413	11.7%	341,675	4.6%
	Subtotal Wisconsin	733,827	12.8%	414,993	4.1%

^A Total of parks by state may not equal state subtotals due to rounding in the underlying calculations.

^B Percents will not add to state subtotals because each row is a separate percent change by park.

Table 6 (continued). 2024 Recreation Visits / Visitor Days and Percent Change from 2023 by State and U.S. Territory.

State	Park	Recreation Visits ^A	Percent Change ^B	Recreation Visitor Days ^A	Percent Change ^B
Wyoming	Bighorn Canyon NRA ⁵	101,115	1.0%	35,311	5.5%
	Devils Tower NM ⁴	540,890	5.8%	119,124	9.2%
	Fort Laramie NHS	44,045	-6.6%	5,707	-6.2%
	Fossil Butte NM	21,491	10.9%	2,974	20.5%
	Grand Teton NP	3,628,222	6.2%	1,866,580	2.7%
	John D. Rockefeller, Jr. MEM PKWY	1,459,804	5.6%	192,781	5.3%
	Yellowstone NP ⁴	2,324,734	5.4%	4,839,372	7.6%
	Subtotal Wyoming	8,120,301	5.7%	7,061,849	6.2%

^A Total of parks by state may not equal state subtotals due to rounding in the underlying calculations.

^B Percents will not add to state subtotals because each row is a separate percent change by park.

Endnotes

Endnotes are defined with numeric identifiers that apply to Tables 1–6 of the previous pages and to Table 7 of the appendix at the end of this abstract.

¹ New units not reporting visitor use statistics

- Blackwell School NHS
- Carlisle Federal Indian Boarding School NM
- Frances Perkins NM
- Springfield 1908 Race Riot NM

² Areas reporting for the first time (first reporting month in parentheses)

- Amache NHS (July 2024)
- Emmett Till and Mamie Till-Mobley NM (January 2024)
- Ice Age NST (January 2024)
- Ste. Geneviève NHP (January 2024)

³ Combined areas reporting separately

- Klondike Gold Rush NHP Alaska and Klondike Gold Rush NHP Seattle are reported separately but are classified as Klondike Gold Rush NHP
- Constitution Gardens is combined with National Capital Parks Central, and breakdown is not available

⁴ Changes in counting procedures (data for the following areas may require special adjustments to be comparable with earlier data):

- Aniakchak NM & PRES (Clarified source of client, guide, and researcher inputs (VURn, permit system, or concession contract); clarified that overnight stays are recorded as user days minus visits)
- Arches NP (Changed main entrance traffic counter to use more complete information from NPS Traffic Data Program; added visits for Willow Flats Road entrance; added visits for Salt Valley Road entrance; added non-recreation visits and hours; updated persons-per-vehicle multiplier; updated values for non-reportable vehicles; added a duplicate reporting adjustment for main entrance visits; updated length of stay multipliers; updated overnight stays in tents and RVs to use a combination of recreation.gov data and sites occupied)
- Big Cypress NPRES (Changed all campgrounds from sites occupied times a person-per-site multiplier or fixed estimate to actual overnight stays from recreation.gov)

- Blue Ridge PWKY (Replaced traffic counts and regression estimates at Parkway entrances with new estimates from NPS Traffic Data Program counts along the Parkway; each new count location has updated adjustments for recreation vs. non-recreation traffic, duplicate count corrections for multiple counter crossings, duplicate count corrections for same day reentries, and adjustments for missed traffic)
- Cape Lookout NS (Switched to fixed estimate of backcountry overnight stays)
- Carl Sandburg Home NHS (Added shuttle passengers)
- Colorado NM (Changed overnight stays at Saddlehorn Campground from sites occupied times a persons-per-site multiplier to actual overnights stays from recreation.gov; walk-ins are still calculated using sites occupied times a persons-per-site multiplier)
- Devils Tower NM (Added individual fee payers representing cyclists and pedestrian visits to Recreation Visits)
- Fire Island NS (Changed from a trail count to an estimate using a traffic counter at the William Floyd Estate)
- First State NHP (Added visits and hours for new Welcome Center in New Castle, Delaware)
- Gila Cliff Dwellings NM (Changed from a single estimate of visitors entering Monument to visits derived from counts at Cliff Dweller Trail, West Fork Trail, and park Visitor Center; added hours for West Fork Trail and park Visitor Center)
- Grand Portage NM (Removed overflow parking because the lot no longer exists)
- Great Sand Dunes NP & PRES (Added duplicate reporting adjustment to account for same day reentries; updated length of stay multipliers)
- Great Smoky Mountains NP (Updated non-reportable vehicles at all entrances; updated persons-per-vehicle multipliers for entire park; updated duplicate reporting adjustment; updated lengths of stay for recreation visits)
- Herbert Hoover NHS (Removed manual counts for the Birthplace Cottage, Visitor Center, Presidential Library, and Special Event Visitors; removed grounds only estimate; added estimated visits from trail counts at Cottage Walkway, Downey Street, Poplar Street, Thompson Road trail entrance, and Ford dealership trail entrance; added estimated visits from park Loop Road traffic counter; added 15% of Herbert Hoover Presidential Library visits as non-recreation visits)
- Isle Royale NP (Updated length of stay multipliers using the results of a 2022 visitor survey; added boater overnight stays at docks and campgrounds to Miscellaneous Overnight Stays)
- Johnstown Flood NMEM (Removed non-recreation counts because Lake Road is not administered by the National Park Service)
- Katmai NP & PRES (Clarified source of client, guide, and researcher inputs (VURn, permit system, or concession contract); clarified that overnight stays are recorded as user days minus visits)

- Kings Canyon NP (Removed forest area entries for Big Stump)
- Lake Clark NP & PRES (Clarified source of client, guide, and researcher inputs (VURn, permit system, or concession contract); clarified that overnight stays are recorded as user days minus visits)
- Lake Meredith NRA (Added duplicate reporting adjustment; updated length of stay multipliers; updated persons-per-vehicle multiplier; updated persons-per-campsite multiplier)
- Martin Van Buren NHS (Updated length of stay multipliers using the results of a 2022 visitor survey)
- Natchez NHP (Removed division by 2 on traffic count)
- Nicodemus NHP (Added estimates for visits when park is closed)
- Petroglyph NM (Added trail counts at Monte Carlo and Colby Court)
- Piscataway Park (Added second counter at Marshall Hall to account for both entrances)
- Rock Creek Park (Removed Conduit School from recreation visits and hours)
- Rocky Mountain NP (Changed peak season tent and RV overnight stays from sites occupied times a persons-per-campsite multiplier to actual overnights stays for reservable sites from recreation.gov)
- Sequoia NP (Replaced traffic counts at Lookout Point and South Fork with estimates based on historic data)
- Whitman Mission NHS (Removed non-recreation visits; added estimate of 100 visits per month from walk-ins at unofficial east entrance)
- Yellowstone NP (Converted NPS campgrounds from sites occupied times a persons-per-site multiplier to actual overnights stays from recreation.gov)

⁵ Partial or temporary closings (data for the following areas may require special adjustments to be comparable with earlier data):

- Alibates Flint Quarries NM (Park closed due to Windy Deuce Fire March 8–11)
- Amistad NRA (Black Brush closed all year)
- Andrew Johnson NHS (Local area around park had limited access from September 29 through early October due to road and bridge damage from Hurricane Helene)
- Apostle Islands NL (Oak Island and Outer Island closed July through September due to bear activity; Manitou Island dock closed for replacement all summer)
- Badlands NP (Sage Creek Campground closed August 22–26 due to wildland fire in park)
- Bandelier NM (Tsankawi Trail closed for construction April 2, 2023, through May 24, 2024; Ponderosa Group Campground closed November and December for water line replacement)

- Bent's Old Fort NHS (Reconstructed Fort facility closed to public access starting early December through at least spring 2025 due to structural issues—grounds remained opened)
- Bering Land Bridge NPRES (Visitor Information Center closed April through the end of the year for renovations)
- Big Cypress NPRES (Kirby Storter partially closed in July and part of October due to wildland fires)
- Big Hole NB (Bearpaw Battlefield Road closed for construction May and June 2024)
- Big South Fork NRRRA (O&W road closed in November)
- Bighorn Canyon NRA (Yellowtail Dam Visitor Center closed all year due to staffing shortage; Black Canyon Campground closed June through August)
- Black Canyon of the Gunnison NP (North Rim Contact Station closed all summer due to staffing shortage)
- Blue Ridge PKWY (Otter Creek Campground and Peaks of Otter Campground did not open in May due to staffing shortage; North Carolina portion of the parkway from milepost 217 to milepost 469 closed from September 29 through mid-October due to damage from Hurricane Helene; various portions of the parkway reopened as safety assessments allowed)
- Bluestone NSR (Tram at Pipestem State Park closed all year restricting the most common access location to the NSR; flooding from Hurricane Helene closed all pedestrian access to the park in late September and early October)
- Boston NHP (Great Hall in Faneuil Hall closed mid-January through mid-July for restoration of the Healy Painting)
- Buck Island Reef NM (Llewelyn Charters no service all year; Jolly Roger no service July through November; Teroro no service September and December; Dragon Fly no service in September)
- Canaveral NS (Playalinda and Apollo closed October 7–18 due to damage from Hurricane Milton)
- Cane River Creole NHP (Magnolia Plantation closed until February 5)
- Cape Lookout NS (North Core CUA Ferry not running in March and April due to mechanical issues)
- Capitol Reef NP (Scenic Drive closed for paving project May 20 through October)
- Capulin Volcano NM (Intermittent closures to Volcano Road January through June for construction)
- Carl Sandburg Home NHS (Entire park closed September 29 through December 22 due to damage from Hurricane Helene; a phased reopening of some areas began on December 23)
- Carlsbad Caverns NP (No wild cave tours and Loop Road closed all year)

- Carter G. Woodson Home NHS (Closed all year for renovations; one special tour allowed in November)
- Castillo de San Marcos NM (Closed September 25–27 for Hurricane Helene and October 7–11 for Hurricane Milton)
- Chaco Culture NHP (Eight campsites closed in September due to rockfall)
- Chamizal NMEM (Gallery and theater operations closed all year)
- Channel Islands NP (Santa Barbara Island closed all year due to wharf damage; San Miguel Island closed until late October due to trail damage)
- Charles Pinckney NHS (Visitor Center closed January through April and October through December due to staffing shortage)
- Charles Young Buffalo Soldiers NM (Visitor Center and historic home closed January through April 14)
- Chattahoochee River NRA (Powers Island closed February and March for a paving project; Akers Mill closed January and February for road construction; Cochran Shoals closed March 25–April 2 for paving project; portions of Paces Mill unit closed October 2 through May 2025 for construction project; some areas of the park closed late September through early October due to flooding from Hurricane Helene)
- Chesapeake & Ohio Canal NHP (Fifteen Mile Creek closed for construction November 2023 through May 2024; Edwards Ferry parking lot closed for bridge construction September 2023 through July 2024; Lock 5 closed for construction April through September)
- Chickasaw NRA (Park closed April 27 through early May due to tornado and flood damage)
- Chiricahua NM (Approximately half of campsites were closed July 8 through September 30 due to risk of monsoon flooding)
- Cowpens NB (Park closed October 1–15 due to impacts from Hurricane Helene)
- Crater Lake NP (North entrance closed May and June; North entrance closed August 12–September 9 due to Middle Fork Fire)
- Cumberland Gap NHP (Several road and area closures September 27 through October due to impacts from Hurricane Helene)
- Cumberland Island NS (Park closed September 25–October 5 due to impacts from Hurricane Helene; backcountry / wilderness closed until November 8; mainland museum closed 11 days in December for maintenance)
- Cuyahoga Valley NP (Cuyahoga Scenic Railway closed March and April for track repair; Lock 29 closed June through November for riverbank stabilization project)
- Dayton Aviation Heritage NHP (Huffman Prairie Interpretive Center closed through the end of July due to staffing shortage with limited days open for the rest of the year)

- De Soto NMEM (Park closed September 24 through the end of the year due to impacts from Hurricane Helene and Hurricane Milton)
- Death Valley NP (Numerous areas of the park remain closed due to October 2015 flood damage)
- Denali NP & PRES (Park road closed all year at mile 42 due to landslide)
- Devils Postpile NM (Reads Meadow Road closed June through September which impacted backcountry permits and visits; no bus service and access road closed for construction in October)
- Edgar Allan Poe NHS (Park closed mid-July through end of year for maintenance)
- El Malpais NM (Zuni-Acoma Trail parking lot closed June 15–August 2 due to Encerrita Fire)
- Everglades NP (Gulf Coast Visitor Center closed since September 27, 2022, due to hurricane damage)
- Fort Caroline NMEM (Some closures and flooding in September and October due to Hurricanes Helene and Milton)
- Fort Frederica NM (Park closed September 24 through October due to impacts from Hurricane Helene)
- Fort Matanzas NM (Ferry operations suspended October through December due to dock damage from Hurricane Milton)
- Fort McHenry NM & HS (Dock for the water taxi was damaged by a storm at the end of July and ferry service to the park was suspended through the end of the year)
- Fort Pulaski NM (Park closed September 25–30 due to impacts from Hurricane Helene)
- Fort Stanwix NM (Park’s largest event, “Honor America Day”, did not take place in July which resulted in a dip in visitation for the month)
- General Grant NMEM (Tomb closed in December due to malfunction with heating system)
- Gettysburg NMP (David Wills House closed November through the end of the year for HVAC pipe break)
- Glacier NP (Logging Creek Campground and Quartz Creek Campground closed all year)
- Glen Canyon NRA (Hite entrance road closed all year)
- Grand Canyon NP (Pipeline construction and water issues closed some hotels and campgrounds in July, August, and September)
- Great Smoky Mountains NP (Several road and area closures September 28 through November due to impacts from Hurricane Helene; Cosby entrance road closed for construction in December)

- Guadalupe Mountains NP (Williams Ranch closed due to flood damage; Dog Canyon closed September 9 through the end of the year due to broken well)
- Gulf Islands NS (Fort Pickens closed from September 24–29 and Okaloosa area closed September 24–28 due to impacts from Hurricane Helene)
- Haleakalā NP (Kīpahulu District South Road closed January through September due to retaining wall failure; area closures for wildland fires July 10 through August 3)
- Harry S. Truman NHS (Truman Home closed to tours August 18 through the end of the year to repair foundation)
- Independence NHP (West Wing closed to visitors January through March; Second Bank closed to visitors January, February, and last two weeks of May through the end of the year; Old City Hall closed to visitors January and February)
- Indiana Dunes NP (Lakeview closed April through mid-May)
- James A. Garfield NHS (Garfield Home closed all year for installation of new HVAC system)
- Kings Mountain NMP (Park closed September 29–October 17 due to impacts from Hurricane Helene; backcountry trail closures lingered through November)
- Klondike Gold Rush NHP Alaska (Chilkoot Trail open only to mile 3 on U.S. side all year)
- Lake Chelan NRA (Multiple backcountry and frontcountry closures due to Pioneer Fire mid-June to late September)
- Lake Meredith NRA (Closures in March and April due to wildland fires, maintenance at Plum Creek, Mullinaw, McBride Canyon, Fritch Fortress, Cas Johnson Road, and road construction at Blue West and Fritch Fortress)
- Lassen Volcanic NP (Park closed three weeks in August due to the Park Fire; Juniper Lake and Warner Valley Campgrounds closed all year due to damage from 2022 Dixie Fire)
- Little River Canyon NPRES (Slant Road closed to vehicular traffic in late September due to washouts and bad road conditions from Hurricane Helene)
- Longfellow House Washington’s Headquarters NHS (Site closed November 2024-May 2025 for floor covering replacement)
- Minute Man NHP (Road construction forced intermittent closures in different areas of the park from May through the end of the year)
- Mississippi NRR (Saint Anthony Falls Lock and Dam Visitor Center permanently closed—effective all of 2024)
- Missouri NRR (Mulberry Bend area closed in January due to snow)
- Mojave NPRES (Cima Road closed for paving project January through August)

- Morristown NHP (Ford Mansion and Wick House closed for renovation February through September)
- Mount Rushmore NMEM (Highway 244 west closed January through May 23 for bridge replacement)
- Natchez NHP (Natchez Visitor Center closed all year for HVAC upgrade)
- Natchez Trace PKWY (Ridgeland Information Cabin closed all year; Mount Locust closed intermittently throughout year due to damage to contact station)
- National Capital Parks Central (Air and Space Snack Bar closed through September due to ongoing renovations at Smithsonian Air and Space Museum; East Potomac Park Mini Golf closed March through October for renovations; East Potomac Park Tennis Center closed October through the end of the year)
- New River Gorge NP & PRES (Brooklyn closed in November and December; Cunard Road closed in December)
- Ninety Six NHP (Park closed from September 29 through mid-October due to impacts from Hurricane Helene; equestrian parking and most trails remained closed through the end of the year)
- North Cascades NP (Cascade River Road closed July 22 until late September because of wildland fires; additional wildland fire closures to backcountry camps, trails, and portions of roads in August and September; road closures in November due to downed trees)
- Ozark NSR (Major flooding event in November closed many areas around the park in November and December)
- Padre Island NS (Park was closed several days in June due to Tropical Storm Alberto; park was closed several days in July due to Hurricane Beryl)
- Prince William Forest Park (Turkey Run Campground and Cabin 3 closed until September for repairs; Travel Trailer Village closed until May to complete renovations; Telegraph Pavilion closed September through the end of year for construction)
- Richmond NBP (Tredegar Visitor Center closed permanently in August)
- Rio Grande W&SR (Low water throughout the year and extreme temperatures in the summer lowered visits to the park)
- Ross Lake NRA (Portions of the park closed in July and August due to wildland fires in the area; a portion of Colonial Creek Campground South was closed all of 2024 due to December 2023 storm damage; Gorge Lake Campground closed all year due to damage from 2023 Sourdough Fire)
- Salem Maritime NHS (Custom House closed for maintenance until September)
- San Francisco Maritime NHP (Hyde Street Pier and access to ships reduced to just weekends all year)

- Santa Monica Mountains NRA (Multiple area closures January through May for damage from winter storms)
- Scotts Bluff NM (A severe spring storm caused closures and electrical problems for two weeks in April)
- Shenandoah NP (Road and trail closures in March due to wildland fires and smoke; Matthews Arm Campground closed May through June 27; park closed from September 29 through early October due to impacts from Hurricane Helene)
- Ste. Geneviève NHP (Bauvais-Amoureux grounds and house closed all year for construction)
- Sunset Crater Volcano NM (Visitor Center closed July 29 to September 3)
- Timpanogos Cave NM (Park closed in May due to rock trap repairs)
- Tuskegee Institute NHS (Campus shutdown for security reasons in November and December)
- Upper Delaware S&RR (Skinners Falls Bridge closed to traffic for construction)
- Voyageurs NP (Unseasonably warm and dry conditions in early 2024 either prevented the opening or forced the early closure of some winter activity areas)
- War in the Pacific NHP (Fonte Plateau closed for construction in November and December)
- Whiskeytown NRA (Backcountry camping still mostly closed after 2018 Carr Fire)
- White Sands NP (Partial closure of some areas in the park over the summer following an aircraft crash in the park)
- Wind Cave NP (Cave tours unavailable May 6 through the end of the year due to elevator replacement project)
- Zion NP (South Campground closed all year; Watchman Campground group sites closed February 1–15)

⁶ Error in Previous Years (data for the following areas may require special adjustment to be comparable with other data):

- Fire Island NS (Wilderness area Visitor Center trail counter should have been divided by 2 from 2021 through 2023—recreation visits were reported too high by 3,658 in 2021, 14,276 in 2022, and 16,255 in 2023; miscellaneous overnight stays were missing Sailors Haven short term rental beach house overnight stays in 2022 and 2023—miscellaneous overnight stays were low by 172 overnights in 2022 and 180 overnight stays in 2023; recreation visitor hours were occasionally negative due to over-correcting when subtracting overnight stays from ferry visits—when combined with the first two errors, recreation visitor hours were reported too high by 7,536 hours in 2021, 36,236 in 2022, and 39,785 hours in 2023)
- Mojave NPRES (Due to incorrect traffic counter configurations for Northbound and Southbound Kelbaker Road and Essex Road, the following errors exist in reported recreation visits and recreation visitor hours in 2022 and 2023: recreation visits in 2022 were too high

by approximately 53,600 visits, recreation visitor hours in 2022 were too high by approximately 321,600 hours, recreation visits in 2023 were too high by approximately 361,000 visits, and recreation visitor hours in 2023 were too high by approximately 2,168,000 hours)

- Mount Rushmore NMEM (Due to malfunctioning traffic counters, recreation visits and visitor hours were overestimated by an unknown amount in 2023—estimated differences could be between 15% and 35% too high)
- Paterson Great Falls NHP (10% of the traffic count was inadvertently subtracted twice from the Overlook traffic count January 2021–December 2023)
- Pea Ridge NMP (Main Entrance Traffic Count received new equipment that wasn't calibrated correctly. The result was March–December 2023 having nearly double the recreation visits and recreation visitor hours than what should have been reported. Data will appear like there was a decrease in visitation in 2024 when the count procedures were corrected.)
- Voyageurs NP (Recreation visitor hours were missing for frontcountry campers at Namakan and Rainy from December 2013 through December 2023)
- Wupatki NM (Non-recreation visits in August are too low by 18 visits from 1992 through 2023)

Appendix A

Twenty-eight parks set a new recreation visit record in 2024. Of the twenty-eight, twelve broke a record they set in 2023: Dry Tortugas NP, Glacier Bay NP & PRES, Hagerman Fossil Beds NM, Kaloko-Honokōhau NHP, Keweenaw NHP, Klondike Gold Rush NHP Alaska Unit^{3,5}, Lincoln MEM, Marsh-Billings-Rockefeller NHP, Medgar and Myrlie Evers Home NM, Minidoka NHS, New River Gorge NP & PRES⁵, and Tule Springs Fossil Beds NM. Figure 7 displays the location of each record-setting park and Table 7 lists the record-setting parks, the park unit ID, 2024 recreation visits, and information on the previous record year. Superscript notes in Table 7 can be found in the Endnotes.

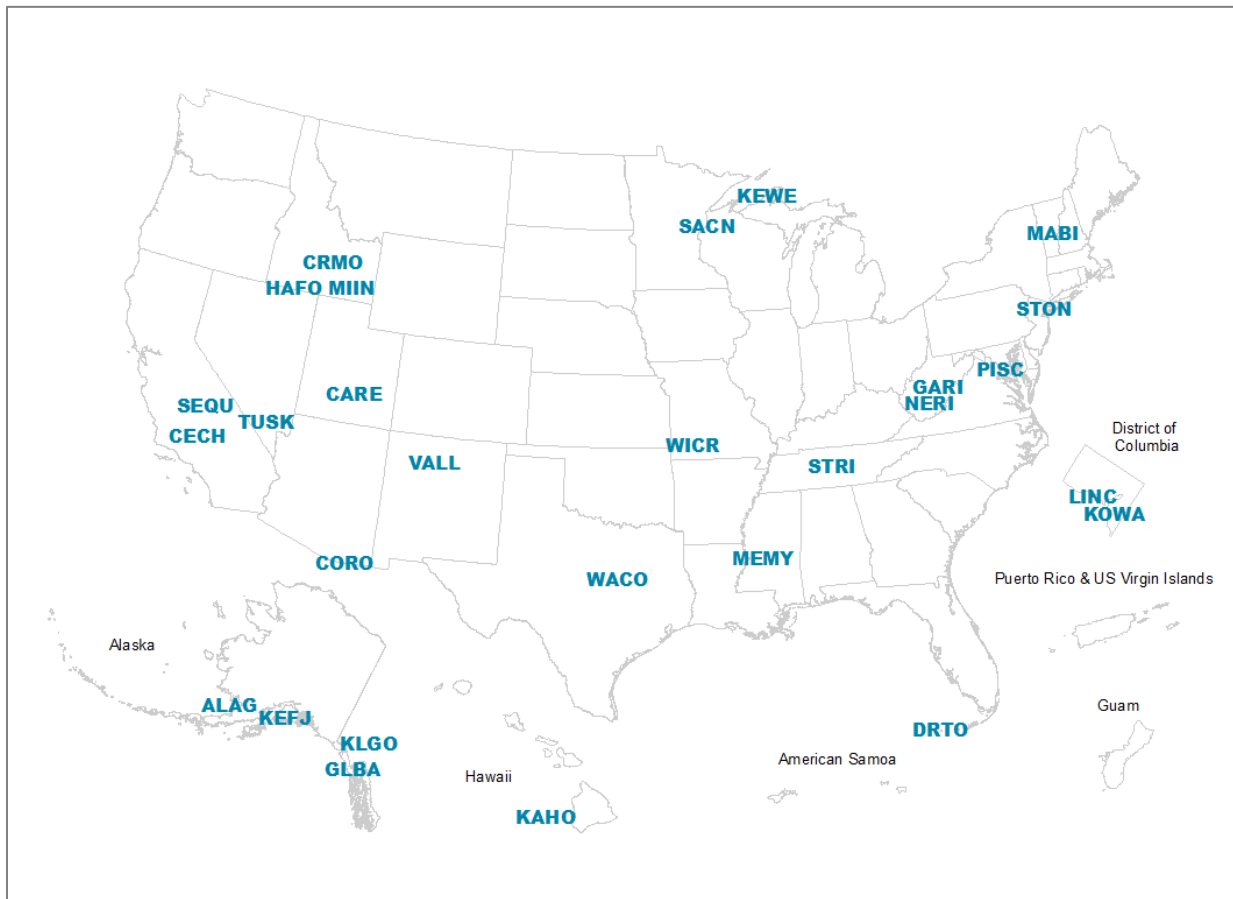


Figure 7. Parks Setting an Annual Recreation Visit Record in 2024. See Table 7 for park unit IDs.
NPS

Table 7. Parks Setting an Annual Recreation Visit Record in 2024.

Park	Park Unit ID	2024 Recreation Visits	Previous Record Year	Previous Record Visits
Alagnak WR	ALAG	278	2021	262
Capitol Reef NP ⁵	CARE	1,422,490	2021	1,405,353
César E. Chávez NM	CECH	26,641	2016	17,216
Coronado NMEM	CORO	164,426	2020	156,199
Craters of the Moon NM & PRES	CRMO	314,118	1982	294,387
Dry Tortugas NP	DRTO	84,873	2023	84,285
Gauley River NRA	GARI	272,898	1994	258,747
Glacier Bay NP & PRES	GLBA	736,282	2023	703,659
Hagerman Fossil Beds NM	HAFO	39,104	2023	33,444
Kaloko-Honokōhau NHP	KAHO	351,422	2023	292,400
Kenai Fjords NP	KEFJ	419,468	2021	411,782
Keweenaw NHP	KEWE	31,191	2023	29,221
Klondike Gold Rush NHP Alaska Unit ^{3,5}	KLGO	1,336,008	2023	1,284,320
Korean War Veterans MEM	KOWA	4,344,305	2017	4,155,947
Lincoln MEM	LINC	8,479,349	2023	8,099,148
Marsh-Billings-Rockefeller NHP	MABI	81,713	2023	71,799
Medgar and Myrlie Evers Home NM	MEMY	71,554	2023	59,542
Minidoka NHS	MIIN	22,025	2023	18,358
New River Gorge NP & PRES ⁵	NERI	1,811,937	2023	1,707,223
Piscataway Park ⁴	PISC	334,260	2019	329,729
Saint Croix NSR	SACR	900,828	2022	833,773
Sequoia NP ⁴	SEQU	1,309,573	2017	1,291,256
Stones River NB	STRI	446,160	2022	417,791
Stonewall NM	STON	2,302,641	2019	2,088,929
Tule Springs Fossil Beds NM	TUSK	60,431	2023	60,134
Valles Caldera NPRES	VALL	82,111	2021	76,578
Waco Mammoth NM	WACO	111,961	2019	111,331
Wilson's Creek NB	WICR	357,805	1988	351,658

National Park Service
U.S. Department of the Interior



Science Report NPS/SR—2025/271
<https://doi.org/10.36967/2310175>

Natural Resource Stewardship and Science

1201 Oakridge Drive, Suite 150
Fort Collins, CO 80525