

NATIONAL PARK SERVICE STATISTICAL ABSTRACT 1999



LIGHTHOUSE PROJECT WINS AWARD: The American Society of Civil Engineers named the Cape Hatteras Light Station Relocation Project as the nation's outstanding civil engineering achievement.

PUBLIC USE STATISTICS OFFICE

NATIONAL PARK SERVICE

STATISTICAL ABSTRACT

1999

United States Department of the Interior
National Park Service
Public Use Statistics Office

INTRODUCTION

National Park Service professionals are dedicated to their fundamental mission as protectors of our resources for future generations, archivists of the nation's history, and providers of educational and leisure time opportunities. Timely, reliable, and useful information is fundamental to effective management and planning.

The Public Use Statistics Office acknowledges the conscientious efforts of field staff of the many areas of the NPS. Without the effort of park staff to count, record, and report the public use summarized here, a statistical report of this quality would not be possible. A program of collecting and analyzing monthly public use is combined with continuous auditing of park counting procedures to ensure consistency and accuracy of data. The footnotes at the end of this report describe conditions at parks that may require important adjustments for certain applications of these data.

The National Park Service cares for special places saved by the American people so that all may experience our heritage. National parks help define who we are as a nation and where we have come as a people. Parks show us natural and historical wonders that grace our lives and provide us with cherished memories.

Comments or requests for additional public use information should be addressed to:

National Park Service
Public Use Statistics Office
WASO-CPC-TNT
12795 W. Alameda Parkway
P.O. Box 25287
Denver, Colorado
80225-0287

Telephone: (303) 987-6900
Facsimile: (303) 987-6901
URL: www2.nature.nps.gov/stats

STATISTICAL ABSTRACT 1999

Table of Contents

DATA TABLES

Table 1: 1999 Recreation Visits by Type of Area	1
Table 2: 1999 Recreation Visits by State	2
Table 3: 1999 Recreation Visits / Visitor Days by Region	3
Table 4: 1999 Recreation Visits / Visitor Days by Population Center	3
Table 5: 1999 Recreation & Non-Recreation Visits / Visitor Days by Park	4
Table 6: 1999 Overnight Stays by Park	12
Table 7: 1999 Buses by Park	16
Table 8: 1999 Affiliated and Non-Reporting Areas	19
Table 9: 1999 Recreation Visits / Visitor Days by State	20
Table 10: 1999 Overnight Stays by State	31

ILLUSTRATIONS

Figure 1: Ten Most Visited Areas Account for 31% of all REC Visits in 1999 . . .	36
Figure 2: Recreation Visits by Month for 1998 and 1999	37
Figure 3: Percent of Recreation Visits by Type of Area in 1999.	38
Figure 4: Percent of Recreation Visits by Region in 1999	39
Figure 5: Percent of Recreation Visits by Population Center in 1999	40
Figure 6: Overnight Stays by Type of Accommodation in 1999	41

Endnotes	42
Definitions	44
Abbreviations	48

Table 1: 1999 Recreation Visits by Type of Area

AREAS ADMINISTERED BY TYPE	REC VISITS	AREAS REPORTING VISITS	AREAS ADMINISTERED
International Historic Site	0	0	1
National Battlefield	1,442,978	10	11
National Battlefield Park	2,139,880	3	3
National Battlefield Site	0	0	1
National Historic Site	10,022,457	69	76
National Historical Park	25,174,213	36	39
National Lakeshore	3,749,057	4	4
National Memorial	28,294,028	27	28
National Military Park	5,631,620	9	9
National Monument	24,291,182	69	73
National Park	64,304,453	53	54
National Parkway	34,557,581	4	4
National Preserve	1,624,794	8	16
National Recreation Area	52,822,063	18	19
National Reserve	72,341	1	2
National River	4,379,305	4	5
National Scenic Trail	0	3	3
National Seashore	18,974,102	10	10
National Wild & Scenic River	988,049	5	10
Parks (Other)	8,662,776	11	11
NPS TOTAL	287,130,879	344	379

Table 2: 1999 Recreation Visits by State

STATE	REC VISITS	PERCENT CHANGE	STATE	REC VISITS	PERCENT CHANGE
Alabama	641,302	7.6%	Nebraska	201,080	1.5%
Alaska	2,128,478	6.9%	Nevada	6,858,076	2.8%
Arizona	11,791,173	1.9%	New Hampshire	29,031	-20.0%
Arkansas	2,361,125	1.7%	New Jersey	5,507,589	-1.5%
California	34,569,233	-0.1%	New Mexico	2,015,613	-2.9%
Colorado	6,093,796	4.7%	New York	17,285,214	-1.0%
Connecticut	15,058	27.1%	North Carolina	21,550,481	3.1%
District of Columbia	28,625,582	-4.6%	North Dakota	484,378	-1.5%
Florida	8,749,130	8.6%	Ohio	3,596,009	-4.4%
Georgia	6,133,359	2.8%	Oklahoma	1,602,065	-0.8%
Guam	138,575	3.4%	Oregon	819,889	-8.1%
Hawaii	5,467,820	12.1%	Pennsylvania	8,322,755	-5.7%
Idaho	488,230	-3.0%	Puerto Rico	950,141	6.4%
Illinois	385,683	-5.5%	Rhode Island	60,916	6.6%
Indiana	2,041,374	-15.0%	South Carolina	884,248	-5.6%
Iowa	279,764	-7.5%	South Dakota	3,819,293	-4.9%
Kansas	125,508	10.0%	Tennessee	8,642,469	2.6%
Kentucky	3,740,702	-7.1%	Texas	5,754,232	2.8%
Louisiana	874,754	4.7%	Utah	9,221,080	3.6%
Maine	2,602,227	0.3%	Vermont	44,964	98.5%
Maryland	2,982,757	-3.9%	Virgin Islands	529,426	-25.5%
Massachusetts	10,221,693	-1.4%	Virginia	23,480,127	2.3%
Michigan	1,831,243	3.0%	Washington	7,304,262	-6.1%
Minnesota	560,500	-10.4%	West Virginia	1,942,782	-1.6%
Mississippi	7,651,223	11.0%	Wisconsin	357,513	-22.8%
Missouri	5,302,199	0.8%	Wyoming	6,176,881	-1.7%
Montana	3,887,877	-3.5%			
NPS TOTAL				287,130,879	0.1%

Table 3: 1999 Recreation Visits / Visitor Days by Region

REGION	REC VISITS	PERCENT CHANGE	VISITOR DAYS	PERCENT CHANGE
Alaska	2,128,478	6.9%	1,534,907	5.9%
Intermountain	44,224,429	1.4%	30,688,231	3.3%
Midwest	21,345,669	-3.6%	5,845,896	-1.4%
National Capital	39,861,285	-3.2%	4,275,448	0.7%
Northeast	53,721,410	-1.7%	12,349,887	4.3%
Pacific West	57,964,373	0.4%	27,790,086	1.6%
Southeast	67,885,235	3.7%	26,286,950	2.6%
NPS TOTAL	287,130,879	0.1%	108,771,405	2.5%

Table 4: 1999 Recreation Visits / Visitor Days by Population Center

POPULATION CENTER	REC VISITS	PERCENT CHANGE	VISITOR DAYS	PERCENT CHANGE
Mixed area	28,346,719	5.7%	13,585,848	5.1%
Outlying Area	51,850,608	1.4%	24,277,178	2.6%
Remote Area	3,905,125	7.6%	1,691,148	-0.2%
Rural Area	90,596,351	-0.2%	54,079,406	1.5%
Suburban Area	23,511,194	-3.6%	4,424,944	-3.3%
Urban Area	88,920,882	-1.2%	10,712,881	7.3%
NPS TOTAL	287,130,879	0.1%	108,771,405	2.5%

Table 5: 1999 Recreation & Non-Recreation Visits / Visitor Days by Park

P A R K S	V I S I T S				D A Y S				
	PARK NAME	REC	PERCENT CHANGE	NON-REC	PERCENT CHANGE	REC	PERCENT CHANGE	NON-REC	PERCENT CHANGE
Abraham Lincoln Birthplace NHS	251,204	0.1%	-	-	20,934	0.1%	-	-	-
Acadia NP	2,602,227	0.3%	252,576	0.0%	1,159,243	0.5%	21,048	0.0%	0.0%
Adams NHP	84,574	33.0%	984	3.9%	6,415	30.6%	41	3.8%	
Agate Fossil Beds NM ⁴	18,117	3.0%	0	-100.00%	3,716	8.0%	-	-	-
Alibates Flint Quarries NM	3,047	-7.5%	-	-	635	-7.5%	-	-	-
Allegheny Portage Railroad NHS	111,391	0.3%	180	0.0%	10,097	0.1%	4	0.0%	
Amistad NRA	1,164,166	3.0%	1,128	0.0%	733,381	3.0%	94	0.0%	
Andersonville NHS	182,539	-19.1%	-	-	30,423	-19.1%	-	-	-
Andrew Johnson NHS	51,779	-14.0%	-	-	2,764	-7.3%	-	-	-
Aniakchak NM & PRES	377	80.4%	115	144.7%	1,268	164.2%	77	144.7%	
Antietam NB	268,897	-2.4%	-	-	54,743	6.1%	-	-	-
Apostle Islands NL	193,260	-18.4%	1,054	0.0%	78,515	-23.2%	22	0.0%	
Appomattox Court House NHP	198,665	-1.6%	-	-	13,712	-1.6%	-	-	-
Arches NP	869,980	3.9%	-	-	315,646	2.1%	-	-	-
Arkansas Post NMEM	49,087	-5.3%	-	-	6,136	-5.4%	-	-	-
Arlington House ⁴	476,911	-6.7%	-	-	19,872	-6.7%	-	-	-
Assateague Island NS	1,891,992	3.0%	3,600	0.0%	1,374,699	2.5%	300	0.0%	
Aztec Ruins NM	58,318	-7.8%	1,047	28.8%	7,290	-7.8%	166	42.6%	
Badlands NP	950,453	-6.9%	18,864	0.0%	358,762	-3.1%	786	0.0%	
Bandelier NM	332,764	-6.2%	840	0.0%	115,527	0.3%	11	0.0%	
Bent's Old Fort NHS	36,814	-10.4%	-	-	5,369	-10.4%	-	-	-
Bering Land Bridge NPRES	3,000	-19.8%	6,000	14.3%	750	-19.8%	4,000	14.3%	
Big Bend NP	327,649	-3.2%	2,364	0.0%	764,053	-1.3%	591	0.0%	
Big Cypress NPRES	503,110	5.9%	-	-	119,444	-21.8%	-	-	-
Big Hole NB	62,302	-4.1%	-	-	8,312	-7.5%	-	-	-
Big South Fork NR & RA	860,224	0.4%	-	-	511,744	3.2%	-	-	-
Big Thicket NPRES	60,193	0.2%	-	-	18,838	-4.7%	-	-	-
Bighorn Canyon NRA	234,013	-16.3%	6,900	0.0%	71,860	-14.6%	288	0.0%	
Biscayne NP	442,585	9.8%	-	-	110,646	9.8%	-	-	-
Black Canyon of the Gunnison NP	200,142	3.5%	-	-	79,233	1.4%	-	-	-
Blue Ridge PKWY	19,836,842	4.3%	1,942,260	0.0%	10,333,077	3.6%	80,928	0.0%	
Bluestone NSR	58,610	2.9%	-	-	12,211	2.9%	-	-	-
Booker T. Washington NM	22,623	17.7%	84	0.0%	3,583	15.2%	1	0.0%	
Boston African American NHS	391,235	1.8%	-	-	10,828	1.1%	-	-	-
Boston NHP	2,330,011	-13.6%	65,340	0.3%	188,330	-25.7%	926	0.3%	
Bryce Canyon NP	1,081,521	-7.3%	536,223	2.7%	727,517	-3.4%	13,406	2.7%	
Buffalo NR ⁴	796,279	22.3%	-	-	527,203	11.2%	-	-	-
Cabrillo NM	1,167,486	6.6%	81,794	0.0%	142,897	7.6%	1,704	0.0%	
Canaveral NS	846,512	20.4%	-	-	179,910	19.9%	-	-	-
Canyon de Chelly NM	852,048	0.8%	1,222,184	1.2%	518,834	1.2%	203,697	1.2%	
Canyonlands NP	446,160	2.2%	-	-	375,245	0.1%	-	-	-
Cape Cod NS	4,915,414	2.3%	29,548	0.0%	824,399	2.3%	14,774	0.0%	
Cape Hatteras NS	2,634,587	-3.8%	137,833	-2.6%	989,047	-5.3%	39,698	-7.7%	
Cape Krusenstern NM ⁵	3,947	33.3%	8,450	-7.1%	700	-5.4%	5,633	-7.1%	

Abbreviations are defined on Page 48
DOI, NPS, Public Use Statistics Office

Table 5: 1999 Recreation & Non-Recreation Visits / Visitor Days by Park (cont.)

P A R K S	V I S I T S				D A Y S			
	REC	PERCENT CHANGE	NON-REC	PERCENT CHANGE	REC	PERCENT CHANGE	NON-REC	PERCENT CHANGE
Cape Lookout NS ⁴	553,243	54.8%	4,800	0.0%	194,946	14.0%	1,200	0.0%
Capitol Reef NP	680,153	3.7%	60,767	1.9%	117,663	4.7%	5,064	1.9%
Capulin Volcano NM	65,278	-6.9%	410	2.5%	7,690	-7.6%	34	2.5%
Carl Sandburg Home NHS	36,442	-3.9%	-	-	3,969	-5.5%	-	-
Carlsbad Caverns NP	514,418	-1.5%	-	-	166,744	-3.0%	-	-
Casa Grande Ruins NM	151,185	0.3%	2,160	0.0%	10,709	0.3%	18	0.0%
Castillo de San Marcos NM ⁴	692,670	23.1%	-	-	43,292	23.1%	-	-
Castle Clinton NM	4,467,492	1.8%	10,701	-8.7%	187,619	1.7%	1,663	-8.2%
Catoctin Mountain Park	459,002	-5.1%	215,683	-0.8%	162,711	-1.3%	2,047	-0.5%
Cedar Breaks NM	597,460	3.2%	53,857	16.3%	104,531	4.2%	8,976	16.3%
Chaco Culture NHP	83,337	-0.6%	6,066	-0.7%	68,808	-14.5%	506	-0.7%
Chamizal NMEM	162,495	-12.9%	9,676	8.8%	20,758	-4.0%	2,822	8.8%
Channel Islands NP	607,057	5.7%	47,837	14.7%	589,420	8.8%	95,674	14.7%
Charles Pinckney NHS	32,174	-23.7%	-	-	5,362	-23.7%	-	-
Chattahoochee River NRA	2,898,155	-1.3%	-	-	966,052	-1.3%	-	-
Chesapeake and Ohio Canal NHP	2,116,916	6.7%	11,880	0.0%	1,098,197	9.9%	990	0.0%
Chickamauga & Chattanooga NMP ⁶	928,124	-9.0%	7,888,986	-8.8%	145,494	-7.9%	98,612	-8.8%
Chickasaw NRA	1,602,065	-0.8%	1,770,696	7.6%	527,605	-2.3%	11,805	7.6%
Chiricahua NM	102,541	39.0%	4,568	-4.0%	37,938	18.8%	127	-3.9%
Christiansted NHS	104,081	-2.9%	-	-	4,529	-3.5%	-	-
City of Rocks NRES	72,341	18.9%	-	-	21,103	19.0%	-	-
Clara Barton NHS	10,438	-13.0%	-	-	870	-13.0%	-	-
Colonial NHP	3,136,262	0.4%	1,955,034	6.8%	289,494	0.2%	81,460	6.8%
Colorado NM	297,113	1.9%	268,113	13.0%	76,775	-0.5%	11,172	13.0%
Congaree Swamp NM	82,223	-12.3%	-	-	22,547	-8.8%	-	-
Coronado NMEM	87,183	-3.7%	2,508	0.0%	10,130	-3.8%	105	0.0%
Cowpens NB	186,373	3.1%	-	-	9,001	7.6%	-	-
Crater Lake NP	417,992	-11.4%	49,600	0.0%	221,874	-7.5%	2,067	0.0%
Craters of the Moon NM	215,567	11.5%	-	-	53,991	9.8%	-	-
Cumberland Gap NHP ⁵	1,434,425	8.8%	6,967,760	16.5%	205,445	-2.2%	290,324	16.5%
Cumberland Island NS	44,127	-2.7%	-	-	67,717	-3.9%	-	-
Curecanti NRA	1,044,523	7.3%	-	-	403,474	3.9%	-	-
Cuyahoga Valley NRA	3,324,284	-4.1%	9,696	0.0%	810,835	-5.1%	404	0.0%
Dayton Aviation Heritage NHP	32,882	-14.2%	848	31.5%	5,480	-14.2%	71	31.5%
De Soto NMEM	275,505	13.7%	-	-	37,882	13.7%	-	-
Death Valley NP	1,227,583	4.2%	46,247	2.5%	750,731	3.3%	5,781	2.5%
Delaware Water Gap NRA	4,953,427	-1.3%	178,722	-5.5%	1,864,119	0.5%	7,447	-5.5%
Denali NP & PRES	386,867	3.9%	743,776	-2.4%	496,590	2.5%	15,496	-2.4%
Devils Postpile NM	152,642	26.0%	-	-	52,873	27.4%	-	-
Devils Tower NM	395,892	-0.8%	1,589	-0.2%	97,915	2.2%	66	-0.4%
Dinosaur NM	410,742	-2.3%	732	0.0%	193,401	-0.3%	61	0.0%
Dry Tortugas NP	74,186	23.4%	9,923	6.4%	73,038	23.8%	9,923	6.4%
Edgar Allan Poe NHS	16,796	20.3%	-	-	1,400	20.3%	-	-
Edison NHS ⁶	26,010	-57.6%	-	-	3,074	-54.0%	-	-
Effigy Mounds NM	80,414	14.0%	1,200	0.0%	16,753	14.0%	17	0.0%
Eisenhower NHS	73,347	-4.5%	-	-	10,076	-4.6%	-	-

Abbreviations are defined on Page 48
DOI, NPS, Public Use Statistics Office

Table 5: 1999 Recreation & Non-Recreation Visits / Visitor Days by Park (cont.)

P A R K S	V I S I T S				D A Y S			
	REC	PERCENT CHANGE	NON-REC	PERCENT CHANGE	REC	PERCENT CHANGE	NON-REC	PERCENT CHANGE
Cape Lookout NS ⁴	553,243	54.8%	4,800	0.0%	194,946	14.0%	1,200	0.0%
El Malpais NM	109,008	14.7%	720	0.0%	37,310	13.2%	15	0.0%
El Morro NM	80,529	0.7%	15,955	0.7%	16,748	-2.6%	439	0.8%
Eleanor Roosevelt NHS	65,703	-23.0%	-	-	8,213	-23.0%	-	-
Eugene O'Neill NHS	3,400	-6.0%	182	188.9%	910	-2.9%	30	188.9%
Everglades NP	1,073,982	-4.0%	67,461	13.8%	470,006	-0.7%	25,298	13.8%
Federal Hall NMEM	211,482	-16.1%	1,668	3.3%	11,408	-13.1%	250	16.0%
Fire Island NS	559,764	0.2%	208,920	57.6%	196,699	-5.0%	52,230	57.6%
Florissant Fossil Beds NM	81,510	2.2%	-	-	8,473	3.0%	-	-
Ford's Theatre NHS	1,159,435	-5.0%	420	0.0%	96,960	-3.8%	70	0.0%
Fort Bowie NHS	9,390	2.4%	-	-	1,565	2.4%	-	-
Fort Caroline NMEM ⁵	176,230	36.3%	-	-	14,686	36.3%	-	-
Fort Clatsop NMEM ⁴	211,494	-9.7%	305	9.7%	28,899	25.5%	6	8.5%
Fort Davis NHS	60,419	-6.8%	406	11.8%	8,546	-11.9%	47	10.5%
Fort Donelson NB	225,604	-0.1%	566,822	2.9%	13,041	0.8%	1,559	2.9%
Fort Frederica NM	281,437	0.8%	1,800	0.0%	23,670	0.8%	37	0.0%
Fort Laramie NHS	56,065	5.5%	365	0.0%	6,760	1.7%	46	0.0%
Fort Larned NHS	42,572	-2.2%	-	-	7,095	-2.2%	-	-
Fort Matanzas NM ⁵	579,385	14.5%	-	-	48,996	14.7%	-	-
Fort McHenry NM & HS	682,012	-0.4%	720	0.0%	85,252	-0.4%	30	0.0%
Fort Necessity NB	85,438	-12.6%	120	0.0%	10,178	1.9%	4	0.0%
Fort Point NHS	1,682,903	0.8%	-	-	82,822	2.8%	-	-
Fort Pulaski NM	358,710	-0.7%	28,800	0.0%	75,209	-0.4%	600	0.0%
Fort Raleigh NHS	305,305	-14.7%	1,344	0.0%	43,875	-10.0%	112	0.0%
Fort Scott NHS	42,250	-16.1%	909	3.3%	5,282	-16.0%	25	2.7%
Fort Smith NHS	35,880	-14.3%	-	-	3,977	-14.3%	-	-
Fort Stanwix NM	51,228	11.3%	-	-	6,404	11.3%	-	-
Fort Sumter NM ⁴	301,420	-10.0%	-	-	57,190	80.5%	-	-
Fort Union NM	16,022	3.6%	308	2.7%	1,575	3.6%	2	8.3%
Fort Union Trading Post NHS	20,612	4.5%	771	41.7%	2,137	4.2%	16	39.1%
Fort Vancouver NHS	377,650	3.4%	-	-	42,053	-6.4%	-	-
Fort Washington Park	248,131	-9.4%	-	-	80,847	-8.8%	-	-
Fossil Butte NM	22,043	-1.9%	473	21.9%	3,075	-2.6%	10	22.7%
Franklin Delano Roosevelt MEM	3,453,171	-18.9%	-	-	143,882	-18.9%	-	-
Frederick Douglass NHS	35,319	13.6%	-	-	2,310	-10.8%	-	-
Frederick Law Olmsted NHS	8,217	54.7%	131	-16.0%	1,370	54.7%	30	-10.3%
Fred'burg & Spots'nia CTY BM NMP	480,820	6.9%	1,136,954	-0.1%	54,387	8.4%	16,407	17.0%
Friendship Hill NHS	24,558	-11.4%	-	-	4,426	-18.0%	-	-
Gates of the Arctic NP & PRES	8,166	-1.2%	760	-50.1%	12,880	-49.0%	1,927	-20.2%
Gateway NRA ⁴	6,813,607	-4.4%	1,426,845	122.2%	1,800,351	51.6%	237,808	-44.5%
Gauley River NRA	236,918	2.9%	-	-	80,271	3.3%	-	-
General Grant NMEM	110,971	4.8%	234	-29.3%	5,974	-16.4%	6	-64.1%
George Rogers Clark NHP	146,413	2.3%	-	-	16,350	2.3%	-	-
George Washington Birthplace NM	127,449	24.6%	3,650	0.0%	21,242	24.6%	304	0.0%
George Washington Carver NM	37,653	-15.3%	-	-	4,079	-15.3%	-	-
George Washington Memorial PKWY	6,946,945	5.5%	31,098,476	0.2%	658,321	4.2%	1,295,770	0.2%

Abbreviations are defined on Page 48
DOI, NPS, Public Use Statistics Office

Table 5: 1999 Recreation & Non-Recreation Visits / Visitor Days by Park (cont.)

P A R K S	V I S I T S				D A Y S			
	PARK NAME	REC	PERCENT CHANGE	NON-REC	PERCENT CHANGE	REC	PERCENT CHANGE	NON-REC
Cape Lookout NS ⁴	553,243	54.8%	4,800	0.0%	194,946	14.0%	1,200	0.0%
Gettysburg NMP	1,641,838	-3.5%	74,400	0.0%	418,311	-5.2%	1,029	0.0%
Gila Cliff Dwellings NM	51,539	-0.1%	-	-	4,295	-0.1%	-	-
Glacier Bay NP & PRES	442,607	9.7%	674	-61.1%	494,779	11.9%	10,145	-65.9%
Glacier NP	1,684,604	-8.0%	9,295	-11.5%	1,179,408	-8.0%	6,839	-9.1%
Glen Canyon NRA	2,639,860	8.1%	27,389	13.1%	4,844,853	12.5%	27,389	13.1%
Golden Gate NRA	14,048,085	0.0%	-	-	1,900,989	7.7%	-	-
Golden Spike NHS	47,525	2.9%	31,000	0.0%	9,761	3.1%	1,292	0.0%
Grand Canyon NP	4,575,124	7.9%	355,027	4.9%	5,901,337	7.8%	29,586	4.9%
Grand Portage NM	74,744	-0.6%	-	-	4,069	1.6%	-	-
Grand Teton NP	2,680,025	-2.8%	1,480,278	8.8%	1,610,056	-0.8%	123,357	8.8%
Grant-Kohrs Ranch NHS	23,502	-7.4%	-	-	2,409	-7.4%	-	-
Great Basin NP ⁴	90,119	12.1%	6	-94.7%	88,636	24.0%	-	-94.8%
Great Sand Dunes NM	286,745	2.5%	470	0.0%	145,834	7.6%	39	0.0%
Great Smoky Mountains NP	10,283,598	2.9%	11,011,907	-2.3%	6,421,262	2.3%	458,830	-2.3%
Greenbelt Park	110,994	-24.8%	-	-	50,833	7.3%	-	-
Guadalupe Mountains NP	219,591	-3.7%	-	-	48,915	3.2%	-	-
Guilford Courthouse NMP	740,024	-1.8%	4,129,144	0.5%	32,344	-2.9%	2,856	0.5%
Gulf Islands NS	4,597,270	7.1%	122,346	0.5%	1,138,992	3.8%	8,537	12.0%
Hagerman Fossil Beds NM	13,070	-1.5%	-	-	1,634	-1.5%	-	-
Haleakala NP	1,963,187	32.9%	29,088	0.0%	375,454	27.2%	1,804	0.0%
Hamilton Grange NMEM	43,887	31.4%	175	-47.8%	2,929	37.8%	29	-42.4%
Hampton NHS	20,509	-29.0%	600	0.0%	1,753	-35.7%	50	0.0%
Harpers Ferry NHP	333,738	-10.1%	-	-	111,246	-10.1%	-	-
Harry S Truman NHS	48,847	-9.2%	-	-	3,569	-4.0%	-	-
Hawaii Volcanoes NP	1,502,855	11.1%	1,269,044	-2.5%	807,200	7.9%	34,899	-2.5%
Herbert Hoover NHS	199,350	-14.0%	18,000	0.0%	16,613	-14.0%	100	0.0%
Home of Franklin D. Roosevelt NHS ⁶	135,701	-17.0%	-	-	20,824	-18.5%	-	-
Homestead NM of America	41,510	6.7%	-	-	5,934	8.0%	-	-
Hopewell Culture NHP ⁴	29,282	-17.7%	-	-	3,724	-10.3%	-	-
Hopewell Furnace NHS	74,303	-14.1%	600	0.0%	7,430	-14.1%	25	0.0%
Horseshoe Bend NMP	111,854	-2.5%	854,845	2.0%	22,801	-0.8%	23,743	2.0%
Hot Springs NP	1,384,469	-7.5%	1,909,508	-4.6%	79,361	-7.1%	31,825	-4.6%
Hovenweep NM	47,593	100.8%	300	0.0%	10,844	71.0%	5	0.0%
Hubbell Trading Post NHS	202,572	-25.3%	4,584	0.0%	8,722	-25.3%	88	0.0%
Independence NHP	3,067,187	2.3%	-	-	385,499	1.4%	-	-
Indiana Dunes NL	1,748,047	-17.1%	118,260	0.0%	397,730	-9.6%	4,928	0.0%
Isle Royale NP	23,493	-1.8%	167	-38.1%	128,932	1.0%	1,816	-39.1%
James A. Garfield NHS	24,059	-7.1%	-	-	4,010	-7.1%	-	-
Jean Lafitte NHP & PRES	874,754	4.7%	410,296	0.4%	128,200	3.3%	8,393	0.4%
Jefferson National Expansion MEM	3,481,042	1.8%	541,053	9.3%	1,160,347	1.8%	7,665	9.3%
Jewel Cave NM	134,834	2.9%	419	64.3%	12,952	2.9%	35	64.3%
Jimmy Carter NHS	49,097	-1.1%	-	-	2,046	-1.1%	-	-
John D. Rockefeller Jr., MEM PKWY	1,380,833	-1.0%	10,800	0.0%	232,304	1.6%	225	0.0%
John Day Fossil Beds NM	99,274	-0.7%	840	0.0%	9,896	-0.7%	7	0.0%
John Fitzgerald Kennedy NHS	23,047	111.0%	-	-	961	110.9%	-	-

Abbreviations are defined on Page 48
DOI, NPS, Public Use Statistics Office

Table 5: 1999 Recreation & Non-Recreation Visits / Visitor Days by Park (cont.)

P A R K S	V I S I T S				D A Y S			
	REC	PERCENT CHANGE	NON-REC	PERCENT CHANGE	REC	PERCENT CHANGE	NON-REC	PERCENT CHANGE
Cape Lookout NS ⁴	553,243	54.8%	4,800	0.0%	194,946	14.0%	1,200	0.0%
John Muir NHS	30,992	3.1%	1,887	-4.8%	4,324	2.5%	39	-5.0%
Johnstown Flood NMEM	120,901	-11.5%	58,384	10.3%	10,166	-12.7%	146	10.5%
Joshua Tree NP	1,316,340	-6.7%	4,551	-8.7%	779,068	-2.4%	379	-8.7%
Kalaupapa NHP	57,905	-30.6%	-	-	38,603	-30.6%	-	-
Kaloko-Honokohau NHP	47,328	-16.4%	-	-	11,190	-19.3%	-	-
Katmai NP & PRES	51,399	13.0%	260	246.7%	58,938	49.7%	5,573	197.1%
Kenai Fjords NP ⁴	290,673	10.1%	0	-100.0%	78,177	14.4%	0	-100.0%
Kennesaw Mountain NBP	1,236,585	17.5%	10,206,313	-1.3%	175,110	14.5%	136,084	-1.3%
Kings Canyon NP	559,534	3.6%	33,886	23.2%	1,518,503	5.7%	11,295	23.2%
Kings Mountain NMP	254,158	0.3%	248,549	0.8%	21,702	0.3%	3,451	0.8%
Klondike Gold Rush NHP Alaska	693,883	2.0%	-	-	226,995	-2.1%	-	-
Klondike Gold Rush NHP Seattle	116,012	7.3%	-	-	7,251	7.3%	-	-
Knife River Indian Villages NHS	32,455	38.0%	341	4.0%	4,438	38.9%	14	2.4%
Kobuk Valley NP ⁵	6,309	13.7%	7,400	12.1%	1,673	-9.6%	4,933	12.1%
Korean War Veterans MEM	3,249,688	-2.6%	-	-	135,404	-2.6%	-	-
Lake Chelan NRA	50,087	9.4%	-	-	55,791	11.4%	-	-
Lake Clark NP & PRES	6,190	-45.4%	-	-	6,308	-14.8%	-	-
Lake Mead NRA	9,023,943	2.7%	327,294	2.7%	6,497,492	7.8%	163,647	2.7%
Lake Meredith NRA	1,779,138	8.7%	-	-	447,330	4.9%	-	-
Lake Roosevelt NRA	1,403,793	-9.1%	18,000	0.0%	474,059	-6.0%	750	0.0%
Lassen Volcanic NP	353,756	11.2%	-	-	323,015	10.5%	-	-
Lava Beds NM	135,180	16.8%	771	0.0%	31,875	19.3%	33	0.0%
Lincoln Boyhood NMEM	146,914	-1.6%	16,200	0.0%	13,773	-1.6%	225	0.0%
Lincoln Home NHS	385,683	-5.5%	10,962	8.7%	28,469	-5.5%	5,691	7.1%
Lincoln MEM	4,099,480	-6.2%	-	-	170,812	-6.2%	-	-
Little Bighorn Battlefield NM	394,098	7.5%	3,552	7.4%	32,860	7.5%	148	7.4%
Longfellow NHS ⁶	0	-100.0%	-	-	0	-100.0%	-	-
Lowell NHP	551,208	-0.6%	10,429	23.6%	66,719	2.7%	1,304	23.6%
LBJ MEM Grove Of the Potomac	537,685	-5.3%	-	-	22,404	-5.3%	-	-
Lyndon B. Johnson NHP	122,116	-1.7%	11,160	0.0%	30,164	-0.6%	3,720	0.0%
Maggie L. Walker NHS	9,645	2.6%	-	-	402	2.5%	-	-
Mammoth Cave NP ⁶	1,710,983	-19.1%	92,253	0.0%	378,444	-15.2%	7,212	0.0%
Manassas NBP	815,338	-16.2%	480	0.0%	50,959	-16.2%	7	0.0%
Marsh-Billings Rockefeller NHP	44,964	98.5%	-	-	7,494	98.5%	-	-
Martin Luther King, Jr., NHS ⁵	499,844	29.0%	-	-	69,943	37.0%	-	-
Martin Van Buren NHS	20,325	1.2%	720	36.4%	1,773	-0.5%	15	36.4%
Mary M. Bethune Council House NHS	6,577	-15.1%	-	-	1,096	-15.1%	-	-
Mesa Verde NP	635,736	5.2%	20,287	7.0%	429,459	7.4%	1,691	7.0%
Minute Man NHP	869,884	-9.9%	-	-	108,736	-9.9%	-	-
Mojave NPRES	391,694	4.6%	-	-	202,676	3.5%	-	-
Monocacy NB ⁴	14,834	-4.7%	-	-	1,855	471.8%	-	-
Montezuma Castle NM	823,489	-3.6%	420	7.4%	68,624	-3.6%	9	6.9%
Moore's Creek NB	81,574	56.2%	-	-	4,249	56.2%	-	-
Morristown NHP	601,925	10.8%	-	-	139,772	9.2%	-	-
Mount Rainier NP	1,291,397	-4.6%	472,694	-13.7%	1,213,637	-8.1%	39,391	-13.7%

Abbreviations are defined on Page 48
DOI, NPS, Public Use Statistics Office

Table 5: 1999 Recreation & Non-Recreation Visits / Visitor Days by Park (cont.)

P A R K S	V I S I T S				D A Y S			
	REC	PERCENT CHANGE	NON-REC	PERCENT CHANGE	REC	PERCENT CHANGE	NON-REC	PERCENT CHANGE
Cape Lookout NS ⁴	553,243	54.8%	4,800	0.0%	194,946	14.0%	1,200	0.0%
Mount Rushmore NMEM	1,972,289	-2.1%	683,989	-1.2%	216,403	-2.1%	19,000	-1.2%
Muir Woods NM	883,164	2.6%	-	-	98,105	2.6%	-	-
Natchez NHP	365,677	123.0%	-	-	57,357	130.1%	-	-
Natchez Trace PKWY	6,392,961	10.0%	8,352,583	-3.5%	2,154,574	10.0%	696,049	-3.5%
National Capital Parks Central	1,432,569	13.3%	-	-	86,245	28.0%	-	-
National Capital Parks East ⁶	1,100,142	-31.7%	20,508,020	-9.6%	120,932	-41.3%	1,072,007	-5.5%
Natural Bridges NM	129,173	2.2%	800	0.0%	59,868	3.7%	33	0.0%
Navajo NM	78,603	-13.3%	38,538	-22.1%	16,459	-8.5%	803	-22.1%
New Bedford Whaling NHP ⁴	246,920	941.4%	-	-	10,289	815.2%	-	-
New River Gorge NR	1,186,501	-0.9%	2,400	0.0%	233,255	-0.4%	400	0.0%
Nez Perce NHP	187,252	-20.7%	1,800	0.0%	20,991	-24.7%	15	0.0%
Nicodemus NHS	18,900	1374.3%	-	-	1,575	1374.3%	-	-
Ninety Six NHS	27,900	-12.4%	-	-	2,906	-12.4%	-	-
Noatak NPRES ⁵	3,927	87.0%	3,000	3.4%	3,084	10.1%	2,000	3.4%
North Cascades NP	21,488	-34.4%	-	-	28,278	-21.4%	-	-
Obed Wild and Scenic River	245,899	-1.5%	10,800	0.0%	89,601	-3.3%	75	0.0%
Ocmulgee NM	118,803	-1.2%	-	-	14,851	-1.2%	-	-
Olympic NP	3,364,266	-5.9%	878,984	-15.9%	1,477,106	-7.5%	27,380	-11.3%
Oregon Caves NM	91,129	5.4%	520	0.0%	29,998	0.5%	87	0.0%
Organ Pipe Cactus NM ⁴	156,107	-14.3%	1,422,714	100.0%	78,421	-23.2%	59,280	100.0%
Ozark National Scenic Riverways	1,536,301	-0.8%	-	-	374,856	5.8%	-	-
Padre Island NS ⁷	630,562	-10.9%	1,800	0.0%	365,616	-12.7%	1,200	0.0%
Pea Ridge NMP	95,410	19.3%	-	-	15,902	19.3%	-	-
Pecos NHP	37,886	25.6%	-	-	4,306	31.6%	-	-
Pennsylvania Avenue NHS	270,211	1.7%	-	-	7,431	1.7%	-	-
Perry's Victory and INT'L Peace MEM	179,542	-3.3%	-	-	16,566	-0.6%	-	-
Petersburg NB	148,676	-4.7%	368,090	5.8%	11,791	-3.5%	7,669	5.8%
Petrified Forest NP ⁴	666,978	-18.3%	120	0.0%	132,477	-3.1%	1,564	-21.5%
Petroglyph NM	72,604	-6.4%	-	-	6,157	-6.1%	-	-
Pictured Rocks NL	442,916	-2.7%	1,850	0.0%	193,380	-1.9%	46	0.0%
Pinnacles NM	164,854	74.2%	-	-	49,956	74.3%	-	-
Pipe Spring NM	64,735	2.8%	1,800	0.0%	5,395	2.8%	75	0.0%
Pipestone NM	92,605	0.9%	-	-	19,293	0.9%	-	-
Piscataway Park	239,008	2.3%	-	-	37,409	3.7%	-	-
Point Reyes NS	2,300,631	-7.1%	25,788	0.0%	960,988	-7.4%	2,149	0.0%
President's Park	1,363,332	2.2%	-	-	148,388	7.7%	-	-
Prince William Forest Park	145,993	-10.0%	480	0.0%	184,232	6.8%	80	0.0%
Pu'uuhonua o Honaunau NHP	435,810	-11.5%	-	-	36,318	-11.5%	-	-
Puukohola Heiau NHS	58,317	1.7%	136,351	-4.3%	2,430	1.7%	1,893	-4.3%
Rainbow Bridge NM	234,550	19.7%	-	-	29,319	19.7%	-	-
Redwood NP	369,726	-3.5%	-	-	224,996	-0.8%	-	-
Richmond NBP	87,957	7.0%	149,805	-0.3%	16,483	-1.2%	3,121	-0.3%
Rio Grande Wild and Scenic River	678	46.8%	-	-	9,807	51.6%	-	-
Rock Creek Park	1,998,719	-0.8%	12,386,845	0.3%	228,474	-0.8%	516,119	0.3%
Rocky Mountain NP ⁵	3,186,323	5.0%	179,930	3.0%	1,925,378	5.1%	3,329	1.1%

Abbreviations are defined on Page 48
DOI, NPS, Public Use Statistics Office

Table 5: 1999 Recreation & Non-Recreation Visits / Visitor Days by Park (cont.)

P A R K S	V I S I T S				D A Y S			
	REC	PERCENT CHANGE	NON-REC	PERCENT CHANGE	REC	PERCENT CHANGE	NON-REC	PERCENT CHANGE
Cape Lookout NS ⁴	553,243	54.8%	4,800	0.0%	194,946	14.0%	1,200	0.0%
Roger Williams NMEM	60,916	6.6%	85,417	6.6%	4,293	7.0%	570	6.7%
Ross Lake NRA	333,944	-21.5%	720	0.0%	145,617	-14.1%	60	0.0%
Russell Cave NM	27,289	3.6%	-	-	3,984	-1.8%	-	-
Sagamore Hill NHS	67,193	-26.1%	-	-	13,999	-26.1%	-	-
Saguaro NP	749,014	4.6%	2,675,037	3.1%	92,843	8.5%	55,730	3.1%
Saint Croix NSR	328,506	-27.4%	-	-	209,417	-21.4%	-	-
Saint Paul's Church NHS	7,442	-7.8%	552	-38.7%	919	-14.1%	52	-57.4%
Saint-Gaudens NHS	29,031	-20.0%	-	-	4,660	-20.8%	-	-
Salem Maritime NHS	762,869	-4.9%	7	-50.0%	36,389	0.6%	-	-37.5%
Salinas Pueblo Missions NM	39,962	1.3%	-	-	6,903	0.5%	-	-
San Antonio Missions NHP	1,224,178	9.4%	-	-	158,622	13.0%	-	-
San Francisco Maritime NHP	3,535,315	0.0%	-	-	329,587	-2.0%	-	-
San Juan Island NHP	270,671	8.1%	-	-	20,380	8.1%	-	-
San Juan NHS	950,141	6.4%	-	-	152,046	9.5%	-	-
Santa Monica Mountains NRA	555,529	7.6%	44,880	0.0%	89,252	8.3%	29,920	0.0%
Saratoga NHP	158,602	-6.8%	240,665	12.9%	34,645	-7.7%	1,604	12.9%
Saugus Iron Works NHS	22,064	-3.7%	45,625	0.0%	2,758	-3.7%	381	0.0%
Scotts Bluff NM	141,453	-0.1%	-	-	22,397	-0.1%	-	-
Sequoia NP	873,229	1.4%	360	0.0%	2,391,058	0.5%	120	0.0%
Shenandoah NP	1,339,286	-9.1%	10,962	0.0%	799,432	-6.8%	229	0.0%
Shiloh NMP	357,532	8.7%	132,719	-6.5%	51,292	12.0%	2,212	-6.5%
Sitka NHP	197,809	23.7%	-	-	10,087	23.7%	-	-
Sleeping Bear Dunes NL	1,364,834	5.1%	-	-	613,515	5.2%	-	-
Springfield Armory NHS	16,250	6.6%	-	-	2,708	6.6%	-	-
Statue of Liberty NM	5,370,015	3.3%	-	-	1,342,504	3.3%	-	-
Steamtown NHS	178,208	-3.8%	-	-	22,276	-3.8%	-	-
Stones River NB	191,559	2.1%	1,517	4.0%	18,894	-1.0%	26	22.9%
Sunset Crater Volcano NM	183,198	4.2%	12,000	0.0%	19,083	4.2%	333	0.0%
Tallgrass Prairie NPRES	21,786	14.7%	-	-	3,631	14.7%	-	-
Thaddeus Kosciuszko NMEM	-	2.3%	-	-	128	2.2%	-	-
Theodore Roosevelt Birthplace NHS	23,495	0.2%	1,293	-10.2%	2,059	1.3%	222	-19.1%
Theodore Roosevelt Inaugural NHS	13,315	5.9%	-	-	3,097	-0.4%	-	-
Theodore Roosevelt Island	188,431	43.0%	-	-	28,265	43.0%	-	-
Theodore Roosevelt NP	431,311	-3.8%	6,578	2.6%	105,467	1.8%	181	2.5%
Thomas Jefferson MEM	2,218,837	3.7%	-	-	92,452	3.7%	-	-
Thomas Stone NHS	4,038	33.1%	-	-	168	32.9%	-	-
Timpanogos Cave NM	122,778	3.1%	-	-	27,878	3.4%	-	-
Timucuan Ecological & Historic PRES	637,012	0.6%	-	-	78,164	-7.0%	-	-
Tonto NM	74,006	-6.1%	-	-	7,432	-2.4%	-	-
Tumacacori NHP	56,189	-4.5%	-	-	3,121	-4.5%	-	-
Tuskegee Institute NHS	54,652	13.0%	-	-	8,326	-0.1%	-	-
Tuzigoot NM	124,347	-0.9%	80	-66.7%	7,772	-0.9%	2	-66.7%
Ulysses S. Grant NHS	20,635	7.8%	-	-	2,580	7.8%	-	-
Upper Delaware Scenic & Rec'l River	354,356	21.3%	2,130	0.0%	124,521	18.9%	45	0.0%
USS Arizona MEM	1,402,418	3.2%	7,800	0.0%	233,736	3.2%	1,300	0.0%
Valley Forge NHP ⁶	1,308,986	-26.6%	5,793,080	5.5%	221,914	-26.3%	96,551	5.5%

Abbreviations are defined on Page 48
DOI, NPS, Public Use Statistics Office

Table 5: 1999 Recreation & Non-Recreation Visits / Visitor Days by Park (cont.)

P A R K S	V I S I T S				D A Y S			
	REC	PERCENT CHANGE	NON-REC	PERCENT CHANGE	REC	PERCENT CHANGE	NON-REC	PERCENT CHANGE
Cape Lookout NS ⁴	553,243	54.8%	4,800	0.0%	194,946	14.0%	1,200	0.0%
Vanderbilt Mansion NHS	313,863	-18.1%	-	-	38,414	-15.4%	-	-
Vicksburg NMP	1,021,860	1.6%	-	-	186,633	2.2%	-	-
Vietnam Veterans MEM	4,442,238	-5.2%	-	-	185,093	-5.2%	-	-
Virgin Islands NP	425,345	-23.6%	320,605	-4.9%	217,989	-23.6%	12,942	-21.5%
Voyageurs NP	228,898	-1.3%	17,851	0.8%	99,767	0.5%	744	0.8%
Walnut Canyon NM	122,064	5.8%	480	0.0%	13,508	5.8%	20	0.0%
War in the Pacific NHP	138,575	3.4%	736	2.2%	13,571	0.4%	31	2.2%
Washington Monument ⁶	553,420	62.7%	-	-	46,118	62.7%	-	-
Weir Farm NHS ⁵	15,058	27.1%	-	-	2,224	31.5%	-	-
Whiskeytown-Shasta-Trinity NRA	716,526	-4.8%	6,170	-1.6%	219,724	-1.7%	953	-0.4%
White House	1,015,395	-1.2%	-	-	63,925	-2.1%	-	-
White Sands NM	553,948	-6.6%	424	-27.5%	61,385	1.9%	390	-8.4%
Whitman Mission NHS	74,954	-3.9%	888	0.0%	6,246	-3.9%	37	0.0%
William Howard Taft NHS	5,960	-16.8%	-	-	497	-16.8%	-	-
Wilson's Creek NB	177,721	1.0%	-	-	30,575	0.9%	-	-
Wind Cave NP ⁶	761,717	-10.4%	254,348	-16.9%	209,834	-9.3%	6,995	-16.9%
W. Trap Farm Park FT Performing Arts	549,491	5.0%	-	-	183,164	5.0%	-	-
Women's Rights NHP	36,672	-50.6%	1,344	0.0%	2,725	-54.1%	56	0.0%
Wrangell-St Elias NP & PRES	29,252	5.0%	13	-99.5%	112,133	5.0%	13	-99.5%
Wright Brothers NMEM	375,681	-10.4%	2,190	0.0%	31,307	-10.4%	91	0.0%
Wupatki NM	245,225	12.8%	6,531	0.0%	40,961	12.6%	327	0.0%
Yellowstone NP	3,131,381	0.3%	992,283	2.3%	5,608,419	-0.3%	47,194	2.4%
Yosemite NP	3,493,607	-4.5%	154,777	14.1%	5,074,572	-3.0%	308,407	6.1%
Yukon-Charley Rivers NPRES	4,072	-8.5%	-	-	30,547	4.4%	-	-
Zion NP	2,449,664	3.4%	21,900	0.0%	1,338,308	3.2%	456	0.0%
NPS TOTAL	239,251,694	0.1%	144,845,631	0.2%	87,933,615	2.5%	6,440,871	0.0%

Table 6: 1999 Overnight Stays by Park

PARK NAME	CONCESSIONER		NPS CAMPGROUNDS		BACK COUNTRY	MISC	NON-REC	TOTAL
	LODGING	CAMPGDS	TENTS	RVS				
Acadia NP	-	-	125,046	23,682	-	10,218	-	158,946
Amistad NRA	-	-	6,535	14,702	2,969	978	-	25,184
Aniakchak NM & Pres	-	-	-	-	620	-	-	620
Antietam NB	-	-	-	-	-	2,204	-	2,204
Apostle Islands NL	-	-	-	-	15,250	17,846	-	33,096
Arches NP	-	-	26,984	15,520	817	5,754	-	49,075
Assateague Island NS	-	-	46,724	18,361	2,348	11,364	-	78,797
Badlands NP	8,358	-	24,977	15,619	911	-	-	49,865
Bandelier NM	-	-	10,012	6,030	2,393	2,920	-	21,355
Big Bend NP	47,580	11,429	47,320	35,919	40,059	35,895	-	218,202
Big Cypress NPRES ⁷	-	-	3,031	13,270	10,158	-	-	26,459
Big South Fork NR & RA	17,688	-	13,477	26,394	5,717	4,281	-	67,557
Big Thicket NPRES	-	-	-	-	1,103	-	-	1,103
Bighorn Canyon NRA	-	-	3,958	9,407	912	-	-	14,277
Black Canyon of the Gunnison NP	-	-	7,419	3,268	1,597	-	-	12,284
Blue Ridge PKWY	63,426	21,979	62,606	50,840	7,183	1,294	-	207,328
Bryce Canyon NP	46,408	-	40,020	59,779	2,532	1,402	-	150,141
Buffalo National River	7,221	-	63,845	19,873	45,496	23,882	-	160,317
Canaveral NS	-	-	-	-	2,142	-	-	2,142
Canyon de Chelly NM	35,365	-	23,436	29,478	1,746	2,785	-	92,810
Canyonlands NP	-	-	22,251	7,836	72,148	8,923	-	111,158
Cape Cod NS	4,578	-	-	-	-	28,469	-	33,047
Cape Hatteras NS	-	-	53,174	29,343	-	4,192	1,000	87,709
Cape Lookout NS	22,856	-	-	-	8,989	518	-	32,363
Capitol Reef NP	-	-	16,445	20,708	2,272	2,041	-	41,466
Carlsbad Caverns NP	-	-	-	-	257	-	-	257
Catoctin Mountain Park	-	-	8,519	1,656	130	28,520	-	38,825
Cedar Breaks NM	-	-	1,908	1,395	-	-	-	3,303
Chaco Culture NHP	-	-	15,015	4,597	-	198	-	19,810
Channel Islands NP	-	-	-	-	9,459	92,987	61,415	163,861
Chesapeake and Ohio Canal NHP	-	-	8,868	1,089	3,034	-	-	12,991
Chickamauga & Chattanooga NMP	-	-	-	-	-	1,722	-	1,722
Chickasaw NRA	-	-	51,175	29,399	-	25,743	-	106,317
Chiricahua NM	-	-	5,094	6,019	-	1,318	-	12,431
City of Rocks NRes	-	-	-	-	2	-	-	2
Colorado NM	-	-	9,912	8,751	187	-	-	18,850
Congaree Swamp NM	-	-	-	-	288	907	-	1,195
Cowpens NB	-	-	-	-	-	36	-	36
Crater Lake NP	32,688	29,323	3,179	-	1,258	-	-	66,448
Craters of the Moon NM	-	-	6,042	8,517	121	689	-	15,369
Cumberland Gap NHP	-	-	3,788	6,027	1,860	3,508	-	15,183
Cumberland Island NS	-	-	13,362	-	7,626	-	-	20,988
Curecanti NRA	-	-	18,512	58,188	573	87	-	77,360

Table 6: 1999 Overnight Stays by Park (cont.)

PARK NAME	CONCESSIONER		NPS CAMPGROUNDS		BACK COUNTRY	MISC	NON-REC	TOTAL
	LODGING	CAMPGDS	TENTS	RVS				
Cuyahoga Valley NRA	2,402	-	-	-	-	3,401	-	5,803
Death Valley NP	32,306	3,036	50,368	153,734	-	100	-	239,544
Delaware Water Gap NRA	-	26,332	-	-	43,768	20,173	-	90,273
Denali NP & Pres	19,912	-	28,112	38,610	36,026	1,349	-	124,009
Devils Postpile NM	-	-	3,645	1,926	-	-	-	5,571
Devils Tower NM	-	-	8,056	5,999	-	-	-	14,055
Dinosaur NM	-	-	20,524	10,155	30,395	3,626	-	64,700
Dry Tortugas NP	-	-	5,244	-	-	23,073	9,923	38,240
El Malpais NM	-	-	-	-	649	-	-	649
El Morro NM	-	-	1,136	850	-	115	-	2,101
Everglades NP	39,811	-	15,722	20,337	20,237	3,257	-	99,364
Fire Island NS	-	-	3,435	-	-	52,793	-	56,228
Fort Donelson NB	-	-	-	-	-	260	-	260
Fort Necessity NB	-	-	-	-	-	122	-	122
Fort Pulaski NM	-	-	-	-	-	318	-	318
Gates of the Arctic NP & PRES	-	-	-	-	6,282	-	512	6,794
Gateway NRA	-	-	-	-	-	7,462	-	7,462
Gauley River NRA	-	-	2,040	1,567	-	-	-	3,607
Gettysburg NMP	-	-	-	-	-	28,393	-	28,393
Glacier Bay NP & PRES	18,252	-	1,280	-	7,149	7,515	5,072	39,268
Glacier NP	131,088	-	98,094	78,778	26,209	-	-	334,169
Glen Canyon NRA	194,194	119,910	8,409	5,623	25,211	1,701,782	110	2,055,239
Golden Gate NRA	52,786	-	3,088	-	683	24,914	-	81,471
Grand Canyon NP	590,659	41,964	178,966	131,603	154,478	34,085	-	1,131,755
Grand Portage NM	-	-	-	-	145	-	-	145
Grand Teton NP	236,011	49,860	122,731	117,148	32,169	20,573	-	578,492
Great Basin NP	-	-	17,940	14,555	265	-	-	32,760
Great Sand Dunes NM	-	-	24,433	13,867	1,404	5,155	-	44,859
Great Smoky Mountains NP	10,666	-	191,169	133,961	92,994	25,459	-	454,249
Greenbelt Park	-	-	9,726	8,629	-	-	-	18,355
Guadalupe Mountains NP	-	-	11,000	6,565	3,399	2,694	-	23,658
Gulf Islands NS	-	-	36,498	117,501	4,233	7,861	4,410	170,503
Haleakala NP	-	-	17,583	-	2,317	4,228	-	24,128
Hawaii Volcanoes NP	33,815	-	9,727	385	4,527	72,314	-	120,768
Hot Springs NP	-	-	3,152	3,671	-	-	-	6,823
Hovenweep NM	-	-	921	535	-	-	-	1,456
Indiana Dunes NL	-	-	17,713	4,534	-	4,394	-	26,641
Isle Royale NP	7,642	664	7,096	-	44,028	3,681	904	64,015
John D. Rockefeller Jr., MEM PKWY	29,183	35,949	-	-	2,011	1,482	-	68,625
John Day Fossil Beds NM	-	-	-	-	-	300	-	300
Joshua Tree NP	-	-	134,982	55,785	6,383	56,492	-	253,642
Katmai NP & PRES	4,046	-	3,025	-	12,952	1,777	2,700	24,500
Kenai Fjords NP	-	-	1,628	86	2,989	-	-	4,703

Abbreviations are defined on page 48
DOI, NPS, Public Use Statistics Office

Table 6: 1999 Overnight Stays by Park (cont.)

PARK NAME	CONCESSIONER		NPS CAMPGROUNDS		BACK COUNTRY	MISC	NON-REC	TOTAL
	LODGING	CAMPGDS	TENTS	RVS				
Kennesaw Mountain NBP	-	-	-	-	-	493	-	493
Kings Canyon NP	38,868	-	86,076	37,192	72,314	6,591	-	241,041
Kings Mountain NMP	-	-	-	-	69	-	-	69
Klondike Gold Rush NHP Alaska	-	-	1,627	759	4,207	-	-	6,593
Lake Chelan NRA	9,016	-	-	-	5,763	7,892	-	22,671
Lake Clark NP & PRES	-	-	-	-	2,878	-	-	2,878
Lake Mead NRA	60,138	224,403	129,181	164,410	372,427	147,814	264,750	1,363,123
Lake Meredith NRA	-	-	15,187	64,111	7,131	1,030	-	87,459
Lake Roosevelt NRA	49,184	-	42,418	54,711	7,888	15,478	-	169,679
Lassen Volcanic NP	5,649	-	44,196	20,481	7,471	5,710	-	83,507
Lava Beds NM	-	-	2,229	1,211	-	272	-	3,712
Mammoth Cave NP	28,240	-	40,540	16,204	4,329	3,967	-	93,280
Mesa Verde NP	59,020	-	45,507	21,066	-	1,781	-	127,374
Mojave NPres	-	-	5,493	-	-	1,336	-	6,829
Mount Rainier NP	42,793	-	52,203	22,755	42,967	1,937	-	162,655
Natchez Trace PKWY	-	-	7,857	17,874	-	-	-	25,731
Natural Bridges NM	-	-	4,609	2,925	-	-	-	7,534
Navajo NM	-	-	1,762	1,229	404	24	-	3,419
New River Gorge NR	-	-	11,128	6,644	-	-	-	17,772
North Cascades NP	-	-	-	-	15,460	-	-	15,460
Obed Wild and Scenic River	-	-	3,299	185	1,343	-	-	4,827
Olympic NP	71,814	8,453	121,635	78,458	118,331	322	-	399,013
Oregon Caves NM	5,412	-	-	-	-	-	-	5,412
Organ Pipe Cactus NM	-	-	5,819	36,378	2,234	874	-	45,305
Ozark National Scenic Riverways	863	-	86,704	20,580	27,231	41,288	-	176,666
Padre Island NS	-	-	14,123	45,701	5,627	3,137	-	68,588
Perry's Victory and INT'L Peace MEM	-	-	-	-	-	2,600	-	2,600
Petrified Forest NP	-	-	-	-	464	-	1,554	2,018
Pictured Rocks NL	-	-	13,088	4,233	13,173	-	-	30,494
Point Reyes NS	8,352	2,659	-	-	22,824	-	-	33,835
Prince William Forest Park	-	25,705	8,177	341	91	35,497	-	69,811
Redwood NP	5,439	-	9,545	49,214	1,594	4,127	-	69,919
Rio Grande Wild and Scenic River	-	-	-	-	5,412	-	-	5,412
Rocky Mountain NP	-	-	97,992	63,567	41,417	46,186	-	249,162
Ross Lake NRA	6,031	-	21,119	14,964	15,555	1,227	-	58,896
Saguaro NP	-	-	-	-	1,594	-	-	1,594
Saint Croix NSR	-	-	-	-	27,297	-	-	27,297
Salinas Pueblo Missions NM	-	-	-	-	-	19	-	19
San Francisco Maritime NHP	-	-	-	-	-	11,425	-	11,425
Santa Monica Mountains NRA	-	-	-	-	144	-	-	144
Sequoia NP	38,374	-	118,998	37,272	76,718	2,286	-	273,648
Shenandoah NP	106,568	-	81,993	40,032	43,913	-	-	272,506
Sleeping Bear Dunes NL	-	-	47,758	40,473	21,140	-	-	109,371

Abbreviations are defined on page 48
DOI, NPS, Public Use Statistics Office

Table 6: 1999 Overnight Stays by Park (cont.)

PARK NAME	CONCESSIONER		NPS CAMPGROUNDS		BACK COUNTRY	MISC	NON-REC	TOTAL
	LODGING	CAMPGDS	TENTS	RVS				
Theodore Roosevelt NP	-	-	9,894	15,681	1,465	2,093	-	29,133
Valley Forge NHP	-	-	-	-	-	2,500	-	2,500
Vicksburg NMP	-	-	-	-	-	626	-	626
Virgin Islands NP	19,587	19,515	-	-	-	121,935	12,194	173,231
Voyageurs NP	1,473	-	-	-	16,732	-	-	18,205
Whiskeytown-Shasta-Trinity NRA	-	18,510	-	1,268	2,218	16,563	-	38,559
White Sands NM	-	-	-	-	2,056	-	-	2,056
Wind Cave NP	-	-	5,757	4,594	289	-	-	10,640
Wrangell-St Elias NP & PRES	-	-	-	-	6,584	5	2	6,591
Wupatki NM	-	-	-	-	60	-	-	60
Yellowstone NP	581,761	461,826	76,803	65,033	41,319	11,777	-	1,238,519
Yosemite NP	782,944	-	465,787	192,596	87,189	22,442	-	1,550,958
Yukon-Charley Rivers NPRES	-	-	-	-	14,934	-	-	14,934
Zion NP	65,582	-	86,024	58,560	13,614	13,712	-	237,492
NPS TOTAL	3,389,881	1,038,786	2,801,971	2,127,106	1,716,773	2,654,114	302,131	14,030,762

Table 7: 1999 Buses by Park

PARK NAME	BUSES	PERCENT CHANGE	PARK NAME	BUSES	PERCENT CHANGE
Abraham Lincoln Birthplace NHS	261	-2.2%	Curecanti NRA	26	-64.4%
Acadia NP	1,754	-15.9%	De Soto NMEM	56	-13.8%
Adams NHP	179	27.9%	Death Valley NP	3,066	16.6%
Agate Fossil Beds NM	27	3.8%	Delaware Water Gap NRA	2,756	-3.8%
Allegheny Portage Railroad NHS	13	-53.6%	Devils Postpile NM	5,011	-3.4%
Andersonville NHS	368	121.7%	Devils Tower NM	638	4.2%
Andrew Johnson NHS	99	1.0%	Effigy Mounds NM	157	4.0%
Antietam NB	428	12.0%	El Morro NM	110	13.4%
Appomattox Court House NHP	186	-2.6%	Eleanor Roosevelt NHS	130	-12.2%
Arches NP	2,138	14.0%	Everglades NP	299	6.0%
Arkansas Post NMEM	59	34.1%	Florissant Fossil Beds NM	91	42.2%
Assateague Island NS	643	-13.0%	Fort Caroline NMEM	3	-40.0%
Aztec Ruins NM	220	37.5%	Fort Clatsop NMEM	527	5.8%
Badlands NP	688	6.8%	Fort Davis NHS	275	-6.1%
Bandelier NM	409	8.5%	Fort Donelson NB	83	-2.4%
Bent's Old Fort NHS	136	-32.3%	Fort Frederica NM	364	-1.1%
Big Bend NP	99	-48.7%	Fort Laramie NHS	208	-72.8%
Big Hole NB	47	6.8%	Fort Larned NHS	103	-23.7%
Black Canyon of the Gunnison NP	99	-10.0%	Fort Matanzas NM	94	248.1%
Blue Ridge PKWY	121	-41.3%	Fort McHenry NM & HS	1,755	-1.6%
Booker T. Washington NM	118	12.4%	Fort Necessity NB	74	-36.2%
Boston NHP	5,048	3.9%	Fort Pulaski NM	552	-12.0%
Bryce Canyon NP	6,348	-1.0%	Fort Raleigh NHS	251	7.3%
Cabrillo NM	4,537	-5.6%	Fort Scott NHS	134	7.2%
Canyon de Chelly NM	299	-33.6%	Fort Smith NHS	101	31.2%
Canyonlands NP	371	81.9%	Fort Stanwix NM	98	14.0%
Cape Cod NS	864	-19.4%	Fort Union NM	43	-15.7%
Capitol Reef NP	176	1.7%	Fort Union Trading Post NHS	49	-14.0%
Capulin Volcano NM	37	15.6%	Fort Vancouver NHS	81	26.6%
Carlsbad Caverns NP	334	42.7%	Franklin Delano Roosevelt MEM	16,010	14.5%
Casa Grande Ruins NM	148	-19.1%	Fred'burg & Spotsylvania CTY BM NMP	588	-1.8%
Castillo de San Marcos NM	1,460	-29.6%	Friendship Hill NHS	24	-7.7%
Catoctin Mountain Park	359	35.0%	Gateway NRA	7,000	100.0%
Cedar Breaks NM	35	2.9%	Gauley River NRA	2,133	-5.7%
Chaco Culture NHP	55	-57.7%	General Grant NMEM	911	9.4%
Chickamauga & Chattanooga NMP	393	-5.1%	George Rogers Clark NHP	246	16.6%
Chiricahua NM	312	19.5%	George Washington Birthplace NM	158	-7.6%
Colonial NHP	33,369	-0.3%	George Washington Carver NM	280	46.6%
Colorado NM	189	10.5%	Gettysburg NMP	11,813	4.7%
Congaree Swamp NM	85	100.0%	Glacier NP	3,223	-34.0%
Coronado NMEM	88	-3.3%	Glen Canyon NRA	2,805	-31.0%
Cowpens NB	48	-11.1%	Grand Canyon NP	46,805	30.6%
Craters of the Moon NM	317	28.9%	Grand Portage NM	23	-8.0%
Cumberland Gap NHP	105	-29.1%	Grand Teton NP	1,101	10.8%

Table 7: 1999 Buses by Park (continued)

PARK NAME	BUSES	PERCENT CHANGE	PARK NAME	BUSES	PERCENT CHANGE
Grant-Kohrs Ranch NHS	121	-9.7%	Morristown NHP	138	-11.0%
Great Basin NP	62	-26.2%	Mount Rainier NP	661	-25.5%
Great Sand Dunes NM	456	18.4%	Mount Rushmore NMEM	3,332	15.1%
Great Smoky Mountains NP	1,015	-17.3%	Natchez NHP	153	51.5%
Guadalupe Mountains NP	102	-12.8%	Natural Bridges NM	115	180.5%
Guilford Courthouse NMP	60	-16.7%	Navajo NM	86	-23.9%
Gulf Islands NS	534	-6.0%	New River Gorge NR	679	14.7%
Haleakala NP	16,771	-14.4%	Nez Perce NHP	134	-38.0%
Hamilton Grange NMEM	994	57.8%	Ninety Six NHS	105	38.2%
Hampton NHS	39	-58.1%	Ocmulgee NM	413	14.7%
Harpers Ferry NHP	749	-6.7%	Oregon Caves NM	98	145.0%
Hawaii Volcanoes NP	14,119	12.4%	Organ Pipe Cactus NM	24	0.0%
Herbert Hoover NHS	340	6.6%	Ozark National Scenic Riverways	95	28.4%
Home of Franklin D. Roosevelt NHS	655	-3.5%	Padre Island NS	0	-100.0%
Homestead NM of America	99	16.5%	Pea Ridge NMP	86	45.8%
Hopewell Culture NHP	78	-25.7%	Pecos NHP	91	19.7%
Hopewell Furnace NHS	14	55.6%	Petersburg NB	81	-15.6%
Horseshoe Bend NMP	42	-35.4%	Petrified Forest NP	545	3.2%
Hot Springs NP	49	-29.0%	Pinnacles NM	1	-95.7%
Hubbell Trading Post NHS	249	31.7%	Pipe Spring NM	103	14.4%
Indiana Dunes NL	460	-10.9%	Pipestone NM	135	-2.9%
Jean Lafitte NHP & PRES	655	29.4%	Point Reyes NS	540	-0.9%
John Muir NHS	69	46.8%	Prince William Forest Park	72	0.0%
Johnstown Flood NMEM	122	-37.1%	Pu'uhonua o Honaunau NHP	1,289	-17.3%
Kenai Fjords NP	69	122.6%	Puukohola Heiau NHS	98	-8.4%
Kennesaw Mountain NBP	315	2.9%	Redwood NP	57	-26.0%
Kings Canyon NP	453	19.5%	Richmond NBP	82	-30.5%
Kings Mountain NMP	192	-10.7%	Rock Creek Park	110	-23.1%
Knife River Indian Villages NHS	40	-9.1%	Rocky Mountain NP	3,236	115.3%
Korean War Veterans MEM	29,521	17.9%	Russell Cave NM	46	-24.6%
Lake Mead NRA	1,257	-4.4%	Sagamore Hill NHS	241	-1.6%
Lassen Volcanic NP	128	0.0%	Saguaro NP	209	-35.7%
Lava Beds NM	57	-5.0%	Saint Paul's Church NHS	60	5.3%
Lincoln Boyhood NMEM	184	-14.0%	Salem Maritime NHS	527	1.0%
Lincoln Home NHS	1,638	5.2%	Salinas Pueblo Missions NM	70	-7.9%
Little Bighorn Battlefield NM	233	-4.9%	San Juan Island NHP	35	59.1%
Maggie L. Walker NHS	146	-9.9%	Saratoga NHP	67	76.3%
Mammoth Cave NP	585	-25.2%	Saugus Iron Works NHS	63	142.3%
Manassas NBP	114	16.3%	Scotts Bluff NM	133	18.8%
Martin Van Buren NHS	39	-13.3%	Sequoia NP	89	-10.1%
Mesa Verde NP	1,591	0.4%	Shenandoah NP	787	25.7%
Minute Man NHP	5,790	0.0%	Shiloh NMP	249	-2.0%
Monocacy NB	24	100.0%	Sleeping Bear Dunes NL	170	3.0%
Montezuma Castle NM	4,592	-1.8%	Stones River NB	76	-24.0%

Abbreviations are defined on page 48
DOI, NPS, Public Use Statistics Office

ABBREVIATIONS

BM	Battlefield Memorial	NP	National Park
CAMPGDS	Campgrounds	NPRES	National Preserve
CTY	County	NPS	National Park Service
FRED'BURG	Fredericksburg	NR	National River
FT	For the	NRA	National Recreation Area
HS	Historic Shrine, Historic Site	NRES	National Reserve
INT'L	International	NS	National Seashore
LBJ	Lyndon B. Johnson	NSR	National Scenic River
MEM	Memorial	NST	National Scenic Trail
MISC	Miscellaneous	NWSR	National Wild & Scenic River
MTNS	Mountains	ONS	Overnight Stays
NBP	National Battlefield Park	OT	On the
NBP	National Battlefield Park	PKWY	Parkway
NBS	National Battlefield Site	PRES	Preserve
NHC	National Heritage Corridor	RA	Recreation Area
NHP	National Historical Park	R	Robert
NHR	National Historical Reserve	REC	Recreation
NHS	National Historic Site	REC'L	Recreational
NL	National Lakeshore	RVS	Recreational Vehicles
NMEM	National Memorial	SPOTS'NIA	Spotsylvania
NMEM	National Monument	SRR	Scenic and Recreational River
NMP	National Military Park	WASHGTN	Washington
NON-REC	Non-Recreation		

Table 7: 1999 Buses by Park (continued)

PARK NAME	BUSES	PERCENT CHANGE	PARK NAME	BUSES	PERCENT CHANGE
Sunset Crater Volcano NM	134	19.6%	White Sands NM	224	-57.3%
Theodore Roosevelt Birthplace NHS	21	425.0%	Whitman Mission NHS	116	16.0%
Theodore Roosevelt NP	168	-13.0%	Wilson's Creek NB	238	-1.7%
Thomas Jefferson MEM	12,918	17.4%	Wind Cave NP	91	-4.2%
Tonto NM	74	23.3%	Wolf Trap Farm Park FT Performing Arts	574	-27.8%
Tuzigoot NM	235	10.8%	Women's Rights NHP	26	-23.5%
Vanderbilt Mansion NHS	445	-1.8%	Wright Brothers NMEM	531	-22.9%
Vicksburg NMP	1,054	0.3%	Wupatki NM	61	-14.1%
Walnut Canyon NM	266	33.7%	Yellowstone NP	6,457	-4.1%
War in the Pacific NHP	830	28.3%	Yosemite NP	11,987	-1.0%
Washington Monument	6,087	-10.7%	Zion NP	7,079	4.0%
NPS TOTAL				323,143	7.4%

Table 8: 1999 Affiliated and Non-Reporting Areas

AFFILIATED AREAS	AREAS NOT REPORTING PUBLIC USE
American Memorial Park	Alagnak Wild River
Benjamin Franklin National Monument	Appalachian National Scenic Trail
Blackstone River Valley National Heritage Corridor	Boston Harbor Islands National Recreation Area
Chicago Portage National Historic Site	Brices Cross Roads National Battlefield Site
Chimney Rock National Historic Site	Brown v. Board of Education National Historic Site
David Berger National Monument	Buck Island Reef National Monument ¹⁰
Delaware and Lehigh Navigational Canal NHC	Cane River Creole National Historical Park & Heritage Area
Fallen Timbers Battlefield & Fort Miami National Historic Site	Ebey's Landing National Historical Reserve
Father Marquette National Memorial	Great Egg Harbor Scenic and Recreational River
Gloria Dei (Old Swedes') Church National Historic Site	Hohokam Pima National Monument
Green Springs Historic District	Keweenaw National Historical Park
Historic Camden	Little River Canyon National Preserve
Ice Age National Scientific Reserve	Little Rock Central High School National Historic Site
Illinois and Michigan Canal National Heritage Corridor	Manzanar National Historic Site
International Peace Garden	Middle Delaware National Scenic River
Jamestown National Historic Site	Minuteman Missile National Historic Site
McLoughlin House National Historic Site	Mississippi National River and Recreation Area
Pinelands National Reserve	Missouri National Recreational River
Port Chicago Naval Magazine National Memorial	Natchez Trace National Scenic Trail
Quinebaug & Shetucket Rivers Valley NHC	National Mall
Red Hill Patrick Henry National Memorial	National Park of American Samoa, The
Roosevelt Campobello International Park	New Orleans Jazz National Historical Park
Sewall-Belmont House National Historic Site	Niobrara National Scenic River
Thomas Cole National Historic Site	Oklahoma City National Memorial
Touro Synagogue National Historic Site	Palo Alto Battlefield National Historic Site
	Potomac Heritage National Scenic Trail
	Poverty Point National Monument
	Saint Croix Island International Historic Site
	Salt River Bay National Historical Park & Ecological
	Tupelo National Battlefield
	Tuskegee Airmen National Historic Site
	Washita Battlefield National Historic Site
	Yucca House National Monument

Abbreviations are defined on page 48
DOI, NPS, Public Use Statistics Office

Table 9: 1999 Recreation Visits / Visitor Days by State

PARKS BY STATE	RECREATION VISITS	PERCENT CHANGE	RECREATION VISITOR DAYS	PERCENT CHANGE
ALABAMA				
Horseshoe Bend NMP	111,854	-2.5%	22,801	-0.8%
Natchez Trace PKWY	447,507	10.0%	150,820	10.0%
Russell Cave NM	27,289	3.6%	3,984	-1.8%
Tuskegee Institute NHS	54,652	13.0%	8,326	-0.1%
Subtotal Alabama	641,302	7.6%	185,931	7.8%
ALASKA				
Aniakchak NM & PRES	377	100.0%	1,268	100.0%
Bering Land Bridge NPRES	3,000	-19.8%	750	-19.8%
Cape Krusenstern NM	3,947	33.3%	700	-5.4%
Denali NP & PRES	386,867	3.9%	496,590	2.5%
Gates of the Arctic NP & PRES	8,166	-1.2%	12,880	-49.0%
Glacier Bay NP & PRES	442,607	9.7%	494,779	11.9%
Katmai NP & PRES	51,399	13.0%	58,938	49.7%
Kenai Fjords NP	290,673	10.1%	78,177	14.4%
Klondike Gold Rush NHP	693,883	2.0%	226,995	-2.1%
Kobuk Valley NP	6,309	13.7%	1,673	-9.6%
Lake Clark NP & PRES	6,190	-45.4%	6,308	-14.8%
Noatak NPRES	3,927	87.0%	3,084	10.1%
Sitka NHP	197,809	23.7%	10,087	23.7%
Wrangell-St Elias NP & PRES	29,252	5.0%	112,133	5.0%
Yukon-Charley Rivers NPRES	4,072	-8.5%	30,547	4.4%
Subtotal Alaska	2,128,478	6.9%	1,534,909	5.9%
ARIZONA				
Canyon de Chelly NM	852,048	0.8%	518,834	120.0%
Casa Grande Ruins NM	151,185	0.3%	10,709	30.0%
Chiricahua NM	102,541	39.0%	37,938	18.8%
Coronado NMEM	87,183	-3.7%	10,130	-3.8%
Fort Bowie NHS	9,390	2.4%	1,565	2.4%
Glen Canyon NRA	211,189	8.1%	387,588	12.5%
Grand Canyon NP	4,575,124	7.9%	5,901,337	7.8%
Hubbell Trading Post NHS	202,572	-25.3%	8,722	-25.3%
Lake Mead NRA	2,255,986	2.7%	1,624,373	7.8%
Montezuma Castle NM	823,489	-3.6%	68,624	-3.6%
Navajo NM	78,603	-13.3%	16,459	-8.5%
Organ Pipe Cactus NM	156,107	-14.3%	78,421	-23.2%
Petrified Forest NP	666,978	-18.3%	132,477	-3.1%
Pipe Spring NM	64,735	2.8%	5,395	2.8%
Saguaro NP	749,014	4.6%	92,843	8.5%
Sunset Crater Volcano NP	183,198	4.2%	19,083	4.2%
Tonto NM	74,006	-6.1%	7,432	-2.4%
Tumacacori NHP	56,189	-4.5%	3,121	-4.5%
Tuzigoot NM	124,347	-0.9%	7,772	-0.9%
Walnut Canyon NM	122,064	5.8%	13,508	5.8%
Wupatki NM	245,225	12.8%	40,961	12.6%
Subtotal Arizona	11,791,173	1.9%	8,987,292	6.9%

Table 9: 1999 Recreation Visits / Visitor Days by State (cont.)

PARKS BY STATE	RECREATION VISITS	PERCENT CHANGE	RECREATION VISITOR DAYS	PERCENT CHANGE
ARKANSAS				
Arkansas Post NMEM	49,087	-5.3%	6,136	-5.4%
Buffalo NR	796,279	22.3%	527,203	11.2%
Fort Smith NHS	35,880	-14.3%	3,977	-14.3%
Hot Springs NP	1,384,469	-7.5%	79,361	-7.1%
Pea Ridge NMP	95,410	19.3%	15,902	19.3%
Subtotal Arkansas	2,361,125	0.0%	632,579	8.3%
CALIFORNIA				
Cabrillo NM	1,167,486	6.6%	142,897	7.6%
Channel Islands NP	607,057	5.7%	589,420	8.8%
Death Valley NP	1,227,583	4.2%	750,731	3.3%
Devils Postpile NM	152,642	26.0%	52,873	27.4%
Eugene O'Neill NHS	3,400	-6.0%	910	-2.9%
Fort Point NHS	1,682,903	0.8%	82,822	2.8%
Golden Gate NRA	14,048,085	0.0%	1,900,989	7.7%
John Muir NHS	30,992	3.1%	4,324	2.5%
Joshua Tree NP	1,316,340	-6.7%	779,068	-2.4%
Kings Canyon NP	559,534	3.6%	1,518,503	5.7%
Lassen Volcanic NP	353,756	11.2%	323,015	10.5%
Lava Beds NM	135,180	16.8%	31,875	19.3%
Mojave NPRES	391,694	4.6%	202,676	3.5%
Muir Woods NM	883,164	2.6%	98,105	2.6%
Pinnacles NM	164,854	74.2%	49,956	74.3%
Point Reyes NS	2,300,631	-7.1%	960,988	-7.4%
Redwood NP	369,726	-3.5%	224,996	-0.8%
San Francisco Maritime NHP	3,535,315	0.0%	329,587	-2.0%
Santa Monica Mountains NRA	555,529	7.6%	89,252	8.3%
Sequoia NP	873,229	1.4%	2,391,058	0.5%
Whiskeytown-Shasta-Trinity NRA	716,526	-4.8%	219,724	-1.7%
Yosemite NP	3,493,607	-4.5%	5,074,572	-3.0%
Subtotal California	34,569,233	-0.1%	15,818,341	0.8%
COLORADO				
Bent's Old Fort NHS	36,814	-10.4%	5,369	-10.4%
Black Canyon of the Gunnison NP	200,142	3.5%	79,233	1.4%
Colorado NM	297,113	1.9%	76,775	-0.5%
Curecanti NRA	1,044,523	7.3%	403,474	3.9%
Dinosaur NM	303,949	-2.3%	143,117	-0.3%
Florissant Fossil Beds NM	81,510	2.2%	8,473	3.0%
Great Sand Dunes NM	286,745	2.5%	145,834	7.6%
Hovenweep NM	20,941	100.8%	4,771	71.0%
Mesa Verde NP	635,736	5.2%	429,459	7.4%
Rocky Mountain NP	3,186,323	5.0%	1,925,378	5.1%
Subtotal Colorado	6,093,796	4.7%	3,221,883	4.9%
CONNECTICUT				
Weir Farm NHS	15,058	27.1%	2,224	31.5%
Subtotal Connecticut	15,058	27.1%	2,224	31.5%

Abbreviations are defined on page 48
 DOI, NPS, Public Use Statistics Office

Table 9: 1999 Recreation Visits / Visitor Days by State (cont.)

PARKS BY STATE	RECREATION VISITS	PERCENT CHANGE	RECREATION VISITOR DAYS	PERCENT CHANGE
DISTRICT OF COLUMBIA				
Chesapeake and Ohio Canal NHP	1,799,379	6.7%	933,467	9.9%
Ford's Theatre NHS	1,159,435	-5.0%	96,960	-3.8%
Franklin Delano Roosevelt MEM	3,453,171	-18.9%	143,882	-18.9%
Frederick Douglass NHS	35,319	13.6%	2,310	-10.8%
Korean War Veterans MEM	3,249,688	-2.6%	135,404	-2.6%
Lincoln MEM	4,099,480	-6.2%	170,812	-6.2%
L. B. Johnson MEM Grove of the Potomac	537,685	-5.3%	22,404	-5.3%
Mary McLeod Bethune Council House NHS	6,577	-15.1%	1,096	-15.1%
National Capital Parks Central	1,432,569	13.3%	86,245	28.0%
National Capital Parks East	990,128	-31.7%	108,839	-41.3%
Pennsylvania Avenue NHS	270,211	1.7%	7,431	1.7%
President's Park	1,363,332	2.2%	148,388	7.7%
Rock Creek Park	1,998,719	-0.8%	228,474	-0.8%
Thomas Jefferson MEM	2,218,837	3.7%	92,452	3.7%
Vietnam Veterans MEM	4,442,238	-5.2%	185,093	-5.2%
Washington Monument	553,420	62.7%	46,118	62.7%
White House	1,015,395	-1.2%	63,925	-2.1%
Subtotal District of Columbia	28,625,583	-4.6%	2,473,300	-0.3%
FLORIDA				
Big Cypress NPRES	503,110	5.9%	119,444	-21.8%
Biscayne NP	442,585	9.8%	110,646	9.8%
Canaveral NS	846,512	20.4%	179,910	19.9%
Castillo de San Marcos NM	692,670	23.1%	43,292	23.1%
De Soto NMEM	275,505	13.7%	37,882	13.7%
Dry Tortugas NP	74,186	23.4%	73,038	23.8%
Everglades NP	1,073,982	-4.0%	470,006	-0.7%
Fort Caroline NMEM	176,230	36.3%	14,686	36.3%
Fort Matanzas NM	579,385	14.5%	48,996	14.7%
Gulf Islands NS	3,447,953	7.1%	854,244	3.8%
Timucuan Ecological & Historic PRES	637,012	0.6%	78,164	-7.0%
Subtotal Florida	8,749,130	8.6%	2,030,308	3.4%
GEORGIA				
Andersonville NHS	182,539	-19.1%	30,423	-19.1%
Chattahoochee River NRA	2,898,155	-1.3%	966,052	-1.3%
Chickamauga & Chattanooga NMP	464,062	-9.0%	72,747	-7.9%
Cumberland Island NS	44,127	-2.7%	67,717	-3.9%
Fort Frederica NM	281,437	0.8%	23,670	0.8%
Fort Pulaski NM	358,710	-0.7%	75,209	-0.4%
Jimmy Carter NHS	49,097	-1.1%	2,046	-1.1%
Kennesaw Mountain NBP	1,236,585	17.5%	175,110	14.5%
Martin Luther King, Jr., NHS	499,844	29.0%	69,943	37.0%
Ocmulgee NM	118,803	-1.2%	14,851	-1.2%
Subtotal Georgia	6,133,359	2.8%	1,497,768	0.8%
GUAM				
War in the Pacific NHP	138,575	3.4%	13,571	0.4%
Subtotal Guam	138,575	3.4%	13,571	0.4%

Abbreviations are defined on page 48
 DOI, NPS, Public Use Statistics Office

Table 9: 1999 Recreation Visits / Visitor Days by State (cont.)

PARKS BY STATE	RECREATION VISITS	PERCENT CHANGE	RECREATION VISITOR DAYS	PERCENT CHANGE
HAWAII				
Haleakala NP	1,963,187	32.9%	375,454	27.2%
Hawaii Volcanoes NP	1,502,855	11.1%	807,200	7.9%
Kalaupapa NHP	57,905	-30.6%	38,603	-30.6%
Kaloko-Honokohau NHP	47,328	-16.4%	11,190	-19.3%
Pu'uuhonua o Honaunau NHP	435,810	-11.5%	36,318	-11.5%
Puukohola Heiau NHS	58,317	1.7%	2,430	1.7%
USS Arizona MEM	1,402,418	3.2%	233,736	3.2%
Subtotal Hawaii	5,467,820	12.1%	1,504,931	8.8%
IDAHO				
City of Rocks NRES	72,341	18.9%	21,103	19.0%
Craters of the Moon NM	215,567	11.5%	53,991	9.8%
Hagerman Fossil Beds NM	13,070	-1.5%	1,634	-1.5%
Nez Perce NHP	187,252	-20.7%	20,991	-24.7%
Subtotal Idaho	488,230	-3.0%	97,719	1.3%
ILLINOIS				
Lincoln Home NHS	385,683	-5.5%	28,469	-5.5%
Subtotal Illinois	385,683	-5.5%	28,469	-5.5%
INDIANA				
George Rogers Clark NHP	146,413	2.3%	16,350	2.3%
Indiana Dunes NL	1,748,047	-17.1%	397,730	-9.6%
Lincoln Boyhood NMEM	146,914	-1.6%	13,773	-1.6%
Subtotal Indiana	2,041,374	-15.0%	427,853	-9.0%
IOWA				
Effigy Mounds NM	80,414	14.0%	16,753	14.0%
Herbert Hoover NHS	199,350	-14.0%	16,613	-14.0%
Subtotal Iowa	279,764	-7.5%	33,366	-1.9%
KANSAS				
Fort Larned NHS	42,572	-2.2%	7,095	-2.2%
Fort Scott NHS	42,250	-16.1%	5,282	-16.0%
Nicodemus NHS	18,900	1374.3%	1,575	1374.3%
Tallgrass Prairie NPRES	21,786	14.7%	3,631	14.7%
Subtotal Kansas	125,508	10.0%	17,583	4.5%
KENTUCKY				
Abraham Lincoln Birthplace NHS	251,204	0.1%	20,934	0.1%
Big South Fork NR & RA	344,090	0.4%	204,697	3.2%
Cumberland Gap NHP	1,434,425	8.8%	205,445	-2.2%
Mammoth Cave NP	1,710,983	-19.1%	378,444	-15.2%
Subtotal Kentucky	3,740,702	-7.1%	809,520	-7.6%
LOUISIANA				
Jean Lafitte NHP & PRES	874,754	4.7%	128,200	3.3%
Subtotal Louisiana	874,754	4.7%	128,200	3.3%
MAINE				
Acadia NP	2,602,227	0.3%	1,159,243	0.5%
Subtotal Maine	2,602,227	0.3%	1,159,243	0.5%

Table 9: 1999 Recreation Visits / Visitor Days by State (cont.)

PARKS BY STATE	RECREATION VISITS	PERCENT CHANGE	RECREATION VISITOR DAYS	PERCENT CHANGE
MARYLAND				
Antietam NB	268,897	-2.4%	54,743	6.1%
Assateague Island NS	624,357	3.0%	453,651	2.5%
Catoctin Mountain Park	459,002	-5.1%	162,711	-1.3%
Chesapeake and Ohio Canal NHP	190,523	6.7%	98,838	9.9%
Clara Barton NHS	10,438	-13.0%	870	-13.0%
Fort McHenry NM & HS	682,012	-0.4%	85,252	-0.4%
Fort Washington Park	248,131	-9.4%	80,847	-8.8%
Greenbelt Park	110,994	-24.8%	50,833	7.3%
Hampton NHS	20,509	-29.0%	1,753	-35.7%
Monocacy NB	14,834	-4.7%	1,855	471.8%
National Capital Parks East	110,014	-31.7%	12,093	-41.3%
Piscataway Park	239,008	2.3%	37,409	3.7%
Thomas Stone NHS	4,038	33.1%	168	32.9%
Subtotal Maryland	2,982,757	-3.9%	1,041,023	0.9%
MASSACHUSETTS				
Adams NHP	84,574	33.0%	6,415	30.6%
Boston African American NHS	391,235	1.8%	10,828	1.1%
Boston NHP	2,330,011	-13.6%	188,330	-25.7%
Cape Cod NS	4,915,414	2.3%	824,399	2.3%
Frederick Law Olmsted NHS	8,217	54.7%	1,370	54.7%
John Fitzgerald Kennedy NHS	23,047	111.0%	961	110.9%
Longfellow NHS	0	-100.0%	0	-100.0%
Lowell NHP	551,208	-0.6%	66,719	2.7%
Minute Man NHP	869,884	-9.9%	108,736	-9.9%
New Bedford Whaling NHP	246,920	941.4%	10,289	815.2%
Salem Maritime NHS	762,869	-4.9%	36,389	0.6%
Saugus Iron Works NHS	22,064	-3.7%	2,758	-3.7%
Springfield Armory NHS	16,250	6.6%	2,708	6.6%
Subtotal Massachusetts	10,221,693	-1.4%	1,259,902	-3.6%
MICHIGAN				
Isle Royale NP	23,493	-1.8%	128,932	1.0%
Pictured Rocks NL	442,916	-2.7%	193,380	-1.9%
Sleeping Bear Dunes NL	1,364,834	5.1%	613,515	5.2%
Subtotal Michigan	1,831,243	3.0%	935,827	3.1%
MINNESOTA				
Grand Portage NM	74,744	-0.6%	4,069	1.6%
Pipestone NM	92,605	0.9%	19,293	0.9%
Saint Croix NSR	164,253	-27.4%	104,709	-21.4%
Voyageurs NP	228,898	-1.3%	99,767	0.5%
Subtotal Minnesota	560,500	-10.4%	227,838	-10.9%
MISSISSIPPI				
Gulf Islands NS	1,149,317	7.1%	284,748	3.8%
Natchez NHP	365,677	123.0%	57,357	130.1%
Natchez Trace PKWY	5,114,369	10.0%	1,723,659	10.0%
Vicksburg NMP	1,021,860	1.6%	186,633	2.2%
Subtotal Mississippi	7,651,223	11.0%	2,252,397	10.0%

Abbreviations are defined on page 48
 DOI, NPS, Public Use Statistics Office

Table 9: 1999 Recreation Visits / Visitor Days by State (cont.)

PARKS BY STATE	RECREATION VISITS	PERCENT CHANGE	RECREATION VISITOR DAYS	PERCENT CHANGE
MISSOURI				
George Washington Carver NM	37,653	-15.3%	4,079	-15.3%
Harry S Truman NHS	48,847	-9.2%	3,569	-4.0%
Jefferson National Expansion MEM	3,481,042	1.8%	1,160,347	1.8%
Ozark National Scenic Riverways	1,536,301	-0.8%	374,856	5.8%
Ulysses S. Grant NHS	20,635	7.8%	2,580	7.8%
Wilson's Creek NB	177,721	1.0%	30,575	0.9%
Subtotal Missouri	5,302,199	0.8%	1,576,006	2.6%
MONTANA				
Big Hole NB	62,302	-4.1%	8,312	-7.5%
Bighorn Canyon NRA	126,367	-16.3%	38,804	-14.6%
Glacier NP	1,684,604	-8.0%	1,179,408	-8.0%
Grant-Kohrs Ranch NHS	23,502	-7.4%	2,409	-7.4%
Little Bighorn Battlefield NM	394,098	7.5%	32,860	7.5%
Yellowstone NP	1,597,004	0.3%	2,860,294	-0.3%
Subtotal Montana	3,887,877	-3.5%	4,122,087	-2.7%
NEBRASKA				
Agate Fossil Beds NM	18,117	3.0%	3,716	8.0%
Homestead NM of America	41,510	6.7%	5,934	8.0%
Scotts Bluff NM	141,453	-0.1%	22,397	-0.1%
Subtotal Nebraska	201,080	1.5%	32,047	2.2%
NEVADA				
Great Basin NP	90,119	12.1%	88,636	24.0%
Lake Mead NRA	6,767,957	2.7%	4,873,119	7.8%
Subtotal Nevada	6,858,076	2.8%	4,961,755	8.1%
NEW HAMPSHIRE				
Saint-Gaudens NHS	29,031	-20.0%	4,660	-20.8%
Subtotal New Hampshire	29,031	-20.0%	4,660	-20.8%
NEW JERSEY				
Delaware Water Gap NRA	3,516,933	-1.3%	1,323,524	0.5%
Edison NHS	26,010	-57.6%	3,074	-54.0%
Gateway NRA	1,362,720	-4.4%	360,070	51.6%
Morristown NHP	601,925	10.8%	139,772	9.2%
Subtotal New Jersey	5,507,588	-1.5%	1,826,440	8.2%

Table 9: 1999 Recreation Visits / Visitor Days by State (cont.)

PARKS BY STATE	RECREATION VISITS	PERCENT CHANGE	RECREATION VISITOR DAYS	PERCENT CHANGE
NEW MEXICO				
Aztec Ruins NM	58,318	-7.8%	7,290	-7.8%
Bandelier NM	332,764	-6.2%	115,527	0.3%
Capulin Volcano NM	65,278	-6.9%	7,690	-7.6%
Carlsbad Caverns NP	514,418	-1.5%	166,744	-3.0%
Chaco Culture NHP	83,337	-0.6%	68,808	-14.5%
El Malpais NM	109,008	14.7%	37,310	13.2%
El Morro NM	80,529	0.7%	16,748	-2.6%
Fort Union NM	16,022	3.6%	1,575	3.6%
Gila Cliff Dwellings NM	51,539	-0.1%	4,295	-0.1%
Pecos NHP	37,886	25.6%	4,306	31.6%
Petroglyph NM	72,604	-6.4%	6,157	-6.1%
Salinas Pueblo Missions NM	39,962	1.3%	6,903	0.5%
White Sands NM	553,948	-6.6%	61,385	1.9%
Subtotal New Mexico	2,015,613	-2.9%	504,738	-2.3%
NEW YORK				
Castle Clinton NM	4,467,492	1.8%	187,619	1.7%
Eleanor Roosevelt NHS	65,703	-23.0%	8,213	-23.0%
Federal Hall NMEM	211,482	-16.1%	11,408	-13.1%
Fire Island NS	559,764	0.2%	196,699	-5.0%
Fort Stanwix NM	51,228	11.3%	6,404	11.3%
Gateway NRA	5,450,886	-4.4%	1,440,281	51.6%
General Grant NMEM	110,971	4.8%	5,974	-16.4%
Hamilton Grange NMEM	43,887	31.4%	2,929	37.8%
Home of Franklin D. Roosevelt NHS	135,701	-17.0%	20,824	-18.5%
Martin Van Buren NHS	20,325	1.2%	1,773	-0.5%
Sagamore Hill NHS	67,193	-26.1%	13,999	-26.1%
Saint Paul's Church NHS	7,442	-7.8%	919	-14.1%
Saratoga NHP	158,602	-6.8%	34,645	-7.7%
Statue of Liberty NM	5,370,015	3.3%	1,342,504	3.3%
Theodore Roosevelt Birthplace NHS	23,495	0.2%	2,059	1.3%
Theodore Roosevelt Inaugural NHS	13,315	5.9%	3,097	-0.4%
Upper Delaware Scenic & Recreational River	177,178	21.3%	62,260	18.9%
Vanderbilt Mansion NHS	313,863	-18.1%	38,414	-15.4%
Women's Rights NHP	36,672	-50.6%	2,725	-54.1%
Subtotal New York	17,285,214	-1.0%	3,382,746	17.7%
NORTH CAROLINA				
Blue Ridge PKWY	12,298,842	4.3%	6,406,508	3.6%
Cape Hatteras NS	2,634,587	-3.8%	989,047	-5.3%
Cape Lookout NS	553,243	54.8%	194,946	14.0%
Carl Sandburg Home NHS	36,442	-3.9%	3,969	-5.5%
Fort Raleigh NHS	305,305	-14.7%	43,875	-10.0%
Great Smoky Mountains NP	4,524,783	2.9%	2,825,355	2.3%
Guilford Courthouse NMP	740,024	-1.8%	32,344	-2.9%
Moore's Creek NB	81,574	56.2%	4,249	56.2%
Wright Brothers NMEM	375,681	-10.4%	31,307	-10.4%
Subtotal North Carolina	21,550,481	3.1%	10,531,600	2.4%

Abbreviations are defined on page 48
 DOI, NPS, Public Use Statistics Office

Table 9: 1999 Recreation Visits / Visitor Days by State (cont.)

PARKS BY STATE	RECREATION VISITS	PERCENT CHANGE	RECREATION VISITOR DAYS	PERCENT CHANGE
NORTH DAKOTA				
Fort Union Trading Post NHS	20,612	4.5%	2,137	4.2%
Knife River Indian Villages NHS	32,455	38.0%	4,438	38.9%
Theodore Roosevelt NP	431,311	-3.8%	105,467	1.8%
Subtotal North Dakota	484,378	-1.5%	112,042	3.0%
OHIO				
Cuyahoga Valley NRA	3,324,284	-4.1%	810,835	-5.1%
Dayton Aviation Heritage NHP	32,882	-14.2%	5,480	-14.2%
Hopewell Culture NHP	29,282	-17.7%	3,724	-10.3%
James A. Garfield NHS	24,059	-7.1%	4,010	-7.1%
Perry's Victory and INT'L Peace MEM	179,542	-3.3%	16,566	-0.6%
William Howard Taft NHS	5,960	-16.8%	497	-16.8%
Subtotal Ohio	3,596,009	-4.4%	841,112	-5.1%
OKLAHOMA				
Chickasaw NRA	1,602,065	-0.8%	527,605	-2.3%
Subtotal Oklahoma	1,602,065	-0.8%	527,605	-2.3%
OREGON				
Crater Lake NP	417,992	-11.4%	221,874	-7.5%
Fort Clatsop NMEM	211,494	-9.7%	28,899	25.5%
John Day Fossil Beds NM	99,274	-0.7%	9,896	-0.7%
Oregon Caves NM	91,129	5.4%	29,998	0.5%
Subtotal Oregon	819,889	-8.1%	290,667	-4.0%
PENNSYLVANIA				
Allegheny Portage Railroad NHS	111,391	0.3%	10,097	0.1%
Delaware Water Gap NRA	1,436,494	-1.3%	540,595	0.5%
Edgar Allan Poe NHS	16,796	20.3%	1,400	20.3%
Eisenhower NHS	73,347	-4.5%	10,076	-4.6%
Fort Necessity NB	85,438	-12.6%	10,178	1.9%
Friendship Hill NHS	24,558	-11.4%	4,426	-18.0%
Gettysburg NMP	1,641,838	-3.5%	418,311	-5.2%
Hopewell Furnace NHS	74,303	-14.1%	7,430	-14.1%
Independence NHP	3,067,187	2.3%	385,499	1.4%
Johnstown Flood NMEM	120,901	-11.5%	10,166	-12.7%
Steamtown NHS	178,208	-3.8%	22,276	-3.8%
Thaddeus Kosciuszko NMEM	6,130	2.3%	128	2.2%
Upper Delaware Scenic & Recreational River	177,178	21.3%	62,260	18.9%
Valley Forge NHP	1,308,986	-26.6%	221,914	-26.3%
Subtotal Pennsylvania	8,322,755	-5.7%	1,704,756	-4.9%
PUERTO RICO				
San Juan NHS	950,141	6.4%	152,046	9.5%
Subtotal Puerto Rico	950,141	6.4%	152,046	9.5%
RHODE ISLAND				
Roger Williams NMEM	60,916	6.6%	4,293	7.0%
Subtotal Rhode Island	60,916	6.6%	4,293	7.0%

Table 9: 1999 Recreation Visits / Visitor Days by State (cont.)

PARKS BY STATE	RECREATION VISITS	PERCENT CHANGE	RECREATION VISITOR DAYS	PERCENT CHANGE
SOUTH CAROLINA				
Charles Pinckney NHS	32,174	-23.7%	5,362	-23.7%
Congaree Swamp NM	82,223	-12.3%	22,547	-8.8%
Cowpens NB	186,373	3.1%	9,001	7.6%
Fort Sumter NM	301,420	-10.0%	57,190	80.5%
Kings Mountain NMP	254,158	0.3%	21,702	0.3%
Ninety Six NHS	27,900	-12.4%	2,906	-12.4%
Subtotal South Carolina	884,248	-5.6%	118,708	22.7%
SOUTH DAKOTA				
Badlands NP	950,453	-6.9%	358,762	-3.1%
Jewel Cave NM	134,834	2.9%	12,952	2.9%
Mount Rushmore NMEM	1,972,289	-2.1%	216,403	-2.1%
Wind Cave NP	761,717	-10.4%	209,834	-9.3%
Subtotal South Dakota	3,819,293	-4.9%	797,951	-4.5%
TENNESSEE				
Andrew Johnson NHS	51,779	-14.0%	2,764	-7.3%
Big South Fork NR & RA	516,134	0.4%	307,046	3.2%
Chickamauga & Chattanooga NMP	464,062	-9.0%	72,747	-7.9%
Fort Donelson NB	225,604	-0.1%	13,041	0.8%
Great Smoky Mountains NP	5,758,815	2.9%	3,595,907	2.3%
Natchez Trace PKWY	831,085	10.0%	280,095	10.0%
Obed Wild and Scenic River	245,899	-1.5%	89,601	-3.3%
Shiloh NMP	357,532	8.7%	51,292	12.0%
Stones River NB	191,559	2.1%	18,894	-1.0%
Subtotal Tennessee	8,642,469	2.6%	4,431,387	2.6%
TEXAS				
Alibates Flint Quarries NM	3,047	-7.5%	635	-7.5%
Amistad NRA	1,164,166	3.0%	733,381	3.0%
Big Bend NP	327,649	-3.2%	764,053	-1.3%
Big Thicket NPRES	60,193	0.2%	18,838	-4.7%
Chamizal NMEM	162,495	-12.9%	20,758	-4.0%
Fort Davis NHS	60,419	-6.8%	8,546	-11.9%
Guadalupe Mountains NP	219,591	-3.7%	48,915	3.2%
Lake Meredith NRA	1,779,138	8.7%	447,330	4.9%
Lyndon B. Johnson NHP	122,116	-1.7%	30,164	-0.6%
Padre Island NS	630,562	-10.9%	365,616	-12.7%
Rio Grande Wild and Scenic River	678	46.8%	9,807	51.6%
San Antonio Missions NHP	1,224,178	9.4%	158,622	13.0%
Subtotal Texas	5,754,232	2.8%	2,606,665	0.0%

Table 9: 1999 Recreation Visits / Visitor Days by State (cont.)

PARKS BY STATE	RECREATION VISITS	PERCENT CHANGE	RECREATION VISITOR DAYS	PERCENT CHANGE
UTAH				
Arches NP	869,980	3.9%	315,646	2.1%
Bryce Canyon NP	1,081,521	-7.3%	727,517	-3.4%
Canyonlands NP	446,160	2.2%	375,245	0.1%
Capitol Reef NP	680,153	3.7%	117,663	4.7%
Cedar Breaks NM	597,460	3.2%	104,531	4.2%
Dinosaur NM	106,793	-2.3%	50,284	-0.3%
Glen Canyon NRA	2,428,671	8.1%	4,457,264	12.5%
Golden Spike NHS	47,525	2.9%	9,761	3.1%
Hovenweep NM	26,652	100.8%	6,073	71.0%
Natural Bridges NM	129,173	2.2%	59,868	3.7%
Rainbow Bridge NM	234,550	19.7%	29,319	19.7%
Timpanogos Cave NM	122,778	3.1%	27,878	3.4%
Zion NP	2,449,664	3.4%	1,338,308	3.2%
Subtotal Utah	9,221,080	3.6%	7,619,357	7.6%
VERMONT				
Marsh-Billings Rockefeller NHP	44,964	98.5%	7,494	98.5%
Subtotal Vermont	44,964	98.5%	7,494	98.5%
VIRGIN ISLANDS				
Christiansted NHS	104,081	-2.9%	4,529	-3.5%
Virgin Islands NP	425,345	-23.6%	217,989	-23.6%
Subtotal Virgin Islands	529,426	-25.5%	222,518	-28.3%
VIRGINIA				
Appomattox Court House NHP	198,665	-1.6%	13,712	-1.6%
Arlington House	476,911	-6.7%	19,872	-6.7%
Assateague Island NS	1,267,635	3.0%	921,048	2.5%
Blue Ridge PKWY	7,538,000	4.3%	3,926,569	3.6%
Booker T. Washington NM	22,623	17.7%	3,583	15.2%
Colonial NHP	3,136,262	0.4%	289,494	0.2%
Fredericksburg & Spotsylvania CNTYBM NMP	480,820	6.9%	54,387	8.4%
George Washington Birthplace NM	127,449	24.6%	21,242	24.6%
George Washington Memorial PKWY	6,946,945	5.5%	658,321	4.2%
Maggie L. Walker NHS	9,645	2.6%	402	2.5%
Manassas NBP	815,338	-16.2%	50,959	-16.2%
Petersburg NB	148,676	-4.7%	11,791	-3.5%
Prince William Forest Park	145,993	-10.0%	184,232	6.8%
Richmond NBP	87,957	7.0%	16,483	-1.2%
Shenandoah NP	1,339,286	-9.1%	799,432	-6.8%
Theodore Roosevelt Island	188,431	43.0%	28,265	43.0%
Wolf Trap Farm Park for the Performing Arts	549,491	5.0%	183,164	5.0%
Subtotal Virginia	23,480,127	2.3%	7,182,956	2.2%

Table 9: 1999 Recreation Visits / Visitor Days by State (cont.)

PARKS BY STATE	RECREATION VISITS	PERCENT CHANGE	RECREATION VISITOR DAYS	PERCENT CHANGE
WASHINGTON				
Fort Vancouver NHS	377,650	3.4%	42,053	-6.4%
Klondike Gold Rush NHP	116,012	7.3%	7,251	7.3%
Lake Chelan NRA	50,087	9.4%	55,791	11.4%
Lake Roosevelt NRA	1,403,793	-9.1%	474,059	-6.0%
Mount Rainier NP	1,291,397	-4.6%	1,213,637	-8.1%
North Cascades NP	21,488	-34.4%	28,278	-21.4%
Olympic NP	3,364,266	-5.9%	1,477,106	-7.5%
Ross Lake NRA	333,944	-21.5%	145,617	-14.1%
San Juan Island NHP	270,671	8.1%	20,380	8.1%
Whitman Mission NHS	74,954	-3.9%	6,246	-3.9%
Subtotal Washington	7,304,262	-6.1%	3,470,418	-7.6%
WEST VIRGINIA				
Bluestone NSR	58,610	2.9%	12,211	2.9%
Chesapeake and Ohio Canal NHP	127,015	6.7%	65,892	9.9%
Gauley River NRA	236,918	2.9%	80,271	3.3%
Harpers Ferry NHP	333,738	-10.1%	111,246	-10.1%
New River Gorge NR	1,186,501	-0.9%	233,255	-0.4%
Subtotal West Virginia	1,942,782	-1.6%	502,875	-0.9%
WISCONSIN				
Apostle Islands NL	193,260	-18.4%	78,515	-23.2%
Saint Croix NSR	164,253	-27.4%	104,709	-21.4%
Subtotal Wisconsin	357,513	-22.8%	183,224	-22.2%
WYOMING				
Bighorn Canyon NRA	107,646	-16.3%	33,056	-14.6%
Devils Tower NM	395,892	-0.8%	97,915	2.2%
Fort Laramie NHS	56,065	5.5%	6,760	1.7%
Fossil Butte NM	22,043	-1.9%	3,075	-2.6%
Grand Teton NP	2,680,025	-2.8%	1,610,056	-0.8%
John D. Rockefeller Jr., MEM PKWY	1,380,833	-1.0%	232,304	1.6%
Yellowstone NP	1,534,377	0.3%	2,748,125	-0.3%
Subtotal Wyoming	6,176,881	-1.7%	4,731,291	-0.4%
NPS TOTAL	287,130,879	0.1%	108,771,421	2.5%

Table 10: 1999 Overnight Stays by State

STATES AND PARK NAMES	CONCESSIONER		NPS CAMPGROUNDS		BACK-CTRY	MISC	NON-REC	TOTAL
	LODGING	CAMPGDS	TENTS	RVS				
ALASKA								
Aniakchak NM & PRES	-	-	-	-	620	-	-	620
Denali NP & PRES	19,912	-	28,112	38,610	36,026	1,349	-	124,009
Gates of the Arctic NP & PRES	-	-	-	-	6,282	-	512	6,794
Glacier Bay NP & PRES	18,252	-	1,280	-	7,149	7,515	5,072	39,268
Katmai NP & PRES	4,046	-	3,025	-	12,952	1,777	2,700	24,500
Kenai Fjords NP	-	-	1,628	86	2,989	-	-	4,703
Klondike Gold Rush NHP	-	-	1,627	759	4,207	-	-	6,593
Lake Clark NP & PRES	-	-	-	-	2,878	-	-	2,878
Wrangell-St Elias NP & PRES	-	-	-	-	6,584	5	2	6,591
Yukon-Charley Rivers NPRES	-	-	-	-	14,934	-	-	14,934
Subtotal Alaska	42,210	0	35,672	39,455	94,621	10,646	8,286	230,890
ARIZONA								
Canyon de Chelly NM	35,365	-	23,436	29,478	1,746	2,785	-	92,810
Chiricahua NM	-	-	5,094	6,019	-	1,318	-	12,431
Grand Canyon NP	590,659	41,964	178,966	131,603	154,478	34,085	-	1,131,755
Navajo NM	-	-	1,762	1,229	404	24	-	3,419
Organ Pipe Cactus NM	-	-	5,819	36,378	2,234	874	-	45,305
Petrified Forest NP	-	-	-	-	464	-	1,554	2,018
Saguaro NP	-	-	-	-	1,594	-	-	1,594
Wupatki NM	-	-	-	-	60	-	-	60
Subtotal Arizona	626,024	41,964	215,077	204,707	160,980	39,086	1,554	1,289,392
ARKANSAS								
Buffalo National River	7,221	-	63,845	19,873	45,496	23,882	-	160,317
Hot Springs NP	-	-	3,152	3,671	-	-	-	6,823
Subtotal Arkansas	7,221	0	66,997	23,544	45,496	23,882	0	167,140
CALIFORNIA								
Channel Islands NP	-	-	-	-	9,459	92,987	61,415	163,861
Death Valley NP	32,306	3,036	50,368	153,734	-	100	-	239,544
Devils Postpile NM	-	-	3,645	1,926	-	-	-	5,571
Golden Gate NRA	52,786	-	3,088	-	683	24,914	-	81,471
Joshua Tree NP	-	-	134,982	55,785	6,383	56,492	-	253,642
Kings Canyon NP	38,868	-	86,076	37,192	72,314	6,591	-	241,041
Lassen Volcanic NP	5,649	-	44,196	20,481	7,471	5,710	-	83,507
Lava Beds NM	-	-	2,229	1,211	-	272	-	3,712
Mojave NPRES	-	-	5,493	-	-	1,336	-	6,829
Point Reyes NS	8,352	2,659	-	-	22,824	-	-	33,835
Redwood NP	5,439	-	9,545	49,214	1,594	4,127	-	69,919
San Francisco Maritime NHP	-	-	-	-	-	11,425	-	11,425
Santa Monica Mountains NRA	-	-	-	-	144	-	-	144
Sequoia NP	38,374	-	118,998	37,272	76,718	2,286	-	273,648
Whiskeytown-Shasta-Trinity NRA	-	18,510	-	1,268	2,218	16,563	-	38,559
Yosemite NP	782,944	-	465,787	192,596	87,189	22,442	-	1,550,958
Subtotal California	964,718	24,205	924,407	550,679	286,997	245,245	61,415	3,057,666

Table 10: 1999 Overnight Stays by State (continued)

STATES AND PARK NAMES	CONCESSIONER		NPS CAMPGROUNDS		BACK-CTRY	MISC	NON-REC	TOTAL
	LODGING	CAMPGDS	TENTS	RVS				
COLORADO								
Black Canyon of the Gunnison NP	-	-	7,419	3,268	1,597	-	-	12,284
Colorado NM	-	-	9,912	8,751	187	-	-	18,850
Curecanti NRA	-	-	18,512	58,188	573	87	-	77,360
Dinosaur NM	-	-	20,524	10,155	30,395	3,626	-	64,700
Great Sand Dunes NM	-	-	24,433	13,867	1,404	5,155	-	44,859
Mesa Verde NP	59,020	-	45,507	21,066	-	1,781	-	127,374
Rocky Mountain NP	-	-	97,992	63,567	41,417	46,186	-	249,162
Subtotal Colorado	59,020	0	224,299	178,862	75,573	56,835	0	594,589
DISTRICT OF COLUMBIA								
Chesapeake & Ohio Canal NHP	-	-	8,868	1,089	3,034	0	0	12,991
Subtotal District of Columbia	0	0	8,868	1,089	3,034	0	0	12,991
FLORIDA								
Big Cypress NPRES ⁷	-	-	3,031	13,270	10,158	-	-	26,459
Canaveral NS	-	-	-	-	2,142	-	-	2,142
Dry Tortugas NP	-	-	5,244	-	-	23,073	9,923	38,240
Everglades NP	39,811	-	15,722	20,337	20,237	3,257	-	99,364
Gulf Islands NS	-	-	36,498	117,501	4,233	7,861	4,410	170,503
Subtotal Florida	39,811	0	60,495	151,108	36,770	34,191	14,333	336,708
GEORGIA								
Chickamauga & Chattanooga NMP	-	-	-	-	-	1,722	-	1,722
Cumberland Island NS	-	-	13,362	-	7,626	-	-	20,988
Fort Pulaski NM	-	-	-	-	-	318	-	318
Kennesaw Mountain NBP	-	-	-	-	-	493	-	493
Subtotal Georgia	0	0	13,362	0	7,626	2,533	0	23,521
HAWAII								
Haleakala NP	-	-	17,583	-	2,317	4,228	-	24,128
Hawaii Volcanoes NP	33,815	-	9,727	385	4,527	72,314	-	120,768
Subtotal Hawaii	33,815	0	27,310	385	6,844	76,542	0	144,896
IDAHO								
City of Rocks NRES	-	-	-	-	2	-	-	2
Craters of the Moon NM	-	-	6,042	8,517	121	689	-	15,369
Subtotal Idaho	0	0	6,042	8,517	123	689	0	15,371
INDIANA								
Indiana Dunes NL	-	-	17,713	4,534	-	4,394	-	26,641
Subtotal Indiana	0	0	17,713	4,534	0	4,394	0	26,641
KENTUCKY								
Cumberland Gap NHP	-	-	3,788	6,027	1,860	3,508	-	15,183
Mammoth Cave NP	28,240	-	40,540	16,204	4,329	3,967	-	93,280
Subtotal Kentucky	28,240	0	44,328	22,231	6,189	7,475	0	108,463
MAINE								
Acadia NP	-	-	125,046	23,682	-	10,218	-	158,946
Subtotal Maine	0	0	125,046	23,682	0	10,218	0	158,946
MARYLAND								
Antietam NB	-	-	-	-	-	2,204	-	2,204
Catoctin Mountain Park	-	-	8,519	1,656	130	28,520	-	38,825
Greenbelt Park	-	-	9,726	8,629	-	-	-	18,355
Subtotal Maryland	0	0	18,245	10,285	130	30,724	0	59,384

Table 10: 1999 Overnight Stays by State (continued)

STATES AND PARK NAMES	CONCESSIONER		NPS CAMPGROUNDS		BACK-CTRY	MISC	NON-REC	TOTAL
	LODGING	CAMPGDS	TENTS	RVS				
MASSACHUSETTS								
Cape Cod NS	4,578	-	-	-	-	28,469	-	33,047
Subtotal Massachusetts	4,578	0	0	0	0	28,469	0	33,047
MICHIGAN								
Isle Royale NP	7,642	664	7,096	-	44,028	3,681	904	64,015
Pictured Rocks NL	-	-	13,088	4,233	13,173	-	-	30,494
Sleeping Bear Dunes NL	-	-	47,758	40,473	21,140	-	-	109,371
Subtotal Michigan	7,642	664	67,942	44,706	78,341	3,681	904	203,880
MINNESOTA								
Grand Portage NM	-	-	-	-	145	-	-	145
Voyageurs NP	1,473	-	-	-	16,732	-	-	18,205
Subtotal Minnesota	1,473	0	0	0	16,877	0	0	18,350
MISSISSIPPI								
Natchez Trace PKWY	-	-	7,857	17,874	-	-	-	25,731
Vicksburg NMP	-	-	-	-	-	626	-	626
Subtotal Mississippi	0	0	7,857	17,874	0	626	0	26,357
MISSOURI								
Ozark National Scenic Riverways	863	-	86,704	20,580	27,231	41,288	-	176,666
Subtotal Missouri	863	0	86,704	20,580	27,231	41,288	0	176,666
MONTANA								
Bighorn Canyon NRA	-	-	3,958	9,407	912	-	-	14,277
Glacier NP	131,088	-	98,094	78,778	26,209	-	-	334,169
Subtotal Montana	131,088	0	102,052	88,185	27,121	0	0	348,446
NEVADA								
Great Basin NP	-	-	17,940	14,555	265	-	-	32,760
Lake Mead NRA	60,138	224,403	129,181	164,410	372,427	147,814	264,750	1,363,123
Subtotal Nevada	60,138	224,403	147,121	178,965	372,692	147,814	264,750	1,395,883
NEW JERSEY								
Delaware Water Gap NRA	-	26,332	-	-	43,768	20,173	-	90,273
Subtotal New Jersey	0	26,332	0	0	43,768	20,173	0	90,273
NEW MEXICO								
Bandelier NM	-	-	10,012	6,030	2,393	2,920	-	21,355
Carlsbad Caverns NP	-	-	-	-	257	-	-	257
Chaco Culture NHP	-	-	15,015	4,597	-	198	-	19,810
El Malpais NM	-	-	-	-	649	-	-	649
El Morro NM	-	-	1,136	850	-	115	-	2,101
Salinas Pueblo Missions NM	-	-	-	-	-	19	-	19
White Sands NM	-	-	-	-	2,056	-	-	2,056
Subtotal New Mexico	0	0	26,163	11,477	5,355	3,252	0	46,247
NEW YORK								
Fire Island NS	-	-	3,435	-	-	52,793	-	56,228
Gateway NRA	-	-	-	-	-	7,462	-	7,462
Subtotal New York	0	0	3,435	0	0	60,255	0	63,690
NORTH CAROLINA								
Blue Ridge PKWY	63,426	21,979	62,606	50,840	7,183	1,294	-	207,328
Cape Hatteras NS	-	-	53,174	29,343	-	4,192	1,000	87,709
Cape Lookout NS	22,856	-	-	-	8,989	518	-	32,363
Subtotal North Carolina	86,282	21,979	115,780	80,183	16,172	6,004	1,000	327,400

Abbreviations are defined on page 48
DOI, NPS, Public Use Statistics Office

Table 10: 1999 Overnight Stays by State (continued)

STATES AND PARK NAMES	CONCESSIONER		NPS CAMPGROUNDS		BACK-CTRY	MISC	NON-REC	TOTAL
	LODGING	CAMPGDS	TENTS	RVS				
NORTH DAKOTA								
Theodore Roosevelt NP	-	-	9,894	15,681	1,465	2,093	-	29,133
Subtotal North Dakota	0	0	9,894	15,681	1,465	2,093	0	29,133
OHIO								
Cuyahoga Valley NRA	2,402	-	-	-	-	3,401	-	5,803
Perry's Victory & Int'l Peace MEM	-	-	-	-	-	2,600	-	2,600
Subtotal Ohio	2,402	0	0	0	0	6,001	0	8,403
OKLAHOMA								
Chickasaw NRA	-	-	51,175	29,399	-	25,743	-	106,317
Subtotal Oklahoma	0	0	51,175	29,399	0	25,743	0	106,317
OREGON								
Crater Lake NP	32,688	29,323	3,179	-	1,258	-	-	66,448
John Day Fossil Beds NM	-	-	-	-	-	300	-	300
Oregon Caves NM	5,412	-	-	-	-	-	-	5,412
Subtotal Oregon	38,100	29,323	3,179	0	1,258	300	0	72,160
PENNSYLVANIA								
Fort Necessity NB	-	-	-	-	-	122	-	122
Gettysburg NMP	-	-	-	-	-	28,393	-	28,393
Valley Forge NHP	-	-	-	-	-	2,500	-	2,500
Subtotal Pennsylvania	0	0	0	0	0	31,015	0	31,015
SOUTH CAROLINA								
Congaree Swamp NM	-	-	-	-	288	907	-	1,195
Cowpens NB	-	-	-	-	-	36	-	36
Kings Mountain NMP	-	-	-	-	69	-	-	69
Subtotal South Carolina	0	0	0	0	357	943	0	1,300
SOUTH DAKOTA								
Badlands NP	8,358	-	24,977	15,619	911	-	-	49,865
Wind Cave NP	-	-	5,757	4,594	289	-	-	10,640
Subtotal South Dakota	8,358	0	30,734	20,213	1,200	0	0	60,505
TENNESSEE								
Big South Fork NR & RA	17,688	-	13,477	26,394	5,717	4,281	-	67,557
Fort Donelson NB	-	-	-	-	-	260	-	260
Great Smoky Mountains NP	10,666	-	191,169	133,961	92,994	25,459	-	454,249
Obed Wild and Scenic River	-	-	3,299	185	1,343	-	-	4,827
Subtotal Tennessee	28,354	0	207,945	160,540	100,054	30,000	0	526,893
TEXAS								
Amistad NRA	-	-	6,535	14,702	2,969	978	-	25,184
Big Bend NP	47,580	11,429	47,320	35,919	40,059	35,895	-	218,202
Big Thicket NPRES	-	-	-	-	1,103	-	-	1,103
Guadalupe Mountains NP	-	-	11,000	6,565	3,399	2,694	-	23,658
Lake Meredith NRA	-	-	15,187	64,111	7,131	1,030	-	87,459
Padre Island NS	-	-	14,123	45,701	5,627	3,137	-	68,588
Rio Grande Wild and Scenic River	-	-	-	-	5,412	-	-	5,412
Subtotal Texas	47,580	11,429	94,165	166,998	65,700	43,734	0	429,606

Table 10: 1999 Overnight Stays by State (continued)

STATES AND PARK NAMES	CONCESSIONER		NPS CAMPGROUNDS		BACK-CTRY	MISC	NON-REC	TOTAL
	LODGING	CAMPGDS	TENTS	RVS				
UTAH								
Arches NP	-	-	26,984	15,520	817	5,754	-	49,075
Bryce Canyon NP	46,408	-	40,020	59,779	2,532	1,402	-	150,141
Canyonlands NP	-	-	22,251	7,836	72,148	8,923	-	111,158
Capitol Reef NP	-	-	16,445	20,708	2,272	2,041	-	41,466
Cedar Breaks NM	-	-	1,908	1,395	-	-	-	3,303
Glen Canyon NRA	194,194	119,910	8,409	5,623	25,211	1,701,782	110	2,055,239
Hovenweep NM	-	-	921	535	-	-	-	1,456
Natural Bridges NM	-	-	4,609	2,925	-	-	-	7,534
Zion NP	65,582	-	86,024	58,560	13,614	13,712	-	237,492
Subtotal Utah	306,184	119,910	207,571	172,881	116,594	1,733,614	110	2,656,864
VIRGIN ISLANDS								
Virgin Islands NP	19,587	19,515	-	-	-	121,935	12,194	173,231
Subtotal Virgin Islands	19,587	19,515	0	0	0	121,935	12,194	173,231
VIRGINIA								
Assateague Island NS	-	-	46,724	18,361	2,348	11,364	-	78,797
Prince William Forest Park	-	25,705	8,177	341	91	35,497	-	69,811
Shenandoah NP	106,568	-	81,993	40,032	43,913	-	-	272,506
Subtotal Virginia	106,568	25,705	136,894	58,734	46,352	46,861	0	421,114
WASHINGTON								
Lake Chelan NRA	9,016	-	-	-	5,763	7,892	-	22,671
Lake Roosevelt NRA	49,184	-	42,418	54,711	7,888	15,478	-	169,679
Mount Rainier NP	42,793	-	52,203	22,755	42,967	1,937	-	162,655
North Cascades NP	-	-	-	-	15,460	-	-	15,460
Olympic NP	71,814	8,453	121,635	78,458	118,331	322	-	399,013
Ross Lake NRA	6,031	-	21,119	14,964	15,555	1,227	-	58,896
Subtotal Washington	178,838	8,453	237,375	170,888	205,964	26,856	0	828,374
WEST VIRGINIA								
Gauley River NRA	-	-	2,040	1,567	-	-	-	3,607
New River Gorge NR	-	-	11,128	6,644	-	-	-	17,772
Subtotal West Virginia	0	0	13,168	8,211	0	0	0	21,379
WISCONSIN								
Apostle Islands NL	-	-	-	-	15,250	17,846	-	33,096
Saint Croix NSR	-	-	-	-	27,297	-	-	27,297
Subtotal Wisconsin	0	0	0	0	42,547	17,846	0	60,393
WYOMING								
Devils Tower NM	-	-	8,056	5,999	-	-	-	14,055
Grand Teton NP	236,011	49,860	122,731	117,148	32,169	20,573	-	578,492
J. D. Rockefeller Jr., MEM PKWY	29,183	35,949	-	-	2,011	1,482	-	68,625
Yellowstone NP	581,761	461,826	76,803	65,033	41,319	11,777	-	1,238,519
Subtotal Wyoming	846,955	547,635	207,590	188,180	75,499	33,832	0	1,899,691
NPS TOTAL	3,676,049	1,101,517	3,544,605	2,652,773	1,968,930	2,974,795	364,546	16,283,215

Figure 1: The Ten Most Visited Areas Account for 31% of all Recreation Visits in 1999

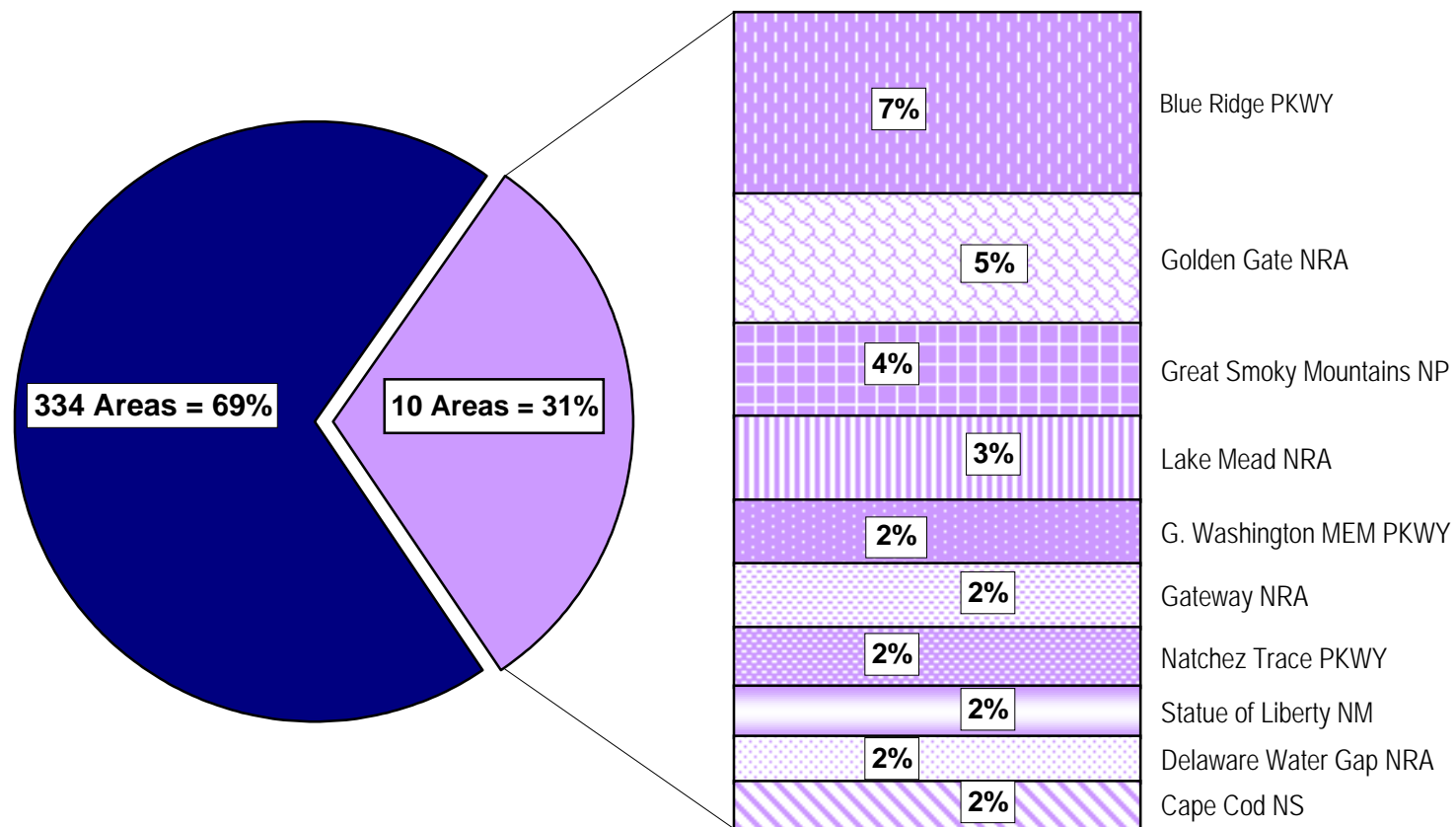


Figure 2: Recreation Visits by Month for 1998 and 1999

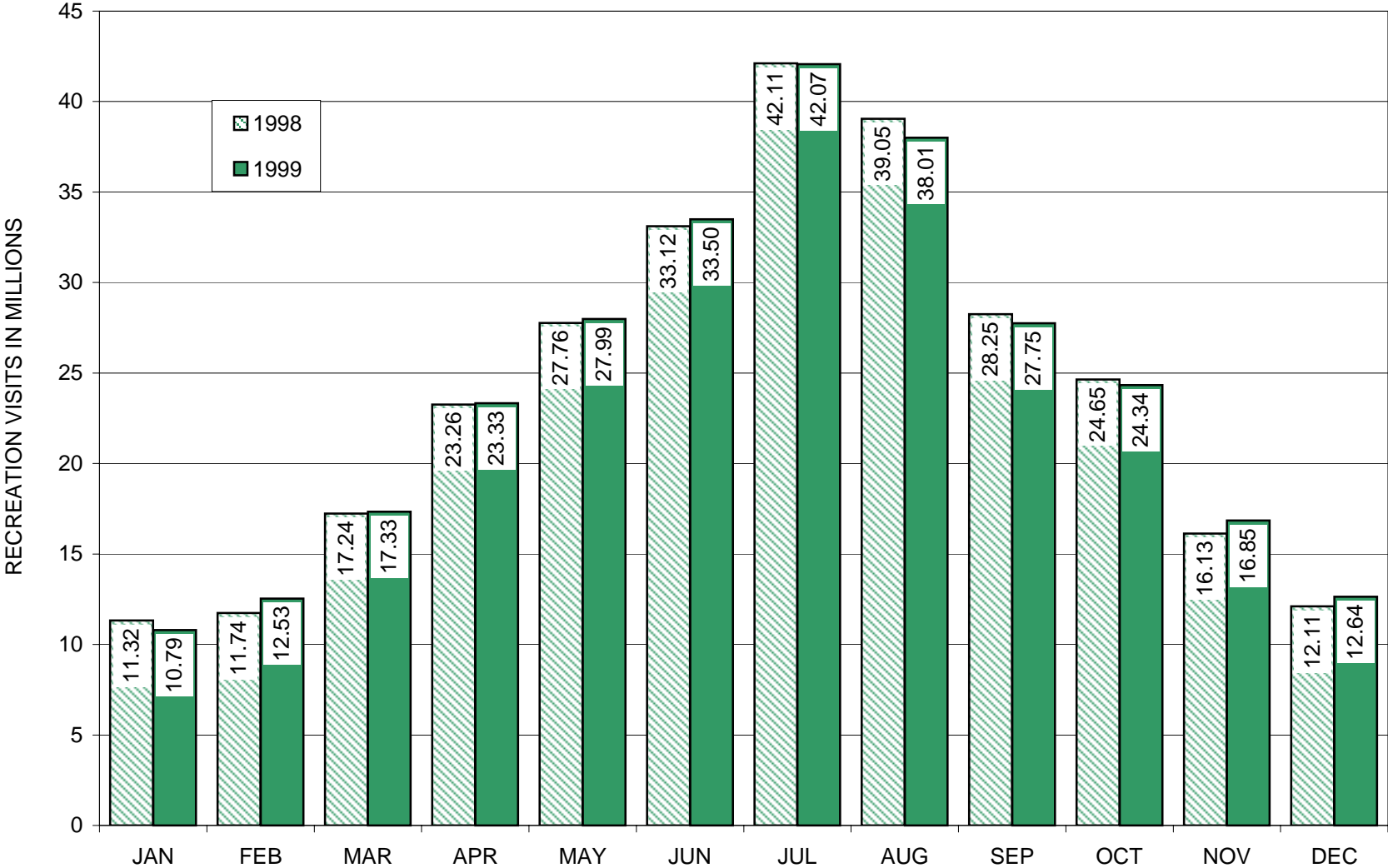
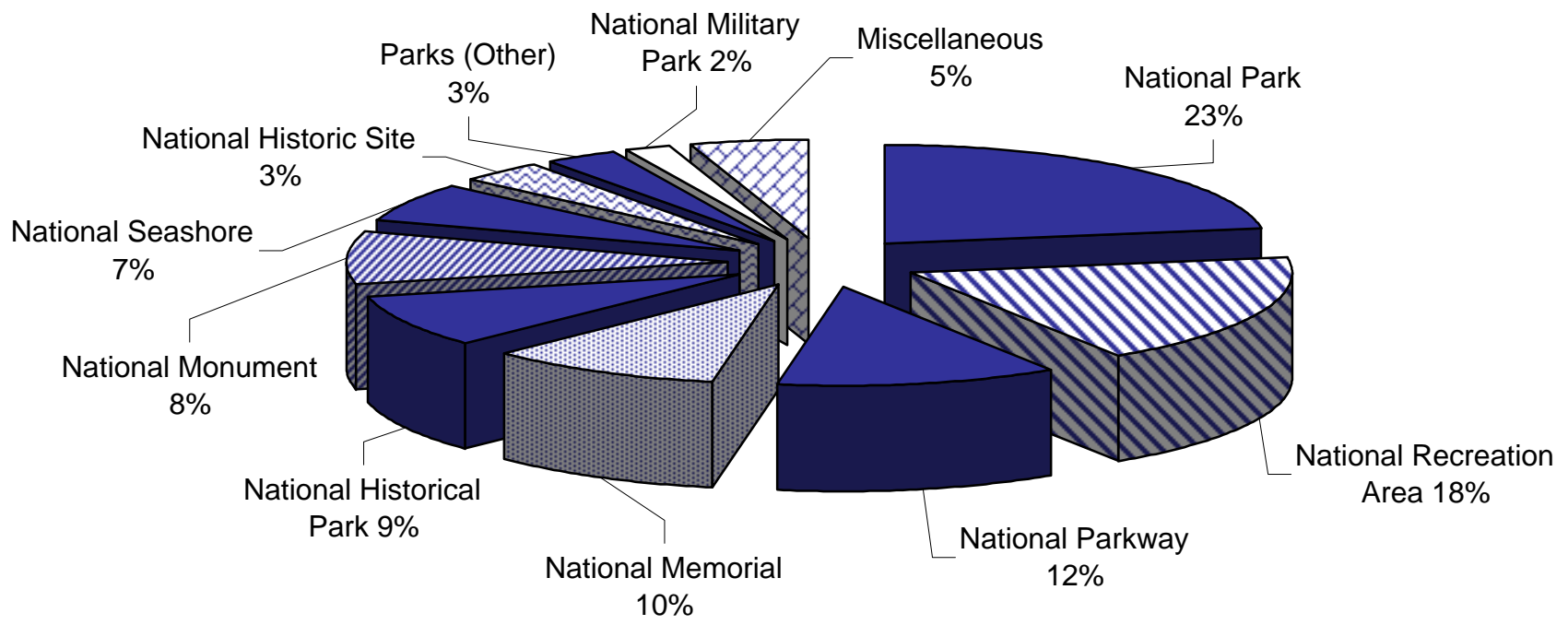


Figure 3: Percent of Recreation Visits by Type of Area in 1999



Miscellaneous Includes: NR, NL, NBP, NPRES, NB, NWSR, NRES
DOI, NPS, Public Use Statistics Office

Figure 4: Percent of Recreation Visits by Region in 1999

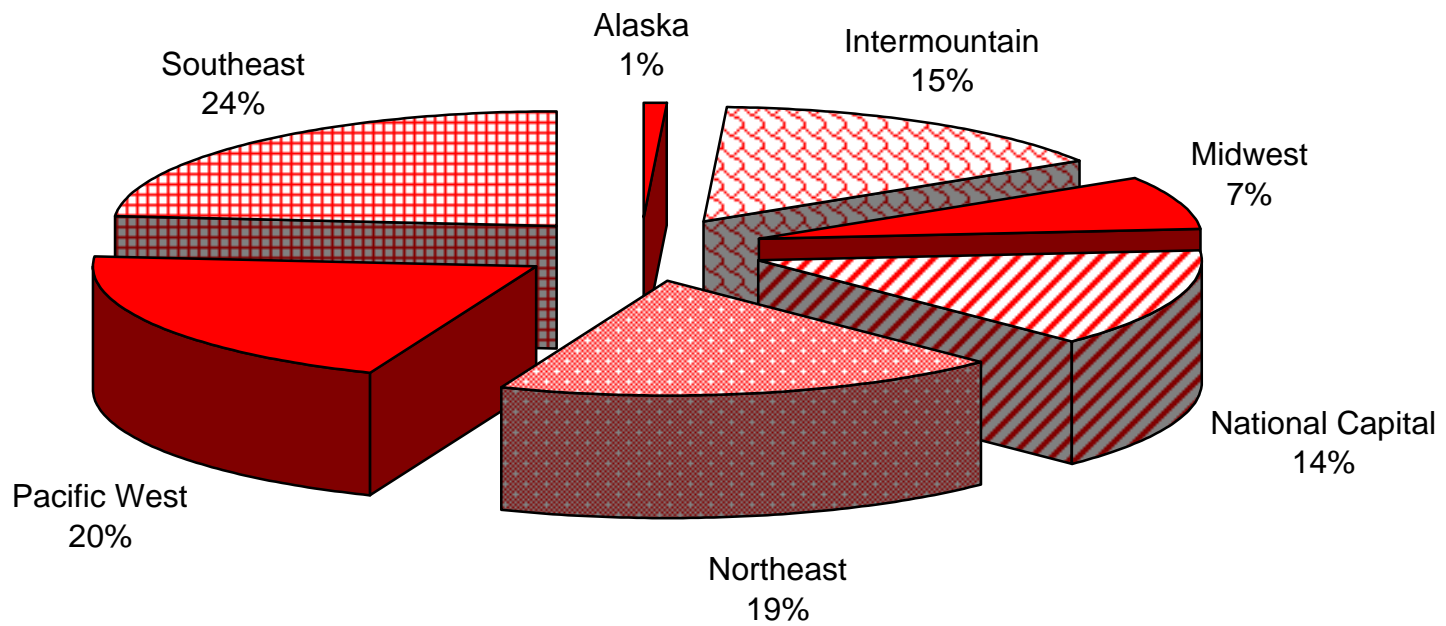


Figure 5: Percent of Recreation Visits by Population Center in 1999

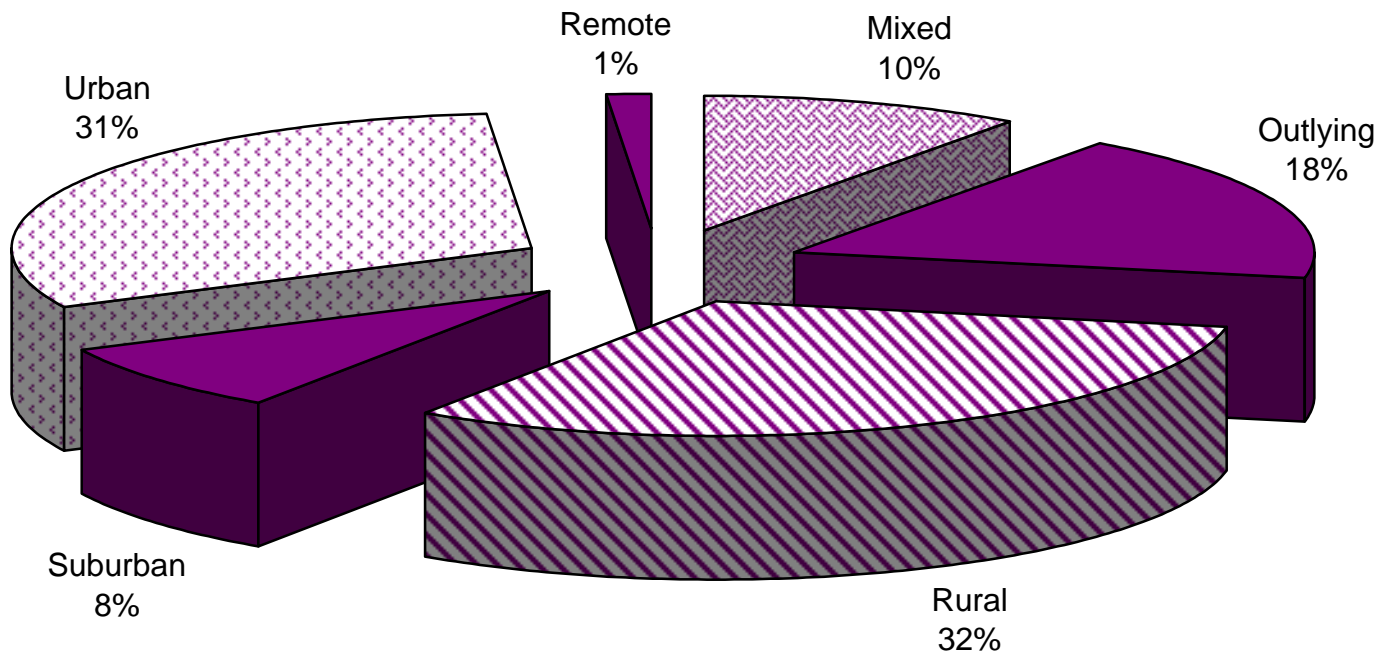
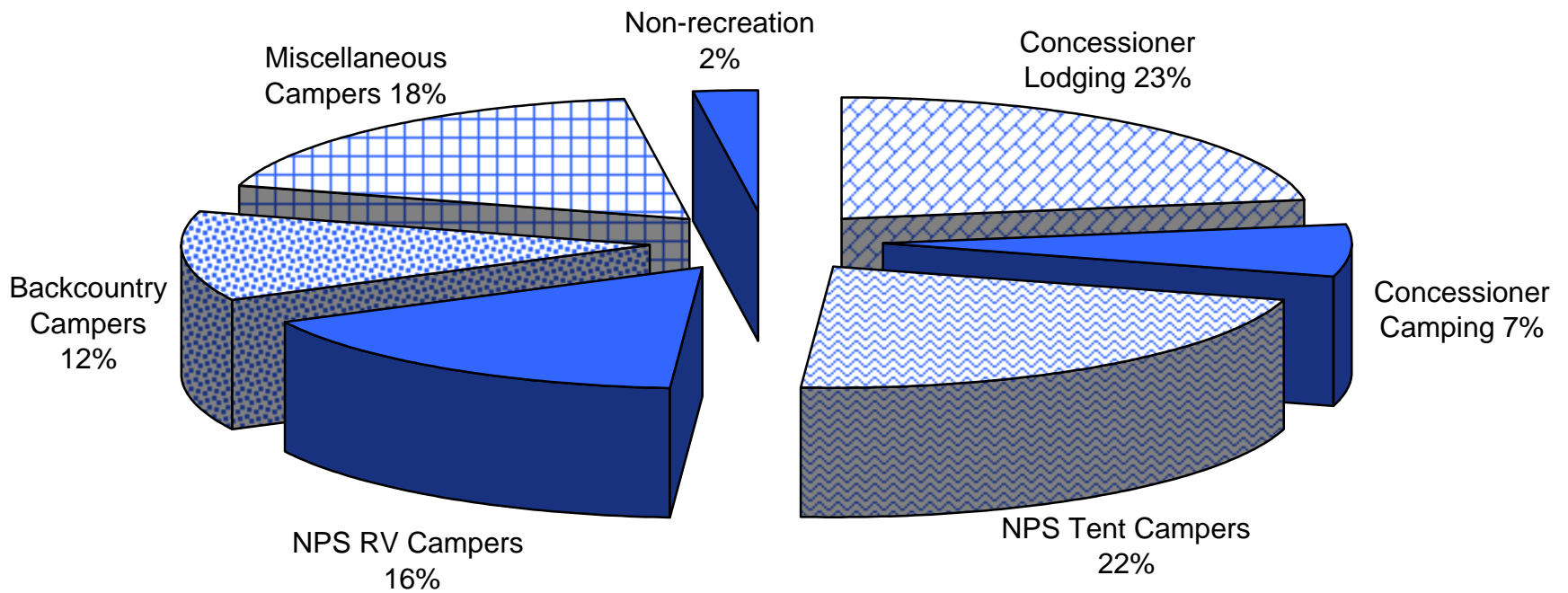


Figure 6: Overnight Stays by Type of Accommodation in 1999



ENDNOTES

Endnotes are defined with fixed numeric identifiers, which are meaningful to Park Service administration. Where a number is not identified there are no areas that fit the identification for 1999.

¹Redesignated areas:

- Black Canyon of the Gunnison NP from Black Canyon of the Gunnison NM

³Combined areas reporting data separately:

- Klondike Gold Rush NHP in Alaska, and Klondike Gold Rush NHP in Washington
- National Capital Parks Central, National Capital Parks East, and President's Park
- Constitution Gardens

⁴Changes in counting procedures (Data for the following areas may require special adjustments to be comparable with earlier data):

- Agate Fossil Beds NM (Discontinued reporting NON-REC)
- Arlington House
- Buffalo NR (New traffic counters)
- Cape Lookout NS (New traffic counters)
- Castillo de San Marcos NM (Changed calculation for grounds only)
- Fort Clatsop NMEM (Changed visitor hours)
- Fort Sumter NM (Changed visitor hours)
- Gateway NRA (New counting program)
- Great Basin NP (Changed visitor hours for overnight stays)
- Hopewell Culture NHP (Changed visitor hours)
- Kenai Fjords NP (Changed PPV from 2.1 to 3.1)
- Monocacy NB (Changed visitor hours)
- New Bedford Whaling NHP (Added new areas to the park)
- Organ Pipe Cactus NM (Began reporting NON-REC)
- Petrified Forest NP (Change in reporting REC visitors)
- Padre Island NS (Discontinued reporting NPS group campgrounds)

⁵Opening of additional areas, programs, or facilities (Data for the following areas may require special adjustments to be comparable with earlier data):

- Cape Krusenstern NM (New main visitor center with Kobuk Valley & Noatak)
- Cumberland Gap NHP (New area – “Pinnacle”)
- Fort Caroline NM (New area opened – “Spanish Pond”)
- Fort Matanzas NM (Added two new areas)
- Kobuk Valley NP (See Cape Krusenstern NM)
- Martin Luther King, Jr., NHS (Added new area – “Ebenezer Baptist Church”)
- Noatak NPRES (See Cape Krusenstern NM)
- Rocky Mountain NP (Overnight stays only: added new group campsite)
- Weir Farms National Historical Site (Increased Historic Art Tours)

ENDNOTES (continued)

⁶**Partial or temporary closing** (Data for the following areas may require special adjustments to be comparable with earlier data):

- Chickamauga & Chattanooga NMP (Construction on US-27)
- Edison NHS (Major construction for two years)
- Home of Franklin D. Roosevelt NHS (Closed for restoration)
- Longfellow NHS (Closed for restoration)
- Mammoth Cave NP (Highway 385 closed for construction)
- National Capital Parks East (Highway construction at Fort Dupont)
- Valley Forge NHP (Major highway construction)
- Washington Monument (Closed for restoration)
- Wind Cave NP (Construction on Highway 385)

⁷**Special events such as anniversaries, civic fairs, significant natural disasters, storm damage, etc.** (Data for the following areas require special adjustments to be comparable with earlier data):

- Big Cypress NPRES (Overnight stays only: hurricane damage)
- Padre Island NS (Hurricane damage)

⁸**New areas which are not reporting:**

- Minuteman Missile NHS

¹⁰**Areas that have stopped reporting:**

- Buck Island Reef NM

DEFINITIONS

AFFILIATED AREA – An area administered in connection with the National Park Service (NPS) that uses NPS assistance but is neither federally owned nor directly administered by the NPS.

BACKCOUNTRY – One or more primitive or wilderness areas in a park reached primarily by hiking, boating or horseback.

BUSES – Vehicles carrying ten or more passengers including commercial tour buses and school buses.

CAMPGROUND – An area of land designated and developed for use as a camp.

CATEGORY – NPS areas are categorized by their proximity to population centers in the following manner:

- **Mixed Area Park** – A park located in a mixture of Outlying Area, Rural Area, Suburban Area, and Urban Area.
- **Outlying Area Park** – A park located in a Metropolitan Statistical Area (MSA) with a population of less than one million people.
- **Remote Area Park** – A park located outside of any MSA and requiring special travel arrangements to reach.
- **Rural Area Park** – A park located outside of any MSA and accessible by paved highway, scheduled air or marine transportation service.
- **Suburban Area Park** – A park located outside the central city but still within an MSA with a population of greater than one million people.
- **Urban Area Park** – A park located within the central city of an MSA.

CLASSIFICATION – Designated name for areas administered by the NPS may be found in the publication, *The National Parks: Index 1999-2001*.

CONCESSIONER – A private company or an individual granted the privilege of providing facilities and services considered necessary by the NPS for accommodating visitors.

CONCESSIONER CAMPGROUND – An element of a concessioner operation involving services for overnight camping or equipment for camping.

CONCESSIONER LODGING – An element of a concessioner operation involving facilities for overnight lodging such as hotels, motels, cabins, cottages, trailer villages and trailer rental.

DEFINITIONS (continued)

MISCELLANEOUS OVERNIGHT STAY – Any overnight stay not otherwise defined (sleeping aboard boats, camping in organized groups, and/or any other overnight stays not included in other categories of overnight stays).

MIXED AREA PARK – See CATEGORY.

NATIONAL PARK SERVICE (NPS) – A department of Interior (DOI) agency which administers approximately two dozen types of federal land, nationally significant for their scenic, natural, scientific, historical or archeological interest (see CLASSIFICATION). The agency was established as a Bureau of the DOI by an Act of Congress, August 25, 1916. The NPS does not administer National Forests (United State Department of Agriculture/Forest Service), Wildlife Refuges (United States Department of Interior/Fish and Wildlife Service), or a variety of other lands available for public use.

NEGLECTIBLE TRANSIT – A brief, incidental entry into a park by a passing traffic (vehicular or pedestrian) using NPS administered grounds roads or walkways (See NON-REPORTABLE VISITS).

NON-RECREATION OVERNIGHT STAY – A reportable non-recreation overnight stay includes leaseholders, line shacks for ranchers, and government personnel (other than NPS employees).

NON-RECREATION VISIT – A reportable non-recreation visit includes through traffic, trades-people with business in the park, and government personnel (other than NPS employees) with business in the park.

NON-REPORTABLE VISIT – The entry into a park by NPS employees, their families, concessionaire employees, members of cooperating associations, NPS contractors and service personnel.

NON-REPORTING – These areas do not report recreation visits to the NPS.

OUTLYING AREA PARK – See CATEGORY.

OVERNIGHT STAY – One night within a park by a visitor.

RECREATION VEHICLE – Any enclosed vehicle used for camping which is more elaborate than a simple truck or car, such as pickup truck with camper body, pop-up tent trailer, travel trailer, bus, motor coach, mobile home, etc.

DEFINITIONS (continued)

RECREATION VISIT – The entry of a person onto lands or waters administered by the NPS for recreational purposes excluding government personnel, through traffic (commuters), trades-persons and persons residing within park boundaries.

REGION – An NPS administrative subdivision. The seven NPS regions include the following states:

- Alaska (AK) – Alaska
- Intermountain (IM) – Arizona, Colorado, Montana, New Mexico, Texas, Utah, Wyoming
- Midwest (MW) – Arkansas, Illinois, Indiana, Iowa, Kansas, Michigan, Minnesota, Missouri, Nebraska, North Dakota, Ohio, Oklahoma, South Dakota, Wisconsin
- National Capital (NC) – Washington, D.C., Maryland, Virginia, West Virginia
- Northeast (NE) – Connecticut, Delaware, Massachusetts, Maine, New Hampshire, New Jersey, New York, Pennsylvania, Rhode Island, Vermont, Virginia
- Pacific West (PW) – California, Guam, Hawaii, Idaho, Nevada, Oregon, Washington
- Southeast (SE) – Alabama, Florida, Georgia, Kentucky, Louisiana, Mississippi, North Carolina, Puerto Rico, South Carolina, Tennessee, Virgin Islands

REMOTE AREA PARK – See CATEGORY.

RURAL AREA PARK – See CATEGORY.

SERVICE PERSONNEL – Non-reportable visits include visits by employees of the NPS who are assigned to the park or are visiting the park in connection with their duty assignments, NPS contractors, concessionaires, cooperating associations, and the temporary or permanent members in the household of NPS employees resident in the park.

SUBURBAN AREA PARK – See CATEGORY.

URBAN AREA PARK – See CATEGORY.

DEFINITIONS (continued)

VISIT – The entry of any person except NPS and service personnel, onto lands or waters administered by the NPS. A visit may occur as a recreation visit or a non-recreation visit. A same day reentry, negligible transit, and an entry to a detached portion of the same park on the same day are considered to be a single visit. Such adjustments are made insofar as practicable no noncontiguous parts of the same park. However, visits are reported separately for two contiguous parks.

VISITOR DAY – Twelve visitor hours in a park.

VISITOR HOUR – The presence of one or more persons (excluding NPS personnel) in a park for continuous, intermittent or simultaneous periods of time aggregating one hour (e.g., one person for one hour, two persons for one-half hour).