

NATIONAL PARK SERVICE
STATISTICAL ABSTRACT
2001

National Park Service
Public Use Statistics Office

INTRODUCTION

National Park Service professionals are dedicated to their fundamental mission as protectors of our resources for future generations, archivists of the nation's history, and providers of educational and leisure time opportunities. Timely, reliable, and useful information is fundamental to effective management and planning.

The Public Use Statistics Office acknowledges the conscientious efforts of field staff of the many areas of the NPS. Without the effort of park staff to count, record, and report the public use summarized here, a statistical report of this quality would not be possible. A program of collecting and analyzing monthly public use is combined with continuous auditing of park counting procedures to ensure consistency and accuracy of data. The endnotes at the end of this report describe conditions at parks that may require important adjustments for certain applications of these data.

The National Park Service cares for special places saved by the American people so that all may experience our heritage. National parks help define who we are as a nation and where we have come as a people. Parks show us natural and historical wonders that grace our lives and provide us with cherished memories.

Comments or requests for additional public use information should be addressed to:

National Park Service
Public Use Statistics Office
WASO-TNT
12795 W. Alameda Parkway
P. O. Box 25287
Denver, Colorado
80225-0287

Telephone: (303) 987-6950
Facsimile: (303) 987-6960
Web Page: www2.nature.nps.gov/stats

STATISTICAL ABSTRACT 2001

Table of Contents

DATA TABLES

Table 1: 2001 Recreation Visits by Type of Area.....	1
Table 2: 2001 Recreation Visits by State.....	2
Table 3: 2001 Recreation Visits/Visitor Days by Region.....	3
Table 4: 2001 Recreation Visits/Visitor Days by Population Center.....	3
Table 5: 2001 Recreation & Non-Recreation Visits/Visitor Days by Park.....	4
Figure 1.....	13
Figure 2.....	14
Table 6: 2001 Overnight Stays by Park.....	15
Figure 3.....	19
Figure 4.....	20
Table 7: 2001 Affiliated and Non-Reporting Areas.....	21
Table 8: 2001 Recreation Visits/Visitor Days by State.....	22
Table 9: 2002 and 2003 Forecast of Recreation Visits	40
Table 10: 2001 Listing of Acreage.....	51
Table 11: 2001 Summary of Acreage.....	67
Endnotes.....	68
Definitions.....	70
Abbreviations.....	74

Table 1: 2001 Recreation Visits by Type of Area

AREAS ADMINISTERED BY TYPE	REC Visits	Areas Reporting Visits	Areas Administered
International Historic Site	0	0	1
National Battlefield	1,578,131	10	11
National Battlefield Park	2,260,199	3	3
National Battlefield Site	0	0	1
National Historic Site	10,109,574	70	77
National Historical Park	26,292,964	36	40
National Lakeshore	3,469,258	4	4
National Memorial	26,462,172	28	28
National Military Park	5,667,987	9	9
National Monument	21,842,404	67	74
National Park	64,083,237	56	57
National Parkway	34,366,307	4	4
National Preserve	1,740,382	15	17
National Recreation Area	48,333,109	17	18
National Reserve	68,165	1	2
National River	4,431,108	4	5
National Scenic Trail	0	0	3
National Seashore	18,706,770	10	10
National Wild & Scenic River	814,496	5	10
Parks (Other)	9,947,663	9	11
NPS TOTAL	279,873,926	348	385

Table 2: 2001 Recreation Visits by State

STATE	Visits 2000	Visits 2001	Percent Change	STATE	Visits 2000	Visits 2001	Percent Change
Alabama	608,394	555,147	-8.8%	Nebraska	181,229	182,611	0.8%
Alaska	2,025,934	2,055,152	2.5%	Nevada	6,647,299	6,430,872	-3.3%
Arizona	11,525,818	10,988,475	-4.7%	New Hampshire	37,030	37,550	1.4%
Arkansas	2,243,965	2,318,599	2.4%	New Jersey	5,541,529	5,631,953	1.6%
California	34,410,505	32,554,774	-5.4%	New Mexico	1,766,079	1,843,650	4.4%
Colorado	5,807,033	5,597,641	-3.6%	New York	18,532,586	16,621,375	-10.3%
Connecticut	15,910	17,643	10.9%	North Carolina	21,068,081	21,333,633	1.3%
Dist of Columbia	28,801,619	28,801,922	0.0%	North Dakota	484,242	502,440	3.8%
Florida	8,914,714	8,923,251	0.1%	Ohio	3,585,692	3,393,066	-5.4%
Georgia	6,022,686	6,087,065	1.1%	Oklahoma	1,808,354	2,091,766	15.7%
Guam	155,789	149,865	-3.8%	Oregon	831,394	869,174	4.5%
Hawaii	5,184,536	4,764,088	-8.1%	Pennsylvania	8,326,184	8,073,440	-3.0%
Idaho	437,473	425,692	-2.7%	Puerto Rico	1,086,104	1,281,528	18.0%
Illinois	367,968	392,214	6.6%	Rhode Island	56,240	51,816	-7.9%
Indiana	2,108,500	2,010,602	-4.6%	South Carolina	937,688	1,583,410	68.9%
Iowa	270,378	263,486	-2.5%	South Dakota	3,772,167	3,635,275	-3.6%
Kansas	116,220	128,654	10.7%	Tennessee	8,348,808	7,815,318	-6.4%
Kentucky	3,851,514	3,367,362	-12.6%	Texas	5,878,012	5,401,275	-8.1%
Louisiana	895,470	969,370	8.3%	Utah	8,843,646	8,343,133	-5.7%
Maine	2,469,238	2,516,551	1.9%	Vermont	46,289	26,350	-43.1%
Maryland	3,179,601	3,394,440	6.8%	Virgin Islands	802,939	790,316	-1.6%
Massachusetts	10,250,764	9,845,682	-4.0%	Virginia	24,028,901	24,605,608	2.4%
Michigan	1,638,863	1,567,850	-4.3%	Washington	7,275,528	7,217,400	-0.8%
Minnesota	597,544	542,266	-9.3%	West Virginia	1,942,282	2,099,083	8.1%
Mississippi	7,006,366	6,859,139	-2.1%	Wisconsin	366,628	314,387	-14.2%
Missouri	5,338,809	5,353,407	0.3%	Wyoming	5,754,332	5,617,976	-2.4%
Montana	3,696,401	3,629,186	-1.8%				
NPS TOTAL						279,873,926	-2.1%

Table 3: 2001 Recreation Visits/Visitor Days by Region				
REGION	REC Visits	Percent Change	Visitor Days	Percent Change
Alaska	2,055,152	1.4%	1,438,446	-1.2%
Intermountain	41,340,097	-3.5%	28,315,203	-3.6%
Midwest	20,604,856	-2.2%	5,639,928	-2.9%
National Capital	41,333,624	0.8%	3,960,903	4.0%
Northeast	52,801,345	-3.9%	12,287,756	-2.0%
Pacific West	54,584,871	-4.5%	26,595,224	-2.1%
Southeast	67,153,981	0.5%	25,697,159	-0.2%
NPS TOTAL	279,873,926	-2.1%	103,934,619	-1.9%

Table 4: 2001 Recreation Visits / Visitor Days by Population Center				
POPULATION CENTER	REC Visits	Percent Change	Visitor Days	Percent Change
Mixed Area	29,695,986	6.0%	12,907,706	4.3%
Outling Area	50,353,872	-1.3%	22,784,107	-3.1%
Remote Area	3,863,068	2.5%	1,669,418	0.4%
Rural Area	85,611,074	-2.4%	51,428,616	-2.3%
Suburban Area	23,646,098	0.1%	4,442,201	0.1%
Urban Area	86,703,828	-5.5%	10,702,572	-5.0%
NPS TOTAL	279,873,926	-2.1%	103,934,619	-1.9%

**Table 5: 2001 Recreation & Non-Recreation Visits / Visitor Days
by Park**

PARKS	VISITS				DAYS			
	PARK NAME	REC	Percent Change	NON-REC	Percent Change	REC	Percent Change	NON-REC
Abraham Lincoln Birthplace NHS	229,675	-2.8%	0	0.0%	19,140	-2.8%	0	0.0%
Acadia NP	2,516,551	1.9%	252,576	0.0%	1,122,312	1.8%	21,048	0.0%
Adams NHP	167,500	91.8%	2,255	59.8%	12,589	94.5%	94	59.4%
Agate Fossil Beds NM	17,399	-3.0%	0	0.0%	3,519	-3.0%	0	0.0%
Alibates Flint Quarries NM	2,456	-21.6%	0	0.0%	512	-21.5%	0	0.0%
Allegheny Portage Railroad NHS ⁵	142,340	6.7%	180	0.0%	13,144	10.9%	4	0.0%
Amistad NRA	1,097,650	-11.1%	1,128	0.0%	691,101	-11.1%	94	0.0%
Andersonville NHS	160,974	-3.8%	0	0.0%	26,829	-3.8%	0	0.0%
Andrew Johnson NHS	49,551	-17.3%	0	0.0%	2,374	-15.5%	0	0.0%
Aniakchak NM	206	-17.9%	77	0.0%	691	0.0%	183	0.0%
Antietam NB	303,599	5.8%	0	0.0%	49,100	-10.6%	0	0.0%
Apostle Islands NL	185,435	2.0%	1,054	0.0%	73,916	-6.5%	22	0.0%
Appomattox Court House NHP	190,422	-3.0%	0	0.0%	13,144	-3.0%	0	0.0%
Arches NP	754,026	-4.1%	0	0.0%	282,334	-2.0%	0	0.0%
Arkansas Post NMEM	43,502	-0.9%	0	0.0%	5,438	-0.9%	0	0.0%
Arlington House	429,470	13.9%	0	0.0%	17,895	13.9%	0	0.0%
Assateague Island NS	1,897,634	4.8%	3,600	0.0%	1,403,132	5.3%	300	0.0%
Aztec Ruins NM	46,451	-10.9%	603	-16.1%	5,807	-10.9%	95	-5.0%
Badlands NP	955,469	-13.6%	18,864	0.0%	358,094	-13.4%	786	0.0%
Bandelier NM	313,850	26.4%	840	0.0%	100,223	26.7%	11	0.0%
Bent's Old Fort NHS	30,987	1.7%	0	0.0%	4,519	1.7%	0	0.0%
Bering Land Bridge NPRES	3,525	16.5%	4,230	5.8%	881	16.5%	2,820	5.8%
Big Bend NP	328,927	25.4%	2,364	0.0%	705,077	11.2%	591	0.0%
Big Cypress NPRES	409,771	-18.9%	0	0.0%	165,727	13.0%	0	0.0%
Big Hole NB	56,619	39.9%	0	0.0%	7,696	66.4%	0	0.0%
Big South Fork NRRRA	916,548	6.1%	0	0.0%	541,924	5.5%	0	0.0%
Big Thicket NPRES ⁴	98,526	58.9%	0	0.0%	31,973	73.5%	0	0.0%
Bighorn Canyon NRA	241,388	1.4%	6,900	0.0%	78,155	0.4%	288	0.0%
Biscayne NP	489,343	24.5%	0	0.0%	122,336	24.5%	0	0.0%
Black Canyon of the Gunnison NP	181,018	-5.5%	0	0.0%	81,402	-2.4%	0	0.0%
Blue Ridge Parkway	19,969,587	4.3%	1,942,260	0.0%	10,338,184	4.2%	80,928	0.0%
Bluestone NSR	55,763	7.8%	0	0.0%	11,618	7.8%	0	0.0%
Booker T. Washington NM	22,692	5.9%	84	0.0%	3,531	-6.0%	1	0.0%
Boston African American NHS	390,130	-0.8%	0	0.0%	11,254	4.8%	0	0.0%
Boston NHP ⁶	1,981,301	-19.2%	65,160	0.0%	140,992	-41.7%	923	0.0%
Bryce Canyon NP	1,068,619	-2.8%	501,260	-7.4%	687,924	-4.7%	12,532	-7.4%
Buffalo NR	794,676	8.6%	0	0.0%	517,479	4.7%	0	0.0%
Cabrillo NM	1,034,753	-8.9%	81,794	0.0%	126,055	-8.7%	1,704	0.0%
Canaveral NS	1,062,962	-4.7%	0	0.0%	227,554	-3.7%	0	0.0%
Canyon de Chelly NM	833,202	-1.8%	1,199,538	-1.4%	485,848	-5.0%	199,923	-1.4%

**Table 5: 2001 Recreation & Non-Recreation Visits / Visitor Days
by Park(cont.)**

PARKS	VISITS				DAYS			
PARK NAME	REC	Percent Change	NON-REC	Percent Change	REC	Percent Change	NON-REC	Percent Change
Canyonlands NP	368,592	-8.2%	0	0.0%	330,973	-5.9%	0	0.0%
Cape Cod NS	4,391,478	-4.1%	29,548	0.0%	720,946	-4.1%	14,774	0.0%
Cape Hatteras NS	2,592,889	-2.1%	136,193	-0.4%	1,001,484	-1.6%	38,398	-1.0%
Cape Krusenstern NM	4,060	100.4%	7,240	10.5%	868	128.2%	4,827	10.5%
Cape Lookout NS	625,387	40.2%	4,800	0.0%	163,388	-3.5%	1,200	0.0%
Capitol Reef NP	527,760	-13.9%	73,176	4.0%	82,247	-13.3%	6,098	4.0%
Capulin Volcano NM	60,542	-2.8%	315	-24.1%	7,125	-2.2%	26	-24.1%
Carl Sandburg Home NHS	34,769	-1.3%	0	0.0%	3,727	-2.1%	0	0.0%
Carlsbad Caverns NP	455,621	-2.9%	0	0.0%	149,070	-2.9%	0	0.0%
Casa Grande Ruins NM	132,630	6.8%	2,160	0.0%	9,395	6.8%	18	0.0%
Castillo de San Marcos NM	613,465	-5.4%	0	0.0%	38,342	-5.4%	0	0.0%
Castle Clinton NM ⁶	3,601,635	-21.5%	6,899	-6.1%	151,711	-21.4%	992	-9.7%
Catoctin Mountain Park	532,615	4.7%	211,961	-0.4%	176,747	0.9%	2,022	-0.3%
Cedar Breaks NM	690,652	25.4%	59,559	14.3%	119,462	23.7%	9,927	14.3%
Chaco Culture NHP	68,527	-15.4%	5,322	-11.4%	64,558	9.9%	444	-11.4%
Chamizal NMEM	216,320	17.9%	11,848	-1.3%	27,193	15.2%	3,456	-1.3%
Channel Islands NP	520,428	7.8%	18,206	-9.9%	443,174	24.5%	36,412	-9.9%
Charles Pinckney NHS	29,272	21.7%	0	0.0%	4,879	21.7%	0	0.0%
Chattahoochee River NRA	2,751,256	3.4%	0	0.0%	917,085	3.4%	0	0.0%
Chesapeake & Ohio Canal NHP	4,174,048	34.0%	11,880	0.0%	695,675	34.0%	990	0.0%
Chickamauga & Chattanooga NMP ⁵	749,913	-10.5%	6,174,721	-16.4%	118,546	-11.2%	77,184	-16.4%
Chickasaw NRA	1,608,792	15.8%	1,536,787	-4.6%	510,734	14.4%	10,245	-4.6%
Chiricahua NM	75,824	-11.4%	2,496	-25.1%	30,384	-10.7%	69	-25.0%
Christiansted NHS	112,915	14.1%	0	0.0%	5,041	16.2%	0	0.0%
City of Rocks NRES	68,165	2.9%	0	0.0%	19,882	2.9%	0	0.0%
Clara Barton NHS	17,382	26.3%	0	0.0%	1,449	26.3%	0	0.0%
Colonial NHP	3,282,461	4.1%	2,019,325	-3.7%	301,755	3.5%	84,139	-3.7%
Colorado NM	237,604	-11.8%	314,061	3.6%	62,635	-10.6%	13,086	3.6%
Congaree Swamp NM	119,738	25.2%	0	0.0%	32,091	20.4%	0	0.0%
Coronado NMEM	89,107	5.0%	2,508	0.0%	10,564	11.7%	105	0.0%
Cowpens NB	218,361	2.6%	0	0.0%	11,140	5.5%	0	0.0%
Crater Lake NP	457,373	7.1%	49,600	0.0%	252,509	7.5%	2,067	0.0%
Craters of the Moon NM	185,799	-12.2%	0	0.0%	44,983	-10.5%	0	0.0%
Cumberland Gap NHP ⁴	887,488	-41.6%	7,226,966	10.4%	145,575	-32.4%	301,124	10.4%
Cumberland Island NS	45,193	3.2%	0	0.0%	67,639	6.2%	0	0.0%
Curecanti NRA	879,776	-13.9%	0	0.0%	332,442	-17.6%	0	0.0%
Cuyahoga Valley NP	3,123,353	-6.1%	1,296	-73.0%	789,881	-8.1%	54	-73.0%
Dayton Aviation Heritage NHP	48,489	34.5%	495	-22.0%	8,082	34.5%	41	-22.0%
De Soto NMEM	221,282	-12.7%	0	0.0%	30,426	-12.7%	0	0.0%

**Table 5: 2001 Recreation & Non-Recreation Visits / Visitor Days
by Park (cont.)**

PARKS	VISITS				DAYS			
	REC	Percent Change	NON-REC	Percent Change	REC	Percent Change	NON-REC	Percent Change
Death Valley NP	1,014,636	-13.9%	38,382	-12.5%	633,475	-10.7%	4,798	-12.5%
Delaware Water Gap NRA	4,867,273	-0.7%	186,083	3.6%	1,828,039	-0.6%	7,754	3.6%
Denali NP	360,191	-1.0%	791,764	-3.3%	457,568	-2.7%	16,495	-3.3%
Devils Postpile NM	155,478	5.1%	0	0.0%	52,105	1.1%	0	0.0%
Devils Tower NM	375,596	-2.1%	450	-69.1%	90,714	2.1%	19	-69.2%
Dinosaur NM	326,373	-17.8%	732	0.0%	162,566	-14.2%	61	0.0%
Dry Tortugas NP	79,186	-5.4%	9,488	-17.9%	82,358	-1.5%	9,488	-17.9%
Edgar Allan Poe NHS	12,552	1892.4%	0	0.0%	1,046	1892.4%	0	0.0%
Edison NHS ⁶	54,419	323.1%	0	0.0%	5,989	315.7%	0	0.0%
Effigy Mounds NM	79,846	2.9%	1,200	0.0%	16,635	2.9%	17	0.0%
Eisenhower NHS	74,826	-2.7%	0	0.0%	9,977	-2.7%	0	0.0%
El Malpais NM ⁵	118,374	54.6%	720	0.0%	40,630	50.4%	15	0.0%
El Morro NM	68,886	1.7%	14,332	3.6%	15,764	12.3%	394	3.5%
Eleanor Roosevelt NHS	86,012	11.8%	0	0.0%	10,752	11.8%	0	0.0%
Eugene O'Neill NHS	3,510	-1.9%	260	78.1%	1,240	3.2%	43	78.1%
Everglades NP	1,049,851	5.5%	58,539	-10.3%	520,734	5.0%	21,952	-10.3%
Federal Hall NMEM ⁶	203,816	-15.7%	1,533	-46.2%	10,530	-12.9%	248	-9.2%
Fire Island NS	661,692	10.2%	180,075	-4.0%	201,798	5.0%	45,019	-4.0%
Florissant Fossil Beds NM	79,669	-3.0%	0	0.0%	8,252	-3.2%	0	0.0%
Ford's Theatre NHS	1,224,540	5.2%	517	23.1%	98,220	0.0%	86	23.1%
Fort Bowie NHS	8,858	-0.4%	0	0.0%	1,476	-0.4%	0	0.0%
Fort Caroline NMEM	195,303	2.8%	0	0.0%	16,275	2.8%	0	0.0%
Fort Clatsop NMEM	226,137	5.3%	332	23.4%	30,801	5.0%	7	20.0%
Fort Davis NHS	56,946	3.6%	808	-52.8%	6,865	-0.1%	96	-73.6%
Fort Donelson NB	226,390	3.4%	498,414	-8.0%	12,957	5.9%	1,371	-8.0%
Fort Frederica NM	290,705	19.1%	1,800	0.0%	24,450	19.1%	37	0.0%
Fort Laramie NHS	44,376	-6.2%	365	0.0%	5,329	-4.3%	46	0.0%
Fort Larned NHS	35,581	-11.0%	0	0.0%	5,930	-11.0%	0	0.0%
Fort Matanzas NM	682,480	7.2%	0	0.0%	57,626	7.0%	0	0.0%
Fort McHenry NM & HS ⁷	646,775	-6.4%	720	0.0%	80,847	-6.4%	30	0.0%
Fort Necessity NB	89,133	-5.0%	120	0.0%	11,150	12.2%	4	0.0%
Fort Point NHS	1,203,023	-25.2%	0	0.0%	55,419	-28.9%	0	0.0%
Fort Pulaski NM	357,953	0.9%	28,800	0.0%	75,078	1.0%	600	0.0%
Fort Raleigh NHS	267,464	9.3%	1,344	0.0%	37,406	5.0%	112	0.0%
Fort Scott NHS	40,673	11.5%	858	2.3%	5,085	11.5%	24	2.5%
Fort Smith NHS	84,974	58.5%	0	0.0%	9,418	58.5%	0	0.0%
Fort Stanwix NM	53,065	37.2%	0	0.0%	6,633	37.2%	0	0.0%
Fort Sumter NM ⁵	919,443	188.1%	0	0.0%	184,909	209.6%	0	0.0%
Fort Union NM	15,100	5.9%	487	-15.2%	1,485	5.9%	3	-15.9%

**Table 5: 2001 Recreation & Non-Recreation Visits / Visitor Days
by Park (cont.)**

PARKS	VISITS				DAYS			
	REC	Percent Change	NON-REC	Percent Change	REC	Percent Change	NON-REC	Percent Change
Fort Union Trading Post NHS	19,551	0.9%	741	28.0%	2,064	4.7%	15	26.0%
Fort Vancouver NHS	404,662	7.4%	0	0.0%	43,396	4.3%	0	0.0%
Fort Washington Park	267,032	3.2%	0	0.0%	86,412	2.4%	0	0.0%
Fossil Butte NM	19,902	-9.2%	445	-4.3%	2,708	-4.2%	22	26.3%
Franklin Delano Roosevelt Memorial	2,866,417	-1.8%	0	0.0%	119,434	-1.9%	0	0.0%
Frederick Douglass NHS	29,618	-8.7%	0	0.0%	2,468	-1.7%	0	0.0%
Frederick Law Olmsted NHS	10,332	59.0%	172	21.1%	1,722	59.0%	48	32.9%
Fredericksburg & Spotsylvania NMP	465,323	-5.0%	1,074,902	-6.6%	53,462	-5.5%	15,803	-8.0%
Friendship Hill NHS	33,791	13.0%	0	0.0%	6,306	12.0%	0	0.0%
Gates of the Arctic NP	4,505	-60.1%	471	-56.5%	2,906	518.2%	2,046	-48.1%
Gateway NRA	8,285,059	4.5%	1,039,491	-12.8%	2,080,006	0.7%	173,249	-12.8%
Gauley River NRA	236,192	-6.8%	0	0.0%	89,072	3.5%	0	0.0%
General Grant NMEM ⁶	85,107	-23.5%	2,683	-6.6%	5,013	-18.4%	323	-21.1%
George Rogers Clark NHP	129,161	-3.8%	0	0.0%	14,423	-3.8%	0	0.0%
George Washington Birthplace NM	141,907	0.3%	3,650	0.0%	23,651	0.3%	304	0.0%
George Washington Carver NM	41,464	-21.0%	0	0.0%	4,492	-21.0%	0	0.0%
George Washington Memorial Pkwy	7,664,091	-3.0%	28,411,386	9.4%	647,102	-2.1%	1,183,808	9.4%
Gettysburg NMP	1,792,380	16.2%	74,400	0.0%	443,599	12.2%	1,029	0.0%
Gila Cliff Dwellings NM	49,447	7.0%	0	0.0%	4,121	7.0%	0	0.0%
Glacier Bay NP	380,114	-1.2%	2,574	174.4%	426,195	-2.6%	12,798	-4.9%
Glacier NP	1,680,614	-2.8%	7,520	-20.2%	1,171,906	-2.9%	5,571	-19.6%
Glen Canyon NRA	2,340,031	-8.9%	23,776	-8.4%	4,560,170	-3.7%	23,776	-8.4%
Golden Gate NRA	13,457,900	-7.1%	0	0.0%	1,830,271	-3.8%	0	0.0%
Golden Spike NHS	43,887	-3.1%	31,000	0.0%	9,099	-1.6%	1,292	0.0%
Grand Canyon NP ⁴	4,104,809	-8.0%	334,987	-6.0%	5,093,145	-10.4%	27,916	-6.0%
Grand Portage NM	81,428	-12.4%	0	0.0%	4,369	-12.0%	0	0.0%
Grand Teton NP	2,535,108	-2.1%	1,502,781	11.2%	1,490,586	-1.4%	125,232	11.2%
Grant-Kohrs Ranch NHS	20,188	-3.2%	0	0.0%	2,069	-3.2%	0	0.0%
Great Basin NP ⁵	81,712	0.8%	0	0.0%	113,504	4.1%	0	0.0%
Great Sand Dunes NP	277,523	6.4%	470	0.0%	145,528	19.3%	39	0.0%
Great Smoky Mountains NP	9,197,697	-9.6%	11,158,947	2.1%	5,706,108	-9.6%	464,957	2.1%
Greenbelt Park	192,154	13.4%	0	0.0%	65,757	-8.6%	0	0.0%
Guadalupe Mountains NP	222,307	11.8%	0	0.0%	45,288	5.9%	0	0.0%
Guilford Courthouse NMP	858,125	4.3%	4,168,093	-2.8%	37,713	5.3%	2,883	-2.7%
Gulf Islands NS	4,549,900	-0.9%	124,095	2.1%	1,118,244	-1.7%	11,161	53.0%
Hagerman Fossil Beds NM	12,311	-9.5%	0	0.0%	1,539	-9.5%	0	0.0%
Haleakala NP	1,410,974	-12.9%	29,088	0.0%	282,364	-11.1%	1,680	0.0%
Hamilton Grange NMEM ⁶	22,971	-44.4%	276	7.4%	1,454	-47.4%	46	7.4%
Hampton NHS	24,096	3.0%	600	0.0%	2,049	2.7%	50	0.0%
Harpers Ferry NHP	325,156	2.3%	0	0.0%	108,385	2.3%	0	0.0%
Harry S Truman NHS	45,112	2.1%	0	0.0%	3,105	-2.9%	0	0.0%

**Table 5: 2001 Recreation & Non-Recreation Visits / Visitor Days
by Park (cont.)**

PARKS	VISITS				DAYS			
	PARK NAME	REC	Percent Change	NON-REC	Percent Change	REC	Percent Change	NON-REC
Hawaii Volcanoes NP	1,343,286	-11.3%	1,288,363	11.1%	740,873	-7.2%	35,430	11.1%
Herbert Hoover NHS	183,640	-4.8%	18,000	0.0%	15,303	-4.8%	100	0.0%
Home of Franklin D. Roosevelt NHS	127,624	-2.1%	0	0.0%	19,419	-1.7%	0	0.0%
Homestead National Monument of America	52,077	18.6%	0	0.0%	7,379	18.8%	0	0.0%
Hopewell Culture NHP	26,761	-6.5%	0	0.0%	2,925	1.6%	0	0.0%
Hopewell Furnace NHS	64,898	-6.2%	600	0.0%	6,490	-6.2%	25	0.0%
Horseshoe Bend NMP	108,190	-13.7%	873,084	1.0%	21,463	-13.6%	24,250	1.0%
Hot Springs NP	1,296,786	-3.1%	1,934,979	-5.4%	74,144	4.2%	32,250	-5.4%
Hovenweep NM	37,396	-13.6%	300	0.0%	8,933	-10.6%	5	0.0%
Hubbell Trading Post NHS	234,631	8.4%	4,584	0.0%	10,102	8.4%	88	0.0%
Independence NHP ⁶	2,813,047	-11.5%	0	0.0%	353,300	-11.1%	0	0.0%
Indiana Dunes NL	1,735,404	-4.7%	104,904	0.0%	405,835	-4.2%	4,371	0.0%
Isle Royale NP	19,431	-7.9%	133	-8.9%	135,027	10.6%	958	-41.0%
James A. Garfield NHS	21,115	-10.6%	0	0.0%	3,519	-10.6%	0	0.0%
Jean Lafitte NHP and PRES	923,604	5.1%	469,666	14.4%	139,962	9.0%	9,630	14.7%
Jefferson National Expansion Memorial	3,532,524	2.1%	445,868	-18.3%	1,177,508	2.1%	6,317	-18.3%
Jewel Cave NM	125,330	-2.8%	348	-28.2%	11,444	-3.6%	29	-28.2%
Jimmy Carter NHS	59,716	14.6%	0	0.0%	2,488	14.6%	0	0.0%
John D. Rockefeller Jr., Mem Pkwy	1,180,278	-2.5%	10,800	0.0%	201,979	2.5%	225	0.0%
John Day Fossil Beds NM	98,489	-2.0%	840	0.0%	9,821	-2.0%	7	0.0%
John Fitzgerald Kennedy NHS	12,244	-0.1%	0	0.0%	510	-0.1%	0	0.0%
John Muir NHS	25,257	-22.4%	1,716	-4.6%	3,442	-22.8%	36	-4.9%
Johnstown Flood NMEM	119,462	-2.3%	95,851	-4.3%	10,467	2.2%	240	-4.3%
Joshua Tree NP	1,280,917	3.8%	4,782	10.6%	762,769	2.0%	399	10.6%
Kalaupapa NHP	63,006	-27.6%	0	0.0%	42,004	-27.6%	0	0.0%
Kaloko-Honokohau NHP ⁴	54,000	22.3%	0	0.0%	11,688	23.5%	0	0.0%
Katmai NP	67,038	-6.1%	338	1.5%	69,304	-4.5%	971	2.5%
Kenai Fjords NP	262,353	3.0%	0	0.0%	71,822	2.9%	0	0.0%
Kennesaw Mountain NBP	1,329,271	-0.9%	10,151,091	0.1%	179,462	-1.4%	135,348	0.1%
Kings Canyon NP	541,787	2.4%	33,345	7.2%	1,444,793	1.9%	11,115	7.2%
Kings Mountain NMP	267,402	3.8%	262,220	4.0%	26,552	24.0%	3,641	4.0%
Klondike Gold Rush NHP Alaska ³	713,436	2.4%	0	0.0%	249,644	0.7%	0	0.0%
Klondike Gold Rush NHP Seattle ^{3, 4}	76,030	-39.0%	0	0.0%	4,752	-39.0%	0	0.0%
Knife River Indian Villages NHS	36,280	9.8%	681	55.1%	5,139	14.0%	29	54.5%
Kobuk Valley NP	4,217	59.4%	6,970	23.4%	1,120	61.6%	4,647	23.4%
Korean War Veterans Memorial	2,961,477	1.3%	0	0.0%	123,478	-0.4%	0	0.0%
Lake Chelan NRA	42,548	-17.9%	0	0.0%	44,004	-18.9%	0	0.0%
Lake Clark NP	4,397	-32.3%	0	0.0%	5,019	5.3%	0	0.0%
Lake Mead NRA	8,465,547	-3.3%	307,042	-3.3%	5,837,357	-5.4%	153,521	-3.3%
Lake Meredith NRA	1,248,278	-22.7%	0	0.0%	320,264	-22.2%	0	0.0%
Lake Roosevelt NRA ⁴	1,252,160	-11.5%	1,200	-93.3%	391,978	-17.9%	50	-93.3%

**Table 5: 2001 Recreation & Non-Recreation Visits / Visitor Days
by Park (cont.)**

PARKS	VISITS				DAYS			
	PARK NAME	REC	Percent Change	NON-REC	Percent Change	REC	Percent Change	NON-REC
Lassen Volcanic NP	376,695	0.5%	0	0.0%	354,407	8.7%	0	0.0%
Lava Beds NM	113,882	-0.4%	771	0.0%	27,446	-6.9%	33	0.0%
Lincoln Boyhood NMEM	146,037	-5.2%	16,200	0.0%	13,691	-5.2%	225	0.0%
Lincoln Home NHS	392,214	6.6%	10,516	-2.1%	28,960	6.6%	5,618	-0.1%
Lincoln Memorial	3,968,357	-1.0%	0	0.0%	165,348	-1.0%	0	0.0%
Little Bighorn Battlefield NM	334,567	1.3%	2,978	0.9%	27,904	1.3%	124	1.0%
Little Rock Central High School NHS ²	21,078	0.0%	0	0.0%	1,757	0.0%	0	0.0%
Longfellow NHS ⁶	0	0.0%	0	0.0%	0	0.0%	0	0.0%
Lowell NHP	723,568	19.6%	19,404	60.3%	90,155	22.4%	2,426	60.2%
LBJ Mem Grove On Potomac	529,503	8.5%	0	0.0%	22,063	8.5%	0	0.0%
Lyndon B. Johnson NHP	101,824	-6.3%	11,160	0.0%	24,807	-7.6%	3,720	0.0%
Maggie L. Walker NHS	10,147	6.7%	0	0.0%	423	6.6%	0	0.0%
Mammoth Cave NP	1,883,580	7.7%	92,253	0.0%	398,033	4.6%	7,212	0.0%
Manassas NBP	822,684	18.9%	480	0.0%	51,418	18.9%	7	0.0%
Manzanar NHS	46,834	23.2%	0	0.0%	3,903	23.2%	0	0.0%
Marsh-Billings-Rockefeller NHP	26,350	-43.1%	0	0.0%	4,392	-43.1%	0	0.0%
Martin Luther King, Jr., NHS	598,475	-2.2%	0	0.0%	96,899	-5.6%	0	0.0%
Martin Van Buren NHS	15,950	13.4%	720	0.0%	1,356	7.6%	15	0.0%
Mary Mcleod Bethune Council House NHS	5,769	1.3%	0	0.0%	962	1.3%	0	0.0%
Mesa Verde NP	513,409	13.5%	24,065	28.0%	342,032	16.7%	2,005	28.0%
Minute Man NHP	1,072,979	6.8%	0	0.0%	134,123	6.8%	0	0.0%
Mojave NPRES	492,745	10.9%	0	0.0%	250,513	10.5%	0	0.0%
Monocacy NB	18,095	-0.6%	0	0.0%	2,262	-0.6%	0	0.0%
Montezuma Castle NM	710,595	-10.0%	420	0.0%	59,216	-10.0%	9	0.0%
Moores Creek NB	88,320	-1.7%	0	0.0%	4,932	3.7%	0	0.0%
Morristown NHP	464,758	0.2%	0	0.0%	111,448	5.0%	0	0.0%
Mount Rainier NP	1,301,103	-3.3%	639,001	2.1%	1,230,389	-3.0%	53,250	2.1%
Mount Rushmore NMEM	1,904,119	1.9%	666,159	2.0%	208,923	1.9%	18,504	2.0%
Muir Woods NM	773,624	-12.5%	0	0.0%	85,937	-12.5%	0	0.0%
Natchez NHP	287,499	-14.1%	0	0.0%	44,536	-13.9%	0	0.0%
Natchez Trace Parkway	5,552,351	-3.2%	7,460,177	-12.3%	1,873,848	-3.2%	621,681	-12.3%
National Capital Parks Central ³	1,860,851	-33.9%	0	0.0%	173,925	-35.4%	0	0.0%
National Capital Parks East ³	1,343,067	6.3%	22,044,331	1.6%	161,420	8.9%	1,137,530	2.4%
Natural Bridges NM	97,171	-13.7%	800	0.0%	47,229	-11.0%	33	0.0%
Navajo NM	57,904	-12.4%	33,082	-7.4%	12,430	-11.2%	689	-7.4%
New Bedford Whaling NHP	303,342	11.3%	0	0.0%	12,639	11.1%	0	0.0%
New Orleans Jazz NHP	45,766	173.9%	0	0.0%	7,788	261.2%	0	0.0%
New River Gorge NR ⁷	1,231,529	8.7%	2,400	0.0%	240,595	-0.2%	400	0.0%
Nez Perce NHP	159,417	9.2%	1,800	0.0%	12,655	23.8%	15	0.0%
Nicodemus NHS	34,251	57.9%	0	0.0%	2,854	57.9%	0	0.0%
Ninety Six NHS	29,194	2.5%	0	0.0%	3,041	2.5%	0	0.0%

**Table 5: 2001 Recreation & Non-Recreation Visits / Visitor Days
by Park (cont.)**

PARKS	VISITS				DAYS			
	PARK NAME	REC	Percent Change	NON-REC	Percent Change	REC	Percent Change	NON-REC
Noatak NPRES	3,912	73.3%	3,745	62.8%	3,789	83.6%	2,497	62.8%
North Cascades NP	27,739	7.9%	0	0.0%	31,862	-6.1%	0	0.0%
Obed WSR	193,105	-19.6%	10,800	0.0%	70,924	-18.4%	75	0.0%
Ocmulgee NM	118,565	-7.2%	0	0.0%	14,821	-7.2%	0	0.0%
Oklahoma City NMEM	482,974	15.3%	0	0.0%	40,248	15.3%	0	0.0%
Olympic NP	3,416,069	2.7%	870,211	2.1%	1,463,962	-2.9%	27,149	0.4%
Oregon Caves NM	87,175	-2.3%	520	0.0%	26,076	-8.5%	87	0.0%
Organ Pipe Cactus NM	329,028	27.4%	1,152,487	3.1%	91,942	13.2%	48,020	3.1%
Ozark NSR	1,488,355	-5.1%	0	0.0%	335,465	-10.0%	0	0.0%
Padre Island NS	656,873	-13.5%	1,800	0.0%	363,408	-11.8%	1,200	0.0%
Pea Ridge NMP	77,583	1.4%	0	0.0%	12,931	1.4%	0	0.0%
Pecos NHP	32,718	-11.9%	0	0.0%	4,171	-9.2%	0	0.0%
Pennsylvania Avenue NHS ⁶	225,962	-18.9%	0	0.0%	6,214	-18.9%	0	0.0%
Perry's Victory and Internatl Peace Mem	164,402	0.1%	0	0.0%	17,127	11.6%	0	0.0%
Petersburg NB	161,999	-5.3%	378,984	2.4%	12,903	-5.7%	7,896	2.4%
Petrified Forest NP	583,904	-3.5%	120	0.0%	116,673	-2.5%	1,084	7.9%
Petroglyph NM	60,608	-0.9%	0	0.0%	5,182	-0.2%	0	0.0%
Pictured Rocks NL	421,312	-0.3%	1,850	0.0%	186,112	-0.4%	46	0.0%
Pinnacles NM	178,243	10.0%	0	0.0%	53,860	9.4%	0	0.0%
Pipe Spring NM	50,783	-2.3%	1,800	0.0%	4,232	-2.3%	75	0.0%
Pipestone NM	88,512	-4.2%	0	0.0%	18,441	-4.2%	0	0.0%
Piscataway Park	251,261	24.9%	0	0.0%	39,258	23.9%	0	0.0%
Point Reyes NS	2,222,762	-4.4%	25,788	0.0%	955,750	-1.2%	2,149	0.0%
President's Park ^{3, 6}	1,401,108	14.9%	0	0.0%	181,104	34.3%	0	0.0%
Prince William Forest Park	217,721	24.0%	480	0.0%	197,271	8.8%	80	0.0%
Pu'uuhonua O Honaunau NHP	402,071	-4.2%	0	0.0%	33,506	-4.2%	0	0.0%
Puukohola Heiau NHS	54,745	0.9%	126,180	-5.8%	2,281	0.9%	1,752	-5.8%
Rainbow Bridge NM	189,750	-4.0%	0	0.0%	23,719	-4.0%	0	0.0%
Redwood NP ⁶	388,352	1.3%	0	0.0%	173,907	-17.3%	0	0.0%
Richmond NBP	108,244	19.7%	145,791	-2.1%	28,248	47.3%	3,037	-2.1%
Rio Grande WSR	1,086	19.5%	0	0.0%	9,673	40.5%	0	0.0%
Rock Creek Park	2,185,813	7.2%	12,352,420	-0.5%	259,735	9.6%	514,684	-0.5%
Rocky Mountain NP	3,139,685	-1.4%	178,624	-8.2%	1,849,991	-2.7%	3,320	-3.1%
Roger Williams NMEM	51,816	-7.9%	72,735	-7.8%	3,672	-7.9%	485	-7.8%
Ross Lake NRA	331,343	21.1%	720	0.0%	130,596	-5.4%	60	0.0%
Russell Cave NM	20,449	-12.9%	0	0.0%	3,193	-13.7%	0	0.0%
Sagamore Hill NHS	45,176	-15.1%	0	0.0%	9,412	-15.1%	0	0.0%
Saguaro NP	725,874	-5.1%	2,599,632	-1.3%	99,761	1.6%	54,159	-1.3%
Saint Croix NSR ⁷	257,903	-30.2%	0	0.0%	227,214	10.2%	0	0.0%

**Table 5: 2001 Recreation & Non-Recreation Visits / Visitor Days
by Park (cont.)**

PARKS	VISITS				DAYS			
	PARK NAME	REC	Percent Change	NON-REC	Percent Change	REC	Percent Change	NON-REC
Saint Paul's Church NHS	11,756	20.3%	407	6.5%	1,517	16.0%	16	-1.0%
Saint-Gaudens NHS	37,550	1.4%	0	0.0%	6,347	7.0%	0	0.0%
Salem Maritime NHS	748,747	-6.0%	2	0.0%	77,560	81.6%	0	0.0%
Salinas Pueblo Missions NM	34,568	-0.8%	0	0.0%	6,004	-0.4%	0	0.0%
San Antonio Missions NHP	1,370,082	-1.7%	0	0.0%	180,973	-2.3%	0	0.0%
San Francisco Maritime NHP	3,256,974	-5.1%	0	0.0%	292,883	-7.5%	0	0.0%
San Juan Island NHP	301,067	12.5%	0	0.0%	21,162	5.7%	0	0.0%
San Juan NHS ⁴	1,281,528	18.0%	0	0.0%	212,071	20.1%	0	0.0%
Santa Monica Mountains NRA	532,898	13.5%	44,880	0.0%	99,326	22.6%	29,920	0.0%
Saratoga NHP	154,897	-5.5%	235,988	10.0%	32,144	-7.4%	1,573	10.0%
Saugus Iron Works NHS	17,017	-3.9%	45,625	0.0%	2,127	-3.9%	381	0.0%
Scotts Bluff NM	113,135	-5.3%	0	0.0%	17,913	-5.3%	0	0.0%
Sequoia NP	870,327	3.7%	360	0.0%	2,398,898	3.9%	120	0.0%
Shenandoah NP	1,498,561	5.6%	10,962	0.0%	875,984	4.5%	229	0.0%
Shiloh NMP	356,787	36.5%	144,407	23.7%	51,065	30.5%	2,407	23.7%
Sitka NHP	211,984	9.2%	0	0.0%	6,761	-21.8%	0	0.0%
Sleeping Bear Dunes NL	1,127,107	-5.7%	0	0.0%	484,083	-13.6%	0	0.0%
Springfield Armory NHS	27,044	12.7%	0	0.0%	4,507	12.7%	0	0.0%
Statue of Liberty NM ⁶	4,317,998	-21.6%	0	0.0%	1,079,500	-21.6%	0	0.0%
Steamtown NHS	128,435	-19.9%	0	0.0%	16,055	-19.9%	0	0.0%
Stones River NB	192,084	3.2%	1,461	-2.9%	18,055	1.2%	22	-14.4%
Sunset Crater Volcano NM	159,523	-5.0%	12,000	0.0%	16,617	-5.0%	333	0.0%
Tallgrass Prairie NPRES	18,149	0.6%	0	0.0%	3,025	0.6%	0	0.0%
Thaddeus Kosciuszko NMEM	7,722	-9.0%	0	0.0%	161	-9.0%	0	0.0%
Theodore Roosevelt Birthplace NHS	11,198	-43.5%	1,058	-2.7%	1,014	-42.5%	182	-8.9%
Theodore Roosevelt Inaugural NHS	20,684	30.8%	0	0.0%	3,524	21.8%	0	0.0%
Theodore Roosevelt Island	190,029	6.3%	0	0.0%	28,504	6.3%	0	0.0%
Theodore Roosevelt NP	446,609	3.4%	6,578	0.0%	95,509	-4.7%	181	0.0%
Thomas Jefferson Memorial	2,225,756	12.6%	0	0.0%	92,740	12.6%	0	0.0%
Thomas Stone NHS	5,241	18.7%	0	0.0%	218	18.6%	0	0.0%
Timpanogos Cave NM	126,270	9.7%	0	0.0%	28,235	9.5%	0	0.0%
Timucuan Ecological & Historic Res	707,183	8.7%	0	0.0%	100,780	20.1%	0	0.0%
Tonto NM	80,006	5.2%	0	0.0%	12,471	20.3%	0	0.0%
Tumacacori NHP	49,570	-7.7%	0	0.0%	2,754	-7.7%	0	0.0%
Tuskegee Institute NHS	37,843	-34.7%	0	0.0%	5,538	-38.7%	0	0.0%
Tuzigoot NM	116,323	2.5%	240	0.0%	7,271	2.5%	5	0.0%
Ulysses S. Grant NHS	22,421	25.3%	0	0.0%	2,803	25.3%	0	0.0%

**Table 5: 2001 Recreation & Non-Recreation Visits / Visitor Days
by Park (cont.)**

PARKS	VISITS				DAYS			
	PARK NAME	REC	Percent Change	NON-REC	Percent Change	REC	Percent Change	NON-REC
Upper Delaware SRR	306,639	11.0%	2,130	0.0%	111,251	15.0%	45	0.0%
USS Arizona Memorial	1,436,006	-0.6%	7,950	1.9%	239,334	-0.6%	1,325	1.9%
Valley Forge NHP	1,230,025	-8.9%	5,472,049	-6.9%	208,754	-9.4%	91,201	-6.9%
Vanderbilt Mansion NHS	396,656	-3.4%	0	0.0%	43,927	-3.3%	0	0.0%
Vicksburg NMP	992,284	6.2%	0	0.0%	180,710	6.0%	0	0.0%
Vietnam Veterans Memorial	3,704,008	-2.1%	0	0.0%	154,334	-2.1%	0	0.0%
Virgin Islands NP	677,401	-3.8%	329,183	-6.7%	347,168	-3.8%	15,687	2.7%
Voyageurs NP	243,374	7.0%	2,580	-1.8%	107,087	9.3%	108	-1.7%
Walnut Canyon NM	102,839	-8.7%	480	0.0%	11,381	-8.7%	20	0.0%
War in the Pacific NHP	149,865	-3.8%	1,248	33.6%	14,804	-17.6%	52	33.5%
Washington Monument ⁶	0	-100.0%	0	0.0%	0	-100.0%	0	0.0%
Weir Farm NHS	17,643	10.9%	0	0.0%	2,594	9.8%	0	0.0%
Whiskeytown-Shasta-Trinity NRA	695,018	-1.1%	6,489	-0.9%	219,094	0.6%	966	-0.2%
White House ⁶	856,042	-27.2%	0	0.0%	52,223	-27.7%	0	0.0%
White Sands NM	518,958	0.7%	757	31.2%	64,593	-2.3%	577	47.4%
Whitman Mission NHS	64,679	-3.5%	888	0.0%	5,390	-3.5%	37	0.0%
William Howard Taft NHS	8,946	8.2%	0	0.0%	746	8.2%	0	0.0%
Wilson's Creek NB	223,531	13.8%	0	0.0%	38,219	13.3%	0	0.0%
Wind Cave NP	650,357	-2.7%	223,669	5.2%	176,919	-6.8%	6,151	5.2%
Wolf Trap Farm Park	539,999	3.1%	0	0.0%	180,000	3.1%	0	0.0%
Women's Rights NHP	23,771	-10.3%	1,344	0.0%	1,800	-5.5%	56	0.0%
Wrangell-St. Elias NP	28,643	1.1%	13	0.0%	109,798	1.1%	13	0.0%
Wright Brothers NMEM	438,548	2.1%	2,190	0.0%	36,546	2.1%	91	0.0%
Wupatki NM	239,476	-1.6%	6,531	0.0%	39,991	-1.4%	327	0.0%
Yellowstone NP	2,758,526	-2.8%	924,884	-3.3%	5,247,424	0.5%	43,714	-2.3%
Yosemite NP	3,368,731	-0.9%	148,463	-0.5%	5,235,394	0.2%	297,649	-0.1%
Yukon-Charley Rivers NPRES	6,571	78.7%	0	0.0%	32,079	1.8%	0	0.0%
Zion NP	2,217,779	-8.8%	21,900	0.0%	1,284,241	-4.7%	456	0.0%
NPS TOTAL	279,873,926	-2.1%	144,428,625	3.0%	103,934,619	-1.9%	6,531,682	3.0%

Figure 1: Recreations Visitors by Month for 2001

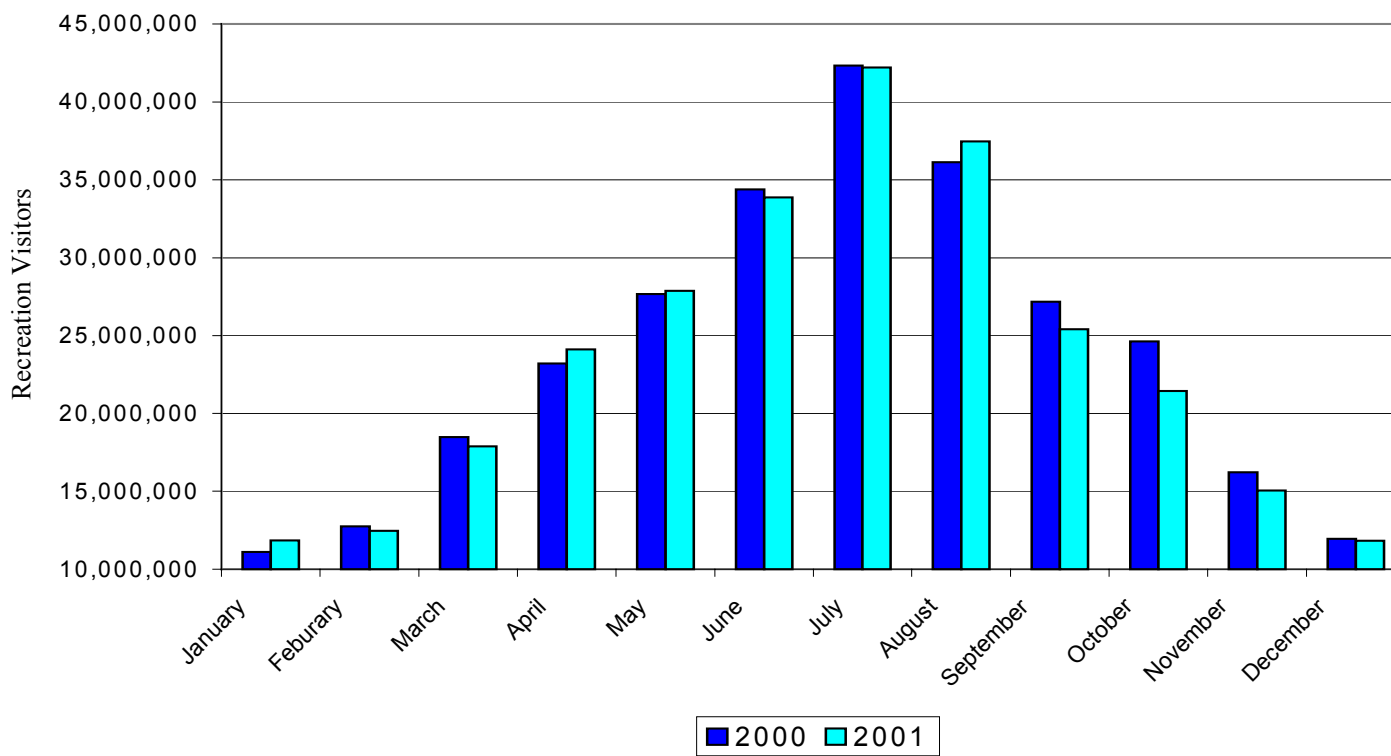


Figure 2: Average Number of Visitors Per Day to NPS Areas

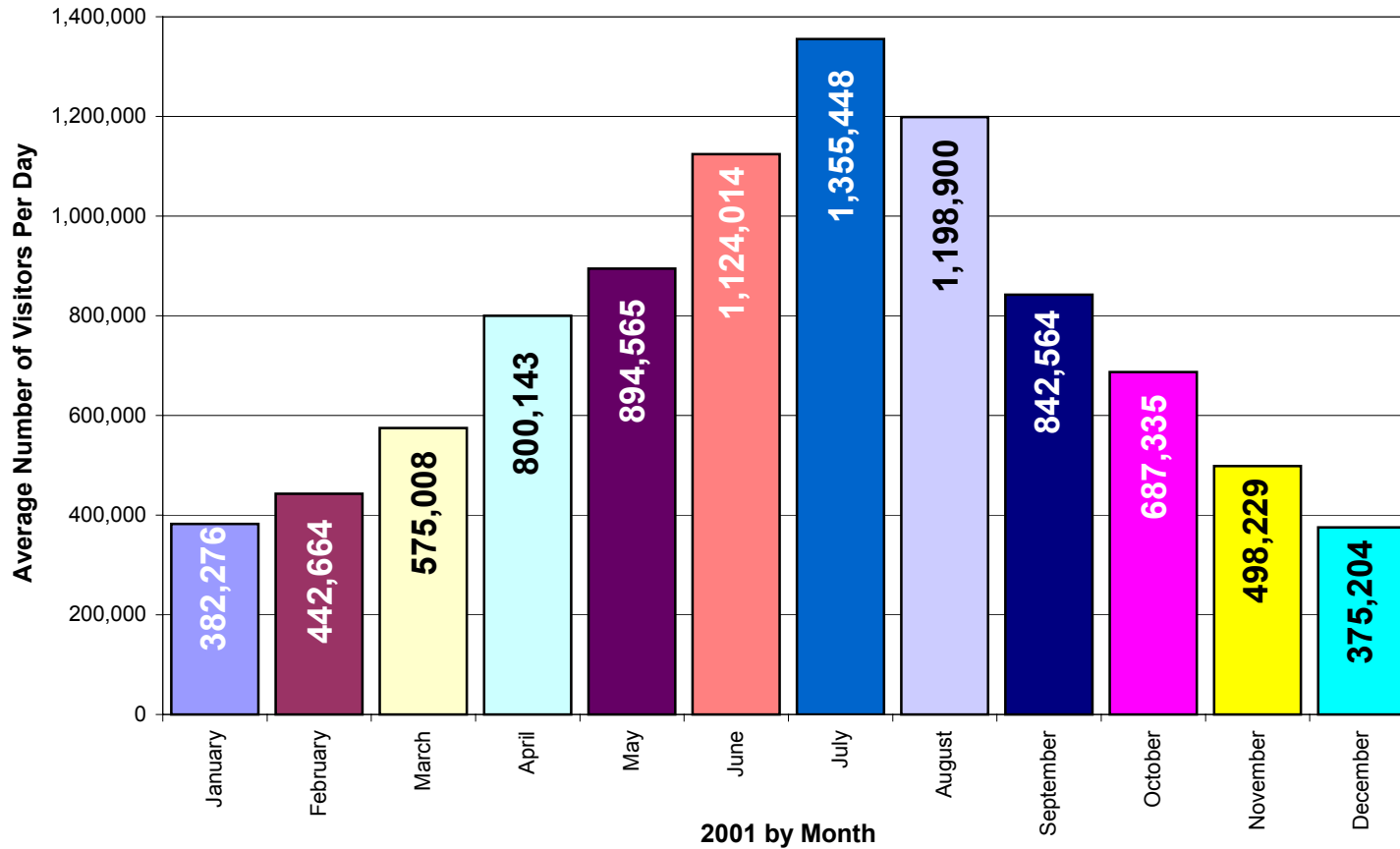


Table 6: 2001 Overnight Stays by Park

PARK NAME	CONCESSIONER		NPS CAMPGROUNDS		BACK COUNTRY	MISC	NON-REC	TOTAL
	LODGING	CAMPGDS	TENTS	RVS				
Acadia NP	0	0	118,545	24,747	0	10,382	0	153,674
Amistad NRA	0	0	1,788	16,007	4,947	622	0	23,364
Aniakchak NM	0	0	0	0	312	0	66	378
Apostle Islands NL	0	0	0	0	19,263	10,614	0	29,877
Arches NP	0	0	29,711	12,466	414	4,322	0	46,913
Assateague Island NS	0	0	59,280	19,881	2,609	13,603	0	95,373
Badlands NP	8,019	0	27,574	11,279	692	0	0	47,564
Bandelier NM	0	0	7,425	4,235	2,173	1,543	0	15,376
Big Bend NP	43,127	11,339	35,218	32,493	28,826	37,072	0	188,075
Big Cypress NPRES	0	0	6,626	15,582	14,326	0	0	36,534
Big South Fork NRRRA	14,718	0	10,265	31,768	8,473	4,003	0	69,227
Big Thicket NPRES	0	0	0	0	1,257	0	0	1,257
Bighorn Canyon NRA	0	0	4,856	11,191	454	0	0	16,501
Black Canyon of the Gunnison NP	0	0	7,318	4,751	1,729	0	0	13,798
Blue Ridge Parkway	58,094	15,490	53,770	44,059	3,988	1,294	0	176,695
Bryce Canyon NP	45,734	0	33,618	54,690	1,864	1,671	0	137,577
Buffalo NR	7,701	0	73,204	21,080	42,427	11,759	0	156,171
Canaveral NS	0	0	0	0	4,332	0	0	4,332
Canyon de Chelly NM	31,390	0	12,327	20,073	1,148	4,309	0	69,247
Canyonlands NP	0	0	19,287	7,787	70,745	6,279	0	104,098
Cape Cod NS	4,605	0	0	0	0	12,388	0	16,993
Cape Hatteras NS	0	0	69,815	29,711	0	4,599	344	104,469
Cape Krusenstern NM	0	0	0	0	0	0	261	261
Cape Lookout NS	15,502	0	0	0	11,190	909	0	27,601
Capitol Reef NP	0	0	16,341	17,928	1,721	1,844	0	37,834
Carlsbad Caverns NP	0	0	0	0	157	0	0	157
Catoctin Mountain Park	0	0	8,700	1,146	120	28,100	0	38,066
Cedar Breaks NM	0	0	1,731	1,171	0	0	0	2,902
Chaco Culture NHP	0	0	12,039	4,549	0	2,971	0	19,559
Channel Islands NP	0	0	0	0	10,326	87,335	27,246	124,907
Chesapeake & Ohio Canal NHP	0	0	5,014	0	100	0	0	5,114
Chickamauga & Chattanooga NMP	0	0	0	0	0	1,638	0	1,638
Chickasaw NRA	0	0	45,115	29,392	0	24,449	0	98,956
Chiricahua NM	0	0	5,069	4,970	0	901	0	10,940
Colorado NM	0	0	10,224	5,732	163	0	0	16,119
Congaree Swamp NM	0	0	0	0	454	840	0	1,294
Cowpens NB	0	0	0	0	0	58	0	58
Crater Lake NP	31,762	39,683	4,292	0	2,009	0	0	77,746
Craters of the Moon NM	0	0	5,019	5,841	145	690	0	11,695

Table 6: 2001 Overnight Stays by Park (cont.)

PARK NAME	CONCESSIONER		NPS CAMPGROUNDS		BACK COUNTRY	MISC	NON-REC	TOTAL
	LODGING	CAMPGDS	TENTS	RVS				
Cumberland Gap NHP	0	0	3,185	7,747	1,897	1,915	0	14,744
Cumberland Island NS	0	0	13,369	0	7,269	0	0	20,638
Curecanti NRA	0	0	12,844	48,216	113	973	0	62,146
Cuyahoga Valley NP	2,336	0	0	0	0	2,791	0	5,127
Death Valley NP	32,798	4,970	44,982	137,046	0	114	0	219,910
Delaware Water Gap NRA	0	27,890	0	0	45,575	22,230	0	95,695
Denali NP	19,106	0	13,061	29,809	35,301	1,457	0	98,734
Devils Postpile NM	0	0	3,305	1,201	0	0	0	4,506
Devils Tower NM	0	0	6,932	4,767	0	0	0	11,699
Dinosaur NM	0	0	19,665	7,402	29,011	344	0	56,422
Dry Tortugas NP	0	0	6,565	0	0	21,855	9,488	37,908
El Malpais NM	0	0	0	0	781	0	0	781
El Morro NM	0	0	1,513	1,165	0	29	0	2,707
Everglades NP	39,637	0	17,103	24,732	23,411	2,922	0	107,805
Fire Island NS	0	0	6,185	0	0	43,151	0	49,336
Fort Donelson NB	0	0	0	0	0	196	0	196
Fort Necessity NB	0	0	0	0	0	110	0	110
Fort Pulaski NM	0	0	0	0	0	336	0	336
Gates of the Arctic NP	0	0	0	0	1,366	0	314	1,680
Gateway NRA	0	0	0	0	0	4,944	0	4,944
Gauley River NRA	0	0	2,552	2,338	0	0	0	4,890
Gettysburg NMP	0	0	0	0	0	26,684	0	26,684
Glacier Bay NP	17,252	0	1,272	0	7,504	8,581	6,400	41,009
Glacier NP	110,039	0	95,034	76,846	28,915	0	0	310,834
Glen Canyon NRA	128,147	86,465	6,982	4,404	32,799	1,710,862	42	1,969,701
Golden Gate NRA	51,102	0	2,823	0	658	14,121	0	68,704
Grand Canyon NP ⁴	561,668	41,034	170,219	107,308	250,876	20,967	0	1,152,072
Grand Portage NM	0	0	0	0	103	0	0	103
Grand Teton NP	219,069	44,917	113,720	100,219	32,700	16,642	0	527,267
Great Basin NP	0	0	22,480	14,073	211	1,092	0	37,856
Great Sand Dunes NP	0	0	23,625	14,206	1,982	6,453	0	46,266
Great Smoky Mountains NP	10,626	0	146,724	125,147	76,919	21,428	0	380,844
Greenbelt Park	0	0	13,597	5,857	0	0	0	19,454
Guadalupe Mountains NP	0	0	9,973	5,445	2,853	2,059	0	20,330
Gulf Islands NS	0	0	26,425	128,603	3,714	7,736	6,159	172,637
Haleakala NP	0	0	17,644	0	2,705	3,252	0	23,601
Hawaii Volcanoes NP	30,059	0	9,684	554	3,715	74,808	0	118,820
Hot Springs NP	0	0	2,968	2,564	0	0	0	5,532
Hovenweep NM	0	0	898	452	0	0	0	1,350

Table 6: 2001 Overnight Stays by Park (cont.)

PARK NAME	CONCESSIONER		NPS CAMPGROUNDS		BACK COUNTRY	MISC	NON-REC	TOTAL
	LODGING	CAMPGDS	TENTS	RVS				
Indiana Dunes NL	0	0	16,961	4,607	0	6,400	0	27,968
Isle Royale NP	6,576	535	6,731	0	49,077	3,575	477	66,971
John D. Rockefeller, Jr., Mem P	25,830	31,981	0	0	2,524	322	0	60,657
John Day Fossil Beds NM	0	0	0	0	0	300	0	300
Joshua Tree NP	0	0	128,532	44,856	5,868	55,143	0	234,399
Katmai NP	3,501	0	2,315	0	20,903	134	373	27,226
Kenai Fjords NP	0	0	1,574	0	2,973	0	0	4,547
Kennesaw Mountain NBP	0	0	0	0	0	34	0	34
Kings Canyon NP	46,114	0	71,608	30,265	81,057	6,574	0	235,618
Kings Mountain NMP	0	0	0	0	131	0	0	131
Klondike Gold Rush NHP Alaska	0	0	608	455	4,793	0	0	5,856
Lake Chelan NRA	8,319	0	0	0	3,765	5,171	0	17,255
Lake Clark NP	0	0	0	0	2,338	0	0	2,338
Lake Mead NRA	50,189	170,233	98,528	125,403	288,659	154,630	249,921	1,137,563
Lake Meredith NRA	0	0	11,252	56,259	5,307	200	0	73,018
Lake Roosevelt NRA	30,134	0	33,899	39,860	7,731	20,446	0	132,070
Lassen Volcanic NP	5,908	0	54,213	18,918	8,452	7,400	0	94,891
Lava Beds NM	0	0	2,619	982	5	114	0	3,720
Mammoth Cave NP	26,258	0	34,004	14,992	4,981	3,868	0	84,103
Mesa Verde NP	46,818	0	39,591	12,025	0	1,236	0	99,670
Mojave NPRES	0	0	1,459	1,218	0	1,463	0	4,140
Moore's Creek NB	0	0	0	0	221	0	0	221
Mount Rainier NP	43,993	0	63,407	31,010	64,362	2,894	0	205,666
Natchez Trace Parkway	0	0	6,666	18,495	0	0	0	25,161
Natural Bridges NM	0	0	4,511	2,602	0	0	0	7,113
Navajo NM	0	0	1,307	882	491	6	0	2,686
New River Gorge NR	0	0	10,938	7,915	0	0	0	18,853
North Cascades NP	0	0	0	0	16,243	0	0	16,243
Obed WSR	0	0	2,515	46	1,583	0	0	4,144
Olympic NP	74,124	9,642	123,847	78,440	107,795	0	0	393,848
Oregon Caves NM	3,212	0	0	0	0	0	0	3,212
Organ Pipe Cactus NM	0	0	7,558	31,633	3,098	1,552	0	43,841
Ozark NSR	949	0	67,184	16,184	19,090	41,791	0	145,198
Padre Island NS	0	0	13,789	37,746	5,546	2,728	0	59,809
Perry's Victory and Internatl Mem	0	0	0	0	0	4,264	0	4,264
Petrified Forest NP	0	0	0	0	579	0	1,074	1,653
Pictured Rocks NL	0	0	13,240	3,437	13,773	0	0	30,450
Point Reyes NS	8,067	2,558	0	0	22,944	0	0	33,569

Table 6: 2001 Overnight Stays by Park (cont.)

PARK NAME	CONCESSIONER		NPS CAMPGROUNDS		BACK COUNTRY	MISC	NON-REC	TOTAL
	LODGING	CAMPGDS	TENTS	RVS				
Prince William Forest Park	0	24,041	11,706	486	64	28,694	0	64,991
Redwood NP 6	5,169	0	4,049	19,584	1,537	4,116	0	34,455
Rio Grande WSR	0	0	0	0	5,651	0	0	5,651
Rocky Mountain NP	0	0	95,055	70,638	41,285	3,133	0	210,111
Ross Lake NRA	6,007	0	19,561	12,303	12,056	1,566	0	51,493
Saguaro NP	0	0	0	0	1,683	0	0	1,683
Saint Croix NSR	0	0	0	0	31,451	0	0	31,451
Salinas Pueblo Missions NM	0	0	0	0	0	11	0	11
San Francisco Maritime NHP	0	0	0	0	0	11,381	0	11,381
Santa Monica Mountains NRA	0	0	0	0	144	0	0	144
Sequoia NP	58,445	0	103,216	33,884	88,986	2,200	0	286,731
Shenandoah NP	112,110	0	95,637	44,811	42,563	0	0	295,121
Sleeping Bear Dunes NL	0	0	34,138	23,958	24,898	0	0	82,994
Theodore Roosevelt NP	0	0	9,997	12,320	771	2,487	0	25,575
Valley Forge NHP	0	0	0	0	0	2,500	0	2,500
Vicksburg NMP	0	0	0	0	0	222	0	222
Virgin Islands NP	20,377	20,791	0	0	0	179,977	17,999	239,144
Voyageurs NP	1,223	0	0	0	18,346	0	0	19,569
Whiskeytown-Shasta-Trinity NRA	0	15,262	0	722	2,860	26,104	0	44,948
White Sands NM	0	0	0	0	2,155	0	0	2,155
Wind Cave NP	0	0	4,897	3,155	401	0	0	8,453
Wupatki NM	0	0	0	0	52	0	0	52
Yellowstone NP	584,929	461,787	76,297	63,635	43,111	14,690	0	1,244,449
Yosemite NP	848,309	0	473,303	195,916	100,207	24,446	0	1,642,181
Yukon-Charley Rivers NPRES	0	0	0	0	15,492	0	0	15,492
Zion NP	75,682	0	80,640	62,568	28,142	11,274	0	258,306
NPS TOTAL	3,574,734	1,008,618	3,326,852	2,404,840	2,032,886	2,925,293	320,164	15,593,387

Figure 3: National Park Service Camping

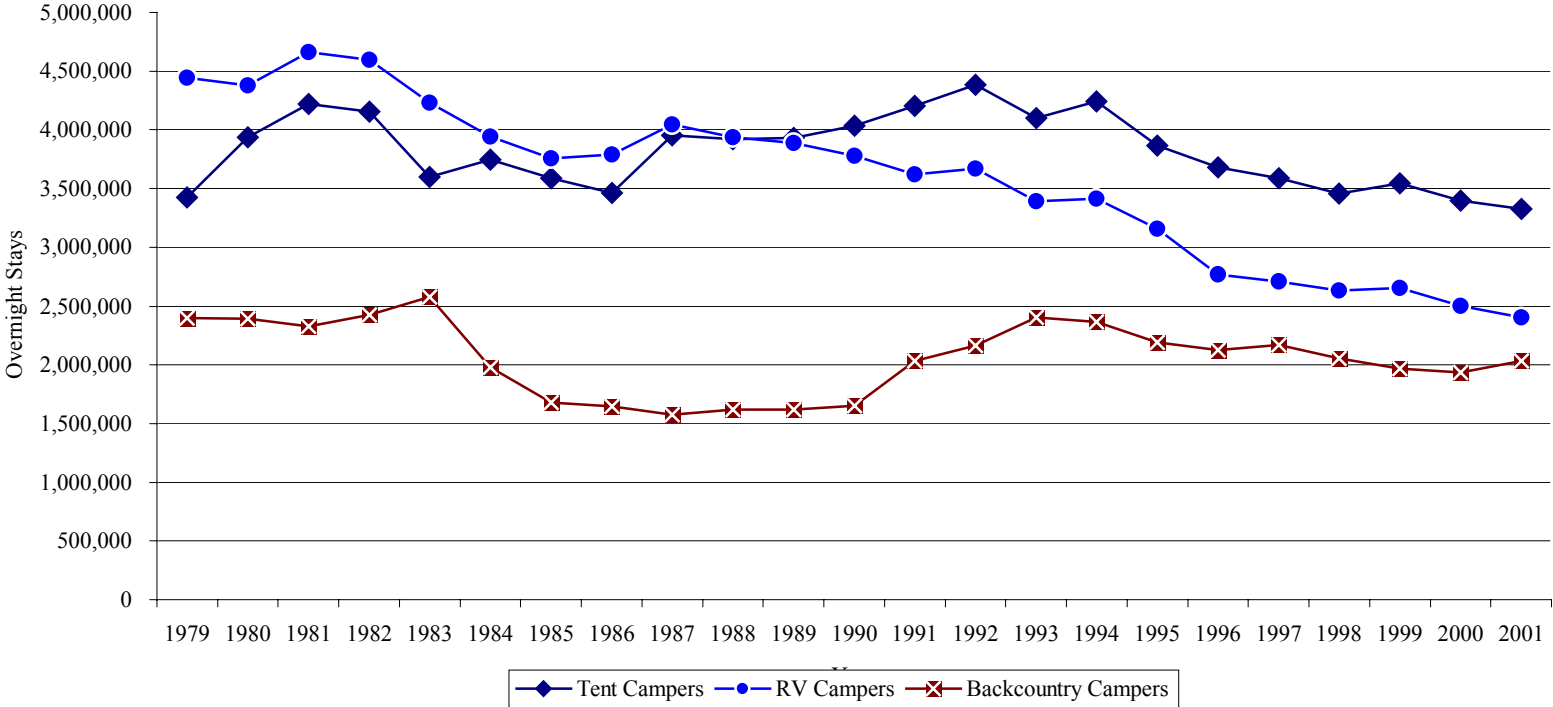


Figure 4: National Park Service Concession Overnight Stays

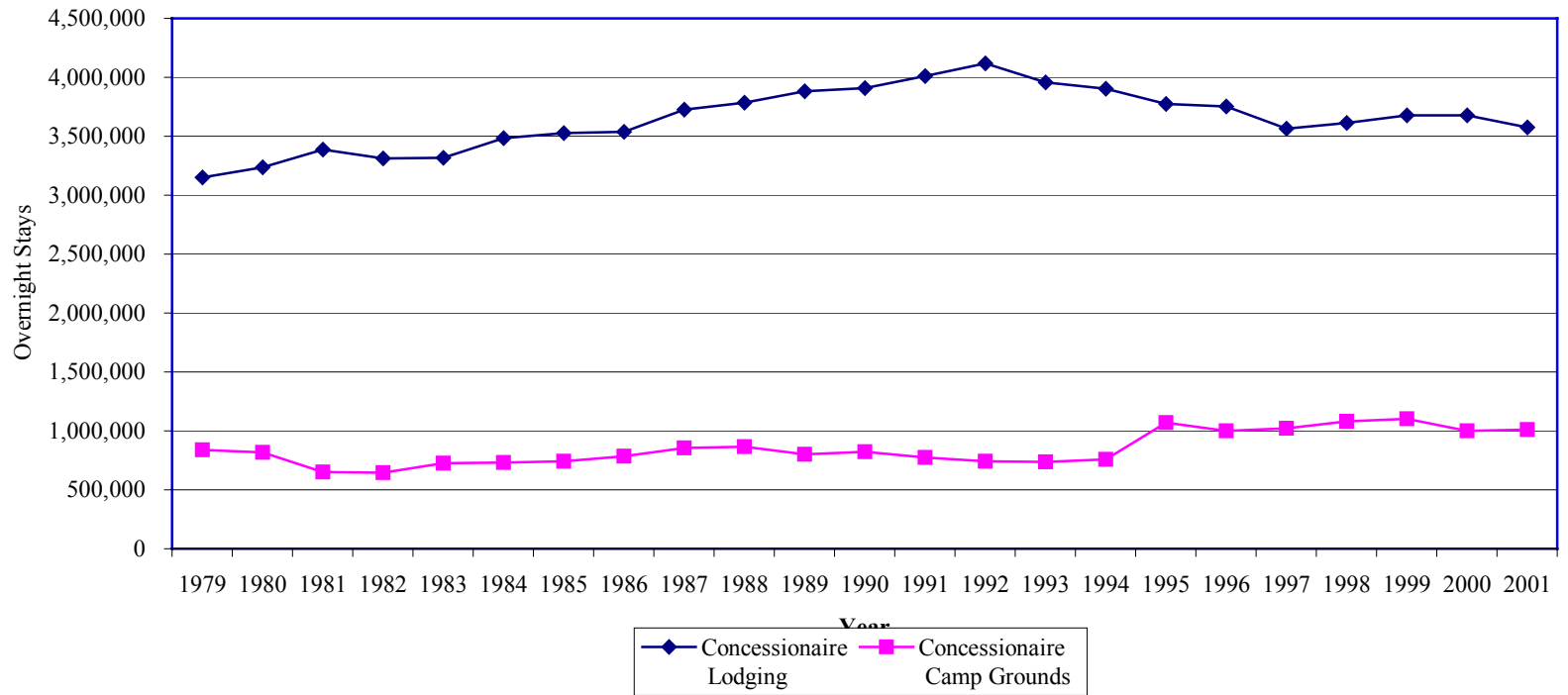


Table 7: 2001 Affiliated and Non-Reporting Areas

AFFILIATED AREAS	AREAS NOT REPORTING PUBLIC USE
Aleutian World War II NHS	Alagnak Wild River
American Memorial Park	Appalachian NST
Benjamin Franklin NMEM	Boston Harbor Islands NRA
John H. Chafee Blackstone River Valley NHC	Brices Cross Roads NBS
Chicago Portage NHS	Brown V. Board of Education NHS
Chimney Rock NHS	Buck Island Reef NM
David Berger NMem	Cane River Creole NHP & Heritage Area
Delaware and Lehigh Navigational Canal NHC	Ebey's Landing NHR
Fallen Timbers Battlefield and Fort Miami NHS	First Ladies NHS
Father Marquette NMem	Governor's Island NM ⁸
Gloria Dei (Old Swedes') Church NHS	Great Egg Harbor S&RR
Green Springs Historic District	Great Sand Dunes NPRES
Historic Camden	Hohokam Pima NM
Ice Age National Scenic Trail	Keweenaw NHP
Ice Age National Scientific Reserve	Little River Canyon Npres
Illinois and Michigan Canal NHC	Little Rock Central High School NHS
International Peace Garden	Middle Delaware NSR ⁸
Jamestown NHS	Minidoka Internment NM ⁸
Lewis and Clark NHT	Minuteman Missile NHS
McLoughlin House NHS	Mississippi National River and Recreation Area
Pinelands NRes	Missouri National Recreational River
Port Chicago Naval Magazine NMem	Natchez Trace National Scenic Trail
Quinebaug & Shetucket Rivers Valley NHC	National Mall
Roosevelt Campobello International Park	National Park of American Samoa
Sewall-Belmont House NHS	Niobrara National Scenic River
Thomas Cole NHS	Palo Alto Battlefield NHS
Touro Synagogue NHS	Potomac Heritage National Scenic Trail
	Poverty Point NM
	Rosie the Riveter/ World War II Home Front NHP
	Saint Croix Island International HS
	Salt River Bay NHP & Ecological Preserve
	Tupelo NB
	Tuskegee Airmen NHS
	Virgin Islands Coral Reef NM ⁸
	Washita Battlefield NHS
	World War II MEM ⁸

Table 8: 2001 Recreation Visits/Visitor Days by State

PARKS BY STATE	Recreation Visits	Percent Change	Recreation Visitor Days	Percent Change
ALABAMA				
Horseshoe Bend NMP	108,190	-13.7%	21,463	-13.6%
Natchez Trace Parkway	388,665	-3.2%	131,169	-3.2%
Russell Cave NM	20,449	-12.9%	3,193	-13.7%
Tuskegee Institute NHS	37,843	-34.7%	5,538	-38.7%
Subtotal Alabama	555,147	-8.8%	161,364	-6.8%
ALASKA				
Aniakchak NM	206	-17.9%	691	0.0%
Bering Land Bridge NPRES	3,525	16.5%	881	16.5%
Cape Krusenstern NM	4,060	100.4%	868	128.2%
Denali NP	360,191	-1.0%	457,568	-2.7%
Gates of the Arctic NP	4,505	-60.1%	2,906	518.2%
Glacier Bay NP	380,114	-1.2%	426,195	-2.6%
Katmai NP	67,038	-6.1%	69,304	-4.5%
Kenai Fjords NP	262,353	3.0%	71,822	2.9%
Klondike Gold Rush NHP Alaska	713,436	2.4%	249,644	0.7%
Kobuk Valley NP	4,217	59.4%	1,120	61.6%
Lake Clark NP	4,397	-32.3%	5,019	5.3%
Noatak NPRES	3,912	73.3%	3,789	83.6%
Sitka NHP	211,984	9.2%	6,761	-21.8%
Wrangell-St. Elias NP	28,643	1.1%	109,798	1.1%
Yukon-Charley Rivers NPRES	6,571	78.7%	32,079	1.8%
Subtotal Alaska	2,055,152	1.4%	1,438,446	-1.2%

**Table 8: 2001 Recreation Visits/Visitor Days
by State (cont.)**

PARKS BY STATE	Recreation Visits	Percent Change	Recreation Visitor Days	Percent Change
ARIZONA				
Canyon de Chelly NM	833,202	-1.8%	485,848	-5.0%
Casa Grande Ruins NM	132,630	6.8%	9,395	6.8%
Chiricahua NM	75,824	-11.4%	30,384	-10.7%
Coronado NMEM	89,107	5.0%	10,564	11.7%
Fort Bowie NHS	8,858	-0.4%	1,476	-0.4%
Glen Canyon NRA	187,202	-8.9%	364,814	-3.7%
Grand Canyon NP ⁴	4,104,809	-8.0%	5,093,145	-10.4%
Hubbell Trading Post NHS	234,631	8.4%	10,102	8.4%
Lake Mead NRA	2,116,387	-3.3%	1,459,339	-5.4%
Montezuma Castle NM	710,595	-10.0%	59,216	-10.0%
Navajo NM	57,904	-12.4%	12,430	-11.2%
Organ Pipe Cactus NM	329,028	27.4%	91,942	13.2%
Petrified Forest NP	583,904	-3.5%	116,673	-2.5%
Pipe Spring NM	50,783	-2.3%	4,232	-2.3%
Saguaro NP	725,874	-5.1%	99,761	1.6%
Sunset Crater Volcano NM	159,523	-5.0%	16,617	-5.0%
Tonto NM	80,006	5.2%	12,471	20.3%
Tumacacori NHP	49,570	-7.7%	2,754	-7.7%
Tuzigoot NM	116,323	2.5%	7,271	2.5%
Walnut Canyon NM	102,839	-8.7%	11,381	-8.7%
Wupatki NM	239,476	-1.6%	39,991	-1.4%
Subtotal Arizona	10,988,475	-4.7%	7,939,804	-8.3%
ARKANSAS				
Arkansas Post NMEM	43,502	-0.9%	5,438	-0.9%
Buffalo NR	794,676	8.6%	517,479	4.7%
Fort Smith NHS	84,974	58.5%	9,418	58.5%
Hot Springs NP	1,296,786	-3.1%	74,144	4.2%
Little Rock Central High School NHS ²	21,078	0.0%	1,757	0.0%
Pea Ridge NMP	77,583	1.4%	12,931	1.4%
Subtotal Arkansas	2,318,599	3.3%	621,166	5.3%

**Table 8: 2001 Recreation Visits/Visitor Days
By State (cont.)**

PARKS BY STATE	Recreation Visits	Percent Change	Recreation Visitor Days	Percent Change
CALIFORNIA				
Cabrillo NM	1,034,753	-8.9%	126,055	-8.7%
Channel Islands NP	520,428	7.8%	443,174	24.5%
Death Valley NP	1,014,636	-13.9%	633,475	-10.7%
Devils Postpile NM	155,478	5.1%	52,105	1.1%
Eugene O'Neill NHS	3,510	-1.9%	1,240	3.2%
Fort Point NHS	1,203,023	-25.2%	55,419	-28.9%
Golden Gate NRA	13,457,900	-7.1%	1,830,271	-3.8%
John Muir NHS	25,257	-22.4%	3,442	-22.8%
Joshua Tree NP	1,280,917	3.8%	762,769	2.0%
Kings Canyon NP	541,787	2.4%	1,444,793	1.9%
Lassen Volcanic NP	376,695	0.5%	354,407	8.7%
Lava Beds NM	113,882	-0.4%	27,446	-6.9%
Manzanar NHS	46,834	23.2%	3,903	23.2%
Mojave NPRES	492,745	10.9%	250,513	10.5%
Muir Woods NM	773,624	-12.5%	85,937	-12.5%
Pinnacles NM	178,243	10.0%	53,860	9.4%
Point Reyes NS	2,222,762	-4.4%	955,750	-1.2%
Redwood NP ⁶	388,352	1.3%	173,907	-17.3%
San Francisco Maritime NHP	3,256,974	-5.1%	292,883	-7.5%
Santa Monica Mountains NRA	532,898	13.5%	99,326	22.6%
Sequoia NP	870,327	3.7%	2,398,898	3.9%
Whiskeytown-Shasta-Trinity NRA	695,018	-1.1%	219,094	0.6%
Yosemite NP	3,368,731	-0.9%	5,235,394	0.2%
Subtotal California	32,554,774	-5.4%	15,504,057	0.2%

**Table 8: 2001 Recreation Visits/Visitor Days
by State (cont.)**

PARKS BY STATE		Recreation Visits	Percent Change	Recreation Visitor Days	Percent Change
COLORADO					
	Bent's Old Fort NHS	30,987	1.7%	4,519	1.7%
	Black Canyon of the Gunnison NP	181,018	-5.5%	81,402	-2.4%
	Colorado NM	237,604	-11.8%	62,635	-10.6%
	Curecanti NRA	879,776	-13.9%	332,442	-17.6%
	Dinosaur NM	241,516	-17.8%	120,299	-14.2%
	Florissant Fossil Beds NM	79,669	-3.0%	8,252	-3.2%
	Great Sand Dunes NP	277,523	6.4%	145,528	19.3%
	Hovenweep NM	16,454	-13.6%	3,930	-10.6%
	Mesa Verde NP	513,409	13.5%	342,032	16.7%
	Rocky Mountain NP	3,139,685	-1.4%	1,849,991	-2.7%
	Subtotal Colorado	5,597,641	-3.6%	2,951,029	-2.6%
CONNECTICUT					
	Weir Farm NHS	17,643	10.9%	2,594	9.8%
	Subtotal Connecticut	17,643	10.9%	2,594	9.8%
DISTRICT OF COLUMBIA					
	Chesapeake & Ohio Canal NHP	3,547,941	34.0%	591,323	34.0%
	Ford's Theatre NHS	1,224,540	5.2%	98,220	0.0%
	Franklin Delano Roosevelt Memorial	2,866,417	-1.8%	119,434	-1.9%
	Frederick Douglass NHS	29,618	-8.7%	2,468	-1.7%
	Korean War Veterans Memorial	2,961,477	1.3%	123,478	-0.4%
	Lincoln Memorial	3,968,357	-1.0%	165,348	-1.0%
	Lyndon B. Johnson Mem Grove Of Potomac	529,503	8.5%	22,063	8.5%
	Mary Mcleod Bethune Council House NHS	5,769	1.3%	962	1.3%
	National Capital Parks Central	1,860,851	-33.9%	173,925	-35.4%
	National Capital Parks East	1,208,760	6.3%	145,278	8.9%
	Pennsylvania Avenue NHS ⁶	225,962	-18.9%	6,214	-18.9%
	President's Park ⁶	1,401,108	14.9%	181,104	34.3%
	Rock Creek Park	2,185,813	7.2%	259,735	9.6%
	Thomas Jefferson Memorial	2,225,756	12.6%	92,740	12.6%
	Vietnam Veterans Memorial	3,704,008	-2.1%	154,334	-2.1%
	Washington Monument ⁶	0	-100.0%	0	-100.0%
	White House ⁶	856,042	-27.2%	52,223	-27.7%
	Subtotal District of Columbia	28,801,922	0.0%	2,188,851	4.9%

**Table 8: 2001 Recreation Visits/Visitor Days
by State (cont.)**

PARKS BY STATE		Recreation Visits	Percent Change	Recreation Visitor Days	Percent Change
FLORIDA					
	Big Cypress NPRES	409,771	-18.9%	165,727	13.0%
	Biscayne NP	489,343	24.5%	122,336	24.5%
	Canaveral NS	1,062,962	-4.7%	227,554	-3.7%
	Castillo de San Marcos NM	613,465	-5.4%	38,342	-5.4%
	De Soto NMEM	221,282	-12.7%	30,426	-12.7%
	Dry Tortugas NP	79,186	-5.4%	82,358	-1.5%
	Everglades NP	1,049,851	5.5%	520,734	5.0%
	Fort Caroline NMEM	195,303	2.8%	16,275	2.8%
	Fort Matanzas NM	682,480	7.2%	57,626	7.0%
	Gulf Islands NS	3,412,425	-0.9%	838,683	-1.7%
	Timucuan Ecological & Historic RES	707,183	8.7%	100,780	20.1%
	Subtotal Florida	8,923,251	0.1%	2,200,841	2.7%
GEORGIA					
	Andersonville NHS	160,974	-3.8%	26,829	-3.8%
	Chattahoochee River NRA	2,751,256	3.4%	917,085	3.4%
	Chickamauga & Chattanooga NMP	374,957	-10.5%	59,273	-11.2%
	Cumberland Island NS ⁴	45,193	3.2%	67,639	6.2%
	Fort Frederica NM	290,705	19.1%	24,450	19.1%
	Fort Pulaski NM	357,953	0.9%	75,078	1.0%
	Jimmy Carter NHS	59,716	14.6%	2,488	14.6%
	Kennesaw Mountain NBP	1,329,271	-0.9%	179,462	-1.4%
	Martin Luther King, Jr., NHS	598,475	-2.2%	96,899	-5.6%
	Ocmulgee NM	118,565	-7.2%	14,821	-7.2%
	Subtotal Georgia	6,087,065	1.1%	1,464,024	1.5%
GUAM					
	War in the Pacific NHP	149,865	-3.8%	14,804	-17.6%
	Subtotal Guam	149,865	-3.8%	14,804	-17.6%

**Table 8: 2001 Recreation Visits/Visitor Days
by State (cont.)**

PARKS BY STATE		Recreation Visits	Percent Change	Recreation Visitor Days	Percent Change
HAWAII					
	Haleakala NP	1,410,974	-12.9%	282,364	-11.1%
	Hawaii Volcanoes NP	1,343,286	-11.3%	740,873	-7.2%
	Kalaupapa NHP	63,006	-27.6%	42,004	-27.6%
	Kaloko-Honokohau NHP ⁴	54,000	22.3%	11,688	23.5%
	Pu'uuhonua O Honaunau NHP	402,071	-4.2%	33,506	-4.2%
	Puukohola Heiau NHS	54,745	0.9%	2,281	0.9%
	USS Arizona Memorial	1,436,006	-0.6%	239,334	-0.6%
	Subtotal Hawaii	4,764,088	-8.1%	1,352,050	-7.5%
IDAHO					
	City Of Rocks NRES	68,165	2.9%	19,882	2.9%
	Craters of the Moon NM	185,799	-12.2%	44,983	-10.5%
	Hagerman Fossil Beds NM	12,311	-9.5%	1,539	-9.5%
	Nez Perce NHP	159,417	9.2%	12,655	23.8%
	Subtotal Idaho	425,692	-2.7%	79,059	-3.0%
ILLINOIS					
	Lincoln Home NHS	392,214	6.6%	28,960	6.6%
	Subtotal Illinois	392,214	6.6%	28,960	6.6%
INDIANA					
	George Rogers Clark NHP	129,161	-3.8%	14,423	-3.8%
	Indiana Dunes NL	1,735,404	-4.7%	405,835	-4.2%
	Lincoln Boyhood NMEM	146,037	-5.2%	13,691	-5.2%
	Subtotal Indiana	2,010,602	-4.6%	433,949	-4.2%
IOWA					
	Effigy Mounds NM	79,846	2.9%	16,635	2.9%
	Herbert Hoover NHS	183,640	-4.8%	15,303	-4.8%
	Subtotal Iowa	263,486	-2.5%	31,938	-0.9%

**Table 8: 2001 Recreation Visits/Visitor Days
by State (cont.)**

PARKS BY STATE		Recreation Visits	Percent Change	Recreation Visitor Days	Percent Change
KANSAS					
	Fort Larned NHS	35,581	-11.0%	5,930	-11.0%
	Fort Scott NHS	40,673	11.5%	5,085	11.5%
	Nicodemus NHS	34,251	57.9%	2,854	57.9%
	Tallgrass Prairie NPRES	18,149	0.6%	3,025	0.6%
	Subtotal Kansas	128,654	10.7%	16,894	5.3%
KENTUCKY					
	Abraham Lincoln Birthplace NHS	229,675	-2.8%	19,140	-2.8%
	Big South Fork NRRRA	366,619	6.1%	216,769	5.5%
	Cumberland Gap NHP	887,488	-41.6%	145,575	-32.4%
	Mammoth Cave NP	1,883,580	7.7%	398,033	4.6%
	Subtotal Kentucky	3,367,362	-12.6%	779,517	-5.0%
LOUISIANA					
	Jean Lafitte NHP and PRES	923,604	5.1%	139,962	9.0%
	New Orleans Jazz NHP	45,766	173.9%	7,788	261.2%
	Subtotal Louisiana	969,370	8.3%	147,750	13.2%
MAINE					
	Acadia NP	2,516,551	1.9%	1,122,312	1.8%
	Subtotal Maine	2,516,551	1.9%	1,122,312	1.8%

**Table 8: 2001 Recreation Visits/Visitor Days
by State (cont.)**

PARKS BY STATE	Recreation Visits	Percent Change	Recreation Visitor Days	Percent Change
MARYLAND				
Antietam NB	303,599	5.8%	49,100	-10.6%
Assateague Island NS	626,219	4.8%	463,033	5.3%
Catoctin Mountain Park	532,615	4.7%	176,747	0.9%
Chesapeake & Ohio Canal NHP	375,664	34.0%	62,611	34.0%
Clara Barton NHS	17,382	26.3%	1,449	26.3%
Fort McHenry NM & Historic Shrine ⁷	646,775	-6.4%	80,847	-6.4%
Fort Washington Park	267,032	3.2%	86,412	2.4%
Greenbelt Park	192,154	13.4%	65,757	-8.6%
Hampton NHS	24,096	3.0%	2,049	2.7%
Monocacy NB	18,095	-0.6%	2,262	-0.6%
National Capital Parks East	134,307	6.3%	16,142	8.9%
Piscataway Park	251,261	24.9%	39,258	23.9%
Thomas Stone NHS	5,241	18.7%	218	18.6%
Subtotal Maryland	3,394,440	6.8%	1,045,885	3.4%
MASSACHUSETTS				
Adams NHP	167,500	91.8%	12,589	94.5%
Boston African American NHS	390,130	-0.8%	11,254	4.8%
Boston NHP ⁶	1,981,301	-19.2%	140,992	-41.7%
Cape Cod NS	4,391,478	-4.1%	720,946	-4.1%
Frederick Law Olmsted NHS	10,332	59.0%	1,722	59.0%
John Fitzgerald Kennedy NHS	12,244	-0.1%	510	-0.1%
Longfellow NHS ⁶	0	0.0%	0	0.0%
Lowell NHP	723,568	19.6%	90,155	22.4%
Minute Man NHP	1,072,979	6.8%	134,123	6.8%
New Bedford Whaling NHP	303,342	11.3%	12,639	11.1%
Salem Maritime NHS	748,747	-6.0%	77,560	81.6%
Saugus Iron Works NHS	17,017	-3.9%	2,127	-3.9%
Springfield Armory NHS	27,044	12.7%	4,507	12.7%
Subtotal Massachusetts	9,845,682	-4.0%	1,209,126	-5.0%

**Table 8: 2001 Recreation Visits/Visitor Days
by State (cont.)**

PARKS BY STATE		Recreation Visits	Percent Change	Recreation Visitor Days	Percent Change
MICHIGAN					
	Isle Royale NP	19,431	-7.9%	135,027	10.6%
	Pictured Rocks NL	421,312	-0.3%	186,112	-0.4%
	Sleeping Bear Dunes NL	1,127,107	-5.7%	484,083	-13.6%
	Subtotal Michigan	1,567,850	-4.3%	805,223	-7.4%
MINNESOTA					
	Grand Portage NM	81,428	-12.4%	4,369	-12.0%
	Pipestone NM	88,512	-4.2%	18,441	-4.2%
	Saint Croix NSR	128,952	-30.2%	113,607	10.2%
	Voyageurs NP	243,374	7.0%	107,087	9.3%
	Subtotal Minnesota	542,266	-9.3%	243,503	8.1%
MISSISSIPPI					
	Gulf Islands NS	1,137,475	-0.9%	279,561	-1.7%
	Natchez NHP	287,499	-14.1%	44,536	-13.9%
	Natchez Trace Parkway	4,441,881	-3.2%	1,499,078	-3.2%
	Vicksburg NMP	992,284	6.2%	180,710	6.0%
	Subtotal Mississippi	6,859,139	-2.1%	2,003,885	-2.5%
MISSOURI					
	George Washington Carver NM	41,464	-21.0%	4,492	-21.0%
	Harry S. Truman NHS	45,112	2.1%	3,105	-2.9%
	Jefferson National Expansion Memorial	3,532,524	2.1%	1,177,508	2.1%
	Ozark NSR	1,488,355	-5.1%	335,465	-10.0%
	Ulysses S. Grant NHS	22,421	25.3%	2,803	25.3%
	Wilson's Creek NB	223,531	13.8%	38,219	13.3%
	Subtotal Missouri	5,353,407	0.3%	1,561,593	-0.6%

**Table 8: 2001 Recreation Visits/Visitor Days
by State (cont.)**

PARKS BY STATE		Recreation Visits	Percent Change	Recreation Visitor Days	Percent Change
MONTANA					
	Big Hole NB	56,619	39.9%	7,696	66.4%
	Bighorn Canyon NRA	130,350	1.4%	42,204	0.4%
	Glacier NP	1,680,614	-2.8%	1,171,906	-2.9%
	Grant-Kohrs Ranch NHS	20,188	-3.2%	2,069	-3.2%
	Little Bighorn Battlefield NM	334,567	1.3%	27,904	1.3%
	Yellowstone NP	1,406,848	-2.8%	2,676,186	0.5%
	Subtotal Montana	3,629,186	-1.8%	3,927,965	-0.5%
NEBRASKA					
	Agate Fossil Beds NM	17,399	-3.0%	3,519	-3.0%
	Homestead National Monument Of America	52,077	18.6%	7,379	18.8%
	Scotts Bluff NM	113,135	-5.3%	17,913	-5.3%
	Subtotal Nebraska	182,611	0.8%	28,811	0.2%
NEVADA					
	Great Basin NP	81,712	0.8%	113,504	4.1%
	Lake Mead NRA	6,349,160	-3.3%	4,378,018	-5.4%
	Subtotal Nevada	6,430,872	-3.3%	4,491,521	-5.2%
NEW HAMPSHIRE					
	Saint-Gaudens NHS	37,550	1.4%	6,347	7.0%
	Subtotal New Hampshire	37,550	1.4%	6,347	7.0%

**Table 8: 2001 Recreation Visits/Visitor Days
by State (cont.)**

PARKS BY STATE		Recreation Visits	Percent Change	Recreation Visitor Days	Percent Change
NEW JERSEY					
	Delaware Water Gap NRA	3,455,764	-0.7%	1,297,908	-0.6%
	Edison NHS	54,419	323.1%	5,989	315.7%
	Gateway NRA	1,657,012	4.5%	416,001	0.7%
	Morristown NHP	464,758	0.2%	111,448	5.0%
	Subtotal New Jersey	5,631,953	1.6%	1,831,345	0.3%
NEW MEXICO					
	Aztec Ruins NM	46,451	-10.9%	5,807	-10.9%
	Bandelier NM	313,850	26.4%	100,223	26.7%
	Capulin Volcano NM	60,542	-2.8%	7,125	-2.2%
	Carlsbad Caverns NP	455,621	-2.9%	149,070	-2.9%
	Chaco Culture NHP	68,527	-15.4%	64,558	9.9%
	El Malpais NM ⁵	118,374	54.6%	40,630	50.4%
	El Morro NM	68,886	1.7%	15,764	12.3%
	Fort Union NM	15,100	5.9%	1,485	5.9%
	Gila Cliff Dwellings NM	49,447	7.0%	4,121	7.0%
	Pecos NHP	32,718	-11.9%	4,171	-9.2%
	Petroglyph NM	60,608	-0.9%	5,182	-0.2%
	Salinas Pueblo Missions NM	34,568	-0.8%	6,004	-0.4%
	White Sands NM	518,958	0.7%	64,593	-2.3%
	Subtotal New Mexico	1,843,650	4.4%	468,731	8.1%

**Table 8: 2001 Recreation Visits/Visitor Days
by State (cont.)**

PARKS BY STATE		Recreation Visits	Percent Change	Recreation Visitor Days	Percent Change
NEW YORK					
	Castle Clinton NM ⁶	3,601,635	-21.5%	151,711	-21.4%
	Eleanor Roosevelt NHS	86,012	11.8%	10,752	11.8%
	Federal Hall NMEM ⁶	203,816	-15.7%	10,530	-12.9%
	Fire Island NS	661,692	10.2%	201,798	5.0%
	Fort Stanwix NM	53,065	37.2%	6,633	37.2%
	Gateway NRA	6,628,047	4.5%	1,664,005	0.7%
	General Grant NMEM ⁶	85,107	-23.5%	5,013	-18.4%
	Hamilton Grange NMEM ⁶	22,971	-44.4%	1,454	-47.4%
	Home of Franklin D. Roosevelt NHS	127,624	-2.1%	19,419	-1.7%
	Martin Van Buren NHS	15,950	13.4%	1,356	7.6%
	Sagamore Hill NHS	45,176	-15.1%	9,412	-15.1%
	Saint Paul's Church NHS	11,756	20.3%	1,517	16.0%
	Saratoga NHP	154,897	-5.5%	32,144	-7.4%
	Statue of Liberty NM ⁶	4,317,998	-21.6%	1,079,500	-21.6%
	Theodore Roosevelt Birthplace NHS	11,198	-43.5%	1,014	-42.5%
	Theodore Roosevelt Inaugural NHS	20,684	30.8%	3,524	21.8%
	Upper Delaware SRR	153,320	11.0%	55,626	15.0%
	Vanderbilt Mansion NHS	396,656	-3.4%	43,927	-3.3%
	Women's Rights NHP	23,771	-10.3%	1,800	-5.5%
	Subtotal New York	16,621,375	-10.3%	3,301,131	-8.8%
NORTH CAROLINA					
	Blue Ridge Parkway	12,381,144	4.3%	6,409,674	4.2%
	Cape Hatteras NS	2,592,889	-2.1%	1,001,484	-1.6%
	Cape Lookout NS	625,387	40.2%	163,388	-3.5%
	Carl Sandburg Home NHS	34,769	-1.3%	3,727	-2.1%
	Fort Raleigh NHS	267,464	9.3%	37,406	5.0%
	Great Smoky Mountains NP	4,046,987	-9.6%	2,510,687	-9.6%
	Guilford Courthouse NMP	858,125	4.3%	37,713	5.3%
	Moores Creek NB	88,320	-1.7%	4,932	3.7%
	Wright Brothers NMEM	438,548	2.1%	36,546	2.1%
	Subtotal North Carolina	21,333,633	1.3%	10,205,556	-0.3%

**Table 8: 2001 Recreation Visits/Visitor Days
by State (cont.)**

PARKS BY STATE		Recreation Visits	Percent Change	Recreation Visitor Days	Percent Change
NORTH DAKOTA					
	Fort Union Trading Post NHS	19,551	0.9%	2,064	4.7%
	Knife River Indian Villages NHS	36,280	9.8%	5,139	14.0%
	Theodore Roosevelt NP	446,609	3.4%	95,509	-4.7%
	Subtotal North Dakota	502,440	3.8%	102,712	-3.7%
OHIO					
	Cuyahoga Valley NP	3,123,353	-6.1%	789,881	-8.1%
	Dayton Aviation Heritage NHP	48,489	34.5%	8,082	34.5%
	Hopewell Culture NHP	26,761	-6.5%	2,925	1.6%
	James A. Garfield NHS	21,115	-10.6%	3,519	-10.6%
	Perry's Victory and Internatl Peace Mem	164,402	0.1%	17,127	11.6%
	William Howard Taft NHS	8,946	8.2%	746	8.2%
	Subtotal Ohio	3,393,066	-5.4%	822,279	-7.5%
OKLAHOMA					
	Chickasaw NRA	1,608,792	15.8%	510,734	14.4%
	Oklahoma City NMEM	482,974	15.3%	40,248	15.3%
	Subtotal Oklahoma	2,091,766	15.7%	550,982	14.5%
OREGON					
	Crater Lake NP	457,373	7.1%	252,509	7.5%
	Fort Clatsop NMEM	226,137	5.3%	30,801	5.0%
	John Day Fossil Beds NM	98,489	-2.0%	9,821	-2.0%
	Oregon Caves NM	87,175	-2.3%	26,076	-8.5%
	Subtotal Oregon	869,174	4.5%	319,207	5.4%

**Table 8: 2001 Recreation Visits/Visitor Days
by State (cont.)**

PARKS BY STATE		Recreation Visits	Percent Change	Recreation Visitor Days	Percent Change
PENNSYLVANIA					
	Allegheny Portage Railroad NHS ⁵	142,340	6.7%	13,144	10.9%
	Delaware Water Gap NRA	1,411,509	-0.7%	530,131	-0.6%
	Edgar Allan Poe NHS	12,552	1892.4%	1,046	1892.4%
	Eisenhower NHS	74,826	-2.7%	9,977	-2.7%
	Fort Necessity NB	89,133	-5.0%	11,150	12.2%
	Friendship Hill NHS	33,791	13.0%	6,306	12.0%
	Gettysburg NMP	1,792,380	16.2%	443,599	12.2%
	Hopewell Furnace NHS	64,898	-6.2%	6,490	-6.2%
	Independence NHP ⁶	2,813,047	-11.5%	353,300	-11.1%
	Johnstown Flood NMEM	119,462	-2.3%	10,467	2.2%
	Steamtown NHS	128,435	-19.9%	16,055	-19.9%
	Thaddeus Kosciuszko NMEM	7,722	-9.0%	161	-9.0%
	Upper Delaware SRR	153,320	11.0%	55,626	15.0%
	Valley Forge NHP	1,230,025	-8.9%	208,754	-9.4%
	Subtotal Pennsylvania	8,073,440	-3.0%	1,666,205	-0.8%
PUERTO RICO					
	San Juan NHS ⁴	1,281,528	18.0%	212,071	20.1%
	Subtotal Puerto Rico	1,281,528	18.0%	212,071	20.1%
RHODE ISLAND					
	Roger Williams NMEM	51,816	-7.9%	3,672	-7.9%
	Subtotal Rhode Island	51,816	-7.9%	3,672	-7.9%
SOUTH CAROLINA					
	Charles Pinckney NHS	29,272	21.7%	4,879	21.7%
	Congaree Swamp NM	119,738	25.2%	32,091	20.4%
	Cowpens NB	218,361	2.6%	11,140	5.5%
	Fort Sumter NM ⁵	919,443	188.1%	184,909	209.6%
	Kings Mountain NMP	267,402	3.8%	26,552	24.0%
	Ninety Six NHS	29,194	2.5%	3,041	2.5%
	Subtotal South Carolina	1,583,410	68.9%	262,611	109.5%

**Table 8: 2001 Recreation Visits/Visitor Days
by State (cont.)**

PARKS BY STATE		Recreation Visits	Percent Change	Recreation Visitor Days	Percent Change
SOUTH DAKOTA					
	Badlands NP	955,469	-13.6%	358,094	-13.4%
	Jewel Cave NM	125,330	-2.8%	11,444	-3.6%
	Mount Rushmore NMEM	1,904,119	1.9%	208,923	1.9%
	Wind Cave NP	650,357	-2.7%	176,919	-6.8%
	Subtotal South Dakota	3,635,275	-3.6%	755,380	-7.9%
TENNESSEE					
	Andrew Johnson NHS	49,551	-17.3%	2,374	-15.5%
	Big South Fork NRRRA	549,929	6.1%	325,154	5.5%
	Chickamauga & Chattanooga NMP ⁵	374,957	-10.5%	59,273	-11.2%
	Fort Donelson NB	226,390	3.4%	12,957	5.9%
	Great Smoky Mountains NP	5,150,710	-9.6%	3,195,420	-9.6%
	Natchez Trace Parkway	721,806	-3.2%	243,600	-3.2%
	Obed WSR	193,105	-19.6%	70,924	-18.4%
	Shiloh NMP	356,787	36.5%	51,065	30.5%
	Stones River NB	192,084	3.2%	18,055	1.2%
	Subtotal Tennessee	7,815,318	-6.4%	3,978,822	-7.9%
TEXAS					
	Alibates Flint Quarries NM	2,456	-21.6%	512	-21.5%
	Amistad NRA	1,097,650	-11.1%	691,101	-11.1%
	Big Bend NP	328,927	25.4%	705,077	11.2%
	Big Thicket NPRES ⁴	98,526	58.9%	31,973	73.5%
	Chamizal NMEM	216,320	17.9%	27,193	15.2%
	Fort Davis NHS	56,946	3.6%	6,865	-0.1%
	Guadalupe Mountains NP	222,307	11.8%	45,288	5.9%
	Lake Meredith NRA	1,248,278	-22.7%	320,264	-22.2%
	Lyndon B. Johnson NHP	101,824	-6.3%	24,807	-7.6%
	Padre Island NS	656,873	-13.5%	363,408	-11.8%
	Rio Grande WSR	1,086	19.5%	9,673	40.5%
	San Antonio Missions NHP	1,370,082	-1.7%	180,973	-2.3%
	Subtotal Texas	5,401,275	-8.1%	2,407,133	-5.5%

**Table 8: 2001 Recreation Visits/Visitor Days
by State (cont.)**

PARKS BY STATE		Recreation Visits	Percent Change	Recreation Visitor Days	Percent Change
UTAH					
	Arches NP	754,026	-4.1%	282,334	-2.0%
	Bryce Canyon NP	1,068,619	-2.8%	687,924	-4.7%
	Canyonlands NP	368,592	-8.2%	330,973	-5.9%
	Capitol Reef NP	527,760	-13.9%	82,247	-13.3%
	Cedar Breaks NM	690,652	25.4%	119,462	23.7%
	Dinosaur NM	84,857	-17.8%	42,267	-14.2%
	Glen Canyon NRA	2,152,829	-8.9%	4,195,356	-3.7%
	Golden Spike NHS	43,887	-3.1%	9,099	-1.6%
	Hovenweep NM	20,942	-13.6%	5,002	-10.6%
	Natural Bridges NM	97,171	-13.7%	47,229	-11.0%
	Rainbow Bridge NM	189,750	-4.0%	23,719	-4.0%
	Timpanogos Cave NM	126,270	9.7%	28,235	9.5%
	Zion NP	2,217,779	-8.8%	1,284,241	-4.7%
	Subtotal Utah	8,343,133	-5.7%	7,138,088	-3.9%
VERMONT					
	Marsh-Billings-Rockefeller NHP	26,350	-43.1%	4,392	-43.1%
	Subtotal Vermont	26,350	-43.1%	4,392	-43.1%
VIRGIN ISLANDS					
	Christiansted NHS	112,915	14.1%	5,041	16.2%
	Virgin Islands NP	677,401	-3.8%	347,168	-3.8%
	Subtotal Virgin Islands	790,316	-1.6%	352,209	-3.5%

**Table 8: 2001 Recreation Visits/Visitor Days
by State (cont.)**

PARKS BY STATE	Recreation Visits	Percent Change	Recreation Visitor Days	Percent Change
VIRGINIA				
Appomattox Court House NHP	190,422	-3.0%	13,144	-3.0%
Arlington House, The Robert E. Lee MEM	429,470	13.9%	17,895	13.9%
Assateague Island NS	1,271,415	4.8%	940,098	5.3%
Blue Ridge Parkway	7,588,443	4.3%	3,928,510	4.2%
Booker T. Washington NM	22,692	5.9%	3,531	-6.0%
Colonial NHP	3,282,461	4.1%	301,755	3.5%
Fredericksburg & Spotsylvania NMP	465,323	-5.0%	53,462	-5.5%
George Washington Birthplace NM	141,907	0.3%	23,651	0.3%
George Washington Memorial Parkway	7,664,091	-3.0%	647,102	-2.1%
Maggie L. Walker NHS	10,147	6.7%	423	6.6%
Manassas NBP	822,684	18.9%	51,418	18.9%
Petersburg NB	161,999	-5.3%	12,903	-5.7%
Prince William Forest Park	217,721	24.0%	197,271	8.8%
Richmond NBP	108,244	19.7%	28,248	47.3%
Shenandoah NP	1,498,561	5.6%	875,984	4.5%
Theodore Roosevelt Island	190,029	6.3%	28,504	6.3%
Wolf Trap Farm Park	539,999	3.1%	180,000	3.1%
Subtotal Virginia	24,605,608	2.4%	7,303,899	3.9%
WASHINGTON				
Fort Vancouver NHS	404,662	7.4%	43,396	4.3%
Klondike Gold Rush NHP Seattle ⁴	76,030	-39.0%	4,752	-39.0%
Lake Chelan NRA	42,548	-17.9%	44,004	-18.9%
Lake Roosevelt NRA	1,252,160	-11.5%	391,978	-17.9%
Mount Rainier NP	1,301,103	-3.3%	1,230,389	-3.0%
North Cascades NP	27,739	7.9%	31,862	-6.1%
Olympic NP	3,416,069	2.7%	1,463,962	-2.9%
Ross Lake NRA	331,343	21.1%	130,596	-5.4%
San Juan Island NHP	301,067	12.5%	21,162	5.7%
Whitman Mission NHS	64,679	-3.5%	5,390	-3.5%
Subtotal Washington	7,217,400	-0.8%	3,367,490	-5.3%

**Table 8: 2001 Recreation Visits/Visitor Days
by State (cont.)**

PARKS BY STATE		Recreation Visits	Percent Change	Recreation Visitor Days	Percent Change
WEST VIRGINIA					
	Bluestone NSR	55,763	7.8%	11,618	7.8%
	Chesapeake & Ohio Canal NHP	250,443	34.0%	41,740	34.0%
	Gauley River NRA	236,192	-6.8%	89,072	3.5%
	Harpers Ferry NHP	325,156	2.3%	108,385	2.3%
	New River Gorge NR ⁷	1,231,529	8.7%	240,595	-0.2%
	Subtotal West Virginia	2,099,083	8.1%	491,410	3.4%
WISCONSIN					
	Apostle Islands NL	185,435	2.0%	73,916	-6.5%
	Saint Croix NSR ⁷	128,952	-30.2%	113,607	10.2%
	Subtotal Wisconsin	314,387	-14.2%	187,523	3.0%
WYOMING					
	Bighorn Canyon NRA	111,038	1.4%	35,951	0.4%
	Devils Tower NM	375,596	-2.1%	90,714	2.1%
	Fort Laramie NHS	44,376	-6.2%	5,329	-4.3%
	Fossil Butte NM	19,902	-9.2%	2,708	-4.2%
	Grand Teton NP	2,535,108	-2.1%	1,490,586	-1.4%
	John D. Rockefeller, Jr., MEM Parkway	1,180,278	-2.5%	201,979	2.5%
	Yellowstone NP	1,351,678	-2.8%	2,571,238	0.5%
	Subtotal Wyoming	5,617,976	-2.4%	4,398,505	-0.1%
	NPS TOTAL	279,873,926	-2.1%	103,934,619	-1.9%

Table 9: 2002 and 2003 Forecast of Recreation Visits

PARK NAME	2001 Visits	2002 Forecast	Percent Difference	2003 Forecast	Percent Difference
Abraham Lincoln Birthplace NHS	229,675	221,831	-3.42%	213,722	-3.66%
Acadia NP	2,516,551	2,404,733	-4.44%	2,343,456	-2.55%
Adams NHS	167,500	167,500	0.00%	167,500	0.00%
Agate Fossil Beds NM	17,399	16,511	-5.10%	15,906	-3.67%
Alibates Flint Quarries NM	2,456	2,465	0.37%	2,268	-8.02%
Allegheny Portage Railroad NHS	142,340	143,002	0.46%	149,331	4.43%
Amistad NRA	1,097,650	1,181,452	7.63%	1,194,565	1.11%
Andersonville NHS	160,974	147,872	-8.14%	134,971	-8.72%
Andrew Johnson NHS	49,551	47,001	-5.15%	43,418	-7.62%
Aniakchak NM & PRES	206	206	0.00%	206	0.00%
Antietam NB	303,599	302,313	-0.42%	309,056	2.23%
Apostle Islands NL	185,435	180,743	-2.53%	175,596	-2.85%
Appomattox Court House NHP	190,422	188,120	-1.21%	184,681	-1.83%
Arches NP	754,026	743,305	-1.42%	717,332	-3.49%
Arkansas Post NMEM	43,502	41,216	-5.26%	39,036	-5.29%
Arlington House, The Robert E. Lee Mem	429,470	405,005	-5.70%	391,811	-3.26%
Assateague Island NS	1,897,634	1,861,261	-1.92%	1,859,751	-0.08%
Aztec Ruins NM	46,451	43,775	-5.76%	39,557	-9.64%
Badlands NP	955,469	1,016,995	6.44%	1,022,427	0.53%
Bandelier NM	313,850	242,582	-22.71%	212,852	-12.26%
Bent's Old Fort NHS	30,987	27,764	-10.40%	25,143	-9.44%
Bering Land Bridge NPRES	3,525	3,525	0.00%	3,525	0.00%
Big Bend NP	328,927	303,634	-7.69%	300,631	-0.99%
Big CyPRESs NPRES	409,771	448,459	9.44%	440,919	-1.68%
Big Hole NB	56,619	50,811	-10.26%	49,343	-2.89%
Big South Fork NRRRA	916,548	908,380	-0.89%	920,784	1.37%
Big Thicket NPRES	98,526	98,526	0.00%	98,526	0.00%
Bighorn Canyon NRA	241,388	254,770	5.54%	260,787	2.36%
Biscayne NP	489,343	479,415	-2.03%	497,861	3.85%
Black Canyon of the Gunnison NM	181,018	177,306	-2.05%	171,342	-3.36%
Blue Ridge Parkway	19,969,587	20,267,617	1.49%	20,599,537	1.64%
Bluestone NSR	55,763	49,369	-11.47%	46,430	-5.95%
Booker T. Washington NM	22,692	23,804	4.90%	24,729	3.89%
Boston African American NHS	390,130	402,168	3.09%	407,910	1.43%

**Table 9: 2002 and 2003 Forecast of Recreation Visits
(cont.)**

PARK NAME	2001 Visits	2002 Forecast	Percent Difference	2003 Forecast	Percent Difference
Boston NHP	1,981,301	1,923,611	-2.91%	1,753,674	-8.83%
Bryce Canyon NP	1,068,619	1,034,274	-3.21%	1,006,328	-2.70%
Buffalo National River	794,676	863,644	8.68%	914,574	5.90%
Cabrillo NM	1,034,753	1,073,701	3.76%	1,061,625	-1.12%
Canaveral NS	1,062,962	1,062,962	0.00%	1,062,962	0.00%
Canyon de Chelly NM	833,202	839,782	0.79%	838,327	-0.17%
Canyonlands NP	368,592	368,153	-0.12%	351,836	-4.43%
Cape Cod NS	4,391,478	4,463,050	1.63%	4,397,353	-1.47%
Cape Hatteras NS	2,592,889	2,645,133	2.01%	2,651,674	0.25%
Cape Krusenstern NM	4,060	4,060	0.00%	4,060	0.00%
Cape Lookout NS	625,387	648,331	3.67%	707,300	9.10%
Capitol Reef NP	527,760	548,692	3.97%	524,771	-4.36%
Capulin Volcano NM	60,542	59,566	-1.61%	57,867	-2.85%
Carl Sandburg Home NHS	34,769	32,372	-6.89%	30,778	-4.92%
Carlsbad Caverns NP	455,621	433,506	-4.85%	411,193	-5.15%
Casa Grande Ruins NM	132,630	120,356	-9.25%	112,734	-6.33%
Castillo de San Marcos NM	613,465	664,347	8.29%	679,102	2.22%
Castle Clinton NM	3,601,635	3,986,311	10.68%	3,904,636	-2.05%
Catoctin Mountain Park	532,615	522,261	-1.94%	530,499	1.58%
Cedar Breaks NM	690,652	646,085	-6.45%	659,704	2.11%
Chaco Culture NHP	68,527	58,282	-14.95%	49,041	-15.86%
Chamizal NMEM	216,320	201,156	-7.01%	205,384	2.10%
Channel Islands NP	520,428	526,110	1.09%	523,274	-0.54%
Charles Pinckney NHS	29,272	21,429	-26.79%	17,356	-19.01%
Chattahoochee River NRA	2,751,256	2,633,907	-4.27%	2,565,085	-2.61%
Chesapeake & Ohio Canal NHP	4,174,048	4,348,397	4.18%	4,909,526	12.90%
Chickamauga & Chattanooga NMP	749,913	699,469	-6.73%	629,681	-9.98%
Chickasaw NRA	1,608,792	1,511,826	-6.03%	1,496,564	-1.01%
Chiricahua NM	75,824	84,290	11.17%	84,494	0.24%
Christiansted NHS	112,915	106,369	-5.80%	106,360	-0.01%
City of Rocks NRES	68,165	67,226	-1.38%	66,993	-0.35%
Clara Barton NHS	17,382	16,599	-4.50%	17,715	6.72%
Colonial NHP	3,282,461	3,230,494	-1.58%	3,246,454	0.49%

**Table 9: 2002 and 2003 Forecast of Recreation Visits
(cont.)**

PARK NAME	2001 Visits	2002 Forecast	Percent Difference	2003 Forecast	Percent Difference
Colorado NM	237,604	232,152	-2.29%	216,016	-6.95%
Congaree Swamp NM	119,738	122,386	2.21%	132,379	8.17%
Coronado NMEM	89,107	87,000	-2.37%	86,697	-0.35%
Cowpens NB	218,361	224,981	3.03%	234,194	4.10%
Crater Lake NP	457,373	435,133	-4.86%	431,799	-0.77%
Craters of the Moon NM	185,799	191,029	2.81%	186,415	-2.42%
Cumberland Gap NHP	887,488	1,076,105	21.25%	999,267	-7.14%
Cumberland Island NS	45,193	42,390	-6.20%	41,299	-2.57%
Curecanti NRA	879,776	939,848	6.83%	927,334	-1.33%
Cuyahoga Valley NRA	3,123,353	3,068,153	-1.77%	2,973,037	-3.10%
Dayton Aviation Heritage NHP	48,489	45,673	-5.81%	48,203	5.54%
De Soto NMEM	221,282	245,961	11.15%	247,011	0.43%
Death Valley NP	1,014,636	1,053,713	3.85%	1,019,133	-3.28%
Delaware Water Gap NRA	4,867,273	4,932,119	1.33%	4,943,310	0.23%
Denali NP & PRES	360,191	368,555	2.32%	368,884	0.09%
Devils Postpile NM	155,478	159,696	2.71%	164,931	3.28%
Devils Tower NM	375,596	352,833	-6.06%	337,068	-4.47%
Dinosaur NM	326,373	344,097	5.43%	329,222	-4.32%
Dry Tortugas NP	79,186	95,135	20.14%	103,884	9.20%
Edgar Allan Poe NHS	12,552	12,552	0.00%	12,552	0.00%
Edison NHS	54,419	54,419	0.00%	54,419	0.00%
Effigy Mounds NM	79,846	81,056	1.52%	82,411	1.67%
Eisenhower NHS	74,826	75,550	0.97%	75,646	0.13%
El Malpais NM	118,374	102,996	-12.99%	103,685	0.67%
El Morro NM	68,886	65,014	-5.62%	61,538	-5.35%
Eleanor Roosevelt NHS	86,012	77,804	-9.54%	77,122	-0.88%
Eugene O'Neill NHS	3,510	3,517	0.20%	3,516	-0.03%
Everglades NP	1,049,851	1,044,738	-0.49%	1,044,519	-0.02%
Federal Hall NMEM	203,816	218,905	7.40%	217,563	-0.61%
Fire Island NS	661,692	671,670	1.51%	701,216	4.40%
Florissant Fossil Beds NM	79,669	78,511	-1.45%	77,379	-1.44%
Ford's Theatre NHS	1,224,540	1,249,775	2.06%	1,278,165	2.27%
Fort Bowie NHS	8,858	8,647	-2.38%	8,467	-2.08%

**Table 9: 2002 and 2003 Forecast of Recreation Visits
(cont.)**

PARK NAME	2001 Visits	2002 Forecast	Percent Difference	2003 Forecast	Percent Difference
Fort Caroline NMEM	195,303	221,378	13.35%	240,426	8.60%
Fort Clatsop NMEM	226,137	227,236	0.49%	230,553	1.46%
Fort Davis NHS	56,946	53,774	-5.57%	51,739	-3.78%
Fort Donelson NB	226,390	224,403	-0.88%	224,616	0.09%
Fort Frederica NM	290,705	249,004	-14.34%	236,634	-4.97%
Fort Laramie NHS	44,376	38,050	-14.26%	32,840	-13.69%
Fort Larned NHS	35,581	35,202	-1.07%	33,252	-5.54%
Fort Matanzas NM	682,480	714,357	4.67%	756,338	5.88%
Fort McHenry NM & HS	646,775	666,284	3.02%	664,017	-0.34%
Fort Necessity NB	89,133	90,222	1.22%	89,993	-0.25%
Fort Point NHS	1,203,023	1,276,521	6.11%	1,181,248	-7.46%
Fort Pulaski NM	357,953	357,428	-0.15%	357,390	-0.01%
Fort Raleigh NHS	267,464	219,624	-17.89%	190,803	-13.12%
Fort Scott NHS	40,673	34,826	-14.38%	31,891	-8.43%
Fort Smith NHS	84,974	84,974	0.00%	84,974	0.00%
Fort Stanwix NM	53,065	53,065	0.00%	53,065	0.00%
Fort Sumter NM	919,443	919,443	0.00%	919,443	0.00%
Fort Union NM	15,100	13,713	-9.18%	13,036	-4.94%
Fort Union Trading Post NHS	19,551	19,086	-2.38%	18,765	-1.68%
Fort Vancouver NHS	404,662	406,816	0.53%	416,757	2.44%
Fort Washington Park	267,032	259,569	-2.79%	258,637	-0.36%
Fossil Butte NM	19,902	19,798	-0.52%	19,101	-3.52%
Franklin Delano Roosevelt Memorial	2,866,417	2,866,417	0.00%	2,866,417	0.00%
Frederick Douglass NHS	29,618	30,310	2.34%	29,587	-2.39%
Frederick Law Olmsted NHS	10,332	10,595	2.54%	11,764	11.03%
Fredericksburg & Spotsylvania NMP	465,323	482,450	3.68%	486,563	0.85%
Friendship Hill NHS	33,791	35,863	6.13%	38,709	7.93%
Gates of the Arctic NP & PRES	4,505	4,505	0.00%	4,505	0.00%
Gateway NRA	8,285,059	8,518,972	2.82%	8,894,749	4.41%
Gauley River NRA	236,192	240,451	1.80%	240,229	-0.09%
General Grant NMEM	85,107	84,771	-0.39%	77,050	-9.11%
George Rogers Clark NHP	129,161	107,706	-16.61%	93,795	-12.92%
George Washington Birthplace NM	141,907	160,401	13.03%	173,143	7.94%

**Table 9: 2002 and 2003 Forecast of Recreation Visits
(cont.)**

PARK NAME	2001 Visits	2002 Forecast	Percent Difference	2003 Forecast	Percent Difference
George Washington Carver NM	41,464	46,340	11.76%	47,350	2.18%
George Washington Memorial Pkwy	7,664,091	8,473,045	10.56%	8,968,240	5.84%
Gettysburg NMP	1,792,380	1,672,370	-6.70%	1,669,484	-0.17%
Gila Cliff Dwellings NM	49,447	43,148	-12.74%	40,170	-6.90%
Glacier Bay NP & PRES	380,114	405,785	6.75%	410,516	1.17%
Glacier NP	1,680,614	1,679,122	-0.09%	1,663,248	-0.95%
Glen Canyon NRA	2,340,031	2,467,441	5.44%	2,461,803	-0.23%
Golden Gate NRA	13,457,900	13,892,958	3.23%	13,867,809	-0.18%
Golden Spike NHS	43,887	42,235	-3.76%	40,722	-3.58%
Grand Canyon NP	4,104,809	4,088,351	-0.40%	3,973,033	-2.82%
Grand Portage NM	81,428	91,125	11.91%	95,229	4.50%
Grand Teton NP	2,535,108	2,520,193	-0.59%	2,478,818	-1.64%
Grant-Kohrs Ranch NHS	20,188	17,361	-14.00%	15,256	-12.13%
Great Basin NP	81,712	79,576	-2.61%	77,834	-2.19%
Great Sand Dunes NM	277,523	257,843	-7.09%	249,479	-3.24%
Great Smoky Mountains NP	9,197,697	9,517,814	3.48%	9,382,980	-1.42%
Greenbelt Park	192,154	192,154	0.00%	192,154	0.00%
Guadalupe Mountains NP	222,307	205,560	-7.53%	200,710	-2.36%
Guilford Courthouse NMP	858,125	905,023	5.47%	950,768	5.05%
Gulf Islands NS	4,549,900	4,546,536	-0.07%	4,546,842	0.01%
Hagerman Fossil Beds NM	12,311	13,196	7.19%	13,320	0.94%
Haleakala NP	1,410,974	1,514,350	7.33%	1,476,156	-2.52%
Hamilton Grange NMEM	22,971	22,971	0.00%	22,971	0.00%
Hampton NHS	24,096	20,096	-16.60%	18,320	-8.84%
Harpers Ferry NHP	325,156	312,514	-3.89%	304,157	-2.67%
Harry S Truman NHS	45,112	37,755	-16.31%	33,409	-11.51%
Hawaii Volcanoes NP	1,343,286	1,264,446	-5.87%	1,182,912	-6.45%
Herbert Hoover NHS	183,640	175,702	-4.32%	166,371	-5.31%
Home of Franklin D. Roosevelt NHS	127,624	106,042	-16.91%	92,244	-13.01%
Homestead National Monument of America	52,077	56,228	7.97%	61,246	8.92%
Hopewell Culture NHP	26,761	23,984	-10.38%	21,623	-9.84%
Hopewell Furnace NHS	64,898	58,326	-10.13%	52,379	-10.20%
Horseshoe Bend NMP	108,190	121,302	12.12%	124,588	2.71%
Hot Springs NP	1,296,786	1,229,963	-5.15%	1,171,617	-4.74%

**Table 9: 2002 and 2003 Forecast of Recreation Visits
(cont.)**

PARK NAME	2001 Visits	2002 Forecast	Percent Difference	2003 Forecast	Percent Difference
Hovenweep NM	37,396	37,396	0.00%	37,396	0.00%
Hubbell Trading Post NHS	234,631	203,307	-13.35%	191,748	-5.69%
Independence NHP	2,813,047	2,891,663	2.79%	2,841,436	-1.74%
Indiana Dunes NL	1,735,404	1,843,655	6.24%	1,865,123	1.16%
Isle Royale NP	19,431	19,846	2.13%	19,172	-3.39%
James A. Garfield NHS	21,115	21,115	0.00%	21,115	0.00%
Jean Lafitte NHP & PRES	923,604	928,592	0.54%	947,102	1.99%
Jefferson National Expansion Memorial	3,532,524	3,541,640	0.26%	3,567,990	0.74%
Jewel Cave NM	125,330	125,359	0.02%	123,592	-1.41%
Jimmy Carter NHS	59,716	60,862	1.92%	64,143	5.39%
John D Rockefeller, Jr., Mem Pkwy	1,180,278	1,125,372	-4.65%	1,062,546	-5.58%
John Day Fossil Beds NM	98,489	93,686	-4.88%	90,826	-3.05%
John Fitzgerald Kennedy NHS	12,244	12,244	0.00%	12,244	0.00%
John Muir NHS	25,257	27,054	7.12%	26,048	-3.72%
Johnstown Flood NMEM	119,462	114,763	-3.93%	110,985	-3.29%
Joshua Tree NP	1,280,917	1,273,429	-0.58%	1,266,720	-0.53%
Kalaupapa NHP	63,006	66,749	5.94%	64,510	-3.35%
Kaloko-Honokohau NHP	54,000	51,379	-4.85%	52,084	1.37%
Katmai NP & PRES	67,038	87,537	30.58%	99,776	13.98%
Kenai Fjords NP	262,353	246,552	-6.02%	236,874	-3.93%
Kennesaw Mountain NBP	1,329,271	1,492,658	12.29%	1,595,603	6.90%
Kings Canyon NP	541,787	561,922	3.72%	572,213	1.83%
Kings Mountain NMP	267,402	273,143	2.15%	279,529	2.34%
Klondike Gold Rush NHP Alaska	713,436	727,710	2.00%	740,932	1.82%
Klondike Gold Rush NHP Seattle	76,030	88,790	16.78%	82,271	-7.34%
Knife River Indian Villages NHS	36,280	39,604	9.16%	42,772	8.00%
Kobuk Valley NP	4,217	4,217	0.00%	4,217	0.00%
Korean War Veterans Memorial	2,961,477	2,961,477	0.00%	2,961,477	0.00%
Lake Chelan NRA	42,548	51,670	21.44%	53,925	4.36%
Lake Clark NP & PRES	4,397	4,397	0.00%	4,397	0.00%
Lake Mead NRA	8,465,547	8,664,555	2.35%	8,648,676	-0.18%
Lake Meredith NRA	1,248,278	1,325,225	6.16%	1,236,085	-6.73%
Lake Roosevelt NRA	1,252,160	1,263,001	0.87%	1,214,089	-3.87%

**Table 9: 2002 and 2003 Forecast of Recreation Visits
(cont.)**

PARK NAME	2001 Visits	2002 Forecast	Percent Difference	2003 Forecast	Percent Difference
Lassen Volcanic NP	376,695	371,031	-1.50%	373,693	0.72%
Lava Beds NM	113,882	119,044	4.53%	119,335	0.24%
LBJ Memorial Grove of the Potomac	529,503	483,319	-8.72%	463,709	-4.06%
Lincoln Boyhood NMEM	146,037	144,773	-0.87%	142,690	-1.44%
Lincoln Home NHS	392,214	357,081	-8.96%	343,013	-3.94%
Lincoln Memorial	3,968,357	3,968,357	0.00%	3,968,357	0.00%
Little Bighorn Battlefield NM	334,567	331,679	-0.86%	323,309	-2.52%
Little Rock Central High School NHS	21,078	21,078	0.00%	21,078	0.00%
Longfellow NHS	0	0	0.00%	0	0.00%
Lowell NHP	723,568	731,660	1.12%	779,206	6.50%
Lyndon B. Johnson NHP	101,824	95,958	-5.76%	88,841	-7.42%
Maggie L. Walker NHS	10,147	10,499	3.47%	10,857	3.41%
Mammoth Cave NP	1,883,580	1,713,232	-9.04%	1,653,944	-3.46%
Manassas NBP	822,684	659,617	-19.82%	590,918	-10.41%
Manzanar NHS	46,834	46,834	0.00%	46,834	0.00%
Marsh-Billings-Rockefeller NHP	26,350	26,350	0.00%	26,350	0.00%
Martin Luther King, Jr., NHS	598,475	648,421	8.35%	691,763	6.68%
Martin Van Buren NHS	15,950	12,646	-20.71%	10,632	-15.92%
Mary McLeod Bethune Council House NHS	5,769	4,719	-18.21%	4,025	-14.71%
Mesa Verde NP	513,409	452,474	-11.87%	414,385	-8.42%
Minute Man NHP	1,072,979	1,106,371	3.11%	1,159,081	4.76%
Mojave NPRES	492,745	505,707	2.63%	535,463	5.88%
Monocacy NB	18,095	20,264	11.99%	21,786	7.51%
Montezuma Castle NM	710,595	663,532	-6.62%	609,770	-8.10%
Moore's Creek NB	88,320	107,830	22.09%	119,833	11.13%
Morristown NHP	464,758	455,361	-2.02%	433,190	-4.87%
Mount Rainier NP	1,301,103	1,309,890	0.68%	1,306,060	-0.29%
Mount Rushmore NMEM	1,904,119	1,949,937	2.41%	1,965,797	0.81%
Muir Woods NM	773,624	773,624	0.00%	773,624	0.00%
Natchez NHP	287,499	287,499	0.00%	287,499	0.00%
Natchez Trace Parkway	5,552,351	5,610,864	1.05%	5,515,447	-1.70%
National Capital Parks Central	1,860,851	1,860,851	0.00%	1,860,851	0.00%
National Capital Parks East	1,343,067	1,066,837	-20.57%	951,565	-10.81%

**Table 9: 2002 and 2003 Forecast of Recreation Visits
(cont.)**

PARK NAME	2001 Visits	2002 Forecast	Percent Difference	2003 Forecast	Percent Difference
Natural Bridges NM	97,171	90,593	-6.77%	80,334	-11.32%
Navajo NM	57,904	45,857	-20.80%	34,892	-23.91%
New Bedford Whaling NHP	303,342	303,342	0.00%	303,342	0.00%
New Orleans Jazz	45,766	45,766	0.00%	45,766	0.00%
New River Gorge NR	1,231,529	1,177,727	-4.37%	1,171,873	-0.50%
Nez Perce NHP	159,417	112,151	-29.65%	83,922	-25.17%
Nicodemus NHS	34,251	34,251	0.00%	34,251	0.00%
Ninety Six NHS	29,194	26,407	-9.55%	25,115	-4.89%
Noatak NPRES	3,912	3,912	0.00%	3,912	0.00%
North Cascades NP	27,739	25,184	-9.21%	24,587	-2.37%
Obed Wild and Scenic River	193,105	179,352	-7.12%	157,312	-12.29%
Ocmulgee NM	118,565	120,028	1.23%	119,280	-0.62%
Oklahoma City MEM	482,974	482,974	0.00%	482,974	0.00%
Olympic NP	3,416,069	3,173,185	-7.11%	3,062,129	-3.50%
Oregon Caves NM	87,175	90,133	3.39%	90,944	0.90%
Organ Pipe Cactus NM	329,028	338,117	2.76%	377,906	11.77%
Ozark National Scenic Riverways	1,488,355	1,486,523	-0.12%	1,465,770	-1.40%
Padre Island NS	656,873	689,612	4.98%	690,648	0.15%
Pea Ridge NMP	77,583	82,590	6.45%	83,352	0.92%
Pecos NHP	32,718	35,753	9.28%	36,220	1.31%
Pennsylvania Avenue NHS	225,962	257,615	14.01%	259,159	0.60%
Perry's Victory and Internatl Peace Mem	164,402	161,196	-1.95%	157,041	-2.58%
Petersburg NB	161,999	158,355	-2.25%	156,800	-0.98%
Petrified Forest NP	583,904	492,158	-15.71%	423,154	-14.02%
Petroglyph NM	60,608	48,955	-19.23%	40,998	-16.25%
Pictured Rocks NL	421,312	425,877	1.08%	424,103	-0.42%
Pinnacles NM	178,243	178,243	0.00%	178,243	0.00%
Pipe Spring NM	50,783	46,622	-8.19%	42,354	-9.15%
Pipestone NM	88,512	91,185	3.02%	91,366	0.20%
Piscataway Park	251,261	227,951	-9.28%	225,918	-0.89%
Point Reyes NS	2,222,762	2,151,044	-3.23%	2,079,280	-3.34%
PREsident's Park	1,401,108	1,130,985	-19.28%	1,030,358	-8.90%
Prince William Forest Park	217,721	217,721	0.00%	217,721	0.00%

**Table 9: 2002 and 2003 Forecast of Recreation Visits
(cont.)**

PARK NAME	2001 Visits	2002 Forecast	Percent Difference	2003 Forecast	Percent Difference
Pu'uuhonua o Honaunau NHP	402,071	378,148	-5.95%	355,688	-5.94%
Puukohola Heiau NHS	54,745	58,217	6.34%	59,539	2.27%
Rainbow Bridge NM	189,750	206,009	8.57%	208,171	1.05%
Redwood NP	388,352	384,939	-0.88%	386,119	0.31%
Richmond NBP	108,244	110,096	1.71%	117,027	6.30%
Rio Grande Wild and Scenic River	1,086	1,217	12.07%	1,381	13.48%
Rock Creek Park	2,185,813	2,166,157	-0.90%	2,205,476	1.82%
Rocky Mountain NP	3,139,685	3,252,025	3.58%	3,301,888	1.53%
Roger Williams NMEM	51,816	55,238	6.60%	55,109	-0.23%
Ross Lake NRA	331,343	293,325	-11.47%	278,009	-5.22%
Russell Cave NM	20,449	19,962	-2.38%	18,287	-8.39%
Sagamore Hill NHS	45,176	28,443	-37.04%	14,386	-49.42%
Saguaro NP	725,874	745,720	2.73%	747,916	0.29%
Saint Croix NSR	257,903	242,168	-6.10%	200,723	-17.11%
Saint Paul's Church NHS	11,756	12,559	6.83%	13,874	10.47%
Saint-Gaudens NHS	37,550	36,583	-2.57%	37,092	1.39%
Salem Maritime NHS	748,747	794,075	6.05%	805,518	1.44%
Salinas Pueblo Missions NM	34,568	32,437	-6.16%	30,547	-5.83%
San Antonio Missions NHP	1,370,082	1,394,375	1.77%	1,430,098	2.56%
San Francisco Maritime NHP	3,256,974	3,263,392	0.20%	3,198,448	-1.99%
San Juan Island NHP	301,067	313,478	4.12%	330,264	5.35%
San Juan NHS	1,281,528	1,275,921	-0.44%	1,355,004	6.20%
Santa Monica Mountains NRA	532,898	508,392	-4.60%	504,242	-0.82%
Saratoga NHP	154,897	165,210	6.66%	167,877	1.61%
Saugus Iron Works NHS	17,017	16,933	-0.49%	15,987	-5.59%
Scotts Bluff NM	113,135	107,695	-4.81%	99,779	-7.35%
Sequoia NP	870,327	800,678	-8.00%	770,722	-3.74%
Shenandoah NP	1,498,561	1,394,070	-6.97%	1,370,872	-1.66%
Shiloh NMP	356,787	316,641	-11.25%	312,177	-1.41%
Sitka NHP	211,984	211,984	0.00%	211,984	0.00%
Sleeping Bear Dunes NL	1,127,107	1,179,328	4.63%	1,162,914	-1.39%
Springfield Armory NHS	27,044	28,954	7.06%	32,037	10.65%
Statue of Liberty NM	4,317,998	4,867,836	12.73%	4,814,665	-1.09%

**Table 9: 2002 and 2003 Forecast of Recreation Visits
(cont.)**

PARK NAME	2001 Visits	2002 Forecast	Percent Difference	2003 Forecast	Percent Difference
Steamtown NHS	128,435	126,942	-1.16%	113,578	-10.53%
Stones River NB	192,084	200,310	4.28%	205,578	2.63%
Sunset Crater Volcano NM	159,523	155,578	-2.47%	149,154	-4.13%
Tallgrass Prairie NPRES	18,149	18,149	0.00%	18,149	0.00%
Thaddeus Kosciuszko NMEM	7,722	8,292	7.38%	8,708	5.01%
Theodore Roosevelt Birthplace NHS	11,198	10,185	-9.05%	6,540	-35.79%
Theodore Roosevelt Inaugural NHS	20,684	21,730	5.06%	24,125	11.03%
Theodore Roosevelt Island	190,029	214,006	12.62%	230,753	7.83%
Theodore Roosevelt NP	446,609	457,321	2.40%	466,343	1.97%
Thomas Jefferson Memorial	2,225,756	2,225,756	0.00%	2,225,756	0.00%
Thomas Stone NHS	5,241	5,241	0.00%	5,241	0.00%
Timpanogos Cave NM	126,270	126,111	-0.13%	128,414	1.83%
Timucuan Ecological & Historic PRES	707,183	707,183	0.00%	707,183	0.00%
Tonto NM	80,006	77,193	-3.52%	77,037	-0.20%
Tumacacori NHP	49,570	48,376	-2.41%	46,033	-4.84%
Tuskegee Institute NHS	37,843	47,615	25.82%	47,276	-0.71%
Tuzigoot NM	116,323	109,579	-5.80%	105,369	-3.84%
Ulysses S. Grant NHS	22,421	23,481	4.73%	25,034	6.61%
Upper Delaware SRR	306,639	301,761	-1.59%	299,839	-0.64%
USS Arizona Memorial	1,436,006	1,453,997	1.25%	1,468,882	1.02%
Valley Forge NHP	1,230,025	982,020	-20.16%	804,335	-18.09%
Vanderbilt Mansion NHS	396,656	394,114	-0.64%	399,716	1.42%
Vicksburg NMP	992,284	1,007,120	1.50%	1,019,608	1.24%
Vietnam Veterans Memorial	3,704,008	3,704,008	0.00%	3,704,008	0.00%
Virgin Islands NP	677,401	686,286	1.31%	717,973	4.62%
Voyageurs NP	243,374	241,601	-0.73%	245,134	1.46%
Walnut Canyon NM	102,839	99,552	-3.20%	93,889	-5.69%
War in the Pacific NHP	149,865	162,313	8.31%	169,567	4.47%
Washington Monument	0	600,000	100.00%	600,000	0.00%
Weir Farm NHS	17,643	20,269	14.88%	22,390	10.47%
Whiskeytown-Shasta-Trinity NRA	695,018	696,539	0.22%	691,096	-0.78%
White House	856,042	882,065	3.04%	822,618	-6.74%
White Sands NM	518,958	472,472	-8.96%	442,589	-6.32%
Whitman Mission NHS	64,679	61,414	-5.05%	57,737	-5.99%

**Table 9: 2002 and 2003 Forecast of Recreation Visits
(cont.)**

PARK NAME	2001 Visits	2002 Forecast	Percent Difference	2003 Forecast	Percent Difference
William Howard Taft NHS	8,946	8,731	-2.41%	9,112	4.37%
Wilson's Creek NB	223,531	224,741	0.54%	236,356	5.17%
Wind Cave NP	650,357	589,072	-9.42%	534,590	-9.25%
Wolf Trap Farm Park	539,999	493,543	-8.60%	472,621	-4.24%
Women's Rights NHP	23,771	23,771	0.00%	23,771	0.00%
Wrangell-St. Elias NP & PRES	28,643	27,411	-4.30%	26,820	-2.16%
Wright Brothers NMEM	438,548	428,737	-2.24%	432,446	0.87%
Wupatki NM	239,476	247,081	3.18%	250,841	1.52%
Yellowstone NP	2,758,526	2,784,325	0.94%	2,729,868	-1.96%
Yosemite NP	3,368,731	3,260,457	-3.21%	3,174,586	-2.63%
Yukon-Charley Rivers NPRES	6,571	6,571	0.00%	6,571	0.00%
Zion NP	2,217,779	2,265,112	2.13%	2,225,791	-1.74%
NPS TOTAL	279,873,926	286,126,272	2.23%	286,982,054	0.30%

Table 10: 2001 Listing of Acreage

AREA NAME	State	Region	FEDERAL LAND			NON-FEDERAL LAND			Gross Area Acres
			Fee Acres	Less Than Fee Acres	Sub-Total Acres	Other Public Acres	Private Acres	Sub-total Acres	
A Lincoln Birthpl NHS	KY	SE	116.50	0.00	116.50	0.00	0.00	0.00	116.50
Acadia NP	ME	NE	35,398.51	10,497.33	45,895.84	48.22	1,554.21	1,602.43	47,498.27
Adams NHP	MA	NE	9.17	0.00	9.17	4.00	10.65	14.65	23.82
Agate Fossil Beds NM	NE	MW	2,270.33	467.19	2,737.52	24.43	293.27	317.70	3,055.22
Alagnak Wild Rvr	AK	A	26,966.00	0.00	26,966.00	90.00	3,609.45	3,699.45	30,665.45
Alibates Flint Quarries N	TX	IM	1,079.23	0.00	1,079.23	0.00	291.74	291.74	1,370.97
Allegheny Prtge Rr NHS	PA	NE	1,224.60	0.00	1,224.60	1.25	23.35	24.60	1,249.20
Amistad NRA	TX	IM	57,292.44	0.00	57,292.44	0.00	1,207.56	1,207.56	58,500.00
Andersonville NHS	GA	SE	479.88	1.00	480.88	7.89	5.84	13.73	494.61
Andrew Johnson NHS	TN	SE	16.68	0.00	16.68	0.00	0.00	0.00	16.68
Aniakchak N Preserve	AK	A	439,863.00	0.00	439,863.00	5,147.00	20,593.00	25,740.00	465,603.00
Aniakchak Nm	AK	A	137,176.00	0.00	137,176.00	0.00	0.00	0.00	137,176.00
Antietam Nb	MD	NC	1,572.54	1,171.00	2,743.54	22.60	610.39	632.99	3,376.53
Apostle Islands NI	WI	MW	42,160.65	0.00	42,160.65	27,211.24	0.00	27,211.24	69,371.89
Appalachian NS Trail ⁽⁶⁾	ME TO GA	AT	152,613.00	13,360.06	165,973.06	49,829.44	6,848.19	56,677.63	222,650.69
Appomattox Crt Hs NHP	VA	NE	1,683.43	9.80	1,693.23	2.12	77.00	79.12	1,772.35
Arches NP	UT	IM	76,353.01	0.00	76,353.01	165.97	0.00	165.97	76,518.98
Arkansas Post NMEM	AR	MW	485.74	0.00	485.74	0.00	261.14	261.14	746.88
Arl House, R E Lee MEM	VA	NC	27.91	0.00	27.91	0.00	0.00	0.00	27.91
Assateague Island NS ⁽²⁾	MD-VA	NE	17,763.68	101.82	17,865.50	21,863.83	4.10	21,867.93	39,733.43
Aztec Ruins NM	NM	IM	257.33	0.00	257.33	6.78	53.69	60.47	317.80
Badlands NP	SD	MW	110,498.24	122,324.00	232,822.24	39.24	9,894.46	9,933.70	242,755.94
Bandelier NM	NM	IM	32,831.44	0.00	32,831.44	0.00	845.23	845.23	33,676.67
Bent's Old Fort NHS	CO	IM	735.60	0.00	735.60	7.40	55.80	63.20	798.80
Bering Land Bridge N Pres	AK	A	2,537,912.00	0.00	2,537,912.00	0.00	159,493.72	159,493.72	2,697,405.72

Table 10: 2001 Listing of Acreage

AREA NAME	State	Region	FEDERAL LAND			NON-FEDERAL LAND			Gross Area Acres
			Fee Acres	Less Than Fee Acres	Sub-Total Acres	Other Public Acres	Private Acres	Sub-total Acres	
Big Bend NP	TX	IM	775,279.14	0.00	775,279.14	2,601.11	23,282.96	25,884.07	801,163.21
Big Cypress Addition	FL 7/	SE	110,541.77	0.00	110,541.77	32,556.97	3,018.70	35,575.67	146,117.44
Big Cypress N Preserve	FL 7/	SE	535,699.51	0.00	535,699.51	37,886.57	862.15	38,748.72	574,448.23
Big Hole NB	MT	PW	655.61	0.00	655.61	0.00	0.00	0.00	655.61
Big South Fork NR & RA	KY-TN	SE	114,471.00	0.00	114,471.00	3,220.23	7,619.11	10,839.34	125,310.34
Big Thicket N Preserve	TX	IM	85,880.92	13.34	85,894.26	25.26	11,248.51	11,273.77	97,168.03
Bighorn Canyon NRA	MT-WY	IM	67,600.98	889.89	68,490.87	1,392.29	50,413.06	51,805.35	120,296.22
Biscayne NP	FL	SE	170,955.77	0.00	170,955.77	1,587.05	381.25	1,968.30	172,924.07
Black Canyon Of Gunnison	CO	IM	26,701.09	3,225.51	29,926.60	0.00	0.00	0.00	29,926.60
Blue Ridge Pkwy	NC-VA	SE	79,464.02	2,109.29	81,573.31	281.94	10,111.12	10,393.06	91,966.37
Bluestone NSR	WV	NE	3,032.00	0.00	3,032.00	1,236.00	41.51	1,277.51	4,309.51
Booker T Washington NM	VA	NE	223.92	0.00	223.92	0.00	0.00	0.00	223.92
Boston Afri-Amer NHS	MA	NE	0.00	0.00	0.00	0.06	0.53	0.59	0.59
Boston Harbor Island NRA	MA	NE	5.00	0.00	5.00	1,072.25	405.00	1,477.25	1,482.25
Boston NHP	MA	NE	37.46	0.00	37.46	5.09	0.77	5.86	43.32
Brices Cross Rds NBS	MS	SE	1.00	0.00	1.00	0.00	0.00	0.00	1.00
Brown V. Bd Of Ed. NHS	KS	MW	1.85	0.00	1.85	0.00	0.00	0.00	1.85
Bryce Canyon NP	UT	IM	35,832.58	0.00	35,832.58	0.00	2.50	2.50	35,835.08
Buck Island Reef NM	VI	SE	19,015.47	0.00	19,015.47	0.00	0.00	0.00	19,015.47
Buffalo N Rvr	AR	MW	88,584.82	3,203.60	91,788.42	2,367.91	137.73	2,505.64	94,294.06
C & O Canal NHP	MD-DC-WV	NC	13,124.43	1,308.25	14,432.68	2,895.94	2,222.71	5,118.65	19,551.33
Cabrillo NM	CA	PW	159.94	0.00	159.94	0.00	0.00	0.00	159.94
Canaveral NS	FL	SE	57,647.69	0.00	57,647.69	0.00	14.00	14.00	57,661.69
Cane River Creole NHP	LA	SE	62.91	0.00	62.91	0.00	144.47	144.47	207.38
Canyon De Chelly NM	AZ	IM	0.00	0.00	0.00	0.00	83,840.00	83,840.00	83,840.00

Table 10: 2001 Listing of Acreage

AREA NAME	State	Region	FEDERAL LAND			NON-FEDERAL LAND			Gross Area Acres
			Fee Acres	Less Than Fee Acres	Sub-Total Acres	Other Public Acres	Private Acres	Sub-total Acres	
Canyonlands NP	UT	IM	337,269.40	301.03	337,570.43	27.40	0.00	27.40	337,597.83
Cape Cod NS	MA	NE	27,122.34	346.75	27,469.09	14,556.22	1,579.63	16,135.85	43,604.94
Cape Hatteras NS	NC	SE	30,320.91	0.00	30,320.91	0.00	0.55	0.55	30,321.46
Cape Krusenstern NM	AK	A	584,276.00	10,133.54	594,409.54	438.00	54,334.64	54,772.64	649,182.18
Cape Lookout NS	NC	SE	13,930.22	11,243.40	25,173.62	3,048.16	21.58	3,069.74	28,243.36
Capitol Reef NP	UT	IM	241,233.87	0.00	241,233.87	669.97	0.42	670.39	241,904.26
Capulin Volcano NM	NM	IM	792.84	0.00	792.84	0.00	0.00	0.00	792.84
Carl Sandburg Home NHS	NC	SE	263.52	0.00	263.52	0.00	0.13	0.13	263.65
Carlsbad Caverns NP	NM	IM	46,427.26	0.00	46,427.26	0.00	339.19	339.19	46,766.45
Casa Grande Ruins NM	AZ	IM	472.50	0.00	472.50	0.00	0.00	0.00	472.50
Castillo De San Marcos NM	FL	SE	20.18	0.00	20.18	0.02	0.01	0.03	20.21
Castle Clinton NM	NY	NE	1.00	0.00	1.00	0.00	0.00	0.00	1.00
Catoctin Mt Park	MD	NC	5,793.10	15.64	5,808.74	0.00	1.13	1.13	5,809.87
Cedar Breaks NM	UT	IM	6,154.60	0.00	6,154.60	0.00	0.00	0.00	6,154.60
Chaco Culture NHP	NM	IM	32,854.24	0.00	32,854.24	0.00	1,120.05	1,120.05	33,974.29
Chamizal NMEM	TX	IM	54.90	0.00	54.90	0.00	0.00	0.00	54.90
Channel Islands NP	CA	PW	79,018.62	0.00	79,018.62	124,554.15	45,988.23	170,542.38	249,561.00
Charles Pinckney NHS	SC	SE	28.45	0.00	28.45	0.00	0.00	0.00	28.45
Chattahoochee Rvr NRA	GA	SE	4,559.58	7.28	4,566.86	2,696.67	1,847.82	4,544.49	9,111.35
Chick & Chatt NMP	GA-TN	SE	8,127.31	12.89	8,140.20	0.00	87.62	87.62	8,227.82
Chickasaw NRA	OK	IM	9,875.13	9.20	9,884.33	4.50	0.00	4.50	9,888.83
Chiricahua NM	AZ	IM	11,982.38	0.00	11,982.38	0.00	2.35	2.35	11,984.73
Christiansted NHS	VI	SE	26.24	0.00	26.24	0.91	0.00	0.91	27.15
City Of Rocks NReserve	ID	PW	9,184.47	0.00	9,184.47	640.00	4,282.72	4,922.72	14,107.19
Clara Barton NHS	MD	NC	8.59	0.00	8.59	0.00	0.00	0.00	8.59

Table 10: 2001 Listing of Acreage

AREA NAME	State	Region	FEDERAL LAND			NON-FEDERAL LAND			Gross Area Acres
			Fee Acres	Less Than Fee Acres	Sub-Total Acres	Other Public Acres	Private Acres	Sub-total Acres	
Colonial NHP	VA	NE	8,716.46	558.07	9,274.53	73.00	113.54	186.54	9,461.07
Colorado NM	CO	IM	20,533.93	0.00	20,533.93	0.00	0.00	0.00	20,533.93
Congaree Swamp NM	SC	SE	21,701.02	0.00	21,701.02	0.00	186.51	186.51	21,887.53
Constitution Gardens	DC	NC	52.00	0.00	52.00	0.00	0.00	0.00	52.00
Coronado NMEM	AZ	IM	4,748.22	0.00	4,748.22	0.00	2.00	2.00	4,750.22
Cowpens NB	SC	SE	790.90	0.00	790.90	46.63	4.03	50.66	841.56
Crater Lake NP	OR	PW	183,223.77	0.00	183,223.77	0.00	0.28	0.28	183,224.05
Craters Of The Moon NM	ID	PW	714,727.05	0.00	714,727.05	0.00	0.00	0.00	714,727.05
Cumberland Gap NHP	KY-TN-VA	SE	20,257.22	186.17	20,443.39	0.00	19.76	19.76	20,463.15
Cumberland Island NS	GA	SE	19,472.71	1.63	19,474.34	13,820.15	3,120.64	16,940.79	36,415.13
Curecanti NRA ⁽¹⁾	CO	IM	41,971.04	1.38	41,972.42	0.00	0.00	0.00	41,972.42
Cuyahoga Valley NP	OH	MW	18,084.37	1,307.77	19,392.14	8,301.31	5,165.64	13,466.95	32,859.09
Dayton Aviation Hr NHP	OH	MW	84.83	0.00	84.83	0.47	1.16	1.63	86.46
De Soto NMEM	FL	SE	24.78	0.00	24.78	0.00	2.06	2.06	26.84
Death Valley NP	CA-NV	PW	3,291,779.44	0.00	3,291,779.44	38,223.53	10,406.68	48,630.21	3,340,409.65
Del Water Gap NRA	NJ-PA	NE	55,582.39	50.88	55,633.27	7,527.45	3,581.09	11,108.54	66,741.81
Delaware NSR	NJ-PA	NE	0.00	0.00	0.00	1,973.33	0.00	1,973.33	1,973.33
Denali N Preserve	AK	A	1,303,972.00	0.00	1,303,972.00	640.00	29,505.99	30,145.99	1,334,117.99
Denali NP	AK	A	4,724,748.06	0.00	4,724,748.06	5,663.00	10,500.66	16,163.66	4,740,911.72
Devils Postpile NM	CA	PW	798.46	0.00	798.46	0.00	0.00	0.00	798.46
Devils Tower NM	WY	IM	1,346.91	0.00	1,346.91	0.00	0.00	0.00	1,346.91
Dinosaur NM	CO-UT	IM	203,031.38	2,654.16	205,685.54	50.96	4,541.05	4,592.01	210,277.55
Dry Tortugas NP	FL	SE	61,481.22	0.00	61,481.22	3,220.00	0.00	3,220.00	64,701.22
Ebey's Landing NH Res	WA	PW	294.90	1,547.30	1,842.20	68.00	17,108.44	17,176.44	19,018.64
Edgar Allan Poe NHS	PA	NE	0.52	0.00	0.52	0.00	0.00	0.00	0.52

Table 10: 2001 Listing of Acreage

AREA NAME	State	Region	FEDERAL LAND			NON-FEDERAL LAND			Gross Area Acres
			Fee Acres	Less Than Fee Acres	Sub-Total Acres	Other Public Acres	Private Acres	Sub-total Acres	
Edison NHS	NJ	NE	21.25	0.00	21.25	0.00	0.00	0.00	21.25
Effigy Mounds NM	IA	MW	2,526.39	0.00	2,526.39	0.00	0.00	0.00	2,526.39
Eisenhower NHS	PA	NE	687.37	3.09	690.46	0.00	0.00	0.00	690.46
El Malpais NM	NM	IM	109,606.50	0.00	109,606.50	402.37	4,268.08	4,670.45	114,276.95
El Morro NM	NM	IM	1,039.92	0.00	1,039.92	0.00	238.80	238.80	1,278.72
Eleanor Roosevelt NHS	NY	NE	180.50	0.00	180.50	0.00	0.00	0.00	180.50
Eugene O'neill NHS	CA	PW	13.19	0.00	13.19	0.00	0.00	0.00	13.19
Everglades Expansion ⁽⁸⁾	FL	SE	104,860.74	0.00	104,860.74	2,417.57	2,174.69	4,592.26	109,453.00
Everglades NP ⁽⁸⁾	FL	SE	1,398,617.13	0.00	1,398,617.13	0.00	285.82	285.82	1,398,902.95
Fdr Memorial	DC	NC	7.50	0.00	7.50	0.00	0.00	0.00	7.50
Federal Hall NMEM	NY	NE	0.45	0.00	0.45	0.00	0.00	0.00	0.45
Fire Island NS	NY	NE	3,089.62	3,151.51	6,241.13	12,422.73	915.61	13,338.34	19,579.47
First Ladies NHS	OH	MW	0.33	0.00	0.33	0.00	0.00	0.00	0.33
Florissant Fossil Beds NM	CO	IM	5,992.32	0.00	5,992.32	5.77	0.00	5.77	5,998.09
Ford's Theatre NHS	DC	NC	0.29	0.00	0.29	0.00	0.00	0.00	0.29
Fossil Butte NM	WY	IM	8,198.00	0.00	8,198.00	0.00	0.00	0.00	8,198.00
Fred-Spots Mem NMP	VA	NE	6,708.34	85.69	6,794.03	13.20	1,555.11	1,568.31	8,362.34
Frederick Douglass NHS	DC	NC	8.08	0.00	8.08	0.00	0.45	0.45	8.53
Frederick Law Olmsted NHS	MA	NE	7.06	0.15	7.21	0.00	0.00	0.00	7.21
Friendship Hill NHS	PA	NE	661.44	0.00	661.44	0.00	13.12	13.12	674.56
Ft Bowie NHS	AZ	IM	999.45	0.00	999.45	0.00	0.00	0.00	999.45
Ft Caroline NMEM	FL	SE	133.15	0.00	133.15	0.00	5.24	5.24	138.39
Ft Clatsop NMEM	OR	PW	125.20	0.00	125.20	0.00	0.00	0.00	125.20
Ft Davis NHS	TX	IM	473.87	0.00	473.87	0.00	0.00	0.00	473.87
Ft Donelson NB	TN	SE	539.89	0.00	539.89	0.00	11.80	11.80	551.69

Table 10: 2001 Listing of Acreage

AREA NAME	State	Region	FEDERAL LAND			NON-FEDERAL LAND			Gross Area Acres
			Fee Acres	Less Than Fee Acres	Sub-Total Acres	Other Public Acres	Private Acres	Sub-total Acres	
Ft Frederica NM	GA	SE	220.48	18.71	239.19	0.00	2.23	2.23	241.42
Ft Laramie NHS	WY	IM	831.11	0.00	831.11	0.41	1.33	1.74	832.85
Ft Larned NHS	KS	MW	410.46	269.20	679.66	38.73	0.00	38.73	718.39
Ft Matanzas NM	FL	SE	298.51	0.00	298.51	0.00	1.60	1.60	300.11
Ft Mchenry NM & HSHRIN	MD	NE	43.26	0.00	43.26	0.00	0.00	0.00	43.26
Ft Necessity NB	PA	NE	894.47	0.00	894.47	8.33	0.00	8.33	902.80
Ft Point NHS	CA	PW	29.00	0.00	29.00	0.00	0.00	0.00	29.00
Ft Pulaski NM	GA	SE	5,365.13	0.00	5,365.13	257.97	0.00	257.97	5,623.10
Ft Raleigh NHS	NC	SE	355.45	0.00	355.45	18.09	139.39	157.48	512.93
Ft Scott NHS	KS	MW	16.69	0.00	16.69	0.00	0.00	0.00	16.69
Ft Smith NHS	AR-OK	MW	36.43	0.41	36.84	0.54	37.67	38.21	75.05
Ft Stanwix NM	NY	NE	15.52	0.00	15.52	0.00	0.00	0.00	15.52
Ft Sumter NM	SC	SE	168.32	30.00	198.32	0.00	1.25	1.25	199.57
Ft Union NM	NM	IM	720.60	0.00	720.60	0.00	0.00	0.00	720.60
Ft Union Trading Post NHS	ND-MT	MW	296.03	121.19	417.22	5.40	21.19	26.59	443.81
Ft Vancouver NHS	WA	PW	201.73	0.00	201.73	7.16	0.00	7.16	208.89
Ft Washington Park	MD	NC	341.00	0.00	341.00	0.00	0.00	0.00	341.00
G W Birthplace NM	VA	NE	550.23	0.00	550.23	0.00	0.00	0.00	550.23
G W Memorial Pkwy	MD-VA	NC	7,079.57	89.43	7,169.00	4.08	159.94	164.02	7,333.02
Gates Of Arctic N Pres	AK	A	948,200.00	0.00	948,200.00	0.00	428.90	428.90	948,628.90
Gates Of The Arctic NP	AK	A	7,263,774.39	2,328.00	7,266,102.39	1,235.00	256,560.38	257,795.38	7,523,897.77
Gateway NRA	NJ-NY	NE	20,442.77	1.63	20,444.40	5,560.04	602.19	6,162.23	26,606.63
Gauley River NRA	WV	NE	4,020.25	0.00	4,020.25	989.83	6,487.62	7,477.45	11,497.70
General Grant NMEM	NY	NE	0.76	0.00	0.76	0.00	0.00	0.00	0.76
George R Clark NHP	IN	MW	26.17	0.00	26.17	0.00	0.00	0.00	26.17

Table 10: 2001 Listing of Acreage

AREA NAME	State	Region	FEDERAL LAND			NON-FEDERAL LAND			Gross Area Acres
			Fee Acres	Less Than Fee Acres	Sub-Total Acres	Other Public Acres	Private Acres	Sub-total Acres	
George Wash. Carver NM	MO	MW	210.00	0.00	210.00	0.00	0.00	0.00	210.00
Gettysburg NMP	PA	NE	4,256.71	486.41	4,743.12	43.20	1,204.59	1,247.79	5,990.91
Gila Cliff Dwellings NM	NM	IM	533.13	0.00	533.13	0.00	0.00	0.00	533.13
Glacier Bay N Preserve	AK	A	58,406.00	0.00	58,406.00	0.00	0.00	0.00	58,406.00
Glacier Bay NP	AK	A	3,222,698.34	0.00	3,222,698.34	0.00	2,141.97	2,141.97	3,224,840.31
Glacier NP	MT	IM	1,013,083.91	70.28	1,013,154.19	2.51	415.72	418.23	1,013,572.42
Glen Canyon NRA	AZ-UT	IM	1,239,953.41	0.00	1,239,953.41	14,352.78	0.00	14,352.78	1,254,306.19
Golden Gate NRA	CA	PW	30,930.15	19.07	30,949.22	40,863.72	3,002.91	43,866.63	74,815.85
Golden Spike NHS	UT	IM	2,203.20	0.00	2,203.20	1.42	530.66	532.08	2,735.28
Governors Island NM	NY	NE	20.00	0.00	20.00	0.00	0.00	0.00	20.00
Grand Canyon NP	AZ	IM	1,180,862.78	0.00	1,180,862.78	11,860.00	24,680.54	36,540.54	1,217,403.32
Grand Portage NM	MN	MW	709.97	0.00	709.97	0.00	0.00	0.00	709.97
Grand Teton NP	WY	IM	306,539.79	1,114.34	307,654.13	1,379.66	961.14	2,340.80	309,994.93
Grant-Kohrs Ranch NHS	MT	IM	1,325.83	165.63	1,491.46	69.47	57.45	126.92	1,618.38
Great Basin NP	NV	PW	77,180.00	0.00	77,180.00	0.00	0.00	0.00	77,180.00
Great Egg Harbor N. River	NJ	NE	0.00	0.00	0.00	43,311.42	0.00	43,311.42	43,311.42
Great Sand Dunes N Pres	CO	IM	41,676.00	0.00	41,676.00	0.00	10.00	10.00	41,686.00
Great Sand Dunes NM	CO	IM	40,076.16	0.00	40,076.16	0.00	2,196.02	2,196.02	42,272.18
Great Smoky Mts NP	TN-NC	SE	521,224.47	0.00	521,224.47	0.00	265.71	265.71	521,490.18
Greenbelt Park	MD	NC	1,175.42	0.00	1,175.42	0.00	0.57	0.57	1,175.99
Guadalupe Mts NP	TX	IM	86,189.97	0.00	86,189.97	0.00	226.00	226.00	86,415.97
Guilford Courths NMP	NC	SE	220.69	0.00	220.69	0.00	0.00	0.00	220.69
Gulf Islands NS	FL-MS	SE	99,081.55	2.09	99,083.64	37,655.56	718.69	38,374.25	137,457.89
Hagerman Fossil Beds	ID	PW	3,841.78	0.00	3,841.78	492.87	16.50	509.37	4,351.15
Haleakala NP	HI	PW	28,968.52	0.00	28,968.52	289.32	572.31	861.63	29,830.15

Table 10: 2001 Listing of Acreage

AREA NAME	State	Region	FEDERAL LAND			NON-FEDERAL LAND			Gross Area Acres
			Fee Acres	Less Than Fee Acres	Sub-Total Acres	Other Public Acres	Private Acres	Sub-total Acres	
Hamilton Grange NMEM	NY	NE	0.11	0.00	0.11	0.93	0.00	0.93	1.04
Hampton NHS	MD	NE	62.04	0.00	62.04	0.00	0.00	0.00	62.04
Harpers Ferry NHP	MD-VA-WV	NC	2,194.39	52.50	2,246.89	61.07	194.58	255.65	2,502.54
Harry S Truman NHS	MO	MW	6.67	0.00	6.67	0.00	0.00	0.00	6.67
Hawaii Volcanoes NP ⁽³⁾	HI	PW	207,643.38	0.00	207,643.38	0.00	2,052.00	2,052.00	209,695.38
Herbert Hoover NHS	IA	MW	181.11	0.00	181.11	4.59	1.10	5.69	186.80
Hohokam Pima NM	AZ	IM	0.00	0.00	0.00	0.00	1,690.00	1,690.00	1,690.00
Home Of F D R NHS	NY	NE	290.34	0.00	290.34	0.00	509.64	509.64	799.98
Homestead Nm Of Americ	NE	MW	165.13	24.07	189.20	5.91	0.00	5.91	195.11
Hopewell Culture NHP	OH	MW	921.31	8.05	929.36	0.00	235.60	235.60	1,164.96
Hopewell Furnace NHS	PA	NE	848.06	0.00	848.06	0.00	0.00	0.00	848.06
Horseshoe Bend NMP	AL	SE	2,040.00	0.00	2,040.00	0.00	0.00	0.00	2,040.00
Hot Springs NP	AR	MW	4,897.78	0.00	4,897.78	336.73	315.27	652.00	5,549.78
Hovenweep NM	CO-UT	IM	784.93	0.00	784.93	0.00	0.00	0.00	784.93
Hubbell T P NHS	AZ	IM	160.09	0.00	160.09	0.00	0.00	0.00	160.09
Independence NHP	PA	NE	34.22	0.22	34.44	4.95	5.52	10.47	44.91
Indiana Dunes NL	IN	MW	10,100.04	492.13	10,592.17	3,440.54	1,030.11	4,470.65	15,062.82
Isle Royale NP	MI	MW	539,281.87	0.00	539,281.87	32,508.24	0.00	32,508.24	571,790.11
J F Kennedy NHS	MA	NE	0.09	0.00	0.09	0.00	0.00	0.00	0.09
James A Garfield NHS	OH	MW	7.82	0.00	7.82	0.00	0.00	0.00	7.82
Jdrockefeller Mem Pkwy	WY	IM	23,777.22	0.00	23,777.22	0.00	0.00	0.00	23,777.22
Jean Lafitte NHP &Pres	LA	SE	11,664.92	0.40	11,665.32	2,109.25	6,260.52	8,369.77	20,035.09
Jefferson N Expan MEM	MO-IL	MW	85.46	5.50	90.96	6.87	95.00	101.87	192.83
Jewel Cave NM	SD	MW	1,273.51	0.00	1,273.51	0.00	0.00	0.00	1,273.51
Jimmy Carter NHS	GA	SE	36.11	9.51	45.62	1.92	23.32	25.24	70.86

Table 10: 2001 Listing of Acreage

AREA NAME	State	Region	FEDERAL LAND			NON-FEDERAL LAND			Gross Area Acres
			Fee Acres	Less Than Fee Acres	Sub-Total Acres	Other Public Acres	Private Acres	Sub-total Acres	
John Day Fos Beds NM	OR	PW	12,051.68	1,403.05	13,454.73	134.68	467.32	602.00	14,056.73
John Muir NHS	CA	PW	335.99	0.00	335.99	6.93	1.81	8.74	344.73
Johnstown Flood NMEM	PA	NE	154.13	1.24	155.37	5.55	3.20	8.75	164.12
Joshua Tree NP	CA	PW	963,055.23	0.00	963,055.23	36,045.20	19,021.19	55,066.39	1,018,121.62
Kalaupapa NHP	HI	PW	22.88	0.00	22.88	10,684.00	72.00	10,756.00	10,778.88
Kaloko-Honokohau NHP	HI	PW	615.90	0.00	615.90	518.83	26.18	545.01	1,160.91
Katmai N Preserve	AK	A	405,432.00	0.00	405,432.00	512.00	12,755.22	13,267.22	418,699.22
Katmai NP	AK	A	3,611,588.19	20.43	3,611,608.62	50,172.00	12,749.06	62,921.06	3,674,529.68
Kenai Fjords NP	AK	A	595,771.07	6,068.13	601,839.20	19,302.00	48,841.79	68,143.79	669,982.99
Kennesaw Mt NBP	GA	SE	2,879.60	0.00	2,879.60	4.54	0.00	4.54	2,884.14
Keweenaw NHP	MI	MW	110.52	0.00	110.52	0.00	1,758.88	1,758.88	1,869.40
Kings Canyon NP	CA	PW	461,845.42	0.00	461,845.42	0.00	55.78	55.78	461,901.20
Kings Mt NMP	SC	SE	3,945.29	0.00	3,945.29	0.00	0.00	0.00	3,945.29
Klondike Gold Rush NHP	AK-WA	A	2,418.93	0.00	2,418.93	10,199.64	572.78	10,772.42	13,191.35
Knife River Indian Vii NH	ND	MW	1,457.24	136.41	1,593.65	0.00	164.70	164.70	1,758.35
Kobuk Valley NP	AK	A	1,669,808.00	5.00	1,669,813.00	896.00	80,027.86	80,923.86	1,750,736.86
Koren War Veterans MEM	DC	NC	2.20	0.00	2.20	0.00	0.00	0.00	2.20
Lake Chelan NRA	WA	PW	59,330.51	17.43	59,347.94	2,209.03	400.95	2,609.98	61,957.92
Lake Clark N Preserve	AK	A	1,200,119.38	9,239.00	1,209,358.38	13,384.00	187,549.61	200,933.61	1,410,291.99
Lake Clark NP	AK	A	2,226,629.97	0.00	2,226,629.97	0.00	393,103.24	393,103.24	2,619,733.21
Lake Mead NRA ⁽⁴⁾	AZ-NV	PW	1,470,286.53	41.31	1,470,327.84	2,482.08	22,855.77	25,337.85	1,495,665.69
Lake Meredith NRA	TX	IM	44,977.63	0.00	44,977.63	0.00	0.00	0.00	44,977.63
Lake Roosevelt NRA ⁽¹⁾	WA	PW	100,390.31	0.00	100,390.31	0.00	0.00	0.00	100,390.31
Lassen Volcanic NP	CA	PW	106,368.14	0.00	106,368.14	0.00	4.22	4.22	106,372.36
Lava Beds NM	CA	PW	46,559.87	0.00	46,559.87	0.00	0.00	0.00	46,559.87

Table 10: 2001 Listing of Acreage

AREA NAME	State	Region	FEDERAL LAND			NON-FEDERAL LAND			Gross Area Acres
			Fee Acres	Less Than Fee Acres	Sub-Total Acres	Other Public Acres	Private Acres	Sub-total Acres	
Lbj Mem Grove Of The Potomac	DC	NC	17.00	0.00	17.00	0.00	0.00	0.00	17.00
Lincoln Boyhood NMEM	IN	MW	180.81	0.00	180.81	10.94	7.90	18.84	199.65
Lincoln Home NHS	IL	MW	12.03	0.00	12.03	0.00	0.21	0.21	12.24
Lincoln Memorial	DC	NC	107.43	0.00	107.43	0.00	0.00	0.00	107.43
Little Bighorn Battlefld	MT	IM	765.34	0.00	765.34	0.00	0.00	0.00	765.34
Little River Canyon	AL	SE	10,338.15	0.00	10,338.15	3,294.81	0.00	3,294.81	13,632.96
Little Rock Central HS NH	AR	MW	0.00	0.00	0.00	0.00	27.56	27.56	27.56
Longfellow NHS	MA	NE	1.98	0.00	1.98	0.00	0.00	0.00	1.98
Lowell NHP	MA	NE	9.24	19.76	29.00	4.57	107.77	112.34	141.34
Lower St Croix NSR	MN-WI	MW	4,790.43	3,489.58	8,280.01	4,624.64	12,374.28	16,998.92	25,278.93
Lyndon B Johnson NHP	TX	IM	672.22	1.93	674.15	0.11	895.89	896.00	1,570.15
M Mcleod Bethune House NHS	DC	NC	0.07	0.00	0.07	0.00	0.00	0.00	0.07
Maggie L Walker NHS	VA	NE	0.36	0.00	0.36	0.00	0.93	0.93	1.29
Mammoth Cave NP	KY	SE	52,003.24	0.00	52,003.24	814.75	12.20	826.95	52,830.19
Manassas NBP	VA	NC	4,338.37	53.66	4,392.03	0.00	675.20	675.20	5,067.23
Manzanar NHS	CA	PW	813.81	0.00	813.81	0.00	0.00	0.00	813.81
Marsh-Billings-Rockefeller	VT	NE	555.07	0.00	555.07	0.00	88.00	88.00	643.07
Martin L King, Jr, NHS	GA	SE	13.34	0.00	13.34	10.22	15.17	25.39	38.73
Martin Van Buren NHS	NY	NE	21.07	18.24	39.31	0.24	0.00	0.24	39.55
Mesa Verde NP	CO	IM	51,890.65	0.00	51,890.65	40.41	190.87	231.28	52,121.93
Minidoka Internment NM	ID	PW	72.75	0.00	72.75	0.00	0.00	0.00	72.75
Minute Man NHP	MA	NE	784.75	7.47	792.22	69.21	103.60	172.81	965.03
Minuteman Missile NHS	SD	MW	15.00	0.00	15.00	0.00	0.00	0.00	15.00
Mississippi N Rvr & RA	MN	MW	62.42	0.00	62.42	0.00	53,712.58	53,712.58	53,775.00

Table 10: 2001 Listing of Acreage

AREA NAME	State	Region	FEDERAL LAND			NON-FEDERAL LAND			Gross Area Acres
			Fee Acres	Less Than Fee Acres	Sub-Total Acres	Other Public Acres	Private Acres	Sub-total Acres	
Missouri N Rec River	SD-NE	MW	0.00	0.00	0.00	0.00	45,350.00	45,350.00	45,350.00
Mojave Desert N Preser	CA	PW	1,375,730.28	0.00	1,375,730.28	39,777.55	79,157.68	118,935.23	1,494,665.51
Monocacy NB	MD	NC	1,354.87	195.37	1,550.24	51.82	44.95	96.77	1,647.01
Montezuma Castle NM	AZ	IM	840.86	0.00	840.86	0.00	16.83	16.83	857.69
Moores Creek NB	NC	SE	85.35	2.40	87.75	0.00	0.00	0.00	87.75
Morristown NHP	NJ	NE	1,695.82	0.95	1,696.77	0.00	9.34	9.34	1,706.11
Mt Rainier NP	WA	PW	235,625.00	0.00	235,625.00	0.00	0.00	0.00	235,625.00
Mt Rushmore NMEM	SD	MW	1,238.45	0.00	1,238.45	40.00	0.00	40.00	1,278.45
Muir Woods NM	CA	PW	522.98	0.00	522.98	30.57	0.00	30.57	553.55
Natchez NHP	MS	SE	82.36	0.00	82.36	5.42	20.48	25.90	108.26
Natchez Trace NS Trail	MS-TN	SE	0.00	0.00	0.00	0.00	10,995.00	10,995.00	10,995.00
Natchez Trace Pkwy	TN TO MS	SE	45,763.60	5,917.04	51,680.64	243.22	58.04	301.26	51,981.90
National Capital Parks	DC-MD-VA	NC	6,464.25	13.90	6,478.15	60.00	99.52	159.52	6,637.67
National Mall	DC	NC	146.35	0.00	146.35	0.00	0.00	0.00	146.35
Natural Bridges NM	UT	IM	7,620.49	16.00	7,636.49	0.00	0.00	0.00	7,636.49
Navajo NM	AZ	IM	360.00	0.00	360.00	0.00	0.00	0.00	360.00
New Bedford Whaling	MA	NE	0.24	0.00	0.24	0.00	33.76	33.76	34.00
New Orleans Jazz NHP	LA	SE	0.00	0.00	0.00	5.13	0.00	5.13	5.13
New River Gorge N Rvr	WV	NE	43,912.01	485.40	44,397.41	4,679.74	20,998.20	25,677.94	70,075.35
Nez Perce NHP	ID	PW	1,412.55	445.02	1,857.57	261.20	14.88	276.08	2,133.65
Nicodemus NHS	KS	MW	0.17	0.00	0.17	0.00	161.18	161.18	161.35
Ninety Six NHS	SC	SE	989.14	0.00	989.14	0.00	0.00	0.00	989.14
Niobrara N. Scenic River	NE	MW	0.00	0.00	0.00	0.00	5,962.00	5,962.00	5,962.00
Noatak N Preserve	AK	A	6,276,254.98	0.00	6,276,254.98	1,197.00	292,452.45	293,649.45	6,569,904.43
North Cascades NP	WA	PW	504,633.52	0.00	504,633.52	0.00	147.42	147.42	504,780.94

Table 10: 2001 Listing of Acreage

AREA NAME	State	Region	FEDERAL LAND			NON-FEDERAL LAND			Gross Area Acres
			Fee Acres	Less Than Fee Acres	Sub-Total Acres	Other Public Acres	Private Acres	Sub-total Acres	
NP Of American Samoa	SAMOA	PW	0.00	0.00	0.00	4,500.00	4,500.00	9,000.00	9,000.00
Obed Wild & Scenic Rvr	TN	SE	2,397.94	1,081.12	3,479.06	326.40	1,368.23	1,694.63	5,173.69
Ocmulgee NM	GA	SE	701.54	0.00	701.54	0.00	0.00	0.00	701.54
Oklahoma City NMEM	OK	IM	3.12	0.00	3.12	0.00	3.12	3.12	6.24
Olympic NP	WA	PW	913,452.38	64.88	913,517.26	8,749.47	384.21	9,133.68	922,650.94
Oregon Caves NM	OR	PW	484.03	0.00	484.03	0.00	3.95	3.95	487.98
Organ Pipe Cactus NM	AZ	IM	329,340.51	24.42	329,364.93	1,280.00	43.57	1,323.57	330,688.50
Ozark NS Riverways	MO	MW	52,094.73	9,241.69	61,336.42	14,062.59	5,401.03	19,463.62	80,800.04
Padre Island NS	TX	IM	130,355.46	0.00	130,355.46	78.81	0.00	78.81	130,434.27
Palo Alto Btlfld NHS	TX	IM	1,314.77	0.00	1,314.77	0.00	2,042.65	2,042.65	3,357.42
Pea Ridge NMP	AR	MW	4,278.75	0.00	4,278.75	21.60	0.00	21.60	4,300.35
Pecos NHP	NM	IM	6,264.81	0.00	6,264.81	24.48	377.50	401.98	6,666.79
Pennsylvania Ave NHS	DC	NC	0.00	0.00	0.00	0.00	0.00	0.00	0.00
Perry's Vic & Int Peace M	OH	MW	24.84	0.02	24.86	0.00	0.53	0.53	25.39
Petersburg NB	VA	NE	2,657.97	0.12	2,658.09	0.00	1.10	1.10	2,659.19
Petrified Forest NP	AZ	IM	93,532.57	0.00	93,532.57	0.00	0.00	0.00	93,532.57
Petroglyph NM	NM	IM	2,919.91	0.00	2,919.91	2,924.81	1,386.91	4,311.72	7,231.63
Pictured Rocks NL	MI	MW	35,704.56	21.30	35,725.86	13,939.75	23,562.76	37,502.51	73,228.37
Pinnacles NM	CA	PW	16,254.31	0.31	16,254.62	0.00	10.82	10.82	16,265.44
Pipe Spring NM	AZ	IM	40.00	0.00	40.00	0.00	0.00	0.00	40.00
Pipestone NM	MN	MW	281.78	0.00	281.78	0.00	0.00	0.00	281.78
Piscataway Park	MD	NC	1,693.32	2,897.40	4,590.72	0.00	35.80	35.80	4,626.52
Point Reyes NS	CA	PW	65,040.66	42.98	65,083.64	2,696.98	3,287.08	5,984.06	71,067.70
Potomac Heritage NST	PA TO VA	NC	0.00	0.00	0.00	0.00	0.00	0.00	0.00
Poverty Point NM	LA	SE	0.00	0.00	0.00	415.14	495.71	910.85	910.85

Table 10: 2001 Listing of Acreage

AREA NAME	State	Region	FEDERAL LAND			NON-FEDERAL LAND			Gross Area Acres
			Fee Acres	Less Than Fee Acres	Sub-Total Acres	Other Public Acres	Private Acres	Sub-total Acres	
Prince Wm Forest Park	VA	NC	17,445.68	8.26	17,453.94	9.10	1,265.97	1,275.07	18,729.01
Pu'uhonua O Honaunau	HI	PW	180.78	1.02	181.80	0.00	0.00	0.00	181.80
Puukohola Heiau NHS	HI	PW	60.95	0.00	60.95	25.29	0.00	25.29	86.24
Rainbow Bridge NM	UT	IM	160.00	0.00	160.00	0.00	0.00	0.00	160.00
Redwood NP	CA	PW	77,700.57	28.06	77,728.63	34,661.81	222.54	34,884.35	112,612.98
Richmond NBP	VA	NE	772.32	18.11	790.43	0.00	927.65	927.65	1,718.08
Rio Grande Wild & Sr	TX	IM	0.00	0.00	0.00	2,150.00	7,450.00	9,600.00	9,600.00
Rock Creek Park	DC	NC	1,754.70	0.00	1,754.70	0.00	0.00	0.00	1,754.70
Rocky Mt NP	CO	IM	264,176.72	1,224.76	265,401.48	117.04	250.62	367.66	265,769.14
Roger Williams NMEM	RI	NE	4.56	0.00	4.56	0.00	0.00	0.00	4.56
Rosie The Riveter NHP	CA	PW	0.00	0.00	0.00	145.19	0.00	145.19	145.19
Ross Lake NRA	WA	PW	115,959.59	0.00	115,959.59	1,609.37	5.63	1,615.00	117,574.59
Russell Cave NM	AL	SE	310.45	0.00	310.45	0.00	0.00	0.00	310.45
Sagamore Hill NHS	NY	NE	83.02	0.00	83.02	0.00	0.00	0.00	83.02
Saguaro NP	AZ	IM	87,357.13	13.64	87,370.77	2,998.71	1,075.98	4,074.69	91,445.46
Saint Croix NSR	MN-WI	MW	21,042.22	10,763.02	31,805.24	30,726.49	4,946.45	35,672.94	67,478.18
Saint-Gaudens NHS	NH	NE	147.70	0.00	147.70	0.00	0.45	0.45	148.15
Salem Maritime NHS	MA	NE	8.93	0.00	8.93	0.00	0.09	0.09	9.02
Salinas Pueblo MSNS NM	NM	IM	979.87	5.26	985.13	5.68	80.61	86.29	1,071.42
Salt Rvr Bay NHP	VI	SE	196.57	0.00	196.57	657.92	93.26	751.18	947.75
San Antonio Missions NHP	TX	IM	370.23	69.68	439.91	179.09	197.34	376.43	816.34
San Fran Maritime NHP	CA	PW	28.15	0.00	28.15	21.47	0.24	21.71	49.86
San Juan Island NHP	WA	PW	1,725.45	0.00	1,725.45	26.54	0.00	26.54	1,751.99
San Juan NHS	PR	SE	53.20	0.00	53.20	21.93	0.00	21.93	75.13
Sand Creek Massacre NHS	CO	IM	0.00	0.00	0.00	640.00	11,943.34	12,583.34	12,583.34

Table 10: 2001 Listing of Acreage

AREA NAME	State	Region	FEDERAL LAND			NON-FEDERAL LAND			Gross Area Acres
			Fee Acres	Less Than Fee Acres	Sub-Total Acres	Other Public Acres	Private Acres	Sub-total Acres	
Santa Monica Mts NRA	CA	PW	21,783.14	36.07	21,819.21	46,407.46	85,405.42	131,812.88	153,632.09
Saratoga NHP	NY	NE	2,884.13	0.75	2,884.88	93.28	414.26	507.54	3,392.42
Saugus Iron Works NHS	MA	NE	8.51	0.00	8.51	0.00	0.00	0.00	8.51
Scotts Bluff NM	NE	MW	2,949.72	0.27	2,949.99	5.95	47.36	53.31	3,003.30
Sequoia NP	CA	PW	402,319.16	15.36	402,334.52	4.46	171.07	175.53	402,510.05
Shenandoah NP	VA	NE	196,282.57	777.36	197,059.93	70.88	1,885.80	1,956.68	199,016.61
Shiloh NMP	TN	SE	3,929.18	0.00	3,929.18	57.88	28.12	86.00	4,015.18
Sitka NHP	AK	A	62.98	49.53	112.51	0.60	0.06	0.66	113.17
Sleeping Bear Dunes NL	MI	MW	56,193.75	755.02	56,948.77	12,066.85	2,160.55	14,227.40	71,176.17
Springfield Armory NHS	MA	NE	20.32	0.28	20.60	34.33	0.00	34.33	54.93
St Croix Island HIS	ME	NE	28.44	0.00	28.44	0.00	16.46	16.46	44.90
St Paul's Church NHS	NY	NE	6.13	0.00	6.13	0.00	0.00	0.00	6.13
Statue Of Liberty NM	NY-NJ	NE	58.38	0.00	58.38	0.00	0.00	0.00	58.38
Steamtown NHS	PA	NE	51.29	0.00	51.29	10.55	0.64	11.19	62.48
Stones River NB	TN	SE	592.23	0.00	592.23	13.80	107.60	121.40	713.63
Sunset Crater Volc NM	AZ	IM	3,040.00	0.00	3,040.00	0.00	0.00	0.00	3,040.00
T Kosciuszko NMEM	PA	NE	0.02	0.00	0.02	0.00	0.00	0.00	0.02
T Roosevelt Birthplace NH	NY	NE	0.11	0.00	0.11	0.00	0.00	0.00	0.11
T Roosevelt Inaug NHS	NY	NE	1.03	0.00	1.03	0.00	0.00	0.00	1.03
T Roosevelt Island	DC	NC	88.50	0.00	88.50	0.00	0.00	0.00	88.50
T Roosevelt NP	ND	MW	69,702.12	0.00	69,702.12	54.33	690.44	744.77	70,446.89
Tallgrass Prairie NPRE	KS	MW	0.00	0.00	0.00	0.00	10,894.00	10,894.00	10,894.00
Thomas Jefferson MEM	DC	NC	18.36	0.00	18.36	0.00	0.00	0.00	18.36
Thomas Stone NHS	MD	NE	321.97	0.00	321.97	0.00	6.28	6.28	328.25
Timpanogos Cave NM	UT	IM	250.00	0.00	250.00	0.00	0.00	0.00	250.00

Table 10: 2001 Listing of Acreage

AREA NAME	State	Region	FEDERAL LAND			NON-FEDERAL LAND			Gross Area Acres
			Fee Acres	Less Than Fee Acres	Sub-Total Acres	Other Public Acres	Private Acres	Sub-total Acres	
Timucuan Eco & H Res	FL	SE	8,143.50	1,330.00	9,473.50	15,808.50	21,006.82	36,815.32	46,288.82
Tonto NM	AZ	IM	1,120.00	0.00	1,120.00	0.00	0.00	0.00	1,120.00
Tumacacori NHP	AZ	IM	45.64	0.00	45.64	0.64	0.00	0.64	46.28
Tupelo NB	MS	SE	1.00	0.00	1.00	0.00	0.00	0.00	1.00
Tuskegee Airmen NHS	AL	SE	44.71	0.00	44.71	1.86	43.12	44.98	89.69
Tuskegee Institute NHS	AL	SE	7.90	1.02	8.92	0.00	49.00	49.00	57.92
Tuzigoot NM	AZ	IM	42.67	15.11	57.78	0.00	742.84	742.84	800.62
Ulysses S Grant NHS	MO	MW	9.60	0.00	9.60	0.00	0.00	0.00	9.60
Upper Del Scenic & R Rvr	NY-PA	NE	27.52	0.28	27.80	1,251.76	73,720.72	74,972.48	75,000.28
Uss Arizona MEM	HI	PW	10.50	0.00	10.50	0.00	0.00	0.00	10.50
Valley Forge NHP	PA	NE	2,969.01	36.17	3,005.18	172.34	286.73	459.07	3,464.25
Vanderbilt Mansion NHS	NY	NE	211.65	0.00	211.65	0.00	0.00	0.00	211.65
Vicksburg NMP	MS	SE	1,727.47	3.34	1,730.81	4.84	2.00	6.84	1,737.65
Vietnam Veterans MEM	DC	NC	2.00	0.00	2.00	0.00	0.00	0.00	2.00
Virgin Islands Coral Reef	VI	SE	0.00	0.00	0.00	13,892.78	0.00	13,892.78	13,892.78
Virgin Islands NP	VI	SE	12,909.86	3.00	12,912.86	134.07	1,641.94	1,776.01	14,688.87
Voyageurs NP	MN	MW	133,074.30	0.00	133,074.30	83,935.05	1,190.82	85,125.87	218,200.17
Walnut Canyon NM	AZ	IM	3,288.62	0.00	3,288.62	0.00	290.84	290.84	3,579.46
War In The Pacific NHP	GUAM	PW	957.52	0.00	957.52	871.67	207.79	1,079.46	2,036.98
Washington Monument	DC	NC	106.01	0.00	106.01	0.00	0.00	0.00	106.01
Washita Battlefield NHS	OK	IM	312.20	0.00	312.20	3.00	0.00	3.00	315.20
Weir Farms NHS	CT	NE	68.05	0.00	68.05	0.00	6.25	6.25	74.30
Whiskeytown-S-T NRA ⁶⁾	CA	PW	42,459.30	0.00	42,459.30	28.93	15.23	44.16	42,503.46
White House	DC	NC	18.07	0.00	18.07	0.00	0.00	0.00	18.07
White Sands NM	NM	IM	143,732.92	0.00	143,732.92	0.00	0.00	0.00	143,732.92

Table 10: 2001 Listing of Acreage

AREA NAME	State	Region	FEDERAL LAND			NON-FEDERAL LAND			Gross Area Acres
			Fee Acres	Less Than Fee Acres	Sub-Total Acres	Other Public Acres	Private Acres	Sub-total Acres	
Whitman Mission NHS	WA	PW	98.15	0.00	98.15	0.00	0.00	0.00	98.15
William H Taft NHS	OH	MW	1.70	0.00	1.70	1.07	0.33	1.40	3.10
Wilson's Creek NB	MO	MW	1,749.91	0.00	1,749.91	0.00	0.00	0.00	1,749.91
Wind Cave NP	SD	MW	28,292.08	2.95	28,295.03	0.00	0.00	0.00	28,295.03
Wolf Trap Farm Pk	VA	NC	117.89	12.39	130.28	0.00	0.00	0.00	130.28
Women's Rights NHP	NY	NE	7.03	0.09	7.12	0.10	0.22	0.32	7.44
Wrangell-St Elias N Pres	AK	A	4,002,116.66	0.00	4,002,116.66	57,886.86	792,749.58	850,636.44	4,852,753.10
Wrangell-St Elias NP	AK	A	7,662,585.06	0.00	7,662,585.06	17,585.84	642,976.69	660,562.53	8,323,147.59
Wright Brothers NMEM	NC	SE	421.81	0.00	421.81	6.63	0.00	6.63	428.44
Wupatki NM	AZ	IM	35,401.73	20.40	35,422.13	0.00	0.00	0.00	35,422.13
Yellowstone NP	ID-MT-WY	IM	2,219,789.13	0.00	2,219,789.13	0.00	1.58	1.58	2,219,790.71
Yosemite NP	CA	PW	759,519.34	10.92	759,530.26	1,502.70	233.32	1,736.02	761,266.28
Yucca House NM	CO	IM	33.97	0.00	33.97	0.00	0.00	0.00	33.97
Yukon-Charley Rivers N Pr	AK	A	2,183,133.00	0.00	2,183,133.00	4,704.00	338,675.31	343,379.31	2,526,512.31
Zion NP	UT	IM	143,045.07	0.00	143,045.07	0.00	3,547.24	3,547.24	146,592.31
NPS TOTAL			78,691,554.46	251,783.46	78,943,337.92	1,211,440.76	4,271,417.34	5,482,858.10	84,426,196.02

- (1) Curecanti NRA, and Lake Roosevelt NRA are administered under cooperative agreement with other federal agencies
- (2) Assateague Island NS Federal Land includes 9,448.00 acres administered by U.S. Fish and Wildlife Service.
- (3) Hawaii volcanoes NP Federal Land includes 9,654.67 acres under the custody and administration of the NPS with their inclusion in the park.
- (4) Lake Mead NRA Federal Land includes 220,000 acres in the Hualapai Indian Reservation.
- (5) WhiskeyTwn-S-T NRA Shasta and Trinity portion administered by the Forest Service. Only National Park Service acreage shown.
- (6) Appalachian NS Trail – Management of Trail handled by the Washington office.
- (7) For total acreage of Big Cypress National Reserve – Add the acreage for Big Cypress National Preserve and Big Cypress Addition.
- (8) For total acreage of Everglades National Park – Add the acreage for Everglades National Park and Everglades Expansion.

Table 11: 2001 Summary of Acreage by Type of Area

TYPE OF AREA	FEDERAL LAND			NON-FEDERAL LAND			Gross Area Acres
	Fee Acres	Less Than Fee Acres	Sub-Total Acres	Other Public Acres	Private Acres	Sub-total Acres	
International Historic Site	28.44	0.00	28.44	0.00	16.46	16.46	44.90
National Battlefield Parks	7,990.29	71.77	8,062.06	4.54	1,602.85	1,607.39	9,669.45
National Battlefield Site	1.00	0.00	1.00	0.00	0.00	0.00	1.00
National Battlefields	10,894.74	1,368.89	12,263.63	143.18	779.87	923.05	13,186.68
National Historic Sites	19,745.61	726.13	20,471.74	920.66	15,884.68	16,805.34	37,277.08
National Historical Parks	115,743.94	2,755.83	118,499.77	29,097.32	15,687.29	44,784.61	163,284.38
National Lakeshores	144,159.00	1,268.45	145,427.45	56,658.38	26,753.42	83,411.80	228,839.25
National Memorials	8,073.92	6.76	8,080.68	70.92	380.19	451.11	8,531.79
National Military Parks	35,233.74	588.33	35,822.07	140.72	2,877.44	3,018.16	38,840.23
National Monuments	2,551,396.08	14,812.49	2,566,208.57	20,374.69	156,389.73	176,764.42	2,742,972.99
National Parks	49,713,063.91	149,402.75	49,862,466.66	496,714.70	1,611,092.05	2,107,806.75	51,970,273.41
National Preserves	21,523,419.15	10,582.34	21,534,001.49	212,820.52	1,960,403.50	2,173,224.02	23,707,225.51
National Recreation Areas	3,387,420.15	1,074.14	3,388,494.29	127,196.40	176,230.25	303,426.65	3,691,920.94
National Reserves	9,479.37	1,547.30	11,026.67	708.00	21,391.16	22,099.16	33,125.83
National Rivers	299,124.98	12,930.69	312,055.67	24,330.47	87,868.65	112,199.12	424,254.79
National Scenic Trails	152,613.00	13,360.06	165,973.06	49,829.44	17,843.19	67,672.63	233,645.69
National Seashores	463,824.84	14,890.18	478,715.02	106,142.44	9,661.88	115,804.32	594,519.34
National Wild & Scenic Rvrs	58,256.11	15,334.00	73,590.11	85,690.04	154,822.64	240,512.68	314,102.79
Parks (Other)	35,001.78	2,947.59	37,949.37	69.10	1,400.52	1,469.62	39,418.99
Parkways	156,084.41	8,115.76	164,200.17	529.24	10,331.57	10,860.81	175,060.98
TOTAL NPS	78,691,554.46	251,783.46	78,943,337.92	1,211,440.76	4,271,417.34	5,482,858.10	84,426,196.02

ENDNOTES

Endnotes are defined with fixed numeric identifiers, which are meaningful to Park Service administration. An endnote is not identified if there are no areas that fit the identification for 2001.

¹Redesignated areas:

²Areas reporting for the first time:

- Little Rock Central High School NHS

³Combined areas reporting separately:

- Data for the following areas *Klondike Gold Rush NHP - Alaska* and *Klondike Gold Rush NHP - Seattle* are reported separately but is classified as *Klondike Gold Rush NHP*
- Data for the following areas *National Capital Parks Central*, *National Capital Parks East* and *President's Park* are reported separately but is classified as *National Capital Parks Combined*
- The following area is combined with *National Capital Parks Central*; breakdown is not available: *Constitution Gardens*

⁴Changes in counting procedures (Data for the following areas require special adjustments to be comparable with earlier data):

- Big Thicket NPRES (fixed visitation is used at multiple locations)
- Cumberland Gap NHP (persons-per-vehicle multiplier updated)
- Grand Canyon NP (multiplier for river backcountry use updated)
- Kaloko-Honokohau NHP (sampling periods increased)
- Klondike Gold Rush NHP Seattle (hand counting visitors)
- Lake Roosevelt NRA (nonrecreation visitors reduced)
- San Juan NHS (after hours use)

⁵Opening of additional areas, programs, or facilities (Data for the following areas require special adjustments to be comparable with earlier data):

- Allegheny Portage Railroad NHS (Staple Bend Tunnel)
- Chickamauga & Chattanooga NMP (Battlefield Bypass completed)
- El Malpais NM (opened new multi-agency visitor center)
- Fort Sumter NM (opened Liberty Square)

ENDNOTES (continued)

⁶**Partial or temporary closing** (Data for the following areas require special adjustments to be comparable with earlier data):

- ❑ Boston NHP (partial closings after September 11th)
- ❑ Castle Clinton NM (partial closings after September 11th)
- ❑ Federal Hall NMEM (partial closings after September 11th)
- ❑ General Grant NMEM (partial closings after September 11th)
- ❑ Hamilton Grange NMEM (partial closings after September 11th)
- ❑ Independence NHP (partial closings after September 11th)
- ❑ Longfellow NHS (closed)
- ❑ Pennsylvania Avenue NHS (partial closings after September 11th)
- ❑ President's Park (partial closings after September 11th)
- ❑ Redwood NP (closed Freshwater Spit NPS campground)
- ❑ Statue of Liberty (closed After September 11th)
- ❑ Washington Monument (closed all year)
- ❑ White House (closed after September 11th)

⁷**Special events such as anniversaries, civic fairs, significant natural disasters, storm damage, etc.** (Data for the following areas require special adjustments to be comparable with earlier data):

- ❑ Fort McHenry NM & HS (damage to main access bridge)
- ❑ New River Gorge NR (flash floods)
- ❑ Saint Croix NSR (floods)

⁸**New areas which are not reporting:**

- ❑ Governor's Island NM
- ❑ Minidoka Internment NM
- ❑ Virgin Islands Coral Reef NM
- ❑ World War II MEM

DEFINITIONS

AFFILIATED AREA - An area administrated in connection with the National Park Service (NPS), which use NPS assistance but are neither federally owned nor directly administered by the NPS.

BACKCOUNTRY - One or more primitive or wilderness area in a park reached primarily by hiking, boating, or horseback.

BUSES - Vehicles carrying 10 or more passengers including commercial tour buses and school buses.

CAMPGROUND - An area of land designated and developed for use as a camp.

CATEGORY - NPS areas are categorized by their proximity to population centers in the following manner:

- ❑ Mixed Area Park - A park located in a mixture of Outlying Area, Rural Area, Suburban Area, and Urban area.
- ❑ Outlying Area Park - A park located in a Metropolitan Statistical Area (MSA) with a population of less than one million people.
- ❑ Remote Area Park - A park located outside of any MSA and requiring special travel arrangements to reach.
- ❑ Rural Area Park - A park located outside of any MSA and accessible by paved highway, scheduled air or marine transportation service.
- ❑ Suburban Area Park - A park located outside the central city but still within a MSA with a population of greater than one million people.
- ❑ Urban Area Park - A park located within the central city of a MSA.

CLASSIFICATION - Designated names for areas administered by the NPS may be found in the publication, The National Parks: Index 1999-2001.

CONCESSIONER - A private company or an individual granted the privilege of providing facilities and services considered necessary by the NPS for accommodating visitors.

CONCESSIONER CAMPGROUND - An element of a concessionaire operation involving services for overnight camping or equipment for camping.

CONCESSIONER LODGING - An element of a concessionaire operation involving facilities for overnight lodging such as hotels, motels, cabins, cottages, trailer villages, and trailer rental.

DEFINITIONS (continued)

MISCELLANEOUS OVERNIGHT STAY - Any overnight stay not otherwise defined (sleeping aboard boats, camping in organized groups, and/or any other overnight stays not included in other categories of overnight stays, except inholders which are non-reportable).

MIXED AREA PARK - See CATEGORY.

NATIONAL PARK SERVICE (NPS) - A Department of Interior (DOI) agency which administers approximately two dozen types of federal land, nationally significant for their scenic, natural, scientific, historical, or archeological interest (see CLASSIFICATION). The agency was established as a Bureau of the DOI by an Act of Congress, August 25, 1916. The NPS does not administer National Forests (United States Department of Agriculture/Forest Service), Wildlife Refuges (United States Department of Interior/Fish and Wildlife Service), or a variety of other lands available for public use.

NEGLIGIBLE TRANSIT - A brief, incidental entry into a park by passing traffic (vehicular or pedestrian) using NPS administered grounds, roads, or walkways (See NONREPORTABLE VISITS).

NONRECREATION OVERNIGHT STAY - A reportable non-recreation overnight stay includes leaseholders, line shacks for ranchers, and government personnel (other than NPS employees).

NONRECREATION VISIT. A reportable non-recreation visit includes through traffic, persons going to and from inholdings, trades-people with business in the park, and government personnel (other than NPS employees) with business in the park.

NONREPORTABLE VISIT - The entry into a park by NPS employees, their families, concessionaire employees, members of cooperating associations, NPS contractors, and service personnel.

NOT REPORTING - These areas do not report recreation visits to the NPS.

OUTLYING AREA PARK - See CATEGORY.

OVERNIGHT STAY - One night within a park by a visitor.

DEFINITIONS (continued)

RECREATION VEHICLE - Any enclosed vehicle used for camping which is more elaborate than a simple truck or car, such as pickup truck with camper body, pop-up tent trailer, travel trailer, bus, motor coach, mobile home, etc.

RECREATION VISIT - The entry of a person onto lands or waters administered by the NPS for recreational purposes excluding government personnel, through traffic (commuters), trades-person, and a person residing within park boundaries.

REGION - A NPS administrative subdivision. The seven NPS regions include the following states:

- ❑ Alaska (AK) - Alaska
- ❑ Intermountain (IM) - Arizona, Colorado, Montana, New Mexico, Texas, Utah, Wyoming
- ❑ Midwest (MW) - Arkansas, Illinois, Indiana, Iowa, Kansas, Michigan, Minnesota, Missouri, Nebraska, North Dakota, Ohio, Oklahoma, South Dakota, Wisconsin
- ❑ National Capital (NC) - Washington, DC, with some units in Maryland, Virginia, West Virginia
- ❑ Northeast (NE) - Connecticut, Delaware, Maryland, Massachusetts, Maine, New Hampshire, New Jersey, New York, Pennsylvania, Rhode Island, Vermont, Virginia, West Virginia (excluding units assigned to National Capital Region in Maryland, Virginia and West Virginia)
- ❑ Pacific West (PW) - California, Guam, Hawaii, Idaho, Nevada, Oregon, Washington
- ❑ Southeast (SE) - Alabama, Florida, Georgia, Kentucky, Louisiana, Mississippi, North Carolina, Puerto Rico, South Carolina, Tennessee, Virgin Islands

REMOTE AREA PARK - See CATEGORY.

RURAL AREA PARK - See CATEGORY.

SERVICE PERSONNEL – Non-reportable visits include visits by employees of the NPS who are assigned to the park or are visiting the park in connection with their duty assignments, NPS contractors, concessionaires, cooperating associations, and the temporary or permanent members in the households of NPS employees resident in the park.

SUBURBAN AREA PARK - See CATEGORY.

URBAN AREA PARK - See CATEGORY.

DEFINITIONS (continued)

VISIT - The entry of any person, except NPS and service personnel, onto lands or waters administered by the NPS. A visit may occur as a recreation visit or a non-recreation visit. A same day reentry, negligible transit, and an entry to a detached portion of the same park on the same day are considered to be a single visit. Such adjustments are made insofar as practicable for noncontiguous parts of the same park. However, visits are reported separately for two contiguous parks.

VISITOR DAY - Twelve visitor hours in a park.

VISITOR HOUR - The presence of one or more persons, excluding NPS personnel, in a park for continuous, intermittent, or simultaneous periods of time aggregating one hour (e.g., one person for one hour, two persons for one-half hour).

ABBREVIATIONS

BM	Battlefield Memorial
CAMPGDS	Campgrounds
CNTY	County
HS	Historic Shrine, Historic Site
Internatl	International
LBJ	Lyndon Baines Johnson
MEM	Memorial
MISC	Miscellaneous
MTNS	Mountains
NB	National Battlefield
NBP	National Battlefield Park
NBS	National Battlefield Site
NHC	National Heritage Corridor
NHP	National Historical Park
NHR	National Historical Reserve
NHS	National Historic Site
NL	National Lakeshore
NM	National Monument
Nmem	National Memorial
NMP	National Military Park
NON-REC	Non-Recreation
NP	National Park
NPres	National Preserve
NPS	National Park Service
NR	National River
NRA	National Recreation Area
NRes	National Reserve
NRRA	National River & Recreation Area
NS	National Seashore
NSR	National Scenic River
NST	National Scenic Trail
ONS	Overnight Stays
PKWY	Parkway
Pres	Preserve
RA	Recreation Area
RECR	Recreation
RV'S	Recreational Vehicle
SRR	Scenic & Recreational River