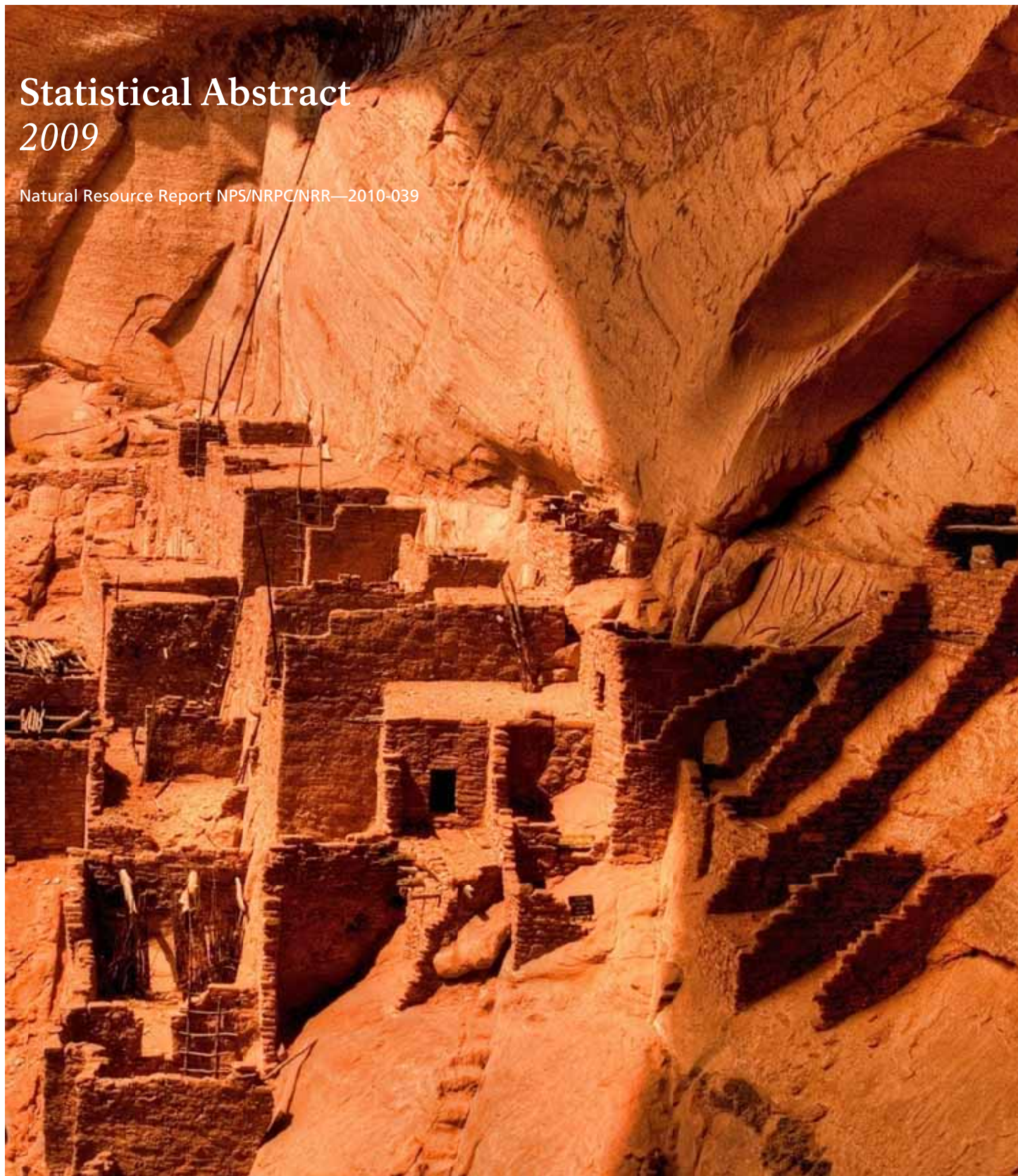




Statistical Abstract 2009

Natural Resource Report NPS/NRPC/NRR—2010-039



On the cover

Navajo National Monument

©Russell Greenberg www.greenbergfotoworks.com

Statistical Abstract 2009

Natural Resource Report NPS/NRPC/NRR—2010/039

Butch Street

National Park Service
Social Science Division
Public Use Statistics Office
WASO-TNT
P.O. Box 25287
Denver, Colorado 80225-0287

March 2010

Updated April 2010

U.S. Department of the Interior
National Park Service
Natural Resource Program Center

Fort Collins, Colorado

The National Park Service, Natural Resource Program Center publishes a range of reports that address natural resource topics of interest and applicability to a broad audience in the National Park Service and others in natural resource management, including scientists, conservation and environmental constituencies, and the public.

The Natural Resource Report Series is used to disseminate high-priority, current natural resource management information with managerial application. The series targets a general, diverse audience, and may contain NPS policy considerations or address sensitive issues of management applicability.

All manuscripts in the series receive the appropriate level of peer review to ensure that the information is scientifically credible, technically accurate, appropriately written for the intended audience, and designed and published in a professional manner. This report received informal peer review by subject-matter experts who were not directly involved in the collection, analysis, or reporting of the data. Data in this report were collected and analyzed using methods based on established, peer-reviewed protocols and were analyzed and interpreted within the guidelines of the protocols.

This report is available from the Public Use Statistics Office, Social Science Division, Natural Resource Program Center (<http://www.nature.nps.gov/stats/park.cfm>, select “Annual Abstracts”) and the Natural Resource Publications Management Web site (<http://www.nature.nps.gov/publications/NRPM>).

Please cite this publication as:

Street, B.. 2010. Statistical abstract: 2009. Natural Resource Data Series NPS/NRPC/SSD/NRDS—2010/039. National Park Service, Fort Collins, Colorado.

Contents

Introduction 1

Tables

Table 1. 2009 Recreation visits by type of unit	3
Table 2. 2009 Recreation visits by state	5
Table 3. 2009 Recreation visits/visitor days by region	7
Table 4. 2009 Recreation visits/visitor days by population center	7
Table 5. 2009 Recreation & non-recreation visits/visitor days by park	9
Table 6. 2009 Overnight stays by park	19
Table 7. 2009 Affiliated and non-reporting areas	24
Table 8. 2009 Recreation visits/visitor days by state	25
Table 9. 2010 and 2011 forecast of recreation visits	40
Table 10. 2009 Listing of acreage	50
Table 11. 2009 Summary of acreage	60

Figures

Figure 1. Percentage of recreation visits by type of unit, 2009	4
Figure 2. Percentage of change in recreation visits by state, 2009	6
Figure 3. Recreation visits by population center, 1990–2009	8
Figure 4. Average number of visitors per day to NPS units, 2009	18
Figure 5. Overnight stays by category and year, 1979–2009	23

Endnotes 61

Definitions 63

Abbreviations 66

Introduction

National Park Service professionals are dedicated to their fundamental mission as protectors of our resources for future generations, archivists of the nation's history, and providers of educational and leisure time opportunities. Timely, reliable, and useful information is fundamental to effective management and planning.

The Social Science Program's Public Use Statistics Office acknowledges the conscientious efforts of field staff of the many units of the NPS. Without the effort of park staff to count, record, and report the public use summarized here, a statistical report of this quality would not be possible. A program of collecting and analyzing monthly public use is combined with continuous auditing of park counting procedures to ensure consistency and accuracy of data. The endnotes at the end of this report describe conditions at parks that may require important adjustments for certain applications of these data.

The National Park Service cares for special places saved by the American people so that all may experience our heritage. National parks help define who we are as a nation and where we have come as a people. Parks show us natural and historical wonders that grace our lives and provide us with cherished memories.

Comments or requests for additional public use information should be addressed to:

National Resource Program Center
Public Use Statistics Office
Social Science Division
P.O. Box 25287
Denver, Colorado
80225-0287

Telephone: (303) 343-2704
Web Page: www.nature.nps.gov/stats

Table 1. 2009 Recreation Visits by Type of Unit

Units Administered by Type	Percent Total Visits	Recreation Visits	Units Reporting Visits	Units Administered
International Historic Site	0%	0	0	1
National Battlefield	1%	1,666,230	10	11
National Battlefield Park	1%	2,085,245	3	3
National Battlefield Site	0%	0	0	1
National Historic Site	10%	28,432,210	74	77
National Historical Park	3%	9,975,007	43	45
National Lakeshore	1%	3,728,821	4	4
National Memorial	11%	30,559,258	27	27
National Military Park	2%	4,608,786	9	9
National Monument	8%	22,646,428	69	74
National Park	22%	62,950,968	58	58
National Parkway	10%	29,948,911	4	4
National Preserve	1%	2,859,676	18	18
National Recreation Area	18%	50,945,414	17	18
National Reserve	0%	96,649	1	2
National River	2%	4,662,369	4	5
National Scenic Trail	0%	0	0	3
National Seashore	6%	17,920,507	10	10
National Wild & Scenic River	0%	1,336,792	7	10
Park (Other)	4%	11,156,670	9	11
NPS TOTAL	100%	285,579,941	367	391

Figure 1. Percentage of Recreation Visits by Type of Unit, 2009

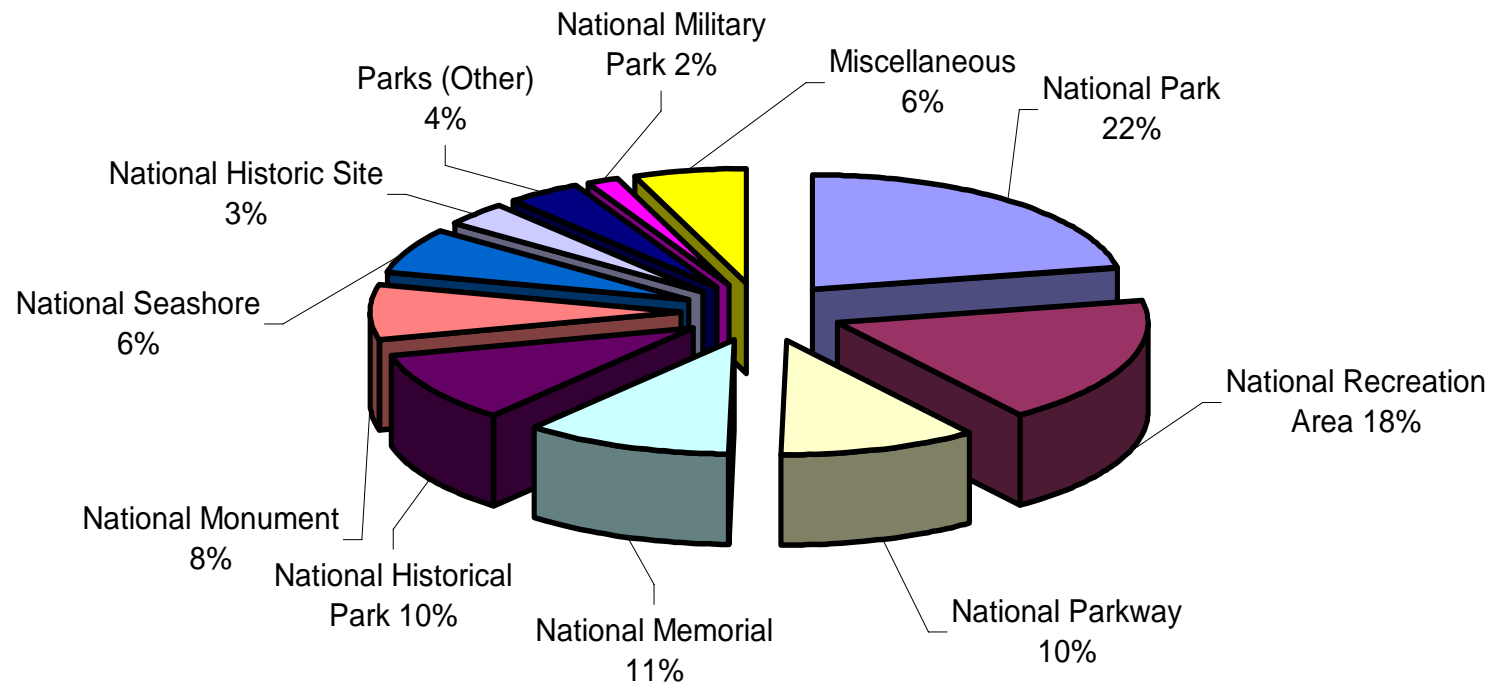


Table 2. 2009 Recreation Visits by State

State	Recreation Visits 2009	Recreation Visits 2008	Percent Change	State	Recreation Visits 2009	Recreation Visits 2008	Percent Change
Alabama	790,752	789,451	0.2%	Montana	4,195,484	3,822,075	9.8%
Alaska	2,278,488	2,403,877	-5.2%	Nebraska	273,444	265,858	2.9%
American Samoa	3,242	3,683	-12.0%	Nevada	5,836,491	5,770,632	1.1%
Arizona	10,713,122	10,681,127	0.3%	New Hampshire	34,558	29,819	15.9%
Arkansas	3,031,842	2,873,026	5.5%	New Jersey	5,828,477	5,811,657	0.3%
California	35,318,711	34,374,981	2.7%	New Mexico	1,659,574	1,556,586	6.6%
Colorado	5,443,039	5,383,786	1.1%	New York	17,327,234	16,913,720	2.4%
Connecticut	19,386	18,522	4.7%	North Carolina	18,198,530	17,984,028	1.2%
District of Columbia	35,695,833	33,165,410	7.6%	North Dakota	631,459	553,135	14.2%
Florida	9,495,437	7,937,737	19.6%	Ohio	2,882,593	3,121,019	-7.6%
Georgia	6,475,874	6,425,910	0.8%	Oklahoma	1,249,011	1,245,188	0.3%
Guam	271,608	187,005	45.2%	Oregon	891,783	832,095	7.2%
Hawaii	4,312,818	4,536,505	-4.9%	Pennsylvania	8,885,894	9,189,257	-3.3%
Idaho	494,196	543,485	-9.1%	Puerto Rico	1,069,673	1,135,577	-5.8%
Illinois	464,074	335,473	38.3%	Rhode Island	50,397	46,154	9.2%
Indiana	2,230,024	2,094,407	6.5%	South Carolina	1,504,680	1,441,433	4.4%
Iowa	241,063	211,352	14.1%	South Dakota	4,134,663	3,501,677	18.1%
Kansas	101,906	86,264	18.1%	Tennessee	8,061,848	7,733,827	4.2%
Kentucky	1,828,340	1,708,529	7.0%	Texas	6,938,238	5,804,179	19.5%
Louisiana	443,314	431,134	2.8%	Utah	8,755,401	8,451,252	3.6%
Maine	2,227,698	2,075,857	7.3%	Vermont	31,129	37,121	-16.1%
Maryland	3,445,530	3,544,992	-2.8%	Virgin Islands	580,471	622,379	-6.7%
Massachusetts	9,772,738	10,281,657	-4.9%	Virginia	22,953,894	22,542,952	1.8%
Michigan	1,628,704	1,420,947	14.6%	Washington	7,559,552	7,140,553	5.9%
Minnesota	650,156	640,843	1.5%	West Virginia	1,803,552	1,812,908	-0.5%
Mississippi	6,582,890	5,898,917	11.6%	Wisconsin	452,365	424,669	6.5%
Missouri	3,933,043	3,436,201	14.5%	Wyoming	5,895,719	5,572,123	5.8%
NPS Total					285,579,941	274,852,949	3.9%

Figure 2: Percentage Change of Recreation Visits by State, 2009

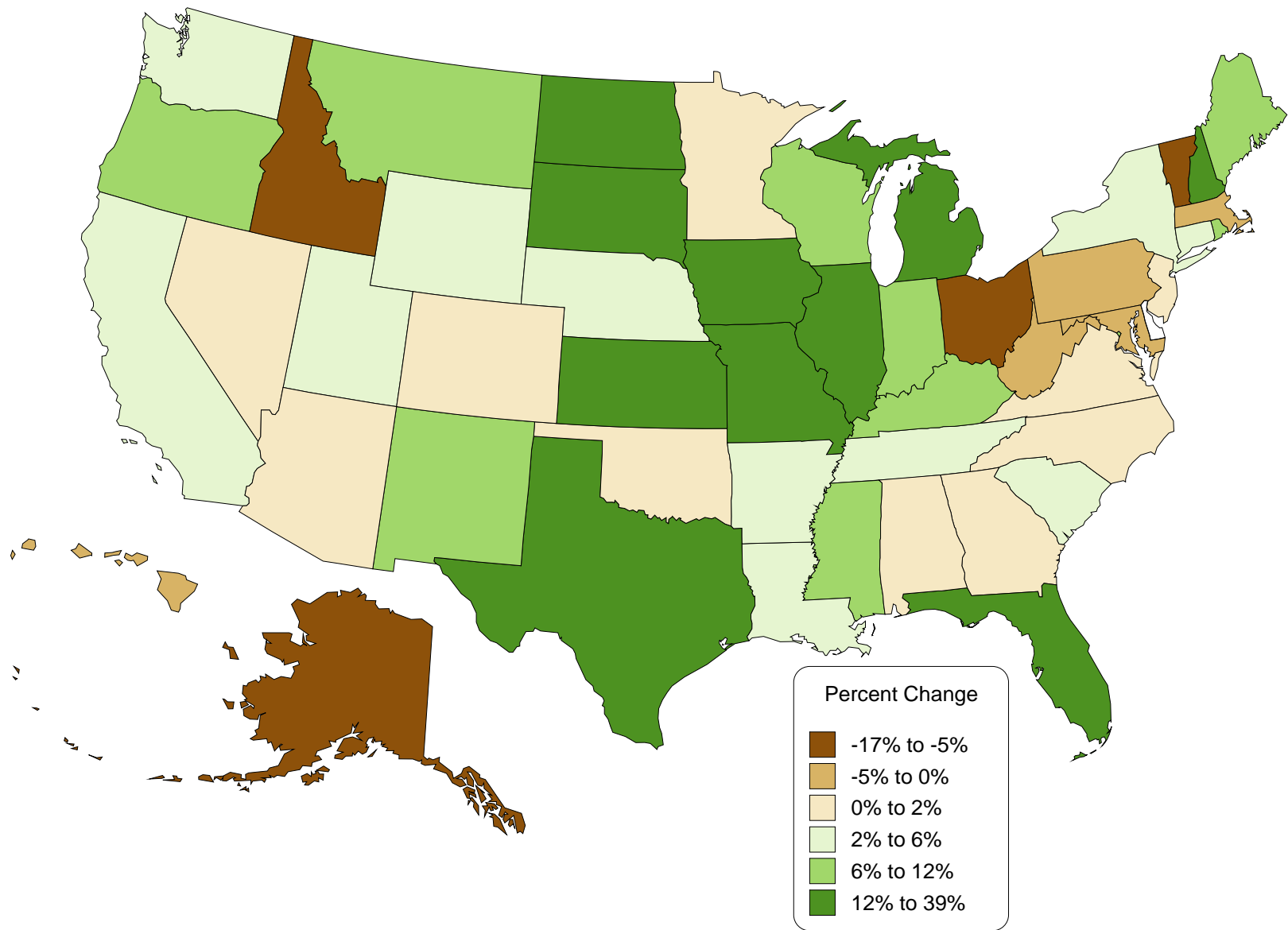


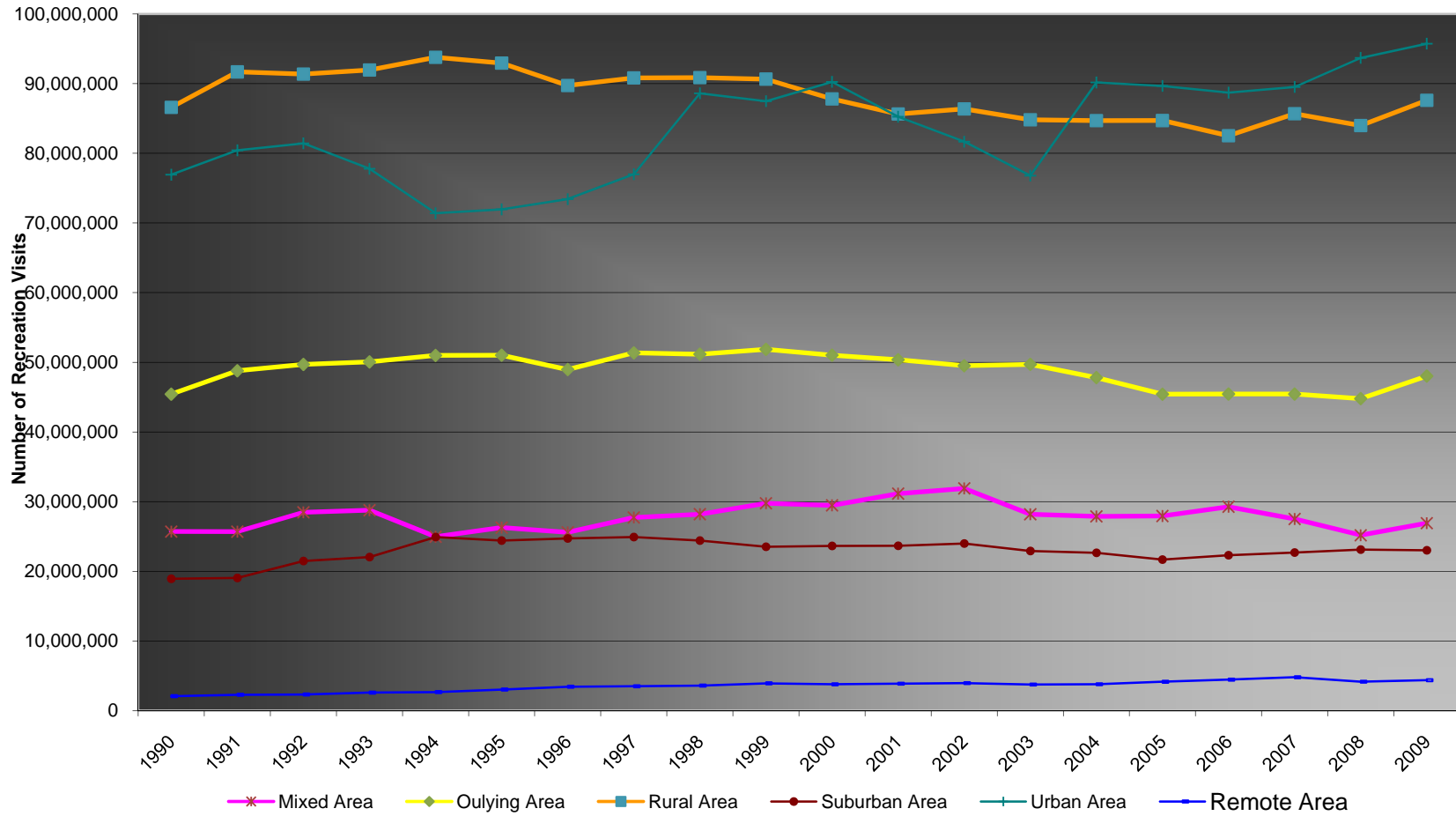
Table 3. 2009 Recreation Visits/Visitor Days by Region

Region	Recreation Visits	Percent Change	Recreation Visitor Days	Percent Change
Alaska Region	2,278,488	-5.2%	1,610,023	-6.0%
Intermountain Region	42,882,594	5.7%	29,674,258	4.0%
Midwest Region	20,655,336	8.9%	5,949,264	9.5%
National Capital Region	47,717,757	5.3%	4,658,049	-1.1%
Northeast Region	54,240,906	0.7%	12,760,946	1.6%
Pacific West Region	56,655,395	2.4%	26,536,430	2.9%
Southeast Region	61,149,465	4.8%	23,117,961	3.2%
NPS Total	285,579,941	3.9%	104,306,930	3.1%

Table 4. 2009 Recreation Visits / Visitor Days by Population Center

Population Center	Recreation Visits	Percent Change	Recreation Visitor Days	Percent Change
Mixed area	26,899,228	1.2%	11,106,185	-0.4%
Outlying area	48,012,951	7.2%	21,467,920	3.5%
Remote area	4,355,928	5.1%	1,750,634	2.2%
Rural area	87,594,417	4.3%	53,799,207	4.3%
Suburban area	22,988,903	-0.5%	4,211,105	-1.5%
Urban area	95,728,514	3.7%	11,971,879	2.3%
NPS Total	285,579,941	3.9%	104,306,930	3.1%

Figure 3. Recreation Visits by Population Center, 1990–2009



Note: Definitions of population centers are described in the endnotes.

Table 5. 2009 Recreation & Non-Recreation Visits / Visitor Days by Park

Park Name	Visits				Days			
	Recreation	% Change	Non-Rec	% Change	Recreation	% Change	Non-Rec	% Change
Abraham Lincoln Birthplace NHP ¹	221,111	10.3%	0	0.0%	18,426	10.3%	0	0.0%
Acadia NP	2,227,698	7.3%	47,100	0.0%	953,963	7.6%	3,925	0.0%
Adams NHP	253,656	5.0%	3,507	-2.5%	20,280	11.3%	146	-2.6%
Agate Fossil Beds NM	12,694	2.2%	0	0.0%	2,754	2.5%	0	0.0%
Alibates Flint Quarries NM	2,918	27.0%	0	0.0%	608	27.0%	0	0.0%
Allegheny Portage Railroad NHS	118,931	4.3%	180	0.0%	13,330	1.6%	4	0.0%
Amistad NRA	2,573,966	30.0%	1,128	0.0%	1,598,029	29.4%	94	0.0%
Andersonville NHS	136,267	-14.6%	0	0.0%	22,711	-14.6%	0	0.0%
Andrew Johnson NHS	63,296	-8.8%	0	0.0%	3,027	-5.4%	0	0.0%
Aniakchak NM & PRES	14	40.0%	0	0.0%	0	0.0%	42	0.0%
Antietam NB	378,966	7.5%	0	0.0%	68,161	8.9%	0	0.0%
Apostle Islands NL	170,202	4.5%	1,054	0.0%	66,717	27.2%	22	0.0%
Appomattox Court House NHP	185,443	3.7%	0	0.0%	12,800	3.7%	0	0.0%
Arches NP	996,312	7.3%	0	0.0%	357,622	7.1%	0	0.0%
Arkansas Post NMEM	32,160	-25.4%	0	0.0%	4,020	-25.4%	0	0.0%
Arlington House The R.E. Lee MEM	603,773	16.4%	0	0.0%	25,157	16.4%	0	0.0%
Assateague Island NS	2,129,658	5.9%	3,600	0.0%	1,565,341	9.7%	300	0.0%
Aztec Ruins NM	38,234	-1.2%	1,250	9.6%	4,779	-1.2%	85	2648.6%
Badlands NP	933,918	10.4%	18,864	0.0%	349,778	13.8%	786	0.0%
Bandelier NM	212,544	2.4%	840	0.0%	74,133	6.5%	11	0.0%
Bent's Old Fort NHS	28,131	12.5%	0	0.0%	4,103	12.5%	0	0.0%
Bering Land Bridge NPRES	1,054	3.4%	1,120	-3.9%	264	3.4%	747	-3.9%
Big Bend NP	363,905	0.4%	2,364	0.0%	705,136	1.4%	591	0.0%
Big Cypress NPRES	812,207	-0.2%	0	0.0%	270,662	9.7%	0	0.0%
Big Hole NB	49,822	-9.1%	0	0.0%	6,561	-1.5%	0	0.0%
Big South Fork NRA	686,747	1.6%	0	0.0%	430,853	0.8%	0	0.0%
Big Thicket NPRES	100,509	7.3%	0	0.0%	34,460	9.9%	0	0.0%
Bighorn Canyon NRA	205,293	15.0%	6,900	0.0%	64,798	10.3%	288	0.0%
Biscayne NP	437,745	-36.2%	0	0.0%	126,070	-31.5%	0	0.0%
Black Canyon of the Gunnison NP	171,451	7.0%	0	0.0%	78,146	4.5%	0	0.0%
Blue Ridge PKWY	15,936,316	-2.3%	1,942,260	0.0%	8,267,391	-2.2%	80,928	0.0%
Bluestone NSR	45,904	-2.2%	0	0.0%	9,564	-2.2%	0	0.0%
Booker T. Washington NM	21,216	6.1%	84	0.0%	2,835	-7.2%	1	0.0%
Boston African American NHS	298,519	6.5%	0	0.0%	7,723	3.5%	0	0.0%
Boston NHP	2,155,026	-3.5%	65,340	-0.5%	161,104	-3.0%	926	-0.5%
Brown v. Board of Education NHS	19,228	13.4%	0	0.0%	3,205	13.4%	0	0.0%
Bryce Canyon NP	1,216,377	16.6%	445,610	-7.6%	764,777	15.6%	11,140	-7.6%
Buck Island Reef NM	47,341	2.9%	0	0.0%	24,783	2.0%	0	0.0%
Buffalo NR	1,522,586	8.3%	0	0.0%	746,393	17.1%	0	0.0%
Cabrillo NM	767,687	8.8%	81,794	0.0%	95,680	9.1%	1,704	0.0%
Canaveral NS	1,001,665	0.7%	0	0.0%	212,430	0.5%	0	0.0%
Cane River Creole NHP	27,411	11.5%	0	0.0%	4,568	11.5%	0	0.0%
Canyon de Chelly NM	826,425	-1.1%	1,218,416	-1.4%	468,326	-1.0%	203,069	-1.4%
Canyonlands NP	436,241	-0.1%	0	0.0%	323,239	-3.5%	0	0.0%
Cape Cod NS	4,311,949	-7.2%	29,548	0.0%	702,077	-7.5%	14,774	0.0%
Cape Hatteras NS	2,282,543	6.3%	121,919	12.1%	880,677	7.7%	36,095	9.7%

Table 5. 2009 Recreation & Non-Recreation Visits / Visitor Days by Park (continued)

Park Name	Visits				Days			
	Recreation	% Change	Non-Rec	% Change	Recreation	% Change	Non-Rec	% Change
Cape Krusenstern NM	1,810	14.9%	1,020	-19.1%	307	27.2%	680	-19.1%
Cape Lookout NS	601,954	23.6%	4,800	0.0%	216,442	9.5%	1,200	0.0%
Capitol Reef NP	617,208	2.0%	47,775	1.2%	91,145	0.3%	3,981	1.2%
Capulin Volcano NM	50,935	12.7%	420	0.0%	5,927	12.3%	35	0.0%
Carl Sandburg Home NHS ⁴	83,550	293.5%	0	0.0%	10,652	-5.6%	0	0.0%
Carlsbad Caverns NP	432,639	8.1%	0	0.0%	141,337	7.3%	0	0.0%
Casa Grande Ruins NM	76,350	3.5%	2,160	0.0%	8,667	3.5%	18	0.0%
Castillo de San Marcos NM	667,783	7.9%	0	0.0%	41,736	7.9%	0	0.0%
Castle Clinton NM	4,080,152	9.5%	1,275	64.5%	171,302	9.0%	114	493.1%
Catoctin Mountain Park	440,294	-5.7%	193,102	-2.5%	154,792	-3.2%	1,896	-1.7%
Cedar Breaks NM	492,353	-8.5%	46,623	-9.4%	83,424	-8.1%	7,771	-9.3%
Chaco Culture NHP ⁶	37,376	0.5%	10,560	0.0%	22,253	-36.6%	880	0.0%
Chamizal NMEM	215,852	9.1%	5,980	-28.5%	23,606	3.6%	1,744	-28.5%
Channel Islands NP	348,745	5.0%	13,388	53.3%	279,285	-1.2%	26,776	53.3%
Charles Pinckney NHS	43,447	-1.4%	0	0.0%	7,241	-1.4%	0	0.0%
Chattahoochee River NRA	2,830,655	0.2%	0	0.0%	943,551	0.2%	0	0.0%
Chesapeake & Ohio Canal NHP ⁴	3,751,681	20.6%	11,880	0.0%	630,380	19.8%	990	0.0%
Chickamauga & Chattanooga NMP	992,448	-0.1%	2,320,844	1.1%	161,551	1.0%	29,011	1.1%
Chickasaw NRA	1,238,484	0.6%	1,489,028	0.3%	381,134	-1.0%	9,927	0.3%
Chiricahua NM	60,851	7.6%	3,600	0.0%	24,673	2.3%	100	0.0%
Christiansted NHS	114,743	9.1%	0	0.0%	5,389	7.0%	0	0.0%
City of Rocks NRES	96,649	12.5%	0	0.0%	28,190	12.5%	0	0.0%
Clara Barton NHS	10,986	22.0%	0	0.0%	916	22.0%	0	0.0%
Colonial NHP	3,324,751	-0.2%	2,092,202	0.0%	294,859	-0.9%	87,175	0.0%
Colorado NM	400,266	2.4%	316,852	-0.4%	93,008	4.1%	13,202	-0.4%
Congaree NP	122,970	17.2%	0	0.0%	37,372	13.2%	0	0.0%
Coronado NMEM	106,409	16.9%	2,508	0.0%	8,941	20.4%	104	0.0%
Cowpens NB	224,394	-4.6%	0	0.0%	14,678	-5.9%	0	0.0%
Crater Lake NP	446,516	7.4%	49,600	0.0%	253,445	12.4%	2,067	0.0%
Craters of the Moon NM	194,046	-14.6%	0	0.0%	48,914	-5.6%	0	0.0%
Cumberland Gap NHP	883,663	4.7%	7,984,305	-10.1%	147,778	16.8%	431,246	-9.0%
Cumberland Island NS	77,588	-6.3%	0	0.0%	61,555	-4.1%	0	0.0%
Curecanti NRA	953,169	-5.4%	0	0.0%	342,149	-4.5%	0	0.0%
Cuyahoga Valley NP	2,589,288	-8.4%	192	-5.9%	585,857	-7.9%	8	-11.1%
Dayton Aviation Heritage NHP	58,301	9.4%	0	0.0%	6,674	9.5%	0	0.0%
De Soto NMEM	246,608	-7.3%	0	0.0%	33,908	-7.3%	0	0.0%
Death Valley NP	828,574	-5.0%	29,526	-4.1%	571,316	-0.6%	3,691	-4.1%
Delaware Water Gap NRA	5,213,030	1.7%	123,984	-4.8%	1,920,617	1.4%	5,166	-4.8%
Denali NP & PRES	358,041	-17.2%	826,692	9.5%	456,911	-15.3%	17,223	9.5%
Devils Postpile NM	110,212	-17.8%	0	0.0%	39,857	-12.0%	0	0.0%
Devils Tower NM	391,023	16.3%	2,071	-20.2%	96,681	7.8%	87	-20.1%
Dinosaur NM	203,862	1.1%	732	0.0%	129,769	-6.6%	61	0.0%
Dry Tortugas NP	52,011	-18.7%	873	-43.9%	55,405	-15.7%	873	-43.9%
Edgar Allan Poe NHS	17,463	34.7%	0	0.0%	1,455	34.7%	0	0.0%
Effigy Mounds NM	78,177	13.8%	1,200	0.0%	16,287	13.8%	17	0.0%
Eisenhower NHS	64,212	-9.2%	0	0.0%	8,562	-9.2%	0	0.0%
El Malpais NM	123,290	7.1%	720	0.0%	41,789	6.6%	15	0.0%
El Morro NM	48,245	6.8%	10,055	6.6%	12,988	7.3%	277	6.7%

Table 5. 2009 Recreation & Non-Recreation Visits / Visitor Days by Park (continued)

Park Name	Visits				Days			
	Recreation	% Change	Non-Rec	% Change	Recreation	% Change	Non-Rec	% Change
Eleanor Roosevelt NHS	54,393	1.4%	0	0.0%	6,799	1.4%	0	0.0%
Eugene O'Neill NHS	3,783	48.7%	179	12.6%	913	6.9%	30	12.6%
Everglades NP	900,882	9.6%	3,278	-40.6%	300,803	1.1%	1,229	-40.6%
Federal Hall NMEM	204,880	-3.6%	2,558	35.1%	13,518	34.6%	275	29.8%
Fire Island NS	569,667	-5.8%	234,312	-4.9%	169,369	-8.0%	58,578	-4.9%
First Ladies NHS	10,466	7.1%	0	0.0%	1,744	7.1%	0	0.0%
Flight 93 NMEM	149,668	10.0%	0	0.0%	12,472	10.0%	0	0.0%
Florissant Fossil Beds NM	64,251	12.7%	0	0.0%	6,639	13.6%	0	0.0%
Ford's Theatre NHS ⁶	658,271	96.0%	10,205	310.7%	56,036	698.3%	1,701	310.7%
Fort Bowie NHS	9,641	-4.5%	0	0.0%	1,607	-4.5%	0	0.0%
Fort Caroline NMEM	288,606	3.1%	0	0.0%	24,051	3.1%	0	0.0%
Fort Davis NHS	50,968	3.4%	1,054	16.5%	6,371	3.4%	346	150.0%
Fort Donelson NB	203,456	-2.5%	376,084	-19.6%	11,702	0.7%	1,034	-19.6%
Fort Frederica NM	296,117	19.4%	1,800	0.0%	24,905	19.4%	37	0.0%
Fort Laramie NHS	56,923	17.9%	365	0.0%	7,115	17.9%	46	0.0%
Fort Larned NHS	27,443	27.7%	0	0.0%	4,574	27.7%	0	0.0%
Fort Matanzas NM	793,253	-2.4%	0	0.0%	66,804	-2.8%	0	0.0%
Fort McHenry NM & HS	605,870	1.3%	720	0.0%	75,734	1.3%	30	0.0%
Fort Necessity NB	197,271	54.5%	120	0.0%	24,829	54.4%	4	0.0%
Fort Point NHS	1,385,134	-0.4%	0	0.0%	65,562	-0.1%	0	0.0%
Fort Pulaski NM	435,661	23.5%	19,476	0.0%	90,778	23.5%	406	0.0%
Fort Raleigh NHS	338,212	8.5%	1,344	0.0%	44,408	8.7%	112	0.0%
Fort Scott NHS	28,544	12.7%	555	3.4%	3,568	12.7%	15	4.0%
Fort Smith NHS	63,540	-15.5%	0	0.0%	7,043	-15.5%	0	0.0%
Fort Stanwix NM	93,170	30.7%	0	0.0%	11,647	30.7%	0	0.0%
Fort Sumter NM	785,604	5.5%	0	0.0%	156,166	5.3%	0	0.0%
Fort Union NM	11,070	20.7%	240	42.9%	1,089	20.7%	2	50.0%
Fort Union Trading Post NHS	15,141	31.3%	575	5.7%	1,617	34.4%	12	5.1%
Fort Vancouver NHS	1,017,326	13.7%	0	0.0%	88,983	4.9%	0	0.0%
Fort Washington Park	339,370	-29.9%	0	0.0%	109,760	-30.3%	0	0.0%
Fossil Butte NM	18,693	5.4%	550	-22.2%	2,441	3.6%	26	-7.1%
Franklin Delano Roosevelt MEM	2,591,241	-1.2%	0	0.0%	107,969	-1.2%	0	0.0%
Frederick Douglass NHS	43,483	14.9%	0	0.0%	3,624	14.9%	0	0.0%
Frederick Law Olmsted NHS ⁶	5,007	68.6%	64	42.2%	835	68.6%	18	19.3%
Fredericksburg & Spotsylvania NMP ⁴	906,175	91.2%	1,224,339	15.5%	33,710	-41.6%	12,400	-31.4%
Friendship Hill NHS	31,454	2.7%	0	0.0%	5,876	2.2%	0	0.0%
Gates of the Arctic NP & PRES	9,975	-12.5%	0	0.0%	9,671	-25.6%	0	0.0%
Gateway NRA	9,010,522	-4.5%	1,297,184	1.1%	2,236,683	-5.4%	216,197	1.1%
Gauley River NRA	113,185	0.8%	0	0.0%	38,153	-2.3%	0	0.0%
General Grant NMEM	100,874	10.3%	1,436	40.9%	4,203	-6.5%	134	15.3%
George Rogers Clark NHP ⁶	103,284	-9.2%	0	0.0%	11,534	-9.2%	0	0.0%
George Washington Birthplace NM	113,083	13.1%	7,200	0.0%	28,184	15.9%	600	0.0%
George Washington Carver NM	38,899	-3.7%	0	0.0%	4,214	-3.7%	0	0.0%
George Washington MEM PKWY	6,938,309	-1.0%	29,177,902	-3.8%	624,958	-2.7%	1,215,746	-3.8%
Gettysburg NMP ⁴	1,013,002	-30.4%	74,400	0.0%	392,994	14.2%	1,029	0.0%
Gila Cliff Dwellings NM	43,016	10.3%	0	0.0%	3,585	10.3%	0	0.0%
Glacier Bay NP & PRES	438,361	4.6%	322	-20.3%	453,816	2.2%	8,740	-17.4%
Glacier NP	2,031,348	12.4%	22,986	24.0%	2,085,923	13.9%	15,979	20.5%

Table 5. 2009 Recreation & Non-Recreation Visits / Visitor Days by Park (continued)

Park Name	Visits				Days			
	Recreation	% Change	Non-Rec	% Change	Recreation	% Change	Non-Rec	% Change
Glen Canyon NRA ⁹	1,960,345	0.7%	19,349	-2.5%	3,106,796	-0.9%	19,349	-2.5%
Golden Gate NRA ⁴	15,036,372	3.3%	0	0.0%	2,029,369	10.6%	0	0.0%
Golden Spike NHS	45,334	13.4%	31,000	0.0%	9,340	15.6%	1,292	0.0%
Governors Island NM	325,840	58.9%	0	0.0%	54,307	58.9%	0	0.0%
Grand Canyon NP	4,348,068	-1.7%	70,710	7.4%	5,649,689	-2.0%	5,893	7.4%
Grand Portage NM	76,025	-1.7%	0	0.0%	13,556	-1.0%	0	0.0%
Grand Teton NP	2,580,081	3.8%	1,265,757	-6.0%	1,542,603	1.4%	105,480	-6.0%
Grant-Kohrs Ranch NHS	20,099	20.8%	0	0.0%	2,060	20.8%	0	0.0%
Great Basin NP	84,974	22.7%	700	1.4%	79,919	17.9%	29	1.4%
Great Sand Dunes NP & PRES	289,955	5.9%	470	0.0%	160,683	10.5%	39	0.0%
Great Smoky Mountains NP	9,491,437	4.9%	11,743,856	4.6%	5,899,744	5.3%	489,328	4.6%
Greenbelt Park	188,043	14.6%	0	0.0%	68,674	18.6%	0	0.0%
Guadalupe Mountains NP	198,882	21.5%	0	0.0%	38,864	6.3%	0	0.0%
Guilford Courthouse NMP	290,368	-18.0%	4,472,621	-6.9%	23,679	-21.4%	3,094	-6.9%
Gulf Islands NS ⁶	4,132,674	101.2%	92,255	17.2%	801,026	92.2%	3,587	30.7%
Hagerman Fossil Beds NM	27,263	17.7%	0	0.0%	3,408	17.7%	0	0.0%
Haleakala NP	1,109,104	-6.4%	29,088	0.0%	231,535	-6.9%	1,680	0.0%
Hamilton Grange NMEM ⁶	150	-78.3%	296	-61.4%	25	-76.0%	40	-65.4%
Hampton NHS	39,334	11.6%	600	0.0%	4,917	11.5%	50	0.0%
Harpers Ferry NHP	275,044	8.2%	0	0.0%	91,682	8.2%	0	0.0%
Harry S Truman NHS	28,384	-8.0%	0	0.0%	1,821	-6.9%	0	0.0%
Hawaii Volcanoes NP	1,233,105	-2.9%	1,820,039	-0.6%	700,527	-2.9%	50,051	-0.6%
Herbert Hoover NHS	162,886	14.2%	18,000	0.0%	13,574	14.2%	100	0.0%
Home of Franklin D. Roosevelt NHS	123,033	-0.8%	0	0.0%	18,394	-1.6%	0	0.0%
Homestead NM of America	71,301	0.0%	399,221	7.2%	9,991	0.3%	5,323	7.2%
Franklin Delano Roosevelt MEM	2,591,241	-1.2%	0	0.0%	107,969	-1.2%	0	0.0%
Frederick Douglass NHS	43,483	14.9%	0	0.0%	3,624	14.9%	0	0.0%
Frederick Law Olmsted NHS ⁶	5,007	68.6%	64	42.2%	835	68.6%	18	19.3%
Fredericksburg & Spotsylvania NMP ⁴	906,175	91.2%	1,224,339	15.5%	33,710	-41.6%	12,400	-31.4%
Friendship Hill NHS	31,454	2.7%	0	0.0%	5,876	2.2%	0	0.0%
Gates of the Arctic NP & PRES	9,975	-12.5%	0	0.0%	9,671	-25.6%	0	0.0%
Gateway NRA	9,010,522	-4.5%	1,297,184	1.1%	2,236,683	-5.4%	216,197	1.1%
Gauley River NRA	113,185	0.8%	0	0.0%	38,153	-2.3%	0	0.0%
General Grant NMEM	100,874	10.3%	1,436	40.9%	4,203	-6.5%	134	15.3%
George Rogers Clark NHP ⁶	103,284	-9.2%	0	0.0%	11,534	-9.2%	0	0.0%
George Washington Birthplace NM	113,083	13.1%	7,200	0.0%	28,184	15.9%	600	0.0%
George Washington Carver NM	38,899	-3.7%	0	0.0%	4,214	-3.7%	0	0.0%
George Washington MEM PKWY	6,938,309	-1.0%	29,177,902	-3.8%	624,958	-2.7%	1,215,746	-3.8%
Gettysburg NMP ⁴	1,013,002	-30.4%	74,400	0.0%	392,994	14.2%	1,029	0.0%
Gila Cliff Dwellings NM	43,016	10.3%	0	0.0%	3,585	10.3%	0	0.0%
Glacier Bay NP & PRES	438,361	4.6%	322	-20.3%	453,816	2.2%	8,740	-17.4%
Glacier NP	2,031,348	12.4%	22,986	24.0%	2,085,923	13.9%	15,979	20.5%
Glen Canyon NRA ⁹	1,960,345	0.7%	19,349	-2.5%	3,106,796	-0.9%	19,349	-2.5%
Golden Gate NRA ⁴	15,036,372	3.3%	0	0.0%	2,029,369	10.6%	0	0.0%
Golden Spike NHS	45,334	13.4%	31,000	0.0%	9,340	15.6%	1,292	0.0%
Governors Island NM	325,840	58.9%	0	0.0%	54,307	58.9%	0	0.0%
Grand Canyon NP	4,348,068	-1.7%	70,710	7.4%	5,649,689	-2.0%	5,893	7.4%
Grand Portage NM	76,025	-1.7%	0	0.0%	13,556	-1.0%	0	0.0%

Table 5. 2009 Recreation & Non-Recreation Visits / Visitor Days by Park (continued)

Park Name	Visits				Days			
	Recreation	% Change	Non-Rec	% Change	Recreation	% Change	Non-Rec	% Change
Grand Teton NP	2,580,081	3.8%	1,265,757	-6.0%	1,542,603	1.4%	105,480	-6.0%
Grant-Kohrs Ranch NHS	20,099	20.8%	0	0.0%	2,060	20.8%	0	0.0%
Great Basin NP	84,974	22.7%	700	1.4%	79,919	17.9%	29	1.4%
Great Sand Dunes NP & PRES	289,955	5.9%	470	0.0%	160,683	10.5%	39	0.0%
Great Smoky Mountains NP	9,491,437	4.9%	11,743,856	4.6%	5,899,744	5.3%	489,328	4.6%
Greenbelt Park	188,043	14.6%	0	0.0%	68,674	18.6%	0	0.0%
Guadalupe Mountains NP	198,882	21.5%	0	0.0%	38,864	6.3%	0	0.0%
Guilford Courthouse NMP	290,368	-18.0%	4,472,621	-6.9%	23,679	-21.4%	3,094	-6.9%
Gulf Islands NS ⁶	4,132,674	101.2%	92,255	17.2%	801,026	92.2%	3,587	30.7%
Hagerman Fossil Beds NM	27,263	17.7%	0	0.0%	3,408	17.7%	0	0.0%
Haleakala NP	1,109,104	-6.4%	29,088	0.0%	231,535	-6.9%	1,680	0.0%
Hamilton Grange NMEM ⁶	150	-78.3%	296	-61.4%	25	-76.0%	40	-65.4%
Hampton NHS	39,334	11.6%	600	0.0%	4,917	11.5%	50	0.0%
Harpers Ferry NHP	275,044	8.2%	0	0.0%	91,682	8.2%	0	0.0%
Harry S Truman NHS	28,384	-8.0%	0	0.0%	1,821	-6.9%	0	0.0%
Hawaii Volcanoes NP	1,233,105	-2.9%	1,820,039	-0.6%	700,527	-2.9%	50,051	-0.6%
Herbert Hoover NHS	162,886	14.2%	18,000	0.0%	13,574	14.2%	100	0.0%
Home of Franklin D. Roosevelt NHS	123,033	-0.8%	0	0.0%	18,394	-1.6%	0	0.0%
Homestead NM of America	71,301	0.0%	399,221	7.2%	9,991	0.3%	5,323	7.2%
Hopewell Culture NHP	34,179	21.5%	0	0.0%	5,697	21.5%	0	0.0%
Hopewell Furnace NHS	53,186	7.8%	600	0.0%	5,319	7.8%	25	0.0%
Horseshoe Bend NMP	72,232	42.4%	931,492	5.1%	14,399	37.2%	25,872	5.1%
Hot Springs NP	1,284,707	3.8%	2,079,230	-4.8%	238,049	3.6%	34,654	-4.8%
Hovenweep NM	27,855	9.6%	300	0.0%	7,899	8.3%	5	0.0%
Hubbell Trading Post NHS	99,267	60.2%	4,584	0.0%	4,274	60.2%	88	0.0%
Independence NHP	3,967,694	-2.7%	0	0.0%	500,885	-3.0%	0	0.0%
Indiana Dunes NL	1,944,568	6.1%	21,447	-28.4%	452,063	5.4%	894	-28.4%
Isle Royale NP	14,653	4.4%	181	-1.1%	86,676	-7.7%	699	36.8%
James A. Garfield NHS	17,100	-37.3%	0	0.0%	2,850	-37.3%	0	0.0%
Jean Lafitte NHP & PRES	335,075	-1.4%	192,000	0.0%	44,786	1.9%	7,610	0.0%
Jefferson NEM	2,360,109	20.7%	270,413	-7.1%	786,702	20.7%	3,831	-7.1%
Jewel Cave NM	129,595	29.0%	201	-19.3%	22,313	24.2%	17	-19.3%
Jimmy Carter NHS	69,972	-15.1%	0	0.0%	7,446	-18.6%	0	0.0%
John D. Rockefeller, Jr. MEM PKWY	1,139,923	3.7%	10,800	0.0%	143,662	-1.7%	225	0.0%
John Day Fossil Beds NM	130,925	16.3%	840	0.0%	12,932	15.6%	7	0.0%
John F. Kennedy NHS	16,333	61.9%	0	0.0%	681	61.9%	0	0.0%
John Muir NHS	34,516	20.0%	2,132	18.6%	4,510	19.0%	44	18.2%
Johnstown Flood NMEM	114,350	-15.5%	144,247	18.4%	10,183	-15.6%	361	18.4%
Joshua Tree NP	1,304,471	-6.3%	4,823	-5.6%	822,177	4.1%	402	-5.6%
Kalaupapa NHP	30,654	-49.7%	0	0.0%	20,436	-49.7%	0	0.0%
Kaloko Honokohau NHP	166,380	58.7%	0	0.0%	19,482	-11.6%	0	0.0%
Katmai NP & PRES	43,035	440.0%	250	0.0%	25,642	411.0%	167	0.0%
Kenai Fjords NP	218,358	-19.8%	0	0.0%	57,418	-23.0%	0	0.0%
Kennesaw Mountain NBP	1,372,228	-3.1%	25,749,151	0.1%	174,941	-3.4%	343,322	0.1%
Kings Canyon NP	609,296	6.0%	20,452	0.6%	1,634,082	8.2%	6,817	0.6%
Kings Mountain NMP	277,576	8.9%	267,611	8.3%	24,943	7.7%	3,715	8.3%
Klondike Gold Rush NHP Alaska ³	880,512	-5.9%	0	0.0%	321,004	-2.2%	0	0.0%
Klondike Gold Rush NHP Seattle ³	54,219	-7.1%	0	0.0%	7,907	-7.1%	0	0.0%

Table 5. 2009 Recreation & Non-Recreation Visits / Visitor Days by Park (continued)

Park Name	Visits				Days			
	Recreation	% Change	Non-Rec	% Change	Recreation	% Change	Non-Rec	% Change
Knife River Indian Villages NHS	29,390	18.5%	500	5.0%	3,953	23.8%	21	4.6%
Kobuk Valley NP	1,879	20.1%	1,326	-2.9%	406	28.1%	884	-2.9%
Korean War Veterans Memorial	3,117,046	-14.7%	0	0.0%	129,877	-14.7%	0	0.0%
Lake Chelan NRA	34,554	37.5%	0	0.0%	36,520	65.0%	0	0.0%
Lake Clark NP & PRES	9,711	42.8%	0	0.0%	7,707	41.8%	0	0.0%
Lake Mead NRA	7,668,689	0.9%	278,141	0.9%	5,292,291	-2.1%	139,069	0.9%
Lake Meredith NRA	1,080,644	23.5%	0	0.0%	251,633	21.9%	0	0.0%
Lake Roosevelt NRA ⁵	1,382,663	3.4%	1,200	0.0%	413,453	12.9%	50	0.0%
Lassen Volcanic NP	365,639	-3.1%	0	0.0%	355,948	9.3%	0	0.0%
Lava Beds NM	129,639	8.0%	771	0.0%	37,154	5.2%	33	0.0%
LBJ Memorial Grove on the Potomac	333,368	-18.9%	0	0.0%	13,891	-18.9%	0	0.0%
Lewis & Clark NHP	225,846	-1.8%	116	50.6%	29,944	-2.6%	3	55.0%
Lincoln Boyhood NMEM	182,172	23.8%	16,200	0.0%	17,079	23.8%	225	0.0%
Lincoln Home NHS	464,074	38.3%	10,109	-8.2%	52,963	113.4%	5,681	-7.3%
Lincoln Memorial	5,255,570	12.3%	0	0.0%	262,107	34.4%	0	0.0%
Little Bighorn Battlefield NM	302,811	7.3%	2,652	8.4%	25,237	7.2%	111	8.3%
Little River Canyon NPRES	189,251	-4.3%	0	0.0%	19,212	-11.6%	0	0.0%
Little Rock Central High School NHS	60,103	42.1%	0	0.0%	5,009	42.1%	0	0.0%
Longfellow NHS	39,065	-34.7%	0	0.0%	4,883	-34.7%	0	0.0%
Lowell NHP	565,960	-1.5%	3,306	-6.5%	71,552	-1.0%	413	-6.5%
Lyndon B. Johnson NHP ⁴	98,218	5.4%	0	0.0%	14,421	-17.9%	0	0.0%
Maggie L. Walker NHS	9,853	33.7%	0	0.0%	1,232	300.9%	0	0.0%
Mammoth Cave NP	503,856	12.9%	142,177	3.1%	273,623	11.8%	5,924	3.1%
Manassas NBP	578,383	-2.8%	480	0.0%	36,149	-2.8%	7	0.0%
Manzanar NHS	89,190	13.7%	0	0.0%	11,149	13.7%	0	0.0%
Marsh-Billings-Rockefeller NHP	31,129	-16.1%	0	0.0%	5,188	-16.1%	0	0.0%
Martin Luther King, Jr. NHS	650,343	-1.3%	0	0.0%	82,318	-5.7%	0	0.0%
Martin Van Buren NHS	23,216	9.4%	720	0.0%	2,091	9.7%	15	0.0%
Mary McLeod Bethune Council House NHS	21,811	23.7%	0	0.0%	3,635	23.7%	0	0.0%
Mesa Verde NP	550,377	-0.2%	14,916	-7.4%	345,042	-1.7%	1,243	-7.4%
Minute Man NHP	1,096,024	2.7%	0	0.0%	137,003	2.7%	0	0.0%
Minuteman Missile NHS	36,777	20.1%	0	0.0%	2,273	16.4%	0	0.0%
Missouri NRR	186,313	14.9%	0	0.0%	4,654	15.6%	0	0.0%
Mojave NPRES	528,865	-14.5%	0	0.0%	266,613	-14.2%	0	0.0%
Monocacy NB	34,553	10.5%	0	0.0%	4,319	10.5%	0	0.0%
Montezuma Castle NM	601,465	-0.4%	420	0.0%	50,122	-0.4%	9	0.0%
Moore's Creek NB	68,864	53.6%	0	0.0%	4,308	66.7%	0	0.0%
Morristown NHP	298,060	7.5%	0	0.0%	71,253	10.0%	0	0.0%
Mount Rainier NP	1,151,654	-1.0%	549,500	-4.1%	1,152,269	3.0%	45,792	-4.1%
Mount Rushmore NMEM	2,260,192	26.3%	774,261	23.4%	247,992	26.3%	21,507	23.4%
Muir Woods NM	779,880	-7.0%	0	0.0%	86,632	-7.0%	0	0.0%
Natchez NHP	218,126	-6.2%	0	0.0%	32,416	-5.2%	0	0.0%
Natchez Trace PKWY	5,934,363	3.3%	9,433,442	15.7%	1,995,603	3.0%	786,120	15.7%
National Capital Parks Central ^{3, 7}	3,678,876	43.7%	0	0.0%	732,944	-24.2%	0	0.0%
National Capital Parks East ³	1,272,212	-1.9%	23,378,877	-1.4%	149,610	-2.7%	1,182,616	-0.9%
National Park of American Samoa ⁷	3,242	-12.0%	0	0.0%	541	-11.9%	0	0.0%
Natural Bridges NM	92,023	0.2%	800	0.0%	44,220	1.5%	33	0.0%
Navajo NM	77,901	5.1%	15,849	-19.4%	15,107	5.7%	330	-19.4%

Table 5. 2009 Recreation & Non-Recreation Visits / Visitor Days by Park (continued)

Park Name	Visits				Days			
	Recreation	% Change	Non-Rec	% Change	Recreation	% Change	Non-Rec	% Change
New Bedford Whaling NHP	279,803	-0.6%	0	0.0%	11,979	0.8%	0	0.0%
New Orleans Jazz NHP	80,828	21.1%	0	0.0%	10,545	13.0%	0	0.0%
New River Gorge NR	1,144,318	-5.7%	2,400	0.0%	207,746	-0.3%	400	0.0%
Nez Perce NHP	176,238	-15.0%	1,800	0.0%	18,793	-37.1%	15	0.0%
Nicodemus NHS	2,978	22.4%	0	0.0%	248	22.4%	0	0.0%
Ninety Six NHS	50,689	-11.5%	0	0.0%	5,280	-11.5%	0	0.0%
Niobrara NSR	68,058	-3.1%	0	0.0%	44,020	-1.1%	0	0.0%
Noatak NPRES	2,474	15.2%	1,207	-21.8%	2,079	12.4%	805	-21.8%
North Cascades NP	26,972	44.0%	0	0.0%	29,583	9.4%	0	0.0%
Obed W&SR	212,933	10.8%	10,800	0.0%	73,574	10.5%	75	0.0%
Ocmulgee NM	110,819	8.0%	0	0.0%	13,853	8.0%	0	0.0%
Olympic NP	3,276,459	6.3%	789,503	-3.2%	1,315,374	10.2%	25,772	-0.6%
Oregon Caves NM	88,496	20.0%	520	0.0%	30,553	14.6%	87	0.0%
Organ Pipe Cactus NM	330,064	-3.0%	986,367	-15.5%	61,097	0.3%	41,099	-15.5%
Ozark NSR	1,308,718	5.2%	0	0.0%	304,063	10.8%	0	0.0%
Padre Island NS	642,163	1.0%	1,800	0.0%	372,117	6.0%	1,200	0.0%
Palo Alto Battlefield NHP ¹	41,599	-7.6%	0	0.0%	6,933	-7.6%	0	0.0%
Pea Ridge NMP	68,746	0.4%	0	0.0%	11,458	0.4%	0	0.0%
Pecos NHP	34,522	5.6%	0	0.0%	3,488	5.9%	0	0.0%
Pennsylvania Avenue NHS	256,874	7.1%	0	0.0%	7,064	7.1%	0	0.0%
Perry's Victory & Intl. Peace MEM	154,457	-1.8%	0	0.0%	15,053	3.0%	0	0.0%
Petersburg NB	162,722	5.7%	365,222	-10.6%	13,494	6.3%	7,609	-10.6%
Petrified Forest NP	631,613	16.2%	120	0.0%	129,355	13.5%	5,468	73.5%
Petroglyph NM	118,688	1.8%	0	0.0%	19,781	1.8%	0	0.0%
Pictured Rocks NL	448,215	12.4%	1,850	0.0%	192,030	9.7%	46	0.0%
Pinnacles NM	171,112	2.5%	0	0.0%	68,858	-20.6%	0	0.0%
Pipe Spring NM	49,433	4.2%	404	0.0%	4,119	4.2%	75	0.0%
Pipestone NM	69,539	-13.2%	0	0.0%	14,487	-13.2%	0	0.0%
Piscataway Park	234,186	-27.8%	0	0.0%	36,353	-28.9%	0	0.0%
Point Reyes NS	2,170,646	-3.4%	25,788	0.0%	916,896	-2.2%	2,149	0.0%
President's Park ³	1,475,182	25.1%	0	0.0%	194,369	30.5%	0	0.0%
Prince William Forest Park	368,365	6.7%	480	0.0%	231,077	2.0%	80	0.0%
Pu'uuhonua o Honaunau NHP	397,665	-4.1%	0	0.0%	33,139	-4.1%	0	0.0%
Pu'ukohola Heiau NHS	99,042	7.0%	120,030	6.3%	4,127	7.0%	1,667	6.3%
Rainbow Bridge NM	113,460	18.7%	0	0.0%	14,183	18.7%	0	0.0%
Redwood NP	444,426	12.0%	0	0.0%	154,877	11.7%	0	0.0%
Richmond NBP	134,634	11.4%	149,200	0.9%	27,348	12.7%	3,108	0.9%
Rio Grande W&SR	947	-41.0%	0	0.0%	7,902	-27.2%	0	0.0%
Rock Creek Park	2,076,500	0.0%	12,367,987	-0.4%	198,020	-2.0%	515,333	-0.4%
Rocky Mountain NP	2,822,325	2.4%	169,204	-1.8%	1,638,991	-0.7%	3,257	-0.6%
Roger Williams NMEM	50,397	9.2%	71,160	9.3%	3,542	11.0%	475	9.3%
Ross Lake NRA	288,458	13.9%	720	0.0%	151,659	20.2%	60	0.0%
Russell Cave NM	24,087	-33.8%	0	0.0%	3,302	-31.9%	0	0.0%
Sagamore Hill NHS	53,800	0.1%	0	0.0%	11,209	0.1%	0	0.0%
Saguaro NP	665,234	-4.8%	2,161,236	5.9%	80,458	-9.2%	45,026	5.9%
Saint Croix NSR	564,326	7.8%	0	0.0%	588,935	6.8%	0	0.0%
Saint Paul's Church NHS	14,432	-0.7%	505	12.2%	1,596	-0.4%	24	4.3%
Saint-Gaudens NHS	34,558	15.9%	0	0.0%	5,667	15.8%	0	0.0%

Table 5. 2009 Recreation & Non-Recreation Visits / Visitor Days by Park (continued)

Park Name	Visits				Days			
	Recreation	% Change	Non-Rec	% Change	Recreation	% Change	Non-Rec	% Change
Salem Maritime NHS	723,088	-15.6%	4	-50.0%	32,788	-55.7%	0	-20.0%
Salinas Pueblo Missions NM	37,848	21.1%	0	0.0%	6,513	19.5%	0	0.0%
Salt River Bay NHP & Ecological Pres	2,540	16.3%	0	0.0%	212	16.3%	0	0.0%
San Antonio Missions NHP	1,567,667	20.3%	0	0.0%	213,853	23.4%	0	0.0%
San Francisco Maritime NHP	4,152,497	1.6%	0	0.0%	363,567	0.7%	0	0.0%
San Juan Island NHP	274,642	7.5%	0	0.0%	18,120	6.2%	0	0.0%
San Juan NHS	1,069,673	-5.8%	0	0.0%	174,861	-3.3%	0	0.0%
Santa Monica Mountains NRA	501,573	19.6%	1,080	-97.6%	82,167	33.0%	29,920	0.0%
Saratoga NHP	89,366	0.6%	120,433	-4.6%	21,944	6.1%	803	-4.6%
Saugus Iron Works NHS ⁶	10,529	-15.3%	45,625	0.0%	1,316	-15.3%	381	0.0%
Scotts Bluff NM	121,391	8.5%	0	0.0%	19,220	8.5%	0	0.0%
Sequoia NP	965,170	3.8%	4,873	22.0%	2,585,803	4.3%	1,624	22.0%
Shenandoah NP	1,120,981	4.2%	10,962	0.0%	800,281	1.0%	229	0.0%
Shiloh NMP	404,134	13.1%	139,416	-13.8%	57,269	30.8%	2,324	-13.8%
Sitka NHP	246,866	2.3%	0	0.0%	12,732	2.9%	0	0.0%
Sleeping Bear Dunes NL	1,165,836	15.6%	0	0.0%	550,867	10.3%	0	0.0%
Springfield Armory NHS	17,779	2.4%	0	0.0%	2,963	2.4%	0	0.0%
Statue of Liberty NM	3,829,483	7.7%	0	0.0%	1,436,056	7.7%	0	0.0%
Steamtown NHS	65,144	-8.4%	43,293	0.0%	15,349	72.6%	1,804	0.0%
Stones River NB	189,952	-4.5%	1,658	11.4%	18,525	-5.2%	38	59.0%
Sunset Crater Volcano NM	187,397	-10.5%	12,000	0.0%	19,521	-10.5%	333	0.0%
Tallgrass Prairie NPRES	23,713	18.1%	0	0.0%	3,952	18.1%	0	0.0%
Thaddeus Kosciuszko NMEM	3,357	-14.3%	0	0.0%	70	-14.3%	0	0.0%
Theodore Roosevelt Birthplace NHS	14,390	-22.6%	441	-67.3%	1,383	-25.2%	33	-86.7%
Theodore Roosevelt Inaugural NHS ⁶	11,735	1307.1%	0	0.0%	2,224	309.5%	0	0.0%
Theodore Roosevelt Island	141,559	29.7%	0	0.0%	21,234	29.7%	0	0.0%
Theodore Roosevelt NP	586,928	13.6%	6,578	0.0%	148,965	22.7%	181	0.0%
Thomas Edison NHP ¹	27,061	237.1%	0	0.0%	1,873	-55.9%	0	0.0%
Thomas Jefferson MEM	2,337,868	-1.1%	0	0.0%	97,411	-1.1%	0	0.0%
Thomas Stone NHS	6,268	9.6%	0	0.0%	261	9.6%	0	0.0%
Timpanogos Cave NM	138,571	12.0%	0	0.0%	32,353	11.8%	0	0.0%
Timucuan EHP	1,195,171	15.0%	0	0.0%	276,143	22.8%	0	0.0%
Tonto NM	60,534	-4.8%	0	0.0%	9,612	-5.8%	0	0.0%
Tumacacori NHP	40,637	-9.9%	0	0.0%	2,258	-9.9%	0	0.0%
Tuskegee Airmen NHS	58,417	16.1%	0	0.0%	7,302	16.1%	0	0.0%
Tuskegee Institute NHS	31,360	-39.7%	0	0.0%	3,077	-42.5%	0	0.0%
Tuzigoot NM	106,250	3.3%	240	0.0%	6,641	3.3%	5	0.0%
Ulysses S. Grant NHS	40,703	-11.4%	0	0.0%	5,088	-11.4%	0	0.0%
Upper Delaware S&RR	258,311	-9.2%	2,130	0.0%	86,154	-6.2%	45	0.0%
Valley Forge NHP	1,449,228	13.6%	5,245,812	-2.4%	243,788	13.4%	87,430	-2.4%
Vanderbilt Mansion NHS	380,460	5.6%	0	0.0%	38,970	2.6%	0	0.0%
Vicksburg NMP	584,105	5.2%	0	0.0%	104,290	5.8%	0	0.0%
Vietnam Veterans MEM	4,437,771	4.6%	0	0.0%	184,907	4.6%	0	0.0%
Virgin Islands NP	415,847	-11.3%	281,864	-6.8%	213,122	-11.3%	6,610	-8.6%
Voyageurs NP	222,429	0.4%	2,580	0.0%	104,058	-1.9%	108	0.0%
Walnut Canyon NM	128,299	26.0%	480	0.0%	13,899	26.0%	20	0.0%
War in the Pacific NHP	271,608	45.2%	251	49.4%	24,915	39.8%	11	52.9%
Washington Monument	676,002	0.7%	0	0.0%	56,334	0.7%	0	0.0%

Table 5. 2009 Recreation & Non-Recreation Visits / Visitor Days by Park (continued)

Park Name	Visits				Days			
	Recreation	% Change	Non-Rec	% Change	Recreation	% Change	Non-Rec	% Change
Washita Battlefield NHS	10,527	-27.8%	0	0.0%	877	-27.8%	0	0.0%
Weir Farm NHS	19,386	4.7%	0	0.0%	2,767	1.3%	0	0.0%
Whiskeytown NRA	853,812	26.3%	6,315	0.7%	267,328	22.3%	958	0.2%
White House	616,890	18.9%	0	0.0%	29,454	6.1%	0	0.0%
White Sands NM	471,167	7.4%	363	-92.7%	45,938	-25.7%	281	-94.7%
Whitman Mission NHS	52,605	-1.4%	888	0.0%	4,384	-1.4%	37	0.0%
William Howard Taft NHS	18,802	10.8%	0	0.0%	1,567	10.8%	0	0.0%
Wilson's Creek NB	156,230	29.5%	0	0.0%	26,042	29.4%	0	0.0%
Wind Cave NP ⁴	587,868	2.5%	230,578	1.3%	136,020	-11.4%	6,341	1.3%
Wolf Trap NP for the Performing Arts	466,752	-4.2%	0	0.0%	155,584	-4.2%	0	0.0%
Women's Rights NHP	20,620	-10.7%	1,344	0.0%	1,449	-11.7%	56	0.0%
World War II Memorial	4,118,528	-0.8%	0	0.0%	171,605	-0.8%	0	0.0%
World War II Valor in the Pacific NM	1,276,868	-9.3%	5,460	-2.4%	212,811	-9.3%	910	-2.4%
Wrangell-St. Elias NP & PRES	59,966	-8.7%	0	0.0%	229,871	-8.7%	0	0.0%
Wright Brothers NMEM	476,291	-9.7%	2,190	0.0%	39,691	-9.7%	91	0.0%
Wupatki NM	233,284	-2.5%	6,531	0.0%	38,887	-2.4%	327	0.0%
Yellowstone NP	3,295,187	7.5%	856,988	-2.5%	5,846,481	7.2%	40,509	-2.5%
Yosemite NP	3,737,472	8.9%	141,586	8.8%	5,525,975	3.2%	302,112	8.0%
Yukon-Charley Rivers NPRES	6,432	30.1%	0	0.0%	32,196	-10.2%	0	0.0%
Zion NP	2,735,402	1.7%	21,900	0.0%	1,586,939	2.3%	456	0.0%
NPS Total	285,579,941	3.9%	160,758,738	-0.7%	104,306,930	3.1%	6,978,714	0.5%

Figure 4. Average Number of Visitors Per Day to NPS Units, 2009

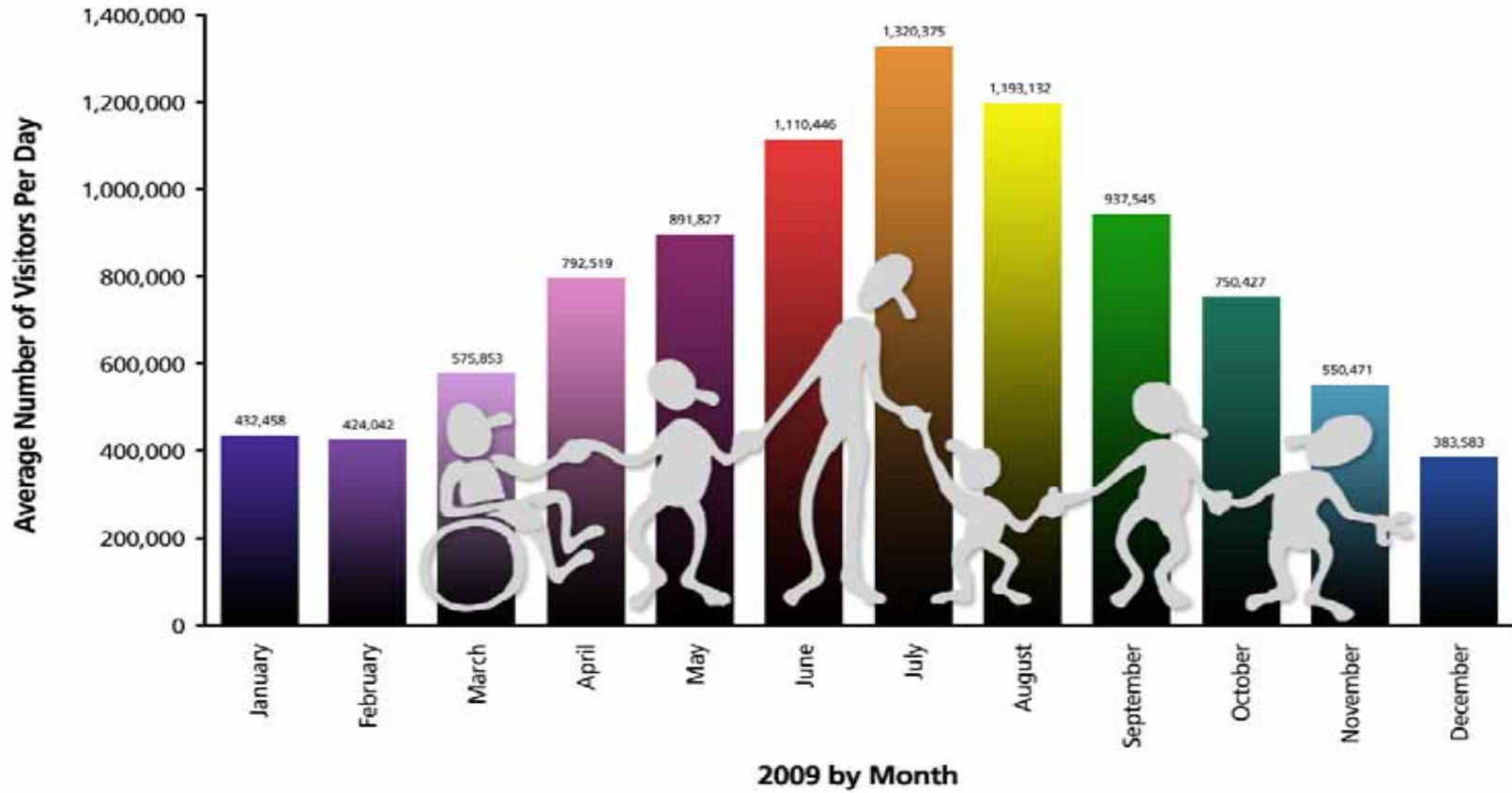


Table 6. 2009 Overnight Stays by Park

Park Name	Concessioner		NPS Campgrounds		Back-country	Misc.	Non-Rec	Total
	Lodging	Campgrounds	Tents	RV's				
Acadia NP	0	0	105,042	22,755	1,037	7,212	0	136,046
Amistad NRA	0	0	908	28,235	2,949	113	0	32,205
Aniakchack NM & PRES	0	0	0	0	0	0	21	21
Apostle Islands NL	0	0	0	0	15,766	11,823	0	27,589
Arches NP	0	0	30,542	16,411	808	6,513	0	54,274
Assateague Island NS	0	0	51,779	23,404	2,063	35,435	0	112,681
Badlands NP	5,874	0	25,388	12,232	1,410	1,351	0	46,255
Bandelier NM	0	0	5,850	3,736	591	3,760	0	13,937
Bering Land Bridge NPRES	0	0	0	0	856	0	1130	1,986
Big Bend NP	47,715	8,807	38,702	24,039	20,727	30,626	0	17,0616
Big Cypress NPRES	0	0	5,495	10,930	12,600	0	0	2,9025
Big South Fork NRA	5,709	0	7,799	31,842	19,301	4,769	0	69,420
Big Thicket NPRES	0	0	0	0	2,722	0	0	2,722
Bighorn Canyon NRA	0	0	4,325	9,143	785	0	0	14,253
Biscayne NP	0	0	934	0	0	7,383	0	8,317
Black Canyon of the Gunnison NP	0	0	7,341	5,771	1,412	0	0	14,524
Blue Ridge PKWY	50,112	0	57,910	37,702	2,598	1,294	0	149,616
Bryce Canyon NP	52,180	0	37,822	56,155	1,824	1,984	0	149,965
Buck Island Reef NM	0	0	0	0	0	3,920	0	3,920
Buffalo NR	4,791	0	56,338	13,085	31,957	6,322	0	112,493
Canaveral NS	0	0	0	0	2,081	0	0	2,081
Canyon de Chelly NM	29,172	0	8,967	14,886	1,230	859	0	55,114
Canyonlands NP	0	0	14,424	7,486	62,595	5,528	0	90,033
Cape Cod NS	4,163	0	0	0	0	18,399	0	22,562
Cape Hatteras NS	0	0	55,318	25,721	0	5,358	368	86,765
Cape Krusenstern NM	0	0	0	0	662	0	1113	1,775
Cape Lookout NS	27,972	0	0	0	8,841	0	0	36,813
Capitol Reef NP	0	0	14,526	17,710	1,453	1,800	0	35,489
Carlsbad Caverns NP	0	0	0	0	114	0	0	114
Catoctin Mountain Park	0	0	6,233	1,099	166	28,896	0	36,394
Cedar Breaks NM	0	0	572	338	0	0	0	910
Chaco Culture NHP ⁶	0	0	3,102	1,359	0	305	0	4,766
Channel Islands NP	0	0	0	0	20,197	16,437	19029	55,663
Chesapeake & Ohio Canal NHP ⁴	0	0	4,770	0	0	0	0	4,770
Chickamauga & Chattanooga NMP	0	0	0	0	0	1,951	0	1,951
Chickasaw NRA	0	0	39,126	23,906	0	9,300	0	72,332
Chiricahua NM	0	0	3,957	4,365	0	675	0	8,997
Colorado NM	0	0	8,883	7,549	154	0	0	16,586
Congaree NP	0	0	0	0	861	3,117	0	3,978
Crater Lake NP	31,133	41,992	5,076	0	1,852	0	0	80,053
Craters of the Moon NM	0	0	5,392	7,475	113	1,170	0	14,150
Cumberland Gap NHP	0	0	4,970	9,530	715	1,200	0	16,415
Cumberland Island NS	0	0	11,512	0	5,575	0	0	17,087
Curecanti NRA	0	0	15,924	40,128	0	919	0	56,971
Cuyahoga Valley NP	1,747	0	0	0	0	546	0	2,293

Table 6. 2009 Overnight Stays by Park (continued)

Park Name	Concessioner		NPS Campgrounds		Back-country	Misc.	Non-Rec	Total
	Lodging	Camp-grounds	Tents	RV's				
Death Valley NP	47,712	4,510	55,847	102,113	0	2,773	0	212,955
Delaware Water Gap NRA	0	18,438	0	0	53,352	37,974	0	109,764
Denali NP & PRES	0	0	18,857	39,920	29,855	1,226	0	89,858
Devils Postpile NM	0	0	3,792	1,352	0	0	0	5,144
Devils Tower NM	0	0	7,013	6,847	0	0	0	13,860
Dinosaur NM	0	0	11,076	6,293	27,514	0	0	44,883
Dry Tortugas NP	0	0	3,394	0	0	8,736	873	13,003
El Malpais NM	0	0	0	0	461	0	0	461
El Morro NM	0	0	2,068	1,055	0	0	0	3,123
Everglades NP	0	0	9,306	10,694	13,062	187	0	33,249
Fire Island NS	0	3,385	0	0	692	34,658	0	38,735
Fort Donelson NB	0	0	0	0	0	205	0	205
Fort Necessity NB	0	0	0	0	0	710	0	710
Fort Pulaski NM	0	0	0	0	0	10	0	10
Fort Sumter NM	0	0	0	0	0	5	0	5
Gates of the Arctic NP & PRES	0	0	0	0	4,638	0	0	4,638
Gateway NRA	0	0	0	0	0	8,933	0	8,933
Gauley River NRA	0	0	2,191	2,547	0	0	0	4,738
Gettysburg NMP ⁴	0	0	0	0	0	23,993	0	23,993
Glacier Bay NP & PRES	7,132	0	389	0	4,541	203	4,370	16,635
Glacier NP	129,517	0	101,408	106,332	40,855	1,507	0	379,619
Glen Canyon NRA ⁹	134,111	90,276	5,705	3,935	55,036	1,291,929	0	1,580,992
Golden Gate NRA ⁴	68,308	0	2,936	0	782	6,084	0	78,110
Grand Canyon NP	645,106	55,538	148,065	102,273	276,150	42,707	0	1,269,839
Grand Portage NM	0	0	0	0	60	0	0	60
Grand Teton NP	199,274	318,239	92	904	30,731	3,118	0	552,358
Great Basin NP	0	0	16,295	9,817	445	3,431	0	29,988
Great Sand Dunes NP & PRES	0	0	29,028	13,498	2,355	6,411	0	51,292
Great Smoky Mountains NP	10,984	0	154,852	134,115	79,182	21,699	0	400,832
Greenbelt Park	0	0	13,245	8,175	0	1,756	0	23,176
Guadalupe Mountains NP	0	0	10,052	4,947	2,405	1,672	0	19,076
Guilford Courthouse NMP	0	0	0	0	0	9	0	9
Gulf Islands NS ⁶	0	0	13,382	9,123	1,133	3,631	1,332	28,601
Haleakala NP	0	0	11,141	0	1,671	4,419	0	17,231
Hawaii Volcanoes NP	23,981	0	10,094	492	5,236	74,367	0	114,170
Hot Springs NP	0	0	4,597	5,018	0	0	0	9,615
Hovenweep NM	0	0	894	734	0	0	0	1,628
Indiana Dunes NL	0	0	18,690	4,241	0	5,186	0	28,117
Isle Royale NP	5,948	327	4,551	0	28,864	2,831	343	42,864
John D. Rockefeller, Jr. MEM PKWY	15,402	10,529	0	0	2,558	0	0	28,489
John Day Fossil Beds NM	0	0	0	0	0	275	0	275
Joshua Tree NP	0	0	159,456	37,821	5,592	63,357	0	266,226
Katmai NP & PRES	2,368	0	1,993	0	383	0	0	4,744
Kenai Fjords NP	0	0	1,146	0	953	0	0	2,099
Kings Canyon NP	40,126	0	77,583	32,897	14,309	17,163	0	182,078
Kings Mountain NMP	0	0	0	0	87	0	0	87
Klondike Gold Rush NHP Alaska ³	0	0	1,370	0	3,636	0	0	5,006

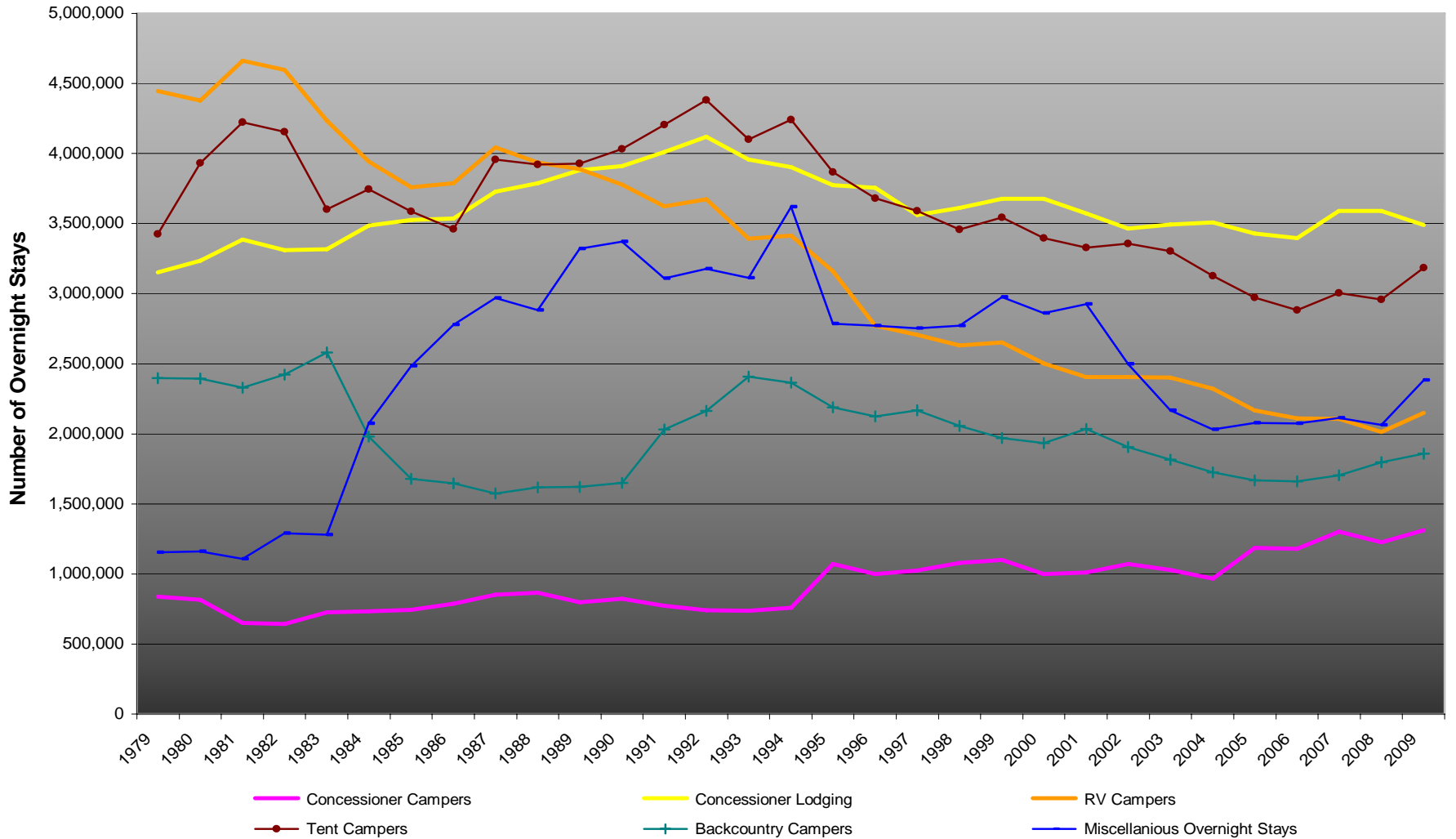
Table 6. 2009 Overnight Stays by Park (continued)

Park Name	Concessioner		NPS Campgrounds		Back-country	Misc.	Non-Rec	Total
	Lodging	Campgrounds	Tents	RV's				
Kobuk Valley NP	0	0	0	0	818	0	1,148	1,966
Lake Chelan NRA	5,712	0	0	0	632	9,705	0	16,049
Lake Clark NP & PRES	0	0	0	0	3,321	0	0	3,321
Lake Mead NRA	26,696	163,112	120,697	153,616	196,480	145,925	178,271	984,797
Lake Meredith NRA	0	0	7,331	30,075	20	180	0	37,606
Lake Roosevelt NRA ⁵	6,548	3,544	54,841	57,998	1,778	15,338	0	140,047
Lassen Volcanic NP	5,204	0	53,856	22,590	5,798	11,483	0	98,931
Lava Beds NM	0	0	7,739	2,339	0	76	0	10,154
Mammoth Cave NP	31,798	0	36,668	12,604	5,737	2,069	0	88,876
Mesa Verde NP	42,051	0	24,657	22,510	0	3,220	0	92,438
Mojave NPRES	0	0	1,031	1,149	0	0	0	2,180
Moore's Creek NB	0	0	0	0	481	0	0	481
Mount Rainier NP	39,136	0	59,032	22,561	43,083	5,627	0	169,439
Natchez Trace PKWY	0	0	6,360	12,711	0	0	0	19,071
Natural Bridges NM	0	0	4,041	2,365	0	0	0	6,406
Navajo NM	0	0	1,525	925	230	43	0	2,723
New River Gorge NR	0	0	7,157	3,839	0	0	0	10,996
Noatak NPRES	0	0	0	0	1,164	0	1,057	2,221
North Cascades NP	0	0	0	0	14,558	88	0	14,646
Obed W&SR	0	0	1,422	0	222	0	0	1,644
Olympic NP	66,338	7,934	105,808	79,556	82,085	852	0	342,573
Oregon Caves NM	6,322	0	0	0	0	0	0	6,322
Organ Pipe Cactus NM	0	0	3,043	15,788	494	57	0	19,382
Ozark NSR	1,601	0	57,532	17,732	17,165	45,209	0	139,239
Padre Island NS	0	0	21,503	33,964	13,646	588	0	69,701
Perry's Victory & Intl. Peace MEM	0	0	0	0	0	3,058	0	3,058
Petrified Forest NP	0	0	0	0	276	0	5,458	5,734
Pictured Rocks NL	0	0	11,738	2,991	13,688	0	0	28,417
Pinnacles NM	0	9,524	0	0	0	0	0	9,524
Point Reyes NS	8,893	4,239	0	0	28,098	0	0	41,230
Prince William Forest Park	0	20,039	4,206	374	317	32,290	0	57,226
Redwood NP	5,705	0	1,541	0	1,338	5,977	0	14,561
Rio Grande W&SR	0	0	0	0	4,661	0	0	4,661
Rocky Mountain NP	0	0	83,925	45,957	31,912	9,077	0	170,871
Ross Lake NRA	7,637	0	26,685	13,025	14,751	1,713	0	63,811
Saguaro NP	0	0	0	0	1,599	0	0	1,599
Saint Croix NSR	0	0	0	0	88,928	0	0	88,928
San Francisco Maritime NHP	0	0	0	0	0	11,208	0	11,208
Santa Monica Mountains NRA	0	0	0	0	144	0	0	144
Sequoia NP	64,481	0	121,930	29,952	36,238	6,506	0	259,107
Shenandoah NP	109,325	0	97,755	47,037	39,083	0	0	293,200
Sleeping Bear Dunes NL	0	0	44,608	49,107	18,506	0	0	112,221
Theodore Roosevelt NP	0	0	10,687	14,174	798	1,155	0	26,814
Valley Forge NHP	0	0	0	0	0	1,500	0	1,500
Virgin Islands NP	19,141	19,751	0	0	0	62,448	1,410	102,750
Voyageurs NP	3,888	0	0	0	17,776	27,307	0	48,971
Whiskeytown NRA	0	20,786	0	2,164	4,406	22,268	0	49,624

Table 6. 2009 Overnight Stays by Park (continued)

Park Name	Concessioner		NPS Campgrounds		Back-country	Misc.	Non-Rec	Total
	Lodging	Camp-grounds	Tents	RV's				
White Sands NM	0	0	0	0	1,751	0	0	1,751
Wind Cave NP	0	0	1,035	905	163	0	0	2,103
Yellowstone NP	564,911	509,377	83,465	64,637	39,736	13,521	0	1,275,647
Yosemite NP	814,521	0	481,492	212,244	158,233	34,379	0	1,700,869
Yukon-Charley Rivers NPRES	0	0	0	0	15,562	0	0	15,562
Zion NP	70,278	0	101,510	73,146	41,933	19,726	0	306,593
NPS Total	3,490,723	1,310,347	3,184,255	2,150,17	1,860,162	2,382,723	215,923	14,594,303

Figure 5. Overnight Stays by Category and Year, 1979-2009



*The number of National Park Service Tent and RV campers have been reduced due to the transfer of NPS managed campgrounds to Concessioner managed campgrounds.

Table 7. 2009 Affiliated and Non-Reporting Areas

Affiliated Areas	Areas Not Reporting Public Use
Aleutian World War II NHS	African Burial Ground NM
American Memorial Park	Alagnak Wild River
Benjamin Franklin NMEM	Appalachian NST
Chicago Portage NHS	Boston Harbor Islands NRA
Chimney Rock NHS	Brices Cross Roads NBS
Fallen Timbers Battlefield and Fort Miamis NHS	Carter G. Woodson House NHS
Father Marquette NMEM	Cedar Creek and Belle Grove NHP
Gloria Dei (Old Swedes') Church NHS	Constitution Gardens ³
Green Springs Historic District	Delaware NSR
Historic Camden Revolutionary War Site	Ebey's Landing NHR
Ice Age National Scientific Reserve	Great Egg Harbor S&RR
International Peace Garden	Hohokam Pima NM
Inupiat Heritage Center	Keweenaw NHP
Jamestown NHS	Minidoka Internment NHS
Kate Mullany NHS	Mississippi NRRRA
Lower East Side Tenement NHS	Natchez Trace NST
New Jersey Coastal Heritage Trail Route	National Mall
Oklahoma City NMEM	Potomac Heritage NST
Pinelands NRES	Port Chicago Naval Magazine NMEM
Red Hill Patrick Henry NM	Poverty Point NM
Roosevelt Campobello International Park	Rosie the Riveter/ World War II Home Front NHP
Sewall-Belmont House NHS	Saint Croix Island International HS
Thomas Cole NHS	Sand Creek Massacre NHS
Touro Synagogue NHS	Tupelo NB
	Virgin Islands Coral Reef NM
	Yucca House NM

Table 8. 2009 Recreation Visits/Visitor Days by State

Parks By State		Recreation Visits	Percent Change	Recreation Visitor Days	Percent Change
ALABAMA					
	Horseshoe Bend NMP	72,232	42.40%	14,399	37.20%
	Little River Canyon NPRES	189,251	-4.30%	19,212	-11.60%
	Natchez Trace PKWY	415,405	3.30%	139,692	3.00%
	Russell Cave NM	24,087	-33.80%	3,302	-31.90%
	Tuskegee Airmen NHS	58,417	16.10%	7,302	16.10%
	Tuskegee Institute NHS	31,360	-39.70%	3,077	-42.50%
	Subtotal Alabama	790,752	0.20%	186,984	1.40%
ALASKA					
	Aniakchak NM & PRES	14	40.00%	0	0.00%
	Bering Land Bridge NPRES	1,054	3.40%	264	3.40%
	Cape Krusenstern NM	1,810	14.90%	307	27.20%
	Denali NP & PRES	358,041	-17.20%	456,911	-15.30%
	Gates of the Arctic NP & PRES	9,975	-12.50%	9,671	-25.60%
	Glacier Bay NP & PRES	438,361	4.60%	453,816	2.20%
	Katmai NP & PRES ¹⁰	43,035	440.00%	25,642	411.00%
	Kenai Fjords NP	218,358	-19.80%	57,418	-23.00%
	Klondike Gold Rush NHP Alaska ³	880,512	-5.90%	321,004	-2.20%
	Kobuk Valley NP	1,879	20.10%	406	28.10%
	Lake Clark NP & PRES	9,711	42.80%	7,707	41.80%
	Noatak NPRES	2,474	15.20%	2,079	12.40%
	Sitka NHP	246,866	2.30%	12,732	2.90%
	Wrangell-St. Elias NP & PRES	59,966	-8.70%	229,871	-8.70%
	Yukon-Charley Rivers NPRES	6,432	30.10%	32,196	-10.20%
	Subtotal Alaska	2,278,488	-5.2%	1,610,023	-6.00%
AMERICAN SAMOA					
	National Park of American Samoa ⁷	3,242	-12.00%	541	-11.90%
	Subtotal American Samoa	3,242	-12.00%	541	-11.90%

Table 8. 2009 Recreation Visits/Visitor Days by State (continued)

Parks By State		Recreation Visits	Percent Change	Recreation Visitor Days	Percent Change
ARIZONA					
	Canyon de Chelly NM	826,425	-1.10%	468,326	-1.00%
	Casa Grande Ruins NM	76,350	3.50%	8,667	3.50%
	Chiricahua NM	60,851	7.60%	24,673	2.30%
	Coronado NMEM	106,409	16.90%	8,941	20.40%
	Fort Bowie NHS	9,641	-4.50%	1,607	-4.50%
	Glen Canyon NRA9	156,828	0.70%	248,544	-0.90%
	Grand Canyon NP	4,348,068	-1.70%	5,649,689	-2.00%
	Hubbell Trading Post NHS	99,267	60.20%	4,274	60.20%
	Lake Mead NRA	1,917,172	0.90%	1,323,073	-2.10%
	Montezuma Castle NM	601,465	-0.40%	50,122	-0.40%
	Navajo NM	77,901	5.10%	15,107	5.70%
	Organ Pipe Cactus NM	330,064	-3.00%	61,097	0.30%
	Petrified Forest NP	631,613	16.20%	129,355	13.50%
	Pipe Spring NM	49,433	4.20%	4,119	4.20%
	Saguaro NP	665,234	-4.80%	80,458	-9.20%
	Sunset Crater Volcano NM	187,397	-10.50%	19,521	-10.50%
	Tonto NM	60,534	-4.80%	9,612	-5.80%
	Tumacacori NHP	40,637	-9.90%	2,258	-9.90%
	Tuzigoot NM	106,250	3.30%	6,641	3.30%
	Walnut Canyon NM	128,299	26.00%	13,899	26.00%
	Wupatki NM	233,284	-2.50%	38,887	-2.40%
	Subtotal Arizona	10,713,122	0.30%	8,168,867	-1.70%
ARKANSAS					
	Arkansas Post NMEM	32,160	-25.40%	4,020	-25.40%
	Buffalo NR	1,522,586	8.30%	746,393	17.10%
	Fort Smith NHS	63,540	-15.50%	7,043	-15.50%
	Hot Springs NP	1,284,707	3.80%	238,049	3.60%
	Little Rock Central High School NHS	60,103	42.10%	5,009	42.10%
	Pea Ridge NMP	68,746	0.40%	11,458	0.40%
	Subtotal Arkansas	3,031,842	5.50%	1,011,970	13.00%

Table 8. 2009 Recreation Visits/Visitor Days by State (continued)

Parks By State		Recreation Visits	Percent Change	Recreation Visitor Days	Percent Change
CALIFORNIA					
	Cabrillo NM	767,687	8.80%	95,680	9.10%
	Channel Islands NP	348,745	5.00%	279,285	-1.20%
	Death Valley NP	828,574	-5.00%	571,316	-0.60%
	Devils Postpile NM	110,212	-17.80%	39,857	-12.00%
	Eugene O'Neill NHS	3,783	48.70%	913	6.90%
	Fort Point NHS	1,385,134	-0.40%	65,562	-0.10%
	Golden Gate NRA ⁴	15,036,372	3.30%	2,029,369	10.60%
	John Muir NHS	34,516	20.00%	4,510	19.00%
	Joshua Tree NP	1,304,471	-6.30%	822,177	4.10%
	Kings Canyon NP	609,296	6.00%	1,634,082	8.20%
	Lassen Volcanic NP	365,639	-3.10%	355,948	9.30%
	Lava Beds NM	129,639	8.00%	37,154	5.20%
	Manzanar NHS	89,190	13.70%	11,149	13.70%
	Mojave NPRES	528,865	-14.50%	266,613	-14.20%
	Muir Woods NM	779,880	-7.00%	86,632	-7.00%
	Pinnacles NM	171,112	2.50%	68,858	-20.60%
	Point Reyes NS	2,170,646	-3.40%	916,896	-2.20%
	Redwood NP	444,426	12.00%	154,877	11.70%
	San Francisco Maritime NHP	4,152,497	1.60%	363,567	0.70%
	Santa Monica Mountains NRA	501,573	19.60%	82,167	33.00%
	Sequoia NP	965,170	3.80%	2,585,803	4.30%
	Whiskeytown NRA	853,812	26.30%	267,328	22.30%
	Yosemite NP	3,737,472	8.90%	5,525,975	3.20%
	Subtotal California	35,318,711	2.70%	16,265,716	4.20%
COLORADO					
	Bent's Old Fort NHS	28,131	12.50%	4,103	12.50%
	Black Canyon of the Gunnison NP	171,451	7.00%	78,146	4.50%
	Colorado NM	400,266	2.40%	93,008	4.10%
	Curecanti NRA	953,169	-5.40%	342,149	-4.50%
	Dinosaur NM	150,858	1.10%	96,029	-6.60%
	Florissant Fossil Beds NM	64,251	12.70%	6,639	13.60%
	Great Sand Dunes NP & PRES	289,955	5.90%	160,683	10.50%
	Hovenweep NM	12,256	9.60%	3,475	8.30%
	Mesa Verde NP	550,377	-0.20%	345,042	-1.70%
	Rocky Mountain NP	2,822,325	2.40%	1,638,991	-0.70%
	Subtotal Colorado	5,443,039	1.10%	2,768,264	-0.60%

Table 8. 2009 Recreation Visits/Visitor Days by State (continued)

Parks By State		Recreation Visits	Percent Change	Recreation Visitor Days	Percent Change
CONNECTICUT					
	Weir Farm NHS	19,386	4.70%	2,767	1.30%
	Subtotal Connecticut	19,386	4.70%	2,767	1.30%
DISTRICT OF COLUMBIA					
	Chesapeake & Ohio Canal NHP ⁴	3,188,929	20.60%	535,823	19.80%
	Ford's Theatre NHS ⁶	658,271	96.00%	56,036	698.30%
	Franklin Delano Roosevelt MEM	2,591,241	-1.20%	107,969	-1.20%
	Frederick Douglass NHS	43,483	14.90%	3,624	14.90%
	Korean War Veterans Memorial	3,117,046	-14.70%	129,877	-14.70%
	Lincoln Memorial	5,255,570	12.30%	262,107	34.40%
	Mary McLeod Bethune Council House NHS	21,811	23.70%	3,635	23.70%
	National Capital Parks Central ^{3,7}	3,678,876	43.70%	732,944	-24.20%
	National Capital Parks East ³	1,144,991	-1.90%	134,649	-2.70%
	Pennsylvania Avenue NHS	256,874	7.10%	7,064	7.10%
	President's Park ³	1,475,182	25.10%	194,369	30.50%
	Rock Creek Park	2,076,500	0.00%	198,020	-2.00%
	Thomas Jefferson MEM	2,337,868	-1.10%	97,411	-1.10%
	Vietnam Veterans MEM	4,437,771	4.60%	184,907	4.60%
	Washington Monument	676,002	0.70%	56,334	0.70%
	White House	616,890	18.90%	29,454	6.10%
	World War II Memorial	4,118,528	-0.80%	171,605	-0.80%
	Subtotal District of Columbia	35,695,833	7.60%	2,905,826	-0.20%
FLORIDA					
	Big Cypress NPRES	812,207	-0.20%	270,662	9.70%
	Biscayne NP	437,745	-36.20%	126,070	-31.50%
	Canaveral NS	1,001,665	0.70%	212,430	0.50%
	Castillo de San Marcos NM	667,783	7.90%	41,736	7.90%
	De Soto NMEM	246,608	-7.30%	33,908	-7.30%
	Dry Tortugas NP	52,011	-18.70%	55,405	-15.70%
	Everglades NP	900,882	9.60%	300,803	1.10%
	Fort Caroline NMEM	288,606	3.10%	24,051	3.10%
	Fort Matanzas NM	793,253	-2.40%	66,804	-2.80%
	Gulf Islands NS ⁶	3,099,506	101.20%	600,770	92.20%
	Timucuan EHP	1,195,171	15.00%	276,143	22.80%
	Subtotal Florida	9,495,437	19.60%	2,008,782	17.50%

Table 8. 2009 Recreation Visits/Visitor Days by State (continued)

Parks By State		Recreation Visits	Percent Change	Recreation Visitor Days	Percent Change
GEORGIA					
	Andersonville NHS	136,267	-14.60%	22,711	-14.60%
	Chattahoochee River NRA	2,830,655	0.20%	943,551	0.20%
	Chickamauga & Chattanooga NMP	496,224	-0.10%	80,775	1.00%
	Cumberland Island NS	77,588	-6.30%	61,555	-4.10%
	Fort Frederica NM	296,117	19.40%	24,905	19.40%
	Fort Pulaski NM	435,661	23.50%	90,778	23.50%
	Jimmy Carter NHS	69,972	-15.10%	7,446	-18.60%
	Kennesaw Mountain NBP	1,372,228	-3.10%	174,941	-3.40%
	Martin Luther King, Jr. NHS	650,343	-1.30%	82,318	-5.70%
	Ocmulgee NM	110,819	8.00%	13,853	8.00%
	Subtotal Georgia	6,475,874	0.80%	1,502,833	0.40%
GUAM					
	War In the Pacific NHP	271,608	45.20%	24,915	39.80%
	Subtotal Guam	271,608	45.20%	24,915	39.80%
HAWAII					
	Haleakala NP	1,109,104	-6.40%	231,535	-6.90%
	Hawaii Volcanoes NP	1,233,105	-2.90%	700,527	-2.90%
	Kalaupapa NHP	30,654	-49.70%	20,426	-49.70%
	Kaloko Honokohau NHP	166,380	58.70%	19,482	-11.60%
	Pu'uhohola o Honaunau NHP	397,665	-4.10%	33,139	-4.10%
	Pu'ukohola Heiau NHS	99,042	7.00%	4,127	7.00%
	World War II Valor in the Pacific	1,276,868	-9.30%	212,811	-9.30%
	Subtotal Hawaii	4,312,818	-4.90%	1,222,057	-6.40%

Table 8. 2009 Recreation Visits/Visitor Days by State (continued)

IDAHO					
	City of Rocks NRES	96,649	12.50%	28,190	12.50%
	Craters of the Moon NM	194,046	-14.60%	48,914	-5.60%
	Hagerman Fossil Beds NM	27,263	17.70%	3,408	17.70%
	Nez Perce NHP	176,238	-15.00%	18,793	-37.10%
	Subtotal Idaho	464,196	-9.10%	99,305	-9.50%
ILLINOIS					
	Lincoln Home NHS	464,074	38.30%	52,963	113.40%
	Subtotal Illinois	464,074	38.30%	52,963	113.40%
INDIANA					
	George Rogers Clark NHP	103,284	-9.20%	11,534	-9.20%
	Indiana Dunes NL	1,944,568	6.10%	452,063	5.40%
	Lincoln Boyhood NMEM	182,172	23.80%	17,079	23.80%
	Subtotal Indiana	2,230,024	6.50%	480,675	5.50%
IOWA					
	Effigy Mounds NM	78,177	13.80%	16,287	13.80%
	Herbert Hoover NHS	162,886	14.20%	13,574	14.20%
	Subtotal Iowa	241,063	14.10%	29,861	14.00%
KANSAS					
	Brown V. Board of Education NHS	19,228	13.40%	3,205	13.40%
	Fort Larned NHS	27,443	27.70%	4,574	27.70%
	Fort Scott NHS	28,544	12.70%	3,568	12.70%
	Nicodemus NHS	2,978	22.40%	248	22.40%
	Tallgrass Prairie NPRES	23,713	18.10%	3,952	18.10%
	Subtotal Kansas	101,906	18.10%	15,547	18.50%
KENTUCKY					
	Abraham Lincoln Birthplace NHP ¹	221,111	10.30%	18,426	10.30%
	Big South Fork NRA	281,566	1.60%	176,650	0.80%
	Cumberland Gap NHP	821,807	4.70%	137,433	16.80%
	Mammoth Cave NP	503,856	12.90%	273,623	11.80%
	Subtotal Kentucky	1,828,340	7.00%	606,131	9.30%
LOUISIANA					
	Cane River Creole NHP	27,411	11.50%	4,568	11.50%
	Jean Lafitte NHP & PRES	335,075	-1.40%	44,786	1.90%
	New Orleans Jazz NHP	80,828	21.10%	10,545	13.00%
	Subtotal Louisiana	443,314	2.80%	59,899	4.40%

Table 8. 2009 Recreation Visits/Visitor Days by State (continued)

MAINE					
	Acadia NP	2,227,698	7.30%	953,963	7.60%
	Subtotal Maine	2,227,698	7.30%	953,963	7.60%
MARYLAND					
	Antietam NB	378,966	7.50%	68,161	8.90%
	Assateague Island NS	702,787	5.90%	516,562	9.70%
	Catoctin Mountain Park	440,294	-5.70%	154,792	-3.20%
	Chesapeake & Ohio Canal NHP ⁴	337,651	20.60%	56,734	19.80%
	Clara Barton NHS	10,986	22.00%	916	22.00%
	Fort McHenry NM & HS	605,870	1.30%	75,734	1.30%
	Fort Washington Park	339,370	-29.90%	109,760	-30.30%
	Greenbelt Park	188,043	14.60%	68,674	18.60%
	Hampton NHS	39,334	11.60%	4,917	11.50%
	Monocacy NB	34,553	10.50%	4,319	10.50%
	National Capital Parks East ³	127,221	-1.90%	14,961	-2.70%
	Piscataway Park	234,186	-27.80%	36,353	-28.90%
	Thomas Stone NHS	6,268	9.60%	261	9.60%
	Subtotal Maryland	3,445,530	-2.80%	1,112,144	0.50%
MASSACHUSETTS					
	Adams NHP	253,656	5.00%	20,280	11.30%
	Boston African American NHS	298,519	6.50%	7,723	3.50%
	Boston NHP	2,155,026	-3.50%	161,104	-3.00%
	Cape Cod NS	4,311,949	-7.20%	702,077	-7.50%
	Frederick Law Olmsted NHS ⁶	5,007	68.60%	835	68.60%
	John F. Kennedy NHS	16,333	61.90%	681	61.90%
	Longfellow NHS	39,065	-34.70%	4,883	-34.70%
	Lowell NHP	565,960	-1.50%	71,552	-1.00%
	Minute Man NHP	1,096,024	2.70%	137,003	2.70%
	New Bedford Whaling NHP	279,803	-0.60%	11,979	0.80%
	Salem Maritime NHS	723,088	-15.60%	32,788	-55.70%
	Saugus Iron Works NHS ⁶	10,529	-15.30%	1,316	-15.30%
	Springfield Armory NHS	17,779	2.40%	2,963	2.40%
	Subtotal Massachusetts	9,772,738	-4.90%	1,155,184	-8.00%
MICHIGAN					
	Isle Royale NP	14,653	4.40%	86,676	-7.70%
	Pictured Rocks NL	448,215	12.40%	192,030	9.70%
	Sleeping Bear Dunes NL	1,165,836	15.60%	550,867	10.30%
	Subtotal Michigan	1,628,704	14.60%	829,573	7.90%

Table 8. 2009 Recreation Visits/Visitor Days by State (continued)

MINNESOTA					
	Grand Portage NM	76,025	-1.70%	13,556	-1.00%
	Pipestone NM	69,539	-13.20%	14,487	-13.20%
	Saint Croix NSR	282,163	7.80%	294,467	6.80%
	Voyageurs NP	222,429	0.40%	104,058	-1.90%
	Subtotal Minnesota	650,156	1.50%	426,569	3.50%
MISSISSIPPI					
	Gulf Islands NS ⁶	1,033,169	101.20%	200,257	92.20%
	Natchez NHP	218,126	-6.20%	32,416	-5.20%
	Natchez Trace PKWY	4,747,490	3.30%	1,596,482	3.00%
	Vicksburg NMP	584,105	5.20%	104,290	5.80%
	Subtotal Mississippi	6,582,890	11.60%	1,933,444	8.20%
MISSOURI					
	George Washington Carver NM	38,899	-3.70%	4,214	-3.70%
	Harry S Truman NHS	28,384	-8.00%	1,821	-6.90%
	Jefferson NEM	2,360,109	20.70%	786,702	20.70%
	Ozark NSR	1,308,718	5.20%	304,063	10.80%
	Ulysses S. Grant NHS	40,703	-11.40%	5,088	-11.40%
	Wilson's Creek NB	156,230	29.50%	26,042	29.40%
	Subtotal Missouri	3,933,043	14.50%	1,127,930	17.70%
MONTANA					
	Big Hole NB	49,822	-9.10%	6,561	-1.50%
	Bighorn Canyon NRA	110,858	15.00%	34,991	10.30%
	Glacier NP	2,031,348	12.40%	2,085,923	13.90%
	Grant-Kohrs Ranch NHS	20,099	20.80%	2,060	20.80%
	Little Bighorn Battlefield NM	302,811	7.30%	25,237	7.20%
	Yellowstone NP	1,680,545	7.50%	2,981,705	7.20%
	Subtotal Montana	4,195,484	9.80%	5,136,477	9.80%
NEBRASKA					
	Agate Fossil Beds NM	12,694	2.20%	2,754	2.50%
	Homestead NM of America	71,301	0.00%	9,991	0.30%
	Niobrara NSR	68,058	-3.10%	44,020	-1.10%
	Scotts Bluff NM	121,391	8.50%	19,220	8.50%
	Subtotal Nebraska	273,444	2.90%	75,986	1.50%
NEVADA					
	Great Basin NP	84,974	22.70%	79,919	17.90%
	Lake Mead NRA	5,751,517	0.90%	3,969,218	-2.10%
	Subtotal Nevada	5,836,491	1.10%	4,049,137	-1.80%

Table 8. 2009 Recreation Visits/Visitor Days by State (continued)

NEW HAMPSHIRE					
	Saint-Gaudens NHS	34,558	15.90%	5,667	15.80%
	Subtotal New Hampshire	34,558	15.90%	5,667	15.80%
NEW JERSEY					
	Delaware Water Gap NRA	3,701,251	1.70%	1,363,638	1.40%
	Gateway NRA	1,802,104	-4.50%	447,337	-5.40%
	Morristown NHP	298,060	7.50%	71,253	10.00%
	Thomas Edison NHP ¹	27,061	237.10%	1,873	-55.90%
	Subtotal New Jersey	5,828,477	0.30%	1,884,101	-0.20%
NEW MEXICO					
	Aztec Ruins NM	38,234	-1.20%	4,779	-1.20%
	Bandelier NM	212,544	2.40%	74,133	6.50%
	Capulin Volcano NM	50,935	12.70%	5,927	12.30%
	Carlsbad Caverns NP	432,639	8.10%	141,337	7.30%
	Chaco Culture NHP ⁶	37,376	0.50%	22,253	-36.60%
	El Malpais NM	123,290	7.10%	41,789	6.60%
	El Morro NM	48,245	6.80%	12,988	7.30%
	Fort Union NM	11,070	20.70%	1,089	20.70%
	Gila Cliff Dwellings NM	43,016	10.30%	3,585	10.30%
	Pecos NHP	34,522	5.60%	3,488	5.90%
	Petroglyph NM	118,688	1.80%	19,781	1.80%
	Salinas Pueblo Missions NM	37,848	21.10%	6,513	19.50%
	White Sands NM	471,167	7.40%	45,938	-25.70%
	Subtotal New Mexico	1,659,574	6.60%	383,598	-2.10%

Table 8. 2009 Recreation Visits/Visitor Days by State (continued)

NEW YORK					
	Castle Clinton NM	4,080,152	9.50%	171,302	9.00%
	Eleanor Roosevelt NHS	54,393	1.40%	6,799	1.40%
	Federal Hall NMEM	204,880	-3.60%	13,518	34.60%
	Fire Island NS	569,667	-5.80%	169,369	-8.00%
	Fort Stanwix NM	93,170	30.70%	11,647	30.70%
	Gateway NRA	7,208,418	-4.50%	1,789,346	-5.40%
	General Grant NMEM	100,874	10.30%	4,203	-6.50%
	Governors Island NM	325,840	58.90%	54,307	58.90%
	Hamilton Grange NMEM ⁶	150	-78.30%	25	-76.00%
	Home of Franklin D. Roosevelt NHS	123,033	-0.80%	18,394	-1.60%
	Martin Van Buren NHS	23,216	9.40%	2,091	9.70%
	Sagamore Hill NHS	53,800	0.10%	11,209	0.10%
	Saint Paul's Church NHS	14,432	-0.70%	1,596	-0.40%
	Saratoga NHP	89,366	0.60%	21,944	6.10%
	Statue of Liberty NM	3,829,483	7.70%	1,436,056	7.70%
	Theodore Roosevelt Birthplace NHS	14,390	-22.60%	1,383	-25.20%
	Theodore Roosevelt Inaugural NHS ⁶	11,735	100.00%	2,224	309.50%
	Upper Delaware S&RR	129,156	-9.20%	43,077	-6.20%
	Vanderbilt Mansion NHS	380,460	5.60%	38,970	2.60%
	Women's Rights NHP	20,620	-10.70%	1,449	-11.70%
	Subtotal New York	17,327,234	2.40%	3,798,908	0.70%
NORTH CAROLINA					
	Blue Ridge PKWY	9,880,516	-2.30%	5,125,782	-2.20%
	Cape Hatteras NS	2,282,543	6.30%	880,677	7.70%
	Cape Lookout NS	601,954	23.60%	216,442	9.50%
	Carl Sandburg Home NHS ⁴	83,550	293.50%	10,652	-5.60%
	Fort Raleigh NHS	338,212	8.50%	44,408	8.70%
	Great Smoky Mountains NP	4,176,232	4.90%	2,595,888	5.30%
	Guilford Courthouse NMP	290,368	-18.00%	23,679	-21.40%
	Moores Creek NB	68,864	53.60%	4,308	66.70%
	Wright Brothers NMEM	476,291	-9.70%	39,691	-9.70%
	Subtotal North Carolina	18,198,530	1.20%	8,941,527	1.10%
NORTH DAKOTA					
	Fort Union Trading Post NHS	15,141	31.30%	1,617	34.40%
	Knife River Indian Villages NHS	29,390	18.50%	3,953	23.80%
	Theodore Roosevelt NP	586,928	13.60%	148,965	22.70%
	Subtotal North Dakota	631,459	14.20%	154,534	22.90%

Table 8. 2009 Recreation Visits/Visitor Days by State (continued)

OHIO					
	Cuyahoga Valley NP	2,589,288	-8.40%	585,857	-7.90%
	Dayton Aviation Heritage NHP	58,301	9.40%	6,674	9.50%
	First Ladies NHS	10,466	7.10%	1,744	7.10%
	Hopewell Culture NHP	34,179	21.50%	5,697	21.50%
	James A. Garfield NHS	17,100	-37.30%	2,850	-37.30%
	Perry's Victory & Intl. Peace MEM	154,457	-1.80%	15,053	3.00%
	William Howard Taft NHS	18,802	10.80%	1,567	10.80%
	Subtotal Ohio	2,882,593	-7.60%	619,442	-7.40%
OKLAHOMA					
	Chickasaw NRA	1,238,484	0.60%	381,134	-1.00%
	Washita Battlefield NHS	10,527	-27.80%	877	-27.80%
	Subtotal Oklahoma	1,249,011	0.30%	382,011	-1.00%
OREGON					
	Crater Lake NP	446,516	7.40%	253,445	12.40%
	John Day Fossil Beds NM	130,925	16.30%	12,932	15.60%
	Lewis & Clark NHP	225,846	-1.80%	29,944	-2.60%
	Oregon Caves NM	88,496	20.00%	30,553	14.60%
	Subtotal Oregon	891,783	7.20%	326,873	11.20%
PENNSYLVANIA					
	Allegheny Portage Railroad NHS	118,931	4.30%	13,330	1.60%
	Delaware Water Gap NRA	1,511,779	1.70%	556,979	1.40%
	Edgar Allan Poe NHS	17,463	34.70%	1,455	34.70%
	Eisenhower NHS	64,212	-9.20%	8,562	-9.20%
	Flight 93 NMEM	149,668	10.00%	12,472	10.00%
	Fort Necessity NB	197,271	54.50%	24,829	54.40%
	Friendship Hill NHS	31,454	2.70%	5,876	2.20%
	Gettysburg NMP ⁴	1,013,002	-30.40%	392,994	14.20%
	Hopewell Furnace NHS	53,186	7.80%	5,319	7.80%
	Independence NHP	3,967,694	-2.70%	500,885	-3.00%
	Johnstown Flood NMEM	114,350	-15.50%	10,183	-15.60%
	Steamtown NHS	65,144	-8.40%	15,349	72.60%
	Thaddeus Kosciuszko NMEM	3,357	-14.30%	70	-14.30%
	Upper Delaware S&RR	129,156	-9.20%	43,077	-6.20%
	Valley Forge NHP	1,449,228	13.60%	243,788	13.40%
	Subtotal Pennsylvania	8,885,894	-3.30%	1,835,168	4.60%

Table 8. 2009 Recreation Visits/Visitor Days by State (continued)

PUERTO RICO					
	San Juan NHS	1,069,673	-5.80%	174,861	-3.30%
	Subtotal Puerto Rico	1,069,673	-5.80%	174,861	-3.30%
RHODE ISLAND					
	Roger Williams NMEM	50,397	9.20%	3,542	11.00%
	Subtotal Rhode Island	50,397	9.20%	3,542	11.00%
SOUTH CAROLINA					
	Charles Pinckney NHS	43,447	-1.40%	7,241	-1.40%
	Congaree NP	122,970	17.20%	37,372	13.20%
	Cowpens NB	224,394	-4.60%	14,678	-5.90%
	Fort Sumter NM	785,604	5.50%	156,166	5.30%
	Kings Mountain NMP	277,576	8.90%	24,943	7.70%
	Ninety Six NHS	50,689	-11.50%	5,280	-11.50%
	Subtotal South Carolina	1,504,680	4.40%	245,680	5.30%
SOUTH DAKOTA					
	Badlands NP	933,918	10.40%	349,778	13.80%
	Jewel Cave NM	129,595	29.00%	22,313	24.20%
	Minuteman Missile NHS	36,777	20.10%	2,273	16.40%
	Missouri National Recreational River	186,313	14.90%	4,654	15.60%
	Mount Rushmore NMEM	2,260,192	26.30%	247,992	26.30%
	Wind Cave NP ⁴	587,868	2.50%	136,020	-11.40%
	Subtotal South Dakota	4,134,663	18.10%	763,030	12.00%
TENNESSEE					
	Andrew Johnson NHS	63,296	-8.80%	3,027	-5.40%
	Big South Fork NRA	405,181	1.60%	254,203	0.80%
	Chickamauga & Chattanooga NMP	496,224	-0.10%	80,775	1.00%
	Fort Donelson NB	203,456	-2.50%	11,702	0.70%
	Great Smoky Mountains NP	5,315,205	4.90%	3,303,857	5.30%
	Natchez Trace PKWY	771,467	3.30%	259,428	3.00%
	Obed W&SR	212,933	10.80%	73,574	10.50%
	Shiloh NMP	404,134	13.10%	57,269	30.80%
	Stones River NB	189,952	-4.50%	18,525	-5.20%
	Subtotal Tennessee	8,061,848	4.20%	4,062,361	5.10%

Table 8. 2009 Recreation Visits/Visitor Days by State (continued)

TEXAS					
	Alibates Flint Quarries NM	2,918	27.00%	608	27.00%
	Amistad NRA	2,573,966	30.00%	1,598,029	29.40%
	Big Bend NP	363,905	0.40%	705,136	1.40%
	Big Thicket NPRES	100,509	7.30%	34,460	9.90%
	Chamizal NM	215,852	9.10%	23,606	3.60%
	Fort Davis NHS	50,968	3.40%	6,371	3.40%
	Guadalupe Mountains NP	198,882	21.50%	38,864	6.30%
	Lake Meredith NRA	1,080,644	23.50%	251,633	21.90%
	Lyndon B. Johnson NHP ⁴	98,218	5.40%	14,421	-17.90%
	Padre Island NS	642,163	1.00%	372,117	6.00%
	Palo Alto Battlefield NHP ¹	41,599	-7.60%	6,933	-7.60%
	Rio Grande W&SR	947	-41.00%	7,902	-27.20%
	San Antonio Missions NHP	1,567,667	20.30%	213,853	23.40%
	Subtotal Texas	6,938,238	19.50%	3,273,932	17.20%
UTAH					
	Arches NP	996,312	7.30%	357,622	7.10%
	Bryce Canyon NP	1,216,377	16.60%	764,777	15.60%
	Canyonlands NP	436,241	-0.10%	323,239	-3.50%
	Capitol Reef NP	617,208	2.00%	91,145	0.30%
	Cedar Breaks NM	492,353	-8.50%	83,424	-8.10%
	Dinosaur NM	53,004	1.10%	33,740	-6.60%
	Glen Canyon NRA ⁹	1,803,517	0.70%	2,858,253	-0.90%
	Golden Spike NHS	45,334	13.40%	9,340	15.60%
	Hovenweep NM	15,599	9.60%	4,423	8.30%
	Natural Bridges NM	92,023	0.20%	44,220	1.50%
	Rainbow Bridge NM	113,460	18.70%	14,183	18.70%
	Timpanogos Cave NM	138,571	12.00%	32,353	11.80%
	Zion NP	2,735,402	1.70%	1,586,939	2.30%
	Subtotal Utah	8,755,401	3.60%	6,203,657	2.00%
VERMONT					
	Marsh-Billings-Rockefeller NHP	31,129	-16.10%	5,188	-16.10%
	Subtotal Vermont	31,129	-16.10%	5,188	-16.10%

Table 8. 2009 Recreation Visits/Visitor Days by State (continued)

VIRGIN ISLANDS					
	Buck Island Reef NM	47,341	2.90%	24,783	2.00%
	Christiansted NHS	114,743	9.10%	5,389	7.00%
	Salt River Bay NHP & Ecological Pres	2,540	16.30%	212	16.30%
	Virgin Islands NP	415,847	-11.30%	213,122	-11.30%
	Subtotal Virgin Islands	580,471	-6.70%	243,506	-9.80%
VIRGINIA					
	Appomattox Court House NHP	185,443	3.70%	12,800	3.70%
	Arlington House The R.E. Lee MEM	603,773	16.40%	25,157	16.40%
	Assateague Island NS	1,426,871	5.90%	1,048,778	9.70%
	Blue Ridge PKWY	6,055,800	-2.30%	3,141,608	-2.20%
	Booker T. Washington NM	21,216	6.10%	2,835	-7.20%
	Colonial NHP	3,324,751	-0.20%	294,859	-0.90%
	Cumberland Gap NHP	61,856	4.70%	10,344	16.80%
	Fredericksburg & Spotsylvania NMP ⁴	906,175	91.20%	33,710	-41.60%
	George Washington Birthplace NM	113,083	13.10%	28,184	15.90%
	George Washington MEM PKWY	6,938,309	-1.00%	624,958	-2.70%
	LBJ Memorial Grove on the Potomac	333,368	-18.90%	13,891	-18.90%
	Maggie L. Walker NHS	9,853	33.70%	1,232	300.90%
	Manassas NBP	578,383	-2.80%	36,149	-2.80%
	Petersburg NB	162,722	5.70%	13,494	6.30%
	Prince William Forest Park	368,365	6.70%	231,077	2.00%
	Richmond NBP	134,634	11.40%	27,348	12.70%
	Shenandoah NP	1,120,981	4.20%	800,281	1.00%
	Theodore Roosevelt Island	141,559	29.70%	21,234	29.70%
	Wolf Trap NP for the Performing Arts	466,752	-4.20%	155,584	-4.20%
	Subtotal Virginia	22,953,894	1.80%	6,523,523	0.00%

Table 8. 2009 Recreation Visits/Visitor Days by State (continued)

WASHINGTON					
	Fort Vancouver NHS	1,017,326	13.70%	88,983	4.90%
	Klondike Gold Rush NHP Seattle ³	54,219	-7.10%	7,907	-7.10%
	Lake Chelan NRA	34,554	37.50%	36,520	65.00%
	Lake Roosevelt NRA ⁵	1,382,663	3.40%	413,453	12.90%
	Mount Rainier NP	1,151,654	-1.00%	1,152,269	3.00%
	North Cascades NP	26,972	44.00%	29,583	9.40%
	Olympic NP	3,276,459	6.30%	1,315,374	10.20%
	Ross Lake NRA	288,458	13.90%	151,659	20.20%
	San Juan Island NHP	274,642	7.50%	18,120	6.20%
	Whitman Mission NHS	52,605	-1.40%	4,384	-1.40%
	Subtotal Washington	7,559,552	5.90%	3,218,252	8.40%
WEST VIRGINIA					
	Bluestone NSR	45,904	-2.20%	9,564	-2.20%
	Chesapeake & Ohio Canal NHP	225,101	20.60%	37,823	19.80%
	Gauley River NRA	113,185	0.80%	38,153	-2.30%
	Harpers Ferry NHP	275,044	8.20%	91,682	8.20%
	New River Gorge NR	1,144,318	-5.70%	207,746	-0.30%
	Subtotal West Virginia	1,803,552	-0.50%	384,966	3.10%
WISCONSIN					
	Apostle Islands NL	170,202	4.50%	66,717	27.20%
	Saint Croix NSR	282,163	7.80%	294,467	6.80%
	Subtotal Wisconsin	452,365	6.50%	361,185	10.00%
WYOMING					
	Bighorn Canyon NRA	94,425	15.00%	29,807	10.30%
	Devil's Tower NM	391,023	16.30%	96,681	7.80%
	Fort Laramie NHS	56,923	17.90%	7,115	17.90%
	Fossil Butte NM	18,693	5.40%	2,441	3.60%
	Grand Teton NP	2,580,081	3.80%	1,542,603	1.40%
	John D. Rockefeller, Jr. MEM PKWY	1,139,923	3.70%	143,662	-1.70%
	Yellowstone NP	1,614,642	7.50%	2,864,776	7.20%
	Subtotal Wyoming	5,895,719	5.80%	4,687,085	5.00%

Table 9. 2010 and 2011 Forecast of Recreation Visits

Park Name	2009 Visits	2010 Forecast	% Change	2011 Forecast	% Change
Abraham Lincoln Birthplace NHP ¹	221,111	221,352	0.1%	227,447	2.8%
Acadia NP	2,227,698	2,231,580	0.2%	2,266,050	1.5%
Adams NHP	253,656	257,950	1.7%	266,210	3.2%
Agate Fossil Beds NM	12,694	11,931	-6.0%	11,519	-3.5%
Alibates Flint Quarries NM	2,918	2,918	0.0%	2,918	0.0%
Allegheny Portage Railroad NHS	118,931	118,540	-0.3%	118,553	0.0%
Amistad NRA	2,573,966	2,676,503	4.0%	2,949,471	10.2%
Andersonville NHS	136,267	153,345	12.5%	156,849	2.3%
Andrew Johnson NHS	63,296	69,554	9.9%	74,376	6.9%
Aniakchak NM & PRES	14	14	0.0%	14	0.0%
Antietam NB	378,966	400,569	5.7%	424,288	5.9%
Apostle Islands NL	170,202	165,073	-3.0%	161,447	-2.2%
Appomattox Court House NHP	185,443	198,268	6.9%	211,286	6.6%
Arches NP	996,312	1,037,510	4.1%	1,090,013	5.1%
Arkansas Post NMEM	32,160	35,980	11.9%	35,511	-1.3%
Arlington House The R.E. Lee MEM	603,773	585,241	-3.1%	607,184	3.7%
Assateague Island NS	2,129,658	2,139,747	0.5%	2,174,240	1.6%
Aztec Ruins NM	38,234	36,151	-5.4%	34,781	-3.8%
Badlands NP	933,918	899,662	-3.7%	905,178	0.6%
Bandelier NM	212,544	194,249	-8.6%	183,115	-5.7%
Bent's Old Fort NHS	28,131	26,043	-7.4%	25,969	-0.3%
Bering Land Bridge NPRES	1,054	1,054	0.0%	1,054	0.0%
Big Bend NP	363,905	356,046	-2.2%	355,490	-0.2%
Big Cypress NPRES	812,207	831,173	2.3%	838,670	0.9%
Big Hole NB	49,822	50,871	2.1%	49,826	-2.1%
Big South Fork NRA	686,747	670,739	-2.3%	673,555	0.4%
Big Thicket NPRES	100,509	100,215	-0.3%	102,091	1.9%
Bighorn Canyon NRA	205,293	200,565	-2.3%	202,831	1.1%
Biscayne NP	437,745	510,341	16.6%	492,867	-3.4%
Black Canyon of the Gunnison NP	171,451	172,798	0.8%	170,899	-1.1%
Blue Ridge PKWY	15,936,316	15,325,789	-3.8%	14,672,122	-4.3%
Bluestone NSR	45,904	47,139	2.7%	47,375	0.5%
Booker T. Washington NM	21,216	22,473	5.9%	23,610	5.1%
Boston African American NHS	298,519	275,372	-7.8%	272,014	-1.2%
Boston NHP	2,155,026	2,285,911	6.1%	2,347,278	2.7%
Brown V. Board of Education NHS	19,228	17,916	-6.8%	17,686	-1.3%

Table 9. 2010 and 2011 Forecast of Recreation Visits (continued)

Park Name	2009 Visits	2010 Forecast	% Change	2011 Forecast	% Change
Bryce Canyon NP	1,216,377	1,201,135	-1.3%	1,256,138	4.6%
Buck Island Reef NM	47,341	46,247	-2.3%	45,996	-0.5%
Buffalo NR	1,522,586	1,659,346	9.0%	1,800,822	8.5%
Cabrillo NM	767,687	703,593	-8.3%	681,858	-3.1%
Canaveral NS	1,001,665	1,002,730	0.1%	1,000,479	-0.2%
Cane River Creole NHP	27,411	25,319	-7.6%	24,027	-5.1%
Canyon de Chelly NM	826,425	829,369	0.4%	829,526	0.0%
Canyonlands NP	436,241	454,256	4.1%	467,246	2.9%
Cape Cod NS	4,311,949	4,708,102	9.2%	4,843,581	2.9%
Cape Hatteras NS	2,282,543	2,229,954	-2.3%	2,236,476	0.3%
Cape Krusenstern NM	1,810	1,810	0.0%	1,810	0.0%
Cape Lookout NS	601,954	601,954	0.0%	601,954	0.0%
Capitol Reef NP	617,208	635,900	3.0%	658,621	3.6%
Capulin Volcano NM	50,935	46,783	-8.2%	45,801	-2.1%
Carl Sandburg Home NHS ⁴	83,550	83,550	0.0%	83,550	0.0%
Carlsbad Caverns NP	432,639	421,963	-2.5%	425,035	0.7%
Casa Grande Ruins NM	76,350	65,617	-14.1%	59,991	-8.6%
Castillo de San Marcos NM	667,783	666,829	-0.1%	679,122	1.8%
Castle Clinton NM	4,080,152	4,093,068	0.3%	4,242,800	3.7%
Catoctin Mountain Park	440,294	445,169	1.1%	424,192	-4.7%
Cedar Breaks NM	492,353	514,964	4.6%	517,367	0.5%
Chaco Culture NHP ⁶	37,376	37,376	0.0%	37,376	0.0%
Chamizal NM	215,852	200,547	-7.1%	195,114	-2.7%
Channel Islands NP	348,745	306,077	-12.2%	284,697	-7.0%
Charles Pinckney NHS	43,447	46,629	7.3%	48,676	4.4%
Chattahoochee River NRA	2,830,655	2,956,036	4.4%	3,018,255	2.1%
Chesapeake & Ohio Canal NHP ⁴	3,751,681	3,615,153	-3.6%	3,772,717	4.4%
Chickamauga & Chattanooga NMP	992,448	1,036,512	4.4%	1,062,089	2.5%
Chickasaw NRA	1,238,484	1,227,389	-0.9%	1,204,725	-1.8%
Chiricahua NM	60,851	58,399	-4.0%	58,022	-0.6%
Christiansted NHS	114,743	112,174	-2.2%	114,346	1.9%
City of Rocks NR	96,649	101,565	5.1%	108,324	6.7%
Clara Barton NHS	10,986	9,052	-17.6%	8,395	-7.3%
Colonial NHP	3,324,751	3,324,723	0.0%	3,320,736	-0.1%
Colorado NM	400,266	422,631	5.6%	439,089	3.9%
Congaree NP	122,970	126,812	3.1%	131,633	3.8%
Coronado NMEM	106,409	103,223	-3.0%	109,173	5.8%
Cowpens NB	224,394	238,613	6.3%	250,856	5.1%

Table 9. 2010 and 2011 Forecast of Recreation Visits (continued)

Park Name	2009 Visits	2010 Forecast	% Change	2011 Forecast	% Change
Crater Lake NP	446,516	441,054	-1.2%	443,581	0.6%
Craters of the Moon NM	194,046	214,128	10.3%	217,289	1.5%
Cumberland Gap NHP	883,663	831,602	-5.9%	797,742	-4.1%
Cumberland Island NS	77,588	97,447	25.6%	108,785	11.6%
Curecanti NRA	953,169	1,012,440	6.2%	1,033,627	2.1%
Cuyahoga Valley NP	2,589,288	2,722,466	5.1%	2,769,500	1.7%
Dayton Aviation Heritage NHP	58,301	59,435	1.9%	61,427	3.4%
De Soto NMEM	246,608	261,808	6.2%	265,139	1.3%
Death Valley NP	828,574	845,163	2.0%	863,605	2.2%
Delaware Water Gap NRA	5,213,030	5,154,880	-1.1%	5,174,319	0.4%
Denali NP & PRES	358,041	391,247	9.3%	383,789	-1.9%
Devils Postpile NM	110,212	141,833	28.7%	153,265	8.1%
Devils Tower NM	391,023	364,018	-6.9%	368,361	1.2%
Dinosaur NM	203,862	138,054	-32.3%	99,034	-28.3%
Dry Tortugas NP	52,011	54,643	5.1%	52,675	-3.6%
Edgar Allan Poe NHS	17,463	17,310	-0.9%	18,482	6.8%
Effigy Mounds NM	78,177	70,105	-10.3%	65,881	-6.0%
Eisenhower NHS	64,212	66,606	3.7%	65,966	-1.0%
El Malpais NM	123,290	121,036	-1.8%	123,183	1.8%
El Morro NM	48,245	45,524	-5.6%	44,096	-3.1%
Eleanor Roosevelt NHS	54,393	54,393	0.0%	54,393	0.0%
Eugene O'Neill NHS	3,783	3,783	0.0%	3,783	0.0%
Everglades NP	900,882	757,780	-15.9%	677,999	-10.5%
Federal Hall NMEM	204,880	204,880	0.0%	204,880	0.0%
Fire Island NS	569,667	549,483	-3.5%	526,180	-4.2%
First Ladies NHS	10,466	10,466	0.0%	10,466	0.0%
Flight 93	149,668	149,668	0.0%	149,668	0.0%
Florissant Fossil Beds NM	64,251	61,681	-4.0%	62,719	1.7%
Ford's Theatre NHS ⁶	658,271	658,271	0.0%	658,271	0.0%
Fort Bowie NHS	9,641	9,835	2.0%	9,774	-0.6%
Fort Caroline NMEM	288,606	340,294	17.9%	374,455	10.0%
Fort Davis NHS	50,968	50,054	-1.8%	49,896	-0.3%
Fort Donelson NB	203,456	208,894	2.7%	207,359	-0.7%
Fort Frederica NM	296,117	236,617	-20.1%	216,199	-8.6%
Fort Laramie NHS	56,923	55,092	-3.2%	57,951	5.2%
Fort Larned NHS	27,443	23,019	-16.1%	21,194	-7.9%
Fort Matanzas NM	793,253	714,093	-10.0%	661,337	-7.4%

Table 9. 2010 and 2011 Forecast of Recreation Visits (continued)

Park Name	2009 Visits	2010 Forecast	% Change	2011 Forecast	% Change
Fort McHenry NM & HS	605,870	588,210	-2.9%	582,819	-0.9%
Fort Necessity NB	197,271	197,271	0.0%	197,271	0.0%
Fort Point NHS	1,385,134	1,279,427	-7.6%	1,197,679	-6.4%
Fort Pulaski NM	435,661	435,786	0.0%	465,248	6.8%
Fort Raleigh NHS	338,212	350,417	3.6%	364,077	3.9%
Fort Scott NHS	28,544	27,213	-4.7%	27,867	2.4%
Fort Smith NHS	63,540	67,728	6.6%	65,372	-3.5%
Fort Stanwix NM	93,170	100,742	8.1%	112,796	12.0%
Fort Sumter NM	785,604	769,364	-2.1%	767,488	-0.2%
Fort Union NM	11,070	9,856	-11.0%	9,623	-2.4%
Fort Union Trading Post NHS	15,141	12,245	-19.1%	11,699	-4.5%
Fort Vancouver NHS	1,017,326	1,008,088	-0.9%	1,071,725	6.3%
Fort Washington Park	339,370	339,370	0.0%	339,370	0.0%
Fossil Butte NM	18,693	19,014	1.7%	19,306	1.5%
Franklin Delano Roosevelt MEM	2,591,241	2,527,513	-2.5%	2,471,327	-2.2%
Frederick Douglass NHS	43,483	50,121	15.3%	56,163	12.1%
Frederick Law Olmsted NHS ⁶	5,007	5,007	0.0%	5,007	0.0%
Fredericksburg & Spotsylvania NMP ⁴	906,175	906,175	0.0%	906,175	0.0%
Friendship Hill NHS	31,454	32,751	4.1%	33,703	2.9%
Gates of the Arctic NP & PRES	9,975	11,085	11.1%	11,330	2.2%
Gateway NRA	9,010,522	9,523,182	5.7%	9,763,872	2.5%
Gauley River NRA	113,185	107,109	-5.4%	103,528	-3.3%
General Grant NMEM	100,874	100,667	-0.2%	103,411	2.7%
George Rogers Clark NHP ⁶	103,284	98,272	-4.9%	91,813	-6.6%
George Washington Birthplace NM	113,083	113,083	0.0%	113,083	0.0%
George Washington Carver NM	38,899	36,672	-5.7%	35,661	-2.8%
George Washington MEM PKWY	6,938,309	6,822,003	-1.7%	6,766,573	-0.8%
Gettysburg NMP ⁴	1,013,002	1,019,049	0.6%	1,020,000	0.1%
Gila Cliff Dwellings NM	43,016	42,170	-2.0%	42,609	1.0%
Glacier Bay NP & PRES	438,361	462,517	5.5%	478,776	3.5%
Glacier NP	2,031,348	1,979,277	-2.6%	1,984,890	0.3%
Glen Canyon NRA ⁹	1,960,345	1,968,824	0.4%	1,985,361	0.8%
Golden Gate NRA ⁴	15,036,372	15,396,201	2.4%	15,789,742	2.6%
Golden Spike NHS	45,334	44,668	-1.5%	45,163	1.1%
Governors Island NM	325,840	325,840	0.0%	325,840	0.0%
Grand Canyon NP	4,348,068	4,385,292	0.9%	4,389,189	0.1%
Grand Portage NM	76,025	82,772	8.9%	87,796	6.1%
Grand Teton NP	2,580,081	2,598,749	0.7%	2,630,028	1.2%

Table 9. 2010 and 2011 Forecast of Recreation Visits (continued)

Park Name	2009 Visits	2010 Forecast	% Change	2011 Forecast	% Change
Grant-Kohrs Ranch NHS	20,099	18,894	-6.0%	19,087	1.0%
Great Basin NP	84,974	79,921	-5.9%	80,438	0.6%
Great Sand Dunes NP & PRES	289,955	288,238	-0.6%	291,836	1.2%
Great Smoky Mountains NP	9,491,437	9,383,693	-1.1%	9,418,964	0.4%
Greenbelt Park	188,043	172,378	-8.3%	166,767	-3.3%
Guadalupe Mountains NP	198,882	188,413	-5.3%	193,068	2.5%
Guilford Courthouse NMP	290,368	250,990	-13.6%	196,416	-21.7%
Gulf Islands NS ⁶	4,132,674	4,132,674	0.0%	4,132,674	0.0%
Hagerman Fossil Beds NM	27,263	26,343	-3.4%	26,815	1.8%
Haleakala NP	1,109,104	1,011,901	-8.8%	914,686	-9.6%
Hamilton Grange NMEM ⁶	150	150	0.0%	150	0.0%
Hampton NHS	39,334	42,417	7.8%	45,999	8.4%
Harpers Ferry NHP	275,044	273,625	-0.5%	278,938	1.9%
Harry S Truman NHS	28,384	25,715	-9.4%	23,435	-8.9%
Hawaii Volcanoes NP	1,233,105	1,089,606	-11.6%	969,817	-11.0%
Herbert Hoover NHS	162,886	150,913	-7.4%	153,815	1.9%
Home of Franklin D. Roosevelt NHS	123,033	128,141	4.2%	131,716	2.8%
Homestead NM	71,301	79,661	11.7%	84,829	6.5%
Hopewell Culture NHP	34,179	32,376	-5.3%	32,960	1.8%
Hopewell Furnace NHS	53,186	53,500	0.6%	54,150	1.2%
Horseshoe Bend NMP	72,232	67,447	-6.6%	68,245	1.2%
Hot Springs NP	1,284,707	1,243,460	-3.2%	1,228,838	-1.2%
Hovenweep NM	27,855	26,943	-3.3%	27,087	0.5%
Hubbell Trading Post NHS	99,267	99,267	0.0%	99,267	0.0%
Independence NHP	3,967,694	4,019,928	1.3%	4,077,692	1.4%
Indiana Dunes NL	1,944,568	1,822,174	-6.3%	1,775,166	-2.6%
Isle Royale NP	14,653	13,270	-9.4%	12,418	-6.4%
James A. Garfield NHS	17,100	17,100	0.0%	17,100	0.0%
Jean Lafitte NHP & PRES	335,075	335,075	0.0%	335,075	0.0%
Jefferson NEM	2,360,109	1,907,372	-19.2%	1,728,672	-9.4%
Jewel Cave NM	129,595	124,314	-4.1%	130,078	4.6%
Jimmy Carter NHS	69,972	67,507	-3.5%	62,152	-7.9%
John D. Rockefeller, Jr. MEM PKWY	1,139,923	1,161,340	1.9%	1,180,206	1.6%
John Day Fossil Beds NM	130,925	124,029	-5.3%	124,519	0.4%
John F. Kennedy NHS	16,333	16,333	0.0%	16,333	0.0%
John Muir NHS	34,516	33,957	-1.6%	35,154	3.5%
Johnstown Flood NMEM	114,350	128,329	12.2%	131,108	2.2%

Table 9. 2010 and 2011 Forecast of Recreation Visits (continued)

Park Name	2009 Visits	2010 Forecast	% Change	2011 Forecast	% Change
Joshua Tree NP	1,304,471	1,323,909	1.5%	1,323,384	0.0%
Kalaupapa NHP	30,654	30,654	0.0%	30,654	0.0%
Kaloko Honokohau NHP	166,380	163,778	-1.6%	179,125	9.4%
Katmai NP & PRES	43,035	43,035	0.0%	43,035	0.0%
Kenai Fjords NP	218,358	239,220	9.6%	233,289	-2.5%
Kennesaw Mountain NBP	1,372,228	1,537,812	12.1%	1,621,135	5.4%
Kings Canyon NP	609,296	597,664	-1.9%	602,755	0.9%
Kings Mountain NMP	277,576	268,730	-3.2%	270,137	0.5%
Klondike Gold Rush NHP Alaska ³	880,512	921,778	4.7%	923,516	0.2%
Klondike Gold Rush NHP Seattle ³	54,219	49,940	-7.9%	47,155	-5.6%
Knife River Indian Villages NHS	29,390	25,568	-13.0%	25,286	-1.1%
Kobuk Valley NP	1,879	1,879	0.0%	1,879	0.0%
Korean War Memorial NMEM	3,117,046	3,397,195	9.0%	3,418,333	0.6%
Lake Chelan NRA	34,554	31,717	-8.2%	31,670	-0.1%
Lake Clark NP	9,711	9,584	-1.3%	10,593	10.5%
Lake Mead NRA	7,668,689	7,605,560	-0.8%	7,583,221	-0.3%
Lake Meredith NRA	1,080,644	949,939	-12.1%	927,196	-2.4%
Lake Roosevelt NRA ⁵	1,382,663	1,427,724	3.3%	1,455,376	1.9%
Lassen Volcanic NP	365,639	375,115	2.6%	373,998	-0.3%
Lava Beds NM	129,639	130,836	0.9%	136,827	4.6%
LBJ Memorial Grove on the Potomac	333,368	333,981	0.2%	303,760	-9.0%
Lewis & Clark National Historical Park	225,846	222,593	-1.4%	219,833	-1.2%
Lincoln Boyhood NMEM	182,172	173,663	-4.7%	182,943	5.3%
Lincoln Home NHS	464,074	404,048	-12.9%	407,611	0.9%
Lincoln Memorial	5,255,570	5,550,163	5.6%	5,960,367	7.4%
Little Bighorn Battlefield NM	302,811	280,195	-7.5%	273,395	-2.4%
Little River Canyon NPRES	189,251	201,404	6.4%	197,630	-1.9%
Little Rock Central High School NHS	60,103	60,103	0.0%	60,103	0.0%
Longfellow NHS	39,065	39,065	0.0%	39,065	0.0%
Lowell NHP	565,960	491,708	-13.1%	454,626	-7.5%
Lyndon B. Johnson NHP ⁴	98,218	104,088	6.0%	109,986	5.7%
Maggie L. Walker NHS	9,853	9,204	-6.6%	9,537	3.6%
Mammoth Cave NP	503,856	503,856	0.0%	503,856	0.0%
Manassas NBP	578,383	523,454	-9.5%	488,020	-6.8%
Manzanar NHS	89,190	86,766	-2.7%	87,996	1.4%
Marsh-Billings-Rockefeller NHP	31,129	36,187	16.2%	38,145	5.4%
Martin Luther King, Jr. NHS	650,343	651,183	0.1%	643,008	-1.3%
Martin Van Buren NHS	23,216	23,216	0.0%	23,216	0.0%

Table 9. 2010 and 2011 Forecast of Recreation Visits (continued)

Park Name	2009 Visits	2010 Forecast	% Change	2011 Forecast	% Change
Mary McLeod Bethune Council House NHS	21,811	24,617	12.9%	27,343	11.1%
Mesa Verde NP	550,377	569,187	3.4%	579,016	1.7%
Minute Man NHP	1,096,024	1,112,842	1.5%	1,124,994	1.1%
Minuteman Missile NHS	36,777	44,847	21.9%	52,028	16.0%
Missouri National Recreational River	186,313	186,313	0.0%	186,313	0.0%
Mojave NPRES	528,865	542,036	2.5%	529,408	-2.3%
Monocacy NB	34,553	38,654	11.9%	43,237	11.9%
Montezuma Castle NM	601,465	593,868	-1.3%	590,296	-0.6%
Moores Creek NB	68,864	64,709	-6.0%	68,845	6.4%
Morristown NHP	298,060	311,846	4.6%	323,024	3.6%
Mount Rainier NP	1,151,654	1,131,555	-1.7%	1,132,069	0.0%
Mount Rushmore NMEM	2,260,192	2,059,920	-8.9%	2,084,342	1.2%
Muir Woods NM	779,880	820,703	5.2%	831,144	1.3%
Natchez NHP	218,126	212,206	-2.7%	205,464	-3.2%
Natchez Trace PKWY	5,934,363	6,012,370	1.3%	6,106,151	1.6%
National Capital Parks Central ^{3,7}	3,678,876	2,600,000	-29.3%	2,700,000	3.8%
National Capital Parks East ³	1,272,212	1,241,273	-2.4%	1,216,293	-2.0%
National Park of American Samoa ⁷	3,242	3,242	0.0%	3,242	0.0%
Natural Bridges NM	92,023	79,573	-13.5%	73,783	-7.3%
Navajo NM	77,901	84,247	8.1%	89,144	5.8%
New Bedford Whaling NHP	279,803	262,456	-6.2%	245,604	-6.4%
New Orleans Jazz NHP	80,828	88,302	9.2%	99,654	12.9%
New River Gorge NR	1,144,318	1,226,689	7.2%	1,255,207	2.3%
Nez Perce NHP	176,238	213,190	21.0%	223,104	4.6%
Nicodemus NHS	2,978	2,978	0.0%	2,978	0.0%
Ninety Six NHS	50,689	61,050	20.4%	67,793	11.0%
Niobrara NSR	68,058	76,030	11.7%	78,879	3.7%
Noatak NPRES	2,474	2,474	0.0%	2,474	0.0%
North Cascades NP	26,972	25,456	-5.6%	27,069	6.3%
Obed W&SR	212,933	214,087	0.5%	222,211	3.8%
Ocmulgee NM	110,819	96,710	-12.7%	89,057	-7.9%
Olympic NP	3,276,459	3,227,601	-1.5%	3,287,563	1.9%
Oregon Caves NM	88,496	81,663	-7.7%	82,087	0.5%
Organ Pipe Cactus NM	330,064	359,178	8.8%	371,895	3.5%
Ozark NSR	1,308,718	1,255,655	-4.1%	1,181,665	-5.9%
Padre Island NS	642,163	623,625	-2.9%	609,235	-2.3%
Palo Alto Battlefield NHP ¹	41,599	41,599	0.0%	41,599	0.0%

Table 9. 2010 and 2011 Forecast of Recreation Visits (continued)

Park Name	2009 Visits	2010 Forecast	% Change	2011 Forecast	% Change
Pea Ridge NMP	68,746	70,156	2.1%	71,023	1.2%
Pecos NHP	34,522	33,106	-4.1%	32,714	-1.2%
Pennsylvania Avenue NHS	256,874	266,749	3.8%	280,507	5.2%
Perry's Victory & Intl. Peace MEM	154,457	154,457	0.0%	154,457	0.0%
Petersburg NB	162,722	165,432	1.7%	169,397	2.4%
Petrified Forest NP	631,613	592,346	-6.2%	595,196	0.5%
Petroglyph NM	118,688	122,602	3.3%	125,295	2.2%
Pictured Rocks NL	448,215	413,578	-7.7%	405,791	-1.9%
Pinnacles NM	171,112	168,307	-1.6%	169,147	0.5%
Pipe Spring NM	49,433	45,596	-7.8%	44,192	-3.1%
Pipestone NM	69,539	75,569	8.7%	76,840	1.7%
Piscataway Park	234,186	234,186	0.0%	234,186	0.0%
Point Reyes NS	2,170,646	2,299,935	6.0%	2,354,659	2.4%
President's Park ³	1,475,182	1,200,000	-18.7%	1,200,000	0.0%
Prince William Forest Park	368,365	412,727	12.0%	453,562	9.9%
Pu'uhonua o Honaunau NHP	397,665	384,413	-3.3%	361,651	-5.9%
Pu'ukohola Heiau NHS	99,042	91,850	-7.3%	88,686	-3.4%
Rainbow Bridge NM	113,460	113,626	0.1%	120,870	6.4%
Redwood NP	444,426	434,989	-2.1%	446,357	2.6%
Richmond NBP	134,634	134,634	0.0%	134,634	0.0%
Rio Grande W&SR	947	947	0.0%	947	0.0%
Rock Creek Park	2,076,500	2,040,685	-1.7%	2,019,027	-1.1%
Rocky Mountain NP	2,822,325	2,821,917	0.0%	2,828,080	0.2%
Roger Williams NMEM	50,397	47,730	-5.3%	47,024	-1.5%
Ross Lake NRA	288,458	277,239	-3.9%	277,845	0.2%
Russell Cave NM	24,087	24,087	0.0%	24,087	0.0%
Sagamore Hill NHS	53,800	59,090	9.8%	63,254	7.0%
Saguaro NP	665,234	660,570	-0.7%	656,090	-0.7%
Saint Croix NSR	564,326	557,762	-1.2%	567,964	1.8%
Saint Paul's Church NHS	14,432	14,806	2.6%	14,929	0.8%
Saint-Gaudens NHS	34,558	35,011	1.3%	36,930	5.5%
Salem Maritime NHS	723,088	828,961	14.6%	847,834	2.3%
Salinas Pueblo Missions NM	37,848	35,291	-6.8%	35,724	1.2%
Salt River Bay NHP & Ecological Pres	2,540	2,540	0.0%	2,540	0.0%
San Antonio Missions NHP	1,567,667	1,574,409	0.4%	1,673,060	6.3%
San Francisco Maritime NHP	4,152,497	4,184,621	0.8%	4,230,065	1.1%
San Juan Island NHP	274,642	277,525	1.0%	282,766	1.9%
San Juan NHS	1,069,673	1,090,056	1.9%	1,089,894	0.0%

Table 9. 2010 and 2011 Forecast of Recreation Visits (continued)

Park Name	2009 Visits	2010 Forecast	% Change	2011 Forecast	% Change
Santa Monica Mountains NRA	501,573	494,169	-1.5%	493,545	-0.1%
Saratoga NHP	89,366	87,936	-1.6%	85,055	-3.3%
Saugus Iron Works NHS ⁶	10,529	10,529	0.0%	10,529	0.0%
Scotts Bluff NM	121,391	125,753	3.6%	131,468	4.5%
Sequoia NP	965,170	935,661	-3.1%	925,277	-1.1%
Shenandoah NP	1,120,981	1,110,589	-0.9%	1,115,776	0.5%
Shiloh NMP	404,134	416,042	2.9%	435,977	4.8%
Sitka NHP	246,866	229,373	-7.1%	211,425	-7.8%
Sleeping Bear Dunes NL	1,165,836	1,053,371	-9.6%	1,021,587	-3.0%
Springfield Armory NHS	17,779	18,145	2.1%	18,847	3.9%
Statue of Liberty NM	3,829,483	3,496,671	-8.7%	3,444,615	-1.5%
Steamtown NHS	65,144	60,492	-7.1%	56,909	-5.9%
Stones River NB	189,952	187,961	-1.0%	184,457	-1.9%
Sunset Crater Volcano NM	187,397	186,882	-0.3%	177,178	-5.2%
Tallgrass Prairie NPRES	23,713	23,836	0.5%	24,337	2.1%
Thaddeus Kosciuszko NMEM	3,357	3,529	5.1%	3,372	-4.5%
Theodore Roosevelt Birthplace NHS	14,390	17,892	24.3%	19,326	8.0%
Theodore Roosevelt Inaugural NHS ⁶	11,735	11,735	0.0%	11,735	0.0%
Theodore Roosevelt Island	141,559	134,720	-4.8%	141,239	4.8%
Theodore Roosevelt NP	586,928	578,447	-1.4%	605,337	4.6%
Thomas Edison NHP ¹	27,061	27,061	0.0%	27,061	0.0%
Thomas Jefferson MEM	2,337,868	2,370,361	1.4%	2,389,790	0.8%
Thomas Stone NHS	6,268	6,550	4.5%	6,973	6.5%
Timpanogos Cave NM	138,571	142,754	3.0%	150,849	5.7%
Timucuan EHP	1,195,171	1,213,078	1.5%	1,274,166	5.0%
Tonto NM	60,534	55,009	-9.1%	52,070	-5.3%
Tumacacori NHP	40,637	42,036	3.4%	41,365	-1.6%
Tuskegee Airmen NHS	58,417	58,417	0.0%	58,417	0.0%
Tuskegee Institute NHS	31,360	30,901	-1.5%	21,091	-31.7%
Tuzigoot NM	106,250	103,139	-2.9%	101,496	-1.6%
Ulysses S. Grant NHS	40,703	40,703	0.0%	40,703	0.0%
Upper Delaware S&RR	258,311	278,864	8.0%	289,137	3.7%
Valley Forge NHP	1,449,228	1,405,682	-3.0%	1,430,446	1.8%
Vanderbilt Mansion NHS	380,460	375,963	-1.2%	374,395	-0.4%
Vicksburg NMP	584,105	535,647	-8.3%	499,622	-6.7%
Vietnam Veterans MEM	4,437,771	4,515,801	1.8%	4,704,745	4.2%
Virgin Islands NP	415,847	292,526	-29.7%	194,262	-33.6%

Table 9. 2010 and 2011 Forecast of Recreation Visits (continued)

Park Name	2009 Visits	2010 Forecast	% Change	2011 Forecast	% Change
Voyageurs NP	222,429	215,847	-3.0%	212,389	-1.6%
Walnut Canyon NM	128,299	115,401	-10.1%	113,507	-1.6%
War In the Pacific NHP	271,608	271,608	0.0%	271,608	0.0%
Washington Monument	676,002	748,853	10.8%	798,986	6.7%
Washita Battlefield NHS	10,527	10,932	3.8%	9,992	-8.6%
Weir Farm NHS	19,386	21,646	11.7%	23,970	10.7%
Whiskeytown NRA	853,812	806,485	-5.5%	821,823	1.9%
White House	616,890	620,811	0.6%	656,766	5.8%
White Sands NM	471,167	459,326	-2.5%	463,228	0.8%
Whitman Mission NHS	52,605	51,014	-3.0%	50,421	-1.2%
William Howard Taft NHS	18,802	19,795	5.3%	20,915	5.7%
Wilson's Creek NB	156,230	156,230	0.0%	156,230	0.0%
Wind Cave NP ⁴	587,868	573,546	-2.4%	566,863	-1.2%
Wolf Trap NP for the Performing Arts	466,752	446,794	-4.3%	428,932	-4.0%
Women's Rights NHP	20,620	22,864	10.9%	24,035	5.1%
World War II Memorial	4,118,528	4,036,924	-2.0%	4,007,385	-0.7%
World War II Valor in the Pacific NM	1,276,868	1,259,902	-1.3%	1,190,426	-5.5%
Wrangell-St. Elias NP & PRES	59,966	65,513	9.3%	67,797	3.5%
Wright Brothers NMEM	476,291	513,566	7.8%	523,192	1.9%
Wupatki NM	233,284	242,689	4.0%	245,721	1.2%
Yellowstone NP	3,295,187	3,378,418	2.5%	3,489,954	3.3%
Yosemite NP	3,737,472	3,760,498	0.6%	3,866,051	2.8%
Yukon-Charley Rivers NPRES	6,432	6,432	0.0%	6,432	0.0%
Zion NP	2,735,402	2,773,454	1.4%	2,815,482	1.5%
NPS Total	285,579,941	284,348,838	-0.4%	286,989,973	0.9%

Notes: Forecasts are trend line extensions based on actual visitation data from the previous 5 years.

Table 10. 2009 Listing of Acreage

Area Name	State	Region	Federal Area				Non-Federal Land			Gross Area Acres
			Fee Acres	Less Than Fee Acres	Other Fee Acres	Sub-Total Acres	Other Public Acres	Private Acres	Sub-total Acres	
A Lincoln Birthpl NHS ¹	KY	SE	344.50	0.00	0.00	344.50	0.00	0.00	0.00	344.50
Acadia NP	ME	NE	35,694.17	10,624.09	21.80	46,340.06	48.22	1,025.93	1,074.15	47,414.21
Adams NHP	MA	NE	9.17	0.00	0.00	9.17	4.00	10.65	14.65	23.82
African Burial Ground NM	NY	NE	0.35	0.00	0.00	0.35	0.00	0.00	0.00	0.35
Agate Fossil Beds NM	NE	MW	2,270.33	469.84	0.00	2,740.17	24.43	293.27	317.70	3,057.87
Alagnak Wild RVR	AK	A	28,433.55	0.00	0.00	28,433.55	90.00	2,141.92	2,231.92	30,665.47
Alibates Flint Quarries N	TX	IM	1,079.23	0.00	0.00	1,079.23	0.00	291.74	291.74	1,370.97
Allegheny Prtge RR NHS	PA	NE	1,255.02	0.00	0.00	1,255.02	16.25	13.00	29.25	1,284.27
Amistad NRA	TX	IM	57,292.44	0.00	0.00	57,292.44	0.00	1,207.56	1,207.56	58,500.00
Andersonville NHS	GA	SE	499.88	1.00	0.00	500.88	7.89	5.84	13.73	514.61
Andrew Johnson NHS	TN	SE	16.68	0.00	0.00	16.68	0.00	0.00	0.00	16.68
Aniakchak N Preserve	AK	A	458,124.00	0.00	0.00	458,124.00	5,147.00	846.93	5,993.93	464,117.93
Aniakchak NM	AK	A	137,176.00	0.00	0.00	137,176.00	0.00	0.00	0.00	137,176.00
Antietam NB	MD	NC	1,991.36	751.40	0.00	2,742.76	20.98	466.63	487.61	3,230.37
Apostle Islands NL	WI	MW	42,160.65	0.00	0.00	42,160.65	27,206.70	4.54	27,211.24	69,371.89
Appalachian NS Trail	ME TO GA 6/	NT	99,025.59	13,996.92	58,453.89	171,476.40	49,183.71	15,836.86	65,020.57	236,496.97
Appomattox CRT HS NHP	VA	NE	1,695.29	-0.31	0.00	1,694.98	2.12	77.01	79.13	1,774.11
Arches NP	UT	IM	76,545.95	0.00	0.00	76,545.95	133.03	0.00	133.03	76,678.98
Arkansas Post NMEM	AR	MW	649.91	0.00	0.00	649.91	0.00	107.60	107.60	757.51
Arl House, R E Lee MEM	VA	NC	28.08	0.00	0.00	28.08	0.00	0.00	0.00	28.08
Assateague Island NS	MD-VA 2/	NE	8,983.42	101.82	9,842.69	18,927.93	22,389.33	2.78	22,392.11	41,320.04
Aztec Ruins NM	NM	IM	257.33	0.00	0.00	257.33	6.78	53.69	60.47	317.80
Badlands NP	SD	MW	110,498.24	122,324.00	0.00	232,822.24	39.24	9,894.46	9,933.70	242,755.94
Bandelier NM	NM	IM	32,831.44	0.00	0.00	32,831.44	0.00	845.23	845.23	33,676.67
Bent's Old Fort NHS	CO	IM	735.60	0.00	0.00	735.60	7.40	55.80	63.20	798.80
Bering Land Bridge N PRES	AK	A	2,632,706.00	0.00	0.00	2,632,706.00	0.00	64,685.63	64,685.63	2,697,391.63
Big Bend NP	TX	IM	775,273.38	0.00	0.00	775,273.38	2,606.87	23,282.96	25,889.83	801,163.21
Big Cypress Addition	FL 7/	SE	112,159.82	0.00	0.00	112,159.82	32,819.52	1,134.00	33,953.52	146,113.34
Big Cypress N Preserve	FL 7/	SE	535,717.25	0.00	0.00	535,717.25	37,886.57	844.31	38,730.88	574,448.13
Big Hole NB	MT	PW	655.61	0.00	0.00	655.61	0.00	355.00	355.00	1,010.61
Big South Fork NR & RA	KY-TN	SE	116,307.95	0.00	21.13	116,329.08	3,220.23	5,761.03	8,981.26	125,310.34
Big Thicket N Preserve	TX	IM	102,363.27	13.34	0.00	102,376.61	63.97	3,365.49	3,429.46	105,806.07
Bighorn Canyon NRA	MT-WY	IM	47,986.04	889.89	19,614.94	68,490.87	1,392.29	50,413.06	51,805.35	120,296.22
Biscayne NP	FL	SE	170,976.68	0.00	26.13	171,002.81	1,587.05	381.25	1,968.30	172,971.11
Black Canyon Of Gunnison	CO	IM	26,775.48	3,494.55	480.00	30,750.03	0.00	0.00	0.00	30,750.03
Blue Ridge PKWY	NC-VA	SE	81,785.24	2,775.57	125.00	84,685.81	261.03	10,122.15	10,383.18	95,068.99
Bluestone NSR	WV	NE	3,032.00	0.00	0.00	3,032.00	1,236.00	41.51	1,277.51	4,309.51
Booker T Washington NM	VA	NE	239.01	0.00	0.00	239.01	0.00	0.00	0.00	239.01
Boston Afri-Amer NHS	MA	NE	0.00	0.00	0.00	0.00	0.06	0.53	0.59	0.59

Table 10. 2009 Listing of Acreage (continued)

Area Name	State	Region	Federal Area				Non-Federal Land			Gross Area Acres
			Fee Acres	Less Than Fee Acres	Other Fee Acres	Sub-Total Acres	Other Public Acres	Private Acres	Sub-total Acres	
Boston Harbor Island NRA	MA	NE	0.00	240.51	5.00	245.51	988.74	248.00	1,236.74	1,482.25
Boston NHP	MA	NE	37.46	0.00	0.00	37.46	5.09	0.77	5.86	43.32
Brices Cross RDS NBS	MS	SE	1.00	0.00	0.00	1.00	0.00	0.00	0.00	1.00
Brown V. Bd Of Ed. NHS	KS	MW	1.85	0.00	0.00	1.85	0.00	0.00	0.00	1.85
Bryce Canyon NP	UT	IM	35,832.58	0.00	0.00	35,832.58	0.00	2.50	2.50	35,835.08
Buck Island Reef NM	VI	SE	880.00	0.00	18,135.47	19,015.47	0.00	0.00	0.00	19,015.47
Buffalo N RVR	AR	MW	88,418.63	3,394.46	0.00	91,813.09	2,367.91	112.31	2,480.22	94,293.31
C & O Canal NHP	MD-DC-WV	NC	13,156.94	1,308.25	0.00	14,465.19	3,173.62	1,973.56	5,147.18	19,612.37
Cabrillo NM	CA	PW	159.94	0.00	0.00	159.94	0.00	0.00	0.00	159.94
Canaveral NS	FL	SE	17,735.69	0.00	39,912.00	57,647.69	0.00	14.00	14.00	57,661.69
Cane River Creole NHP	LA	SE	62.39	0.00	0.00	62.39	4.64	138.47	143.11	205.50
Canyon De Chelly NM	AZ	IM	0.00	0.00	0.00	0.00	0.00	83,840.00	83,840.00	83,840.00
Canyonlands NP	UT	IM	337,269.40	301.03	0.00	337,570.43	27.40	0.00	27.40	337,597.83
Cape Cod NS	MA	NE	27,102.93	346.75	31.86	27,481.54	14,556.22	1,569.43	16,125.65	43,607.19
Cape Hatteras NS	NC	SE	24,470.10	0.00	5,880.00	30,350.10	0.00	0.55	0.55	30,350.65
Cape Krusenstern NM	AK	A	616,319.24	10,133.54	0.00	626,452.78	438.00	22,191.42	22,629.42	649,082.20
Cape Lookout NS	NC	SE	13,915.70	11,243.40	14.52	25,173.62	3,048.16	21.58	3,069.74	28,243.36
Capitol Reef NP	UT	IM	241,234.29	0.00	0.00	241,234.29	669.97	0.00	669.97	241,904.26
Capulin Volcano NM	NM	IM	792.84	0.00	0.00	792.84	0.00	0.00	0.00	792.84
Carl Sandburg Home NHS ⁴	NC	SE	263.52	0.00	0.00	263.52	0.00	0.13	0.13	263.65
Carlsbad Caverns NP	NM	IM	46,427.26	0.00	0.00	46,427.26	0.00	339.19	339.19	46,766.45
Carter G. Woodson NHS	DC	NC	0.15	0.00	0.00	0.15	0.00	0.00	0.00	0.15
Casa Grande Ruins NM	AZ	IM	472.50	0.00	0.00	472.50	0.00	0.00	0.00	472.50
Castillo De San Marcos NM	FL	SE	17.61	0.00	0.00	17.61	0.02	0.01	0.03	17.64
Castle Clinton NM	NY	NE	1.00	0.00	0.00	1.00	0.00	0.00	0.00	1.00
Catoctin Mt Park	MD	NC	5,808.74	0.00	0.00	5,808.74	0.00	1.13	1.13	5,809.87
Cedar Breaks NM	UT	IM	6,154.60	0.00	0.00	6,154.60	0.00	0.00	0.00	6,154.60
Cedar Creek/Belle Grove NHP	VA	NE	68.87	0.00	0.00	68.87	21.09	3,621.72	3,642.81	3,711.68
Chaco Culture NHP ⁶	NM	IM	32,840.14	0.00	0.00	32,840.14	0.00	1,120.05	1,120.05	33,960.19
Chamizal NMEM	TX	IM	54.90	0.00	0.00	54.90	0.00	0.00	0.00	54.90
Channel Islands NP	CA	PW	69,425.66	0.00	9,592.96	79,018.62	124,554.15	45,988.23	170,542.38	249,561.00
Charles Pinckney NHS	SC	SE	28.45	0.00	0.00	28.45	0.00	0.00	0.00	28.45
Chattahoochee RVR NRA	GA	SE	4,800.43	112.43	0.00	4,912.86	2,674.70	1,766.45	4,441.15	9,354.01
Chick & Chatt NMP	GA-TN	SE	8,960.38	12.89	0.00	8,973.27	0.00	63.04	63.04	9,036.31
Chickasaw NRA	OK	IM	9,695.79	9.20	189.14	9,894.13	4.50	0.00	4.50	9,898.63
Chiricahua NM	AZ	IM	11,132.38	0.00	850.00	11,982.38	0.00	2.35	2.35	11,984.73
Christiansted NHS	VI	SE	26.24	0.00	0.00	26.24	0.91	0.00	0.91	27.15
City Of Rocks NReserve	ID	PW	9,680.28	0.00	0.00	9,680.28	640.00	4,086.91	4,726.91	14,407.19
Clara Barton NHS	MD	NC	8.59	0.00	0.00	8.59	0.00	0.00	0.00	8.59
Colonial NHP	VA	NE	8,048.82	556.47	0.00	8,605.29	68.83	2.79	71.62	8,676.91
Colorado NM	CO	IM	20,533.93	0.00	0.00	20,533.93	0.00	0.00	0.00	20,533.93

Table 10. 2009 Listing of Acreage (continued)

Area Name	State	Region	Federal Area				Non-Federal Land			Gross Area Acres
			Fee Acres	Less Than Fee Acres	Other Fee Acres	Sub-Total Acres	Other Public Acres	Private Acres	Sub-total Acres	
Congaree NP	SC	SE	25,174.26	0.00	0.00	25,174.26	0.00	1,371.60	1,371.60	26,545.86
Constitution Gardens	DC	NC	52.00	0.00	0.00	52.00	0.00	0.00	0.00	52.00
Coronado NMEM	AZ	IM	4,609.88	0.00	138.34	4,748.22	0.00	2.00	2.00	4,750.22
Cowpens NB	SC	SE	790.90	0.00	0.00	790.90	46.63	4.03	50.66	841.56
Crater Lake NP	OR	PW	183,223.77	0.00	0.00	183,223.77	0.00	0.28	0.28	183,224.05
Craters Of The Moon NM	ID	PW	53,398.31	0.00	172.74	53,571.05	0.00	0.00	0.00	53,571.05
Craters Of The Moon NPRES	ID	PW	410,732.92	0.00	0.00	410,732.92	0.00	0.00	0.00	410,732.92
Cumberland Gap NHP	KY-TN-VA	SE	22,173.79	185.61	0.00	22,359.40	8.78	6.21	14.99	22,374.39
Cumberland Island NS	GA	SE	18,866.37	1.63	656.92	19,524.92	13,820.15	3,001.76	16,821.91	36,346.83
Curecanti NRA	CO 1/	IM	0.00	1.38	41,971.04	41,972.42	0.00	0.00	0.00	41,972.42
Cuyahoga Valley NP	OH	MW	18,440.16	1,321.13	0.00	19,761.29	8,201.58	4,892.64	13,094.22	32,855.51
Dayton Aviation HR NHP	OH	MW	0.69	0.00	84.41	85.10	0.47	0.89	1.36	86.46
De Soto NMEM	FL	SE	24.78	0.00	0.00	24.78	0.00	5.22	5.22	30.00
Death Valley NP	CA-NV	PW	3,323,810.39	0.00	80.00	3,323,890.39	38,863.53	10,288.16	49,151.69	3,373,042.08
Del Water Gap NRA	NJ-PA	NE	56,242.90	52.76	0.00	56,295.66	7,525.31	2,920.19	10,445.50	66,741.16
Delaware NSR	NJ-PA	NE	0.00	0.00	0.00	0.00	1,973.33	0.00	1,973.33	1,973.33
Denali N Preserve	AK	A	1,303,972.00	0.00	0.00	1,303,972.00	640.00	29,505.87	30,145.87	1,334,117.87
Denali NP	AK	A	4,732,648.51	2.00	0.00	4,732,650.51	5,663.00	2,597.81	8,260.81	4,740,911.32
Devils Postpile NM	CA	PW	798.46	0.00	0.00	798.46	0.00	0.00	0.00	798.46
Devils Tower NM	WY	IM	1,346.91	0.00	0.00	1,346.91	0.00	0.00	0.00	1,346.91
Dinosaur NM	CO-UT	IM	203,031.38	2,654.16	0.00	205,685.54	50.96	4,541.05	4,592.01	210,277.55
Dry Tortugas NP	FL	SE	61,481.22	0.00	0.00	61,481.22	3,220.00	0.00	3,220.00	64,701.22
Ebey's Landing NH RES	WA	PW	683.57	2,070.18	2.50	2,756.25	68.00	16,508.76	16,576.76	19,333.01
Edgar Allan Poe NHS	PA	NE	0.52	0.00	0.00	0.52	0.00	0.00	0.00	0.52
Effigy Mounds NM	IA	MW	2,526.39	0.00	0.00	2,526.39	0.00	0.00	0.00	2,526.39
Eisenhower NHS	PA	NE	687.37	3.09	0.00	690.46	0.00	0.00	0.00	690.46
El Malpais NM	NM	IM	109,611.62	0.00	0.00	109,611.62	402.37	4,262.96	4,665.33	114,276.95
El Morro NM	NM	IM	1,039.92	0.00	0.00	1,039.92	0.00	238.80	238.80	1,278.72
Eleanor Roosevelt NHS	NY	NE	180.50	0.00	0.00	180.50	0.00	0.00	0.00	180.50
Eugene O'Neill NHS	CA	PW	13.19	0.00	0.00	13.19	0.00	0.00	0.00	13.19
Everglades Expansion	FL 8/	SE	107,833.58	0.00	1,347.15	109,180.73	0.00	1,054.40	1,054.40	110,235.13
Everglades NP	FL 8/	SE	1,398,607.13	0.00	0.00	1,398,607.13	0.00	285.82	285.82	1,398,892.95
FDR Memorial	DC	NC	7.50	0.00	0.00	7.50	0.00	0.00	0.00	7.50
Federal Hall NMEM	NY	NE	0.45	0.00	0.00	0.45	0.00	0.00	0.00	0.45
Fire Island NS	NY	NE	3,090.44	3,151.51	0.00	6,241.95	12,422.73	915.61	13,338.34	19,580.29
First Ladies NHS	OH	MW	0.33	0.00	0.00	0.33	0.00	0.00	0.00	0.33
Flight 93 National Memorial	PA	NE	1,454.91	0.00	0.00	1,454.91	0.00	866.92	866.92	2,321.83
Florissant Fossil Beds NM	CO	IM	5,992.32	0.00	0.00	5,992.32	5.77	0.00	5.77	5,998.09
Ford's Theatre NHS ⁶	DC	NC	0.30	0.00	0.00	0.30	0.00	0.00	0.00	0.30
Fossil Butte NM	WY	IM	8,198.00	0.00	0.00	8,198.00	0.00	0.00	0.00	8,198.00
Fred-Spots MEM NMP ⁴	VA	NE	7,253.59	85.69	0.00	7,339.28	13.20	1,029.45	1,042.65	8,381.93

Table 10. 2009 Listing of Acreage (continued)

Area Name	State	Region	Federal Area				Non-Federal Land			Gross Area Acres
			Fee Acres	Less Than Fee Acres	Other Fee Acres	Sub-Total Acres	Other Public Acres	Private Acres	Sub-total Acres	
Frederick Douglass NHS	DC	NC	8.57	0.00	0.00	8.57	0.00	0.00	0.00	8.57
Frederick Law Olmsted NHS ⁶	MA	NE	7.06	0.15	0.00	7.21	0.00	0.00	0.00	7.21
Friendship Hill NHS	PA	NE	661.44	0.00	0.00	661.44	0.00	13.12	13.12	674.56
Ft Bowie NHS	AZ	IM	999.45	0.00	0.00	999.45	0.00	0.00	0.00	999.45
Ft Caroline NMEM	FL	SE	133.15	0.00	0.00	133.15	0.00	5.24	5.24	138.39
Ft Davis NHS	TX	IM	473.87	0.00	0.00	473.87	0.00	0.00	0.00	473.87
Ft Donelson NB	TN	SE	716.33	0.00	226.49	942.82	16.29	47.16	63.45	1,006.27
Ft Frederica NM	GA	SE	281.02	2.18	0.00	283.20	0.00	1.29	1.29	284.49
Ft Laramie NHS	WY	IM	831.52	0.00	0.00	831.52	0.00	1.33	1.33	832.85
Ft Larned NHS	KS	MW	410.46	269.20	0.00	679.66	38.73	0.00	38.73	718.39
Ft Matanzas NM	FL	SE	298.51	0.00	0.00	298.51	0.00	1.60	1.60	300.11
Ft McHenry NM & HSHRIN	MD	NE	43.26	0.00	0.00	43.26	0.00	0.00	0.00	43.26
Ft Necessity NB	PA	NE	894.47	0.00	0.00	894.47	8.33	0.00	8.33	902.80
Ft Point NHS	CA	PW	29.00	0.00	0.00	29.00	0.00	0.00	0.00	29.00
Ft Pulaski NM	GA	SE	5,365.13	0.00	0.00	5,365.13	257.97	0.00	257.97	5,623.10
Ft Raleigh NHS	NC	SE	355.45	0.00	0.00	355.45	18.09	139.39	157.48	512.93
Ft Scott NHS	KS	MW	16.69	0.00	0.00	16.69	0.00	0.00	0.00	16.69
Ft Smith NHS	AR-OK	MW	31.75	0.41	5.80	37.96	0.54	36.50	37.04	75.00
Ft Stanwix NM	NY	NE	15.52	0.00	0.00	15.52	0.00	0.00	0.00	15.52
Ft Sumter NM	SC	SE	164.60	61.06	4.97	230.63	4.11	0.00	4.11	234.74
Ft Union NM	NM	IM	720.60	0.00	0.00	720.60	0.00	0.00	0.00	720.60
Ft Union Trading Post NHS	ND-MT	MW	304.78	123.43	0.00	428.21	1.40	12.42	13.82	442.03
Ft Vancouver NHS	WA	PW	164.70	0.63	25.95	191.28	2.94	0.00	2.94	194.22
Ft Washington Park	MD	NC	341.00	0.00	0.00	341.00	0.00	0.00	0.00	341.00
G W Birthplace NM	VA	NE	550.23	0.00	0.00	550.23	0.00	111.50	111.50	661.73
G W Memorial PKWY	MD-VA	NC	6,270.33	444.89	88.17	6,803.39	8.50	110.53	119.03	6,922.42
Gates Of Arctic N PRES	AK	A	948,203.00	0.00	0.00	948,203.00	0.00	405.07	405.07	948,608.07
Gates Of The Arctic NP	AK	A	7,264,011.35	2,328.00	0.00	7,266,339.35	1,235.00	256,323.47	257,558.47	7,523,897.82
Gateway NRA	NJ-NY	NE	20,163.53	1.63	279.24	20,444.40	5,560.04	602.19	6,162.23	26,606.63
Gauley River NRA	WV	NE	4,421.72	17.48	43.36	4,482.56	989.83	6,087.26	7,077.09	11,559.65
General Grant NMEM	NY	NE	0.76	0.00	0.00	0.76	0.00	0.00	0.00	0.76
George R Clark NHP ⁶	IN	MW	26.17	0.00	0.00	26.17	0.00	0.00	0.00	26.17
George Wash. Carver NM	MO	MW	210.00	0.00	0.00	210.00	0.00	0.00	0.00	210.00
Gettysburg NMP ⁴	PA	NE	4,276.77	591.11	0.01	4,867.89	43.20	1,077.64	1,120.84	5,988.73
Gila Cliff Dwelngs NM	NM	IM	533.13	0.00	0.00	533.13	0.00	0.00	0.00	533.13
Glacier Bay N Preserve	AK	A	58,406.00	0.00	0.00	58,406.00	0.00	0.00	0.00	58,406.00
Glacier Bay NP	AK	A	3,221,825.23	0.00	0.00	3,221,825.23	0.00	1,558.43	1,558.43	3,223,383.66
Glacier NP	MT	IM	1,012,834.31	70.28	0.00	1,012,904.59	2.51	415.26	417.77	1,013,322.36
Glen Canyon NRA ⁹	AZ-UT	IM	1,238,621.99	0.00	1,141.85	1,239,763.84	14,352.78	0.00	14,352.78	1,254,116.62
Golden Gate NRA ⁴	CA	PW	30,376.71	22,306.15	536.72	53,219.58	19,578.69	7,223.30	26,801.99	80,021.57
Golden Spike NHS	UT	IM	2,203.20	0.00	0.00	2,203.20	0.00	532.08	532.08	2,735.28

Table 10. 2009 Listing of Acreage (continued)

Area Name	State	Region	Federal Area				Non-Federal Land			Gross Area Acres
			Fee Acres	Less Than Fee Acres	Other Fee Acres	Sub-Total Acres	Other Public Acres	Private Acres	Sub-total Acres	
Governors Island NM	NY	NE	22.27	0.01	0.00	22.28	0.00	0.50	0.50	22.78
Grand Canyon NP	AZ	IM	1,180,862.78	0.00	0.00	1,180,862.78	11,860.00	24,680.54	36,540.54	1,217,403.32
Grand Portage NM	MN	MW	709.97	0.00	0.00	709.97	0.00	0.00	0.00	709.97
Grand Teton NP	WY	IM	272,751.26	8.85	34,984.62	307,744.73	1,379.66	919.97	2,299.63	310,044.36
Grant-Kohrs Ranch NHS	MT	IM	1,325.83	165.63	0.00	1,491.46	69.47	57.45	126.92	1,618.38
Great Basin NP	NV	PW	77,180.00	0.00	0.00	77,180.00	0.00	0.00	0.00	77,180.00
Great Egg Harbor N. River	NJ	NE	0.00	0.00	0.00	0.00	43,311.42	0.00	43,311.42	43,311.42
Great Sand Dunes N PRES	CO	IM	41,686.00	0.00	0.00	41,686.00	0.00	0.00	0.00	41,686.00
Great Sand Dunes NP	CO	IM	44,246.37	0.00	0.00	44,246.37	0.00	0.00	0.00	44,246.37
Great Smoky Mts NP	TN-NC	SE	521,895.56	92.42	0.00	521,987.98	0.00	431.17	431.17	522,419.15
Greenbelt Park	MD	NC	1,105.79	0.00	0.00	1,105.79	58.30	11.33	69.63	1,175.42
Guadalupe MTS NP	TX	IM	86,189.97	0.00	0.00	86,189.97	0.00	226.00	226.00	86,415.97
Guilford Courths NMP	NC	SE	229.57	0.00	0.00	229.57	0.00	0.00	0.00	229.57
Gulf Islands NS ⁶	FL-MS	SE	95,061.38	2.09	4,553.25	99,616.72	37,655.56	718.69	38,374.25	137,990.97
Hagerman Fossil Beds	ID	PW	546.93	0.00	3,787.72	4,334.65	0.00	16.50	16.50	4,351.15
Haleakala NP	HI	PW	33,222.45	0.00	0.00	33,222.45	0.15	0.00	0.15	33,222.60
Hamilton Grange NMEM ⁶	NY	NE	0.11	0.93	0.00	1.04	0.00	0.00	0.00	1.04
Hampton NHS	MD	NE	62.04	0.00	0.00	62.04	0.00	0.00	0.00	62.04
Harpers Ferry NHP	MD-VA-WV	NC	3,150.73	53.67	267.46	3,471.86	60.32	128.55	188.87	3,660.73
Harry S Truman NHS	MO	MW	10.49	0.00	0.00	10.49	0.00	0.00	0.00	10.49
Hawaii Volcanoes NP	HI 3/	PW	323,431.38	0.00	0.00	323,431.38	0.00	0.00	0.00	323,431.38
Herbert Hoover NHS	IA	MW	181.11	0.00	0.00	181.11	4.59	1.10	5.69	186.80
Hohokam Pima NM	AZ	IM	0.00	0.00	0.00	0.00	0.00	1,690.00	1,690.00	1,690.00
Home Of F D R NHS	NY	NE	720.68	53.93	17.31	791.92	0.00	0.00	0.00	791.92
Homestead NM Of Americ	NE	MW	181.11	24.07	0.00	205.18	5.91	0.00	5.91	211.09
Hopewell Culture NHP	OH	MW	947.17	8.05	0.00	955.22	0.00	215.08	215.08	1,170.30
Hopewell Furnace NHS	PA	NE	848.06	0.00	0.00	848.06	0.00	0.00	0.00	848.06
Horseshoe Bend NMP	AL	SE	2,040.00	0.00	0.00	2,040.00	0.00	0.00	0.00	2,040.00
Hot Springs NP	AR	MW	4,937.97	0.00	0.00	4,937.97	345.81	265.97	611.78	5,549.75
Hovenweep NM	CO-UT	IM	784.93	0.00	0.00	784.93	0.00	0.00	0.00	784.93
Hubbell T P NHS	AZ	IM	160.09	0.00	0.00	160.09	0.00	0.00	0.00	160.09
Independence NHP	PA	NE	34.14	0.60	0.00	34.74	4.95	5.16	10.11	44.85
Indiana Dunes NL	IN	MW	10,382.95	498.53	0.00	10,881.48	3,275.45	995.18	4,270.63	15,152.11
Isle Royale NP	MI	MW	539,281.87	0.00	0.00	539,281.87	32,508.24	0.00	32,508.24	571,790.11
J F Kennedy NHS	MA	NE	0.09	0.00	0.00	0.09	0.00	0.00	0.00	0.09
James A Garfield NHS	OH	MW	7.82	0.00	0.00	7.82	0.00	0.00	0.00	7.82
JD Rockefeller MEM PKWY	WY	IM	23,777.22	0.00	0.00	23,777.22	0.00	0.00	0.00	23,777.22
Jean Lafitte NHP &PRES	LA	SE	17,465.90	0.40	0.00	17,466.30	2,050.68	3,466.38	5,517.06	22,983.36
Jefferson N Expan MEM	MO-IL	MW	85.46	5.50	0.00	90.96	0.00	0.00	0.00	90.96
Jewel Cave NM	SD	MW	1,273.51	0.00	0.00	1,273.51	0.00	0.00	0.00	1,273.51
Jimmy Carter NHS	GA	SE	36.81	8.81	1.92	47.54	0.00	24.67	24.67	72.21

Table 10. 2009 Listing of Acreage (continued)

Area Name	State	Region	Federal Area				Non-Federal Land			Gross Area Acres
			Fee Acres	Less Than Fee Acres	Other Fee Acres	Sub-Total Acres	Other Public Acres	Private Acres	Sub-total Acres	
John Day Fos Beds NM	OR	PW	7,082.05	1,403.05	4,969.77	13,454.87	22.23	467.32	489.55	13,944.42
John Muir NHS	CA	PW	335.99	0.00	0.00	335.99	6.93	1.94	8.87	344.86
Johnstown Flood NMEM	PA	NE	166.12	1.24	0.00	167.36	5.55	5.20	10.75	178.11
Joshua Tree NP	CA	PW	771,778.20	0.00	25.40	771,803.60	2,572.74	16,259.40	18,832.14	790,635.74
Kalaupapa NHP	HI	PW	22.88	0.00	0.00	22.88	10,684.00	72.00	10,756.00	10,778.88
Kaloko-Honokohau NHP	HI	PW	615.90	0.00	0.00	615.90	518.83	26.18	545.01	1,160.91
Katmai N Preserve	AK	A	409,770.38	0.00	0.00	409,770.38	512.00	8,416.82	8,928.82	418,699.20
Katmai NP	AK	A	3,611,529.37	20.43	7.50	3,611,557.30	50,172.00	12,649.06	62,821.06	3,674,378.36
Kenai Fjords NP	AK	A	595,433.07	6,068.13	0.00	601,501.20	19,302.00	49,180.82	68,482.82	669,984.02
Kennesaw Mt NBP	GA	SE	2,846.27	0.00	0.00	2,846.27	6.37	0.00	6.37	2,852.64
Keweenaw NHP	MI	MW	135.35	0.00	0.00	135.35	0.00	1,734.97	1,734.97	1,870.32
Kings Canyon NP	CA	PW	460,171.05	0.00	1,675.00	461,846.05	0.00	55.15	55.15	461,901.20
Kings Mt NMP	SC	SE	3,945.29	0.00	0.00	3,945.29	0.00	0.00	0.00	3,945.29
Klondike Gold Rush NHP ³	AK-WA	A	3,419.89	0.00	0.00	3,419.89	9,199.38	377.01	9,576.39	12,996.28
Knife River Indian Vil NH	ND	MW	1,457.24	136.41	0.00	1,593.65	0.00	164.70	164.70	1,758.35
Kobuk Valley NP	AK	A	1,713,522.98	5.00	0.00	1,713,527.98	896.00	36,292.52	37,188.52	1,750,716.50
Koren War Veterans MEM	DC	NC	2.20	0.00	0.00	2.20	0.00	0.00	0.00	2.20
Lake Chelan NRA	WA	PW	59,333.21	11.83	0.00	59,345.04	2,209.03	394.63	2,603.66	61,948.70
Lake Clark N Preserve	AK	A	1,293,844.92	9,352.79	0.00	1,303,197.71	13,437.71	93,656.92	107,094.63	1,410,292.34
Lake Clark NP	AK	A	2,533,059.41	0.00	0.00	2,533,059.41	0.00	86,673.35	86,673.35	2,619,732.76
Lake Mead NRA	AZ-NV 4/	PW	1,392,298.55	41.31	78,230.76	1,470,570.62	2,482.08	22,611.30	25,093.38	1,495,664.00
Lake Meredith NRA	TX	IM	43,964.63	0.00	1,013.00	44,977.63	0.00	0.00	0.00	44,977.63
Lake Roosevelt NRA ⁵	WA 1/	PW	331.31	0.00	100,059.00	100,390.31	0.00	0.00	0.00	100,390.31
Lassen Volcanic NP	CA	PW	106,368.14	0.00	0.00	106,368.14	0.00	4.22	4.22	106,372.36
Lava Beds NM	CA	PW	46,559.87	0.00	0.00	46,559.87	0.00	0.00	0.00	46,559.87
LBJ MEM Grove On The Potomac	DC	NC	17.00	0.00	0.00	17.00	0.00	0.00	0.00	17.00
Lewis And Clark NHP	OR	PW	2,622.58	0.00	0.00	2,622.58	273.40	407.43	680.83	3,303.41
Lincoln Boyhood NMEM	IN	MW	180.81	0.00	0.00	180.81	10.94	7.90	18.84	199.65
Lincoln Home NHS	IL	MW	12.03	0.00	0.00	12.03	0.00	0.21	0.21	12.24
Lincoln Memorial	DC	NC	107.43	0.00	0.00	107.43	0.00	0.00	0.00	107.43
Little Bighorn Battlefld	MT	IM	765.34	0.00	0.00	765.34	0.00	0.00	0.00	765.34
Little River Canyon	AL	SE	10,338.15	0.00	0.00	10,338.15	3,294.81	1,656.00	4,950.81	15,288.96
Little Rock Central HS NH	AR	MW	2.22	0.00	0.00	2.22	0.00	25.06	25.06	27.28
Longfellow NHS	MA	NE	1.98	0.00	0.00	1.98	0.00	0.00	0.00	1.98
Lowell NHP	MA	NE	10.62	21.04	0.00	31.66	4.46	105.17	109.63	141.29
Lower St Croix NSR	MN-WI	MW	4,791.07	3,488.93	0.00	8,280.00	4,624.64	12,374.29	16,998.93	25,278.93
Lyndon B Johnson NHP ⁴	TX	IM	672.27	1.93	0.00	674.20	0.06	895.89	895.95	1,570.15
M McLeod Bethune House NHS	DC	NC	0.07	0.00	0.00	0.07	0.00	0.00	0.00	0.07
Maggie L Walker NHS	VA	NE	0.36	0.00	0.00	0.36	0.00	0.93	0.93	1.29
Mammoth Cave NP	KY	SE	52,003.24	0.00	0.00	52,003.24	814.75	12.20	826.95	52,830.19
Manassas NBP	VA	NC	4,390.82	22.33	0.00	4,413.15	0.00	660.02	660.02	5,073.17

Table 10. 2009 Listing of Acreage (continued)

Area Name	State	Region	Federal Area				Non-Federal Land			Gross Area Acres
			Fee Acres	Less Than Fee Acres	Other Fee Acres	Sub-Total Acres	Other Public Acres	Private Acres	Sub-total Acres	
Manzanar NHS	CA	PW	813.81	0.00	0.00	813.81	0.00	0.00	0.00	813.81
Marsh-Billings-Rockefeller N	VT	NE	555.07	0.00	0.00	555.07	0.00	88.00	88.00	643.07
Martin L King, Jr, NHS	GA	SE	13.62	0.00	0.00	13.62	10.22	14.69	24.91	38.53
Martin Van Buren NHS	NY	NE	21.07	18.24	0.00	39.31	0.24	245.38	245.62	284.93
Mesa Verde NP	CO	IM	52,215.63	0.00	0.00	52,215.63	41.01	228.53	269.54	52,485.17
Minidoka Internment NM	ID	PW	72.75	0.00	0.00	72.75	0.00	0.00	0.00	72.75
Minute Man NHP	MA	NE	783.24	7.47	3.32	794.03	121.52	103.79	225.31	1,019.34
Minuteman Missile NHS	SD	MW	10.57	0.78	0.00	11.35	0.00	3.65	3.65	15.00
Mississippi N RVR & RA	MN	MW	62.42	0.00	0.00	62.42	0.00	53,712.58	53,712.58	53,775.00
Missouri N REC River	SD-NE	MW	247.68	0.00	0.00	247.68	0.00	33,911.32	33,911.32	34,159.00
Mojave National Preserve	CA	PW	1,466,278.89	0.00	0.00	1,466,278.89	42,217.70	26,702.51	68,920.21	1,535,199.10
Monocacy NB	MD	NC	1,354.87	195.37	0.00	1,550.24	51.82	44.95	96.77	1,647.01
Montezuma Castle NM	AZ	IM	842.44	0.00	0.00	842.44	0.00	16.83	16.83	859.27
Moore's Creek NB	NC	SE	85.35	2.40	0.00	87.75	0.00	0.00	0.00	87.75
Morristown NHP	NJ	NE	1,704.74	0.95	0.00	1,705.69	0.00	5.03	5.03	1,710.72
Mt Rainier NP	WA	PW	235,838.85	0.00	0.00	235,838.85	20.70	521.19	541.89	236,380.74
Mt Rushmore NMEM	SD	MW	1,238.45	0.00	0.00	1,238.45	40.00	0.00	40.00	1,278.45
Muir Woods NM	CA	PW	522.98	0.00	0.00	522.98	30.57	0.00	30.57	553.55
Natchez NHP	MS	SE	85.50	0.00	0.00	85.50	5.42	17.30	22.72	108.22
Natchez Trace NS TRAIL	MS-TN	SE	0.00	0.00	0.00	0.00	0.00	10,995.00	10,995.00	10,995.00
Natchez Trace PKWY	TN TO MS	SE	46,304.61	5,887.28	0.00	52,191.89	49.95	60.16	110.11	52,302.00
National Capital Parks ^{3,7}	DC-MD-VA	NC	6,437.47	49.71	0.41	6,487.59	185.86	52.77	238.63	6,726.22
National Mall	DC	NC	146.35	0.00	0.00	146.35	0.00	0.00	0.00	146.35
National WWII Memorial	DC	NC	0.00	0.00	0.00	0.00	0.00	0.00	0.00	0.00
Natural Bridges NM	UT	IM	7,620.49	16.00	0.00	7,636.49	0.00	0.00	0.00	7,636.49
Navajo NM	AZ	IM	360.00	0.00	0.00	360.00	0.00	0.00	0.00	360.00
New Bedford Whaling	MA	NE	0.34	0.00	0.00	0.34	0.00	33.66	33.66	34.00
New Orleans Jazz NHP	LA	SE	0.00	0.00	0.00	0.00	5.13	0.00	5.13	5.13
New River Gorge N RVR	WV	NE	52,959.91	163.92	0.00	53,123.83	4,607.99	14,453.91	19,061.90	72,185.73
Nez Perce NHP	ID	PW	1,968.18	1,252.75	5.12	3,226.05	261.20	1,082.42	1,343.62	4,569.67
Nicodemus NHS	KS	MW	0.17	0.00	0.00	0.17	0.00	4.43	4.43	4.60
Ninety Six NHS	SC	SE	1,021.94	0.00	0.00	1,021.94	0.00	0.00	0.00	1,021.94
Niobrara N. Scenic River	NE	MW	0.00	0.00	981.36	981.36	349.35	27,770.31	28,119.66	29,101.02
Noatak N Preserve	AK	A	6,548,726.98	0.00	0.00	6,548,726.98	1,197.00	37,147.41	38,344.41	6,587,071.39
North Cascades NP	WA	PW	504,654.18	0.00	0.00	504,654.18	0.00	126.76	126.76	504,780.94
NP Of American Samoa	SAMOA	PW	0.00	0.00	0.00	0.00	4,500.00	4,500.00	9,000.00	9,000.00
Obed Wild & Scenic Rvr	TN	SE	2,632.18	1,081.12	0.00	3,713.30	326.40	1,033.65	1,360.05	5,073.35
Ocmulgee NM	GA	SE	701.54	0.00	0.00	701.54	0.00	0.00	0.00	701.54
Olympic NP	WA	PW	913,372.68	64.88	100.00	913,537.56	8,749.47	362.96	9,112.43	922,649.99
Oregon Caves NM	OR	PW	484.03	0.00	0.00	484.03	0.00	3.95	3.95	487.98
Organ Pipe Cactus NM	AZ	IM	329,114.50	24.42	226.37	329,365.29	1,280.00	43.57	1,323.57	330,688.86

Table 10. 2009 Listing of Acreage (continued)

Area Name	State	Region	Federal Area				Non-Federal Land			Gross Area Acres
			Fee Acres	Less Than Fee Acres	Other Fee Acres	Sub-Total Acres	Other Public Acres	Private Acres	Sub-total Acres	
Ozark NS Riverways	MO	MW	52,111.73	9,256.69	0.00	61,368.42	14,062.59	5,354.03	19,416.62	80,785.04
Padre Island NS	TX	IM	130,355.46	0.00	0.00	130,355.46	78.81	0.00	78.81	130,434.27
Palo Alto Btlfd NHS ¹	TX	IM	1,314.77	0.00	0.00	1,314.77	0.00	2,127.09	2,127.09	3,441.86
Pea Ridge NMP	AR	MW	4,278.75	0.00	0.00	4,278.75	21.60	0.00	21.60	4,300.35
Pecos NHP	NM	IM	6,355.19	0.00	0.00	6,355.19	22.36	291.86	314.22	6,669.41
Pennsylvania Ave NHS	DC	NC	0.00	0.26	0.00	0.26	0.00	0.00	0.00	0.26
Perry's Vic & Int Peace M	OH	MW	24.84	0.14	0.00	24.98	0.00	0.41	0.41	25.39
Petersburg NB	VA	NE	2,656.14	0.12	1.17	2,657.43	0.00	82.29	82.29	2,739.72
Petrified Forest NP	AZ	IM	109,001.98	0.00	0.00	109,001.98	36,145.87	76,473.00	112,618.87	221,620.85
Petroglyph NM	NM	IM	2,929.44	0.00	0.00	2,929.44	2,927.97	1,374.22	4,302.19	7,231.63
Pictured Rocks NL	MI	MW	35,667.56	21.30	40.00	35,728.86	13,939.75	23,567.22	37,506.97	73,235.83
Pinnacles NM	CA	PW	26,479.81	0.31	0.00	26,480.12	0.00	10.82	10.82	26,490.94
Pipe Spring NM	AZ	IM	40.00	0.00	0.00	40.00	0.00	0.00	0.00	40.00
Pipestone NM	MN	MW	281.78	0.00	0.00	281.78	0.00	0.00	0.00	281.78
Piscataway Park	MD	NC	1,772.85	2,817.72	0.00	4,590.57	0.00	35.80	35.80	4,626.37
Point Reyes NS	CA	PW	64,856.50	42.98	334.87	65,234.35	2,696.98	3,097.08	5,794.06	71,028.41
Potomac Heritage NST	PA TO VA	NC	0.00	0.00	0.00	0.00	0.00	0.00	0.00	0.00
Poverty Point NM	LA	SE	0.00	0.00	0.00	0.00	415.14	495.71	910.85	910.85
Prince Wm Forest Park	VA	NC	14,536.21	41.89	0.00	14,578.10	0.00	1,481.20	1,481.20	16,059.30
Pu'uhonua O Honaunau	HI	PW	418.78	1.02	0.00	419.80	0.00	0.00	0.00	419.80
Puukohola Heiau NHS	HI	PW	60.95	0.00	0.00	60.95	25.29	0.00	25.29	86.24
R Reagan Boyhood Home NHS	IL	MW	0.00	0.00	0.00	0.00	0.00	1.01	1.01	1.01
Rainbow Bridge NM	UT	IM	160.00	0.00	0.00	160.00	0.00	0.00	0.00	160.00
Redwood NP	CA	PW	77,432.27	28.06	319.59	77,779.92	34,648.31	153.72	34,802.03	112,581.95
Richmond NBP	VA	NE	2,224.55	2.56	0.00	2,227.11	2.48	4,901.04	4,903.52	7,130.63
Rio Grande Wild & SR	TX	IM	0.00	0.00	0.00	0.00	2,150.00	7,450.00	9,600.00	9,600.00
Rock Creek Park	DC	NC	1,755.21	0.00	0.00	1,755.21	0.00	0.00	0.00	1,755.21
Rocky Mt NP	CO	IM	264,167.14	1,224.76	0.00	265,391.90	117.04	249.47	366.51	265,758.41
Roger Williams NMEM	RI	NE	4.56	0.00	0.00	4.56	0.00	0.00	0.00	4.56
Rosie The Riveter NHP	CA	PW	0.00	0.00	0.00	0.00	145.19	0.00	145.19	145.19
Ross Lake NRA	WA	PW	115,959.59	0.00	0.00	115,959.59	1,609.37	5.63	1,615.00	117,574.59
Russell Cave NM	AL	SE	310.45	0.00	0.00	310.45	0.00	0.00	0.00	310.45
Sagamore Hill NHS	NY	NE	83.02	0.00	0.00	83.02	0.00	0.00	0.00	83.02
Saguaro NP	AZ	IM	87,512.43	13.64	0.00	87,526.07	2,998.71	914.93	3,913.64	91,439.71
Saint Croix NSR	MN-WI	MW	20,263.56	11,188.29	804.44	32,256.29	30,679.45	4,533.47	35,212.92	67,469.21
Saint-Gaudens NHS	NH	NE	148.15	0.00	0.00	148.15	0.00	0.00	0.00	148.15
Salem Maritime NHS	MA	NE	8.93	0.00	0.00	8.93	0.00	0.09	0.09	9.02
Salinas Pueblo MSNS NM	NM	IM	979.87	5.26	0.00	985.13	5.68	80.61	86.29	1,071.42
Salt Rvr Bay NHP	VI	SE	217.95	0.00	0.00	217.95	659.49	108.32	767.81	985.76
San Antonio Missions NHP	TX	IM	390.77	69.68	0.00	460.45	179.09	186.38	365.47	825.92
San Fran Maritime NHP	CA	PW	28.70	0.00	0.00	28.70	21.16	0.00	21.16	49.86

Table 10. 2009 Listing of Acreage (continued)

Area Name	State	Region	Federal Area				Non-Federal Land			Gross Area Acres
			Fee Acres	Less Than Fee Acres	Other Fee Acres	Sub-Total Acres	Other Public Acres	Private Acres	Sub-total Acres	
San Juan Island NHP	WA	PW	1,725.45	0.00	0.00	1,725.45	26.54	0.00	26.54	1,751.99
San Juan NHS	PR	SE	53.20	0.00	0.00	53.20	21.93	0.00	21.93	75.13
Sand Creek Massacre NHS	CO	IM	2,385.43	0.00	0.00	2,385.43	640.00	9,557.91	10,197.91	12,583.34
Santa Monica Mts NRA	CA	PW	23,520.51	33.38	16.45	23,570.34	46,912.47	86,189.78	133,102.25	156,672.59
Saratoga NHP	NY	NE	2,884.55	2.04	0.00	2,886.59	93.35	414.26	507.61	3,394.20
Saugus Iron Works NHS ⁶	MA	NE	8.51	0.00	0.00	8.51	0.00	0.00	0.00	8.51
Scotts Bluff NM	NE	MW	2,951.23	0.27	0.00	2,951.50	5.95	47.36	53.31	3,004.81
Sequoia NP	CA	PW	403,875.05	15.36	0.00	403,890.41	4.46	168.13	172.59	404,063.00
Shenandoah NP	VA	NE	197,442.12	798.47	0.00	198,240.59	72.11	787.01	859.12	199,099.71
Shiloh NMP	TN	SE	4,134.41	0.00	0.00	4,134.41	67.12	1,979.81	2,046.93	6,181.34
Sitka NHP	AK	A	61.97	49.53	0.00	111.50	0.53	0.06	0.59	112.09
Sleeping Bear Dunes NL	MI	MW	56,632.21	710.41	1.85	57,344.47	12,067.03	1,880.40	13,947.43	71,291.90
Springfield Armory NHS	MA	NE	20.32	0.28	0.00	20.60	34.33	0.00	34.33	54.93
St Croix Island IHS	ME	NE	28.44	0.00	0.00	28.44	0.00	16.46	16.46	44.90
St Paul's Church NHS	NY	NE	6.13	0.00	0.00	6.13	0.00	0.00	0.00	6.13
Statue Of Liberty NM	NY-NJ	NE	58.38	0.00	0.00	58.38	0.00	2.48	2.48	60.86
Steamtown NHS	PA	NE	51.29	0.00	0.00	51.29	10.55	0.64	11.19	62.48
Stones River NB	TN	SE	645.27	0.00	0.00	645.27	13.07	51.13	64.20	709.47
Sunset Crater Volc NM	AZ	IM	3,040.00	0.00	0.00	3,040.00	0.00	0.00	0.00	3,040.00
T Kosciuszko NMEM	PA	NE	0.02	0.00	0.00	0.02	0.00	0.00	0.00	0.02
T Roosevelt Birthplace NHS	NY	NE	0.11	0.00	0.00	0.11	0.00	0.00	0.00	0.11
T Roosevelt Inaug NHS ⁶	NY	NE	1.03	0.00	0.00	1.03	0.00	0.00	0.00	1.03
T Roosevelt Island	DC	NC	88.50	0.00	0.00	88.50	0.00	0.00	0.00	88.50
T Roosevelt NP	ND	MW	69,550.88	0.00	151.24	69,702.12	54.33	690.44	744.77	70,446.89
Tallgrass Prairie NP	KS	MW	32.26	0.00	0.00	32.26	0.00	10,861.74	10,861.74	10,894.00
Thomas Edison NHP ¹	NJ	NE	21.25	0.00	0.00	21.25	0.00	0.00	0.00	21.25
Thomas Jefferson MEM	DC	NC	18.36	0.00	0.00	18.36	0.00	0.00	0.00	18.36
Thomas Stone NHS	MD	NE	321.97	0.00	0.00	321.97	0.00	6.28	6.28	328.25
Timpanogos Cave NM	UT	IM	250.00	0.00	0.00	250.00	0.00	0.00	0.00	250.00
Timucuan Eco & H PRES	FL	SE	7,533.31	1,330.00	0.00	8,863.31	16,022.97	21,409.12	37,432.09	46,295.40
Tonto NM	AZ	IM	1,120.00	0.00	0.00	1,120.00	0.00	0.00	0.00	1,120.00
Tumacacori NHP	AZ	IM	357.74	0.00	0.00	357.74	0.64	1.94	2.58	360.32
Tupelo NB	MS	SE	1.00	0.00	0.00	1.00	0.00	0.00	0.00	1.00
Tuskegee Airmen NHS	AL	SE	44.71	0.00	0.00	44.71	0.40	44.57	44.97	89.68
Tuskegee Institute NHS	AL	SE	7.90	1.02	0.00	8.92	0.00	49.00	49.00	57.92
Tuzigoot NM	AZ	IM	366.42	15.11	0.00	381.53	0.00	430.36	430.36	811.89
Ulysses S Grant NHS	MO	MW	9.60	0.00	0.00	9.60	0.00	0.00	0.00	9.60
Upper Del Scenic & R RVR	NY-PA	NE	30.47	0.28	0.00	30.75	1,249.96	73,718.85	74,968.81	74,999.56
Valley Forge NHP	PA	NE	3,059.80	37.06	0.00	3,096.86	218.03	152.81	370.84	3,467.70
Vanderbilt Mansion NHS	NY	NE	211.65	0.00	0.00	211.65	0.00	0.00	0.00	211.65
Vicksburg NMP	MS	SE	1,737.01	2.55	0.00	1,739.56	4.84	50.61	55.45	1,795.01

Table 10. 2009 Listing of Acreage (continued)

Area Name	State	Region	Federal Area				Non-Federal Land			Gross Area Acres
			Fee Acres	Less Than Fee Acres	Other Fee Acres	Sub-Total Acres	Other Public Acres	Private Acres	Sub-total Acres	
Vietnam Veterans MEM	DC	NC	2.00	0.00	0.00	2.00	0.00	0.00	0.00	2.00
Virgin Islands Coral REEF	VI	SE	0.00	0.00	12,708.10	12,708.10	0.00	0.00	0.00	12,708.10
Virgin Islands NP	VI	SE	12,680.76	3.00	0.00	12,683.76	134.07	1,919.13	2,053.20	14,736.96
Voyageurs NP	MN	MW	133,001.62	0.00	139.03	133,140.65	83,914.92	1,154.81	85,069.73	218,210.38
Walnut Canyon NM	AZ	IM	3,238.42	0.00	0.00	3,238.42	0.00	290.84	290.84	3,529.26
War In The Pacific NHP	GUAM	PW	957.52	0.00	0.00	957.52	871.67	207.79	1,079.46	2,036.98
Washington Monument	DC	NC	106.01	0.00	0.00	106.01	0.00	0.00	0.00	106.01
Washita Battlefield NHS	OK	IM	312.20	0.00	0.00	312.20	3.00	0.00	3.00	315.20
Weir Farms NHS	CT	NE	68.05	0.00	0.00	68.05	0.00	6.15	6.15	74.20
Whiskeytown-S-T NRA	CA 5/	PW	42,463.16	0.00	0.00	42,463.16	28.93	11.16	40.09	42,503.25
White House	DC	NC	18.07	0.00	0.00	18.07	0.00	0.00	0.00	18.07
White Sands NM	NM	IM	141,209.24	0.00	2,524.01	143,733.25	0.00	0.00	0.00	143,733.25
Whitman Mission NHS	WA	PW	138.53	0.00	0.00	138.53	0.00	0.00	0.00	138.53
William H Taft NHS	OH	MW	1.70	0.00	0.00	1.70	1.07	0.33	1.40	3.10
Wilson's Creek NB	MO	MW	1,955.20	0.00	0.00	1,955.20	7.08	406.33	413.41	2,368.61
Wind Cave NP ⁴	SD	MW	28,292.08	2.95	0.00	28,295.03	0.00	0.00	0.00	28,295.03
Wolf Trap NP for Perf Arts	VA	NC	117.89	12.39	0.00	130.28	0.00	0.00	0.00	130.28
Women's Rights NHP	NY	NE	7.03	0.09	0.00	7.12	0.10	0.22	0.32	7.44
Wrangell-St Elias N PRES	AK	A	4,309,153.22	0.00	0.00	4,309,153.22	57,901.60	485,596.91	543,498.51	4,852,651.73
Wrangell-St Elias NP	AK	A	7,978,732.32	0.00	0.00	7,978,732.32	17,585.84	326,829.43	344,415.27	8,323,147.59
Wright Brothers NMEM	NC	SE	421.81	0.00	0.00	421.81	6.63	0.00	6.63	428.44
Wupatki NM	AZ	IM	35,401.73	20.40	0.00	35,422.13	0.00	0.00	0.00	35,422.13
WWII Valor in the Pacific NM	HI-CA	PW	0.00	0.00	38.55	38.55	15.00	0.00	15.00	53.55
Yellowstone NP	ID-MT-WY	IM	2,219,789.13	0.00	0.00	2,219,789.13	0.00	1.58	1.58	2,219,790.71
Yosemite NP	CA	PW	759,210.11	10.83	319.11	759,540.05	1,502.70	224.75	1,727.45	761,267.50
Yucca House NM	CO	IM	33.87	0.00	0.00	33.87	0.00	0.00	0.00	33.87
Yukon-Charley Rivers N PR	AK	A	2,237,354.98	0.00	0.00	2,237,354.98	4,838.82	284,318.51	289,157.33	2,526,512.31
Zion NP	UT	IM	143,068.03	0.00	0.00	143,068.03	0.00	3,529.37	3,529.37	146,597.40
TOTAL ACRES			79,706,435.66	276,870.08	458,309.89	80,441,615.63	1,179,265.72	2,757,991.58	3,937,257.30	84,378,872.93

- (1) Curecanti NRA, and Lake Roosevelt NRA are administered under cooperative agreement with other federal agencies
- (2) Assateague Island NS Federal Land includes 9,448.00 acres administered by U.S. Fish and Wildlife Service.
- (3) Hawaii volcanoes NP Federal Land includes 9,654.67 acres under the custody and administration of the NPS with their inclusion in the park pending.
- (4) Lake Mead NRA Federal Land includes 220,000 acres in the Hualapai Indian Reservation.
- (5) Whiskeytown-S-T NRA Shasta and Trinity portion administered by the Forest Service. Only National Park Service acreage shown.
- (6) Appalachian NS Trail – Management of Trail handled by the Washington office.
- (7) For total acreage of Big Cypress National Reserve – Add the acreage for Big Cypress National Preserve and Big Cypress Addition.
- (8) For total acreage of Everglades National Park – Add the acreage for Everglades National Park and Everglades Expansion.

Table 11. 2009 Summary of Acreage by Type of Area

Type of Area	Federal Land				Non-Federal Land			Gross Area Acres
	Fee Acres	Less Than Fee Acres	Other Fee Acres	Sub-Total Acres	Other Public Acres	Private Acres	Sub-total Acres	
International Historic Site	28.44	0.00	0.00	28.44	0.00	16.46	16.46	44.90
National Battlefield Parks	9,461.64	24.89	0.00	9,486.53	8.85	5,561.06	5,569.91	15,056.44
National Battlefield Site	1.00	0.00	0.00	1.00	0.00	0.00	0.00	1.00
National Battlefields	11,746.50	949.29	227.66	12,923.45	164.20	1,457.52	1,621.72	14,545.17
National Historic Sites	21,203.60	783.27	50.98	22,037.85	922.23	11,020.33	11,942.56	33,980.41
National Historical Parks	130,460.20	3,556.30	360.31	134,376.81	28,716.14	19,206.87	47,923.01	182,299.82
National Lakeshores	144,843.37	1,230.24	41.85	146,115.46	56,488.93	26,447.34	82,936.27	229,051.73
National Memorials	9,428.00	7.81	138.34	9,574.15	63.12	1,000.49	1,063.61	10,637.76
National Military Parks	36,855.77	692.24	0.01	37,548.02	149.96	4,200.55	4,350.51	41,898.53
National Monuments	1,840,938.39	14,829.68	43,417.70	1,899,185.77	5,898.86	121,645.98	127,544.84	2,026,730.61
National Parks	50,393,545.33	148,821.86	49,269.53	50,591,636.72	497,192.44	1,006,187.97	1,503,380.41	52,095,017.13
National Preserves	22,887,103.35	10,696.13	0.00	22,897,799.48	215,979.67	1,070,553.24	1,286,532.91	24,184,332.39
National Recreation Areas	3,147,472.51	23,717.95	243,100.50	3,414,290.96	106,308.76	179,680.51	285,989.27	3,700,280.23
National Reserves	10,363.85	2,070.18	2.50	12,436.53	708.00	20,595.67	21,303.67	33,740.20
National Rivers	309,860.64	12,815.07	21.13	322,696.84	24,258.72	79,393.86	103,652.58	426,349.42
National Scenic Trails	99,025.59	13,996.92	58,453.89	171,476.40	49,183.71	26,831.86	76,015.57	247,491.97
National Seashores	404,437.99	14,890.18	61,226.11	480,554.28	106,667.94	9,341.48	116,009.42	596,563.70
National Wild & Scenic Rvrs	59,430.51	15,758.62	1,785.80	76,974.93	85,990.55	162,975.32	248,965.87	325,940.80
Parks (Other)	32,091.58	2,921.71	0.41	35,013.70	244.16	1,582.23	1,826.39	36,840.09
Parkways	158,137.40	9,107.74	213.17	167,458.31	319.48	10,292.84	10,612.32	178,070.63
TOTAL NPS	79,706,435.66	276,870.08	458,309.89	80,441,615.63	1,179,265.72	2,757,991.58	3,937,257.30	84,378,872.93

Endnotes

Endnotes are defined with fixed numeric identifiers which are meaningful to National Park Service administration.

¹Redesignated areas

- ❑ Thomas Edison NHP re-designated from National Historic Site and added Thomas to name
- ❑ Palo Alto Battlefield NHP re-designated from a National Historic Site
- ❑ Abraham Lincoln Birthplace NHP re-designated from a National Historic Site

³Combined areas reporting separately

- ❑ Data for the following areas *Klondike Gold Rush NHP - Alaska* and *Klondike Gold Rush NHP - Seattle* are reported separately but are classified as *Klondike Gold Rush NHP*
- ❑ Data for the following areas *National Capital Parks Central*, *National Capital Parks East* and *President's Park* are reported separately but are classified as *National Capital Parks Combined*
- ❑ The following area is combined with *National Capital Parks Central*; breakdown is not available: *Constitution Gardens*

⁴Changes in counting procedures (Data for the following areas require special adjustments to be comparable with earlier data):

- ❑ Carl Sandburg Home NHS (changed procedures for counting grounds-only visitors)
- ❑ Chesapeake & Ohio Canal NHP (added 3 new areas to the counting program)
- ❑ Fredericksburg & Spotsylvania NMP (added new counters and corrected reporting problems)
- ❑ Gettysburg NMP (conducted a person-per-vehicle study and updated their multipliers)
- ❑ Golden Gate NRA (added three new areas to the counting program)
- ❑ Lyndon B. Johnson NHP (adjusted counting procedures at the ranch)
- ❑ Wind Cave NP (corrected a reporting factor for their tent and RV campers)

⁵Opening of additional areas (Data for the following areas require special adjustments to be comparable with earlier data):

- ❑ Lake Roosevelt NRA (added group camping area and started reporting a Concession run campground)

⁶Partial or temporary closing (Data for the following areas require special adjustments to be comparable with earlier data):

- ❑ Chaco Culture NHP (partial closure of camping areas due to septic problems)
- ❑ Ford's Theater NHS (opened February after restoration work)
- ❑ Frederick Law Olmsted NHS (closed for restoration)
- ❑ George Rogers Clark NHP (opened October after restoration work)
- ❑ Gulf Islands NS (reopened major areas of the park after being closed by Hurricane Katrina)
- ❑ Hamilton Grange NMEM (closed for restoration)
- ❑ Saugus Iron Works NHS (opened after restoration work)
- ❑ Theodore Roosevelt Inaugural NHS (opened June after restoration work)

⁷**Special events such as anniversaries, civic fairs, significant natural disasters, storm damage, etc.** (Data for the following areas require special adjustments to be comparable with earlier data):

- National Capitol Parks Central (2009 Presidential Inauguration)
- National Park of American Samoa (some areas closed due to Tsunami)

⁹**Data error in previous year(s) (2008)**

- Glen Canyon NRA (reported 996,303 Miscellaneous O/N stays and should have been 1,291,927 in 2008)

Definitions

AFFILIATED AREA – An area administrated in connection with the National Park Service (NPS), which use NPS assistance but is neither federally owned nor directly administered by the NPS.

BACKCOUNTRY – One or more primitive or wilderness areas which are reached primarily by hiking, boating, or horseback.

CAMPGROUND – An area of land designated and developed for use as a camp.

CATEGORY – NPS areas are categorized by their proximity to population centers in the following manner:

- ❑ Mixed Area Park – A park located in a mixture of Outlying Area, Rural Area, Suburban Area, and Urban area.
- ❑ Outlying Area Park – A park located in a Metropolitan Statistical Area (MSA) with a population of less than one million people.
- ❑ Remote Area Park – A park located outside of any MSA and requiring special travel arrangements to reach.
- ❑ Rural Area Park – A park located outside of any MSA and accessible by paved highway, scheduled air or marine transportation service.
- ❑ Suburban Area Park – A park located outside the central city but still within a MSA with a population of greater than one million people.
- ❑ Urban Area Park – A park located within the central city of a MSA.

CLASSIFICATION – Designated names for areas administered by the NPS may be found in the publication, *The National Parks: Index 2005–2007*.

CONCESSIONER – A private company or an individual granted the privilege of providing facilities and services considered necessary by the NPS for accommodating visitors.

CONCESSIONER CAMPGROUND – An element of a concessioner operation involving services for overnight camping.

CONCESSIONER LODGING – An element of a concessioner operation involving facilities for overnight lodging such as hotels, motels, cabins, cottages, trailer villages, and trailer rental.

MISCELLANEOUS OVERNIGHT STAY – Any overnight stay not otherwise defined (sleeping aboard boats, camping in organized groups, and/or any other overnight stays not included in other categories of overnight stays, except inholders, which are non-reportable).

MIXED AREA PARK - See **CATEGORY**.

NATIONAL PARK SERVICE (NPS) – A Department of Interior (DOI) agency which administers approximately two dozen types of federal land, nationally significant for their scenic, natural, scientific, historical, or archeological interest (see **CLASSIFICATION**). The agency was established as a Bureau of the DOI by an Act of Congress on August 25, 1916. The NPS does not administer National Forests (United States Department of Agriculture/Forest Service), Wildlife Refuges (United States Department of Interior/Fish and Wildlife Service), or a variety of other lands available for public use.

NEGLECTIBLE TRANSIT – A brief, incidental entry into a park by passing traffic (vehicular or pedestrian) using NPS administered grounds, roads, or walkways (See **NON-REPORTABLE VISITS**).

NON-RECREATION OVERNIGHT STAY – A reportable non-recreation overnight stay includes leaseholders, line shacks for ranchers, and government personnel (other than NPS employees).

NON-RECREATION VISIT – A reportable non-recreation visit includes through traffic (commuters), persons going to and from inholdings, trades-people with business in the park, and government personnel (other than NPS employees) with business in the park.

NON-REPORTABLE VISIT – The entry into a park by NPS employees, their families, concessioner employees, members of cooperating associations, NPS contractors, and service personnel.

NOT REPORTING – These areas do not report recreation visits to the NPS.

OUTLYING AREA PARK – See **CATEGORY**.

OVERNIGHT STAY – One night within a park by a visitor.

RECREATION VEHICLE – Any enclosed vehicle used for camping which is more elaborate than a simple truck or car, such as pickup truck with camper body, pop-up tent trailer, travel trailer, bus, motor coach, mobile home, etc.

RECREATION VISIT – The entry of a person onto lands or waters administered by the NPS for recreational purposes, excluding government personnel, through traffic (commuters), trades-person, and a person residing within park boundaries.

REGION – A NPS administrative subdivision. The seven NPS regions include the following states:

- ❑ Alaska (AK) – Alaska
- ❑ Intermountain (IM) – Arizona, Colorado, Montana, New Mexico, Oklahoma, Texas, Utah, Wyoming
- ❑ Midwest (MW) – Arkansas, Illinois, Indiana, Iowa, Kansas, Michigan, Minnesota, Missouri, Nebraska, North Dakota, Ohio, South Dakota, Wisconsin
- ❑ National Capital (NC) – Washington, DC, with some units in Maryland, Virginia, West Virginia
- ❑ Northeast (NE) – Connecticut, Delaware, Maryland, Massachusetts, Maine, New Hampshire, New Jersey, New York, Pennsylvania, Rhode Island, Vermont, Virginia, West Virginia (excluding units assigned to National Capital Region in Maryland, Virginia and West Virginia)
- ❑ Pacific West (PW) – American Samoa, California, Guam, Hawaii, Idaho, Nevada, Oregon, Washington
- ❑ Southeast (SE) – Alabama, Florida, Georgia, Kentucky, Louisiana, Mississippi, North Carolina, Puerto Rico, South Carolina, Tennessee, U.S. Virgin Islands

REMOTE AREA PARK – See **CATEGORY**.

RURAL AREA PARK – See **CATEGORY**.

SERVICE PERSONNEL – Non-reportable visits include visits by employees of the NPS who are assigned to the park or are visiting the park in connection with their duty assignments, NPS contractors, concessioner, cooperating associations, and the temporary or permanent members in the households of NPS employees who reside in the park.

SUBURBAN AREA PARK – See **CATEGORY**.

SURBAN AREA PARK – See **CATEGORY**.

VISIT - The entry of any person, except NPS and service personnel, onto lands or waters administered by the NPS. A visit may occur as a recreation visit or a non-recreation visit. A same-day reentry, negligible transit, and an entry to a detached portion of the same park on the same day are considered to be a single visit. Such adjustments are made insofar as practicable for noncontiguous parts of the same park. However, visits are reported separately for two contiguous parks.

VISITOR DAY - Twelve visitor hours in a park.

VISITOR HOUR - The presence of one or more persons, excluding NPS personnel, in a park for continuous, intermittent, or simultaneous periods of time aggregating one hour (e.g., one person for one hour, two persons for one-half hour).

Abbreviations

BM	Battlefield Memorial
CAMPGDS	Campgrounds
Cnty	County
EHP	Ecological & Historic Preserve
HS	Historic Shrine, Historic Site
Internatl	International
LBJ	Lyndon Baines Johnson
MEM	Memorial
MISC	Miscellaneous
MTNS	Mountains
NB	National Battlefield
NBP	National Battlefield Park
NBS	National Battlefield Site
NEM	National Expansion Memorial
NHC	National Heritage Corridor
NHP	National Historical Park
NHR	National Historical Reserve
NHS	National Historic Site
NL	National Lakeshore
NM	National Monument
NMEM	National Memorial
NMP	National Military Park
NON-REC	Non-Recreation
NP	National Park
NPRES	National Preserve
NPS	National Park Service
NR	National River
NRA	National Recreation Area
NRES	National Reserve
NRR	National Recreational River
NRRA	National River & Recreation Area
NS	National Seashore
NSR	National Scenic River
NST	National Scenic Trail
NWSR	National Wild & Scenic River
ONS	Overnight Stays
PKWY	Parkway
PRES	Preserve
RA	Recreation Area
RECR	Recreation
RV's	Recreational Vehicles
SRR	Scenic & Recreational River
W&SR	Wild & Scenic Recreational River

The Department of the Interior protects and manages the nation's natural resources and cultural heritage; provides scientific and other information about those resources; and honors its special responsibilities to American Indians, Alaska Natives, and affiliated Island Communities.

NPS/NRPC/SSD/NRR-2010/039, March 2010

National Park Service
U.S. Department of the Interior



Public Use Statistics Office
Social Science Division
WASO-TNT
P.O. Box 25287
Denver, Colorado 80225-0287