

Statistical Abstract

2019

Natural Resource Data Series NPS/NRSS/EQD/NRDS—2020/1272



ON THE COVER

Lighthouse and recreation boat in harbor at Boca Chita Key, Biscayne National Park
(NPS / PAMELA ZIESLER)

Statistical Abstract

2019

Natural Resource Data Series NPS/NRSS/EQD/NRDS—2020/1272

Pamela S. Ziesler

National Park Service
NRSS / EQD / Social Science Program
1201 Oakridge Drive
Fort Collins, CO 80525

April 2020

U.S. Department of the Interior
National Park Service
Natural Resource Stewardship and Science
Fort Collins, Colorado

The National Park Service, Natural Resource Stewardship and Science office in Fort Collins, Colorado, publishes a range of reports that address natural resource topics. These reports are of interest and applicability to a broad audience in the National Park Service and others in natural resource management, including scientists, conservation and environmental constituencies, and the public.

The Natural Resource Data Series is intended for the timely release of basic data sets and data summaries. Care has been taken to assure accuracy of raw data values, but a thorough analysis and interpretation of the data has not been completed. Consequently, the initial analyses of data in this report are provisional and subject to change.

All manuscripts in the series receive the appropriate level of peer review to ensure that the information is scientifically credible, technically accurate, appropriately written for the intended audience, and designed and published in a professional manner.

This report received informal peer review by subject-matter experts who were not directly involved in the collection, analysis, or reporting of the data. Data in this report were collected and analyzed using methods based on established, peer-reviewed protocols and were analyzed and interpreted within the guidelines of the protocols.

Views, statements, findings, conclusions, recommendations, and data in this report do not necessarily reflect views and policies of the National Park Service, U.S. Department of the Interior. Mention of trade names or commercial products does not constitute endorsement or recommendation for use by the U.S. Government.

This report is available in digital format from the [NPS Visitor Use Statistics website](#) and the [Natural Resource Publications Management website](#). If you have difficulty accessing information in this publication, particularly if using assistive technology, please email irma@nps.gov.

Please cite this publication as:

Ziesler, P. S. 2020. Statistical abstract: 2019. Natural Resource Data Series NPS/NRSS/EQD/NRDS—2020/1272. National Park Service, Fort Collins, Colorado.

Contents

	Page
Figures.....	v
Tables	v
Introduction and Summary	1
2019 Visitor Use Data.....	3
Recreation Visits by Type of Unit.....	3
Recreation Visits by State	6
Recreation Visits / Visitor Days by Population Center	9
Recreation Visits / Visitor Days and Non-Recreation Visits / Visitor Days by Park.....	10
Average Recreation Visits per Day to NPS Units	26
Overnight Stays	27
Affiliated and Non-Reporting Areas	35
Affiliated Areas	35
Areas Not Reporting Visitor Use	36
Recreation Visits / Visitor Days by State and U.S. Territory	38
Endnotes.....	59
Definitions.....	67
Abbreviations	71
Appendix: Parks setting an annual recreation visit record in 2019.....	73

Figures

	Page
Figure 1. Percentage of Recreation Visits by Type of Unit, 2019	4
Figure 2. Recreation Visits by Type of Unit, 2018 and 2019 (Bar Labels indicate percent change from 2018 to 2019)	5
Figure 3. Percent Change of Recreation Visits by State or Territory, 2018 to 2019	8
Figure 4. Recreation Visits by Population Center for 2018 and 2019	9
Figure 5. Average Number of Recreation Visits per Day to NPS Units by Month, 2018 and 2019	26
Figure 6. Recreation Overnight Stays by Category and Year, 1995-2019	34
Figure A.1. Parks setting an annual recreation visit record in 2019 (See Table A.1 for Park Unit IDs)	73

Tables

	Page
Table 1. 2019 Recreation Visits by Type of Unit	3
Table 2. 2019 Recreation Visits by State and U.S. Territory Compared to 2018	6
Table 3. 2019 Recreation Visits / Visitor Days and Change from 2018 by Population Center	9
Table 4. 2019 Recreation Visits / Visitor Days and Non-Recreation Visits / Visitor Days and Percent Change from 2018 by Park	10
Table 5. 2019 Overnight Stays by Unit	27
Table 6. 2019 Recreation Visits / Visitor Days and Percent Change from 2018 by State and U.S. Territory	38
Table A.1. Parks setting an annual recreation visit record in 2019	74

Introduction and Summary

In 2019, recreation visits exceeded 300 million for the fifth year in a row. The NPS received 327,516,619 recreation visits and recorded the third highest year since record-keeping began in 1904. Recreation visits were over 9 million more than in 2018 for a 2.9% increase. It was also less than 3.5 million below the all-time high visitation set during the NPS centennial celebration year of 2016. Recreation visitor hours were up 2% from 2018 at 1.43 billion hours.

Thirty-three NPS units set a new record for recreation visits and 14 of these parks broke a record they set in 2018. While the number of reporting units over 10 million visits was the same as in 2018 (3 parks), there was one more unit over 5 million recreation visits (11 parks) and three more units (80 parks) over one million visits in 2019.

Several parks passed annual visitation milestones: Great Sand Dunes NP & PRES and Little River Canyon NPRES passed 500,000 annual visits for the first time, Ross Lake NRA and Saguaro NP passed one million annual visits for the first time, and Great Smoky Mountains NP passed 12 million annual recreation visits for the first time. Other parks passed milestones for accumulated recreation visits since record keeping began including Death Valley NP (1933-2019) and Sleeping Bear Dunes NL (1976-2019) passing 50 million total recreation visits each and Yosemite NP (1906-2019) passing 200 million total recreation visits.

While recreation visits and visitor hours were up from 2018, overnight stays were down slightly (-0.65%). All categories of overnight stays were down from 2018 except concession operated lodging (up 3.9%) and backcountry camping (up 1.4%).

Factors influencing the increase in recreation visits from 2018 are related more to events in previous years than in 2019. 2018 visitation was influenced by lingering closures from 2017 hurricanes, large wildland fires in California and a volcanic eruption in Hawai'i. Visitation at most of the parks affected by these events in 2017 and 2018 recovered during 2019. One exception is Virgin Islands NP which continues to experience reduced visitation after extreme damage to the park and nearby island communities from the 2017 hurricane season.

A new appendix is added to this abstract with a table of parks setting recreation visit records in 2019 and a graphic showing the location of these record-setting parks. Parks are identified in the graphic by their NPS unit ID; IDs are listed in the accompanying table.

In the pages that follow, a series of tables and figures display visitor use data for calendar year 2019. By documenting these visits across the National Park System, the NPS Statistical Abstract offers a historical record of visitor use in NPS units and provides NPS staff and partners with a useful tool for effective management and planning. In 2019, 385 of 419 NPS units collected visitor use data; the remainder are unable to do so for a variety of reasons, such as administration by another agency, non-federal land ownership or new parks that lack staff and facilities for management of visitor statistics.

The responsibility for compiling and summarizing visitation records lies with the Social Science Program in the Environmental Quality Division, Natural Resource Stewardship and Science

Directorate. The Program relies on the conscientious efforts of NPS field staff to count, record and report visitor use. This system of collecting and analyzing monthly visitor use data is combined with continuous review and assessment of park counting procedures to ensure consistency and accuracy of data. Detailed, unit-specific instructions for the units that collect data are available on the Visitor Use Statistics website (<https://irma.nps.gov/Stats/>).

In addition to this Abstract, the Social Science Program produces monthly visitation summaries and reports displaying trends in park visitation and changes in visitation patterns over time. These reports are available on the Visitor Use Statistics website. Additional reports prepared by the Social Science Program may be found on the NPS Social Science Program subject website (<https://www.nps.gov/subjects/socialscience/index.htm>).

For more information about visitation statistics, contact the NPS Social Science Program:

National Park Service

NRSS / EQD / Social Science Program

1201 Oakridge Drive

Fort Collins, CO 80525

2019 Visitor Use Data

The following tables and figures record visitor use data for units of the National Park System in 2019; some tables and figures compare those data to 2018. Endnotes that apply to multiple tables, definitions for terms, and abbreviations used in the tables can be found at the end of this document.

Recreation Visits by Type of Unit

Table 1 lists the number of recreation visits by type of unit in 2019. Of 419 units, 385 reported visitor use statistics (see pages 35 through 37 for a list of units that did not report visitor use). Designated national parks received the highest percentage of recreation visits (27%), followed by national recreation areas (16%) and national memorials and national historical parks (11% each). The figures that follow show percentage of recreation visits by type of unit (Figure 1) and a comparison with 2018 by type of unit (Figure 2).

Table 1. 2019 Recreation Visits by Type of Unit

Units Administered by Type	Percent of Total Visits*	2019 Recreation Visits	Percent Change from 2018**	Units Reporting Visits	Units Administered
International Historic Site	<1%	11,613	-3.2%	1	1
National Battlefield	1%	2,098,172	13.0%	10	11
National Battlefield Park	1%	3,555,073	0.7%	4	4
National Battlefield Site	0%	--	0.0%	0	1
National Historic Site	3%	8,850,017	1.0%	75	76
National Historical Park	11%	34,732,138	8.3%	51	57
National Lakeshore	1%	2,669,329	-40.3%	3	3
National Memorial	11%	37,653,264	3.6%	29	30
National Military Park	1%	4,380,576	0.8%	9	9
National Monument	7%	22,406,247	-10.2%	70	83
National Park	27%	89,815,063	6.8%	62	62
National Parkway	9%	30,186,057	1.1%	4	4
National Preserve	1%	4,014,686	17.1%	18	19
National Recreation Area	16%	52,110,142	2.1%	17	18
National Reserve	<1%	99,311	-30.2%	1	2
National River	1%	4,868,668	-0.9%	5	5
National Scenic Trail	0%	--	0.0%	0	3
National Seashore	6%	20,273,975	10.6%	10	10
National Wild & Scenic River	<1%	1,303,175	-5.9%	7	10
Park (Other)	3%	8,489,113	-2.3%	9	11
NPS Total	100%	327,516,619	2.9%	385	419

*Percents do not equal 100 due to rounding.

**Percents by park type do not add to total because each row is a separate percent change by park type.

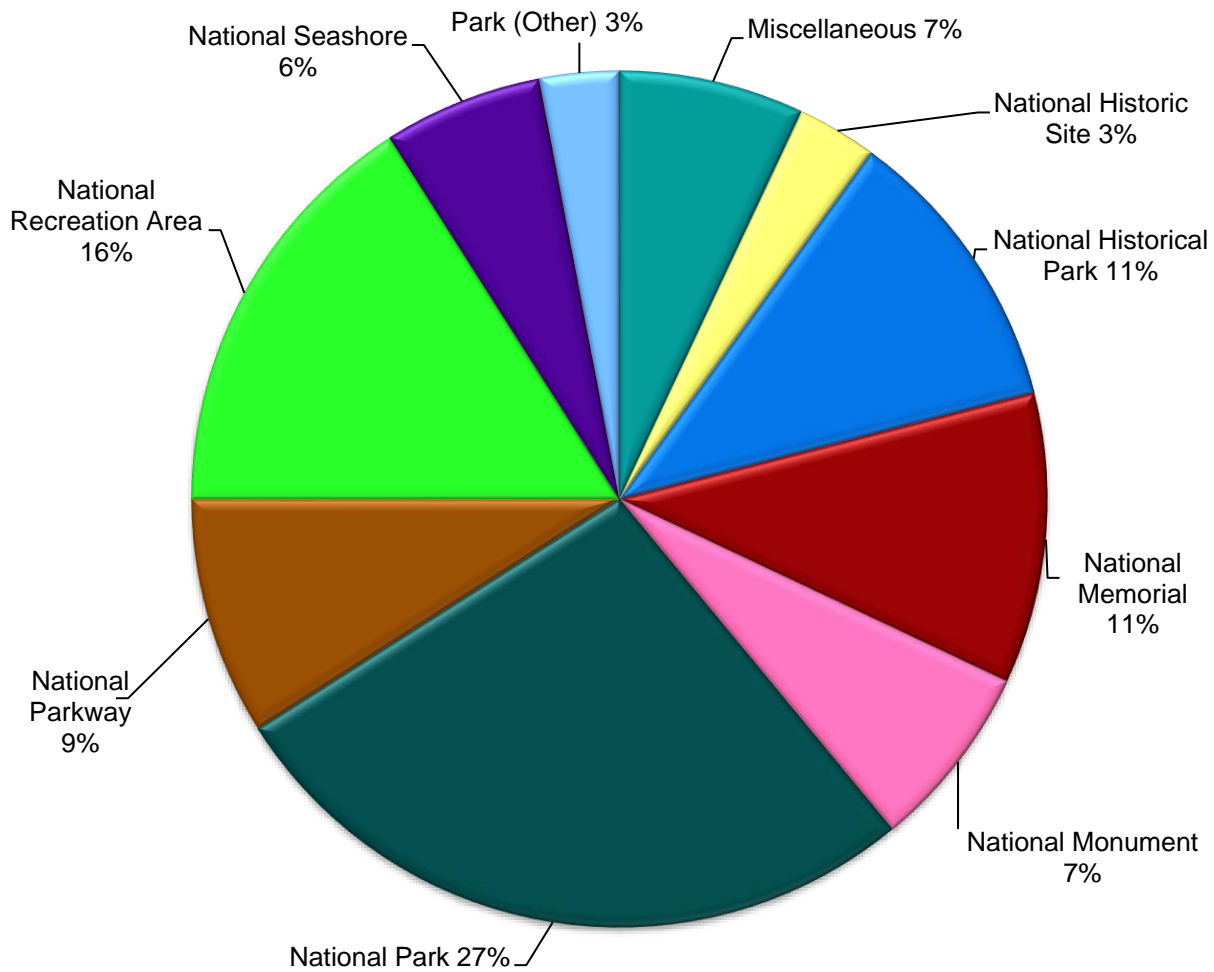


Figure 1. Percentage of Recreation Visits by Type of Unit, 2019

Note: Miscellaneous includes those categories listed in Table 1 but not broken out in this figure: international historic site, national battlefield, national battlefield park, national lakeshore, national military park, national preserve, national reserve, national river, and national wild & scenic river.

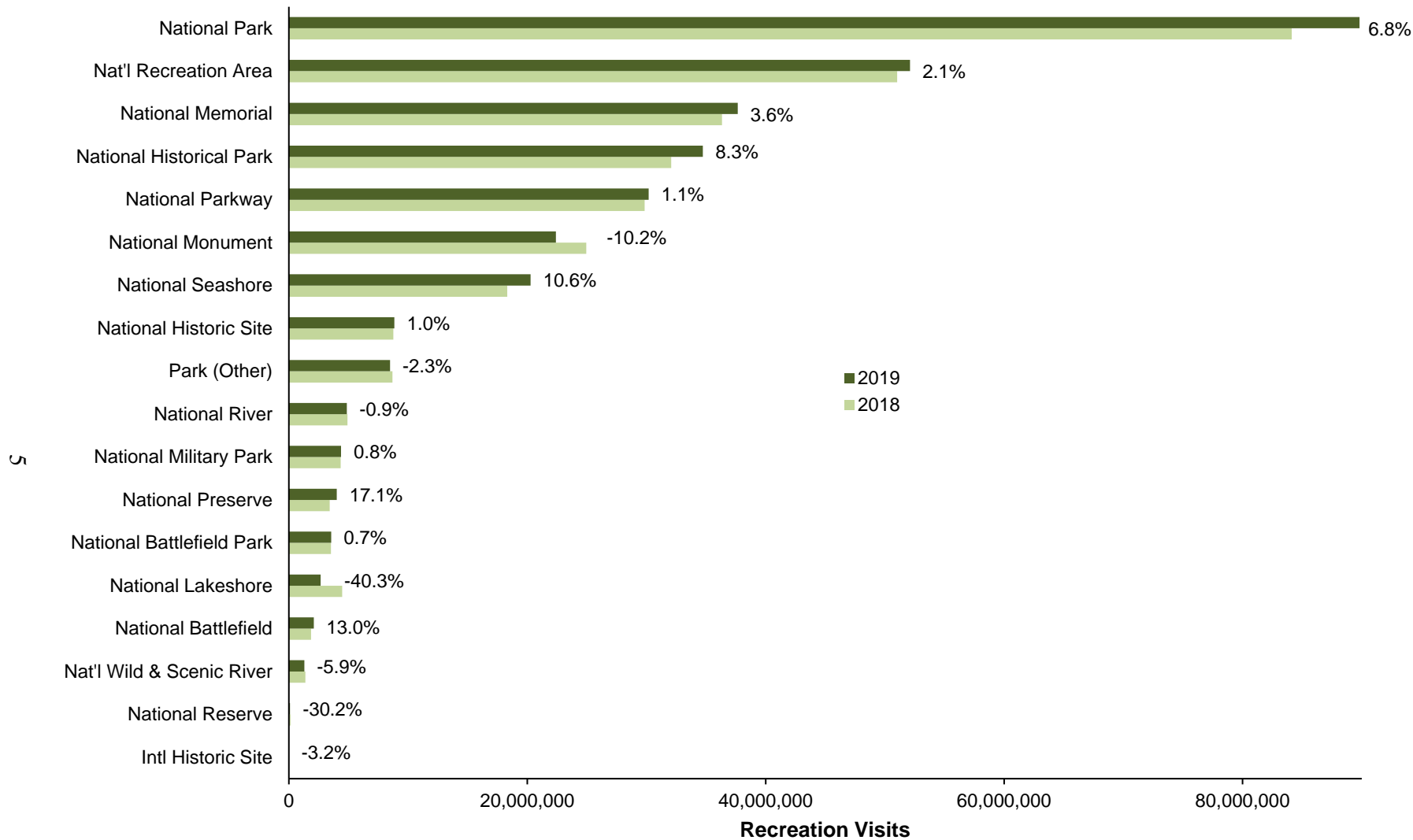


Figure 2. Recreation Visits by Type of Unit, 2018 and 2019
(Bar Labels indicate percent change from 2018 to 2019)

Recreation Visits by State

Table 2 reports 2019 NPS recreation visits in each state, the District of Columbia, and the U.S. territories of American Samoa, Guam, Puerto Rico and the U.S. Virgin Islands. The table also shows 2018 recreation visits and the percent change in recreation visits from 2018 to 2019. Figure 3 displays this change for each state and territory with the exception of Delaware, which currently does not have a reporting NPS unit. Overall, the number of recreation visits is up 2.9% from 2018 (327,516,619 in 2019 compared to 318,211,833 in 2018).

Table 2. 2019 Recreation Visits by State and U.S. Territory Compared to 2018

State	Recreation Visits 2019*	Recreation Visits 2018*	Percent Change**
Alabama	1,219,216	1,020,975	19.4%
Alaska	3,218,301	2,920,249	10.2%
American Samoa	60,006	28,626	109.6%
Arizona	12,463,772	12,850,196	-3.0%
Arkansas	3,227,883	3,175,612	1.6%
California	39,620,672	39,908,521	-0.7%
Colorado	7,761,213	7,565,055	2.6%
Connecticut	38,700	35,382	9.4%
District of Columbia	39,687,383	40,159,092	-1.2%
Florida	12,009,271	9,646,727	24.5%
Georgia	8,206,285	7,519,835	9.1%
Guam	432,213	387,856	11.4%
Hawaii	4,929,610	4,838,838	1.9%
Idaho	617,646	745,544	-17.2%
Illinois	197,816	197,717	0.1%
Indiana	2,413,129	2,011,116	20.0%
Iowa	191,269	193,663	-1.2%
Kansas	109,729	110,191	-0.4%
Kentucky	1,752,796	1,742,439	0.6%
Louisiana	661,300	611,240	8.2%
Maine	3,448,899	3,549,576	-2.8%
Maryland	6,854,872	6,006,443	14.1%
Massachusetts	10,003,220	9,646,316	3.7%
Michigan	2,702,015	2,745,670	-1.6%
Minnesota	1,099,282	1,186,406	-7.3%
Mississippi	7,031,781	6,863,047	2.5%
Missouri	3,629,384	3,622,004	0.2%

*Sum of states does not equal NPS Total due to rounding.

**Percents by state do not add to total because each row is a separate percent change by state

Table 2 (continued). 2019 Recreation Visits by State and U.S. Territory Compared to 2018

State	Recreation Visits 2019*	Recreation Visits 2018*	Percent Change**
Montana	5,547,209	5,547,379	-0.0%
Nebraska	305,112	287,996	5.9%
Nevada	5,756,090	5,837,312	-1.4%
New Hampshire	31,759	35,218	-9.8%
New Jersey	4,588,966	4,488,754	2.2%
New Mexico	2,139,674	2,113,807	1.2%
New York	21,013,245	19,291,389	8.9%
North Carolina	18,895,659	18,121,305	4.3%
North Dakota	714,979	774,622	-7.7%
Ohio	2,613,089	2,511,418	4.0%
Oklahoma	1,431,731	1,491,343	-4.0%
Oregon	1,237,602	1,279,046	-3.2%
Pennsylvania	10,153,809	9,708,439	4.6%
Puerto Rico	1,197,345	910,405	31.5%
Rhode Island	59,419	60,709	-2.1%
South Carolina	1,655,573	1,612,758	2.7%
South Dakota	3,928,433	4,386,898	-10.5%
Tennessee	9,979,139	9,256,335	7.8%
Texas	5,834,681	5,310,767	9.9%
Utah	15,285,200	15,125,729	1.1%
Vermont	45,979	63,886	-28.0%
Virgin Islands	279,292	256,076	9.1%
Virginia	22,815,596	22,171,017	2.9%
Washington	8,776,096	8,375,784	4.8%
West Virginia	1,652,243	1,627,458	1.5%
Wisconsin	559,746	615,244	-9.0%
Wyoming	7,431,294	7,662,402	-3.0%
NPS Total	327,516,619	318,211,833	2.9%

*Sum of states does not equal NPS Total due to rounding.

**Percents by state do not add to total because each row is a separate percent change by state

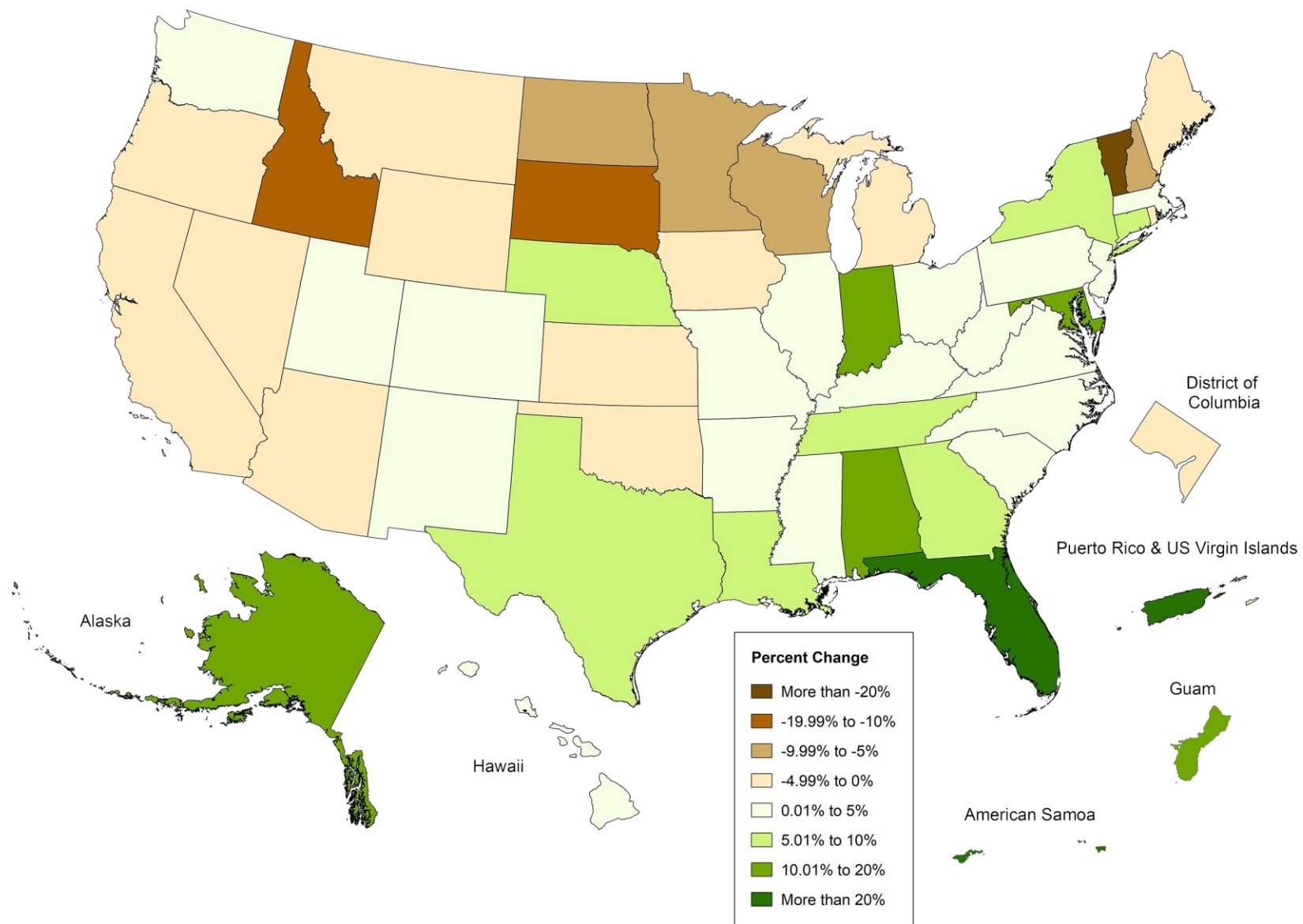


Figure 3. Percent Change of Recreation Visits by State or Territory, 2018 to 2019

Recreation Visits / Visitor Days by Population Center

Table 3 shows the number of recreation visits, visitor days and change from the previous year for NPS units by population centers. Population centers are defined in the Definitions section at the end of the abstract. Figure 4 compares 2018 and 2019 recreation visits by population center. Recreation visits increased in all six population center types.

Table 3. 2019 Recreation Visits / Visitor Days and Change from 2018 by Population Center

Population Center	Recreation Visits	Percent Change*	Recreation Visitor Days	Percent Change*
Remote Area	2,546,857	11.8%	1,260,781	5.2%
Outlying Area	39,488,816	5.0%	21,202,699	0.1%
Suburban Area	46,636,745	0.6%	11,999,610	0.3%
Mixed Area	73,024,765	4.7%	32,562,920	4.8%
Rural Area	77,289,156	1.4%	42,531,008	1.0%
Urban Area	88,530,280	2.9%	9,607,139	3.9%
NPS Total	327,516,619	2.9%	119,164,157	2.0%

*Percents by center do not add to total because each row is a separate percent change by center

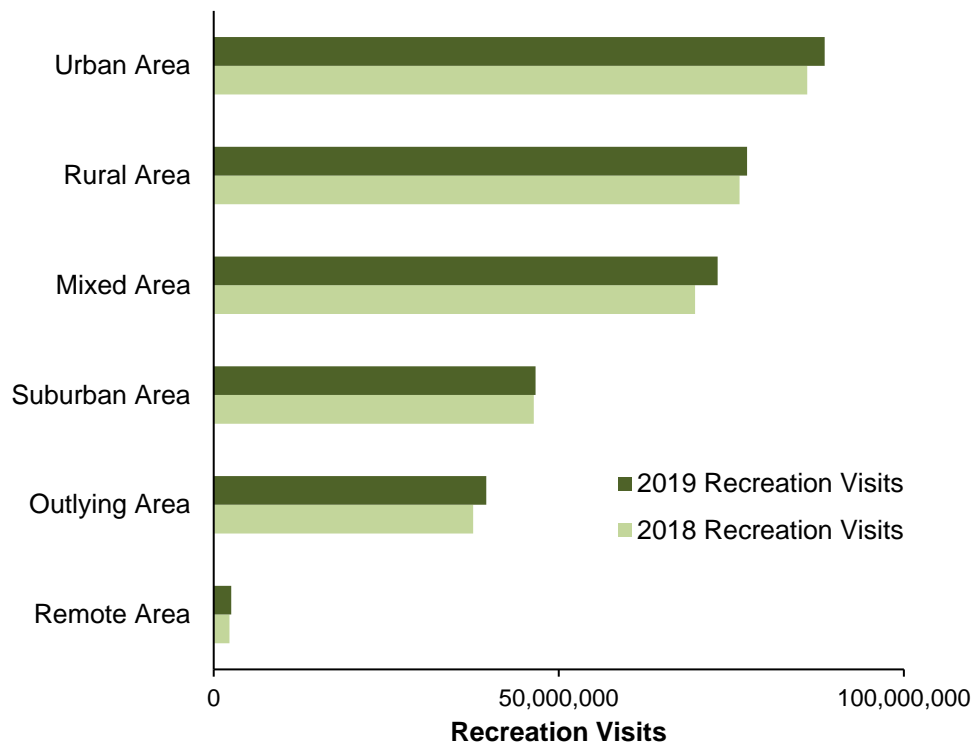


Figure 4. Recreation Visits by Population Center for 2018 and 2019

Recreation Visits / Visitor Days and Non-Recreation Visits / Visitor Days by Park

Table 4 is a complete record of recreation visits and visitor days for all NPS units reporting visitor use data. The table also shows non-recreation visits and visitor days which include through traffic (commuters), persons going to and from inholdings, tradespeople with business in the park, and government personnel (other than NPS employees) with business in the park. Both recreation visits and recreation visitor hours were up from 2018 (2.9% and 2%, respectively). Non-recreation visits were down very slightly (-0.5%) and non-recreation visitor hours were up very slightly (0.5%) from 2018. Superscript references can be found in the Endnotes.

Table 4. 2019 Recreation Visits / Visitor Days and Non-Recreation Visits / Visitor Days and Percent Change from 2018 by Park

Park Name	Recreation Visits	Percent Change	Non-Rec Visits	Percent Change	Recreation Visitor Days	Percent Change	Non-Rec Visitor Days	Percent Change
Abraham Lincoln Birthplace NHP	238,226	-8.7%	0	0.0%	19,852	-8.7%	0	0.0%
Acadia NP	3,437,286	-2.8%	47,100	0.0%	1,932,972	-1.8%	3,925	0.0%
Adams NHP	187,400	54.9%	0	-100.0%	15,587	55.2%	0	-100.0%
African Burial Ground NM	47,427	5.3%	0	0.0%	2,814	3.8%	0	0.0%
Agate Fossil Beds NM	16,657	2.6%	0	0.0%	3,142	-3.0%	0	0.0%
Alibates Flint Quarries NM	8,847	19.3%	0	0.0%	1,843	19.3%	0	0.0%
Allegheny Portage Railroad NHS	189,189	0.1%	180	0.0%	24,282	0.6%	4	0.0%
Amistad NRA ⁴	1,267,900	14.0%	1,128	0.0%	773,710	14.2%	94	0.0%
Andersonville NHS	103,635	-25.0%	0	0.0%	17,273	-25.0%	0	0.0%
Andrew Johnson NHS ³	51,189	1.0%	0	0.0%	2,350	4.5%	0	0.0%
Aniakchak NM & PRES	100	0.0%	0	0.0%	460	-2.1%	0	0.0%
Antietam NB	287,343	-11.9%	0	0.0%	50,714	-17.8%	0	0.0%
Apostle Islands NL	240,613	-4.9%	2,016	158.5%	66,010	-4.2%	42	158.5%
Appomattox Court House NHP	102,397	-0.6%	0	0.0%	12,394	-0.6%	0	0.0%
Arches NP ⁴	1,659,702	-0.2%	0	0.0%	492,735	0.1%	0	0.0%
Arkansas Post NMEM	28,519	-5.3%	0	0.0%	3,565	-5.3%	0	0.0%
Arlington House The R.E. Lee MEM ⁴	0	-100.0%	0	0.0%	0	-100.0%	0	0.0%

Table 4 (continued). 2019 Recreation Visits / Visitor Days and Non-Recreation Visits / Visitor Days and Percent Change from 2018 by Park

Park Name	Recreation Visits	Percent Change	Non-Rec Visits	Percent Change	Recreation Visitor Days	Percent Change	Non-Rec Visitor Days	Percent Change
Assateague Island NS	2,344,536	9.7%	3,600	0.0%	1,664,643	10.2%	300	0.0%
Aztec Ruins NM	63,777	16.1%	2,663	40.7%	7,972	16.1%	222	40.7%
Badlands NP ³	970,998	-3.8%	55,984	-46.7%	349,399	-2.3%	2,333	-46.7%
Bandelier NM	200,741	1.2%	840	0.0%	77,363	-3.7%	18	0.0%
Belmont-Paul Women's Equality NM	9,913	9.2%	0	0.0%	745	-1.1%	0	0.0%
Bent's Old Fort NHS	21,674	-8.0%	0	0.0%	3,161	-8.0%	0	0.0%
Bering Land Bridge NPRES	2,642	0.0%	1,128	0.0%	661	0.0%	752	0.0%
Big Bend NP	463,832	5.4%	2,364	0.0%	874,696	1.4%	591	0.0%
Big Cypress NPRES ³	1,007,471	26.8%	0	0.0%	282,807	38.8%	0	0.0%
Big Hole NB ^{3,5}	45,861	-19.5%	0	0.0%	5,494	-22.7%	0	0.0%
Big South Fork NRRRA	750,494	-1.4%	0	0.0%	439,429	-2.7%	0	0.0%
Big Thicket NPRES ³	255,926	15.5%	0	0.0%	68,880	3.1%	0	0.0%
Bighorn Canyon NRA ^{3,5}	249,659	6.0%	6,900	0.0%	85,521	13.6%	287	0.0%
Biscayne NP ³	708,522	51.0%	0	0.0%	183,765	40.1%	0	0.0%
Black Canyon of the Gunnison NP	432,818	40.1%	0	0.0%	182,875	18.8%	0	0.0%
Blue Ridge PKWY	14,976,085	1.9%	1,942,260	0.0%	7,811,797	2.5%	80,928	0.0%
Bluestone NSR	37,663	20.3%	0	0.0%	7,847	20.3%	0	0.0%
Booker T. Washington NM	24,640	8.4%	84	0.0%	4,024	-1.7%	1	0.0%
Boston African American NHS	419,585	2.1%	0	0.0%	69,931	2.1%	0	0.0%
Boston NHP	3,201,834	4.9%	60,480	-2.9%	218,518	-2.7%	857	-2.9%
Brown v. Board of Education NHS	21,413	-11.1%	0	0.0%	3,569	-11.1%	0	0.0%
Bryce Canyon NP ⁴	2,594,904	-3.2%	416,166	-0.9%	1,058,807	-8.4%	10,404	-0.9%
Buck Island Reef NM ⁴	37,085	18.1%	0	0.0%	18,339	13.6%	0	0.0%
Buffalo NR	1,326,282	6.9%	0	0.0%	545,634	2.9%	0	0.0%

Table 4 (continued). 2019 Recreation Visits / Visitor Days and Non-Recreation Visits / Visitor Days and Percent Change from 2018 by Park

Park Name	Recreation Visits	Percent Change	Non-Rec Visits	Percent Change	Recreation Visitor Days	Percent Change	Non-Rec Visitor Days	Percent Change
Cabrillo NM	761,485	-9.6%	81,792	0.0%	94,917	-9.5%	1,704	0.0%
Canaveral NS	1,884,122	13.6%	0	0.0%	395,875	12.9%	0	0.0%
Cane River Creole NHP	29,922	11.3%	0	0.0%	4,987	11.3%	0	0.0%
Canyon de Chelly NM	460,757	4.9%	702,768	10.7%	261,512	5.6%	117,128	10.7%
Canyonlands NP ^{3,5}	733,996	-0.7%	0	0.0%	429,396	-2.8%	0	0.0%
Cape Cod NS	4,096,104	4.3%	29,548	0.0%	669,598	4.8%	14,774	0.0%
Cape Hatteras NS ⁴	2,606,632	0.6%	139,472	3.0%	972,053	2.8%	35,273	2.5%
Cape Krusenstern NM	16,226	7.5%	7,800	1.3%	3,819	10.5%	5,200	1.3%
Cape Lookout NS ^{3,4}	455,526	11.5%	2,160	-55.0%	150,107	1.3%	540	-55.0%
Capitol Reef NP	1,226,519	-0.1%	56,871	2.6%	159,131	-0.5%	4,739	2.6%
Capulin Volcano NM	81,617	21.1%	380	-9.5%	9,468	22.5%	32	-9.5%
Carl Sandburg Home NHS	78,144	8.5%	0	0.0%	9,996	7.9%	0	0.0%
Carlsbad Caverns NP	440,691	-5.4%	0	0.0%	140,659	-6.0%	0	0.0%
Carter G. Woodson Home NHS	2,381	21.9%	0	0.0%	101	20.0%	0	0.0%
Casa Grande Ruins NM	68,379	8.5%	2,160	0.0%	7,762	8.5%	18	0.0%
Castillo de San Marcos NM	673,395	-10.0%	0	0.0%	42,087	-10.0%	0	0.0%
Castle Clinton NM	4,361,034	-3.8%	594	-4.3%	182,558	-3.9%	10	-4.1%
Catoctin Mountain Park	296,846	-1.0%	192,220	-0.1%	105,943	-0.7%	1,890	0.0%
Cedar Breaks NM	579,861	-10.0%	54,768	-1.8%	102,691	-9.5%	9,128	-1.8%
Cesar E. Chavez NM	16,490	29.1%	0	0.0%	687	29.1%	0	0.0%
Chaco Culture NHP	47,342	-18.1%	10,560	0.0%	50,079	-11.8%	880	0.0%
Chamizal NM	38,228	-42.5%	47,298	-3.5%	4,157	-43.2%	13,795	-3.5%
Channel Islands NP ³	409,630	11.8%	4,445	-24.2%	450,954	45.3%	8,892	-24.2%
Charles Pinckney NHS	35,495	3.3%	0	0.0%	5,916	3.3%	0	0.0%
Charles Young Buffalo Soldiers NM	14,106	-55.1%	0	0.0%	2,322	-39.4%	0	0.0%

Table 4 (continued). 2019 Recreation Visits / Visitor Days and Non-Recreation Visits / Visitor Days and Percent Change from 2018 by Park

Park Name	Recreation Visits	Percent Change	Non-Rec Visits	Percent Change	Recreation Visitor Days	Percent Change	Non-Rec Visitor Days	Percent Change
Chattahoochee River NRA	3,393,133	18.1%	0	0.0%	1,131,044	18.1%	0	0.0%
Chesapeake & Ohio Canal NHP	5,116,787	15.3%	11,880	0.0%	867,977	11.2%	990	0.0%
Chickamauga & Chattanooga NMP	977,158	3.3%	2,182,308	3.8%	156,357	1.4%	27,279	3.8%
Chickasaw NRA	1,422,612	-3.7%	1,640,957	0.0%	513,792	-9.5%	10,940	0.0%
Chiricahua NM ⁴	60,655	0.1%	3,600	0.0%	27,926	2.3%	100	0.0%
Christiansted NHS	103,594	-3.6%	0	0.0%	5,006	-4.5%	0	0.0%
City of Rocks NRES	99,311	-30.2%	0	0.0%	28,965	-30.2%	0	0.0%
Clara Barton NHS	4,100	864.7%	0	0.0%	342	864.7%	0	0.0%
Colonial NHP	3,327,268	1.0%	2,107,143	-0.1%	293,602	2.4%	87,798	-0.1%
Colorado NM	397,032	5.7%	368,232	6.0%	114,770	10.0%	15,343	6.0%
Congaree NP	159,445	9.3%	0	0.0%	55,913	7.8%	0	0.0%
Coronado NMEM	130,328	26.3%	2,508	0.0%	12,949	32.2%	104	0.0%
Cowpens NB	223,413	18.0%	0	0.0%	15,946	2.7%	0	0.0%
Crater Lake NP	704,512	-2.2%	49,600	0.0%	284,315	-16.9%	2,067	0.0%
Craters of the Moon NM & PRES	272,224	3.3%	0	0.0%	64,552	-1.0%	0	0.0%
Cumberland Gap NHP ⁵	704,598	3.0%	7,806,085	-4.6%	123,402	12.2%	462,732	-4.6%
Cumberland Island NS	53,904	-3.1%	0	0.0%	76,765	-3.2%	0	0.0%
Curecanti NRA	836,034	-10.2%	0	0.0%	326,779	-9.5%	0	0.0%
Cuyahoga Valley NP	2,237,997	6.8%	0	0.0%	546,270	4.6%	0	0.0%
Dayton Aviation Heritage NHP	94,709	1.2%	0	0.0%	10,852	-1.5%	0	0.0%
De Soto NMEM	187,880	-11.0%	0	0.0%	25,834	-11.0%	0	0.0%
Death Valley NP ⁴	1,740,945	3.7%	68,981	4.2%	1,002,110	2.3%	8,623	4.2%
Delaware Water Gap NRA	3,374,865	3.5%	54,000	0.0%	1,196,232	2.6%	2,250	0.0%
Denali NP & PRES ⁵	601,152	1.1%	787,826	0.5%	552,892	1.3%	16,413	0.5%
Devils Postpile NM	147,864	5.8%	0	0.0%	43,127	5.8%	0	0.0%

Table 4 (continued). 2019 Recreation Visits / Visitor Days and Non-Recreation Visits / Visitor Days and Percent Change from 2018 by Park

Park Name	Recreation Visits	Percent Change	Non-Rec Visits	Percent Change	Recreation Visitor Days	Percent Change	Non-Rec Visitor Days	Percent Change
Devils Tower NM ³	450,785	-3.7%	2,978	-5.1%	107,416	-8.0%	124	-5.3%
Dinosaur NM	298,965	-1.8%	732	0.0%	152,944	5.1%	61	0.0%
Dry Tortugas NP ³	79,200	39.4%	2,586	-42.0%	51,100	-14.3%	2,586	-42.0%
Edgar Allan Poe NHS	15,527	-4.8%	0	0.0%	1,294	-4.8%	0	0.0%
Effigy Mounds NM	65,581	18.0%	1,200	0.0%	13,663	18.0%	17	0.0%
Eisenhower NHS	47,277	12.5%	0	0.0%	6,304	12.5%	0	0.0%
El Malpais NM	158,924	3.0%	720	0.0%	52,975	3.0%	15	0.0%
El Morro NM	68,867	5.2%	14,283	4.9%	18,247	2.8%	393	4.8%
Eleanor Roosevelt NHS	47,630	-12.8%	0	0.0%	5,954	-12.8%	0	0.0%
Eugene O'Neill NHS	2,944	-14.2%	74	-46.0%	528	0.1%	12	-46.0%
Everglades NP ^{3,5}	1,118,300	87.3%	6,000	0.0%	413,616	94.3%	2,250	0.0%
Federal Hall NMEM	264,849	14.8%	1,751	6.8%	15,998	9.7%	147	-31.5%
Fire Island NS	391,311	28.0%	184,626	-16.2%	127,359	43.7%	46,157	-16.2%
First Ladies NHS	10,913	-4.7%	0	0.0%	1,819	-4.7%	0	0.0%
Flight 93 NMEM ³	411,226	7.8%	0	0.0%	59,970	7.8%	0	0.0%
Florissant Fossil Beds NM ^{3,5}	77,340	-2.8%	0	0.0%	7,889	-2.8%	0	0.0%
Ford's Theatre NHS	572,373	7.3%	3,260	-5.7%	67,015	18.3%	815	-5.7%
Fort Bowie NHS	7,577	-9.8%	0	0.0%	1,263	-9.8%	0	0.0%
Fort Caroline NMEM ⁵	187,658	-7.7%	0	0.0%	15,638	-7.7%	0	0.0%
Fort Davis NHS ⁴	51,995	5.0%	255	-10.5%	8,666	0.2%	116	177.4%
Fort Donelson NB	254,431	50.6%	540,993	8.8%	14,127	50.4%	1,488	8.8%
Fort Frederica NM	212,330	15.7%	1,800	0.0%	17,858	15.7%	37	0.0%
Fort Laramie NHS	42,892	-18.2%	365	0.0%	5,361	-18.2%	45	0.0%
Fort Larned NHS	26,958	-7.6%	0	0.0%	4,493	-7.6%	0	0.0%
Fort Matanzas NM ⁴	593,788	-2.4%	0	0.0%	50,116	-2.8%	0	0.0%

Table 4 (continued). 2019 Recreation Visits / Visitor Days and Non-Recreation Visits / Visitor Days and Percent Change from 2018 by Park

Park Name	Recreation Visits	Percent Change	Non-Rec Visits	Percent Change	Recreation Visitor Days	Percent Change	Non-Rec Visitor Days	Percent Change
Fort McHenry NM & HS	419,545	-13.7%	720	0.0%	52,443	-13.7%	30	0.0%
Fort Necessity NB	312,104	11.1%	120	0.0%	37,015	10.8%	4	0.0%
Fort Point NHS	1,421,349	1.5%	0	0.0%	65,119	-2.7%	0	0.0%
Fort Pulaski NM	374,290	-10.9%	19,476	0.0%	77,977	-10.9%	406	0.0%
Fort Raleigh NHS	248,139	-5.0%	1,344	0.0%	30,097	-4.4%	112	0.0%
Fort Scott NHS	24,068	-9.1%	420	90.0%	3,009	-9.1%	12	89.0%
Fort Smith NHS	125,500	-8.1%	0	0.0%	7,180	-10.2%	0	0.0%
Fort Stanwix NM	97,412	7.6%	0	0.0%	12,177	7.6%	0	0.0%
Fort Sumter and Fort Moultrie NHP ⁶	877,894	2.1%	0	0.0%	177,030	2.5%	0	0.0%
Fort Union NM	11,063	1.9%	220	-8.3%	1,088	1.9%	2	-8.3%
Fort Union Trading Post NHS	12,967	-4.3%	515	-15.3%	1,304	-6.8%	11	-16.4%
Fort Vancouver NHS ^{3,5}	1,018,214	-7.3%	96,000	100.0%	91,481	-1.7%	64,000	100.0%
Fort Washington Park	423,868	34.1%	0	0.0%	139,596	36.5%	0	0.0%
Fossil Butte NM	20,554	-3.7%	294	-20.8%	2,351	-2.4%	17	-11.2%
Franklin Delano Roosevelt MEM	3,303,573	0.5%	0	0.0%	137,649	0.5%	0	0.0%
Frederick Douglass NHS	61,063	-13.8%	0	0.0%	5,089	-13.8%	0	0.0%
Frederick Law Olmsted NHS	7,791	-20.9%	613	14.4%	1,299	-20.9%	98	-44.8%
Fredericksburg & Spotsylvania NMP	906,800	-2.1%	1,396,899	-1.6%	35,540	2.0%	13,823	-6.1%
Friendship Hill NHS	34,159	-18.0%	0	0.0%	6,722	-15.7%	0	0.0%
Gates of the Arctic NP & PRES	10,518	9.7%	0	0.0%	8,531	-44.9%	0	0.0%
Gateway Arch NP	2,055,309	1.9%	0	0.0%	685,103	1.9%	0	0.0%
Gateway NRA	9,405,622	1.8%	1,132,623	-8.8%	2,141,806	0.4%	188,771	-8.8%
Gauley River NRA	119,282	22.0%	0	0.0%	31,654	8.7%	0	0.0%
General Grant NM	113,852	55.2%	137	-67.9%	5,015	31.6%	6	-81.1%

Table 4 (continued). 2019 Recreation Visits / Visitor Days and Non-Recreation Visits / Visitor Days and Percent Change from 2018 by Park

Park Name	Recreation Visits	Percent Change	Non-Rec Visits	Percent Change	Recreation Visitor Days	Percent Change	Non-Rec Visitor Days	Percent Change
George Rogers Clark NHP	140,130	15.6%	0	0.0%	15,648	15.6%	0	0.0%
George Washington Birthplace NM	139,666	25.8%	7,200	0.0%	36,032	25.8%	600	0.0%
George Washington Carver NM	49,553	11.6%	0	0.0%	5,368	11.6%	0	0.0%
George Washington MEM PKWY	7,487,265	2.7%	36,298,118	0.7%	677,688	3.6%	1,512,422	0.7%
Gettysburg NMP	925,117	-2.6%	74,400	0.0%	343,226	-1.3%	1,029	0.0%
Gila Cliff Dwellings NM	66,614	-15.8%	0	0.0%	8,327	-15.8%	0	0.0%
Glacier Bay NP & PRES	672,087	12.4%	489	-24.1%	713,718	11.2%	5,892	-25.6%
Glacier NP	3,049,839	2.9%	13,103	-3.2%	2,831,657	5.5%	9,469	-4.0%
Glen Canyon NRA	4,330,563	2.6%	37,176	14.6%	3,675,485	-2.1%	37,176	14.6%
Golden Gate NRA	15,002,227	-1.5%	0	0.0%	3,263,815	-2.5%	0	0.0%
Golden Spike NHP ^{3,6}	108,154	79.9%	31,000	0.0%	21,859	80.1%	1,292	0.0%
Governors Island NM	590,993	0.2%	0	0.0%	98,499	0.2%	0	0.0%
Grand Canyon NP	5,974,411	-6.4%	21,249	-10.5%	7,832,928	-6.5%	1,771	-10.5%
Grand Portage NM	94,985	0.9%	0	0.0%	17,337	1.9%	0	0.0%
Grand Teton NP	3,405,614	-2.5%	1,610,087	-0.5%	1,766,900	10.6%	134,174	-0.5%
Grant-Kohrs Ranch NHS	25,043	-6.1%	0	0.0%	2,567	-6.1%	0	0.0%
Great Basin NP	131,802	-13.9%	896	9.8%	106,896	-21.6%	37	10.3%
Great Sand Dunes NP & PRES	527,546	19.1%	470	0.0%	226,334	9.2%	39	0.0%
Great Smoky Mountains NP	12,547,743	9.9%	10,544,367	0.0%	7,600,299	9.0%	439,349	0.0%
Greenbelt Park ^{3,4}	128,702	51.0%	0	0.0%	43,287	-26.5%	0	0.0%
Guadalupe Mountains NP ^{3,5}	188,833	9.6%	1,440	100.0%	36,766	-13.0%	120	100.0%
Guilford Courthouse NMP	223,900	-5.1%	4,027,847	-6.1%	12,148	-1.3%	2,786	-6.1%
Gulf Islands NS ³	5,600,240	32.4%	115,381	7.8%	1,491,749	37.1%	1,888	9.9%
Hagerman Fossil Beds NM	23,768	-10.2%	0	0.0%	2,971	-10.2%	0	0.0%
Haleakala NP ⁵	994,394	-4.8%	20,160	-30.7%	190,756	-9.7%	1,680	0.0%

Table 4 (continued). 2019 Recreation Visits / Visitor Days and Non-Recreation Visits / Visitor Days and Percent Change from 2018 by Park

Park Name	Recreation Visits	Percent Change	Non-Rec Visits	Percent Change	Recreation Visitor Days	Percent Change	Non-Rec Visitor Days	Percent Change
Hamilton Grange NMEM	71,247	7.6%	126	-2.3%	4,609	12.8%	1	60.0%
Hampton NHS	28,234	-4.7%	600	0.0%	3,529	-4.7%	50	0.0%
Harpers Ferry NHP	299,577	12.7%	0	0.0%	99,859	12.7%	0	0.0%
Harry S Truman NHS	30,746	-6.5%	0	0.0%	1,942	-5.2%	0	0.0%
Hawaii Volcanoes NP	1,368,376	22.5%	1,849,253	0.1%	707,659	27.7%	50,854	0.1%
Herbert Hoover NHS	125,688	-9.0%	18,000	0.0%	10,474	-9.0%	100	0.0%
Home of Franklin D. Roosevelt NHS	147,109	-4.5%	0	0.0%	19,621	-6.1%	0	0.0%
Homestead NM of America	61,636	-9.5%	320,156	-11.6%	8,683	-8.6%	4,269	-11.6%
Hopewell Culture NHP	60,338	5.2%	0	0.0%	10,056	5.2%	0	0.0%
Hopewell Furnace NHS	49,861	7.4%	600	0.0%	4,986	7.4%	25	0.0%
Horseshoe Bend NMP ^{3,5}	45,372	-6.4%	0	-100.0%	11,749	24.7%	0	-100.0%
Hot Springs NP	1,467,153	-2.6%	2,231,219	-3.2%	112,748	0.9%	37,187	-3.2%
Hovenweep NM	35,399	-12.8%	300	0.0%	10,296	-10.9%	5	0.0%
Hubbell Trading Post NHS	50,285	27.8%	4,584	0.0%	2,165	27.8%	88	0.0%
Independence NHP	4,532,459	-1.0%	0	0.0%	571,109	-0.7%	0	0.0%
Indiana Dunes NP ⁶	2,134,285	21.5%	4,054	-28.9%	476,773	21.7%	169	-29.0%
Isle Royale NP	26,410	2.4%	291	84.2%	111,304	6.4%	2,106	-11.3%
James A. Garfield NHS	41,305	1.2%	0	0.0%	6,884	1.2%	0	0.0%
Jean Lafitte NHP & PRES	590,329	11.4%	192,000	0.0%	104,174	5.2%	7,610	0.0%
Jewel Cave NM ⁴	123,489	-13.3%	105	-52.9%	26,241	-19.2%	9	-52.9%
Jimmy Carter NHS	50,789	-1.7%	0	0.0%	4,909	-6.1%	0	0.0%
John D. Rockefeller, Jr. MEM PKWY	1,426,666	-5.2%	10,800	0.0%	141,663	-9.4%	225	0.0%
John Day Fossil Beds NM	197,091	-3.7%	840	0.0%	19,052	-3.7%	7	0.0%

Table 4 (continued). 2019 Recreation Visits / Visitor Days and Non-Recreation Visits / Visitor Days and Percent Change from 2018 by Park

Park Name	Recreation Visits	Percent Change	Non-Rec Visits	Percent Change	Recreation Visitor Days	Percent Change	Non-Rec Visitor Days	Percent Change
John F. Kennedy NHS	24,838	3.2%	0	0.0%	1,035	3.2%	0	0.0%
John Muir NHS	40,725	-13.3%	61	-84.9%	5,091	-13.3%	1	-85.1%
Johnstown Flood NM	183,143	25.2%	161,991	3.3%	16,135	28.1%	405	3.3%
Joshua Tree NP ³	2,988,547	1.6%	10,442	-0.7%	1,457,488	-0.9%	870	-0.7%
Kalaupapa NHP ⁴	69,401	-3.8%	0	0.0%	13,867	-11.7%	0	0.0%
Kaloko Honokohau NHP	232,921	6.8%	0	0.0%	43,883	8.3%	0	0.0%
Katmai NP & PRES	84,167	122.6%	0	0.0%	21,395	10.1%	0	0.0%
Kenai Fjords NP	356,601	10.9%	0	0.0%	97,998	6.5%	0	0.0%
Kennesaw Mountain NBP	2,621,050	2.8%	25,343,800	0.2%	349,800	7.2%	337,917	0.2%
Keweenaw NHP	20,535	0.6%	916	-14.1%	3,094	-4.5%	76	-14.1%
Kings Canyon NP	632,110	-9.6%	29,261	1.2%	1,752,208	-8.1%	9,754	1.2%
Kings Mountain NMP	262,031	-8.9%	253,144	-8.8%	18,836	-13.9%	3,515	-8.8%
Klondike Gold Rush NHP Alaska ²	1,116,161	9.7%	0	0.0%	383,146	10.0%	0	0.0%
Klondike Gold Rush NHP Seattle ²	109,799	32.9%	0	0.0%	16,012	32.9%	0	0.0%
Knife River Indian Villages NHS	10,354	-11.4%	552	6.4%	1,246	-8.8%	23	7.3%
Kobuk Valley NP	15,766	5.5%	7,750	0.0%	4,899	8.7%	5,167	0.0%
Korean War Veterans Memorial	3,841,633	-6.5%	0	0.0%	160,068	-6.5%	0	0.0%
Lake Chelan NRA	38,785	-0.1%	0	0.0%	43,969	8.3%	0	0.0%
Lake Clark NP & PRES	17,157	18.5%	0	0.0%	4,117	-73.6%	0	0.0%
Lake Mead NRA	7,499,049	-1.1%	271,986	-1.1%	5,039,924	4.7%	135,993	-1.1%
Lake Meredith NRA	1,328,340	20.1%	0	0.0%	330,637	23.1%	0	0.0%
Lake Roosevelt NRA	1,358,818	6.4%	1,200	0.0%	324,803	-1.7%	50	0.0%
Lassen Volcanic NP ^{3,5}	517,039	3.5%	0	0.0%	457,551	1.9%	0	0.0%
Lava Beds NM	109,630	-14.2%	771	0.0%	34,104	-11.0%	32	0.0%

Table 4 (continued). 2019 Recreation Visits / Visitor Days and Non-Recreation Visits / Visitor Days and Percent Change from 2018 by Park

Park Name	Recreation Visits	Percent Change	Non-Rec Visits	Percent Change	Recreation Visitor Days	Percent Change	Non-Rec Visitor Days	Percent Change
LBJ Memorial Grove on the Potomac	244,246	-6.5%	0	0.0%	10,177	-6.5%	0	0.0%
Lewis & Clark NHP	270,993	-5.4%	145	9.0%	33,432	-6.6%	3	8.8%
Lincoln Boyhood NMEM	138,714	3.6%	16,200	0.0%	13,004	3.6%	225	0.0%
Lincoln Home NHS	197,816	0.1%	797	-83.4%	14,640	0.3%	194	-94.7%
Lincoln Memorial	7,808,182	0.0%	0	0.0%	325,341	0.0%	0	0.0%
Little Bighorn Battlefield NM	241,304	-11.5%	2,126	-10.1%	20,109	-11.5%	89	-10.2%
Little River Canyon NPRES ³	649,986	47.3%	0	0.0%	132,310	25.3%	0	0.0%
Little Rock Central High School NHS	168,918	13.3%	0	0.0%	14,077	13.3%	0	0.0%
Longfellow House Washington's HQ NHS	55,012	-9.1%	0	0.0%	6,876	-9.1%	0	0.0%
Lowell NHP	481,536	-5.1%	967	-56.7%	61,613	-3.7%	121	-56.8%
Lyndon B. Johnson NHP	111,972	-7.8%	0	0.0%	15,813	-5.8%	0	0.0%
Maggie L. Walker NHS	9,602	-12.4%	0	0.0%	1,200	-12.4%	0	0.0%
Mammoth Cave NP ^{3,4}	551,590	3.4%	109,392	-23.5%	365,088	6.7%	4,558	-23.5%
Manassas NBP	510,427	-5.8%	480	0.0%	31,902	-5.8%	7	0.0%
Manhattan Project NHP	79,870	14.8%	0	0.0%	9,509	16.8%	0	0.0%
Manzanar NHS	97,380	-6.4%	0	0.0%	12,172	-6.4%	0	0.0%
Marsh-Billings-Rockefeller NHP	45,979	-28.0%	0	0.0%	7,663	-28.0%	0	0.0%
Martin Luther King, Jr. Memorial	3,667,562	2.8%	0	0.0%	152,815	2.8%	0	0.0%
Martin Luther King, Jr. NHP	761,650	18.7%	0	0.0%	96,381	17.8%	0	0.0%
Martin Van Buren NHS	20,623	10.6%	720	0.0%	1,739	10.8%	15	0.0%
Mary McLeod Bethune Council House NHS	3,788	3375.2%	0	0.0%	631	3375.2%	0	0.0%
Mesa Verde NP ⁴	556,203	-1.3%	10,081	-1.4%	330,791	-0.1%	840	-1.4%

Table 4 (continued). 2019 Recreation Visits / Visitor Days and Non-Recreation Visits / Visitor Days and Percent Change from 2018 by Park

Park Name	Recreation Visits	Percent Change	Non-Rec Visits	Percent Change	Recreation Visitor Days	Percent Change	Non-Rec Visitor Days	Percent Change
Minidoka NHS	13,647	18.0%	0	0.0%	1,958	22.2%	0	0.0%
Minute Man NHP	1,017,326	0.2%	0	0.0%	127,166	0.2%	0	0.0%
Minuteman Missile NHS ³	125,776	-9.7%	0	0.0%	8,128	23.2%	0	0.0%
Mississippi NRRA	374,682	-10.2%	0	0.0%	53,154	-14.2%	0	0.0%
Missouri NRR	129,280	0.5%	0	0.0%	10,773	0.5%	0	0.0%
Mojave NPRES	841,516	6.9%	0	0.0%	421,008	6.6%	0	0.0%
Monocacy NB ³	144,969	70.8%	90	100.0%	25,379	139.1%	21	100.0%
Montezuma Castle NM	376,254	-3.6%	0	0.0%	31,355	-3.6%	0	0.0%
Moores Creek NB	77,006	31.6%	0	0.0%	4,404	44.1%	0	0.0%
Morristown NHP	271,330	-2.9%	0	0.0%	65,975	-2.5%	0	0.0%
Mount Rainier NP	1,501,621	-1.1%	746,897	1.3%	1,555,057	5.3%	62,241	1.3%
Mount Rushmore NMEM	1,963,540	-15.0%	676,978	-15.2%	215,443	-15.0%	18,805	-15.2%
Muir Woods NM	812,073	-15.2%	0	0.0%	90,208	-15.2%	0	0.0%
Natchez NHP	182,123	-22.4%	0	0.0%	34,321	-19.0%	0	0.0%
Natchez Trace PKWY	6,296,041	-1.0%	9,160,331	2.1%	2,112,328	-1.1%	763,361	2.1%
National Capital Parks Central ²	1,770,794	-1.6%	0	0.0%	93,270	-4.3%	0	0.0%
National Capital Parks East	1,210,641	-16.4%	32,224,489	-1.3%	170,561	-18.8%	1,762,981	-0.5%
National Park of American Samoa	60,006	109.6%	0	0.0%	10,001	109.6%	0	0.0%
Natural Bridges NM	88,090	-14.6%	800	0.0%	42,676	-14.0%	33	0.0%
Navajo NM	49,983	-18.3%	0	-100.0%	13,036	-9.8%	0	-100.0%
New Bedford Whaling NHP	143,427	-23.3%	0	0.0%	6,210	-23.7%	0	0.0%
New Orleans Jazz NHP	41,049	-24.7%	0	0.0%	6,896	-28.0%	0	0.0%
New River Gorge NR	1,195,721	-3.0%	2,400	0.0%	217,982	2.6%	400	0.0%
Nez Perce NHP	216,068	-29.8%	1,800	0.0%	17,827	4.9%	15	0.0%
Nicodemus NHS	3,540	29.3%	0	0.0%	295	29.3%	0	0.0%

Table 4 (continued). 2019 Recreation Visits / Visitor Days and Non-Recreation Visits / Visitor Days and Percent Change from 2018 by Park

Park Name	Recreation Visits	Percent Change	Non-Rec Visits	Percent Change	Recreation Visitor Days	Percent Change	Non-Rec Visitor Days	Percent Change
Ninety Six NHS	97,295	1.8%	0	0.0%	10,135	1.8%	0	0.0%
Niobrara NSR ⁵	60,812	-1.3%	0	0.0%	38,765	-2.2%	0	0.0%
Noatak NPRES	17,216	5.1%	8,450	0.0%	21,173	8.6%	5,633	0.0%
North Cascades NP	38,208	27.0%	0	0.0%	56,051	9.1%	0	0.0%
Obed W&SR	221,301	1.7%	10,800	0.0%	78,718	0.9%	75	0.0%
Ocmulgee Mounds NHP ⁶	146,925	10.5%	0	0.0%	18,366	10.5%	0	0.0%
Olympic NP	3,245,806	4.6%	718,520	-1.4%	1,408,254	-3.8%	24,550	-1.3%
Oregon Caves NM & PRES ⁴	65,006	-3.6%	520	0.0%	16,251	-33.1%	87	0.0%
Organ Pipe Cactus NM	263,186	1.1%	1,288,060	8.7%	65,178	0.9%	53,669	8.7%
Ozark NSR	1,221,489	-3.4%	0	0.0%	277,660	-1.4%	0	0.0%
Padre Island NS	576,299	-6.4%	1,800	0.0%	343,995	-4.3%	1,200	0.0%
Palo Alto Battlefield NHP	149,733	81.5%	0	0.0%	19,391	59.5%	0	0.0%
Paterson Great Falls NHP ³	276,985	92.9%	0	0.0%	46,042	33.9%	0	0.0%
Pea Ridge NMP	102,753	0.8%	0	0.0%	17,126	0.8%	0	0.0%
Pearl Harbor NMEM ^{4,6}	1,716,535	-3.5%	0	0.0%	429,134	-3.5%	0	0.0%
Pecos NHP	43,834	12.0%	0	0.0%	4,665	15.2%	0	0.0%
Pennsylvania Avenue NHS	125,035	4.5%	0	0.0%	3,438	4.5%	0	0.0%
Perry's Victory & Intl. Peace MEM	121,325	-19.4%	0	0.0%	9,921	-15.5%	0	0.0%
Petersburg NB	235,691	15.4%	357,761	-1.7%	21,081	20.3%	7,453	-1.7%
Petrified Forest NP	643,588	-0.2%	120	0.0%	141,762	-1.4%	10	0.0%
Petroglyph NM	293,957	9.4%	0	0.0%	48,993	9.4%	0	0.0%
Pictured Rocks NL ³	858,715	5.3%	3,456	86.8%	352,197	2.6%	849	1739.4%
Pinnacles NP	177,224	-20.2%	0	0.0%	52,878	-20.2%	0	0.0%
Pipe Spring NM	27,482	9.1%	404	0.0%	3,435	9.1%	75	0.0%
Pipestone NM	77,508	5.8%	0	0.0%	16,147	5.8%	0	0.0%

Table 4 (continued). 2019 Recreation Visits / Visitor Days and Non-Recreation Visits / Visitor Days and Percent Change from 2018 by Park

Park Name	Recreation Visits	Percent Change	Non-Rec Visits	Percent Change	Recreation Visitor Days	Percent Change	Non-Rec Visitor Days	Percent Change
Piscataway Park	329,729	125.3%	0	0.0%	52,306	141.3%	0	0.0%
Point Reyes NS ⁴	2,265,301	-5.5%	25,788	0.0%	949,559	-7.9%	2,149	0.0%
Port Chicago Naval Magazine NMEM	830	27.1%	0	0.0%	138	27.1%	0	0.0%
President W.J. Clinton Birthplace Home NHS	8,758	-19.2%	0	0.0%	730	-19.2%	0	0.0%
President's Park	715,911	-30.9%	0	0.0%	74,269	-41.3%	0	0.0%
Prince William Forest Park	339,693	8.3%	480	0.0%	270,201	-2.4%	80	0.0%
Pu'u'honua o Honaunau NHP	414,410	-10.5%	0	0.0%	34,534	-10.5%	0	0.0%
Pu'ukohola Heiau NHS	133,573	-8.3%	136,310	-2.8%	5,566	-8.3%	1,892	-2.8%
Rainbow Bridge NM	115,108	3.8%	0	0.0%	14,389	3.8%	0	0.0%
Redwood NP	504,722	4.6%	0	0.0%	146,898	-6.4%	0	0.0%
Richmond NBP	197,242	-1.1%	150,033	-0.3%	29,545	-8.3%	3,126	-0.3%
Rio Grande W&SR	324	-1.8%	0	0.0%	3,198	-30.4%	0	0.0%
River Raisin NBP	226,354	-5.9%	6,538	-20.5%	37,726	-5.9%	55	-20.4%
Rock Creek Park	2,416,232	0.9%	12,386,843	0.0%	216,938	-5.4%	516,118	0.0%
Rocky Mountain NP	4,670,053	1.7%	8,750	0.0%	2,627,947	0.5%	2,188	0.0%
Roger Williams NMEM	59,419	-2.1%	83,485	-2.4%	4,266	-2.3%	557	-2.4%
Rosie The Riveter WWII Home Front NHP	50,404	-12.9%	0	0.0%	12,601	-12.9%	0	0.0%
Ross Lake NRA	1,088,528	22.0%	720	0.0%	236,144	-12.6%	60	0.0%
Russell Cave NM ⁵	16,642	-23.0%	0	0.0%	2,406	-19.8%	0	0.0%
Sagamore Hill NHS	36,738	-8.1%	0	0.0%	7,654	-8.1%	0	0.0%
Saguaro NP	1,020,226	6.6%	2,694,738	29.0%	89,691	6.0%	56,141	29.0%
Saint Croix Island IHS	11,613	-3.2%	0	0.0%	1,210	-3.2%	0	0.0%
Saint Croix NSR	638,258	-11.9%	0	0.0%	480,818	-14.6%	0	0.0%

Table 4 (continued). 2019 Recreation Visits / Visitor Days and Non-Recreation Visits / Visitor Days and Percent Change from 2018 by Park

Park Name	Recreation Visits	Percent Change	Non-Rec Visits	Percent Change	Recreation Visitor Days	Percent Change	Non-Rec Visitor Days	Percent Change
Saint Paul's Church NHS	18,537	-14.3%	465	-1.1%	2,108	-11.8%	20	15.9%
Saint-Gaudens NHP ⁶	31,759	-9.8%	0	0.0%	5,141	-10.4%	0	0.0%
Salem Maritime NHS	339,238	12.9%	0	0.0%	16,131	6.0%	0	0.0%
Salinas Pueblo Missions NM	31,672	-8.5%	0	0.0%	5,236	-5.8%	0	0.0%
Salt River Bay NHP & Ecological Pres	5,215	6.8%	0	0.0%	970	6.4%	0	0.0%
San Antonio Missions NHP	1,281,121	6.0%	0	0.0%	143,441	9.9%	0	0.0%
San Francisco Maritime NHP	4,016,598	-4.9%	0	0.0%	317,065	-4.4%	0	0.0%
San Juan Island NHP	292,507	14.7%	74,023	0.0%	39,033	16.5%	1,542	0.0%
San Juan NHS	1,197,345	31.5%	0	0.0%	195,717	33.0%	0	0.0%
Sand Creek Massacre NHS ⁴	5,701	-5.1%	0	0.0%	950	-5.1%	0	0.0%
Santa Monica Mountains NRA ⁴	707,566	-18.4%	111,348	-19.2%	99,295	-23.7%	4,685	-19.1%
Saratoga NHP	145,118	7.1%	74,903	-14.1%	35,754	7.7%	499	-14.1%
Saugus Iron Works NHS	8,150	-23.5%	45,625	0.0%	1,019	-23.5%	381	0.0%
Scotts Bluff NM ⁴	166,007	16.9%	0	0.0%	26,285	16.9%	0	0.0%
Sequoia NP ⁴	1,246,053	1.3%	15,987	-8.5%	3,338,080	4.2%	5,329	-8.5%
Shenandoah NP	1,425,507	12.7%	10,962	0.0%	884,881	3.0%	229	0.0%
Shiloh NMP	360,989	-4.0%	152,902	-5.6%	43,452	-4.5%	2,548	-5.6%
Sitka NHP	232,876	18.2%	0	0.0%	11,811	17.8%	0	0.0%
Sleeping Bear Dunes NL	1,570,001	-4.5%	0	0.0%	725,551	-0.2%	0	0.0%
Springfield Armory NHS	20,979	4.4%	0	0.0%	3,497	4.3%	0	0.0%
Statue of Liberty NM	4,240,461	-2.2%	0	0.0%	1,590,173	-2.2%	0	0.0%
Steamtown NHS	105,403	7.6%	11,592	0.0%	12,801	6.6%	483	0.0%
Stones River NB	284,516	6.8%	1,440	-0.7%	33,153	-11.6%	20	-4.0%
Stonewall NM	2,088,929	308.6%	0	0.0%	170,549	302.8%	0	0.0%

Table 4 (continued). 2019 Recreation Visits / Visitor Days and Non-Recreation Visits / Visitor Days and Percent Change from 2018 by Park

Park Name	Recreation Visits	Percent Change	Non-Rec Visits	Percent Change	Recreation Visitor Days	Percent Change	Non-Rec Visitor Days	Percent Change
Sunset Crater Volcano NM	108,379	3.6%	12,000	0.0%	11,289	3.6%	333	0.0%
Tallgrass Prairie NPRES	33,750	21.8%	0	0.0%	5,625	21.8%	0	0.0%
Thaddeus Kosciuszko NMEM	1,921	-7.5%	0	0.0%	40	-7.7%	0	0.0%
Theodore Roosevelt Birthplace NHS ^{3,5}	25,978	12.2%	152	38.2%	2,306	10.7%	2	-89.6%
Theodore Roosevelt Inaugural NHS	26,994	-1.9%	0	0.0%	4,240	-6.8%	0	0.0%
Theodore Roosevelt Island	151,500	0.0%	0	0.0%	22,725	0.0%	0	0.0%
Theodore Roosevelt NP	691,658	-7.7%	6,578	0.0%	221,494	-1.5%	181	0.0%
Thomas Edison NHP	42,224	-10.7%	0	0.0%	4,459	-18.5%	0	0.0%
Thomas Jefferson MEM	3,096,895	-3.2%	0	0.0%	129,037	-3.2%	0	0.0%
Thomas Stone NHS	8,020	-2.8%	0	0.0%	334	-2.8%	0	0.0%
Timpanogos Cave NM	103,512	-14.7%	0	0.0%	17,016	-20.9%	0	0.0%
Timucuan EHP	1,205,065	6.2%	0	0.0%	251,141	1.3%	0	0.0%
Tonto NM ⁴	28,853	-27.5%	0	0.0%	4,244	-28.3%	0	0.0%
Tumacacori NHP	39,704	-2.7%	0	0.0%	5,008	-2.5%	0	0.0%
Tuskegee Airmen NHS	30,097	12.2%	0	0.0%	3,762	12.2%	0	0.0%
Tuskegee Institute NHS	36,395	-2.9%	0	0.0%	4,557	-25.6%	0	0.0%
Tuzigoot NM	98,538	0.5%	0	0.0%	8,212	0.5%	0	0.0%
Ulysses S. Grant NHS	39,449	-9.5%	0	0.0%	4,931	-9.5%	0	0.0%
Upper Delaware S&RR ^{3,5}	215,537	-2.5%	325,978	15204.1%	66,940	-12.8%	2,204	4871.1%
Valley Forge NHP ³	2,259,944	20.1%	0	0.0%	376,657	20.1%	0	0.0%
Vanderbilt Mansion NHS	326,822	-4.1%	0	0.0%	34,282	-4.4%	0	0.0%
Vicksburg NMP	576,456	21.5%	0	0.0%	106,741	22.0%	0	0.0%
Vietnam Veterans MEM	4,580,587	-2.9%	0	0.0%	190,858	-2.9%	0	0.0%
Virgin Islands NP ⁴	133,398	18.8%	238,252	19.2%	68,366	18.8%	4,964	19.2%

Table 4 (continued). 2019 Recreation Visits / Visitor Days and Non-Recreation Visits / Visitor Days and Percent Change from 2018 by Park

Park Name	Recreation Visits	Percent Change	Non-Rec Visits	Percent Change	Recreation Visitor Days	Percent Change	Non-Rec Visitor Days	Percent Change
Voyageurs NP ⁴	232,974	-2.8%	0	0.0%	98,407	-1.0%	0	0.0%
Waco Mammoth NM	111,331	4.1%	7,835	260.1%	12,095	8.1%	257	1603.3%
Walnut Canyon NM	152,333	-9.2%	480	0.0%	16,503	-9.2%	20	0.0%
War in the Pacific NHP ⁴	432,213	11.4%	1,059	3.8%	36,198	11.0%	44	4.1%
Washington Monument ⁴	108,410	—	0	—	9,034	—	0	—
Washita Battlefield NHS ⁴	9,119	-32.1%	0	0.0%	760	-32.1%	0	0.0%
Weir Farm NHS	38,700	9.4%	0	0.0%	6,028	9.8%	0	0.0%
Whiskeytown NRA ^{3,4,5}	687,159	17.3%	6,084	1.3%	191,039	2.7%	949	0.4%
White House	454,117	-6.6%	0	0.0%	25,606	-19.2%	0	0.0%
White Sands NP ⁶	608,785	1.0%	0	0.0%	126,825	0.5%	0	0.0%
Whitman Mission NHS	48,481	-1.6%	888	0.0%	4,040	-1.6%	37	0.0%
William Howard Taft NHS	32,396	7.3%	0	0.0%	2,700	7.3%	0	0.0%
Wilson's Creek NB	232,838	5.7%	0	0.0%	38,806	5.7%	0	0.0%
Wind Cave NP ⁴	615,350	-6.3%	240,685	-8.0%	144,615	-12.6%	6,619	-8.0%
Wolf Trap NP for the Performing Arts	402,580	10.1%	0	0.0%	134,193	10.1%	0	0.0%
Women's Rights NHP	39,064	-8.7%	1,344	0.0%	3,470	-4.4%	56	0.0%
World War II Memorial	4,831,327	3.8%	0	0.0%	201,305	3.8%	0	0.0%
Wrangell-St. Elias NP & PRES	74,518	-6.2%	0	0.0%	285,652	-6.2%	0	0.0%
Wright Brothers NMEM	400,135	10.9%	2,190	0.0%	33,345	10.9%	91	0.0%
Wupatki NM	187,059	-8.8%	6,531	0.0%	31,218	-8.8%	327	0.0%
Yellowstone NP ⁴	4,020,288	-2.3%	1,187,528	-3.4%	6,695,785	-5.0%	58,236	-7.1%
Yosemite NP ⁴	4,422,861	10.3%	163,602	7.9%	5,459,047	10.0%	344,959	7.9%
Yukon-Charley Rivers NPRES	1,114	-12.4%	0	0.0%	3,982	-46.5%	0	0.0%
Zion NP ^{3,5}	4,488,268	3.9%	21,900	0.0%	2,392,962	-4.0%	456	0.0%
NPS Total	327,516,619	2.9%	169,448,640	-0.5%	119,164,157	2.0%	7,742,523	0.5%

Average Recreation Visits per Day to NPS Units

Visitation to NPS units varies throughout the year. The service-wide average of visits per day, broken down by month, is shown in Figure 5. July had the highest average visits per day at 1,459,056 (1.3% increase over July 2018). January was the lowest at 336,162 (17.5% decrease over January 2018). Visits in January and February were down compared to 2018; visits in all other months were up. December saw the largest percent increase over 2018 at 12%.

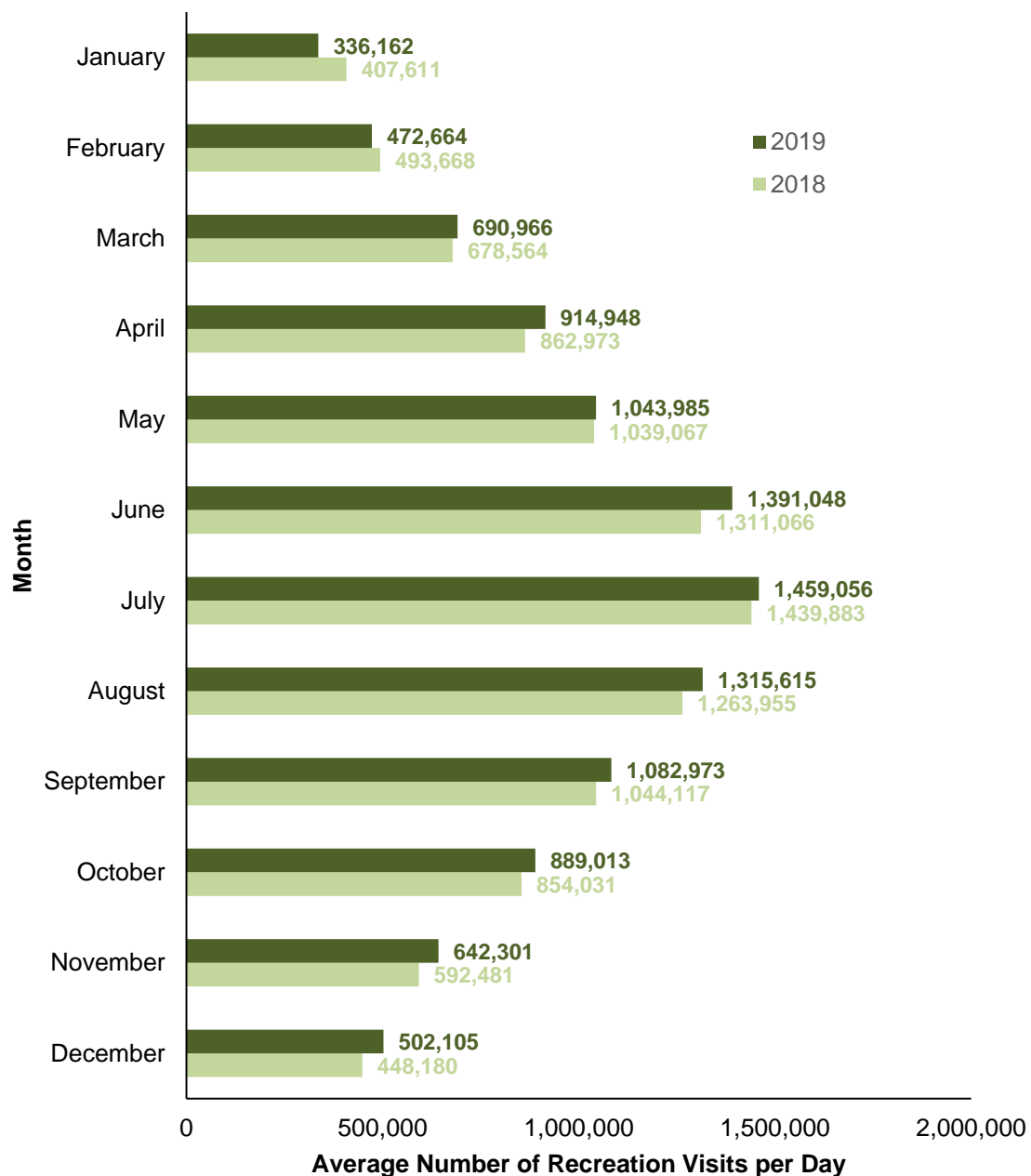


Figure 5. Average Number of Recreation Visits per Day to NPS Units by Month, 2018 and 2019

Overnight Stays

In addition to recreation visits, the National Park Service tracks the number of overnight stays, which are defined as one night within a park by a visitor. One visitor staying 10 nights or 10 visitors staying one night apiece both equal 10 overnight stays. Table 5 shows the number of overnight stays by NPS unit in concession operated lodging, concession operated campgrounds, NPS campgrounds (separated by tent overnights and RV overnights), backcountry and miscellaneous locations (any location or accommodation not otherwise defined such as sleeping aboard boats or stays in designated group campsites). The number of non-recreation overnight stays, such as leaseholders, line shacks for ranchers, and government personnel other than NPS employees, are also included. In 2019, NPS units recorded 13,860,047 overnight stays which is a very slight decrease from 2018 (-0.65%). Figure 6 shows the trend for overnight stays by category for the most recent 25 years (1995 to 2019). Superscript references can be found in the Endnotes.

Table 5. 2019 Overnight Stays by Unit

Park	Concession Operated Lodging	Concession Operated Camping	NPS Tent Camping	NPS RV Camping	Backcountry Camping	Misc. Overnight Stays	Non- Recreation Overnight Stays	Total*
Acadia NP	0	1,090	140,985	57,696	1,284	11,674	0	212,729
Amistad NRA ⁴	0	0	0	10,192	0	2,220	0	12,412
Aniakchak NM & PRES	0	0	0	0	230	0	0	230
Antietam NB	0	0	0	0	0	422	0	422
Apostle Islands NL	0	0	0	0	7,431	7,644	0	15,075
Arches NP ⁴	0	0	17,523	16,290	405	4,688	0	38,906
Assateague Island NS	0	0	42,649	25,125	1,549	11,306	0	80,629
Badlands NP ³	7,092	19,820	3,490	930	2,493	0	0	33,825
Bandelier NM	0	0	4,813	6,224	585	5,676	0	17,298
Bering Land Bridge NPRES	0	0	0	0	1,123	0	482	1,605
Big Bend NP	49,227	12,618	54,402	28,845	23,320	37,020	0	205,432
Big Cypress NPRES ³	0	0	2,982	11,400	4,026	7	0	18,415
Big South Fork NRRRA	3,343	0	6,087	29,425	8,417	2,628	0	49,900
Big Thicket NPRES ³	0	0	0	0	1,536	0	0	1,536

*Total overnight stays may vary from sum of categories due to rounding

Table 5 (continued). 2019 Overnight Stays by Unit

Park	Concession Operated Lodging	Concession Operated Camping	NPS Tent Camping	NPS RV Camping	Backcountry Camping	Misc. Overnight Stays	Non- Recreation Overnight Stays	Total*
Bighorn Canyon NRA ^{3,5}	0	9,588	11	78	0	0	0	9,677
Biscayne NP ³	0	0	238	0	0	3,079	0	3,317
Black Canyon of the Gunnison NP	0	0	17,796	12,273	1,861	0	0	31,930
Blue Ridge PKWY	50,197	0	66,384	42,913	1,089	1,294	0	161,877
Bryce Canyon NP ⁴	52,566	0	30,080	23,653	1,394	509	0	108,202
Buck Island Reef NM ⁴	0	0	0	0	0	3,840	0	3,840
Buffalo NR	2,821	0	37,004	10,532	20,367	13,324	0	84,048
Canaveral NS	0	0	0	0	2,453	0	0	2,453
Canyon de Chelly NM	15,887	14,437	0	0	810	0	0	31,134
Canyonlands NP ^{3,5}	0	0	9,135	7,785	77,695	508	0	95,123
Cape Cod NS	1,401	0	0	0	0	8,398	0	9,799
Cape Hatteras NS ⁴	0	0	44,236	45,405	0	4,439	324	94,404
Cape Krusenstern NM	0	0	0	0	6,425	0	5,925	12,350
Cape Lookout NS ^{3,4}	0	0	0	0	2,229	10,110	0	12,339
Capitol Reef NP	0	0	25,665	23,993	4,010	2,738	0	56,406
Carlsbad Caverns NP	0	0	0	0	225	0	0	225
Catoctin Mountain Park	0	0	3,845	580	631	20,385	0	25,441
Cedar Breaks NM	0	0	2,004	2,028	0	0	0	4,032
Chaco Culture NHP	0	0	8,697	6,415	0	1,081	0	16,193
Channel Islands NP ³	0	0	0	0	23,411	45,077	7,888	76,376
Chesapeake & Ohio Canal NHP	0	0	6,518	592	0	2,771	0	9,881
Chickamauga & Chattanooga NMP	0	0	0	0	0	1,677	0	1,677
Chickasaw NRA	0	0	55,145	47,139	0	25,792	0	128,076
Chiricahua NM ⁴	0	0	7,157	5,231	0	1,199	0	13,587

*Total overnight stays may vary from sum of categories due to rounding

Table 5 (continued). 2019 Overnight Stays by Unit

Park	Concession Operated Lodging	Concession Operated Camping	NPS Tent Camping	NPS RV Camping	Backcountry Camping	Misc. Overnight Stays	Non- Recreation Overnight Stays	Total*
Colorado NM	0	0	17,159	18,039	278	0	0	35,476
Congaree NP	0	0	0	0	881	8,750	0	9,631
Crater Lake NP	34,616	12,478	4,694	0	2,436	0	0	54,224
Craters of the Moon NM & PRES	0	0	6,001	9,679	50	49	0	15,779
Cumberland Gap NHP ⁵	0	0	3,299	12,630	548	243	0	16,720
Cumberland Island NS	0	0	21,185	0	4,495	0	0	25,680
Curecanti NRA	0	0	20,608	42,588	365	2,858	0	66,419
Cuyahoga Valley NP	7,777	0	0	0	0	1,439	0	9,216
Death Valley NP ⁴	27,759	4,360	74,511	97,574	1,915	454	0	206,573
Delaware Water Gap NRA	0	7,507	0	0	14,256	21,003	0	42,766
Denali NP & PRES ⁵	0	26,382	0	0	26,211	0	0	52,593
Devils Tower NM ³	0	0	5,639	7,305	0	0	0	12,944
Dinosaur NM	0	0	18,729	17,210	30,338	2,475	0	68,752
Dry Tortugas NP ³	0	0	6,786	0	0	8,855	2,586	18,227
El Morro NM	0	0	2,512	1,767	0	0	0	4,279
Everglades NP ^{3,5}	0	26,901	0	0	12,732	923	0	40,556
Fire Island NS	0	5,315	0	0	3,198	12,548	0	21,061
Fort Donelson NB	0	0	0	0	0	3	0	3
Fort Necessity NB	0	0	0	0	0	579	0	579
Fort Sumter and Fort Moultrie NHP ⁶	0	0	0	0	0	1	0	1
Gates of the Arctic NP & PRES	0	0	0	0	4,058	0	0	4,058
Gateway NRA	0	0	16,490	3,287	0	2,207	0	21,984
Gauley River NRA	0	0	3,915	1,475	0	0	0	5,390
Gettysburg NMP	0	0	0	0	0	7,888	0	7,888

*Total overnight stays may vary from sum of categories due to rounding

Table 5 (continued). 2019 Overnight Stays by Unit

Park	Concession Operated Lodging	Concession Operated Camping	NPS Tent Camping	NPS RV Camping	Backcountry Camping	Misc. Overnight Stays	Non- Recreation Overnight Stays	Total*
Glacier Bay NP & PRES	14,408	0	744	0	4,211	14,938	2,840	37,141
Glacier NP	119,960	0	118,181	126,099	34,759	926	0	399,925
Glen Canyon NRA	66,744	74,529	11,757	3,648	89,782	648,607	0	895,067
Golden Gate NRA	46,803	0	3,393	0	730	9,173	0	60,099
Grand Canyon NP	575,922	47,401	120,208	63,565	320,032	25,201	0	1,152,329
Grand Portage NM	0	0	0	0	57	0	0	57
Grand Teton NP	214,935	312,155	0	0	36,292	0	0	563,382
Great Basin NP	0	0	20,735	17,813	48	328	0	38,924
Great Sand Dunes NP & PRES	0	0	29,376	21,867	4,933	7,889	0	64,065
Great Smoky Mountains NP	10,955	0	155,409	113,540	94,569	18,828	0	393,301
Greenbelt Park ^{3,4}	0	0	5,938	5,928	0	393	0	12,259
Guadalupe Mountains NP ^{3,5}	0	0	10,621	6,383	2,838	1,464	0	21,306
Guilford Courthouse NMP	0	0	0	0	0	15	0	15
Gulf Islands NS ³	0	0	35,140	145,393	0	3,852	0	184,385
Haleakala NP ⁵	0	0	9,071	0	1,616	1,825	0	12,512
Hawaii Volcanoes NP	23,558	4,509	1,091	41	3,658	58,392	0	91,249
Hot Springs NP	0	0	1,455	24,251	0	0	0	25,706
Hovenweep NM	0	0	877	1,321	0	0	0	2,198
Indiana Dunes NP ⁶	0	0	16,316	6,468	0	0	0	22,784
Isle Royale NP	12,308	172	4,902	0	26,899	9,932	1,035	55,248
Joshua Tree NP ³	0	0	232,300	78,192	18,184	60,997	0	389,673
Katmai NP & PRES	4,268	0	2,560	0	458	0	0	7,286
Kenai Fjords NP	0	0	1,076	0	566	0	0	1,642
Kings Canyon NP	57,092	0	103,643	32,589	15,650	2,411	0	211,385

*Total overnight stays may vary from sum of categories due to rounding

Table 5 (continued). 2019 Overnight Stays by Unit

Park	Concession Operated Lodging	Concession Operated Camping	NPS Tent Camping	NPS RV Camping	Backcountry Camping	Misc. Overnight Stays	Non- Recreation Overnight Stays	Total*
Kings Mountain NMP	0	0	0	0	67	0	0	67
Klondike Gold Rush NHP Alaska ²	0	0	1,790	0	5,821	0	0	7,611
Kobuk Valley NP	0	0	0	0	7,050	0	7,100	14,150
John D. Rockefeller, Jr. MEM PKWY	8,588	4,743	0	0	0	0	0	13,331
Lake Chelan NRA	9,548	0	0	0	7,398	0	0	16,946
Lake Clark NP & PRES	0	0	0	0	686	0	0	686
Lake Mead NRA	35,399	134,594	120,985	153,981	219,510	49,367	0	713,836
Lake Meredith NRA	0	0	12,636	57,418	0	0	0	70,054
Lake Roosevelt NRA	2,716	2,948	31,402	38,921	2,649	2,952	0	81,588
Lassen Volcanic NP ^{3,5}	5,487	2,154	56,856	29,916	6,685	12,634	0	113,732
Lava Beds NM	0	0	7,638	3,574	27	22	0	11,261
Mammoth Cave NP ^{3,4}	28,260	0	36,695	10,741	3,182	4,697	0	83,575
Mesa Verde NP ⁴	21,489	0	33,621	26,110	0	258	0	81,478
Mojave NPRES	0	0	110	120	0	20	0	250
Moore's Creek NB	0	0	0	0	262	0	0	262
Mount Rainier NP	35,243	0	83,353	30,408	47,703	8,676	0	205,383
Natchez Trace PKWY	0	0	5,589	9,300	0	0	0	14,889
Natural Bridges NM	0	0	3,096	3,263	0	0	0	6,359
Navajo NM	0	0	2,378	2,250	287	127	0	5,042
New River Gorge NR	0	0	5,074	1,032	0	0	0	6,106
Noatak NPRES	0	0	0	0	5,650	0	5,750	11,400
North Cascades NP	0	0	0	0	27,581	0	0	27,581
Obed W&SR	0	0	8,686	0	300	0	0	8,986

*Total overnight stays may vary from sum of categories due to rounding

Table 5 (continued). 2019 Overnight Stays by Unit

Park	Concession Operated Lodging	Concession Operated Camping	NPS Tent Camping	NPS RV Camping	Backcountry Camping	Misc. Overnight Stays	Non- Recreation Overnight Stays	Total*
Olympic NP	76,220	28,645	134,569	73,701	96,864	190	0	410,189
Organ Pipe Cactus NM	0	0	6,920	24,974	277	65	0	32,236
Ozark NSR	198	0	63,168	19,788	11,005	22,897	0	117,056
Padre Island NS	0	0	20,010	35,225	13,601	412	0	69,248
Perry's Victory & Intl. Peace MEM	0	0	0	0	0	124	0	124
Petrified Forest NP	0	0	0	0	1,451	0	0	1,451
Pictured Rocks NL ³	0	0	16,851	6,212	28,179	0	0	51,242
Point Reyes NS ⁴	9,306	24	0	0	37,151	0	0	46,481
Prince William Forest Park	0	30,151	21,599	1,551	305	50,987	0	104,593
Redwood NP	0	0	2,721	0	3,276	1,818	0	7,815
Rio Grande W&SR	0	0	0	0	1,842	0	0	1,842
Rocky Mountain NP	0	0	112,791	64,809	41,213	877	0	219,690
Ross Lake NRA	7,938	0	39,616	14,118	10,056	990	0	72,718
Saguaro NP	0	0	0	0	2,185	0	0	2,185
Saint Croix NSR	0	0	0	0	68,164	0	0	68,164
San Francisco Maritime NHP	0	0	0	0	0	231	0	231
Santa Monica Mountains NRA ⁴	0	0	0	0	144	0	0	144
Sequoia NP ⁴	69,616	0	133,088	68,679	29,871	256	0	301,510
Shenandoah NP	95,395	0	119,649	59,820	32,391	139	0	307,394
Sleeping Bear Dunes NL	0	0	59,238	61,677	19,287	0	0	140,202
Theodore Roosevelt NP	0	0	16,862	20,524	735	2,301	0	40,422
Tumacacori NHP	0	0	0	0	0	34	0	34
Voyageurs NP ⁴	3,727	0	0	0	45,262	25,122	0	74,111
Whiskeytown NRA ^{3,4,5}	0	6,980	682	513	0	2,530	0	10,705

*Total overnight stays may vary from sum of categories due to rounding

Table 5 (continued). 2019 Overnight Stays by Unit

Park	Concession Operated Lodging	Concession Operated Camping	NPS Tent Camping	NPS RV Camping	Backcountry Camping	Misc. Overnight Stays	Non- Recreation Overnight Stays	Total*
White Sands NP ⁶	0	0	0	0	4,243	0	0	4,243
Wind Cave NP ⁴	0	0	3,632	3,715	369	505	0	8,221
Wupatki NM	0	0	0	0	28	0	0	28
Yellowstone NP ⁴	653,635	474,653	81,022	80,294	38,236	9,907	0	1,337,747
Yosemite NP ⁴	682,273	0	469,585	211,948	155,578	30,411	0	1,549,795
Yukon-Charley Rivers NPRES	0	0	0	0	1,898	0	670	2,568
Zion NP ^{3,5}	82,640	0	118,290	78,704	18,320	21,619	0	319,573
NPS Total	3,227,317	1,264,154	3,503,369	2,466,682	1,948,831	1,415,120	34,600	13,860,047

*Total overnight stays may vary from sum of categories due to rounding

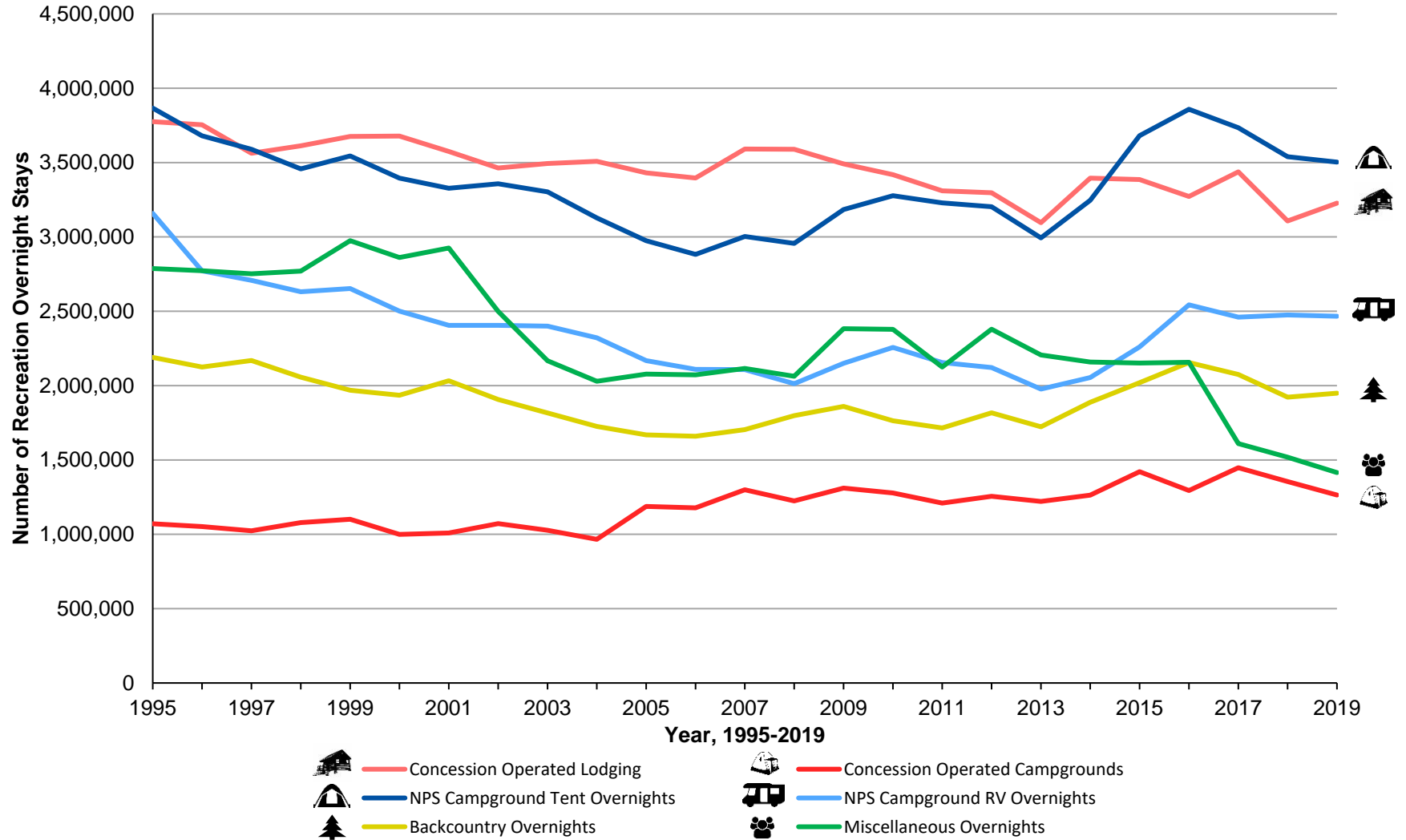


Figure 6. Recreation Overnight Stays by Category and Year, 1995-2019

Affiliated and Non-Reporting Areas

Areas affiliated with, but not officially considered a unit of, the National Park System do not report visitor use data. Also, some NPS units were unable to report for a variety of reasons such as joint administration, non-federal land ownership or new parks that lack staff and facilities for management of visitor statistics. Lists of affiliated and non-reporting areas are provided below. Superscript references can be found in the Endnotes.

Affiliated Areas

- Aleutian World War II National Historic Area
- American Memorial Park
- Benjamin Franklin National Memorial
- Chicago Portage National Historic Site
- Chimney Rock National Historic Site
- Fallen Timbers Battlefield and Fort Miamis National Historic Site
- Father Marquette National Memorial
- Gloria Dei (Old Swedes') Church National Historic Site
- Green Springs National Historic Landmark District
- Historic Camden Revolutionary War Site
- Ice Age National Scientific Reserve
- International Peace Garden
- Inupiat Heritage Center
- Jamestown National Historic Site
- Kate Mullany National Historic Site
- Lower East Side Tenement National Historic Site
- Natural Bridge State Park
- Oklahoma City National Memorial
- Parkers Crossroads Battlefield
- Pinelands National Reserve
- Red Hill Patrick Henry National Memorial
- Roosevelt Campobello International Park
- Thomas Cole National Historic Site
- Touro Synagogue National Historic Site
- Wing Lake Museum of the Asian Pacific American Experience

Areas Not Reporting Visitor Use

- Alagnak Wild River
- Appalachian National Scenic Trail
- Birmingham Civil Rights National Monument
- Blackstone River Valley National Historical Park
- Boston Harbor Islands National Recreation Area
- Brices Cross Roads National Battlefield Site
- Camp Nelson National Monument
- Castle Mountains National Monument
- Cedar Creek and Belle Grove National Historical Park
- Constitution Gardens²
- Delaware National Scenic River
- Ebey's Landing National Historical Reserve
- First State National Historical Park
- Fort Monroe National Monument
- Freedom Riders National Monument
- Great Egg Harbor National Scenic and Recreational River
- Harriet Tubman National Historical Park
- Harriet Tubman Underground Railroad National Historical Park
- Hohokam Pima National Monument
- Honouliuli National Historic Site⁶
- Katahdin Woods and Waters National Monument
- Natchez Trace National Scenic Trail
- National Mall
- Potomac Heritage National Scenic Trail
- Poverty Point National Monument
- Pullman National Monument
- Reconstruction Era National Historical Park⁶
- Tule Lake National Monument¹
- Tule Springs Fossil Beds National Monument
- Tupelo National Battlefield
- Valles Caldera National Preserve

- Virgin Islands Coral Reef National Monument
- Yucca House National Monument
- World War I Memorial

Recreation Visits / Visitor Days by State and U.S. Territory

Table 6 documents the number of recreation visits and visitor days for all NPS units that reported visitor use data in 2019 by state or territory and displays the percent change from the previous year. It is an expansion of Table 2 (2019 Recreation Visits by State and U.S. Territory Compared to 2018) and organizes recreation data in Table 4 (2019 Recreation Visits / Visitor Days and Non-Recreation Visits / Visitor Days by Park and Percent Change from 2018) by state. Superscript references can be found in the Endnotes.

Table 6. 2019 Recreation Visits / Visitor Days and Percent Change from 2018 by State and U.S. Territory

State	Park	Recreation Visits*	Percent Change**	Recreation Visitor Days*	Percent Change**
Alabama	Horseshoe Bend NMP ^{3,5}	45,372	-6.4%	11,749	24.7%
	Little River Canyon NPRES ³	649,986	47.3%	132,310	25.3%
	Natchez Trace PKWY	440,724	-1.0%	147,863	-1.1%
	Russell Cave NM ⁵	16,642	-23.0%	2,406	-19.8%
	Tuskegee Airmen NHS	30,097	12.2%	3,762	12.2%
	Tuskegee Institute NHS	36,395	-2.9%	4,557	-25.6%
	Subtotal Alabama	1,219,216	19.4%	302,647	9.3%
Alaska	Aniakchak NM & PRES	100	0.0%	460	-2.1%
	Bering Land Bridge NPRES	2,642	0.0%	661	0.0%
	Cape Krusenstern NM	16,226	7.5%	3,819	10.5%
	Denali NP & PRES ⁵	601,152	1.1%	552,892	1.3%
	Gates of the Arctic NP & PRES	10,518	9.7%	8,531	-44.9%
	Glacier Bay NP & PRES	672,087	12.4%	713,718	11.2%
	Katmai NP & PRES	84,167	122.6%	21,395	10.1%
	Kenai Fjords NP	356,601	10.9%	97,998	6.5%
	Klondike Gold Rush NHP Alaska ²	1,116,161	9.7%	383,146	10.0%
	Kobuk Valley NP	15,766	5.5%	4,899	8.7%

*Total of parks by state may not equal state subtotals due to rounding in underlying calculations

**Percents will not add to state subtotals because each row is a separate percent change by park

Table 6 (continued). 2019 Recreation Visits / Visitor Days and Percent Change from 2018 by State and U.S. Territory

State	Park	Recreation Visits*	Percent Change**	Recreation Visitor Days*	Percent Change**
Alaska (continued)	Lake Clark NP & PRES	17,157	18.5%	4,117	-73.6%
	Noatak NPRES	17,216	5.1%	21,173	8.6%
	Sitka NHP	232,876	18.2%	11,811	17.8%
	Wrangell-St. Elias NP & PRES	74,518	-6.2%	285,652	-6.2%
	Yukon-Charley Rivers NPRES	1,114	-12.4%	3,982	-46.5%
	Subtotal Alaska	3,218,301	10.2%	2,114,253	4.2%
American Samoa	National Park of American Samoa	60,006	109.6%	10,001	109.6%
	Subtotal American Samoa	60,006	109.6%	10,001	109.6%
Arizona	Canyon de Chelly NM	460,757	4.9%	261,512	5.6%
	Casa Grande Ruins NM	68,379	8.5%	7,762	8.5%
	Chiricahua NM ⁴	60,655	0.1%	27,926	2.3%
	Coronado NMEM	130,328	26.3%	12,949	32.2%
	Fort Bowie NHS	7,577	-9.8%	1,263	-9.8%
	Glen Canyon NRA	841,034	-2.9%	417,686	-3.4%
	Grand Canyon NP	5,974,411	-6.4%	7,832,928	-6.5%
	Hubbell Trading Post NHS	50,285	27.8%	2,165	27.8%
	Lake Mead NRA	1,874,761	-1.1%	1,259,981	4.7%
	Montezuma Castle NM	376,254	-3.6%	31,355	-3.6%
	Navajo NM	49,983	-18.3%	13,036	-9.8%
	Organ Pipe Cactus NM	263,186	1.1%	65,178	0.9%
	Petrified Forest NP	643,588	-0.2%	141,762	-1.4%
	Pipe Spring NM	27,482	9.1%	3,435	9.1%
	Saguaro NP	1,020,226	6.6%	89,691	6.0%

*Total of parks by state may not equal state subtotals due to rounding in underlying calculations

**Percents will not add to state subtotals because each row is a separate percent change by park

Table 6 (continued). 2019 Recreation Visits / Visitor Days and Percent Change from 2018 by State and U.S. Territory

State	Park	Recreation Visits*	Percent Change**	Recreation Visitor Days*	Percent Change**
Arizona (continued)	Sunset Crater Volcano NM	108,379	3.6%	11,289	3.6%
	Tonto NM ⁴	28,853	-27.5%	4,244	-28.3%
	Tumacacori NHP	39,704	-2.7%	5,008	-2.5%
	Tuzigoot NM	98,538	0.5%	8,212	0.5%
	Walnut Canyon NM	152,333	-9.2%	16,503	-9.2%
	Wupatki NM	187,059	-8.8%	31,218	-8.8%
	Subtotal Arizona	12,463,772	-3.0%	10,245,102	-4.5%
Arkansas	Arkansas Post NMEM	28,519	-5.3%	3,565	-5.3%
	Buffalo NR	1,326,282	6.9%	545,634	2.9%
	Fort Smith NHS	125,500	-8.1%	7,180	-10.2%
	Hot Springs NP	1,467,153	-2.6%	112,748	0.9%
	Little Rock Central High School NHS	168,918	13.3%	14,077	13.3%
	Pea Ridge NMP	102,753	0.8%	17,126	0.8%
	President W.J. Clinton Birthplace Home NHS	8,758	-19.2%	730	-19.2%
	Subtotal Arkansas	3,227,883	1.6%	701,060	2.5%
California	Cabrillo NM	761,485	-9.6%	94,917	-9.5%
	Cesar E. Chavez NM	16,490	29.1%	687	29.1%
	Channel Islands NP ³	409,630	11.8%	450,954	45.3%
	Death Valley NP ⁴	1,740,945	3.7%	1,002,110	2.3%
	Devils Postpile NM	147,864	5.8%	43,127	5.8%
	Eugene O'Neill NHS	2,944	-14.2%	528	0.1%
	Fort Point NHS	1,421,349	1.5%	65,119	-2.7%

*Total of parks by state may not equal state subtotals due to rounding in underlying calculations

**Percents will not add to state subtotals because each row is a separate percent change by park

Table 6 (continued). 2019 Recreation Visits / Visitor Days and Percent Change from 2018 by State and U.S. Territory

State	Park	Recreation Visits*	Percent Change**	Recreation Visitor Days*	Percent Change**
California (continued)	Golden Gate NRA	15,002,227	-1.5%	3,263,815	-2.5%
	John Muir NHS	40,725	-13.3%	5,091	-13.3%
	Joshua Tree NP ³	2,988,547	1.6%	1,457,488	-0.9%
	Kings Canyon NP	632,110	-9.6%	1,752,208	-8.1%
	Lassen Volcanic NP ^{3,5}	517,039	3.5%	457,551	1.9%
	Lava Beds NM	109,630	-14.2%	34,104	-11.0%
	Manzanar NHS	97,380	-6.4%	12,172	-6.4%
	Mojave NPRES	841,516	6.9%	421,008	6.6%
	Muir Woods NM	812,073	-15.2%	90,208	-15.2%
	Pinnacles NP	177,224	-20.2%	52,878	-20.2%
	Point Reyes NS ⁴	2,265,301	-5.5%	949,559	-7.9%
	Port Chicago Naval Magazine NMEM	830	27.1%	138	27.1%
	Redwood NP	504,722	4.6%	146,898	-6.4%
	Rosie The Riveter WWII Home Front NHP	50,404	-12.9%	12,601	-12.9%
	San Francisco Maritime NHP	4,016,598	-4.9%	317,065	-4.4%
	Santa Monica Mountains NRA ⁴	707,566	-18.4%	99,295	-23.7%
	Sequoia NP ⁴	1,246,053	1.3%	3,338,080	4.2%
	Whiskeytown NRA ^{3,4,5}	687,159	17.3%	191,039	2.7%
	Yosemite NP ⁴	4,422,861	10.3%	5,459,047	10.0%
	Subtotal California	39,620,672	-0.7%	19,717,684	2.1%
Colorado	Bent's Old Fort NHS	21,674	-8.0%	3,161	-8.0%
	Black Canyon of the Gunnison NP	432,818	40.1%	182,875	18.8%

*Total of parks by state may not equal state subtotals due to rounding in underlying calculations

**Percents will not add to state subtotals because each row is a separate percent change by park

Table 6 (continued). 2019 Recreation Visits / Visitor Days and Percent Change from 2018 by State and U.S. Territory

State	Park	Recreation Visits*	Percent Change**	Recreation Visitor Days*	Percent Change**
Colorado (continued)	Colorado NM	397,032	5.7%	114,770	10.0%
	Curecanti NRA	836,034	-10.2%	326,779	-9.5%
	Dinosaur NM	221,235	-1.8%	113,178	5.1%
	Florissant Fossil Beds NM ^{3,5}	77,340	-2.8%	7,889	-2.8%
	Great Sand Dunes NP & PRES	527,546	19.1%	226,334	9.2%
	Hovenweep NM	15,577	-12.8%	4,530	-10.9%
	Mesa Verde NP ⁴	556,203	-1.3%	330,791	-0.1%
	Rocky Mountain NP	4,670,053	1.7%	2,627,947	0.5%
	Sand Creek Massacre NHS ⁴	5,701	-5.1%	950	-5.1%
	Subtotal Colorado	7,761,213	2.6%	3,939,204	1.0%
Connecticut	Weir Farm NHS	38,700	9.4%	6,028	9.8%
	Subtotal Connecticut	38,700	9.4%	6,028	9.8%
District of Columbia	Belmont-Paul Women's Equality NM	9,913	9.2%	745	-1.1%
	Carter G. Woodson Home NHS	2,381	21.9%	101	20.0%
	Chesapeake & Ohio Canal NHP	1,228,029	15.3%	208,314	11.2%
	Ford's Theatre NHS	572,373	7.3%	67,015	18.3%
	Franklin Delano Roosevelt MEM	3,303,573	0.5%	137,649	0.5%
	Frederick Douglass NHS	61,063	-13.8%	5,089	-13.8%
	Korean War Veterans Memorial	3,841,633	-6.5%	160,068	-6.5%
	Lincoln Memorial	7,808,182	0.0%	325,341	0.0%
	Martin Luther King, Jr. Memorial	3,667,562	2.8%	152,815	2.8%
	Mary McLeod Bethune Council House NHS	3,788	3375.2%	631	3375.2%

*Total of parks by state may not equal state subtotals due to rounding in underlying calculations

**Percents will not add to state subtotals because each row is a separate percent change by park

Table 6 (continued). 2019 Recreation Visits / Visitor Days and Percent Change from 2018 by State and U.S. Territory

State	Park	Recreation Visits*	Percent Change**	Recreation Visitor Days*	Percent Change**
District of Columbia (continued)	National Capital Parks Central ²	1,770,794	-1.6%	93,270	-4.3%
	National Capital Parks East	1,089,578	-16.4%	153,505	-18.8%
	Pennsylvania Avenue NHS	125,035	4.5%	3,438	4.5%
	President's Park	715,911	-30.9%	74,269	-41.3%
	Rock Creek Park	2,416,232	0.9%	216,938	-5.4%
	Thomas Jefferson MEM	3,096,895	-3.2%	129,037	-3.2%
	Vietnam Veterans MEM	4,580,587	-2.9%	190,858	-2.9%
	Washington Monument ⁴	108,410		9,034	
	White House	454,117	-6.6%	25,606	-19.2%
	World War II Memorial	4,831,327	3.8%	201,305	3.8%
	Subtotal District of Columbia	39,687,383	-1.2%	2,155,029	-3.5%
Florida	Big Cypress NPRES ³	1,007,471	26.8%	282,807	38.8%
	Biscayne NP ³	708,522	51.0%	183,765	40.1%
	Canaveral NS	1,884,122	13.6%	395,875	12.9%
	Castillo de San Marcos NM	673,395	-10.0%	42,087	-10.0%
	De Soto NMEM	187,880	-11.0%	25,834	-11.0%
	Dry Tortugas NP ³	79,200	39.4%	51,100	-14.3%
	Everglades NP ^{3,5}	1,118,300	87.3%	413,616	94.3%
	Fort Caroline NMEM ⁵	187,658	-7.7%	15,638	-7.7%
	Fort Matanzas NM ⁴	593,788	-2.4%	50,116	-2.8%
	Gulf Islands NS ³	4,363,870	37.8%	974,698	26.2%
	Timucuan EHP	1,205,065	6.2%	251,141	1.3%
	Subtotal Florida	12,009,271	24.5%	2,686,676	26.6%

*Total of parks by state may not equal state subtotals due to rounding in underlying calculations

**Percents will not add to state subtotals because each row is a separate percent change by park

Table 6 (continued). 2019 Recreation Visits / Visitor Days and Percent Change from 2018 by State and U.S. Territory

State	Park	Recreation Visits*	Percent Change**	Recreation Visitor Days*	Percent Change**
Georgia	Andersonville NHS	103,635	-25.0%	17,273	-25.0%
	Chattahoochee River NRA	3,393,133	18.1%	1,131,044	18.1%
	Chickamauga & Chattanooga NMP	488,579	3.3%	78,178	1.4%
	Cumberland Island NS	53,904	-3.1%	76,765	-3.2%
	Fort Frederica NM	212,330	15.7%	17,858	15.7%
	Fort Pulaski NM	374,290	-10.9%	77,977	-10.9%
	Jimmy Carter NHS	50,789	-1.7%	4,909	-6.1%
	Kennesaw Mountain NBP	2,621,050	2.8%	349,800	7.2%
	Martin Luther King, Jr. NHP	761,650	18.7%	96,381	17.8%
	Ocmulgee Mounds NHP ⁶	146,925	10.5%	18,366	10.5%
	Subtotal Georgia	8,206,285	9.1%	1,868,550	11.9%
Guam	War in the Pacific NHP ⁴	432,213	11.4%	36,198	11.0%
	Subtotal Guam	432,213	11.4%	36,198	11.0%
Hawaii	Haleakala NP ⁵	994,394	-4.8%	190,756	-9.7%
	Hawaii Volcanoes NP	1,368,376	22.5%	707,659	27.7%
	Kalaupapa NHP ⁴	69,401	-3.8%	13,867	-11.7%
	Kaloko Honokohau NHP	232,921	6.8%	43,883	8.3%
	Pearl Harbor NMEM ^{4,6}	1,716,535	-3.5%	429,134	-3.5%
	Pu'uuhonua o Honaunau NHP	414,410	-10.5%	34,534	-10.5%
	Pu'ukohola Heiau NHS	133,573	-8.3%	5,566	-8.3%
	Subtotal Hawaii	4,929,610	1.9%	1,425,398	8.7%
Idaho	City of Rocks NRES	99,311	-30.2%	28,965	-30.2%
	Craters of the Moon NM & PRES	272,224	3.3%	64,552	-1.0%

*Total of parks by state may not equal state subtotals due to rounding in underlying calculations

**Percents will not add to state subtotals because each row is a separate percent change by park

Table 6 (continued). 2019 Recreation Visits / Visitor Days and Percent Change from 2018 by State and U.S. Territory

State	Park	Recreation Visits*	Percent Change**	Recreation Visitor Days*	Percent Change**
Idaho (continued)	Hagerman Fossil Beds NM	23,768	-10.2%	2,971	-10.2%
	Minidoka NHS	6,275	10.7%	729	17.9%
	Nez Perce NHP	216,068	-29.8%	17,827	4.9%
	Subtotal Idaho	617,646	-17.2%	115,044	-9.9%
Illinois	Lincoln Home NHS	197,816	0.1%	14,640	0.3%
	Subtotal Illinois	197,816	0.1%	14,640	0.3%
Indiana	George Rogers Clark NHP	140,130	15.6%	15,648	15.6%
	Indiana Dunes NP ⁶	2,134,285	21.5%	476,773	21.7%
	Lincoln Boyhood NMEM	138,714	3.6%	13,004	3.6%
	Subtotal Indiana	2,413,129	20.0%	505,426	21.0%
Iowa	Effigy Mounds NM	65,581	18.0%	13,663	18.0%
	Herbert Hoover NHS	125,688	-9.0%	10,474	-9.0%
	Subtotal Iowa	191,269	-1.2%	24,137	4.6%
Kansas	Brown v. Board of Education NHS	21,413	-11.1%	3,569	-11.1%
	Fort Larned NHS	26,958	-7.6%	4,493	-7.6%
	Fort Scott NHS	24,068	-9.1%	3,009	-9.1%
	Nicodemus NHS	3,540	29.3%	295	29.3%
	Tallgrass Prairie NPRES	33,750	21.8%	5,625	21.8%
	Subtotal Kansas	109,729	-0.4%	16,990	-0.3%
Kentucky	Abraham Lincoln Birthplace NHP	238,226	-8.7%	19,852	-8.7%
	Big South Fork NRR	307,703	-1.4%	180,166	-2.7%
	Cumberland Gap NHP ⁵	655,277	3.0%	114,764	12.2%
	Mammoth Cave NP ^{3,4}	551,590	3.4%	365,088	6.7%
	Subtotal Kentucky	1,752,796	0.6%	679,870	4.4%

*Total of parks by state may not equal state subtotals due to rounding in underlying calculations

**Percents will not add to state subtotals because each row is a separate percent change by park

Table 6 (continued). 2019 Recreation Visits / Visitor Days and Percent Change from 2018 by State and U.S. Territory

State	Park	Recreation Visits*	Percent Change**	Recreation Visitor Days*	Percent Change**
Louisiana	Cane River Creole NHP	29,922	11.3%	4,987	11.3%
	Jean Lafitte NHP & PRES	590,329	11.4%	104,174	5.2%
	New Orleans Jazz NHP	41,049	-24.7%	6,896	-28.0%
	Subtotal Louisiana	661,300	8.2%	116,057	2.6%
Maine	Acadia NP	3,437,286	-2.8%	1,932,972	-1.8%
	Saint Croix Island IHS	11,613	-3.2%	1,210	-3.2%
	Subtotal Maine	3,448,899	-2.8%	1,934,182	-1.8%
Maryland	Antietam NB	287,343	-11.9%	50,714	-17.8%
	Assateague Island NS	773,695	9.7%	549,332	10.2%
	Catoctin Mountain Park	296,846	-1.0%	105,943	-0.7%
	Chesapeake & Ohio Canal NHP	3,888,758	15.3%	659,662	11.2%
	Clara Barton NHS	4,100	864.7%	342	864.7%
	Fort McHenry NM & HS	419,545	-13.7%	52,443	-13.7%
	Fort Washington Park	423,868	34.1%	139,596	36.5%
	Greenbelt Park ^{3,4}	128,702	51.0%	43,287	-26.5%
	Hampton NHS	28,234	-4.7%	3,529	-4.7%
	Monocacy NB ³	144,969	70.8%	25,379	139.1%
	National Capital Parks East	121,063	-16.4%	17,056	-18.8%
	Piscataway Park	329,729	125.3%	52,306	141.3%
	Thomas Stone NHS	8,020	-2.8%	334	-2.8%
	Subtotal Maryland	6,854,872	14.1%	1,699,924	10.4%
Massachusetts	Adams NHP	187,400	54.9%	15,587	55.2%
	Boston African American NHS	419,585	2.1%	69,931	2.1%

*Total of parks by state may not equal state subtotals due to rounding in underlying calculations

**Percents will not add to state subtotals because each row is a separate percent change by park

Table 6 (continued). 2019 Recreation Visits / Visitor Days and Percent Change from 2018 by State and U.S. Territory

State	Park	Recreation Visits*	Percent Change**	Recreation Visitor Days*	Percent Change**
Massachusetts (continued)	Boston NHP	3,201,834	4.9%	218,518	-2.7%
	Cape Cod NS	4,096,104	4.3%	669,598	4.8%
	Frederick Law Olmsted NHS	7,791	-20.9%	1,299	-20.9%
	John F. Kennedy NHS	24,838	3.2%	1,035	3.2%
	Longfellow House Washington's HQ NHS	55,012	-9.1%	6,876	-9.1%
	Lowell NHP	481,536	-5.1%	61,613	-3.7%
	Minute Man NHP	1,017,326	0.2%	127,166	0.2%
	New Bedford Whaling NHP	143,427	-23.3%	6,210	-23.7%
	Salem Maritime NHS	339,238	12.9%	16,131	6.0%
	Saugus Iron Works NHS	8,150	-23.5%	1,019	-23.5%
	Springfield Armory NHS	20,979	4.4%	3,497	4.3%
	Subtotal Massachusetts	10,003,220	3.7%	1,198,480	2.3%
Michigan	Isle Royale NP	26,410	2.4%	111,304	6.4%
	Keweenaw NHP	20,535	0.6%	3,094	-4.5%
	Pictured Rocks NL ³	858,715	5.3%	352,197	2.6%
	River Raisin NBP	226,354	-5.9%	37,726	-5.9%
	Sleeping Bear Dunes NL	1,570,001	-4.5%	725,551	-0.2%
	Subtotal Michigan	2,702,015	-1.6%	1,229,872	0.9%
Minnesota	Grand Portage NM	94,985	0.9%	17,337	1.9%
	Mississippi NRRRA	374,682	-10.2%	53,154	-14.2%
	Pipestone NM	77,508	5.8%	16,147	5.8%
	Saint Croix NSR	319,133	-11.9%	240,409	-14.6%

*Total of parks by state may not equal state subtotals due to rounding in underlying calculations

**Percents will not add to state subtotals because each row is a separate percent change by park

Table 6 (continued). 2019 Recreation Visits / Visitor Days and Percent Change from 2018 by State and U.S. Territory

State	Park	Recreation Visits*	Percent Change**	Recreation Visitor Days*	Percent Change**
Minnesota (continued)	Voyageurs NP ⁴	232,974	-2.8%	98,407	-1.0%
	Subtotal Minnesota	1,099,282	-7.3%	425,454	-10.5%
Mississippi	Gulf Islands NS ³	1,236,371	16.2%	517,051	63.6%
	Natchez NHP	182,123	-22.4%	34,321	-19.0%
	Natchez Trace PKWY	5,036,831	-1.0%	1,689,863	-1.1%
	Vicksburg NMP	576,456	21.5%	106,741	22.0%
	Subtotal Mississippi	7,031,781	2.5%	2,347,976	9.0%
Missouri	Gateway Arch NP	2,055,309	1.9%	685,103	1.9%
	George Washington Carver NM	49,553	11.6%	5,368	11.6%
	Harry S Truman NHS	30,746	-6.5%	1,942	-5.2%
	Ozark NSR	1,221,489	-3.4%	277,660	-1.4%
	Ulysses S. Grant NHS	39,449	-9.5%	4,931	-9.5%
	Wilson's Creek NB	232,838	5.7%	38,806	5.7%
	Subtotal Missouri	3,629,384	0.2%	1,013,810	1.1%
Montana	Big Hole NB ^{3,5}	45,861	-19.5%	5,494	-22.7%
	Bighorn Canyon NRA ^{3,5}	134,816	6.0%	46,181	13.6%
	Glacier NP	3,049,839	2.9%	2,831,657	5.5%
	Grant-Kohrs Ranch NHS	25,043	-6.1%	2,567	-6.1%
	Little Bighorn Battlefield NM	241,304	-11.5%	20,109	-11.5%
	Yellowstone NP ⁴	2,050,346	-2.3%	2,061,817	-2.3%
	Subtotal Montana	5,547,209	0.0%	4,967,825	2.0%
Nebraska	Agate Fossil Beds NM	16,657	2.6%	3,142	-3.0%
	Homestead NM of America	61,636	-9.5%	8,683	-8.6%

*Total of parks by state may not equal state subtotals due to rounding in underlying calculations

**Percents will not add to state subtotals because each row is a separate percent change by park

Table 6 (continued). 2019 Recreation Visits / Visitor Days and Percent Change from 2018 by State and U.S. Territory

State	Park	Recreation Visits*	Percent Change**	Recreation Visitor Days*	Percent Change**
Nebraska (continued)	Niobrara NSR ⁵	60,812	-1.3%	38,765	-2.2%
	Scotts Bluff NM ⁴	166,007	16.9%	26,285	16.9%
	Subtotal Nebraska	305,112	5.9%	76,874	2.7%
Nevada	Great Basin NP	131,802	-13.9%	106,896	-21.6%
	Lake Mead NRA	5,624,288	-1.1%	3,779,943	4.7%
	Subtotal Nevada	5,756,090	-1.4%	3,886,839	3.8%
New Hampshire	Saint-Gaudens NHP ⁶	31,759	-9.8%	5,141	-10.4%
	Subtotal New Hampshire	31,759	-9.8%	5,141	-10.4%
New Jersey	Delaware Water Gap NRA	2,396,156	3.5%	849,325	2.6%
	Gateway NRA	1,602,271	-5.9%	481,348	-6.0%
	Morristown NHP	271,330	-2.9%	65,975	-2.5%
	Paterson Great Falls NHP ³	276,985	92.9%	46,042	33.9%
	Thomas Edison NHP	42,224	-10.7%	4,459	-18.5%
	Subtotal New Jersey	4,588,966	2.2%	1,447,148	-0.0%
New Mexico	Aztec Ruins NM	63,777	16.1%	7,972	16.1%
	Bandelier NM	200,741	1.2%	77,363	-3.7%
	Capulin Volcano NM	81,617	21.1%	9,468	22.5%
	Carlsbad Caverns NP	440,691	-5.4%	140,659	-6.0%
	Chaco Culture NHP	47,342	-18.1%	50,079	-11.8%
	El Malpais NM	158,924	3.0%	52,975	3.0%
	El Morro NM	68,867	5.2%	18,247	2.8%
	Fort Union NM	11,063	1.9%	1,088	1.9%
	Gila Cliff Dwellings NM	66,614	-15.8%	8,327	-15.8%

*Total of parks by state may not equal state subtotals due to rounding in underlying calculations

**Percents will not add to state subtotals because each row is a separate percent change by park

Table 6 (continued). 2019 Recreation Visits / Visitor Days and Percent Change from 2018 by State and U.S. Territory

State	Park	Recreation Visits*	Percent Change**	Recreation Visitor Days*	Percent Change**
New Mexico (continued)	Manhattan Project NHP	21,790	53.9%	1,625	62.4%
	Pecos NHP	43,834	12.0%	4,665	15.2%
	Petroglyph NM	293,957	9.4%	48,993	9.4%
	Salinas Pueblo Missions NM	31,672	-8.5%	5,236	-5.8%
	White Sands NP ⁶	608,785	1.0%	126,825	0.5%
	Subtotal New Mexico	2,139,674	1.2%	553,521	-1.7%
New York	African Burial Ground NM	47,427	5.3%	2,814	3.8%
	Castle Clinton NM	4,361,034	-3.8%	182,558	-3.9%
	Eleanor Roosevelt NHS	47,630	-12.8%	5,954	-12.8%
	Federal Hall NMEM	264,849	14.8%	15,998	9.7%
	Fire Island NS	391,311	28.0%	127,359	43.7%
	Fort Stanwix NM	97,412	7.6%	12,177	7.6%
	Gateway NRA	7,803,348	3.5%	1,660,458	2.5%
	General Grant NMEM	113,852	55.2%	5,015	31.6%
	Governors Island NM	590,993	0.2%	98,499	0.2%
	Hamilton Grange NMEM	71,247	7.6%	4,609	12.8%
	Home of Franklin D. Roosevelt NHS	147,109	-4.5%	19,621	-6.1%
	Martin Van Buren NHS	20,623	10.6%	1,739	10.8%
	Sagamore Hill NHS	36,738	-8.1%	7,654	-8.1%
	Saint Paul's Church NHS	18,537	-14.3%	2,108	-11.8%
	Saratoga NHP	145,118	7.1%	35,754	7.7%
	Statue of Liberty NM	4,240,461	-2.2%	1,590,173	-2.2%
	Stonewall NM	2,088,929	308.6%	170,549	302.8%

*Total of parks by state may not equal state subtotals due to rounding in underlying calculations

**Percents will not add to state subtotals because each row is a separate percent change by park

Table 6 (continued). 2019 Recreation Visits / Visitor Days and Percent Change from 2018 by State and U.S. Territory

State	Park	Recreation Visits*	Percent Change**	Recreation Visitor Days*	Percent Change**
New York (continued)	Theodore Roosevelt Birthplace NHS ^{3,5}	25,978	12.2%	2,306	10.7%
	Theodore Roosevelt Inaugural NHS	26,994	-1.9%	4,240	-6.8%
	Upper Delaware S&RR ^{3,5}	107,769	-2.5%	33,470	-12.8%
	Vanderbilt Mansion NHS	326,822	-4.1%	34,282	-4.4%
	Women's Rights NHP	39,064	-8.7%	3,470	-4.4%
	Subtotal New York	21,013,245	8.9%	4,020,806	4.2%
North Carolina	Blue Ridge PKWY	9,285,170	1.9%	4,843,314	2.5%
	Cape Hatteras NS ⁴	2,606,632	0.6%	972,053	2.8%
	Cape Lookout NS ^{3,4}	455,526	11.5%	150,107	1.3%
	Carl Sandburg Home NHS	78,144	8.5%	9,996	7.9%
	Fort Raleigh NHS	248,139	-5.0%	30,097	-4.4%
	Great Smoky Mountains NP	5,521,007	9.9%	3,344,131	9.0%
	Guilford Courthouse NMP	223,900	-5.1%	12,148	-1.3%
	Moores Creek NB	77,006	31.6%	4,404	44.1%
	Wright Brothers NMEN	400,135	10.9%	33,345	10.9%
	Subtotal North Carolina	18,895,659	4.3%	9,399,595	4.7%
North Dakota	Fort Union Trading Post NHS	12,967	-4.3%	1,304	-6.8%
	Knife River Indian Villages NHS	10,354	-11.4%	1,246	-8.8%
	Theodore Roosevelt NP	691,658	-7.7%	221,494	-1.5%
	Subtotal North Dakota	714,979	-7.7%	224,043	-1.6%
Ohio	Charles Young Buffalo Soldiers NM	14,106	-55.1%	2,322	-39.4%
	Cuyahoga Valley NP	2,237,997	6.8%	546,270	4.6%

*Total of parks by state may not equal state subtotals due to rounding in underlying calculations

**Percents will not add to state subtotals because each row is a separate percent change by park

Table 6 (continued). 2019 Recreation Visits / Visitor Days and Percent Change from 2018 by State and U.S. Territory

State	Park	Recreation Visits*	Percent Change**	Recreation Visitor Days*	Percent Change**
Ohio (continued)	Dayton Aviation Heritage NHP	94,709	1.2%	10,852	-1.5%
	First Ladies NHS	10,913	-4.7%	1,819	-4.7%
	Hopewell Culture NHP	60,338	5.2%	10,056	5.2%
	James A. Garfield NHS	41,305	1.2%	6,884	1.2%
	Perry's Victory & Intl. Peace MEM	121,325	-19.4%	9,921	-15.5%
	William Howard Taft NHS	32,396	7.3%	2,700	7.3%
	Subtotal Ohio	2,613,089	4.0%	590,824	3.7%
Oklahoma	Chickasaw NRA	1,422,612	-3.7%	513,792	-9.5%
	Washita Battlefield NHS ⁴	9,119	-32.1%	760	-32.1%
	Subtotal Oklahoma	1,431,731	-4.0%	514,552	-9.6%
Oregon	Crater Lake NP	704,512	-2.2%	284,315	-16.9%
	John Day Fossil Beds NM	197,091	-3.7%	19,052	-3.7%
	Lewis & Clark NHP	270,993	-5.4%	33,432	-6.6%
	Oregon Caves NM & PRES ⁴	65,006	-3.6%	16,251	-33.1%
	Subtotal Oregon	1,237,602	-3.2%	353,050	-16.3%
Pennsylvania	Allegheny Portage Railroad NHS	189,189	0.1%	24,282	0.6%
	Delaware Water Gap NRA	978,710	3.5%	346,907	2.6%
	Edgar Allan Poe NHS	15,527	-4.8%	1,294	-4.8%
	Eisenhower NHS	47,277	12.5%	6,304	12.5%
	Flight 93 NMEM ³	411,226	7.8%	59,970	7.8%
	Fort Necessity NB	312,104	11.1%	37,015	10.8%
	Friendship Hill NHS	34,159	-18.0%	6,722	-15.7%
	Gettysburg NMP	925,117	-2.6%	343,226	-1.3%

*Total of parks by state may not equal state subtotals due to rounding in underlying calculations

**Percents will not add to state subtotals because each row is a separate percent change by park

Table 6 (continued). 2019 Recreation Visits / Visitor Days and Percent Change from 2018 by State and U.S. Territory

State	Park	Recreation Visits*	Percent Change**	Recreation Visitor Days*	Percent Change**
Pennsylvania (continued)	Hopewell Furnace NHS	49,861	7.4%	4,986	7.4%
	Independence NHP	4,532,459	-1.0%	571,109	-0.7%
	Johnstown Flood NMEM	183,143	25.2%	16,135	28.1%
	Steamtown NHS	105,403	7.6%	12,801	6.6%
	Thaddeus Kosciuszko NMEM	1,921	-7.5%	40	-7.7%
	Upper Delaware S&RR ^{3,5}	107,769	-2.5%	33,470	-12.8%
	Valley Forge NHP ³	2,259,944	20.1%	376,657	20.1%
	Subtotal Pennsylvania	10,153,809	4.6%	1,840,918	4.0%
Puerto Rico	San Juan NHS	1,197,345	31.5%	195,717	33.0%
	Subtotal Puerto Rico	1,197,345	31.5%	195,717	33.0%
Rhode Island	Roger Williams NMEM	59,419	-2.1%	4,266	-2.3%
	Subtotal Rhode Island	59,419	-2.1%	4,266	-2.3%
South Carolina	Charles Pinckney NHS	35,495	3.3%	5,916	3.3%
	Congaree NP	159,445	9.3%	55,913	7.8%
	Cowpens NB	223,413	18.0%	15,946	2.7%
	Fort Sumter and Fort Moultrie NHP ⁶	877,894	2.1%	177,030	2.5%
	Kings Mountain NMP	262,031	-8.9%	18,836	-13.9%
	Ninety Six NHS	97,295	1.8%	10,135	1.8%
	Subtotal South Carolina	1,655,573	2.7%	283,776	2.2%
South Dakota	Badlands NP ³	970,998	-3.8%	349,399	-2.3%
	Jewel Cave NM ⁴	123,489	-13.3%	26,241	-19.2%
	Minuteman Missile NHS ³	125,776	-9.7%	8,128	23.2%
	Missouri NRR	129,280	0.5%	10,773	0.5%

*Total of parks by state may not equal state subtotals due to rounding in underlying calculations

**Percents will not add to state subtotals because each row is a separate percent change by park

Table 6 (continued). 2019 Recreation Visits / Visitor Days and Percent Change from 2018 by State and U.S. Territory

State	Park	Recreation Visits*	Percent Change**	Recreation Visitor Days*	Percent Change**
South Dakota (continued)	Mount Rushmore NMEM	1,963,540	-15.0%	215,443	-15.0%
	Wind Cave NP ⁴	615,350	-6.3%	144,615	-12.6%
	Subtotal South Dakota	3,928,433	-10.5%	754,599	-8.7%
Tennessee	Andrew Johnson NHS ³	51,189	1.0%	2,350	4.5%
	Big South Fork NRRRA	442,791	-1.4%	259,263	-2.7%
	Chickamauga & Chattanooga NMP	488,579	3.3%	78,178	1.4%
	Fort Donelson NB	254,431	50.6%	14,127	50.4%
	Great Smoky Mountains NP	7,026,734	9.9%	4,256,167	9.0%
	Manhattan Project NHP	30,123	-4.8%	2,450	-1.1%
	Natchez Trace PKWY	818,486	-1.0%	274,603	-1.1%
	Obed W&SR	221,301	1.7%	78,718	0.9%
	Shiloh NMP	360,989	-4.0%	43,452	-4.5%
	Stones River NB	284,516	6.8%	33,153	-11.6%
	Subtotal Tennessee	9,979,139	7.8%	5,042,461	7.3%
Texas	Alibates Flint Quarries NM	8,847	19.3%	1,843	19.3%
	Amistad NRA ⁴	1,267,900	14.0%	773,710	14.2%
	Big Bend NP	463,832	5.4%	874,696	1.4%
	Big Thicket NPRES ³	255,926	15.5%	68,880	3.1%
	Chamizal NMEM	38,228	-42.5%	4,157	-43.2%
	Fort Davis NHS ⁴	51,995	5.0%	8,666	0.2%
	Guadalupe Mountains NP ^{3,5}	188,833	9.6%	36,766	-13.0%
	Lake Meredith NRA	1,328,340	20.1%	330,637	23.1%
	Lyndon B. Johnson NHP	111,972	-7.8%	15,813	-5.8%

*Total of parks by state may not equal state subtotals due to rounding in underlying calculations

**Percents will not add to state subtotals because each row is a separate percent change by park

Table 6 (continued). 2019 Recreation Visits / Visitor Days and Percent Change from 2018 by State and U.S. Territory

State	Park	Recreation Visits*	Percent Change**	Recreation Visitor Days*	Percent Change**
Texas (continued)	Padre Island NS	576,299	-6.4%	343,995	-4.3%
	Palo Alto Battlefield NHP	149,733	81.5%	19,391	59.5%
	Rio Grande W&SR	324	-1.8%	3,198	-30.4%
	San Antonio Missions NHP	1,281,121	6.0%	143,441	9.9%
	Waco Mammoth NM	111,331	4.1%	12,095	8.1%
	Subtotal Texas	5,834,681	9.9%	2,637,288	6.8%
Utah	Arches NP ⁴	1,659,702	-0.2%	492,735	0.1%
	Bryce Canyon NP ⁴	2,594,904	-3.2%	1,058,807	-8.4%
	Canyonlands NP ^{3,5}	733,996	-0.7%	429,396	-2.8%
	Capitol Reef NP	1,226,519	-0.1%	159,131	-0.5%
	Cedar Breaks NM	579,861	-10.0%	102,691	-9.5%
	Dinosaur NM	77,732	-1.8%	39,765	5.1%
	Glen Canyon NRA	3,489,530	4.0%	3,257,799	-2.0%
	Golden Spike NHP ^{3,6}	108,154	79.9%	21,859	80.1%
	Hovenweep NM	19,824	-12.8%	5,766	-10.9%
	Natural Bridges NM	88,090	-14.6%	42,676	-14.0%
	Rainbow Bridge NM	115,108	3.8%	14,389	3.8%
	Timpanogos Cave NM	103,512	-14.7%	17,016	-20.9%
	Zion NP ^{3,5}	4,488,268	3.9%	2,392,962	-4.0%
	Subtotal Utah	15,285,200	1.1%	8,034,992	-3.4%
Vermont	Marsh-Billings-Rockefeller NHP	45,979	-28.0%	7,663	-28.0%
	Subtotal Vermont	45,979	-28.0%	7,663	-28.0%
Virgin Islands	Buck Island Reef NM ⁴	37,085	18.1%	18,339	13.6%
	Christiansted NHS	103,594	-3.6%	5,006	-4.5%

*Total of parks by state may not equal state subtotals due to rounding in underlying calculations

**Percents will not add to state subtotals because each row is a separate percent change by park

Table 6 (continued). 2019 Recreation Visits / Visitor Days and Percent Change from 2018 by State and U.S. Territory

State	Park	Recreation Visits*	Percent Change**	Recreation Visitor Days*	Percent Change**
Virgin Islands (continued)	Salt River Bay NHP & Ecological Pres	5,215	6.8%	970	6.4%
	Virgin Islands NP ⁴	133,398	18.8%	68,366	18.8%
	Subtotal Virgin Islands	279,292	9.1%	92,681	16.1%
Virginia	Appomattox Court House NHP	102,397	-0.6%	12,394	-0.6%
	Arlington House The R.E. Lee MEM ⁴	0	-100.0%	0	-100.0%
	Assateague Island NS	1,570,840	9.7%	1,115,311	10.2%
	Blue Ridge PKWY	5,690,912	1.9%	2,968,483	2.5%
	Booker T. Washington NM	24,640	8.4%	4,024	-1.7%
	Colonial NHP	3,327,268	1.0%	293,602	2.4%
	Cumberland Gap ⁵ NHP	49,320	3.0%	8,638	12.2%
	Fredericksburg & Spotsylvania NMP	906,800	-2.1%	35,540	2.0%
	George Washington Birthplace NM	139,666	25.8%	36,032	25.8%
	George Washington MEM PKWY	7,487,265	2.7%	677,688	3.6%
	LBJ Memorial Grove on the Potomac	244,246	-6.5%	10,177	-6.5%
	Maggie L. Walker NHS	9,602	-12.4%	1,200	-12.4%
	Manassas NBP	510,427	-5.8%	31,902	-5.8%
	Petersburg NB	235,691	15.4%	21,081	20.3%
	Prince William Forest Park	339,693	8.3%	270,201	-2.4%
	Richmond NBP	197,242	-1.1%	29,545	-8.3%
	Shenandoah NP	1,425,507	12.7%	884,881	3.0%
	Theodore Roosevelt Island	151,500	0.0%	22,725	0.0%

*Total of parks by state may not equal state subtotals due to rounding in underlying calculations

**Percents will not add to state subtotals because each row is a separate percent change by park

Table 6 (continued). 2019 Recreation Visits / Visitor Days and Percent Change from 2018 by State and U.S. Territory

State	Park	Recreation Visits*	Percent Change**	Recreation Visitor Days*	Percent Change**
Virginia (continued)	Wolf Trap NP for the Performing Arts	402,580	10.1%	134,193	10.1%
	Subtotal Virginia	22,815,596	2.9%	6,557,618	3.8%
Washington	Fort Vancouver NHS ^{3,5}	1,018,214	-7.3%	91,481	-1.7%
	Klondike Gold Rush NHP Seattle ²	109,799	32.9%	16,012	32.9%
	Lake Chelan NRA	38,785	-0.1%	43,969	8.3%
	Lake Roosevelt NRA	1,358,818	6.4%	324,803	-1.7%
	Manhattan Project NHP	27,957	17.8%	5,434	16.5%
	Minidoka NHS	7,372	24.9%	1,229	24.9%
	Mount Rainier NP	1,501,621	-1.1%	1,555,057	5.3%
	North Cascades NP	38,208	27.0%	56,051	9.1%
	Olympic NP	3,245,806	4.6%	1,408,254	-3.8%
	Ross Lake NRA	1,088,528	22.0%	236,144	-12.6%
	San Juan Island NHP	292,507	14.7%	39,033	16.5%
	Whitman Mission NHS	48,481	-1.6%	4,040	-1.6%
	Subtotal Washington	8,776,096	4.8%	3,781,507	-0.0%
West Virginia	Bluestone NSR	37,663	20.3%	7,847	20.3%
	Gauley River NRA	119,282	22.0%	31,654	8.7%
	Harpers Ferry NHP	299,577	12.7%	99,859	12.7%
	New River Gorge NR	1,195,721	-3.0%	217,982	2.6%
	Subtotal West Virginia	1,652,243	1.5%	357,341	6.1%
Wisconsin	Apostle Islands NL	240,613	-4.9%	66,010	-4.2%
	Saint Croix NSR	319,133	-11.9%	240,409	-14.6%
	Subtotal Wisconsin	559,746	-9.0%	306,419	-12.6%

*Total of parks by state may not equal state subtotals due to rounding in underlying calculations

**Percents will not add to state subtotals because each row is a separate percent change by park

Table 6 (continued). 2019 Recreation Visits / Visitor Days and Percent Change from 2018 by State and U.S. Territory

State	Park	Recreation Visits*	Percent Change**	Recreation Visitor Days*	Percent Change**
Wyoming	Bighorn Canyon NRA ^{3,5}	114,843	6.0%	39,340	13.6%
	Devils Tower NM ³	450,785	-3.7%	107,416	-8.0%
	Fort Laramie NHS	42,892	-18.2%	5,361	-18.2%
	Fossil Butte NM	20,554	-3.7%	2,351	-2.4%
	Grand Teton NP	3,405,614	-2.5%	1,766,900	10.6%
	John D. Rockefeller, Jr. MEM PKWY	1,426,666	-5.2%	141,663	-9.4%
	Yellowstone NP ⁴	1,969,940	-2.3%	4,633,968	-6.1%
	Subtotal Wyoming	7,431,294	-3.0%	6,696,999	-2.2%

*Total of parks by state may not equal state subtotals due to rounding in underlying calculations

**Percents will not add to state subtotals because each row is a separate percent change by park

Endnotes

Endnotes are defined with fixed numeric identifiers that apply to Tables 1-6

¹**New units not reporting visitation**

- Tule Lake National Monument (renamed from World War II Valor in the Pacific National Monument and split from Pearl Harbor National Memorial)

²**Combined areas reporting separately**

- Data for the following areas *Klondike Gold Rush NHP-Alaska* and *Klondike Gold Rush NHP-Seattle* are reported separately but are classified as *Klondike Gold Rush NHP*
- The following area is combined with *National Capital Parks Central* and breakdown is not available: *Constitution Gardens*

³**Changes in counting procedures** (data for the following areas require special adjustment to be comparable with earlier data):

- Andrew Johnson NHS (Removed bus adjustment from both counters because buses do not cross counters; changed from persons per bus multiplier to manual count of bus passengers entering park)
- Badlands NP (Changed from manual count to fixed estimate for non-recreation vehicles at Interior entrance; added bus and non-recreation vehicle adjustments to Interior traffic count)
- Big Cypress NPRES (Removed counts at dump station; changed from manual count to fixed estimate for overnights at Mitchell Landing Campground; changed from estimate using traffic count to a direct count of permitted visits and overnights at Pinecrest)
- Big Hole NB (Updated type of traffic counter and added correction for entry / exit counts)
- Big Thicket NPRES (Added estimates for Four Oaks and Edgewater day use areas)
- Bighorn Canyon NRA (All campgrounds changed from NPS operated May through October to concession operated; November through April remains as NPS operated)
- Biscayne NP (Changed from manual counts of visits at Visitor Center area to estimate using traffic counter; removed glass bottom boat tours)
- Canyonlands NP (Updated traffic technology at Maze; changed from fixed estimate to estimate from permits for cyclists at White Rim; changed from estimate to direct count of overnights at Maze from permit system; changed from fixed estimate of overnight stays at Willow Flat campground to count of sites occupied times a persons per site multiplier)
- Cape Lookout NS (Streamlined ferry visit reporting; changed from regression estimate of private boats to fixed estimate by month; removed Maritime Museum, Keepers Quarters VC, Harkers Island picnic area, manual count of private boats; added CUA tour groups, Portsmouth CUA visits; updated non-recreation visits; changed beach cabin overnights from

concession operated lodging to NPS miscellaneous overnights; updated persons per boat multiplier November through March)

- Channel Islands NP (Changed from manual count of boats to estimates using anchorage counts; updated non-recreation persons per boat multiplier for overnight boats; added non-recreation overnight stays for CSUCI Research Station)
- Devils Tower NM (Changed from estimate of overnights using a count of sites occupied times a multiplier to direct count of overnight stays)
- Dry Tortugas NP (Removed ‘other recreation visits’ from recreation visits and hours; changed day use length of stay from 12 to 8 hours)
- Everglades NP (Updated method for pedestrians and cyclists at Shark Valley; changed traffic count technology at Main Entrance / Homestead, Shark Valley and Gulf Coast; updated non-reportable vehicle adjustments; added estimate of water access visits from pass sales; added visits at East Everglades; changed from NPS operated to concession operated camping for group overnight stays; updated persons per boat and trailer adjustment multipliers; updated overnight length of stay multiplier)
- Flight 93 NMEM (Updated persons per vehicle multiplier)
- Florissant Fossil Beds NM (Removed division by two on Visitor Center traffic count)
- Fort Vancouver NHS (Added visits and hours for Land Bridge, augmented reality game participants and non-recreation tenants in NPS buildings)
- Golden Spike NHP (Added in otherwise uncounted visitation to special events)
- Greenbelt Park (Changed from sites occupied times multiplier to direct count of overnight stays for tent and RV)
- Guadalupe Mountains NP (Updated persons per vehicle multipliers and non-reportable vehicles at Dog Canyon, Frijole Ranch, and McKittrick Canyon; added non-recreation visits and hours at McKittrick Canyon; added visits and hours at Salt Basin Dunes)
- Gulf Islands NS (Changed from manual count of water-based use to estimate from land-based use)
- Horseshoe Bend NMP (Updated non-reportable vehicles; split group visits into school, military staff ride and other; removed non-recreation visits and hours)
- Joshua Tree NP (Updated persons per vehicle multipliers for North, West, Cottonwood and Black Rock entrances)
- Lassen Volcanic NP (Changed Warner Valley overnight stays from NPS overnights to concession campground overnights)
- Little River Canyon NPRES (Added visits for backcountry road locations; updated traffic counter technology; removed division by four on Canyon Mouth Park counter; added division by two on Little Falls and High Rock counters; updated non-reportable vehicles for Canyon Rim, Canyon Mouth, Main Falls, Little Falls, and High Rock)

- Mammoth Cave NP (Added counts for Echo River Springs Trail; removed counts for canoe liveries; added fixed estimate of canoeists/kayakers at Houchin Ferry; updated canoe/kayak estimate at Nolin Tailwaters area; added equestrian visits from Double J Stables; changed from sites occupied times multiplier to direct count of overnight stays at NPS operated campgrounds; split backcountry overnights into river and other; updated non-recreation visits on Highway 70)
- Minuteman Missile NHS (Changed from manual count of visits to estimate from traffic counters at Delta-01 and Delta-09 sites; updated adjustments for duplicate reporting; updated visitor hours)
- Monocacy NB (Updated persons per vehicle multiplier; updated traffic technology; updated duplicate reporting adjustments; changed from buses times multiplier to direct count of bus visits; added counts and hours for Thomas Farm, Best Farm, Gambrill Trail, and Monocacy River access; added estimate of overflow parking at Worthington Farm; added non-recreation visits and hours)
- Paterson Great Falls NHP (Changed from manual count to estimate of buses in park; added otherwise uncounted visitation from several parking areas)
- Pictured Rocks NL (Added recreation visits and hours for kayakers and non-recreation visits and hours for guides)
- Theodore Roosevelt Birthplace NHS (Removed ‘outside event visits’ from non-recreation visits and hours)
- Upper Delaware S&RR (Updated method for Hancock access count; added Roebling Bridge Toll House hours to recreation visitor hours; added non-rec visits and hours on Roebling Bridge/Delaware Aqueduct; updated traffic technology at Darbytown)
- Valley Forge NHP (Updated method for Visitor Center count)
- Whiskeytown NRA (Changed from sites occupied times a multiplier to direct count of overnight stays at Brandy Creek RV sites; added NPS tent overnight stays for primitive campgrounds)
- Zion NP (Updated persons per vehicle multipliers; changed from estimate of bus visitors using a multiplier to a direct count of bus visitors)

⁴Partial or temporary closing (data for the following areas require special adjustments to be comparable with earlier data):

- Amistad NRA (San Pedro closed July through November due to low/no water)
- Arches NP (Devils Garden Campground closed in February due to water leak in campground)
- Arlington House The R.E. Lee MEM (Park closed until spring 2020 for renovations)
- Bryce Canyon NP (Sunset Campground closed for renovation; winter snows closed backcountry to camping into spring)

- Buck Island Reef NM (Jolly Roger and Llewelyn charters out of the water September through December)
- Cape Hatteras NS (Ocracoke Island closed September through November due to damage from Hurricane Dorian)
- Cape Lookout NS (North Core / Long Point Cabins / Portsmouth Village and other areas closed most of autumn due to damage from Hurricane Dorian)
- Chiricahua NM (Half of individual campsites were closed in July, August and September due to danger of flash flooding)
- Death Valley NP (Scotty's Castle and Grapevine Canyon road remained closed from flood damage in 2015)
- Fort Davis NHS (Remodel closed some areas of the park throughout the year)
- Fort Matanzas NM (Beach ramp and ferry operations closed September through end of year due to damage from Hurricane Dorian)
- Greenbelt Park (Campground, Ranger Station and part of Park Central Road closed from July 15 through spring 2020 for construction project)
- Jewel Cave NM (Cave closed for construction project January through March and October through December)
- Kalaupapa NHP (Pali Trail closed indefinitely due to a landslide – no access to park by trail)
- Mammoth Cave NP (Green River Ferry closed for maintenance August through the end of the year)
- Mesa Verde NP (Rockfall on road and snowstorms closed park for 17 days in February)
- Oregon Caves NM & PRES (Chateau closed for renovation – no overnight stays)
- Pearl Harbor NMEM (Arizona Memorial closed May 6, 2018 through August 31, 2019 – reopened September 1, 2019)
- Point Reyes NS (Stewarts Horse Camp closed most of year)
- Sand Creek Massacre NHS (Monument Hill area closed for construction February through May)
- Santa Monica Mountains NRA (Several areas of park closed for part or all of 2019 due to damage from Woolsey Fire)
- Scotts Bluff NM (Visitor Center and Museum closed most of year for construction / renovation)
- Sequoia NP (Bearpaw High Sierra Camp closed for 2019 due to snow damage)
- Tonto NM (Park closed half of June, all of July and most of August due to Woodbury Fire)
- Virgin Islands NP (Lingering closures from 2017 hurricanes)
- Voyageurs NP (Visitor Centers closed off and on throughout the year due to staffing issues)

- War in the Pacific NHP (Gaan Point unit under construction July through end of year)
- Washington Monument (The Monument closed in August 2016 for repairs and re-opened September 19, 2019)
- Washita Battlefield NHS (Construction at Overlook and Trailhead parking areas March 15 through October 18)
- Whiskeytown NRA (Some areas remain closed after the 2018 Carr Fire; some camping areas reopened late summer 2019; no backcountry overnights for 2019)
- Wind Cave NP (Elevator failed in June – no cave tours for the rest of the year)
- Yellowstone NP (Fishing Bridge RV Park closed for improvements to area)
- Yosemite NP (Valley campgrounds closed in March from storm damage)

⁵Error in Previous Year (Data for the following areas requires special adjustment to be comparable with earlier data):

- Big Hole NB (After-hours visits in January and November were updated to match values in count procedures; estimates using traffic count at main entrance were changed from May through September to May through October to match count procedures – it appears these errors have been in place since 1993)
- Bighorn Canyon NRA (From 2010 through 2018, tent and RV sites occupied were incorrectly multiplied by the persons per vehicle multiplier of 3.0 instead of the listed persons per site multiplier of 2.7)
- Canyonlands NP (Some bus passenger data in the past has been skewed down because passengers using their passes have not been counted)
- Cumberland Gap NHP (Visitor hours for Daniel Boone Parking Area were missing from recreation visitor hours)
- Denali NP & PRES (Talkeetna Ranger Station counter was not operating correctly in summer 2017 resulting in a doubling of summer 2017 data at that location)
- Everglades NP (Some data were missing or delayed in 2018 which resulted in under-reporting for the year)
- Florissant Fossil Beds NM (Visitation estimates for November and December 2018 are approximately half of what they should have been due to a change in the way traffic was measured at the entrance)
- Fort Caroline NMEM (Hiker / jogger / cyclists estimates were inadvertently inflated in previous years)
- Fort Vancouver NHS (Some parking area visitor hours were missing from recreation visitor hours – this error has been in place since 2014)
- Guadalupe Mountains NP (McKittrick Canyon traffic should have been divided by two for entry and exit; unclear how long this error has existed, perhaps since 1992)

- Haleakala NP (From 2007 through 2018, miscellaneous fee visits were incorrectly added to recreation visits-these visits are already captured in the estimate from the traffic counter; from 2000 through 2018, non-recreation visits incorrectly had an estimate of non-rec visits for Kipahulu which should have been removed in 2000; some day use hours for tour bus visitors were incorrectly added into recreation visitor hours multiple times)
- Horseshoe Bend NMP (From 1994 through 2018, recreation traffic was not subtracted from total traffic count on Highway 49 resulting in inflated values for non-recreation visits and hours)
- Lassen Volcanic NP (From 2008 through 2018, non-reportable vehicles at southwest entrance were inadvertently omitted from calculations)
- Niobrara NSR (Some data were missing or delayed in 2018 which resulted in under-reporting for the year)
- Russell Cave NM (Recreation visits were calculated incorrectly by subtracting off non-reportable vehicles after applying persons per vehicle multiplier instead of before – this inflated recreation visits and visitor hours slightly in 2017 and 2018)
- Theodore Roosevelt Birthplace NHS (The field ‘outside event visits’ has been used for many years to collect data on off-site visits and these have been incorrectly added into non-recreation visits and hours – it is unclear how long this error has been occurring because the field was originally intended to capture on-site events conducted outside of the NPS mission)
- Upper Delaware S&RR (Barryville fishermen in May should be 300 instead of 3,000; general non-recreation visits for April, May and November were incorrect)
- Whiskeytown NRA (NPS tent overnight stays have been inadvertently reported as backcountry overnight stays for an unknown amount of time)
- Zion NP (Bus passengers had incorrect length of stay multipliers from 2013 through 2018; persons per bus multipliers were switched between south entrance and east entrance / Kolob Canyons from 2013 through 2018)

‘Change in Unit Designation

- Fort Sumter and Fort Moultrie National Historical Park redesignated from Fort Sumter National Monument
- Golden Spike National Historical Park redesignated from Golden Spike National Historic Site
- Honouliuli National Historic Site redesignated from Honouliuli National Monument
- Indiana Dunes National Park redesignated from Indiana Dunes National Lakeshore
- Ocmulgee Mounds National Historical Park redesignated from Ocmulgee National Monument
- World War II Valor in the Pacific National Monument split into Pearl Harbor National Memorial and Tule Lake National Monument; this is a redesignation for Pearl Harbor

National Memorial and a renaming for both parks. Previous data collected for World War II Valor in the Pacific NM was solely for Pearl Harbor and is legacy data for that park alone.

- Reconstruction Era National Historical Park redesignated from Reconstruction Era National Monument
- Saint-Gaudens National Historical Park redesignated from Saint-Gaudens National Historic Site
- White Sands National Park redesignated from White Sands National Monument

Definitions

AFFILIATED AREA: An area administered in connection with the National Park Service (NPS), which uses NPS assistance but is neither federally owned nor directly administered by the NPS.

BACKCOUNTRY: One or more primitive or wilderness areas which are reached primarily by hiking, boating or horseback. This does not include developed campgrounds solely because they happen to be located on an island (e.g. at Isle Royale NP).

CAMPGROUND: An area of land designated and developed for use as a camp.

CLASSIFICATION – Designated names for areas administered by the NPS may be found in the publication, *The National Parks: Index 2012-2016*.

CONCESSIONER: A private company or an individual granted the privilege of providing facilities and services considered necessary by the NPS for accommodating visitors.

CONCESSIONER CAMPGROUND: An element of a concessioner operation involving services for overnight camping such as RV parks, tent campgrounds and trailer courts where trailers are not provided by the concessioner.

CONCESSIONER LODGING: An element of a concessioner operation involving facilities for overnight lodging such as hotels, motels, cabins, cottages, trailer villages and trailer courts where trailers are available for rent by visitors.

MISCELLANEOUS OVERNIGHT STAY: Any overnight stay not otherwise defined such as sleeping aboard boats, camping in organized group campsites, and/or any overnight stays not included in other categories. This excludes overnight stays on private inholdings, which are non-reportable.

MIXED AREA PARK: See **POPULATION CENTERS**.

NATIONAL PARK SERVICE (NPS) : A Department of the Interior (DOI) bureau which administers approximately two dozen types of federal land, nationally significant for their scenic, natural, scientific, historical, or archaeological interest (see **CLASSIFICATION**). The NPS was established as a bureau of the DOI by an Act of Congress on August 25, 1916. The NPS does not administer National Forests (United States Department of Agriculture/Forest Service), Wildlife Refuges (United States Department of the Interior/Fish and Wildlife Service), or a variety of other public lands available for visitor use.

NEGLIGIBLE TRANSIT: A brief, incidental entry into a park by passing traffic (vehicular or pedestrian) using NPS-administered grounds, roads, or walkways (see **NON-REPORTABLE VISIT**).

NON-RECREATION OVERNIGHT STAY: A reportable non-recreation overnight stay is any overnight associated with non-recreation visits and includes leaseholders, line shack overnights for

ranchers on park administered territory, government personnel other than NPS employees, nights on board commercial fishing vessels in NPS administered waters, researchers on non-NPS government business who stay overnight, and other related overnight stays.

NON-RECREATION VISIT: A reportable non-recreation visit includes:

- Persons going to and from inholdings across significant parts of park land;
- Commuter and other through traffic using Service-administered roads or waterways through a park for their convenience;
- Trades-people with business in the park;
- Any civilian activity a part of or incidental to the pursuit of a gainful occupation (e.g. guides);
- Citizens using NPS buildings for civic or local government business, or attending public hearings;
- Outside research activities (visits and overnights) if independent of NPS legislated interests (e.g. meteorological research).

NON-REPORTABLE VISIT – The entry into a park by NPS employees, their families, concession employees, members of cooperating associations, NPS contractors and service personnel are not reportable for visitor use. Specific situations include:

- Employees of the NPS who are assigned to the park or are visiting the park in connection with their duty assignment;
- NPS contractor, concession, and cooperating association employees;
- Temporary or permanent members in households of personnel otherwise included in this definition whose residence is in the park;
- Private tenants within NPS boundaries (inholders) if not crossing significant NPS territory for access;
- Persons engaged in pursuit of specific legal rights of use (e.g. subsistence hunting and fishing);
- Any other persons whose presence in the park is to help the Service fulfill its mission (e.g., volunteers in parks, research activities associated with the NPS mission).

In addition, brief, incidental entries into a park by passing traffic (vehicular or pedestrian) using NPS administered grounds, roads, or walkways is considered non-reportable. Civil ceremonies (e.g., ritualistic observances, marriages) are non-reportable unless there is a traditional, legislative or other official and externally imposed requirement bearing on the park, or unless there is a compensatory contract with the activity sponsor as with an authorized special use permit.

NOT REPORTING: These areas do not report visitation to the NPS.

OUTLYING AREA PARK: See **POPULATION CENTERS**.

OVERNIGHT STAY: One night within a park by a visitor. Overnights by concession employees, inholders, NPS employees and their families are non-reportable. A party of two visitors staying over for three nights yields six overnight stays. There are seven categories of overnight stays:

- Persons staying overnight in concessioner operated lodges, cabins, motels and hotels are reported as Concessioner Lodging Overnight Stays.
- Persons staying overnight in concessioner operated tent campgrounds, RV parks and trailer courts (trailers not provided by concessioner) are reported as Concessioner Campground Overnight Stays.
- Campers in soft-sided tents, sleeping bags or tents attached to a vehicle in NPS operated campsites are reported as NPS Campground Tent Overnight Stays.
- Campers in recreational vehicles including tent trailers at NPS operated campsites are reported as NPS Campground RV Overnight Stays (see definition of Recreational Vehicle).
- Campers in sleeping bags or soft-sided tents erected at undeveloped walk-in campsites not accessible by road are reported as Backcountry Overnight Stays. This does not include camping areas having walk-in sites with nearby parking, nor does it include developed campgrounds solely because they happen to be located on an island.
- Campers in group camping areas, on board transport or boats, at trailside shelters, in undeveloped overflow areas, or in other areas not otherwise described here are reported as Miscellaneous Overnight Stays.
- Non-Recreation Overnight Stays are any overnight associated with non-recreation visits (e.g. nights on board commercial fishing vessels within NPS administered waters or researchers on non-NPS government business who stay overnight). All non-recreation overnight stays should be captured in this category regardless of whether they occurred in concessioner lodging, campgrounds, backcountry, etc. Overnight stays on private inholdings are non-reportable.

POPULATION CENTERS: NPS areas are categorized by their proximity to population centers in the following manner:

- Mixed Area Park – a park located in a mixture of Outlying Area, Rural Area, Suburban Area and/or Urban Area.
- Outlying Area Park – More than 75% of the park is located within a 2010 Metropolitan Statistical Area (MSA) with a population of less than one million people but outside of any Urbanized Areas (Urbanized Areas as defined by the U.S. Census Bureau).
- Remote Area Park – A park located outside of any 2010 MSA and requiring special travel arrangements to reach.
- Rural Area Park – More than 75% of the park is located outside of any 2010 MSA and accessible by paved highway, scheduled air or marine transportation service.

- Suburban Area Park – More than 75% of the park is located within a 2010 MSA with a population greater than one million people but outside of any Urbanized Area (Urbanized Area as defined by the U.S. Census Bureau).
- Urban Area Park – More than 75% of the park is located within a 2010 Urbanized Area as defined by the U.S. Census Bureau.

RECREATION VEHICLE: Any enclosed vehicle used for camping which is more elaborate than a simple truck or car, such as a pickup truck with camper body, pop-up tent trailer, travel trailer, bus, motor coach, mobile home, etc.

RECREATION VISIT: The entry of a person onto lands or waters administered by the NPS except as defined above for non-reportable and non-recreation visits. Funeral parties at National Cemeteries, school groups, etc. are reportable as ‘recreation’ use since their use meets the purpose for which the park was established. Visits originating on surface vehicles (trains, boats, other) and aircraft may be counted if they stop and disembark passengers on NPS administered territory. **The applicable rule is that one entrance per individual per day is countable.**

REMOTE AREA PARK: See **POPULATION CENTERS**.

RURAL AREA PARK: See **POPULATION CENTERS**.

SERVICE PERSONNEL: Employees of the NPS who are assigned to the park or are visiting the park in connection with their duty assignments, NPS contractors, concession employees, cooperating association employees, and the temporary or permanent members in the households of NPS employees who reside in the park.

SUBURBAN AREA PARK: See **POPULATION CENTERS**.

URBAN AREA PARK: See **POPULATION CENTERS**.

VISIT: The entry of any person onto lands or waters administered by the NPS. There are three categories of visits to parks: (1) visits that are *not* reported as visitor use; (2) non-recreation visits that are reported as visitor use; and (3) recreation visits that are reported as visitor use. Negligible transit is non-reportable. Same-day re-entries and entries to detached portions of the same park on the same day are considered to be a single visit. Visits are reported separately for two contiguous, independently authorized parks.

VISITOR DAY: Twelve visitor hours in a park.

VISITOR HOUR: The presence of one or more persons, excluding service personnel, in a park for continuous, intermittent, or simultaneous periods of time aggregating one hour (e.g. one person for one hour, two persons for one-half hour each, etc.). Although same day attendance at detached portions of the same park are considered duplicate counts and are not reported as separate visits, the time spent by a visitor at detached units is added together for the visitor hour estimate.

Abbreviations

EHP::	Ecological & Historic Preserve
HS::	Historic Shrine, Historic Site
HIS::	International Historic Site
INTL::	International
LBJ::	Lyndon Baines Johnson
MEM:	Memorial
MISC:	Miscellaneous
Nat'l:	National
NB:	National Battlefield
NBP:	National Battlefield Park
NBS:	National Battlefield Site
NHP:	National Historical Park
NHS:	National Historic Site
NL:	National Lakeshore
NM:	National Monument
NMEM:	National Memorial
NMP:	National Military Park
NON-REC:	Non-Recreation
NP:	National Park
NPRES	National Preserve
NPS:	National Park Service
NR:	National River
NRA:	National Recreation Area
NRES:	National Reserve
NRR:	National Recreational River
NS:	National Seashore
NSR:	National Scenic River
NST:	National Scenic Trail
PKWY:	Parkway
PRES:	Preserve
RA:	Recreation Area
R.E.:	Robert E.
REC:	Recreation
RVs:	Recreational Vehicles
S&RR:	Scenic & Recreational River
W&SR:	Wild & Scenic River
W.J.:	William Jefferson

Table A.1. Parks setting an annual recreation visit record in 2019

Park	Park Unit ID	2019 Recreation Visits	Previous Record Year	Previous Record Visits
Big Bend NP	BIBE	463,832	2017	440,276
Big Thicket NPRES ³	BITH	255,926	2018	221,514
Biscayne NP ³	BISC	708,522	2008	686,062
Black Canyon of the Gunnison NP	BLCA	432,818	1976	373,600
Canaveral NS	CANA	1,884,122	2015	1,689,754
Capulin Volcano NM	CAVO	81,617	1968	75,500
Carter G. Woodson Home NHS	CAWO	2,381	2018	1,954
Death Valley NP ⁴	DEVA	1,740,945	2018	1,678,660
Flight 93 NMEM ³	FLNI	411,226	2016	385,123
Glacier Bay NP & PRES	GLBA	672,087	2018	597,915
Great Sand Dune NP & PRES	GRSA	527,546	2017	486,935
Great Smoky Mountains NP	GRSM	12,547,743	2018	11,421,200
Joshua Tree NP ³	JOTR	2,988,547	2018	2,942,382
Kaloko Honokohau NHP	KAHO	232,921	2018	218,015
Katmai NP & PRES	KATM	84,167	2007	82,634
Kenai Fjords NP	KEFJ	356,601	2011	346,852
Kennesaw Mountain NBP	KEMO	2,621,050	2017	2,593,725
Keweenaw NHP	KEWE	20,535	2018	20,416
Klondike Gold Rush NHP Alaska ²	KLGO	1,116,161	2014	1,085,202
Little River Canyon NPRES ³	LIRI	649,986	2016	462,700
Minidoka NHS	MIIN	13,647	2017	11,622
Mojave NPRES	MOJA	841,516	2018	787,404
Monocacy NB ³	MONO	144,969	2017	113,820
Palo Alto Battlefield NHP	PAAL	149,733	2017	84,361
Petroglyph NM	PETR	293,957	2018	268,613
Pictured Rocks NL ³	PIRO	858,715	2018	815,308
Piscataway Park	PISC	329,729	2008	324,394
Rocky Mountain NP	ROMO	4,670,053	2018	4,590,493
Ross Lake NRA	ROLA	1,088,528	2016	905,418
Saguaro NP	SAGU	1,020,226	2017	964,760
Stonewall NM	STON	2,088,929	2018	511,220
Tallgrass Prairie NPRES	TAPR	33,750	2017	30,773
Waco Mammoth NM	WACO	111,331	2018	106,932

The Department of the Interior protects and manages the nation's natural resources and cultural heritage; provides scientific and other information about those resources; and honors its special responsibilities to American Indians, Alaska Natives, and affiliated Island Communities.

NPS 999/167807, April 2020

National Park Service
U.S. Department of the Interior



[Natural Resource Stewardship and Science](#)

1201 Oakridge Drive, Suite 150
Fort Collins, CO 80525